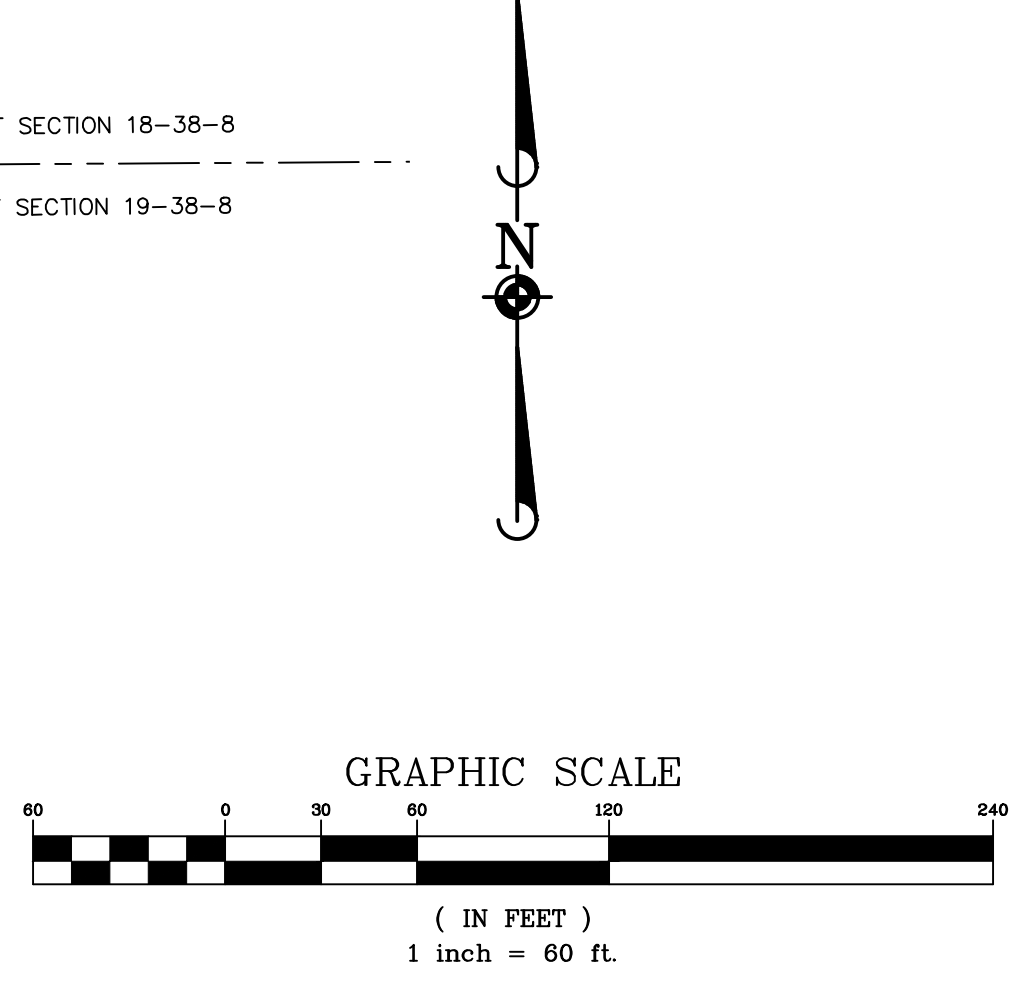
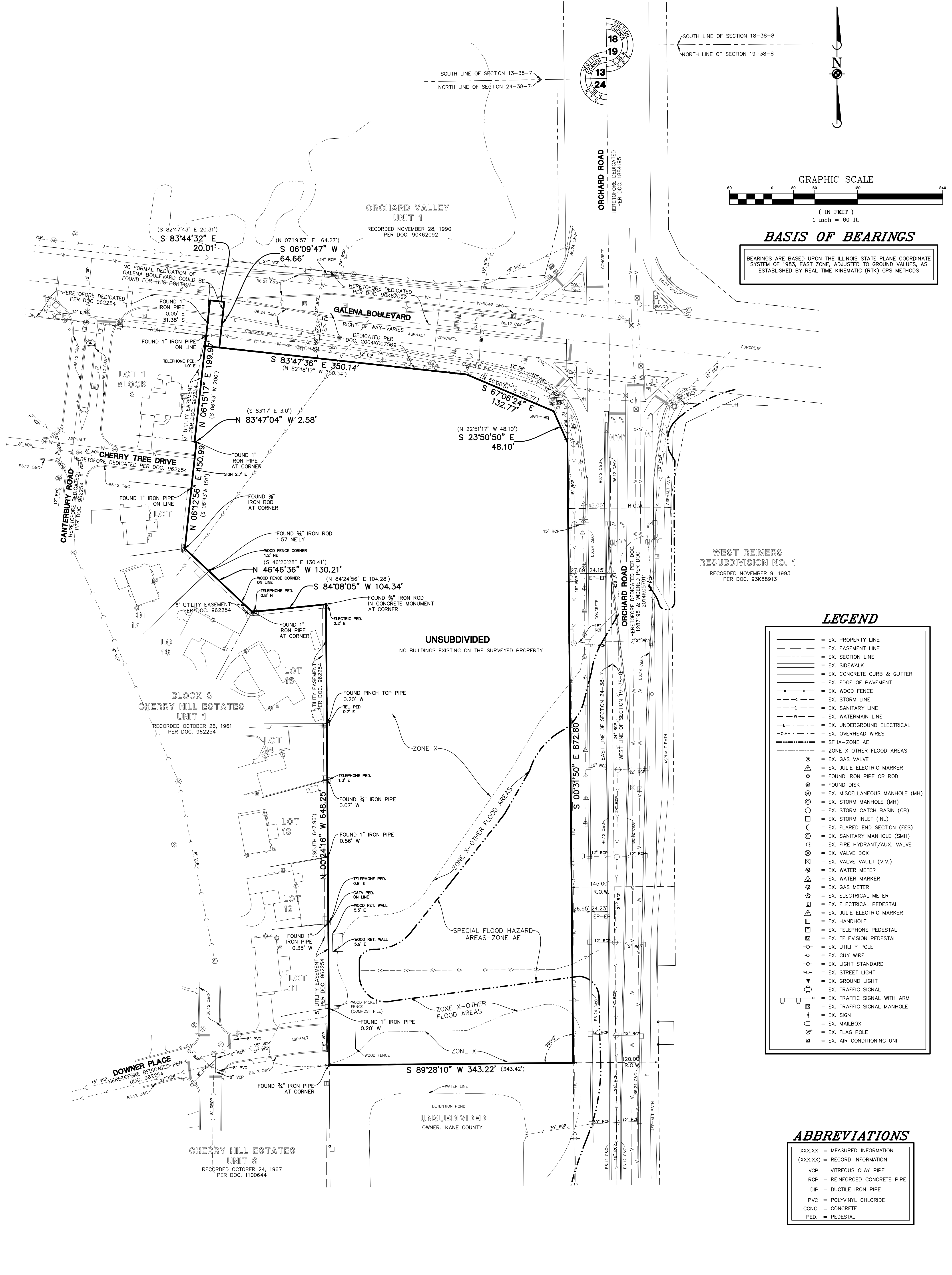


SURVEY PREPARED FOR

EBY REALTY GROUP
13795 S. MURREN ROAD
OLATHE, KANSAS 66062

ALTA/ACSM LAND TITLE SURVEY



BASIS OF BEARINGS
BEARINGS ARE BASED UPON THE ILLINOIS STATE PLANE COORDINATE SYSTEM OF 1983, EAST ZONE, ADJUSTED TO GROUND VALUES, AS ESTABLISHED BY REAL TIME KINEMATIC (RTK) GPS METHODS

WEST REIMERS
RESUBDIVISION NO. 1
RECORDED NOVEMBER 9, 1993
PER DOC. 93K88913

LEGEND

	= EX. PROPERTY LINE
	= EX. EASEMENT LINE
	= EX. SECTION LINE
	= EX. SIDEWALK
	= EX. CONCRETE CURB & GUTTER
	= EX. EDGE OF PAVEMENT
	= EX. WOOD FENCE
	= EX. STORM LINE
	= EX. SANITARY LINE
	= EX. WATERMAIN LINE
	= EX. UNDERGROUND ELECTRICAL
	= EX. OVERHEAD WIRES
	= SFHA-ZONE AE
	= ZONE X OTHER FLOOD AREAS
	= EX. GAS VALVE
	= EX. JULIE ELECTRIC MARKER
	= FOUND IRON PIPE OR ROD
	= FOUND DISK
	= EX. MISCELLANEOUS MANHOLE (MH)
	= EX. STORM MANHOLE (MH)
	= EX. STORM CATCH BASIN (CB)
	= EX. STORM INLET (INL)
	= EX. FLARED END SECTION (FES)
	= EX. SANITARY MANHOLE (SMH)
	= EX. FIRE HYDRANT/AUX. VALVE
	= EX. VALVE BOX
	= EX. VALVE VAULT (V.V.)
	= EX. WATER METER
	= EX. WATER MARKER
	= EX. GAS METER
	= EX. ELECTRICAL METER
	= EX. ELECTRICAL PEDESTAL
	= EX. JULIE ELECTRIC MARKER
	= EX. HANDHOLE
	= EX. TELEPHONE PEDESTAL
	= EX. TELEVISION PEDESTAL
	= EX. UTILITY POLE
	= EX. GUY WIRE
	= EX. LIGHT STANDARD
	= EX. STREET LIGHT
	= EX. GROUND LIGHT
	= EX. TRAFFIC SIGNAL
	= EX. TRAFFIC SIGNAL WITH ARM
	= EX. TRAFFIC SIGNAL MANHOLE
	= EX. SIGN
	= EX. MAILBOX
	= EX. FLAG POLE
	= EX. AIR CONDITIONING UNIT

ABBREVIATIONS

XXX.XX	= MEASURED INFORMATION
(XXX.XX)	= RECORD INFORMATION
VCP	= VITREOUS CLAY PIPE
RCP	= REINFORCED CONCRETE PIPE
DIP	= DUCTILE IRON PIPE
PVC	= POLYVINYL CHLORIDE
CONC.	= CONCRETE
PED.	= PEDESTAL

SHEET 2 OF 2 CBC.AUL.01	PROJ. MGR.: S.P.	SOUTHWEST CORNER OF GAENA BOULEVARD AND ORCHARD ROAD CITY OF AURORA, ILLINOIS ALTA/ACSM LAND TITLE SURVEY
	PROJ. ASSOC.: CNB	
	DRAWN BY: CNB	
	DATE: 04-15-15	
SCALE: 1"=60'		

Manhard CONSULTING LTD
700 Springer Drive, Lombard, IL 60148 ph: 630.881.8800 f: 630.881.8885 manhard.com
Civil Engineers • Surveyors • Water Resource Engineers • Water & Wastewater Engineers
Construction Managers • Environmental Scientists • Landscape Architects • Planners

DATE	REVISIONS	DRAWN BY
05-18-15	REVISED PER ATTORNEY REVIEW	CNB