

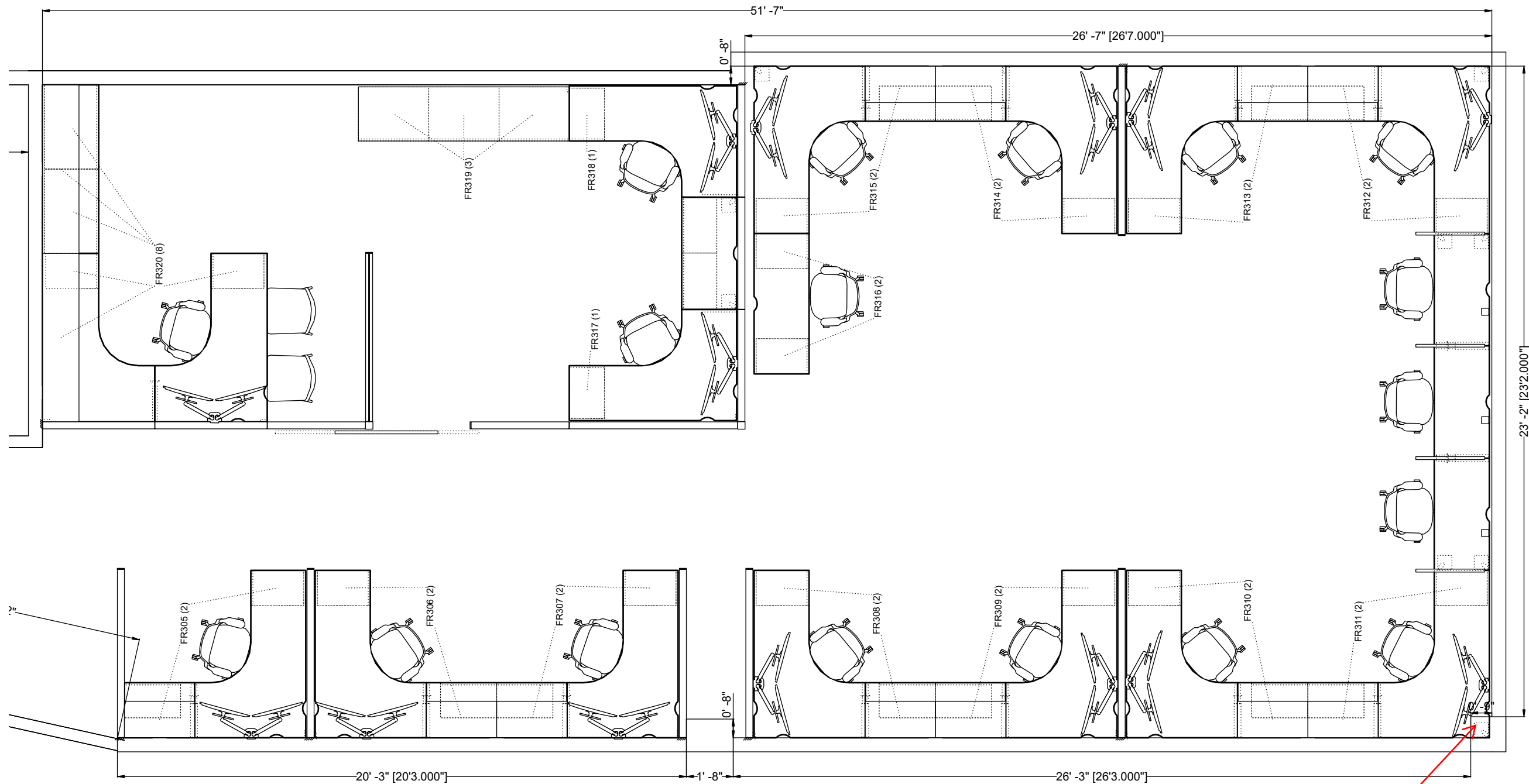
Scale 3/16" = 1'



DRAWN BY: MKELETT				REV:	DATE:	DESCRIPTION:
CONTACT:				1.	5.2.23	ISSUE FOR REVIEW
DATE:				2.	5.3.23	ISSUE FOR REVIEW
SCALE: 1/4"=1'-0"				3.	5.10.23	ISSUE FOR REVIEW
QUOTE NO. [Order entry, Dealer				4.	5.26.23	ISSUE FOR REVIEW
APPROVED BY:				5.		
				6.		
				7.		
				8.		

AURORA POLICE DEPARTMENT
CRISIS INTERVENTION CENTER
[Sold-To, Address, City]





Scale 1/4" = 1'

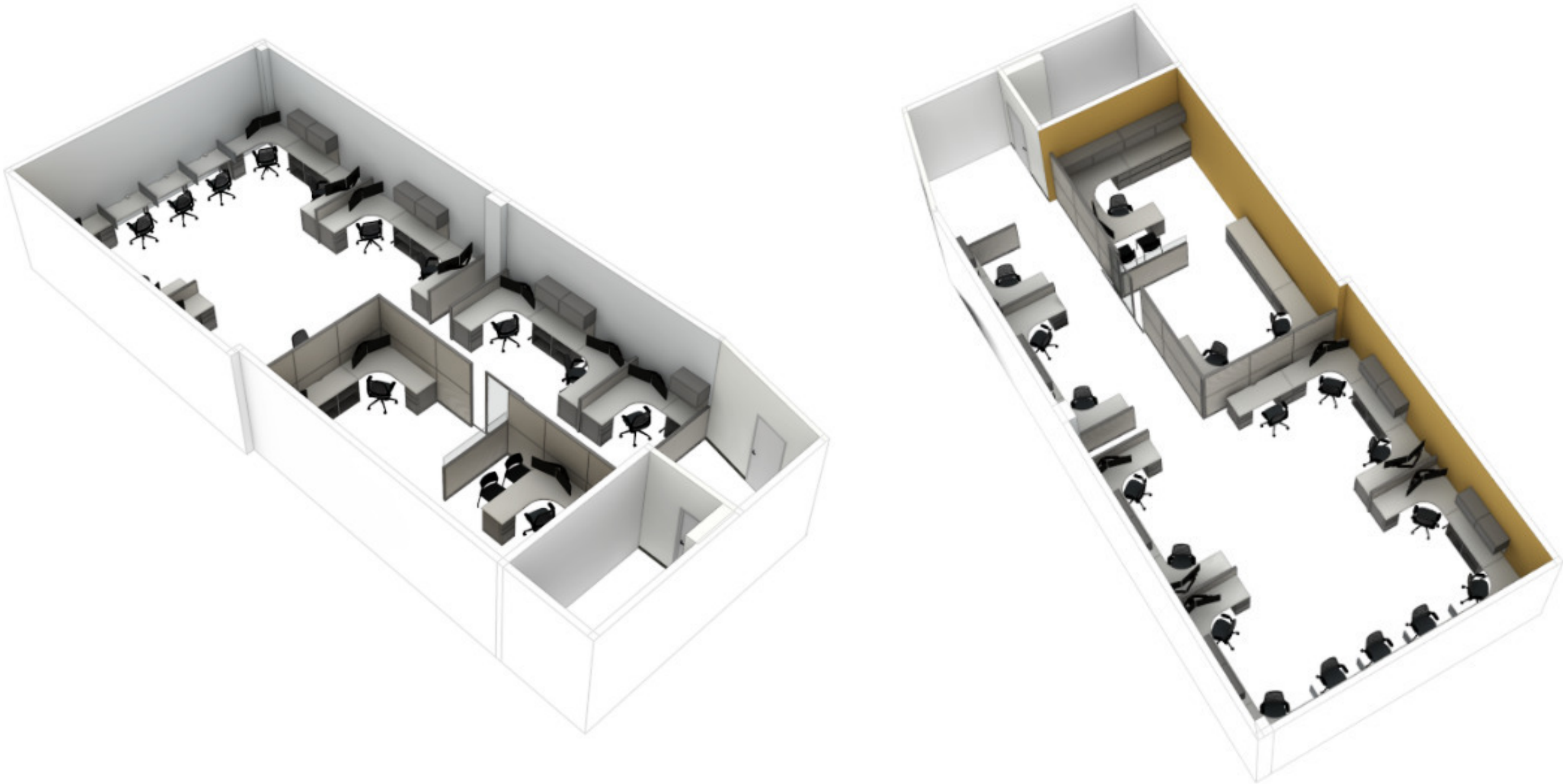
OVERALL PLAN

REV.	DATE	DESCRIPTION
1	5/2/23	ISSUE FOR REVIEW
2	5/3/23	ISSUE FOR REVIEW
3	5/10/23	ISSUE FOR REVIEW
4	5/26/23	ISSUE FOR REVIEW
5		
6		
7		
8		

DRAWN BY: MKELLETT
CONTACT: 1/4" = 1'-0"
DATE: 5/2/23
QUOTE NO.: [Order entry Dealer]
APPROVED BY:

AURORA POLICE DEPARTMENT
CRISIS INTERVENTION CENTER
[Solid-To, Address, City]





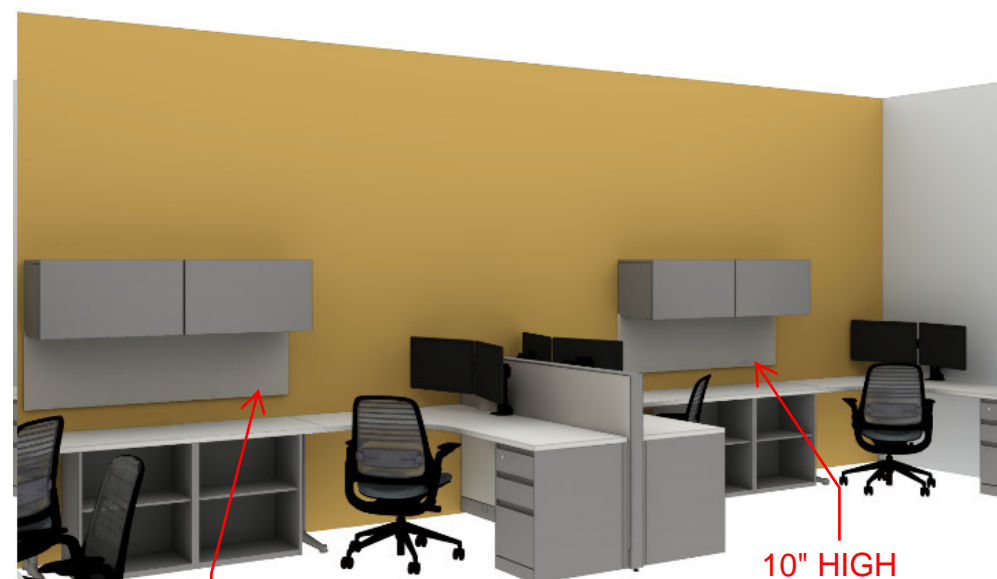
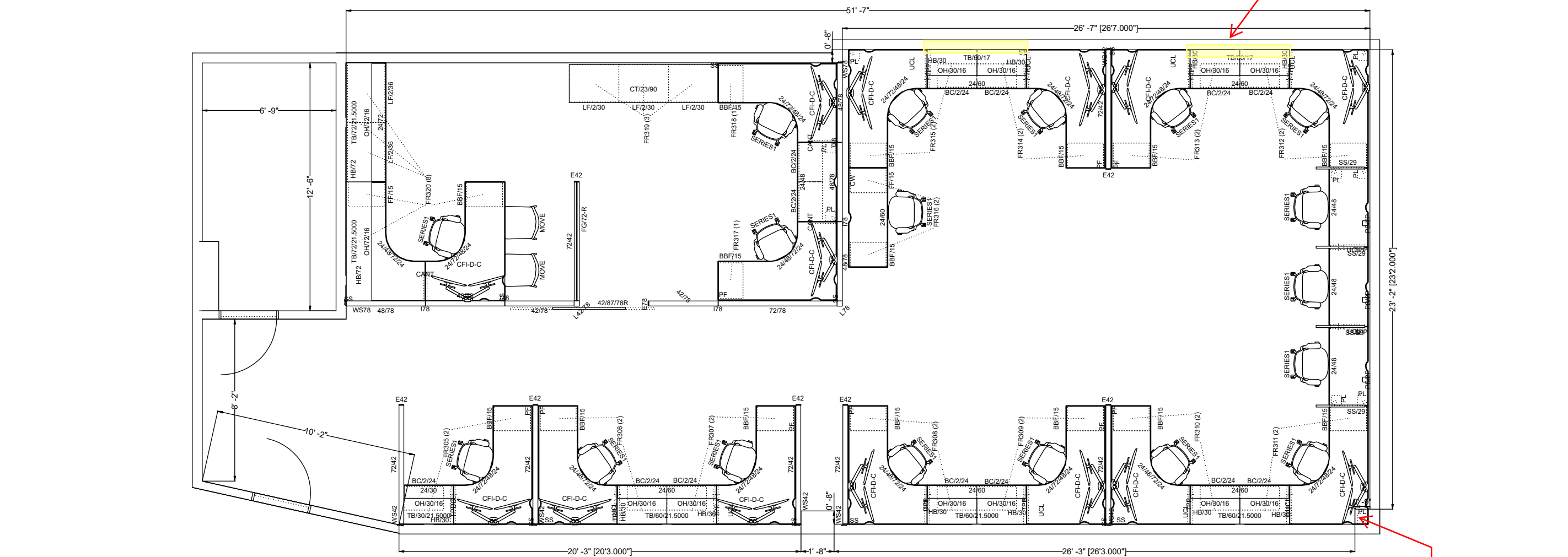
OVERALL PLAN

REV.	DATE	DESCRIPTION
1	5/2/23	ISSUE FOR REVIEW
2	5/2/23	ISSUE FOR REVIEW
3	5/10/23	ISSUE FOR REVIEW
4	5/26/23	ISSUE FOR REVIEW
5		
6		
7		
8		

DRAWN BY: M. KELLET	
CONTACT:	
DATE:	1/4" = 1'-0"
SCALE:	Order entry: Dealer
QUOTE NO:	
APPROVED BY:	

AURORA POLICE DEPARTMENT
CRISIS INTERVENTION CENTER
[Sold-To, Address, City]



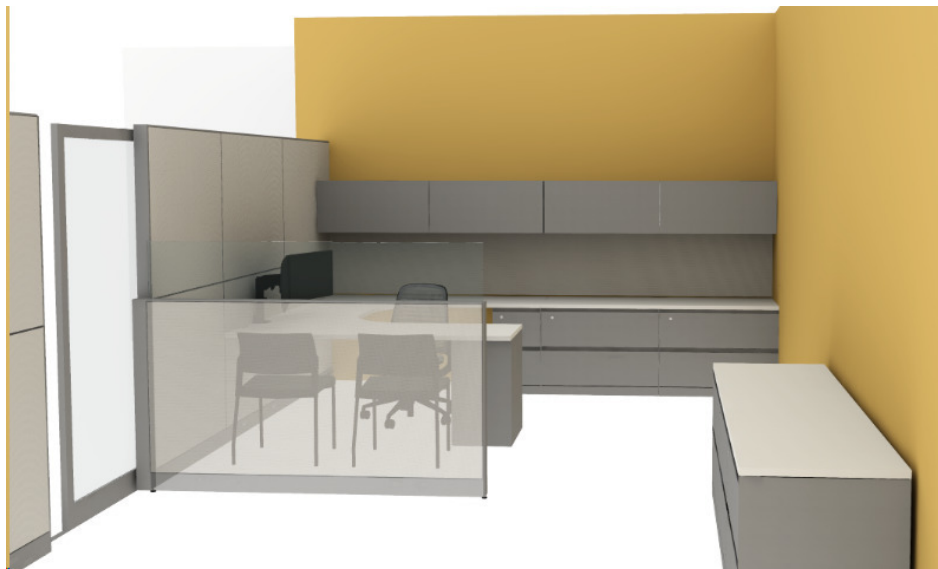
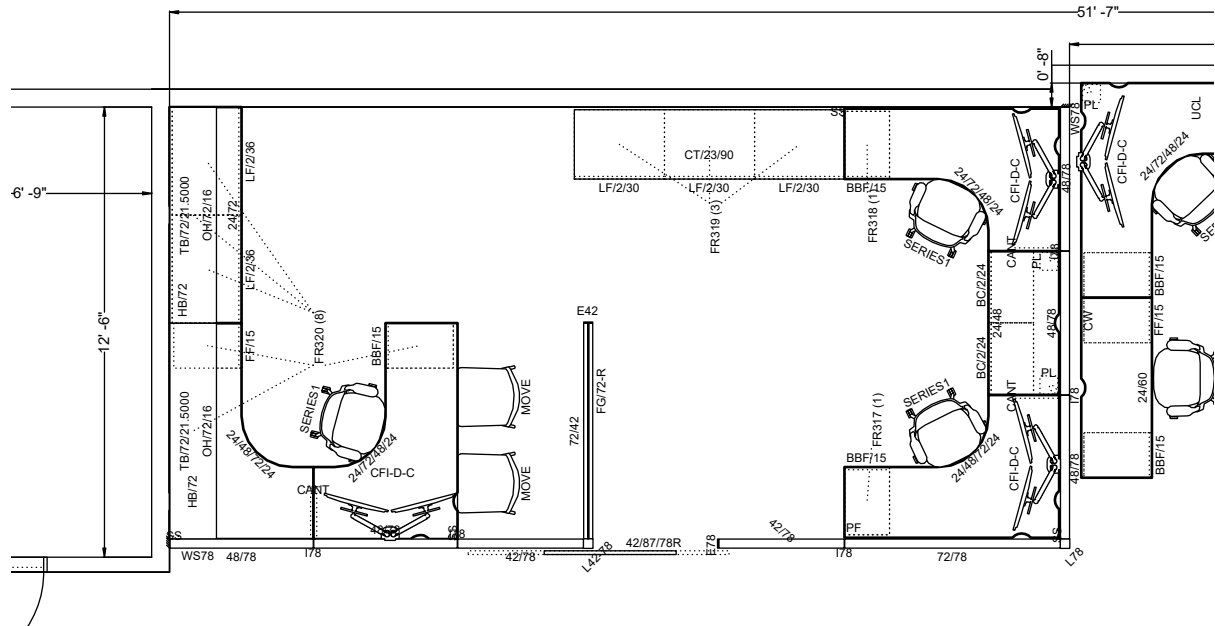


FURNITURE PLAN

REV.	DATE	DESCRIPTION
1	5/2/23	ISSUE FOR REVIEW
2	5/2/23	ISSUE FOR REVIEW
3	5/10/23	ISSUE FOR REVIEW
4	5/26/23	ISSUE FOR REVIEW
5		
6		
7		
8		

AURORA POLICE DEPARTMENT
CRISIS INTERVENTION CENTER
[Solid-To, Address, City]





CLOSED WORKSTATIONS

AURORA POLICE DEPARTMENT
CRISIS INTERVENTION CENTER

[Sold-To, Address, City]



BRINGING LIFE TO WORK
www.interiorsforbusiness.com office: 630.761.1070 409 North River Street Batavia, IL 60510

The following drawing/design is the sole intellectual property of Interiors for Business, Inc. and may not be duplicated or copied for any reason. Any drawing or design duplicated or copied will be billed at the current per hour rate.

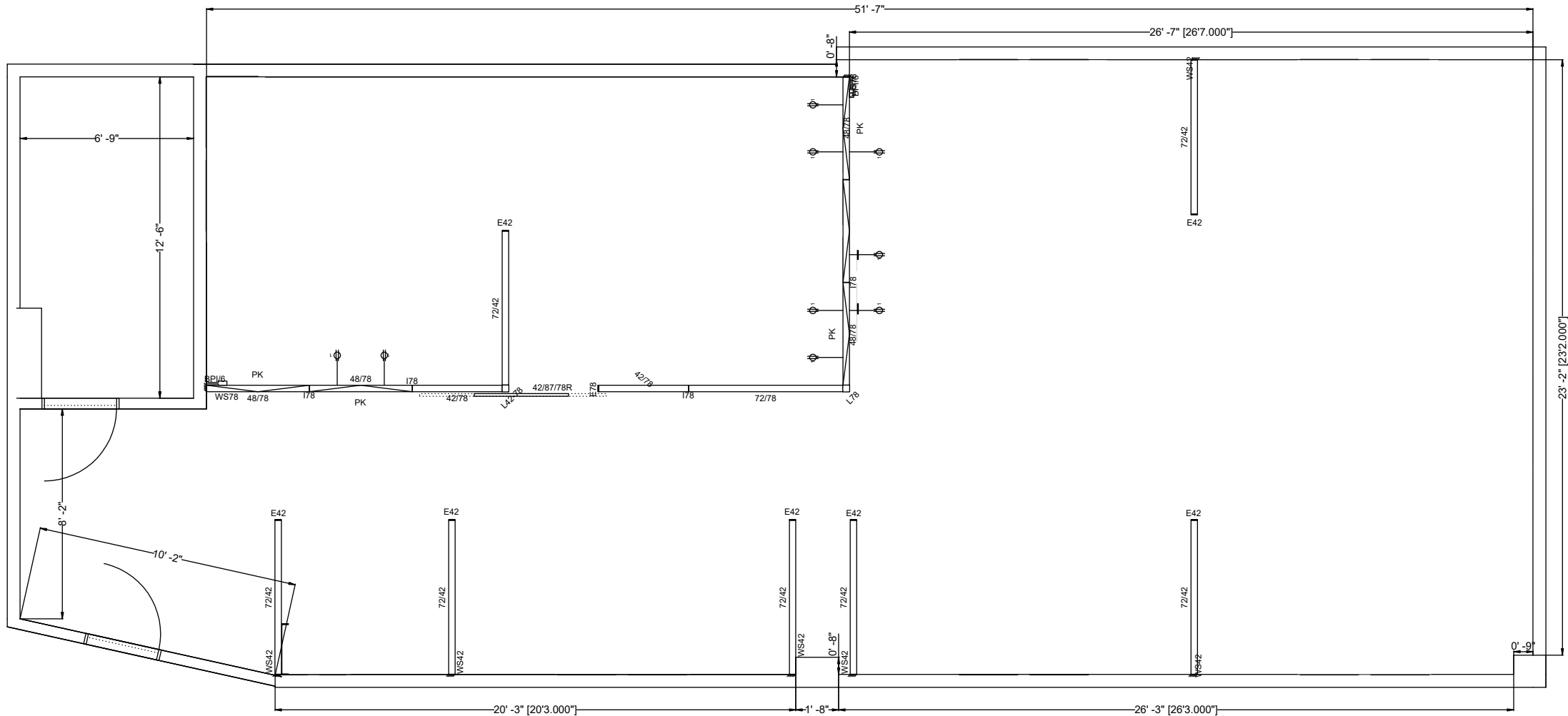
DRAWN BY: MCELLETT	REV.	DATE:	DESCRIPTION:
CONTACT:	1	5/2/23	ISSUE FOR REVIEW
DATE:	2	5/2/23	ISSUE FOR REVIEW
SCALE: 1/4"=1'-0"	3	5/10/23	ISSUE FOR REVIEW
QUOTE NO: [Order entry Dealer	4	5/26/23	ISSUE FOR REVIEW
APPROVED BY:	5		
	6		
	7		
	8		

AURORA POLICE DEPARTMENT
CRISIS INTERVENTION CENTER

[Sold-To, Address, City]



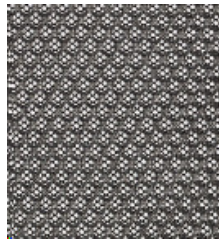
Scale 3/16" = 1'



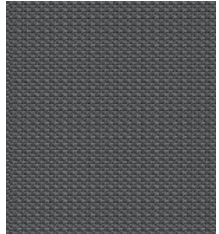
ELECTRICAL



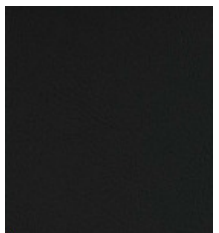
Soft Casters



Graphite



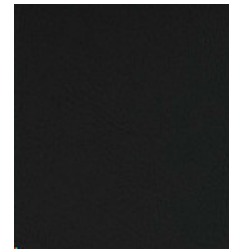
Graphite



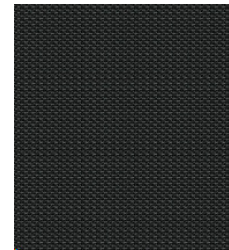
Black



Soft Glides

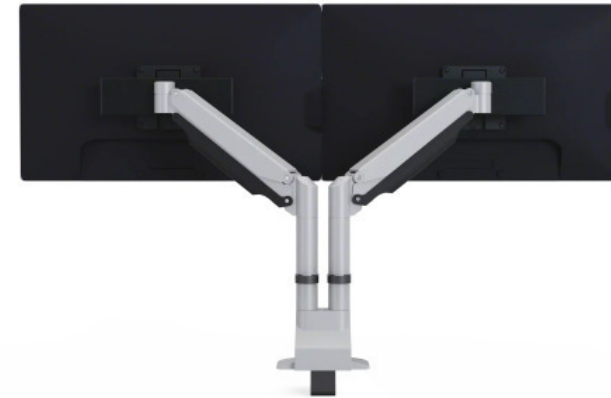


Black



Licorice

Dual Monitor Arm



Black



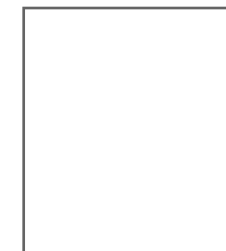
FINISHES



Nickel



Asti



Milk

REV.	DATE	DESCRIPTION
1	5/2/23	ISSUE FOR REVIEW
2	5/2/23	ISSUE FOR REVIEW
3	5/10/23	ISSUE FOR REVIEW
4	5/26/23	ISSUE FOR REVIEW
5		
6		
7		
8		

DRAWN BY: M. KELLET
CONTACT: 1/4" = 1'-0"
SCALE: 1/4" = 1'-0"
QUOTE NO: (Order entry Dealer)
APPROVED BY:

AURORA POLICE DEPARTMENT
CRISIS INTERVENTION CENTER
[Sold-To, Address, City]



REV.	DATE	DESCRIPTION
1	5/2/23	ISSUE FOR REVIEW
2	5/2/23	ISSUE FOR REVIEW
3	5/10/23	ISSUE FOR REVIEW
4	5/26/23	ISSUE FOR REVIEW
5		
6		
7		
8		

DRAWN BY: MCELLETT

CONTACT:

DATE:

SCALE: 1/4" = 1'-0"

QUOTE NO:

APPROVED BY:

Order entry Dealer

AURORA POLICE DEPARTMENT

CRISIS INTERVENTION CENTER

[Sold-To, Address, City]



FINISHES