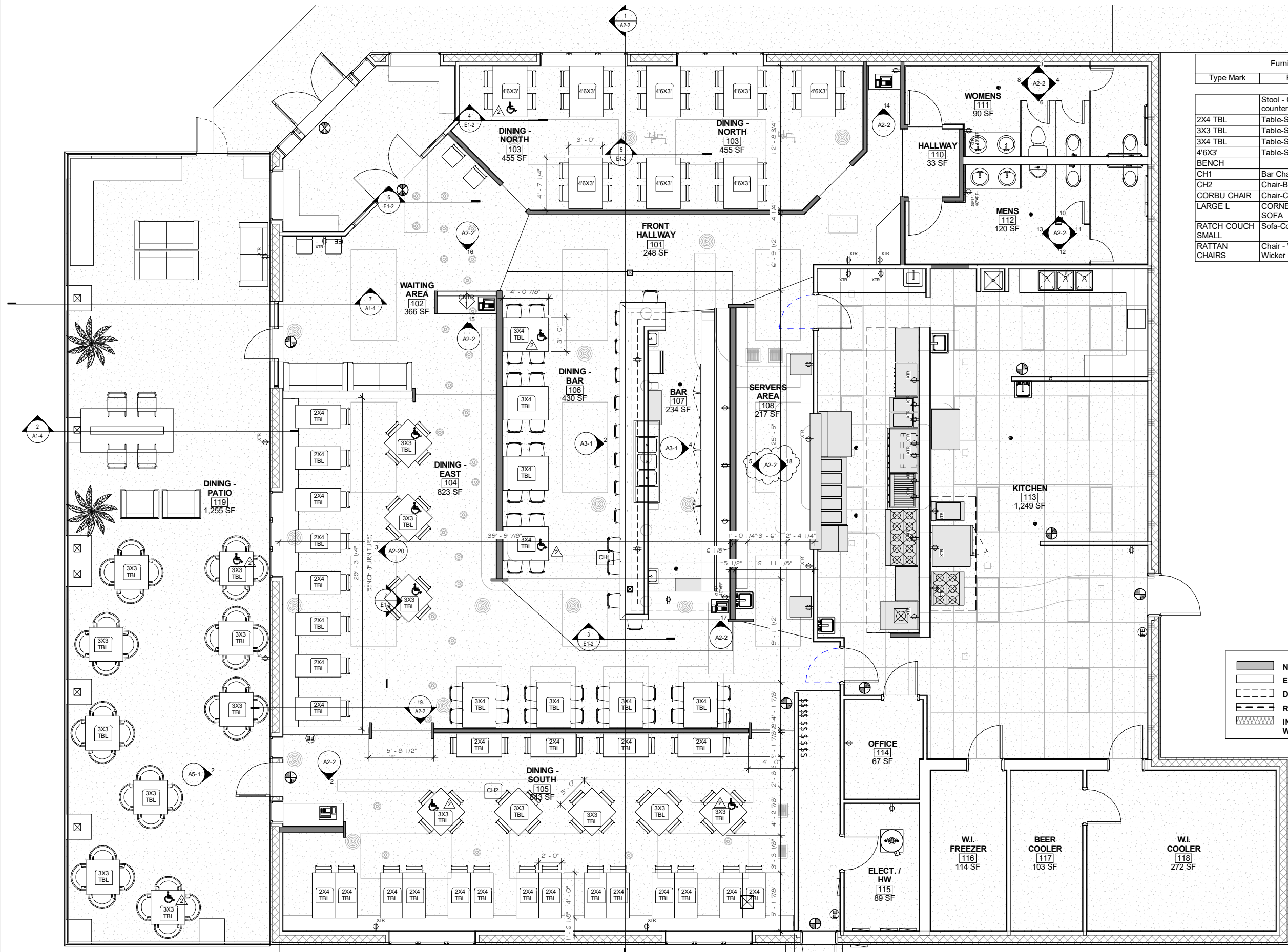


Z:\2018\2018 Projects\2018-19_IDR El Jefe 1271 N. Lake St. Aurora\B-DWG\SA-REVIT DRAWINGS\DR 1271 N Lake St. - ICL.rvt



Furniture Schedule		
Type Mark	Family and Type	Count
	Stool - Cantilevered: 36" counter stool	4
2X4 TBL	Table-Square: 4' x 2'	26
3X3 TBL	Table-Square: 3' x 3'	17
3X4 TBL	Table-Square: 4' x 3'	8
4'6X3'	Table-Square: 4' 6" x 3'	8
BENCH		4
CH1	Bar Chair: Bar Chair	45
CH2	Chair-Breuer: Chair-Breuer	99
CORBU CHAIR	Chair-Corbu: Chair	2
LARGE L	CORNER SOFA: CORNER SOFA	1
RATCH COUCH SMALL	Sofa-Corbu: Sofa	5
RATTAN CHAIRS	Chair - Wicker Porch: Chair - Wicker Porch	36

NEW WALL
 EXISTING WALL TO REMAIN
 DEMO WALL
 RATED WALL
 INSULATED WALL

1 01 MILLWORK AND FINISHES PLAN
1/4" = 1'-0"



ALLEN PEPA
ARCHITECTS
INFO@ALLENPEPA.COM
TEL: (630) 578-1105
215 FULTON ST., GENEVA, IL 60134

EL JEFE
1271 N. LAKE ST. AURORA, IL 60506
ABRAHAM ARECHIGA, (615) 715-3938

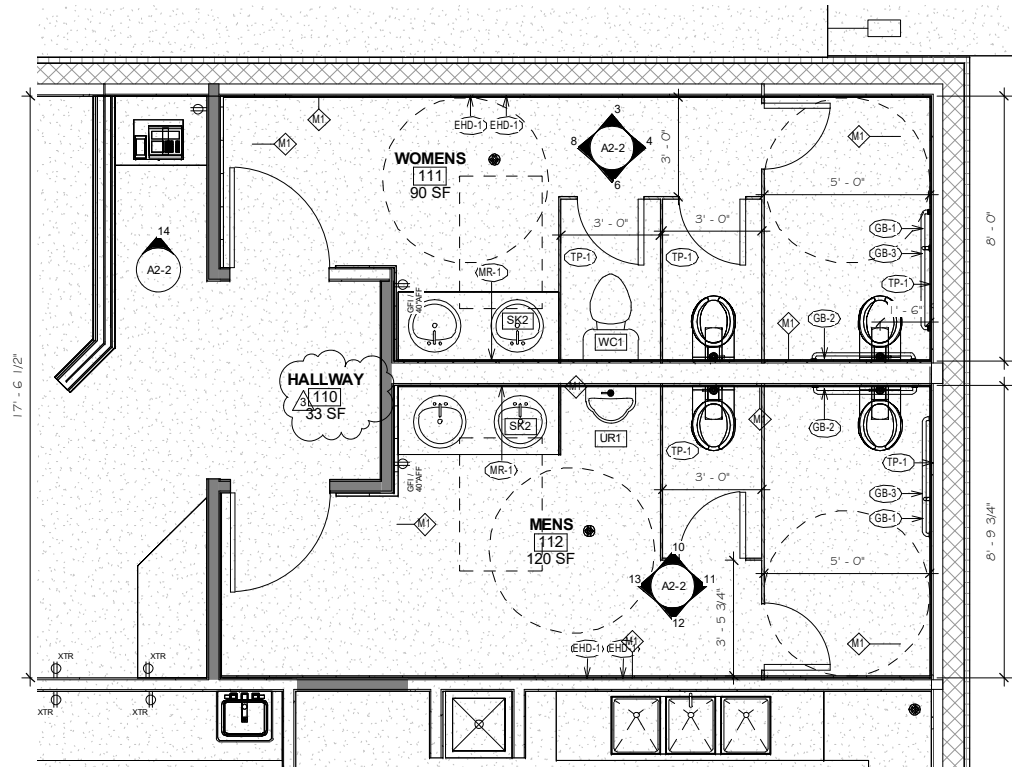
Schematic Design:	7-17-18	
Permit Submittal:	8/9/18	
Health Dept.:		
Permit:		
ISSUE DATE:	8-9-18	
POST BID/PERMIT REVISIONS:		
No.	Date	Description
2	9-14-18	Permit Resp. 2
10	10-12-18	RFIs

PROJECT NO. 2018-19
DRAWN BY -
CHECKED BY -
SHEET 7 OF 26

FIRST FLOOR PLAN - FURNITURE



Permit Response 10/15/18

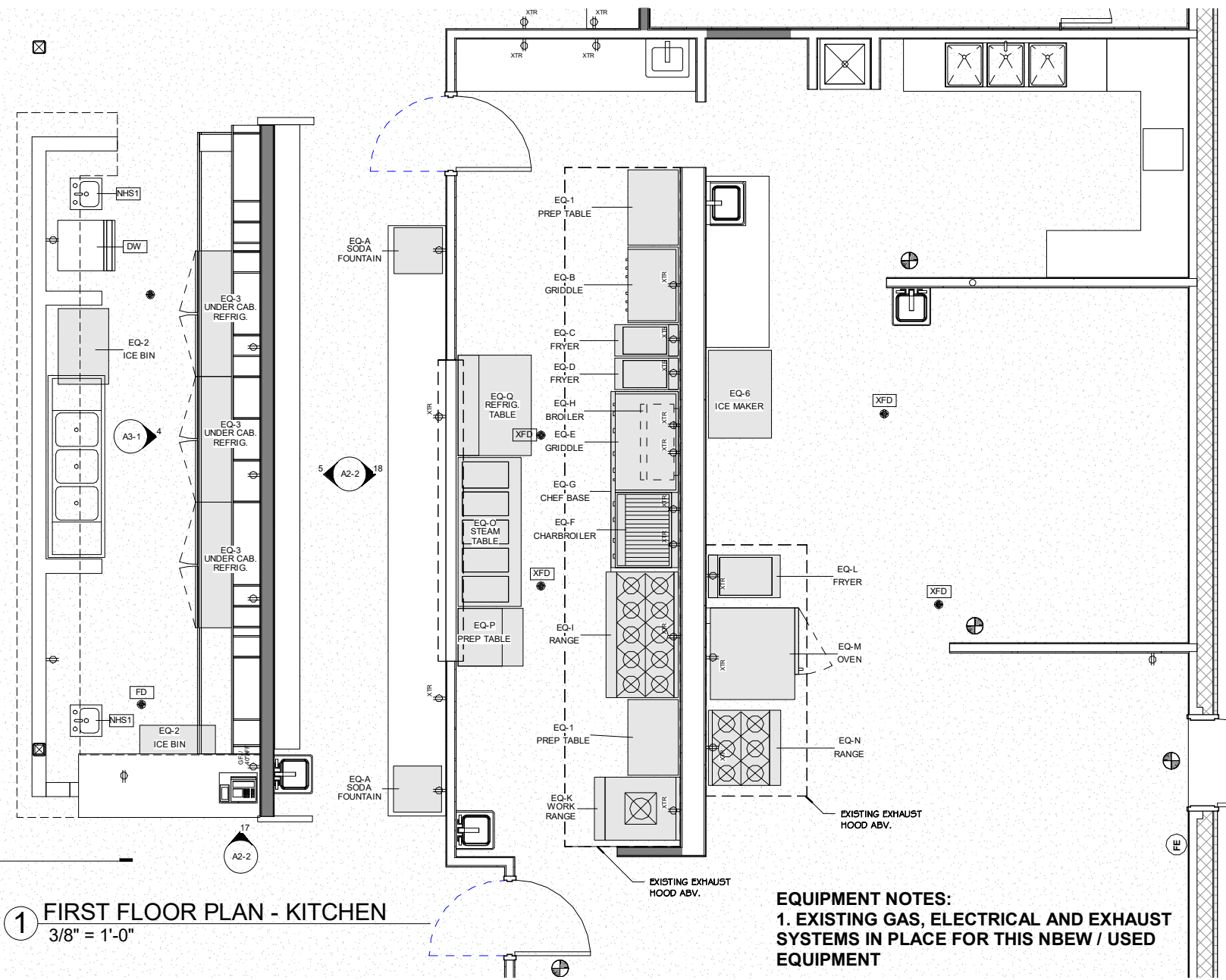


2 BATHROOM FLOOR PLAN - NEW
3/8" = 1'-0"



NOTES:
1. SEE PLUMBING PLANS FOR REPLACED FIXTURES.
2. EXISTING PLUMBING WASTE, VENT AND H/C WATER LINES TO BE REUSED. ADD VALVES PER INDUSTRY STANDARD AND CODE

BATHROOM ACCESSORIES				
NOTE	MANUFACTURER	DESCRIPTION	Count	COMMENT
EHD-1	EXCEL	ELECTRIC HAND AND HAIR DRYER	4	
GB-1	BRADLEY	3'-6" GRAB BAR	2	SEE G1-3 FOR ADA REQUIREMENTS
GB-2	BRADLEY	3'-0" GRAB BAR	2	SEE G1-3 FOR ADA REQUIREMENTS
GB-3	BRADLEY	18" GRAB BAR VERTICAL	2	SEE G1-3 FOR ADA REQUIREMENTS
MR-1	GENERIC	28" X 3' BEVELED EDGE WALL MIRRORS	2	SEE G1-3 FOR ADA REQUIREMENTS, PROVIDED BY OWNER, INSTALLED BY CONTRACTOR
TP-1	PER OWNER	TOILET PAPER DISPENSER	5	SEE G1-3 FOR ADA REQUIREMENTS, PROVIDED BY OWNER, INSTALLED BY CONTRACTOR



1 FIRST FLOOR PLAN - KITCHEN
3/8" = 1'-0"

EQUIPMENT NOTES:
1. EXISTING GAS, ELECTRICAL AND EXHAUST SYSTEMS IN PLACE FOR THIS NBW / USED EQUIPMENT

KITCHEN EQUIPMENT SCHEDULE							
Mark	Description	Manufacturer	Model	Electrical Requirements	Plumbing Requirements	Count	Comments
EQ-1	PREP TABLE					2	
EQ-2	ICE BIN					2	
EQ-3	UNDER CAB. REFRIG.	AVANTCO	SS-UC-60R-HC	115 V		3	
EQ-6	ICE MAKER					1	
EQ-A	SODA FOUNTAIN					2	
EQ-B	GRIDDLE	ANETS	A24X36AGM	ELECTRIC STRIKE	GAS	1	
EQ-C	FRYER	PITCO	40D		GAS	1	
EQ-D	FRYER	PITCO	40D		GAS	1	
EQ-E	GRIDDLE	ANETS	SG30X48	ELECTRIC STRIKE	GAS	1	
EQ-F	CHARBROILER	CPG	CBR36	ELECTRIC STRIKE	GAS	1	
EQ-G	CHEF BASE	EVEREST	ECB82D4	ELECTRIC STRIKE	GAS	1	
EQ-H	BROILER	CPG	CPG-SB-36	ELECTRIC STRIKE	GAS	1	
EQ-I	RANGE	SUNFIRE	X36-G6	ELECTRIC STRIKE	GAS	1	
EQ-K	WORK RANGE	TOWN	Y-1-SS-N-13 YORK	ELECTRIC STRIKE	GAS	1	
EQ-L	FRYER	PITCO	65C+		GAS	1	
EQ-M	OVEN	ALTO-SHAAM	COMBITHERM CTP7-20G	220-240 V	GAS & (2) COLD WATER INLETS	1	
EQ-N	RANGE	SUNFIRE	X36-G6	ELECTRIC STRIKE	GAS	1	
EQ-O	STEAM TABLE	SERVIT	423EST5WE	208 / 240 V		1	
EQ-P	PREP TABLE	AVANTCO	178APT27HC	115 V		1	
EQ-Q	REFRIG. TABLE	CONTINENTAL	SW48-18M-D	220 V		1	

Z:\2018\2018 Projects\2018-19_JDR El Jefe\1271 N. Lake St. Aurora\B-DWG\SA-REVIT DRAWINGS\DR 1271 N. Lake St. - JCL.rvt

ALLEN PEPA
ARCHITECTS
INFO@ALLENPEPA.COM
TEL: (630) 578-1105
215 FULTON ST., GENEVA, IL 60134

EL JEFE
1271 N. LAKE ST. AURORA, IL 60506
ABRAHAM ARECHIGA, (615) 715-3938

Schematic Design: 7-17-18
Permit Submittal: 8/9/18
Health Dept.:
Permit:
ISSUE DATE: 8-9-18
POST BID/PERMIT REVISIONS:
No. Date Description
3 9-28-18 Permit Resp. 3

PROJECT NO. 2018-19
DRAWN BY JCL
CHECKED BY LBA
SHEET 8 OF 26

FLOOR PLAN -
KITCHEN &
BATHROOM



Permit Response 10/15/18