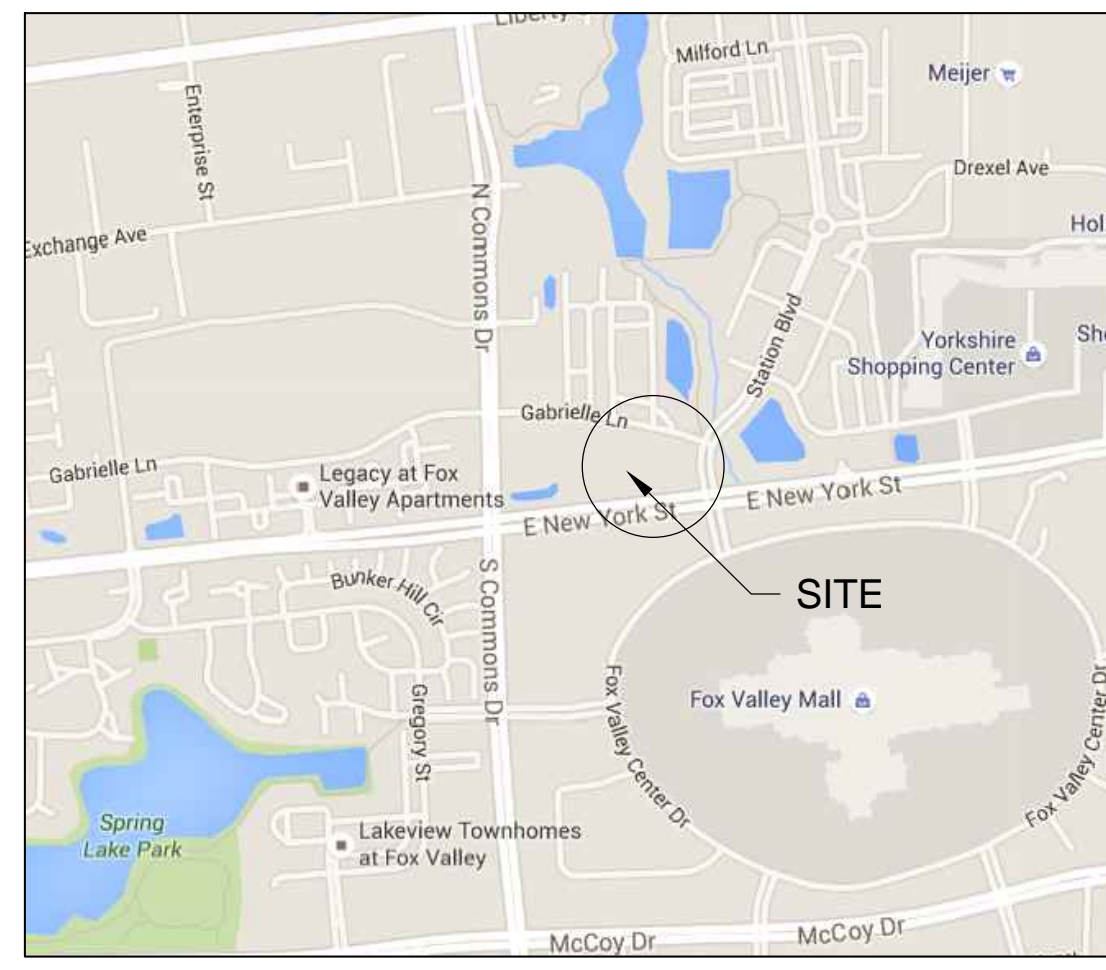
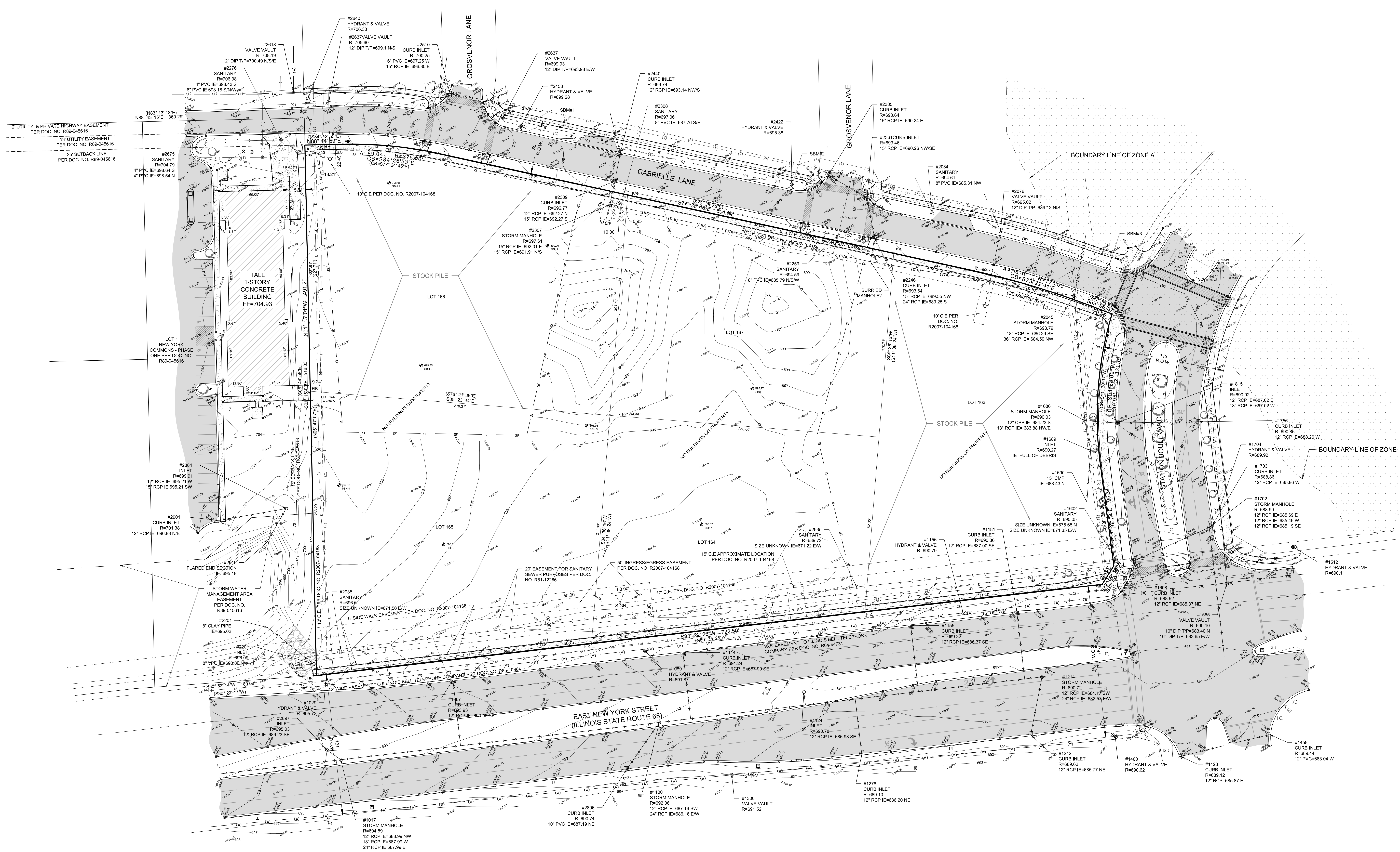
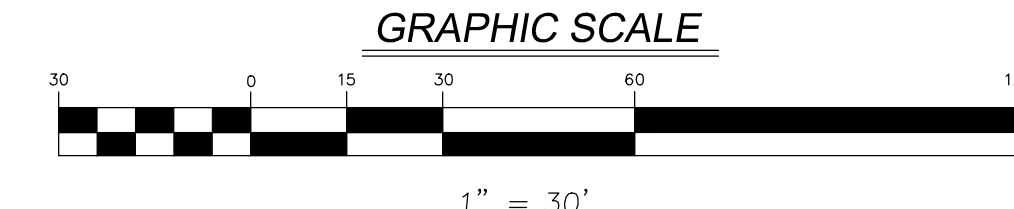


ALTA/ACSM LAND TITLE & TOPOGRAPHIC SURVEY OF INNOVATIVE HEALTH AT THE PLAZA OF NEW YORK AURORA, ILLINOIS

LOTS 163 THROUGH 167, INCLUSIVE IN THE PLAZA ON NEW YORK SUBDIVISION, BEING A SUBDIVISION OF PART OF SECTION 21, TOWNSHIP 38 NORTH, RANGE 9 EAST OF THE THIRD PRINCIPAL MERIDIAN, ACCORDING TO THE PLAT THEREOF RECORDED JUNE 5, 2007 AS DOCUMENT R2007-104168 IN THE CITY OF AURORA, IN DUPAGE COUNTY, ILLINOIS.



VICINITY MAP
NOT TO SCALE



Project No: 16008	Project Name: INNOVATIVE HEALTH - THE PLAZA OF NEW YORK	Group No: VP01.1	Sheet No.: 1 of 2
TOPO - ALTA/ACSM SURVEY	INNOVATIVE HEALTH - THE PLAZA OF NEW YORK	Group No: VP01.1	Sheet No.: 1 of 2
DATE: 02-11-16	DRAWN BY: BJS	PROJECT MANAGER: AS	CHECKED BY: AS
DRAFTING COMPLETED: 02-11-16	SCALE: 1" = 30'	FIELD WORK COMPLETED: 01-29-16	

NO.	DATE	DESCRIPTION	REVISIONS

PREPARED FOR:
INNOVATIVE HEALTH
 1360 BEE PERES ROAD, SUITE 310
 ST. LOUIS, MISSOURI, 63131

Engineers
 Scientists
 Surveyors

7325 James Avenue, Suite 100
 Woodridge, IL 60517
 630.724.9200 voice
 630.724.0364 fax
 v3co.com

