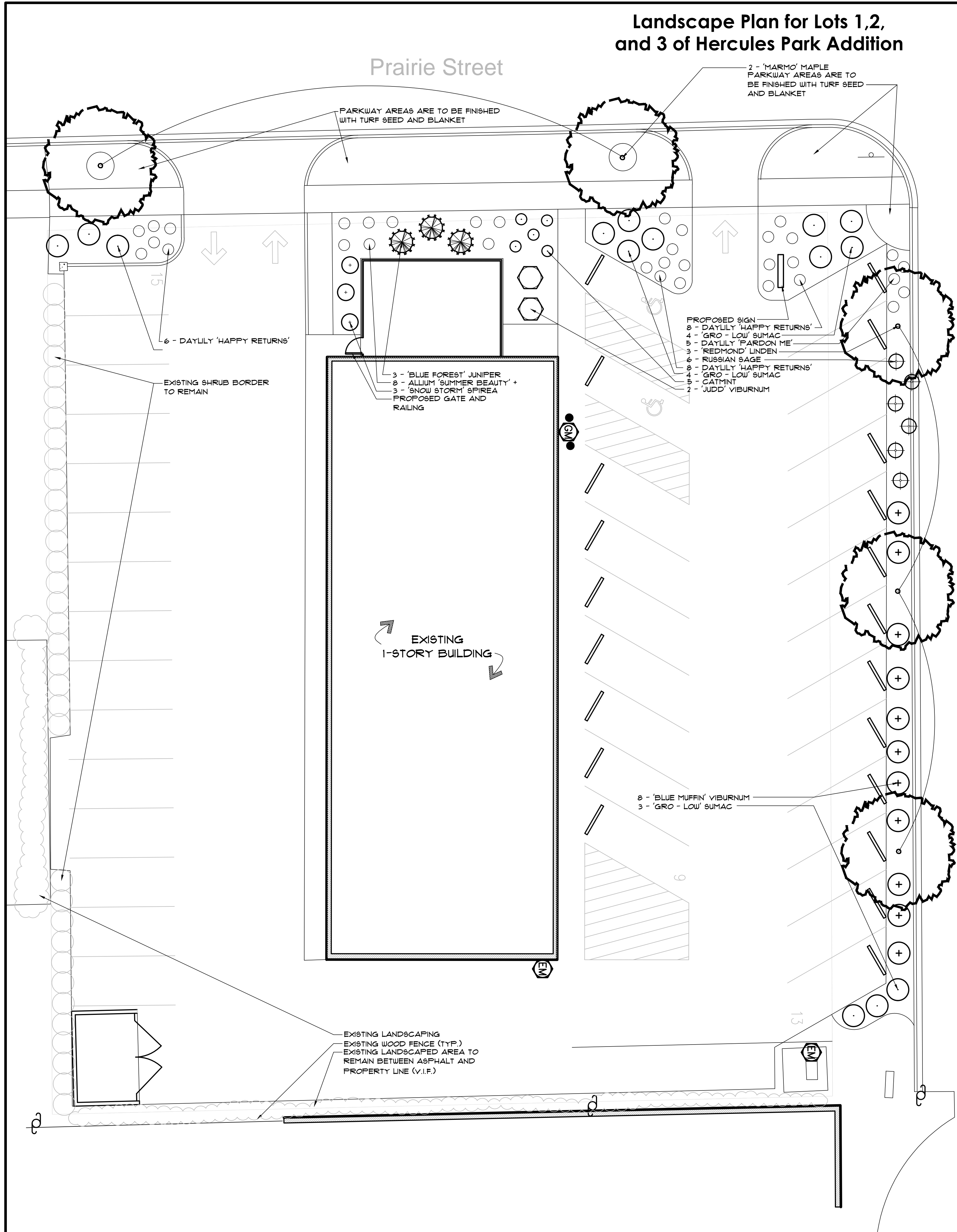


Landscape Plan for Lots 1,2, and 3 of Hercules Park Addition

Prairie Street

Hartford Ave.



Plant List

Scientific Name	Comon Name	Quantity	Size
Trees			
Acer x freemanii 'Marmo'	Marmo Maple	2	2.5' cal
Tilia cordata 'Redmond'	Redmond Linden	3	2.5' cal
Shrubs			
Juniperus sabina 'Blue Forest'	Blue Forest Juniper	3	5 gal
Rhus aromatica 'Gro - Low'	Gro - Low Sumac	14	5 gal
Spiraea x media 'Darsnom'	Snow Storm Spirea	3	5 gal
Viburnum dentatum 'Christom'	Blue Muffin Viburnum	11	30" / 5 gal
Viburnum x 'Juddii'	Judd Viburnum	2	30" B+B
Perennials			
Allium 'Summer Beauty'	Allium 'Summer Beauty'	8	1 gal
Hemerocallis 'Happy Returns'	Happy Returns Daylily	18	1 gal
Hemerocallis 'Pardon Me'	'Pardon Me' Daylily	5	1 gal
Nepeta x faassenii 'Walker's Low'	Catmint	5	1 gal
Pervoskia atriplicifolia	Russian Sage	6	1 gal

Landscape Data Table: Landscape Plan		
Description	Value	Unit
a) Tax/Parcel Identification Number(s) (PINs): 15-29-226-009, 15-29-228-011, 15-29-228-012		
b) Total Property Size	0.53 Acres	
c) Total Lot Coverage (Buildings and pavement)	22,977	Square Feet
d) Open space / landscaping	22,957	Square Feet
e) Total Street Frontage (existing and proposed)	96%	Percent
f) Building Foundation perimeter (Typical)	1,109	Linear Footage
g) Total Perimeter Yard	142	Linear Footage
h) Neighborhood Border	304	Linear Footage
i) Total High-water Line for all Stormwater Detention/Retention Facilities	608	Linear Footage
j) Number of Surface Parking Lot Spaces	-	Linear Footage
k) Total Number of Residential Dwelling Units	37	Units
l) Total Number Single Family Corner Lots	-	Units

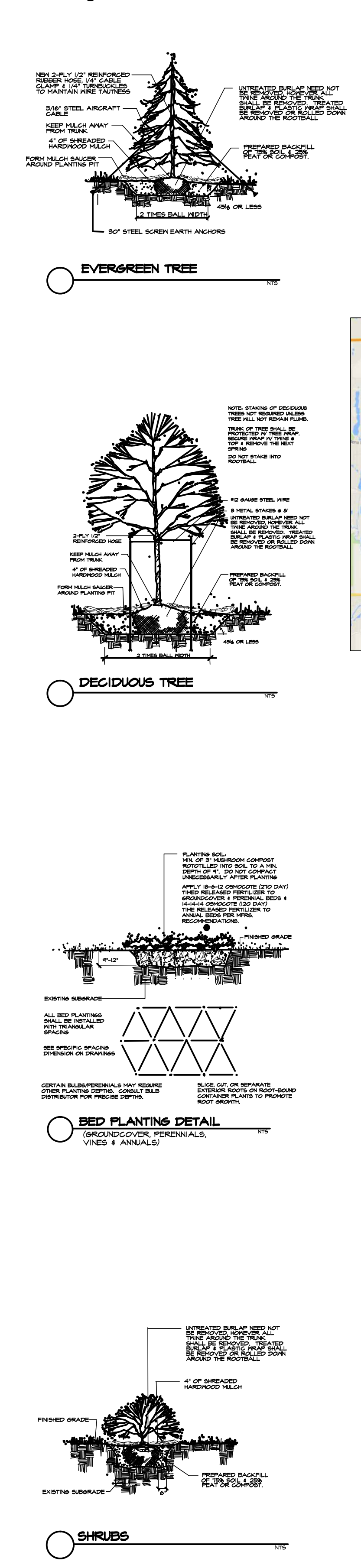
Plant Notes:

- The contractor shall provide and install all plant materials in quantities sufficient to complete the planting shown on the drawing, unless noted otherwise. All plants shall comply with the requirements of the current American Standard for Nursery Stock, published by the American Association of Nurserymen. Plants shall meet size, genus, species, and variety. Plants shall be in good health, free of disease, insects and defects. No "Park Grade" material shall be accepted. Plants may be substituted upon the approval of the Landscape Architect or the governing municipality prior to installation.
- All plants shall be watered during the first 24-hour period after installation. Contractor is responsible for watering sod and seed areas until first mowing. A schedule must be agreed upon with the owner, before sod is installed, of whom, when and how sod is to be properly watered. The contractor is responsible for site visits to ensure the proper watering is being done for establishment and health of sod.
- Plants shall be balled and burlapped or container grown as specified. No root bound material shall be accepted and all wrapping material made of synthetics or plastics shall be removed at the time of planting. It is the contractor's option to roll back burlap from the top of the ball.
- All shrub beds and tree rings shall receive 4" depth of shredded hardwood mulch. All new tree rings shall be 5' in diameter. All perennials shall receive 2" depth of hardwood mulch.
- All plants shall be set plumb. It is the contractor's option to stake deciduous tree, but it is also the contractor's responsibility to ensure plants remain plumb until the end of the guarantee period. All deciduous trees shall be wrapped to prevent winter damage, which shall be removed after the first winter by the installing contractor. All evergreen trees must be staked.
- Prune, thin out, and shape new plants in accordance with standard horticultural practices to retain their natural character. Do not cut tree leader, but be sure to remove any injured, damaged, dead, or crossed branches from the plant at the time of installation. All plant material shall be planted to finished grade equivalent to the plant's original grade before digging.
- All ground cover and flowerbeds shall receive a 6" depth of organic compost, which shall be rototilled into the existing topsoil utilizing two lifts. Trees and shrubs shall be back filled with good existing topsoil.
- The contractor shall locate the existence of all underground utilities prior to starting. The contractor must also keep the pavement and work area in a neat and orderly condition throughout the construction process.
- Owner shall provide contractor with finish grade from the approved grading plan to a tenth of an inch with sufficient quality topsoil. If imported topsoil is required it shall be done at the owners expense. The general contractor should remove all building construction debris. The landscape contractor should be responsible for landscape debris removal.
- Sod shall extend to all property lines, unless otherwise noted.
- All edging to be a spaded natural edge, no steel or plastic edging shall be used unless otherwise noted.
- Information contained in "Plant Notes" take precedence over other information.

NOTE: ALL TREES AND SHRUBS SHALL BE PLANTED NO LESS THAN 10' HORIZONTALLY FROM UTILITY STRUCTURES

Landscape Material Data Table: Landscape Plan			
Symbol Legend	Description	Value	Unit
[Tree Symbol]	a) Total Canopy Trees		Count
	Acer x freemanii 'Marmo'	40%	Percent of Canopy Trees
	Tilia cordata 'Redmond'	2.5"	Caliper at Installation (inches)
	genus #3: List Potential Species	60%	Percent of Canopy Trees
		2.5	Caliper at Installation (inches)
	b) Total Evergreens		Count 0
	genus #1: List Potential Species		Percent of Evergreens
	genus #2: List Potential Species		Height at Installation (feet)
	genus #3: List Potential Species		Percent of Evergreens
	genus #3: List Potential Species		Height at Installation (feet)
[Shrub Symbol]	c) Total Understory Trees		Count 0
	genus #1: List Potential Species		Percent of Understory Trees
			Caliper at Installation (inches)
	genus #2: List Potential Species		Or Multi-stemmed Height at Installation (feet)
			Percent of Understory Trees
	genus #3: List Potential Species		Or Multi-stemmed Height at Installation (feet)
			Percent of Understory Trees
	genus #3: List Potential Species		Caliper at Installation (inches)
			Or Multi-stemmed Height at Installation (feet)
	[Deciduous Shrub Symbol]	d) Total Deciduous Shrubs	
Rhus aromatica 'Gro-Low'		47%	Percent of Shrubs
		18"	Height at Installation (inches)
Spiraea x media 'Darsnom'		10%	Percent of Shrubs
		24"	Height at Installation (inches)
Viburnum dentatum 'Christom'		37%	Percent of Shrubs
	30"	Height at Installation (inches)	
[Evergreen Shrub Symbol]	e) Total Evergreen Shrubs		Count 3
	Juniperus sabina 'Blue Forest'	100%	Percent of Shrubs 100%
		18"	Height at Installation (inches)
[Ornamental Grass Symbol]	f) Ornamental Grasses		Count 0
	genus #1: List Potential Species		Size
	genus #2: List Potential Species		Size
			Size
[Perennial Symbol]	f) Perennials		Count 47
	Allium 'Summer Beauty'	1 gal	
	Hemerocallis 'Happy Returns'	1 gal	
	Hemerocallis 'Pardon Me'	1 gal	
	Nepeta x faassenii 'Walker's Low'	1 gal	
Pervoskia atriplicifolia	1 gal		

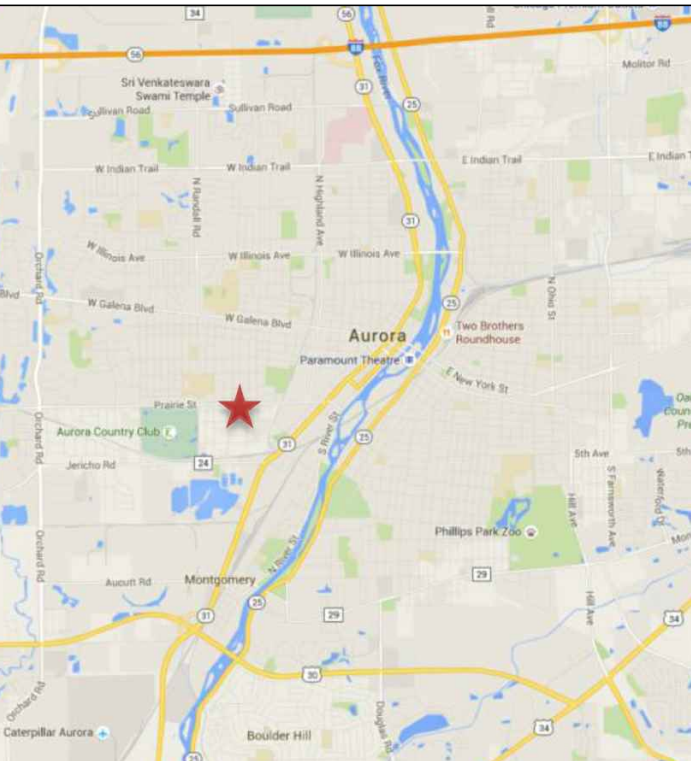
Planting Details



Prepared by:
Mc ANALLY
 Landscaping

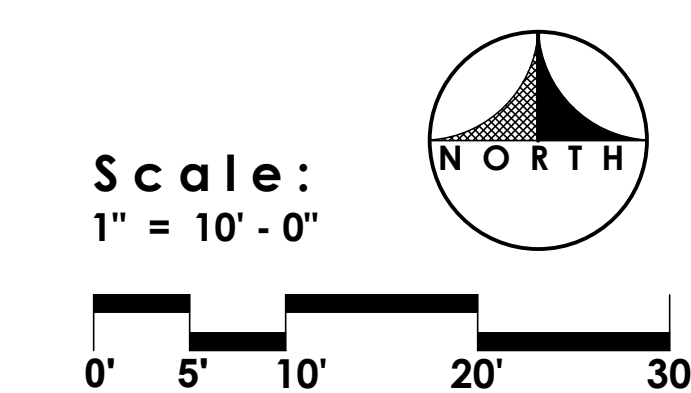
Prepared for:
 Petitioner:
 Michael Poulakidas
 JTE Family Properties, LLC,
 c/o Michael Poulakidas
 346 N. Lake Street
 Aurora, IL 60506
 Developer:
 Konrad Construction
 2400 W. Johnsborg Road,
 Johnsborg, IL 60051
 Project Location:

1030 - 1034 Prairie Street
 Aurora, IL



15-29-26-009,
 15-29-226-011,
 15-29-226-012

Landscape Plan for Lots 1,2, and 3 of Hercules Park Addition



Issued Date:
 7-27-13
 Rev. 8-10-15
 Rev. 8-17-15
 Rev. 9-22-15

L1