






BEING A SUBDIVISION OF THAT PART OF THE NORTH HALF OF SECTION 18 TOWNSHIP 37 NORTH,
RANGE 9, EAST OF THE THIRD PRINCIPAL MERIDIAN, IN WILL COUNTY, ILLINOIS.

A north arrow pointing upwards, labeled 'N' in the center. Below the arrow is a graphic scale bar with alternating black and white segments. The scale is marked with the numbers 150, 0, 75, 150, 300, and 600. Below the scale bar, the text '(IN FEET)' is centered, followed by the conversion '1 inch = 150 ft'.

COORDINATES AND BEARINGS ARE BASED UPON THE ILLINOIS STATE PLANE COORDINATE SYSTEM, EAST ZONE (NAD 83), ADJUSTED TO GROUND VALUES, AS ESTABLISHED BY A REAL-TIME KINEMATIC (RTK) GLOBAL NAVIGATION SATELLITE SYSTEM (GNSS) UTILIZING THE TRIMBLE VRS NOW NETWORK.

C.E. = CITY EASEMENT HEREBY GRANTED

	=	PROPERTY LINE
	=	LOT LINE
	=	RIGHT OF WAY LINE
	=	EASEMENT LINE
	=	SECTION LINE
	=	BUILDING SETBACK LINE
	=	SET CONCRETE MONUMENT

CITY OF AURORA
44 EAST DOWNER PLACE, AURORA, IL 60505

[illegible]

Mannhard
CONSULTING

333 East Burnfield Road, Suite 400, Lombard, IL 60148 (630) 951-1600 / Fax: (630) 956-2222
www.mannhard.com

Civil Engineers | Surveyors | Water Resource Engineers | Water & Waste Water Engineers
Construction Managers | Professional Development Courses | Construction Management Software

PROPOSED DEVELOPMENT FOR:

OWNER: LINCOLN PRAIRIE AURORA LLC
PRTITIONER: PULTE HOME COMPANY
1900 E. SCHLAUB RD, SUITE 300
CHAUMBURG, IL 60173
CONTACT: MATT BROLLEY, P.E.
(630) 777-2973

CITY OF AURORA, ILLINOIS

FINAL PLAT OF SUBDIVISION

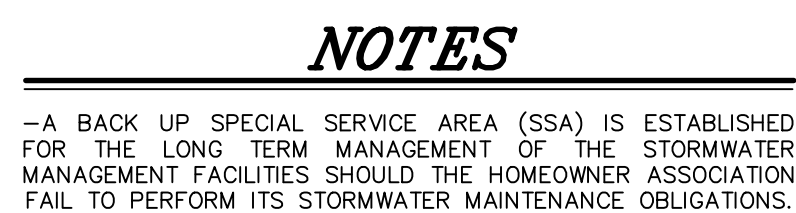
PROJ. MGR.: JL
 PROJ. ASSOC.: JLD
 DRAWN BY: PGA
 DATE: 01/10/24
 SCALE: 1"=150'

SHEET

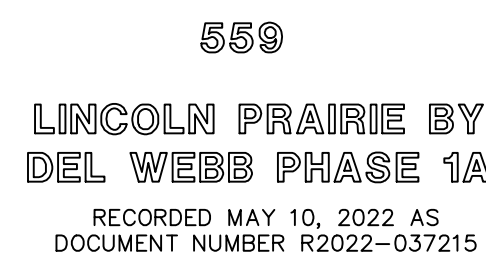
1 OF 4

PULAUIL01

April 11, 2024 - 13:19 Dwg Name: P:\Pulaull01\dwg\Surv\Final Drawings\Plat of Subdivision\Final Plat\Lincoln Crossing South\01-PUJLAU01-PS-Lincoln Crossing South.dwg Updated By: panderson



<i>SHEET INDEX</i>	
SHEET 1:	OVERALL BOUNDARY, LEGAL DESCRIPTION
SHEET 2-3:	LOT AND EASEMENT DETAILS
SHEET 4:	CERTIFICATES

[illegible]

Manhard
CONSULTING

335 East Caldwell Avenue
2nd Floor
2nd Engineers | Surveying | Water Resource Engineers | Water & Waste Water Engineers
Construction Management | Environmental Engineering | Environmental Science | Planning

PROPOSED DEVELOPMENT FOR:

OWNER: LUTILE PRAIRIE AURORA LLC
PETITIONER: PULP HOME COMPANY
1900 E GOLF ROAD, SUITE 300
SCHAUMBURG, IL 60173
CONTACT: 630.291.1000

CROSSING SOUTH SUBDIVISION PHASE 1A

CITY OF AURORA, ILLINOIS

FINAL PLAT OF SUBDIVISION

PROJ. MGR.:	JJ
PROJ. ASSOC.:	JJD
DRAWN BY:	PGA
DATE:	01/10/24
SCALE:	1" = 150'

SHEET

2 OF **4**

PULAUJL01

