

# NANTUCKET

DRAWERS AND TRAYS

A PLACE FOR EVERYTHING.

## TECH DATA

SHELVING SYSTEMS

## NANTUCKET DRAWERS AND TRAYS FOR 4-POST SHELVING

Just like the island that inspired its name, the Nantucket system of high-quality drawers and trays can easily accommodate growth and change. Designed to bring flexibility and versatility to any interior environment, Spacesaver's Nantucket is compatible with 4-post shelving and works seamlessly with all the other accessories in Spacesaver's 4-Post shelving line.

### FEATURES

#### OPTIMIZATION

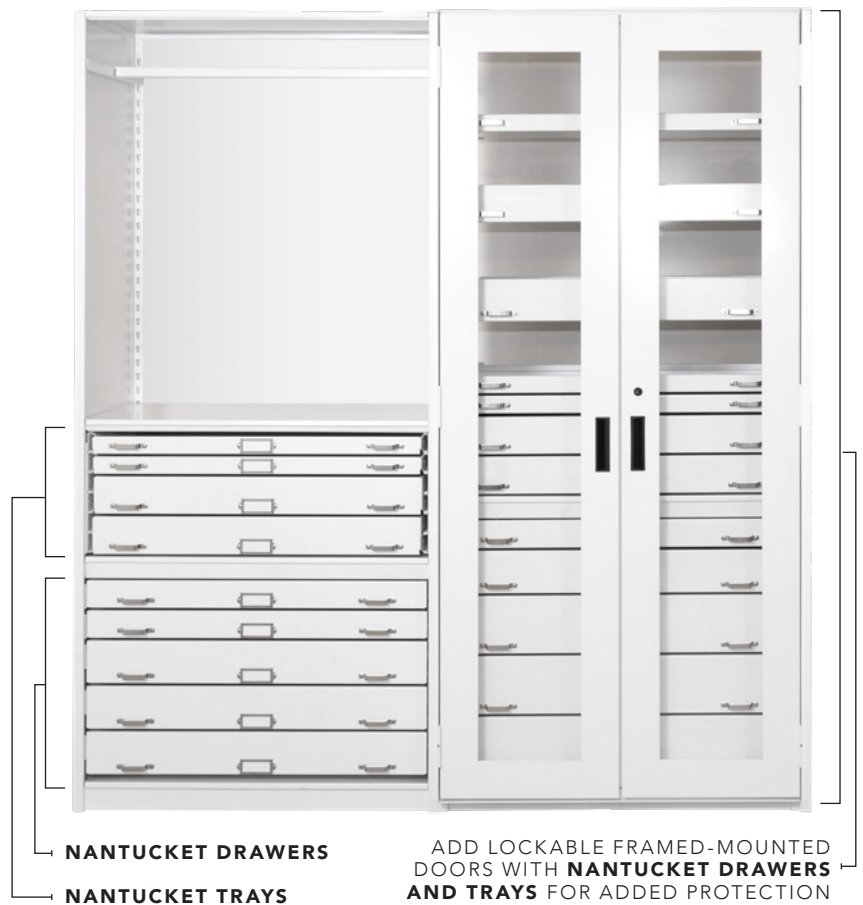
Take full advantage of your vertical space by pairing drawers and trays with other accessories.

#### RECONFIGURATION

As your needs change over the years, you can mix, match, add, and rearrange accessories without special tools.

#### COMPLEMENTARY AESTHETICS

Nantucket complements any interior environment. Create a functional, well-organized system that's customized for your needs and your interior design.



### BENEFITS

#### QUALITY & DURABILITY

- Made in the USA of heavy-duty steel
- Lifetime limited warranty
- Easy to use and easy to access

#### FLEXIBILITY

- Combines drawers and trays with other interchangeable 4-Post accessories
- Add the system to your existing Spacesaver 4-Post shelving

#### COST-EFFECTIVE

- Add the system to your existing Spacesaver 4-Post shelving units and reconfigure as your needs change.
- Inexpensive alternative to the Viking Preservation Cabinet 920 series when sealed cabinets are not required



## NANTUCKET TRAYS

Trays are designed to keep items secure and organized. They can be fully removed from the unit when contents are needed for work or study.

- Tray heights available in 2" and 4".
- Ability to mix and match tray sizes.
- Fully removable for items on-the-go.
- Safety stop feature comes standard.
- Trays allow 72% extension prior to safety stop engagement.
- 100 lb. weight capacity.
- Trays include (1) nickel-plated label holder for clear identification of stored items and (2) nickel-plated handles for easy access to stored items.
- Tray tracks come standard in perma-slide white for ease of movement while tray bodies are available in 32 non-off-gassing powder-coat paint options.
  - Choose Cottonwood for the rest of the tray and the shelving unit to match the tray tracks.
- Nantucket Rolled Textile Trays are available in 4" nominal height and includes (3) rolled textile rods.
  - Additional rolled textile rods are available for purchase.
  - Safety stop feature comes standard.

### STANDARD TRAY DIMENSIONS

WIDTH	24" - 60" <small>(1" increments)</small>
DEPTH	18" - 36" & 38" - 56" <small>(1" increments) (2" increments)</small>
HEIGHT	2", 4"

- Usable storage depth = Nominal Tray depth – 2.93"
- Usable storage width = Nominal Tray width – 3.408"

Usable storage height (clear height to the next tray or drawer):

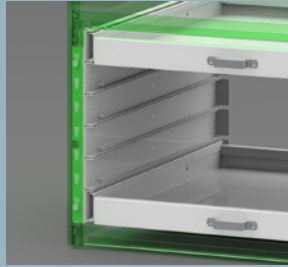
- 2"H Tray usable storage height = 1.54"
- 4"H Tray usable storage height = 3.54"



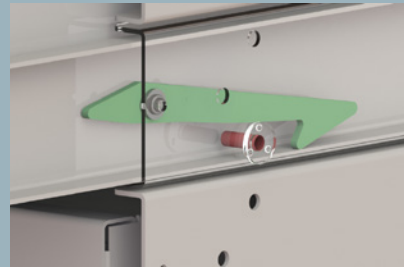
## INTERIOR CONFIGURATION

### Safety Stop Panel Inserts

Nantucket Trays utilize a Channel-in-Channel (CIC) panel that mounts directly to Spacesaver's closed 4-post uprights for easy assembly. These safety-stop panels allow Nantucket Trays to be adjustable on 2" increments and come in single-track, 3-track, or 6-track pairs.



- 2"H channels
- CIC Panel tracks come standard in perma-slide white for ease of movement.
- CIC Panels integrate with Nantucket Trays to provide safety stop mechanisms that prevent trays from accidentally extending.



### Safety Stop Feature

Prevents trays from unintended removal from the cabinet. The interference safety stop feature will

engage at about 72% of full tray extension. The safety stop may also be disengaged, allowing for full tray removal by lightly pushing down on the safety stop feature as pictured.

# NANTUCKET DRAWERS

Organize supplies, tools, equipment, and more with drawers in your choice of three heights. Soft-close functionality protects stored items and prevents slamming.

- Drawer heights available in 3", 4.5", and 6".
- Ability to mix and match drawer sizes.
- Soft-close, full-extension ball bearing drawer slides with built-in detent.
- Drawer bodies and brackets assemble with ease to Spacesaver's closed 4-Post uprights.
- 100 lb. weight capacity.
- Drawers include (1) nickel-plated label holder for clear identification of stored items and (2) nickel-plated handles for easy access to stored items.
- Drawers are adjustable on 1.5" H increments.
- Drawer bodies and mounting brackets are available in 32 Non-off-gassing powder-coat paint options.
- Nantucket Rolled Textile Drawers are available in 4.5" nominal height and include (3) rolled textile rods.
  - Additional rolled textile rods are available for purchase.

## STANDARD DRAWER DIMENSIONS

WIDTH	24" - 60" <small>(1" increments)</small>
DEPTH	18" - 36" <small>(1" increments)</small>
HEIGHT	3", 4.5", 6"

- Usable storage width = Nominal Drawer width – 3.672"
- Usable storage depth = Nominal Drawer Depth – 0.712"

Usable storage height (clear height to the next tray or drawer):

- 3"H Drawer usable storage height = 2.54"
- 4.5" Drawer usable storage height = 4.04"
- 6"H Drawer usable storage height = 5.54"





## 4-POST SHELVING SYSTEM CONSIDERATIONS

Here are the essential details you'll need to design a Nantucket system.

- Nantucket drawers and trays can be used alongside standard 4-Post accessories to offer the most complete and flexible storage solution.
  - Universal shelves, pull-out reference shelves, dividers, hanger bar, framed and hinged doors, storage and file drawers, EZ-Rail Element and hanging bins, slat-wall accessories, and more (see 4-Post and Case-Type Shelving Brochure).
- Nantucket Drawers and Trays are compatible with Spacesaver's closed 4-Post uprights (not compatible with open or case-type 4-Post).
- Available in single face and single face double-deep 4-Post configurations.
  - Trays with depths from 18"– 36" require single face 4-Post configurations.
  - Trays with depths from 38"– 56" require single face double-deep 4-Post configurations.
- Back Panels and Back Holders are required.
- Shelf supports and shelves are required every 49.5"H increments, between Nantucket accessories.
- Floor anchoring is required for static systems
- Optional Doors.
  - Framed or Extended Hinged Doors available with or without locks.
- Standard mobile rules apply for Nantucket Drawers and Trays in mobile applications.



Spacesaver Corporation  
1450 Janesville Avenue  
Fort Atkinson, WI 53538-2798  
800.492.3434  
[www.spacesaver.com](http://www.spacesaver.com)