

**SITE KEY MAP**



**PLANT PROTECTION NOTES**

- ALL EXISTING PLANTS AND PLANT BED LOCATIONS AND SIZES ARE TO BE VERIFIED IN THE FIELD BY THE CONTRACTOR. THE CONTRACTOR SHALL NOTIFY THE LANDSCAPE ARCHITECT OF ANY DISCREPANCIES BETWEEN THE DRAWINGS AND ACTUAL FIELD CONDITIONS, PRIOR TO THE START OF CONSTRUCTION.
- ALL PLANTING TO REMAIN AS NOTED ON THE DRAWINGS ARE TO BE ENCLOSED WITH A TREE PROTECTION FENCE, PRIOR TO THE START OF CONSTRUCTION. THE FENCE SHALL CONSIST OF 4' TALL ORANGE PLASTIC FENCE WITH METAL POSTS SPACED NO FURTHER THAN 6' APART. THE FENCE IS TO BE LOCATED UNDER THE OUTER EDGES OF THE TREE'S CANOPY, BUT NO CLOSER THAN 5' AWAY FROM THE TREE'S TRUNK. FENCE TO BE LOCATED AT EDGES OF BEDS. LANDSCAPE ARCHITECT TO APPROVE FENCE LOCATION.
- NO MATERIALS OR VEHICLES SHALL BE STORED, DRIVEN OR PARKED WITHIN PROTECTION FENCING.
- ALL GRADING, CONSTRUCTION EQUIPMENT AND MATERIALS SHALL BE FORBIDDEN FROM ENCRoACHING WITHIN THE PROTECTION FENCING.
- CRUSHED LIMESTONE OR ANY MATERIALS THAT MAY BE DETRIMENTAL TO PLANTS SHALL NOT BE DUMPED WITHIN THE PROTECTION FENCING NOR SHALL THEY BE LOCATED AT ANY HIGHER ELEVATION WHERE DRAINAGE TOWARD THE PLANTS COULD CONCEIVABLY AFFECT THE HEALTH OF SAID PLANTS.
- IF IT IS THE CONTRACTOR'S OPINION THAT ANY OF THE PLANTS TO BE PRESERVED WILL BE NEGATIVELY AFFECTED DURING THE CONSTRUCTION PROCESS, THE LANDSCAPE ARCHITECT SHALL BE NOTIFIED IMMEDIATELY.
- THE CONTRACTOR IS TO MAINTAIN THE PROTECTION FENCING THROUGHOUT THE ENTIRE CONSTRUCTION PROCESS UNTIL NEW LANDSCAPING BEGINS AND THE LANDSCAPE ARCHITECT APPROVES REMOVAL OF THE FENCING.
- IF ROOTS OF ANY TREE TO REMAIN ARE EXPOSED, THE LANDSCAPE ARCHITECT IS TO BE CONTACTED AT ONCE.
- ALL TREES TO BE PRESERVED SHALL BE PRUNED TO REMOVE EXISTING DEAD WOOD TO COMPENSATE FOR ROOT LOSS DURING CONSTRUCTION BY A QUALIFIED ARBORIST WITH A MINIMUM 5 YEARS EXPERIENCE AT THE DIRECTION OF THE LANDSCAPE ARCHITECT.
- IF IT IS THE CONTRACTOR'S OR ARBORIST'S OPINION THAT ANY TREE TO BE PRESERVED SHALL REQUIRE ROOT PRUNING, FERTILIZATION OR ANY OTHER HORTICULTURAL ACTIVITIES NOT SPECIFIED IN THE CONTRACT DRAWINGS, THE LANDSCAPE ARCHITECT SHOULD BE NOTIFIED PRIOR TO THE WORK. SAID HORTICULTURAL ACTIVITIES SHALL BE PERFORMED ONLY BY A QUALIFIED ARBORIST UNLESS APPROVED BY THE LANDSCAPE ARCHITECT AND SHALL BE AT THE CONTRACTOR'S EXPENSE IF DUE TO HIS NEGLIGENCE.
- IF THE CONTRACTOR DAMAGES A TREE OR ANY EXISTING PLANT BEDS TO BE PROTECTED SO THAT IT DOES NOT SURVIVE HE SHALL BE RESPONSIBLE FOR REPLACING THE TREE OR PLANTS IN KIND OR REPLACING IT WITH TREES ABOUT THE SAME NUMBER OF CALIPER INCHES (MEASURED 6" ABOVE THE GROUND). THE LANDSCAPE ARCHITECT IS TO APPROVE THE REPLACEMENT TREES.

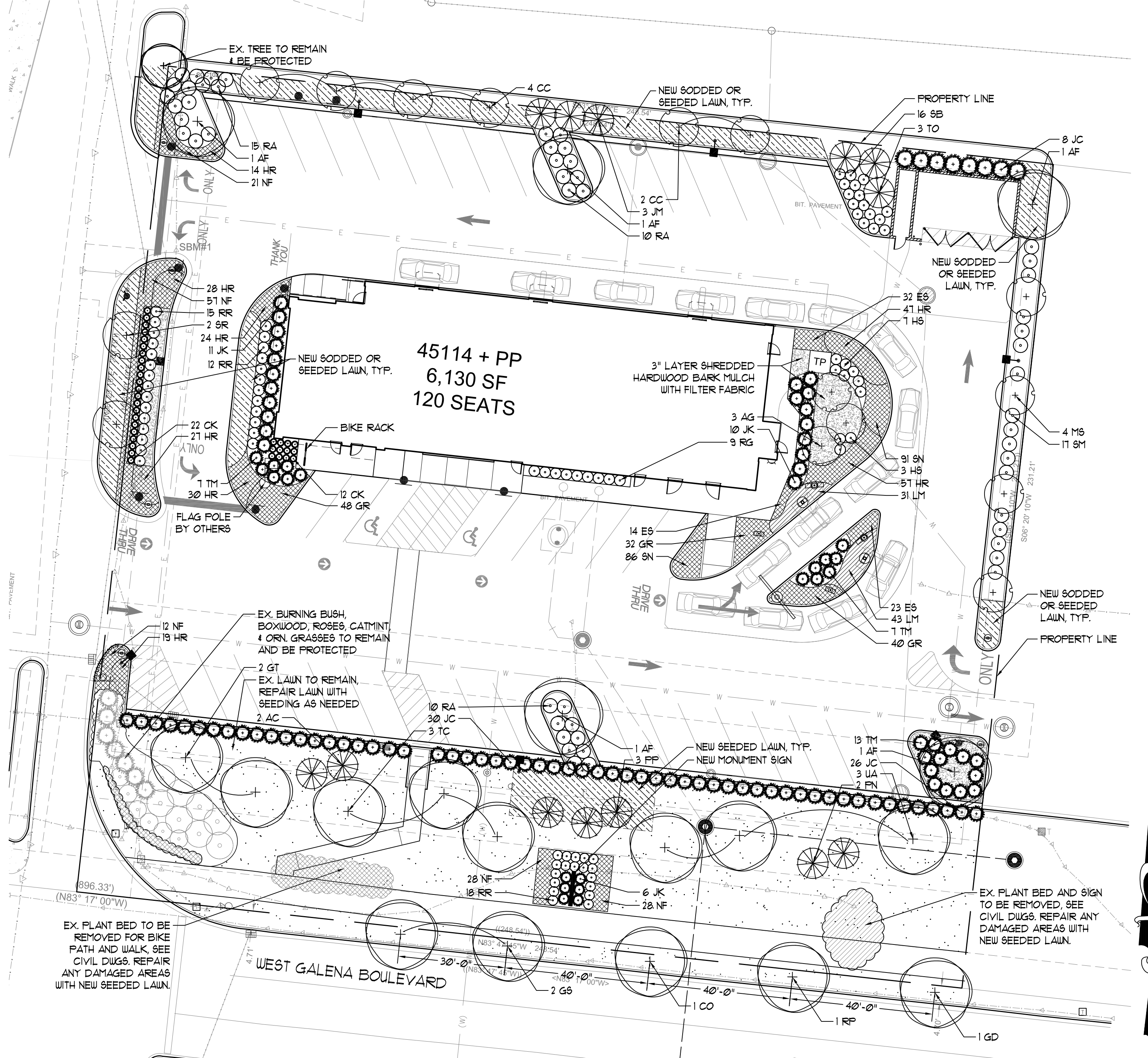
**PLANT LIST**

CODE	BOTANICAL NAME	COMMON NAME	SIZE	QUANTITY	ADDITIONAL NOTES
<b>DECIDUOUS TREES</b>					
AF	ACER X FREEMANI 'MARMO'	MARMO MAPLE	25" CAL.	4	SINGLE STEM
AG	AMELANCHIER X GRANDIFLORA 'AUTUMN BRILLIANCE'	AUTUMN BRILLIANCE SERVICEBERRY	8' HT	3	MULTI-STEM
CC	CRATAEGUS CRUS-GALLI VAR. INERMIS	THORNLESS COCKSPUR HAWTHORN	25" CAL.	6	SINGLE STEM
GT	GLEDITSIA T. VAR. INERMIS 'SKYCOLE'	SKYLINE HONEYLOCUST	25" CAL.	2	SINGLE STEM
MS	MALUS 'SPRING SNOW'	SPRING SNOW CRABAPPLE	25" CAL.	4	SINGLE STEM
SR	SYRINGA RETICULATA 'IVORY SILK'	IVORY SILK JAPANESE TREE LILAC	25" CAL.	2	SINGLE STEM
TC	TILIA CORDATA GREENSPIRE 'FNI 6025'	GREENSPIRE LITTLELEAF LINDEN	25" CAL.	3	SINGLE STEM
UA	ULMUS AMERICANA 'PRINCETON'	PRINCETON ELM	25" CAL.	3	SINGLE STEM
<b>EVERGREEN TREES</b>					
AC	ABIES CONCOLOR	WHITE FIR	6' HT	2	
JM	JUNIPERUS CHINENSIS 'MOUNTBATTEN'	MOUNTBATTEN JUNIPER	6' HT	3	
FN	FINUS NIGRA	AUSTRIAN PINE	6' HT	2	
FP	FICEA FUNGENS	COLORADO SPRUCE	6' HT	3	
<b>DECIDUOUS SHRUBS</b>					
HS	HYDRANGEA SERRATA 'MAKO' PP24842	TINY TUFF STUFF MOUNTAIN HYDRANGEA	3 GAL. / 18"	10	
RA	RHUS AROMATICA 'GRO-LOW'	GRO-LOW SUMAC	18" HT X 24" W	35	
RG	RIBES ALPINUM 'GREEN MOUND'	GREEN MOUND ALPINE CURRANT	5 GAL. / 24"	9	
RR	ROSA KNOCK OUT 'RADRAZZ'	KNOCK OUT SHRUB ROSE	3 GAL. / 18"	45	
SB	SPIRAEA BETULIFOLIA 'TOR'	TOR BIRCHLEAF SPIREA	5 GAL. / 18"	16	
SM	SYRINGA PATULA 'MISS KIM'	MISS KIM LILAC	5 GAL. / 30"	11	
<b>EVERGREEN SHRUBS</b>					
JC	JUNIPERUS CHINENSIS 'SEA GREEN'	SEA GREEN JUNIPER	5 GAL./24" SPD	64	
JK	JUNIPERUS CHINENSIS 'PFITZERANA KALLAYS'	KALLAY'S COMPACT PFITZER JUNIPER	5 GAL./24" SPD	21	
TM	TAXUS X MEDIA 'EVERLOW'	EVERLOW YEU	30" SPD	20	
TO	THUJA OCCIDENTALIS 'TECHNY'	TECHNY ARBORVITAE	6' HT.	3	
<b>PERENNIALS, ORNAMENTAL GRASSES AND GROUNDCOVERS</b>					
CK	CALAMAGROSTIS ACUTIFOLIA KARL FOERSTER'	KARL FOERSTER FEATHER REED GRASS	1 GALLON	34	SPACED AS SHOWN
ES	ERAGROSTIS SPECTABILIS	PURPLE LOVE GRASS	1 GALLON	64	SPACED 15" OC.
GR	GERANIUM 'ROZANNE' PFI0175	ROZANNE GERANIUM	1 GALLON	126	SPACED 18" OC.
HR	HEMEROCALLIS 'HAPPY RETURNS'	HAPPY RETURNS DAYLILY	1 GALLON	222	SPACED 18" OC.
LM	LIRIOPE MISCARI 'BIG BLUE'	BIG BLUE LILYTURF	1 GALLON	74	SPACED 18" OC.
NF	NEPETA FAASSENII 'CAT'S MEOW' PFI24472	CAT'S MEOW CATMINT	1 GALLON	146	SPACED 24" OC.
SN	SALVIA NEMEROSA MARCUS 'HAUMANARC' PFI13322	MARCUS MEADOW SAGE	1 GALLON	111	SPACED 12" OC.

**LANDSCAPE DATA TABLE: PLANTING MATERIAL KEY**

CANOPY TREE EXISTING COUNT:	1
CANOPY TREES (MINIMUM SIZE 2.5 CALIPER) COUNT:	18
EVERGREEN TREES (MINIMUM SIZE 6 FEET) COUNT:	10
UNDERSTORY TREES (MINIMUM SIZE 2.5 CALIPER OR 8 FEET IF MULTI-STEMMED) COUNT:	15
EVERGREEN SHRUBS (MINIMUM OF 18 INCHES) COUNT:	130
DECIDUOUS SHRUBS (MINIMUM OF 18 INCHES) COUNT:	146
ORNAMENTAL GRASSES COUNT:	98
PERENNIALS COUNT:	671
ANNUALS COUNT:	0
GROUNDCOVER SQUARE FOOTAGE:	167
TURF (SEEDED) SQUARE FOOTAGE:	2,957
TURF (SOD) SQUARE FOOTAGE:	0
NATIVE PRAIRIE PLANTING SQUARE FOOTAGE:	0
NATIVE WETLAND PLANTING SQUARE FOOTAGE:	0

**LANDSCAPE PLAN FOR WEST AURORA PLAZA RESUBDIVISION LOT 2**



**LANDSCAPE PLAN**

**LANDSCAPE DATA TABLE: CTE'S PROVIDED**

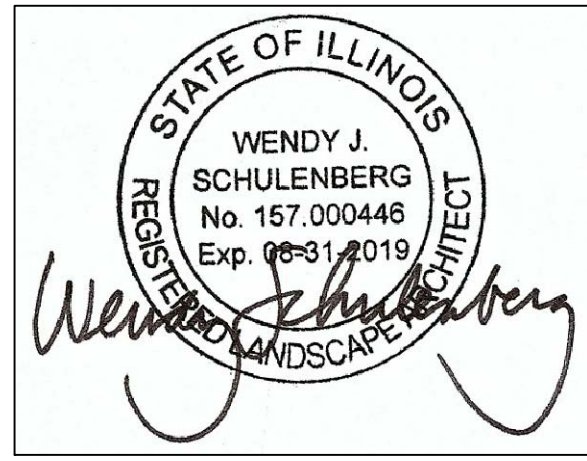
	CTE VALUE	COUNT PROVIDED	TOTAL CTE'S PROVIDED
CANOPY TREES	1	19	19
EVERGREEN TREES	3	10	4
UNDERSTORY TREES	3	15	5
DECIDUOUS SHRUBS	20	146	8
EVERGREEN SHRUBS	20	130	7
<b>TOTAL:</b>		<b>291</b>	<b>43</b>

**STREET TREE LIST**

CODE	BOTANICAL NAME	COMMON NAME	SIZE	QUANTITY	ADDITIONAL NOTES
<b>DECIDUOUS TREES</b>					
CO	CELTIS OCCIDENTALIS	HACKBERRY	25" CAL.	1	SINGLE STEM
GD	GYMOCLADUS DIOICUS 'ESPRESSO'	ESPRESSO KENTUCKY COFFEETREE	25" CAL.	1	SINGLE STEM
GS	GLEDITSIA T. VAR. INERMIS 'SKYCOLE'	SKYLINE HONEYLOCUST	25" CAL.	2	SINGLE STEM
RP	ROBINIA PSUEDOACACIA 'CHICAGO BLUES'	CHICAGO BLUES BLACK LOCUST	25" CAL.	1	SINGLE STEM

STREET TREES TO BE PLANTED IN ACCORDANCE WITH THE CITY OF AURORA'S ARBORICULTURAL SPECIFICATIONS MANUAL

**PETITIONER**  
 McDONALD'S USA, LLC  
 711 JORIE BOULEVARD, THIRD FLOOR  
 OAK BROOK, ILLINOIS 60523  
 630.750.4371  
 CONTACT: AL DANIELS



**McDonald's USA, LLC**  
 7325 Janes Avenue  
 Woodridge, IL 60517  
 630.724.9200 phone  
 630.724.9200 fax  
 www.v3co.com

**LANDSCAPE PLAN**  
 DESCRIPTION: MCDONALD'S - AURORA, IL  
 SHEET NO. L-1.0  
 LANDSCAPE PLAN

DATE: 04-05-18  
 DRAWN BY: MMB  
 STD. ISSUE DATE: 04-05-18  
 REVIEWED BY: WS  
 DATE ISSUED: 04-09-18

REVISIONS PER CITY COMMENTS  
 3 08/14/18  
 2 07/25/18  
 1 06/15/18

DATE: 06/15/18  
 REV: 1

DESCRIPTION: VISIO - Virtutes, Virtute... The Vision to Transform with Excellence®

06240.139 - LANDSCAPE PLAN

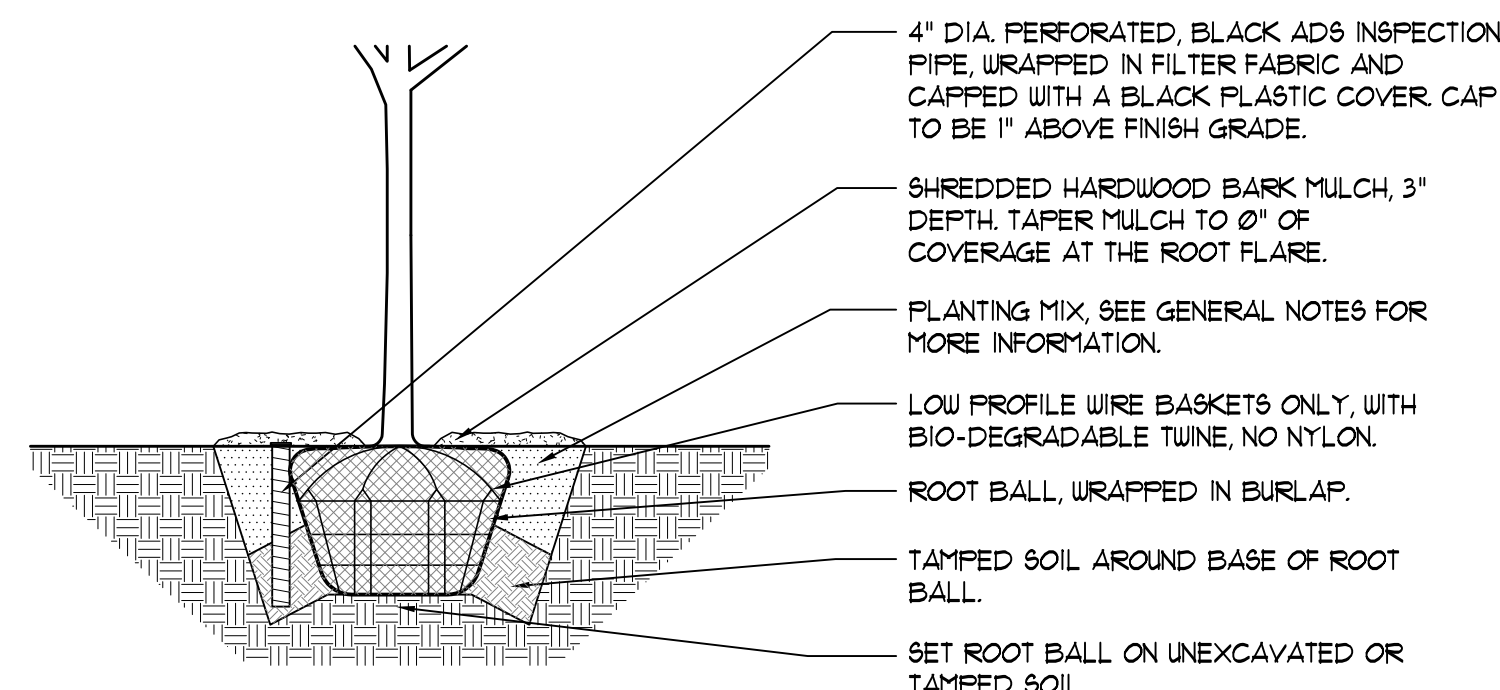
**IRRIGATION NOTES**

1. A PLASTIC, AUTOMATIC, TIMER-ACTIVATED IRRIGATION SYSTEM SHALL BE PROVIDED FOR ALL LANDSCAPE AREAS. SEPARATE ZONES TO BE PROVIDED FOR LAWN AND PLANTED BEDS.
2. PROVIDE ROTARY AND MIST POP-UP SPRAYHEADS AS APPROPRIATE FOR THE PARTICULAR SIZE AND SHAPE OF LAWN OR PLANTING AREA, WITH 60", HEAD TO HEAD SPACING. THERE SHALL BE NO OVER SPRAY ON ROADS OR SIDEWALKS.
3. PROVIDE WATER CONNECTION, BACKFLOW PREVENTER AND IRRIGATION CONTROLLER INSIDE THE BUILDING.
4. SIZE BOOSTER PUMP, IF REQUIRED, TO PROVIDE 50 GPM AND 40 PSI AT THE SPRINKLER HEADS.
5. PROVIDE SLEEVING AS NECESSARY AND COORDINATE SLEEVE INSTALLATION WITH THE GENERAL CONTRACTOR TO ELIMINATE FUTURE DAMAGE TO INSTALLED PAVEMENT.
6. ALL IRRIGATION EQUIPMENT SHALL BE LOW VOLUME CONTROL BY TORO, RAINBIRD, OR APPROVED EQUAL.
7. THE IRRIGATION CONTRACTOR SHALL SUBMIT SHOP DRAWINGS SHOWING THE DESIGN OF THE SYSTEM, INDICATING LAYOUT, WATER CONNECTION, HEADS, VALVES, PIPING, CONTROLLER, OTHER RELATED EQUIPMENT AND THE ASSOCIATED ELECTRICAL DIAGRAMS FOR APPROVAL PRIOR TO CONSTRUCTION. PROVIDE CATALOGUE CUTS FOR ALL DRIP LINE EQUIPMENT FOR APPROVAL.
8. PROVIDE AN AUTOMATIC RAIN SHUT-OFF.
9. PROVIDE A QUICK COUPLER IN OR ADJACENT TO EACH VALVE BOX, AND AT INTERVALS ALONG THE MAIN WITHIN 100' OF ALL NEW PLANTS, OR AS INDICATED ON THE PLANS.
10. THE IRRIGATION CONTRACTOR SHALL BE RESPONSIBLE FOR BLOWING OUT THE SYSTEM BY AIR COMPRESSION IN THE FALL FOLLOWING INSTALLATION AND TURNING ON THE SYSTEM IN THE FOLLOWING SPRING.
11. THE ENTIRE IRRIGATION SYSTEM SHALL BE GUARANTEED BY THE CONTRACTOR AS TO MATERIAL AND WORKMANSHIP INCLUDING SETTling OF BACKFILLED AREAS BELOW GRADE FOR A PERIOD OF ONE YEAR FOLLOWING THE DATE OF FINAL ACCEPTANCE OF THE WORK.
12. ALL WORK SHALL BE IN ACCORDANCE WITH LOCAL MUNICIPALITY STANDARDS, CODES AND ORDINANCES.

**GENERAL NOTES**

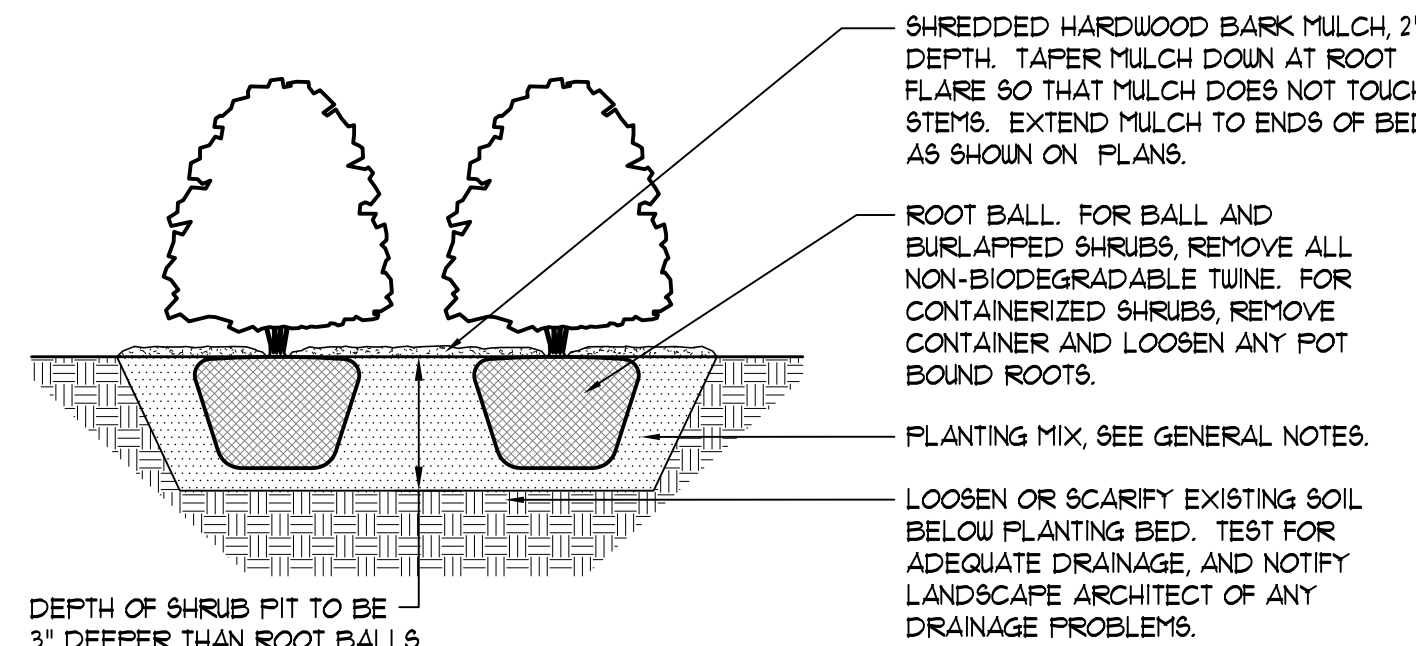
1. ALL DIMENSIONS ARE TO BE VERIFIED IN THE FIELD BY THE CONTRACTOR. NOTIFY THE LANDSCAPE ARCHITECT OF ANY DISCREPANCIES PRIOR TO STARTING WORK.
2. THE CONTRACTOR SHALL HAVE A MINIMUM OF FIVE YEARS EXPERIENCE WITH PROJECTS OF SIMILAR SIZE AND TYPE.
3. SPECIES AND SIZES OF PLANTS LISTED IN THE PLANT LIST ARE SUBJECT TO AVAILABILITY AT TIME OF INSTALLATION. IF SUBSTITUTIONS ARE REQUIRED, THE CONTRACTOR SHALL SUBMIT REQUESTS TO THE LANDSCAPE ARCHITECT FOR APPROVAL.
4. QUANTITIES SHOWN ON THE DRAWING AND IN THE PLANT LIST ARE PROVIDED ONLY FOR THE CONTRACTOR'S CONVENIENCE. THE NUMBER OF PLANT SYMBOLS SHOWN ON THE DRAWINGS SUPERCEDE ALL QUANTITIES PROVIDED. THE CONTRACTOR SHALL VERIFY ALL PLANT QUANTITIES ON THE DRAWINGS AND NOTIFY THE LANDSCAPE ARCHITECT OF ANY DISCREPANCIES PRIOR TO INSTALLATION. THE CONTRACTOR IS RESPONSIBLE FOR INSTALLING ALL PLANTS PER THE PLANT SYMBOLS SHOWN ON THE DRAWINGS.
5. ALL OVERHEAD AND UNDERGROUND UTILITIES ARE TO BE LOCATED PRIOR TO DIGGING OR EXCAVATION. IF UTILITIES OR OTHER OBSTRUCTIONS ARE DISCOVERED TO CONFLICT WITH GRADING, PLANT OR MATERIALS PLACEMENT, NOTIFY THE LANDSCAPE ARCHITECT SO THAT ADJUSTMENTS MAY BE MADE PRIOR TO PROCEEDING.
6. CONTRACTOR SHALL TAKE ALL PRECAUTIONS TO PROTECT EXISTING PLANTS, LAWN AREA, FENCES, SITE FEATURES AND PAVING TO REMAIN. ANY DAMAGE TO THESE EXISTING AREAS OR FEATURES SHALL BE REPLACED BY THE CONTRACTOR AT THEIR EXPENSE. DAMAGED LAWN AREAS SHALL BE TILLED, RE-GRADED, TOPSOIL ADDED AS NEEDED AND BE RESTORED WITH SOD. REPLACED FEATURES, PLANTS AND SOD SHALL BE WARRANTED BY THE CONTRACTOR FOR A PERIOD OF ONE YEAR.
7. PROVIDE POSITIVE DRAINAGE AT ALL TIMES. DO NOT OBSTRUCT THE NATURAL OR ENGINEERED DRAINAGE FLOW PATTERN. NOTIFY THE LANDSCAPE ARCHITECT OF ANY DRAINAGE CONCERNS.
8. IMPORTED TOPSOIL FOR THIS PROJECT SHALL BE FRIABLE LOAM OR SANDY LOAM, COMPRISED OF BETWEEN 20% AND 50% SILT, 10% AND 25% CLAY, AND 30% AND 60% SAND. THE PH LEVEL SHALL BE BETWEEN 6.0 AND 7.2 AND THE ORGANIC MATTER CONTENT SHALL BE BETWEEN 3% AND 6%. TOPSOIL SHALL BE FREE OF SEEDS, STONES, LARGE CLUMPS, ROOTS, LEAVES AND DEBRIS, AND SHALL NOT BE DELIVERED WHILE IN A FROZEN OR MUDDY CONDITION. CONTRACTOR SHALL PROVIDE A RECENT SOIL TEST ANALYSIS FOR ALL SOIL TO BE USED. THE ANALYSIS MUST INCLUDE THE INFORMATION REQUIRED ABOVE. IF TESTED TOPSOIL REQUIRES AMENDMENTS TO COMPLY WITH REQUIREMENTS, CONTRACTOR SHALL AMEND THE TOPSOIL, RE-TEST AND RESUBMIT THE ANALYSIS FOR APPROVAL PRIOR TO BRINGING THE TOPSOIL ON SITE.
9. EXISTING TOPSOIL FROM ON SITE THAT HAS BEEN STOCKPILED MAY BE USED IF IT MEETS THE REQUIREMENTS FOR IMPORTED TOPSOIL. THIS INCLUDES CONDUCTING SOIL TEST ANALYSIS AND ADDING AMENDMENTS AS NEEDED SO THAT THE SOIL COMPLIES WITH THE REQUIREMENTS.
10. SOD SHALL BE A TALL FESCUE BLEND SOD, SUCH AS BLACK BEAUTY, OR APPROVED EQUAL. BLUEGRASS BLEND SOD IS NOT ACCEPTABLE, UNLESS APPROVED BY THE LANDSCAPE ARCHITECT. SODDED LAWN WILL NOT BE ACCEPTED UNTIL WELL ROOTED AND MOWN TWICE.
11. LAWN GRASS SEED SHALL BE A TALL FESCUE BLEND, SUCH AS DRYSPPELL TALL FESCUE BLEND, AVAILABLE FROM NATIONAL SEED #888.963.1333. SEEDING SHALL ONLY BE INSTALLED WITHIN THE FOLLOWING DATES UNLESS APPROVED BY THE LANDSCAPE ARCHITECT:  
THE CONTRACTOR SHALL WARRANTY ALL SEED FROM DATE OF INSTALLATION UNTIL ACCEPTANCE BY THE LANDSCAPE ARCHITECT. THE CONTRACTOR IS RESPONSIBLE FOR ALL LAWN MAINTENANCE (WATERING, MOWING, FERTILIZING AND WEEDING) UNTIL ACCEPTANCE. THE CONTRACTOR SHALL REPLACE ALL SEEDING THAT HAS NOT FILLED IN OR HAS DIED OR BURNED OUT AT NO COST TO THE OWNER. FINAL ACCEPTANCE WILL BE GIVEN BY LANDSCAPE ARCHITECT ONCE THE SEEDING AREAS ARE FULL, VIABLE AND FREE OF BARE SPOTS AND THE LAWN HAS BEEN MOWED TWICE.
12. ALL PLANT MATERIAL MUST BE SPECIMEN QUALITY, TRUE TO SPECIES AND VARIETY, WITH FULL, DENSE AND HEALTHY FORMS. PLANTS THAT ARE NOT SPECIMEN QUALITY WILL NOT BE ACCEPTED. ALL PLANTS MUST HAVE BEEN LOCALLY GROWN AT A STATE INSPECTED AND CERTIFIED NURSERY, LOCATED WITHIN 50 MILES OF THE PROJECT SITE. CONTRACTOR TO PROVIDE STATE INSPECTION CERTIFICATES FROM NURSERIES.
13. ALL DECIDUOUS TREES THAT ARE 36" HEIGHT OR TALLER ARE TO HAVE FRESHLY DUG, BALLED AND BURLAPPED ROOT BALLS WITH SIZES THAT MEET THE STANDARDS OF THE AMERICAN NURSERYMEN'S ASSOCIATION. DECIDUOUS AND EVERGREEN SHRUBS THAT ARE 30" HEIGHT OR LESS MAY EITHER HAVE FRESHLY DUG, BALLED AND BURLAPPED ROOT BALLS OR MAY BE CONTAINER GROWN. ALL PERENNIALS, ORNAMENTAL GRASSES AND GROUNDCOVERS MUST BE CONTAINER GROWN. CONTAINER GROWN MATERIALS SHALL HAVE BEEN GROWN IN THEIR CURRENT CONTAINER FOR A PERIOD OF NO LESS THAN SIX MONTHS.
14. ALL TREES SHALL BE INSPECTED BY THE LANDSCAPE ARCHITECT, AT THE NURSERY, PRIOR TO DIGGING. TREES THAT ARE ACCEPTABLE WILL BE SEALED. ALL SEALS APPLIED BY THE LANDSCAPE ARCHITECT MUST REMAIN ON THE TREES AND ARE NOT TO BE REMOVED BY THE CONTRACTOR. ALL TREES MUST HAVE SEALS IN PLACE AT TIME OF ACCEPTANCE OR WILL BE AUTOMATICALLY REJECTED. HEELED-IN TREES WILL NOT BE ACCEPTED WITHOUT PRIOR APPROVAL FROM THE LANDSCAPE ARCHITECT.
15. ALL SHRUBS ARE TO BE APPROVED BY THE LANDSCAPE ARCHITECT PRIOR TO INSTALLATION. AN EXAMPLE SHRUB MAY BE TAGGED OR PICTURES MAY BE SUBMITTED FOR APPROVAL. ALL SHRUBS THAT DO NOT MATCH THE APPROVED EXAMPLE SHRUB IN SIZE AND FORM, WILL BE REJECTED. ALL OTHER SHRUBS MUST MEET THE MINIMUM SIZES GIVEN IN THE PLANT LIST AND BE SPECIMEN QUALITY. SHRUBS THAT DO NOT MEET THESE GUIDELINES WILL BE REJECTED.
16. PLANT MATERIAL SHALL ONLY BE INSTALLED WITHIN THE FOLLOWING DATES:  
DECIDUOUS TREES AND SHRUBS: APR 1 THROUGH NOV 15  
SPRING DIG DECIDUOUS TREES: APR 1 THROUGH OCT 15  
EVERGREEN TREES AND SHRUBS: APR 1 THROUGH NOV 1  
PERENNIALS AND GROUNDCOVERS: MAY 1 THROUGH OCT 15  
SODDED LAWN: APR 1 THROUGH NOV 15  
LAWN GRASS SEEDING: MAY 1 THROUGH JUN 15, AUG 15 THROUGH OCT 15  
  
WHEN FAVORABLE WEATHER CONDITIONS EXIST OUTSIDE OF THE PLANTING SEASON, THE CONTRACTOR MAY INSTALL PLANTS WHEN APPROVED BY THE LANDSCAPE ARCHITECT.
17. TEST TREE PITS AND PLANT BEDS FOR ADEQUATE DRAINAGE. FILL PLANT PIT WITH 12" OF WATER. IF WATER LEVEL DOES NOT DROP A MINIMUM OF ONE INCH PER HOUR, NOTIFY THE LANDSCAPE ARCHITECT OF DRAINAGE ISSUES.
18. PLANTING MIX FOR ALL PLANTINGS SHALL BE AS FOLLOWS. MIXING OF PLANTING MIX COMPONENTS SHALL BE THOROUGHLY BLENDED OUTSIDE THE PLANTING PITS, PRIOR TO PLANTING.  
TREES AND SHRUBS: 80% TOPSOIL, 10% SAND, 10% PINE FINES  
PERENNIALS AND ANNUALS: 10% TOPSOIL, 15% SAND, 15% PINE FINES
19. FOR PLANTING MIXES, SAND SHALL BE ANGULAR, COARSE SAND AND PINE FINES SHALL BE 3/8" SOUTHERN PINE BARK FINES.
20. BARK MULCH FOR TREES AND SHRUBS SHALL BE FINELY SHREDDED, PREMIUM HARDWOOD BARK MULCH, FREE OF TWIGS, LEAVES OR OTHER DEBRIS. BARK MULCH SHALL NOT CONTAIN ANY WOOD AND SHALL NOT BE ARTIFICIALLY COLORED.
21. LEAF MULCH FOR PERENNIALS SHALL BE COMPOSTED LEAF MATTER, COMPOSTED FOR A PERIOD OF BETWEEN 6 MONTHS AND ONE YEAR. LEAF COMPOST IS NOT ACCEPTABLE.
22. PRODUCT DATA, SUPPLIER NAME AND A SAMPLE OF THE FOLLOWING MATERIAL SHALL BE SUBMITTED FOR APPROVAL. SAMPLE FOR MATERIAL NOT REQUIRED ON THE DRAWING AND DETAILS MAY BE OMITTED.  
TOPSOIL, PLANTING BACKFILL MIX, SHREDDED HARDWOOD BARK MULCH, LEAF MULCH, FILTER FABRIC, INSPECTION TUBE AND CAP, DRAINAGE GRAVEL, DRAINAGE PIPE (12" SECTION), EROSION CONTROL BLANKET.
23. EXCAVATE NEW PARKING LOT ISLANDS OF ALL CONSTRUCTION DEBRIS AND EXTRANEOUS CONCRETE AND BACKFILL WITH TOPSOIL. BERM PLANTERS AND ISLANDS TO A HEIGHT OF 6" ABOVE TOP OF CURB.
24. ALL PLANT BEDS ARE TO BE WELL SHAPED 'SPADE CUT' EDGES, 3" DEPTH, IN LINES OR IN CURVES AS SHOWN ON THE DRAWINGS.
25. MAINTENANCE OF ALL LANDSCAPING SHALL BEGIN AT INSTALLATION AND CONTINUE UNTIL ACCEPTANCE. MAINTENANCE SHALL CONSIST OF WATERING, WEEDING AND ALL OTHER ACTIVITIES TO MAINTAIN A HEALTHY LANDSCAPE.
26. THE CONTRACTOR SHALL REQUEST AN INSPECTION OF LANDSCAPE PLANTING UPON SUBSTANTIAL COMPLETION FOR "ACCEPTANCE". REQUEST MUST BE SUBMITTED TO LANDSCAPE ARCHITECT AT LEAST TEN DAYS PRIOR TO ANTICIPATED INSPECTION. UPON INSPECTION THE LANDSCAPE ARCHITECT SHALL PREPARE A PUNCH LIST OF UNACCEPTABLE OR OUTSTANDING ITEMS. AFTER THE ITEMS HAVE BEEN SATISFACTORILY COMPLETED AND REVIEWED, THE LANDSCAPE ARCHITECT WILL RECOMMEND "ACCEPTANCE".
27. THE CONTRACTOR SHALL FURNISH THE OWNER WITH A LANDSCAPE MAINTENANCE MANUAL UPON ACCEPTANCE. THE LANDSCAPE MAINTENANCE MANUAL SHALL BE REVIEWED AND APPROVED BY THE LANDSCAPE ARCHITECT PRIOR TO SUBMISSION TO THE OWNER.
28. ALL PLANT MATERIAL SHALL BE GUARANTEED FOR A PERIOD OF ONE YEAR FROM DATE OF "ACCEPTANCE". AT OR NEAR THE END OF THE GUARANTEE PERIOD, THE CONTRACTOR SHALL REQUEST AN INSPECTION OF LANDSCAPE PLANTING FOR "FINAL ACCEPTANCE". REQUEST MUST BE SUBMITTED TO LANDSCAPE ARCHITECT AT LEAST TEN DAYS PRIOR TO ANTICIPATED INSPECTION. UPON INSPECTION THE LANDSCAPE ARCHITECT SHALL PREPARE A PUNCH LIST OF UNACCEPTABLE ITEMS. AFTER THE ITEMS HAVE BEEN SATISFACTORILY REPLACED OR REPAIRED, REVIEWED AND APPROVED, THE LANDSCAPE ARCHITECT WILL RECOMMEND "FINAL ACCEPTANCE".

LOCATE ALL UNDERGROUND UTILITIES PRIOR TO DIGGING. TREE PIT WIDTH TO BE EXTENDED 12" AROUND THE ENTIRE ROOT BALL AS SHOWN IN THE DETAIL BELOW. TEST TREE PIT FOR DRAINAGE PRIOR TO INSTALLING TREE. PRUNE OFF ALL DEAD, BROKEN OR SCARRED BRANCHES AND SHAPE PRUNE AS DIRECTED BY THE LANDSCAPE ARCHITECT. FOR TREES UP TO 4" CALIPER OR 12' HEIGHT, REMOVE APPROXIMATELY 5% - 10% OF THE OVERALL BRANCHING. LOCATE ROOT FLARE IN ROOT BALL AND SET TREE HEIGHT SO THAT ROOT FLARE IS FLUSH WITH FINISH GRADE. WATER IN THE PLANTING MIX THOROUGHLY, WHILE KEEPING THE TREE PLUMB. STRAIGHTEN TREE IF SETTling OCCURS. CONTRACTOR TO UN-TIE AND REMOVE TWINE FROM AROUND ROOT FLARE OF TREE AT THE END OF THE WARRANTY PERIOD.



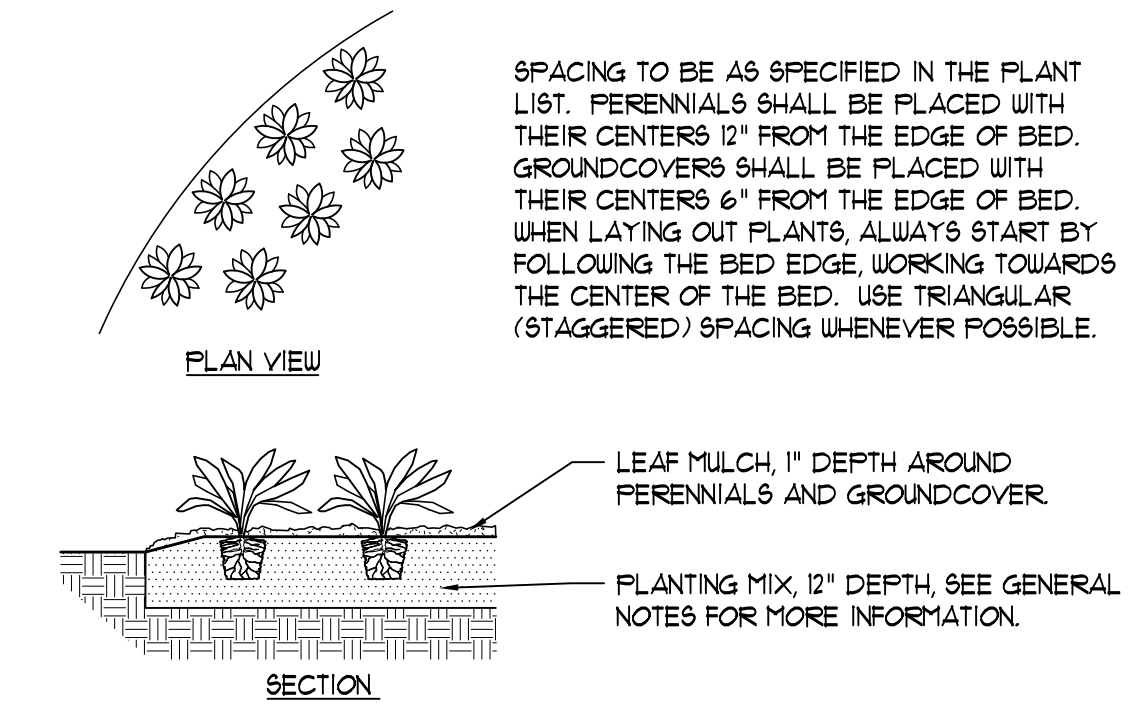
**1 DECIDUOUS TREE PLANTING DETAIL**  
NOT TO SCALE

LOCATE ALL UNDERGROUND UTILITIES PRIOR TO PLANTING. SHRUBS BEDS ARE TO BE EXCAVATED AS A SINGLE SHRUB PIT. EXTEND SHRUB PIT WIDTH TO EDGES OF PLANT BED AS SHOWN ON THE LANDSCAPE PLAN. LOCATE ROOT FLARE IN ROOT BALL AND SET SHRUB HEIGHT SO THAT ROOT FLARE IS FLUSH WITH FINISH GRADE. REMOVE TWINE FROM ROOT FLARE. BACKFILL AND WATER IN THE PLANTING MIX THOROUGHLY, WHILE KEEPING THE SHRUB PLUMB. STRAIGHTEN SHRUB IF SETTling OCCURS. PRUNE OFF ALL DEAD, BROKEN OR SCARRED BRANCHES, AND SHAPE PRUNE AS DIRECTED BY THE LANDSCAPE ARCHITECT. MULCH LIMITS FOR SHRUBS SHALL EXTEND TO ALL OUTER EDGES OF PLANTING BEDS, SEE LANDSCAPE PLAN FOR BED LAYOUTS.

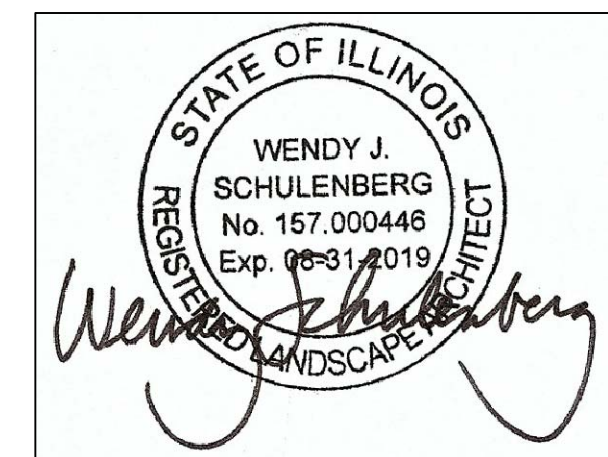


**2 SHRUB PLANTING DETAIL**  
NOT TO SCALE

LOCATE ALL UNDERGROUND UTILITIES PRIOR TO DIGGING. EXCAVATE ENTIRE PERENNIAL / GROUNDCOVER BED, AND BACKFILL WITH PLANTING MIX AS SPECIFIED. BED HEIGHT IS TO BE 2" ABOVE FINISH GRADE AND WELL DRAINED. MULCH LIMITS FOR PERENNIAL BEDS TO EXTEND TO ALL EDGES OF THE BEDS. SEE PLANS FOR BED LAYOUTS. SEE PLANT LIST FOR PLANT SPACING. GAPS BETWEEN PLANTS SHALL BE NO GREATER THAN THE SPECIFIED SPACING FOR THAT PARTICULAR PLANT.



**3 PERENNIAL AND GROUNDCOVER PLANTING DETAIL**  
NOT TO SCALE



DRAWN BY MBM	STD ISSUE DATE 04-05-18	REVIEWED BY WJS	DATE ISSUED 04-09-18	TITLE LANDSCAPE DETAILS	DESCRIPTION MCDONALD'S - AURORA, IL	SITE ADDRESS 12095 W. GALENA BOULEVARD	SHEET NO. L-2.0	LANDSCAPE DETAILS	PREPARED FOR: V3 Companies 7325 Janes Avenue Woodridge, IL 60517 630.724.9200 phone 630.724.9202 fax www.v3co.com
									REVISIONS FOR COORDINATION MBM
									DATE 08/14/18
									DATE 07/25/18
									DATE 06/15/18
									REV 1
									DESCRIPTION The Vision to Transform with Excellence®