

FIRE ACCESS PLAN

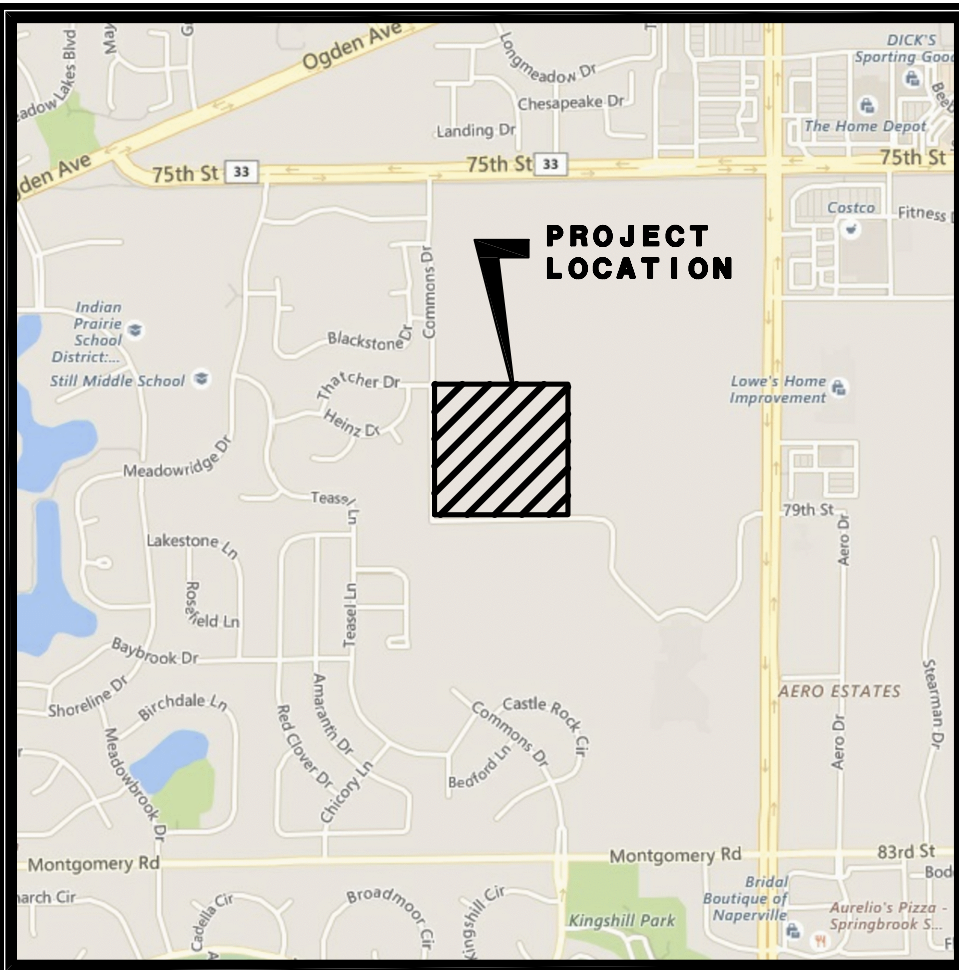
FOR GRAMERCY SQUARE

PARCEL DESCRIPTION

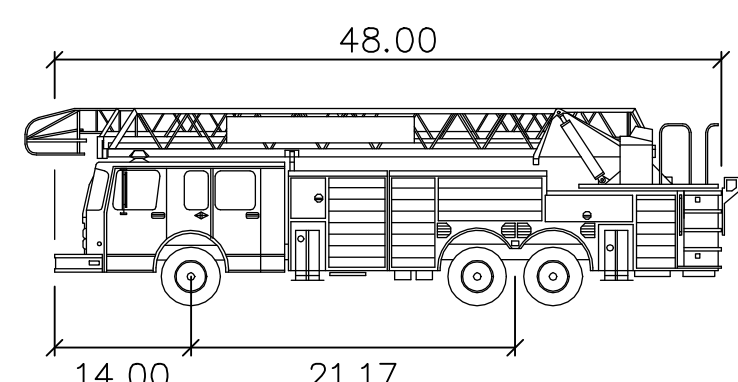
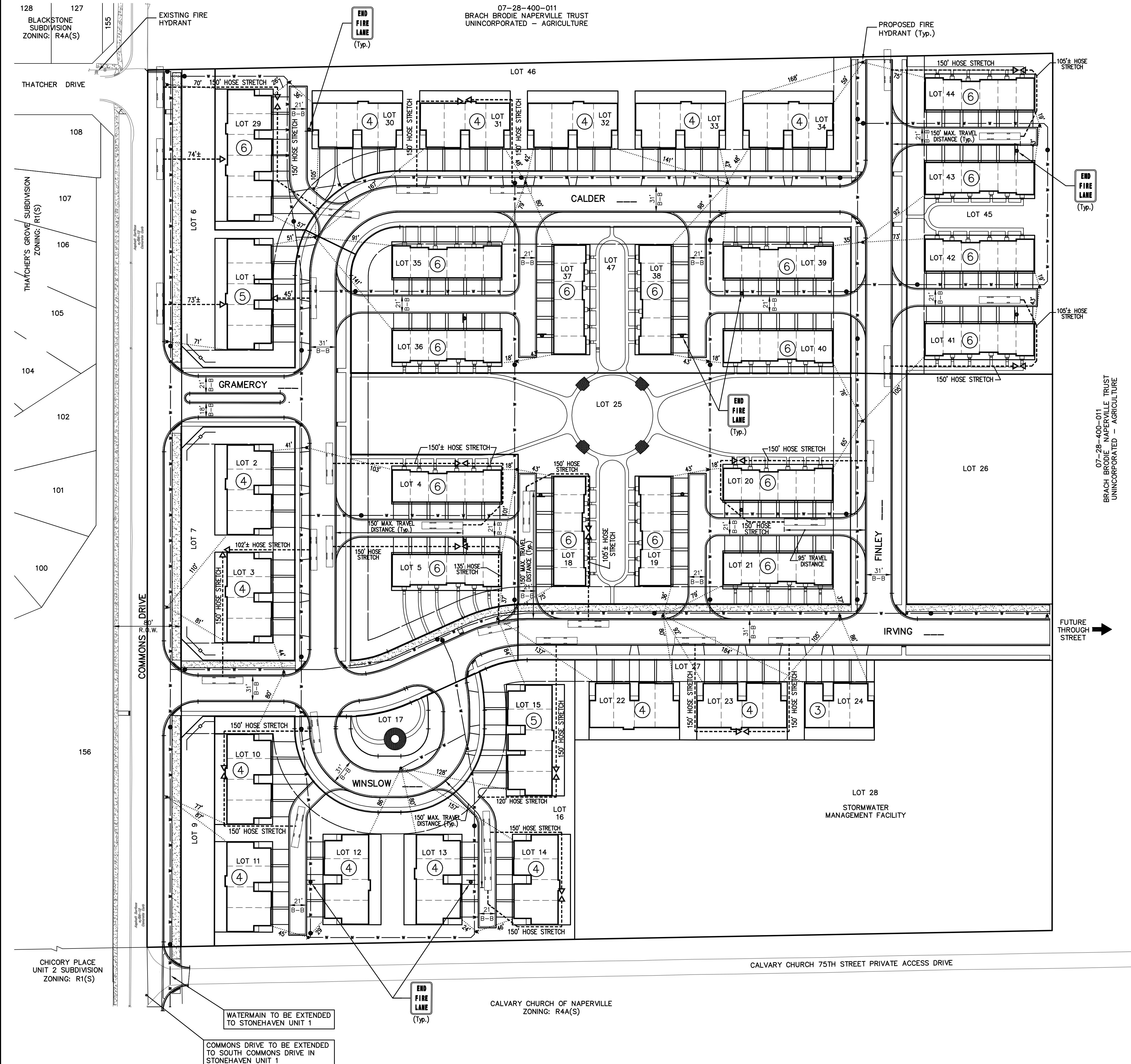
THE SOUTH 1027.50 FEET OF THE WEST 1059.85 FEET OF THE SOUTHEAST QUARTER OF SECTION 28, TOWNSHIP 38 NORTH, RANGE 9 EAST OF THE THIRD PRINCIPAL MERIDIAN, IN DUPAGE COUNTY, ILLINOIS.



60 30 0 60
SCALE: 1 INCH = 60 FEET



LOCATION MAP



FIRETRUCK feet

Width : 8.00

Track : 7.00

Lock to Lock Time : 6.00

Steering Angle : 31.90

FIRE ACCESS PLAN DATA TABLE		
Description	Value	Unit
a) Building Height	Front Load = 30 Rear Load = 36	feet
b) Building Square Footage (typical)	14,000-22,000	square feet
c) Building fire suppression information including any proposed use of sprinkler systems, fire alarm systems, whether fire extinguishers are needed: No Proposed Sprinkler Systems within Development. Buildings will meet or exceed building code requirements for fire alarm systems.		
d) General description of business to be conducted within each building including: will there be rack storage in the building, will there be storage of combustible materials over twelve feet in height, clearance of sprinkler heads and stored materials (18 in. minimum) Residential (Only)		

PREPARED FOR:
M/I HOMES OF CHICAGO, LLC
400 EAST DIEHL ROAD, SUITE 230
NAPERVILLE, ILLINOIS 60563

PREPARED BY:
CEMCON, Ltd.
Consulting Engineers, Land Surveyors & Planners
2280 White Oak Circle, Suite 100
Aurora, Illinois 60502-9675
PH: 630.862.2100 FAX: 630.862.2199
E-Mail: cadd@cemcon.com Website: www.cemcon.com

DISC NO.: 743015 FILE NAME: FIRE ACCESS
DRAWN BY: JGC FLD. BK. / PG. NO.: ---
COMPLETION DATE: 08-22-17 JOB NO.: 743.015
XREF: TOPO PROJECT MANAGER: MAM

REVISIONS		
NO.	DATE	DESCRIPTION
1	09-11-17/JGC	PER CITY REVIEW COMMENTS DATED 8-28-17
2	11-06-17/JGC	REVISED PER NEW LAYOUT
3	01-04-18/JGC	REVISED PER NEW LAYOUT
4	01-09-18/JGC	PER CITY REVIEW COMMENTS
5	03-22-18/JGC	REVISED PROJECT NAME
6	05-01-18/JGC	PER CITY REVIEW COMMENTS DATED 4-20-18

DRAWING PATH: P:\43015\DWG\DWG\DWG\DWG\FIRE_ACCESS.DWG PLOT FILE CREATED: 5/7/2018 BY: JET_CEBULA