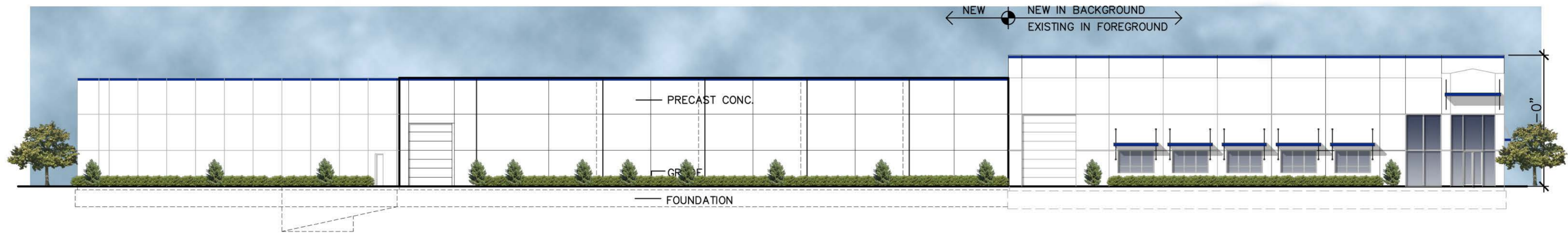
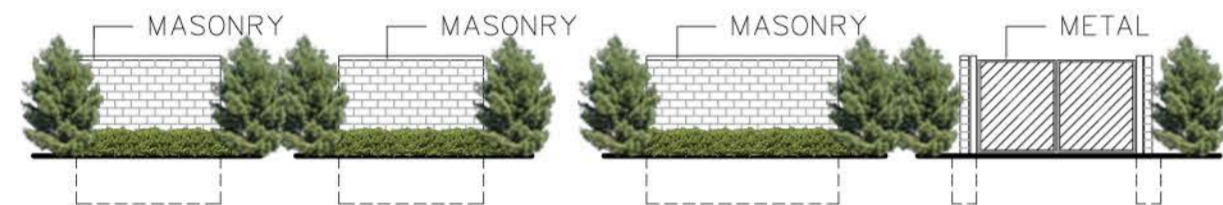


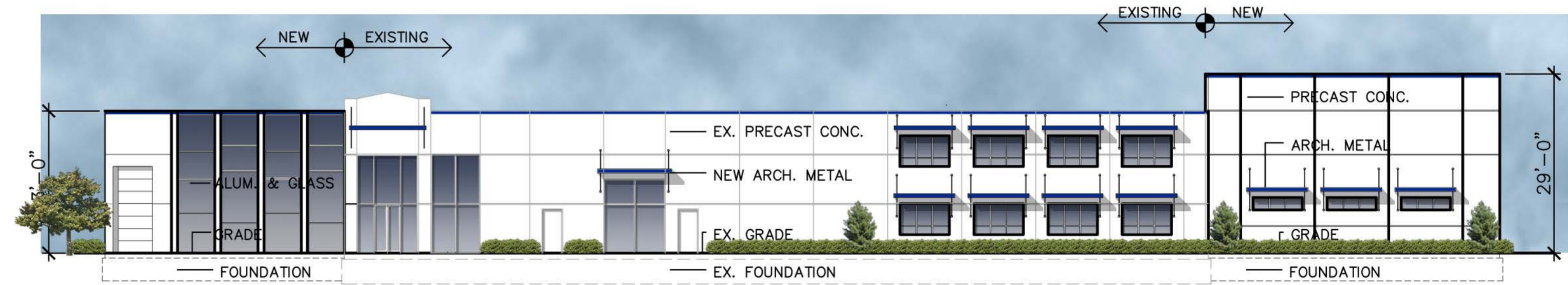
ELEVATIONS



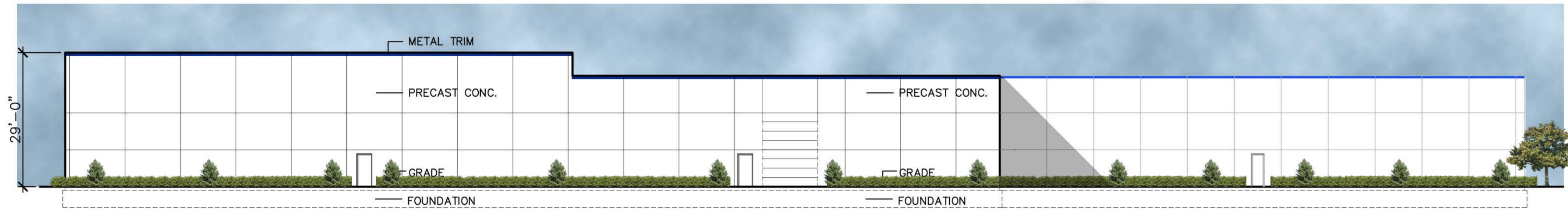
1 NORTH ELEVATION
ELEV SCALE: 1/16"=1'-0"



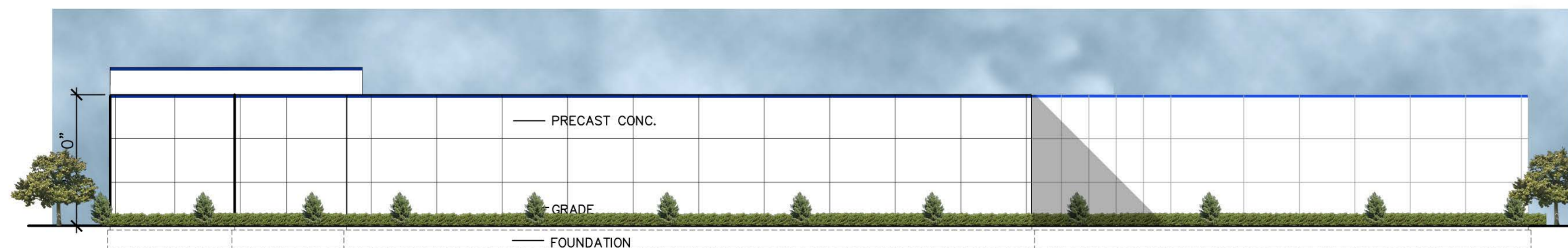
3 TRASH ENCLOSURE
ELEV SCALE: 1"=20'-0"



2 WEST ELEVATION
ELEV SCALE: 1/16"=1'-0"



4 SOUTH ELEVATION
ELEV SCALE: 1/16"=1'-0"



5 EAST ELEVATION
ELEV SCALE: 1/16"=1'-0"

| MATERIALS & FINISHES | | |
|---|--------|------|
| DESCRIPTION | VALUE | UNIT |
| 1. BUILDING HEIGHT | 29'-0" | FEET |
| 2. a. EXISTING FIRST FLOOR OFFICES | 3,655 | SF |
| b. EXISTING FIRST FLOOR WAREHOUSE / INDUSTRIAL | 8,865 | SF |
| c. EXISTING TRUCK DOCK | 1,194 | SF |
| d. NEW FIRST FLOOR OFFICES | 3,902 | SF |
| f. NEW WAREHOUSE / INDUSTRIAL | 41,251 | SF |
| g. NEW TRUCK DOCK | 1,194 | SF |
| h. NEW SECOND FLOOR OFFICES | 2,790 | SF |
| k. CORRIDORS, WASHROOM, ELEVATOR, STAIRS | 2,224 | SF |
| 3. TOTAL AREA - | 65,085 | SF |
| 4. NUMBER OF STORIES - 2 | | |
| 5. EXTERIOR MATERIAL LIST - PRECAST CONCRETE PAINTED TO MATCH | | |

AURORA CORPORATE CENTER
DEVELOPMENT COMPANY
2228 FERRY ROAD
NAPERVILLE, ILLINOIS

GRIPPLE EXPANSION
1611 EMILY LANE
AURORA, ILLINOIS

STEVEN W. HANSEN
ARCHITECT
43W752 US HWY 30
SUGAR GROVE, IL
630.466.8021 - 60554

| # | DATE | DESCRIPTION |
|---|-----------|---------------|
| 1 | 8-26-2019 | DST SUBMITTAL |

PROJECT NO. 18-1611

A3.0