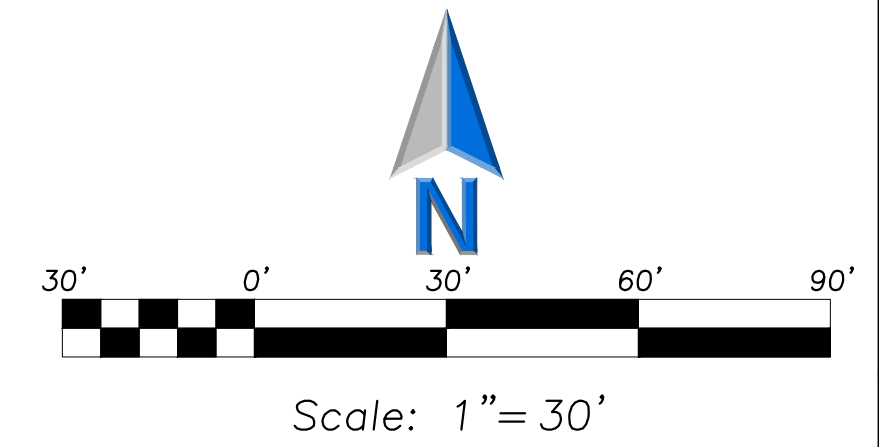


# LAS ROSAS LANDSCAPE PLAN



LAS ROSAS

550 SECOND AVENUE  
AURORA, IL 60505

**WJW**  
Architects

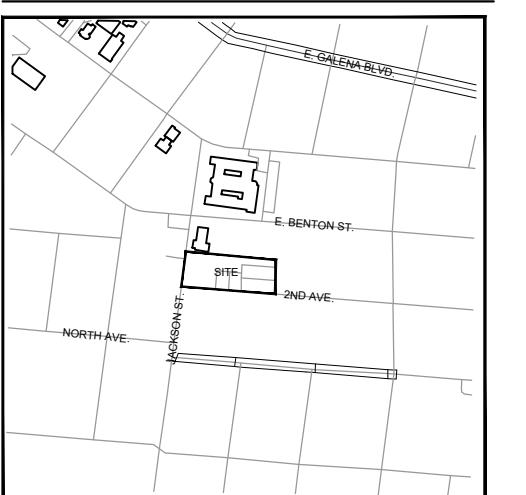
401 W. Superior St., Suite 400 Chicago, IL 60654  
312-642-5567 www.wjwarchitects.com

CONSULTANT INFORMATION:

**ERIKSSON**  
**ENGINEERING**  
**ASSOCIATES, LTD.**

145 COMMERCE DRIVE, SUITE A  
GRAYSLAKE, ILLINOIS 60030  
PHONE: (847) 223-4804  
FAX: (847) 223-4864  
EMAIL: INFO@EEA-LTD.COM

LOCATION MAP



| NO. | ISSUED FOR               | DATE     |
|-----|--------------------------|----------|
| 1.0 | ZONING INITIAL SUBMITTAL | 10/31/24 |
| 1.2 | FINAL ZONING SUBMITTAL   | 12/13/24 |
| 1.3 | FINAL ZONING SUBMITTAL   | 01/15/25 |

PROFESSIONAL DESIGN FIRM REGISTRATION #184.002955  
©2024 WJW ARCHITECTS

STAMP



EXPIRATION DATE: 08/31/2025

SHEET NAME

**Landscape Plan**

PROJECT NUMBER

**21913**

DRAWN BY

**SSG**

CHECKED BY

**PD**

SHEET NUMBER

**L1.0**

PLANT SCHEDULE

| SYMBOL                  | CODE    | BOTANICAL / COMMON NAME  | COND. | SIZE      | QTY |
|-------------------------|---------|--|-------|-----------|-----|
| <b>CANOPY TREES</b>     |         |  |       |           |     |
|                         | CEL OCC | CELTIS OCCIDENTALIS / COMMON HACKBERRY                           | B & B | 2.5" CAL. | 2   |
|                         | TIL RED | TILIA AMERICANA 'REDMOND' / REDMOND AMERICAN LINDEN              | B & B | 2.5" CAL. | 1   |
|                         | ULM ACC | ULMUS X 'ACCOLADE' / ACCOLADE ELM                                | B & B | 2.5" CAL. | 3   |
| <b>UNDERSTORY TREES</b> |         |  |       |           |     |
|                         | ACE MTN | ACER MIYABEI 'MORTON' / STATE STREET™ MIYABE MAPLE               | B & B | 2.5" CAL. | 5   |
|                         | CAR AME | CARPINUS CAROLINIANA / AMERICAN HORNBEAM                         | B & B | 2.5" CAL. | 5   |
|                         | SYR IVO | SYRINGA RETICULATA 'IVORY SILK' / IVORY SILK JAPANESE TREE LILAC | B & B | 2.5" CAL. | 1   |

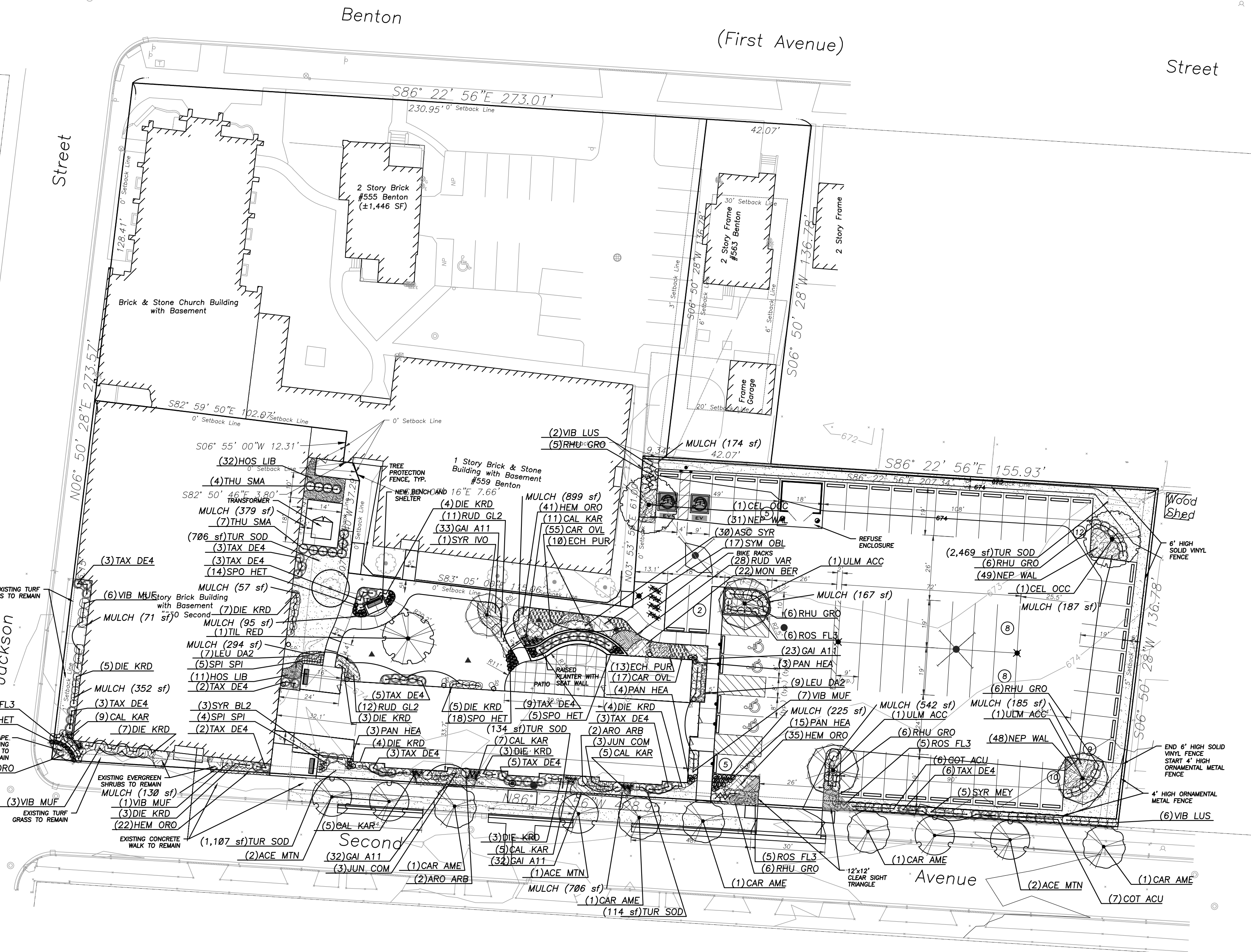
| SYMBOL                  | CODE    | BOTANICAL / COMMON NAME  | COND. | SIZE       | QTY |
|-------------------------|---------|--|-------|------------|-----|
| <b>DECIDUOUS SHRUBS</b> |         |  |       |            |     |
|                         | ARO ARB | ARONIA ARBUTIFOLIA / RED CHOKEBERRY                                  | B & B | 30" HT.    | 4   |
|                         | COT ACU | COTONEASTER ACUTIFOLIUS / PEKING COTONEASTER                         | B & B | 36" HT.    | 13  |
|                         | DIE KR2 | DIERVILLA X 'G2XB85411' / KODIAK® RED DIERVILLA                      | CONT. | 30" HT.    | 48  |
|                         | RHU GRO | RHUS AROMATICA 'GRO-LOW' / GRO-LOW FRAGRANT SUMAC                    | CONT. | 24" HT.    | 35  |
|                         | ROS FL3 | ROSA X 'FLOWER CARPET CORAL' / ROSE                                  | CONT. | 24" SPREAD | 25  |
|                         | SPI SPI | SPIRAEA JAPONICA 'LITTLE PRINCESS' / LITTLE PRINCESS JAPANESE SPIREA | CONT. | 24" HT.    | 9   |
|                         | SYR MEY | SYRINGA MEYERI 'PALIBIN' / DWARF KOREAN LILAC                        | B & B | 30" HT.    | 5   |
|                         | SYR BL2 | SYRINGA X 'BLOOMERANG' / BLOOMERANG LILAC                            | B & B | 30" HT.    | 3   |
|                         | VIB MUF | VIBURNUM DENTATUM 'BLUE MUFFIN' / SOUTHERN ARROWWOOD                 | B & B | 30" HT.    | 17  |
|                         | VIB LUS | VIBURNUM DENTATUM 'CHICAGO LUSTER' / CHICAGO LUSTER ARROWWOOD        | B & B | 36" HT.    | 8   |
| <b>EVERGREEN SHRUBS</b> |         |  |       |            |     |
|                         | JUN COM | JUNIPERUS CHINENSIS 'PFITZERIANA COMPACTA' / COMPACTA PFITZER        | B & B | 24" HT.    | 6   |
|                         | TAX DE4 | TAXUS X MEDIA / DENSE YEW  | B & B | 30" HT.    | 47  |
|                         | THU SMA | THUJA OCCIDENTALIS 'SMARAGD' / EMERALD GREEN ARBORVITAE              | B & B | 48" HT.    | 11  |
| <b>GRASSES</b>          |         |  |       |            |     |
|                         | CAL KAR | CALAMAGROSTIS X ACUTIFLORA 'KARL FOERSTER' / FEATHER REED GRASS      | CONT. | #1         | 42  |
|                         | PAN HEA | PANICUM VIRGATUM 'HEAVY METAL' / HEAVY METAL SWITCH GRASS            | CONT. | #1         | 25  |
|                         | SPO HET | SPOROBOLUS HETEROLEPIS / PRAIRIE DROPSEED                            | CONT. | #1         | 45  |

| SYMBOL             | CODE    | BOTANICAL / COMMON NAME                                | COND. | SIZE | QTY      |
|--------------------|---------|--|-------|------|----------|
| <b>PERENNIALS</b>  |         |  |       |      |          |
|                    | GAI A11 | GAILLARDIA X 'ARIZONA SUN' / BLANKET FLOWER            | CONT. | #1   | 120      |
|                    | HEM ORO | HEMEROCALLIS X 'STELLA DE ORO' / STELLA DE ORO DAYLILY | CONT. | #1   | 111      |
|                    | HOS LIB | HOSTA X 'LIBERTY' / PLANTAIN LILY                      | CONT. | #1   | 43       |
|                    | LEU DA2 | LEUCANTHEMUM X SUPERBUM 'DAISY MAY' / SHASTA DAISY     | CONT. | #1   | 16       |
|                    | NEP WAL | NEPETA X FAASSENII 'WALKERS LOW' / WALKERS LOW CATMINT | CONT. | #1   | 128      |
|                    | RUD GL2 | RUDBECKIA FULGIDA 'GLODSTRUM' / BLACK-EYED SUSAN       | CONT. | #1   | 23       |
| <b>RAIN GARDEN</b> |         |  |       |      |          |
|                    | ASC SYR | ASCLEPIAS SYRIACA / COMMON MILKWEED                    | CONT. | #1   | 30       |
|                    | CAR OVL | CAREX BREVIOR / OVAL SEDGE                             | CONT. | #1   | 72       |
|                    | ECH PUR | ECHINACEA PURPUREA / CONEFLOWER                        | CONT. | #1   | 23       |
|                    | MON BER | MONARDA FISTULOSA / BERGAMOT                           | CONT. | #1   | 22       |
|                    | RUD VAR | RUDBECKIA FULGIDA FULGIDA / ORANGE CONEFLOWER          | CONT. | #1   | 28       |
|                    | SYM OBL | SYMPHYOTRICHUM OBLONGIFOLIUM / FALL ASTER              | CONT. | #1   | 17       |
| <b>TURF GRASS</b>  |         |  |       |      |          |
|                    | TUR SOD | TURF SOD / DROUGHT TOLERANT FESCUE BLEND               | SOD   | S.F. | 4,530 SF |

LANDSCAPE DATA:

| Description            | Count |
|------------------------|-------|
| Canopy Trees           | 5     |
| Evergreen Trees        | 0     |
| Understory Trees       | 8     |
| Deciduous Shrubs       | 157   |
| Evergreen Shrubs       | 64    |
| Ornamental Grasses     | 112   |
| Perennials             | 703   |
| Annuals                | 0     |
| Groundcover (S.F.)     | 0     |
| Turf Grass (Seed S.F.) | 0     |
| Turf Grass (Sod S.F.)  | 5,175 |
| Native Prairie (S.F.)  | 0     |
| Native Wetland (S.F.)  | 0     |

| Landscape Data Table: CTEs Provided |                |                     |  |
|-------------------------------------|----------------|---------------------|--|
| CTE Value                           | Count Provided | Total CTEs Provided |  |
| 1                                   | 5              | 5                   |  |
| 1/3                                 | 0              | 0                   |  |
| 1/3                                 | 8              | 3                   |  |
| 1/20                                | 157            | 8                   |  |
| 1/20                                | 64             | 3                   |  |
|                                     | 0              | 0                   |  |
| <b>Total:</b>                       | <b>234</b>     | <b>19</b>           |  |



LANDSCAPE NOTES:

- PLANT QUANTITIES SHOWN IN THE PLANT SCHEDULE ARE FOR CONVENIENCE ONLY. THE CONTRACTOR IS RESPONSIBLE FOR PROVIDING AND INSTALLING ALL MATERIALS SHOWN ON THE PLAN AND SHOULD NOT RELY ON THE PLANT SCHEDULE FOR DETERMINING QUANTITIES.
- ALL PLANT MATERIALS SHALL BE NURSERY GROWN STOCK AND SHALL BE FREE FROM ANY DEFORMITIES, DISEASES OR INSECT DAMAGE. ANY MATERIALS WITH DAMAGED OR CROOKED/DISFIGURED LEADERS, BARK ABRASION, SUNSCALD, INSECT DAMAGE, ETC. ARE NOT ACCEPTABLE AND WILL BE REJECTED. TREES WITH MULTIPLE LEADERS WILL BE REJECTED UNLESS CALLED OUT IN THE PLANT SCHEDULE AS MULTI-STEM. NO PRUNING TO BE DONE AT THE TIME OF INSTALLATION EXCEPT FOR DEAD OR BROKEN LIMBS.
- ALL LANDSCAPE IMPROVEMENTS SHALL MEET MUNICIPALITY REQUIREMENTS AND GUIDELINES, WHICH SHALL BE VERIFIED BY MUNICIPAL AUTHORITIES.
- ALL PLANTING OPERATIONS SHALL BE COMPLETED IN ACCORDANCE WITH STANDARD HORTICULTURAL PRACTICES. THIS MAY INCLUDE, BUT NOT BE LIMITED TO, PROPER PLANTING BED AND TREE PIT PREPARATION, PLANTING MIX, PRUNING, STAKING AND GUYING, WRAPPING, SPRAYING, FERTILIZATION, PLANTING AND ADEQUATE MAINTENANCE OF MATERIALS DURING CONSTRUCTION ACTIVITIES.
- ALL PLANT MATERIALS SHALL BE INSPECTED AND APPROVED BY THE LANDSCAPE ARCHITECT PRIOR TO INSTALLATION. ANY MATERIALS INSTALLED WITHOUT APPROVAL MAY BE REJECTED.
- THE CONTRACTOR SHALL GUARANTEE PLANT MATERIALS FOR A PERIOD OF ONE YEAR FROM DATE OF ACCEPTANCE BY OWNER. THE CONTRACTOR SHALL OUTLINE PROPER MAINTENANCE PROCEDURES TO THE OWNER AT THE TIME OF ACCEPTANCE. DURING THE GUARANTEE PERIOD, DEAD OR DISEASED MATERIALS SHALL BE REPLACED AT NO COST TO THE OWNER. AT THE END OF THE GUARANTEE PERIOD THE CONTRACTOR SHALL OBTAIN FINAL ACCEPTANCE FROM THE OWNER.
- ANY EXISTING TREES TO BE RETAINED SHALL BE PROTECTED FROM SOIL COMPACTION AND OTHER DAMAGES THAT MAY OCCUR DURING CONSTRUCTION ACTIVITIES BY ERECTING FENCING AROUND SUCH MATERIALS AT A DISTANCE OF 8.5' FROM THE TRUNK.
- ALL GRASS, CLUMPS, OTHER VEGETATION, DEBRIS, STONES, ETC., SHALL BE RAKED OR OTHERWISE REMOVED FROM PLANTING AND LAWN AREAS PRIOR TO INITIATION OF INSTALLATION PROCEDURES.
- THE CONTRACTOR SHALL VERIFY THE LOCATIONS OF ALL UNDERGROUND UTILITIES PRIOR TO INITIATING PLANTING OPERATIONS. THE CONTRACTOR SHALL REPAIR / REPLACE AND UTILITY, PAVING, CURBING, ETC., WHICH IS DAMAGED DURING PLANTING OPERATIONS.
- CONTRACTORS MUST VERIFY ALL QUANTITIES AND OBTAIN ALL PROPER PERMITS AND LICENSES FROM THE PROPER AUTHORITIES.
- ALL MATERIAL MUST MEET INDUSTRY STANDARDS AND THE LANDSCAPE ARCHITECT HAS THE RIGHT TO REFUSE ANY POOR MATERIAL OR WORKMANSHIP.
- LANDSCAPE ARCHITECT IS NOT RESPONSIBLE FOR UNSEEN SITE CONDITIONS.
- ALL PLANTINGS SHALL BE SPACED EQUAL DISTANT, BACK FILLED WITH AMENDED SOIL IN A HOLE TWICE THE ROOTBALL DIAMETER, WATERED, FERTILIZED, PRUNED, AND HAVE ALL TAGS AND ROPES REMOVED.
- LAWN AND BED AREAS SHALL BE ROTOTILLED, RAKED OF CLUMPS AND DEBRIS.
- REMOVE ALL DEAD AND DISEASED PLANT MATERIAL FROM SITE AND DISPOSE OF PROPERLY.
- PLANTS TO BE PLANTED SO THAT ROOT FLARE IS AT THE GRADE OF THE AREA WHERE PLANTED. NO PRUNING TO BE DONE AT THE TIME OF INSTALLATION EXCEPT TO REMOVE DEAD OR BROKEN LIMBS.