

Cherry Hill Lake Work Plan
2016 Maintenance Activities



Cherry Hill Lake:
Area in Yellow to be Serviced = 12.0 Acres



ORCHARD ROAD

8.4 ac

ORCHARD LAKE NORTH

2.0 ac

ORCHARD LAKE SOUTH

Work Area (10.4 ac)

GALENA BLVD

NORTH

LOC
ORC

P
ES

City of Aurora
Engineering Division
March 2016

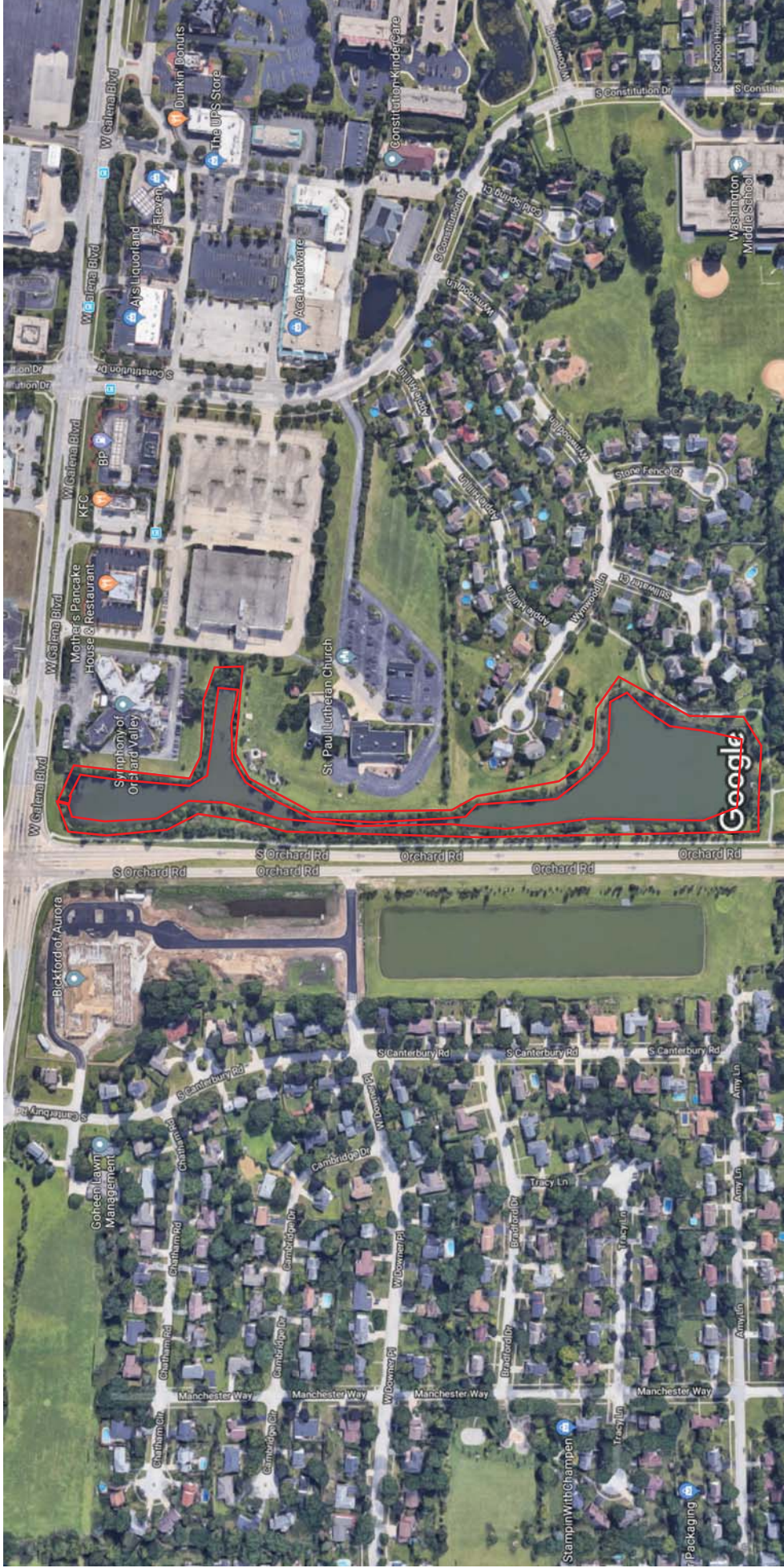
Greenfield Lake: Approximately 2.0 acres



Imagery ©2017 Google, Map data ©2017 Google United States 100 ft

SEC of Orchard and Galena

Approximately 3.5 Acres



Imagery ©2018 Google, Map data ©2018 Google 200 ft

Indian Trail and Farnsworth: Approximately 1.3 acres



Imagery ©2018 Google, Map data ©2018 Google 20 ft

Approximately 10.1 acres

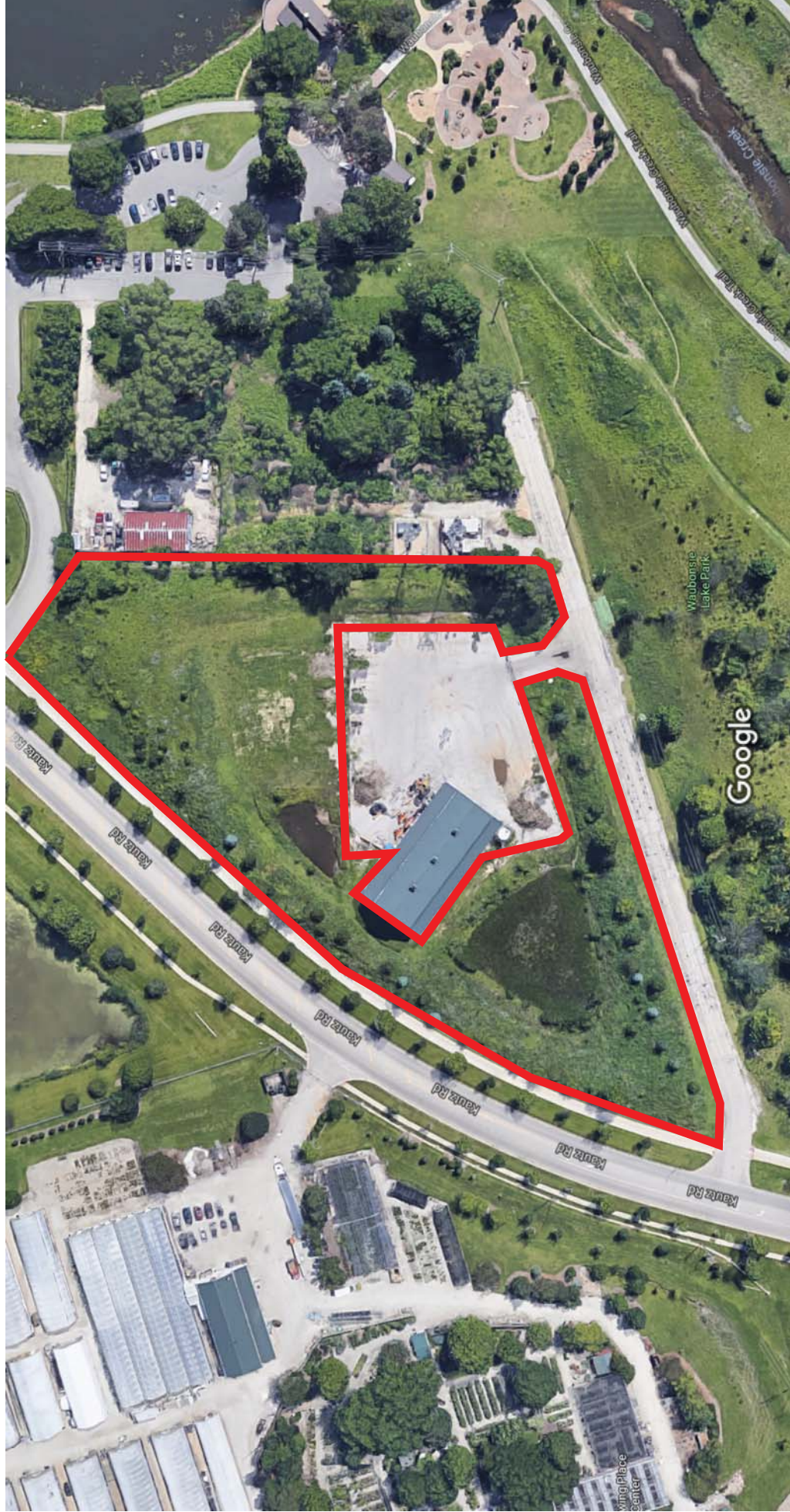
Aurora Police Department



Imagery ©2018 Google, Map data ©2018 Google 100 ft

Kautz and Montgomery

Approximately 2.7 acres



Imagery ©2018 Google, Map data ©2018 Google 50 ft

Riverwalk @ E New York: Approximately 0.5 acres



Imagery ©2018 Google, Map data ©2018 Google 20 ft