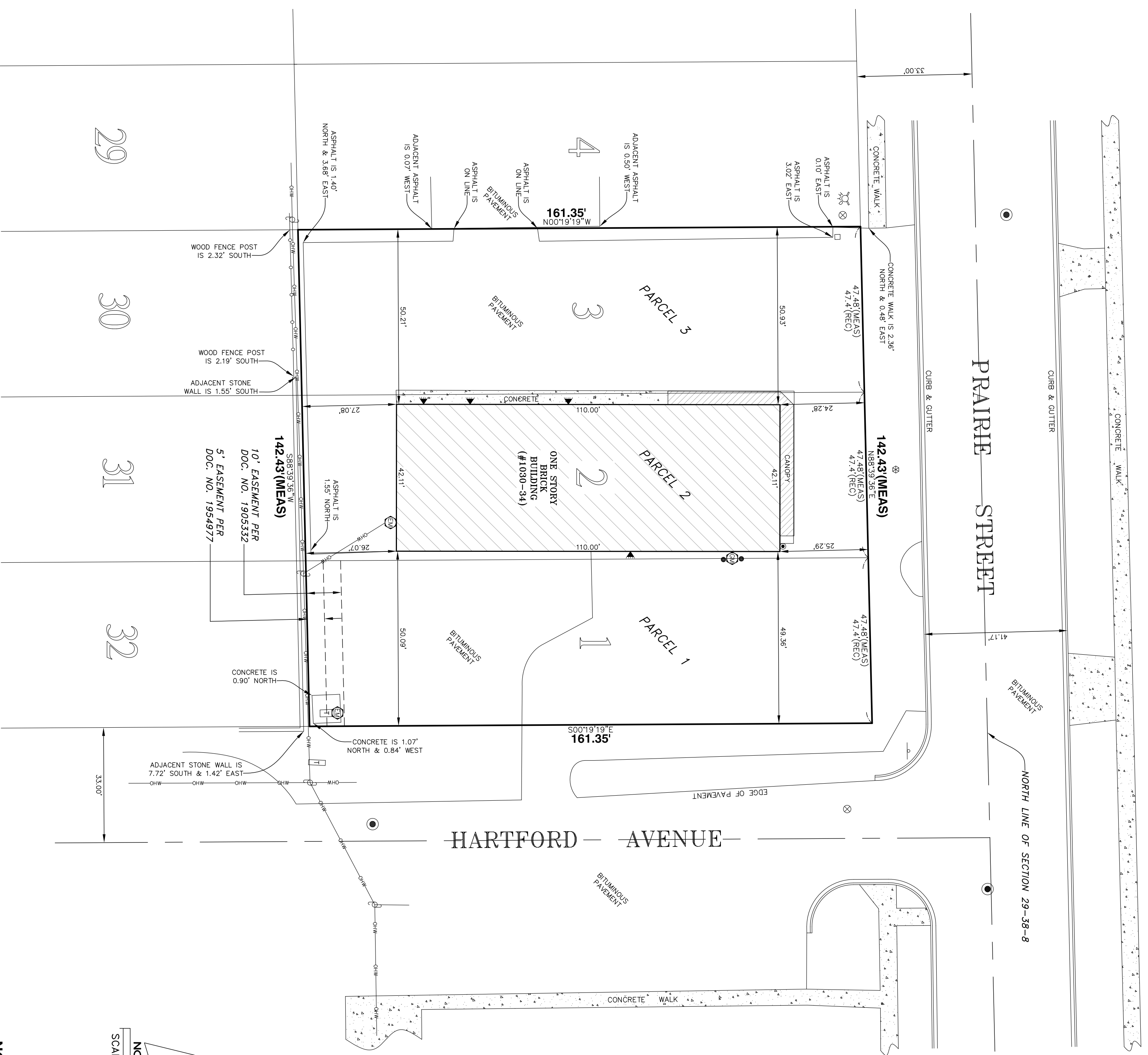


A.L.T.A. / A.C.S.M. LAND TITLE SURVEY

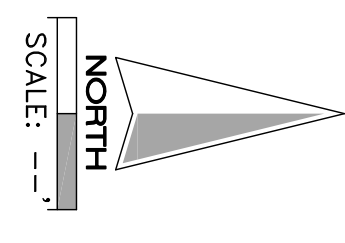
OF

PARCEL 1: LOT 1 IN BLOCK 6 OF HERCULES PARK ADDITION TO AURORA, IN THE CITY OF AURORA, KANE COUNTY, ILLINOIS.
PARCEL 2: LOT 2 IN BLOCK 6 OF HERCULES PARK ADDITION TO AURORA, IN THE CITY OF AURORA, KANE COUNTY, ILLINOIS.
PARCEL 3: LOT 3 IN BLOCK 6 OF HERCULES PARK ADDITION TO AURORA, IN THE CITY OF AURORA, KANE COUNTY, ILLINOIS.



HARTFORD AVENUE

PRAIRIE STREET

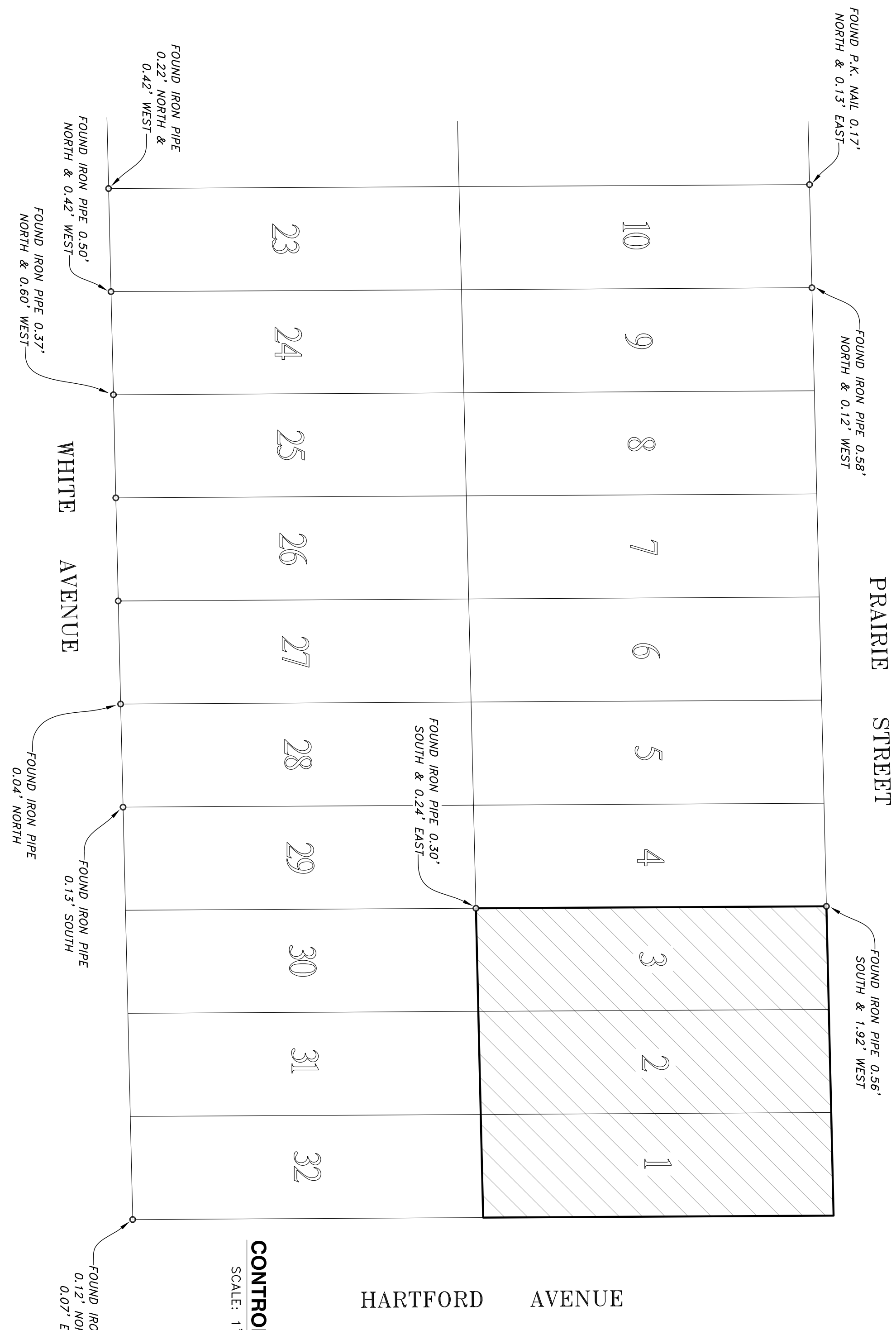


NOTES

1. ANY UTILITIES SHOWN ARE LOCATED BY PHYSICAL EVIDENCE. FOR ACCURATE LOCATIONS FIELD EXCAVATE AND VERIFY.
2. ANY DISCREPANCIES DISCOVERED UPON THE GROUND SHOULD BE PROMPTLY REPORTED TO THE SURVEYOR FOR EXPLANATION OR CORRECTION.
3. REGARDING MATTERS OF RECORD WE HAVE RELIED UPON CHICAGO TITLE INSURANCE COMPANY'S COMMITMENT NUMBER 15WSA370046AU, DATED MARCH 10, 2015.
4. BASIS OF BEARINGS, SOUTH LINE OF PRAIRIE AVENUE AS SHOWN: N88°39'38"E (ASSUMED).
5. FENCE LOCATIONS ARE MADE TO CENTER OF POST.

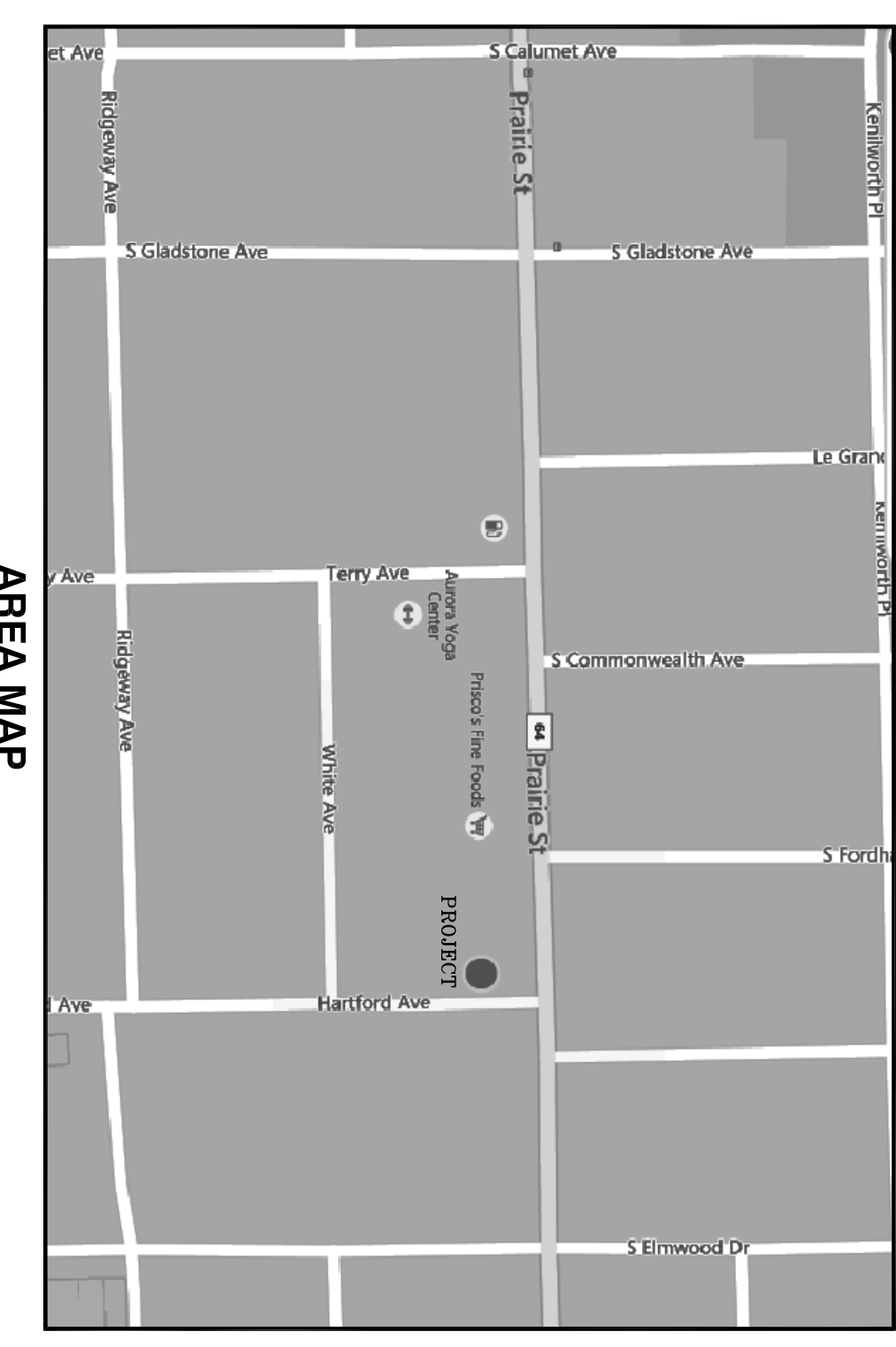
SITE INFORMATION
 LOT AREA = 22,977 SQ. FT.
 BUILDING FOOTPRINT AREA = 4,632 SF/20%

PREPARED FOR: MICHAEL POULAKIDAS
 JOB ADDRESS: 1030-1034 PRAIRIE ST., AURORA, IL.
 JOB NO.: 15-05-0142
 DRAWN BY: KAB
NEKOLA SURVEY, INC.
 PROFESSIONAL LAND SURVEYING SERVICES
 WWW.NEKOLASURVEY.COM
 400 N. SCHMIDT RD., STE. 203
 BOLLINGBROOK, ILLINOIS 60440
 (630) 226-1530 PHONE (630) 226-1430 FAX



CONTROL MAP
 SCALE: 1"=40'

SYMBOL LEGEND			
⊙	CATCHBASIN	⊠	QUADRAIL
●	MANHOLE	—(—	HEADWALL
●	STORM MANHOLE	— —	END SECTION
●	WATER VALVE	⊠	PHONE
⊙	HYDRANT	— —	OVERHEAD WIRES
⊙	VALVE & VAULT	— —	DEPRESSED CURB
⊙	GAS VALVE	⊠	BUFFALO BOX
⊙	UTILITY POLE W/ GUY	⊠	TELEPHONE MANHOLE
⊙	UTILITY POLE	⊠	ELECTRIC MANHOLE
⊙	STREET SIGN	⊙	DOWNSPOUT
⊙	STREET LIGHT	⊙	DRAIN TILE
⊙	DOORWAY	⊙	SIGNAL CONTROL BOX
⊙	TRAFFIC SIGNAL	⊙	VENT
⊙	HANDHOLE	⊙	UTILITY PIPE
⊙	TELEPHONE CANISTER	⊙	GAS METER
⊙	COK. ED. CANISTER	⊙	ELECTRIC METER
⊙	CABLE CANISTER/BOX	⊙	WATER METER
⊙	TRANSFORMER	⊙	BORING LOCATION
⊙	WATERMAIN STUB	⊙	LIGHT
⊙	SANITARY SEWER STUB	⊙	STREET LIGHT
⊙	STORM SEWER STUB	⊙	STAND PIPE
⊙	ELECTRIC OUTLET	(XX)	RECORD
⊙	TELEPHONE BOX	(M)	MEASURED
⊙		(I)	DEEDED



AREA MAP

STATE OF ILLINOIS, ss
 COUNTY OF WILL, ss
 TO CHICAGO TITLE INSURANCE COMPANY, DANSU REAL ESTATE, LLC AND MICHAEL POULAKIDAS, THIS IS TO CERTIFY THAT THIS MAP OR PLAT AND THE SURVEY ON WHICH IT IS BASED WERE MADE IN ACCORDANCE WITH THE 2011 MINIMUM STANDARD DETAILED REQUIREMENTS FOR ALTA/ACSM LAND TITLE SURVEYS, JOINTLY ESTABLISHED AND ADOPTED BY ALTA AND NSPS, AND THAT THE SURVEYOR HAS COMPLETED THE FIELD WORK AND HAS COMPLETED ON THE 15TH DAY OF JUNE, 2015.
 DATE OF PLAT OR MAP: 17TH DAY OF JUNE, 2015.