

Preliminary Landscape Plan

PRAIRIE MEADOWS

Aurora, Illinois

November 29, 2023

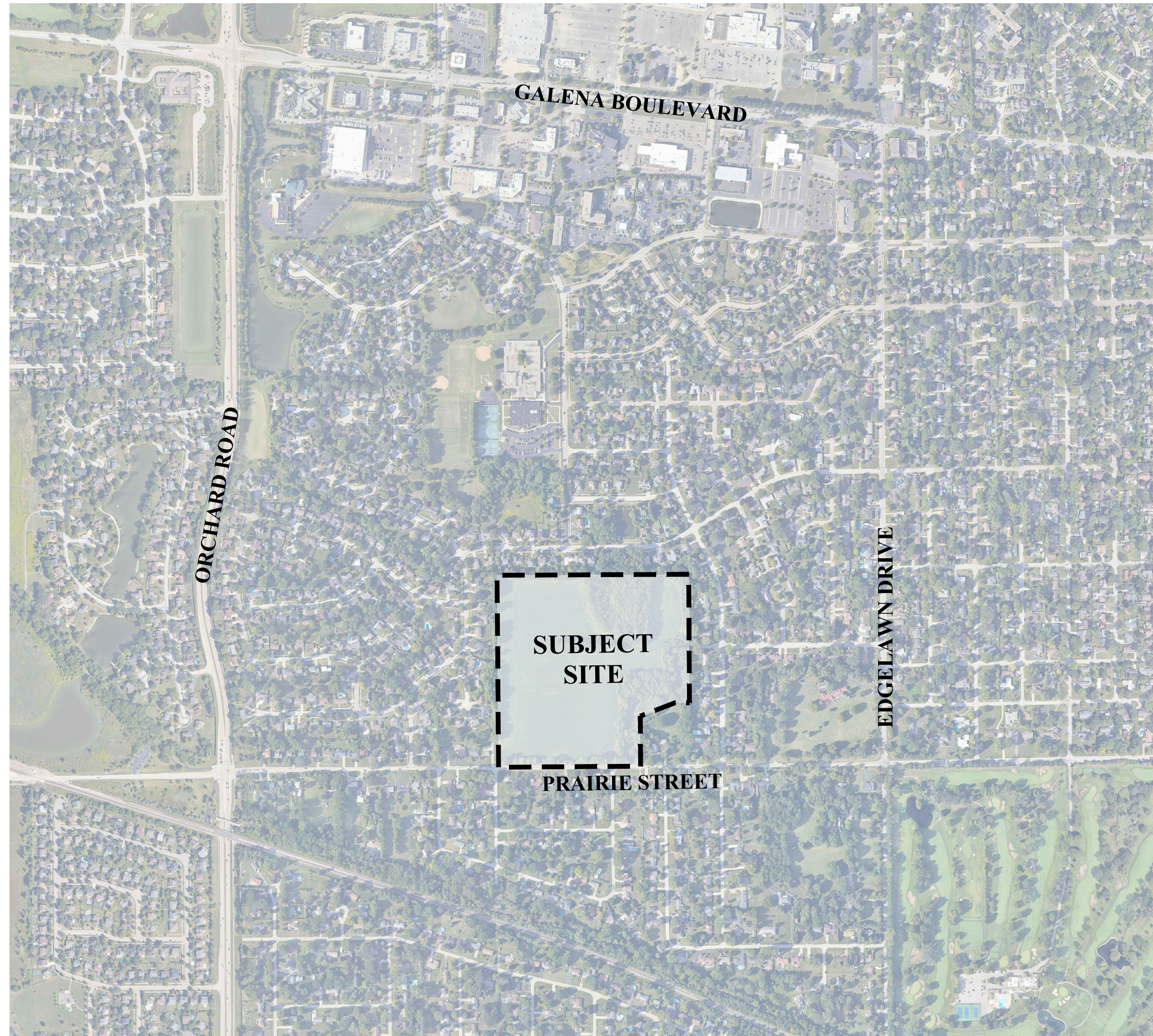
CONSULTANTS:



LANDSCAPE ARCHITECT:
GARY R. WEBER ASSOCIATES, INC
402 WEST LIBERTY DRIVE
WHEATON, ILLINOIS 60187



CIVIL ENGINEER:
CEMCON, Ltd.
CONSULTING ENGINEERS, LAND SURVEYORS & PLANNERS
2280 WHITE OAK CIRCLE, SUITE 100
AURORA, IL 60502



LOCATION MAP

SCALE: 1"=600'

INDEX OF SHEETS

SHEET NO.	DESCRIPTION
L1.0	COVER SHEET
L1.1	OVERALL PRELIMINARY LANDSCAPE PLAN
L1.2	PRELIMINARY LANDSCAPE PLAN
L1.3	PRELIMINARY LANDSCAPE PLAN

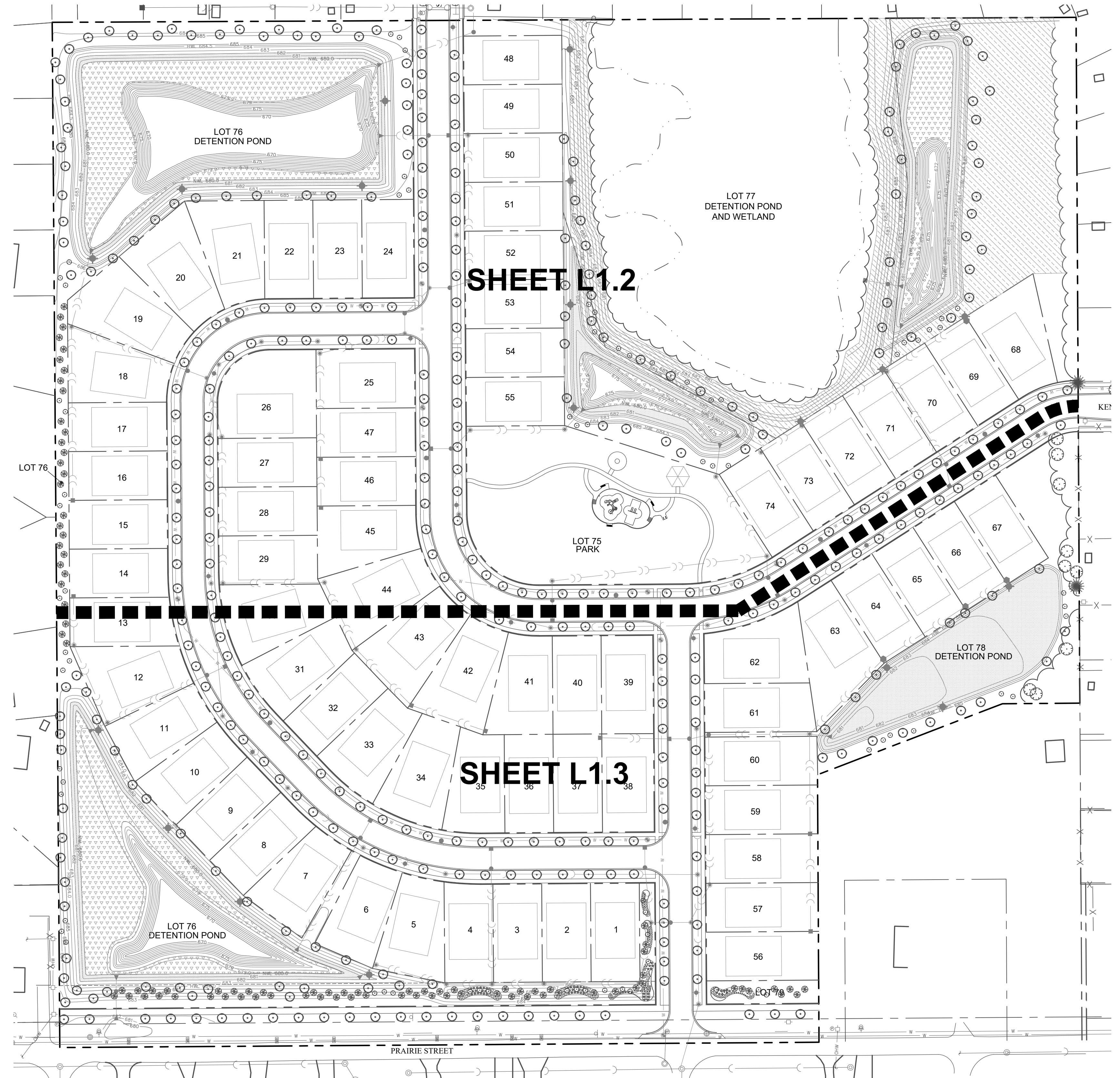
LENNAR[®]

REPRESENTATIVE PLANT LIST

Symbol	Description	Unit / Size	Remarks
+	a) Canopy Trees		
	Acer freemanii 'Marmo'	Percent of Canopy Trees	
	MARMO FREEMAN MAPLE	2.5" Cal	Caliper at Installation (inches)
	Acer rubra 'Morton'	Percent of Canopy Trees	
	STATE STREET MAPLE	2.5" Cal	Caliper at Installation (inches)
	Acer saccharum 'Green Mountain'	Percent of Canopy Trees	
	GREEN MOUNTAIN STRAW MAPLE	2.5" Cal	Caliper at Installation (inches)
	Celtis occidentalis	Percent of Canopy Trees	
	COMMON HACKBERRY	2.5" Cal	Caliper at Installation (inches)
	Celtis occidentalis 'Windy City'	Percent of Canopy Trees	
	WINDY CITY HACKBERRY	2.5" Cal	Caliper at Installation (inches)
	Gleditsia triacanthos v. inermis 'Sky line'	Percent of Canopy Trees	
	SKYLINE HORNET LOCUST	2.5" Cal	Caliper at Installation (inches)
	Gymnocladia dioica 'Vaporosa-RF'	Percent of Canopy Trees	
	ESPRESSO KENTUCKY COFFEE TREE	2.5" Cal	Caliper at Installation (inches)
	Liquidambar styraciflua 'Mortoni'	Percent of Canopy Trees	
	TULIPTREE	2.5" Cal	Caliper at Installation (inches)
	Liquidambar styraciflua 'Mortoni'	Percent of Canopy Trees	
	MORANE SWEETGUM	2.5" Cal	Caliper at Installation (inches)
	Platanus acerifolia 'Mortoni Circle'	Percent of Canopy Trees	
	EXCLAMATION LONDON PLANETREE	2.5" Cal	Caliper at Installation (inches)
	Quercus bicolor	Percent of Canopy Trees	
	SWAMP WHITE OAK	2.5" Cal	Caliper at Installation (inches)
	Quercus imbricaria	Percent of Canopy Trees	
	SHINGLE OAK	2.5" Cal	Caliper at Installation (inches)
Quercus rubra	Percent of Canopy Trees		
NORTHERN RED OAK	2.5" Cal	Caliper at Installation (inches)	
Robinia pseudoacacia 'Vigoro Blue'	Percent of Canopy Trees		
CHICAGO BLUE LOCUST	2.5" Cal	Caliper at Installation (inches)	
Tilia americana 'Sentry'	Percent of Canopy Trees		
AMERICAN SENTRY LINDBERGH	2.5" Cal	Caliper at Installation (inches)	
Tilia cordata 'Greenspire'	Percent of Canopy Trees		
GREEN SPIRE LITTLE LEAF LINDBERGH	2.5" Cal	Caliper at Installation (inches)	
Tilia tomentosa 'Sterling'	Percent of Canopy Trees		
STERLING SILVER LINDBERGH	2.5" Cal	Caliper at Installation (inches)	
Ulmus campestris 'New Horizon'	Percent of Canopy Trees		
NEW HORIZON SMOOTH LEAF ELM	2.5" Cal	Caliper at Installation (inches)	
Ulmus 'Morton'	Percent of Canopy Trees		
ACCOLADE ELM	2.5" Cal	Caliper at Installation (inches)	
+	b) Evergreen Trees		
	Abies concolor	Percent of Evergreen Trees	
	WHITE FIR	6'	Height at Installation (feet)
	Abies balsam	Percent of Evergreen Trees	
	FRASER FIR	6'	Height at Installation (feet)
	Juniperus virginiana	Percent of Evergreen Trees	
	EASTERN RED CEDAR	6'	Height at Installation (feet)
	Picea abies	Percent of Evergreen Trees	
	NORWAY SPRUCE	6'	Height at Installation (feet)
	Picea glauca 'Demaris'	Percent of Evergreen Trees	
	BLACK HILLS SPRUCE	6'	Height at Installation (feet)
	Picea omorika	Percent of Evergreen Trees	
	SIRHAN SPRUCE	6'	Height at Installation (feet)
	Picea pungens	Percent of Evergreen Trees	
	GREEN COLORADO SPRUCE	6'	Height at Installation (feet)
	Picea pungens 'Vander'	Percent of Evergreen Trees	
	BLUE COLORADO SPRUCE	6'	Height at Installation (feet)
	Pinus flexilis	Percent of Evergreen Trees	
	LIMBER PINE	6'	Height at Installation (feet)
	Pinus strobus	Percent of Evergreen Trees	
	WHITE PINE	6'	Height at Installation (feet)
	Pseudotsuga mucronata	Percent of Evergreen Trees	
	DOUGLASS FIR	6'	Height at Installation (feet)
	Thuja occidentalis 'Dark Green'	Percent of Evergreen Trees	
	DARK GREEN AMERICAN ARBORVITAE	6'	Height at Installation (feet)
+	c) Understory Trees		
	Ameiobacter grandiflora	Percent of Understory Trees	Multi-stem
	APPLE SERVICE BERRY	6'	Multi-Stemmed Height at Installation (feet)
	Ameiobacter laevis	Percent of Understory Trees	Multi-stem
	ALLEGHENY SERVICE BERRY	6'	Multi-Stemmed Height at Installation (feet)
	Betula nigra 'Cully'	Percent of Understory Trees	Multi-stem
	HERITAGE RIVER BIRCH	6'	Multi-Stemmed Height at Installation (feet)
	Betula populifolia 'Whitepire'	Percent of Understory Trees	Multi-stem
	WHITESPIRE GREY BIRCH	6'	Multi-Stemmed Height at Installation (feet)
	Cornus caroliniana	Percent of Understory Trees	Tree Form
	AMERICAN HORSEBAM	2" Cal	Multi-Stemmed Height at Installation (feet)
	Cornus canadensis	Percent of Understory Trees	Multi-stem
	EASTERN REDBUD	6'	Multi-Stemmed Height at Installation (feet)
	Cornus mas	Percent of Understory Trees	Multi-stem
	CORNELIAN CHERRY DOGWOOD	6'	Multi-Stemmed Height at Installation (feet)
	Cataegpa crataegus 'Inermis'	Percent of Understory Trees	Tree Form
	THORNLESS COCKSPUR Hawthorn	2" Cal	Multi-Stemmed Height at Installation (feet)
	Hamelis virginiana	Percent of Understory Trees	Multi-stem
	AMERICAN WITCHHAZEL	6'	Multi-Stemmed Height at Installation (feet)
	Malus 'Purple Prince'	Percent of Understory Trees	Tree Form
	PURPLE PRINCE CRABAPPLE	2" Cal	Multi-Stemmed Height at Installation (feet)
	Malus 'JFS-KWS'	Percent of Understory Trees	Tree Form
	ROYAL RAINBOW CRABAPPLE	2" Cal	Multi-Stemmed Height at Installation (feet)
	Syringa pekinensis 'Morton'	Percent of Understory Trees	Multi-stem
	CHINA SNOW PEKING LILAC	6'	Multi-Stemmed Height at Installation (feet)
+	d) Deciduous Shrubs		
	Cornus sericea 'Lam'	Percent of Deciduous Shrubs	4' O.C.
	RED BIRD DOGWOOD	30"	Height at Installation (inches)
	Hydrangea paniculata 'SMITH Q'	Percent of Deciduous Shrubs	3' O.C.
	LITTLE QUICK FIRE HYDRANGEA	24"	Height at Installation (inches)
	Physocarpus opulifolius 'Diana May'	Percent of Deciduous Shrubs	3' O.C.
	LITTLE RED HYDRANGEA	24"	Height at Installation (inches)
	Physocarpus opulifolius 'Diana 3'	Percent of Deciduous Shrubs	4' O.C.
	LEMON CANDY NINEBARK	30"	Height at Installation (inches)
	Syringa 'SM-SHPT'	Percent of Deciduous Shrubs	3' O.C.
DWARF PURPLE BLOOMERANG LILAC	24"	Height at Installation (inches)	
Weigela florida 'Alexandra'	Percent of Deciduous Shrubs	4' O.C.	
WINE & ROSES WEIGELA	30"	Height at Installation (inches)	
+	e) Evergreen Shrubs		
	Juniperus chinensis 'Kaiba's Compact'	Percent of Evergreen Shrubs	4' O.C.
	KALLAYS COMPACT FITZGER JUNIPER	30"	Width at Installation (inches)
	Juniperus conferta 'Blue Pacific'	Percent of Evergreen Shrubs	3'-6" O.C.
	BLUE PACIFIC JUNIPER	30"	Width at Installation (inches)
Juniperus 'Shamrock'	Percent of Evergreen Shrubs	4' O.C.	
SHAMROCK JUNIPER	30"	Width at Installation (inches)	
Taxus canadensis 'Densiformis'	Percent of Evergreen Shrubs	3' O.C.	
DENSE YEW	24"	Width at Installation (inches)	
+	f) Ornamental Grasses		
	Calamagrostis xacutiflora 'Karl Foerster'	Percent of Ornamental Grasses	30" O.C.
FEATHER REED GRASS	#3	Size - Mature Height = 4'-6"	
+	g) Perennials		
	Allium 'Summer Beauty'	#1	Size
	SUMMER BEAUTY ORNION	#1	Size
	Hemerocallis 'Rosy Returns'	#1	Size
	ROSY RETURNS DAYLILY	#1	Size
Nepeta 'Cat's Pajamas'	#1	Size	
CAT'S PAJAMAS CATMINT	#1	Size	
+	h) Misc. Materials		
	Shredded Hardwood Mulch	C.Y.	
	Sod	S.Y.	
	Low Profile Prairie Seed Mix & Blanket	AC.	
	Wet Meadow Seed Mix & Blanket	AC.	
Emergent Plantings	AC.		
6" Board-On-Board Fence	L.F.		

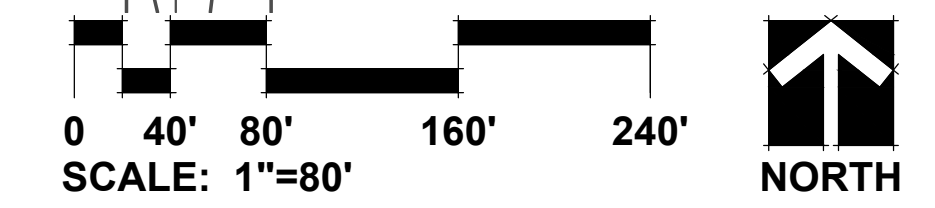
Landscape Data Table: Planting Material Key	
Note: Symbols are blackline for proposed grasscale for existing	
Canopy Trees (minimum size 2.5 caliper) Count:	350
Evergreen Trees (minimum size 6 feet) Count:	89
Understory Trees (minimum size 2.5 caliper or 8 feet if multi-stemmed) Count:	74
Evergreen Shrubs (minimum of 18 inches) Count:	57
Deciduous Shrubs (minimum of 18 inches) Count:	68
Ornamental Grasses Count:	83
Perennials Count:	215
Annuals Count:	0
Groundcover Square Footage:	0
Low Profile Prairie Square Footage:	93,148
Turf Square Footage:	303,570
Wet Meadow Planting Square Footage:	66,605
Emergent Planting Square Footage:	133,717

Standard Requirements		Provided Canopy Trees	Existing Canopy Trees	Provided Evergreen Trees	Provided Understory Trees	Provided Shrubs
Street Trees	Total CTEs Required	201.0	0.0	0.0	0.0	0.0
Wet Stormwater Facility	Total CTEs Provided	290.0	62.0	27.0	52.0	0.0
Total:		491.0	62.0	27.0	52.0	0.0



GENERAL LANDSCAPE NOTES

- Contractor shall verify underground utility lines and is responsible for any damage.
- Contractor shall verify all existing conditions in the field prior to construction and shall notify landscape architect of any variance.
- Material quantities shown are for contractors convenience only. The Contractor must verify all material and supply sufficient materials to complete the job per plan.
- The landscape architect reserves the right to inspect trees and shrubs either at place of growth or at site before planting, for compliance with requirements of variety, size and quality.
- Work shall conform to American Standard for Nursery Stock, State of Illinois Horticultural Standards, and Local Municipal requirements.
- Contractor shall secure and pay for all permits, fees, and inspections necessary for the proper execution of this work and comply with all codes applicable to this work.
- See General Conditions and Specifications for landscape work for additional requirements.



SYMBOL LEGEND

EXISTING	PROPOSED	DESCRIPTION
○	●	MANHOLE
□	■	CATCH BASIN
○	○	INLET
○	○	CLEANOUT
○	○	SLOPE INLET BOX
○	○	HEADWALL
○	○	END SECTION
○	○	STORM SEWER
○	○	SANITARY SEWER
○	○	WATERMAIN
○	○	VALVE & BOX
○	○	WATER VALVE IN VAULT
○	○	FIRE HYDRANT
○	○	CONTOURS
○	○	ELEVATIONS
○	○	STREET LIGHT
○	○	RIP-RAP

GRWA
GARY R. WEBER ASSOCIATES, INC.
 LAND PLANNING
 ECOLOGICAL CONSULTING
 LANDSCAPE ARCHITECTURE
 402 WEST LIBERTY DRIVE
 WHEATON, ILLINOIS 60187
 PHONE: 630-668-7197

CLIENT
LENNAR
 1700 EAST GOLF ROAD, SUITE 1100
 SCHAUMBURG, IL 60173

ENGINEER
CEMCON, LTD.
 2280 WHITE OAK CIRCLE, SUITE 100
 AURORA, IL 60502

PRAIRIE MEADOWS

AURORA, ILLINOIS

OVERALL PRELIMINARY LANDSCAPE PLAN

NO.	DATE	REVISIONS
2	11.29.2023	
1	11.13.2023	

DATE: 10.05.2023
 PROJECT NO.: LN231243
 DRAWN: NKF
 CHECKED: REO
 SHEET NO.: **L1.1**



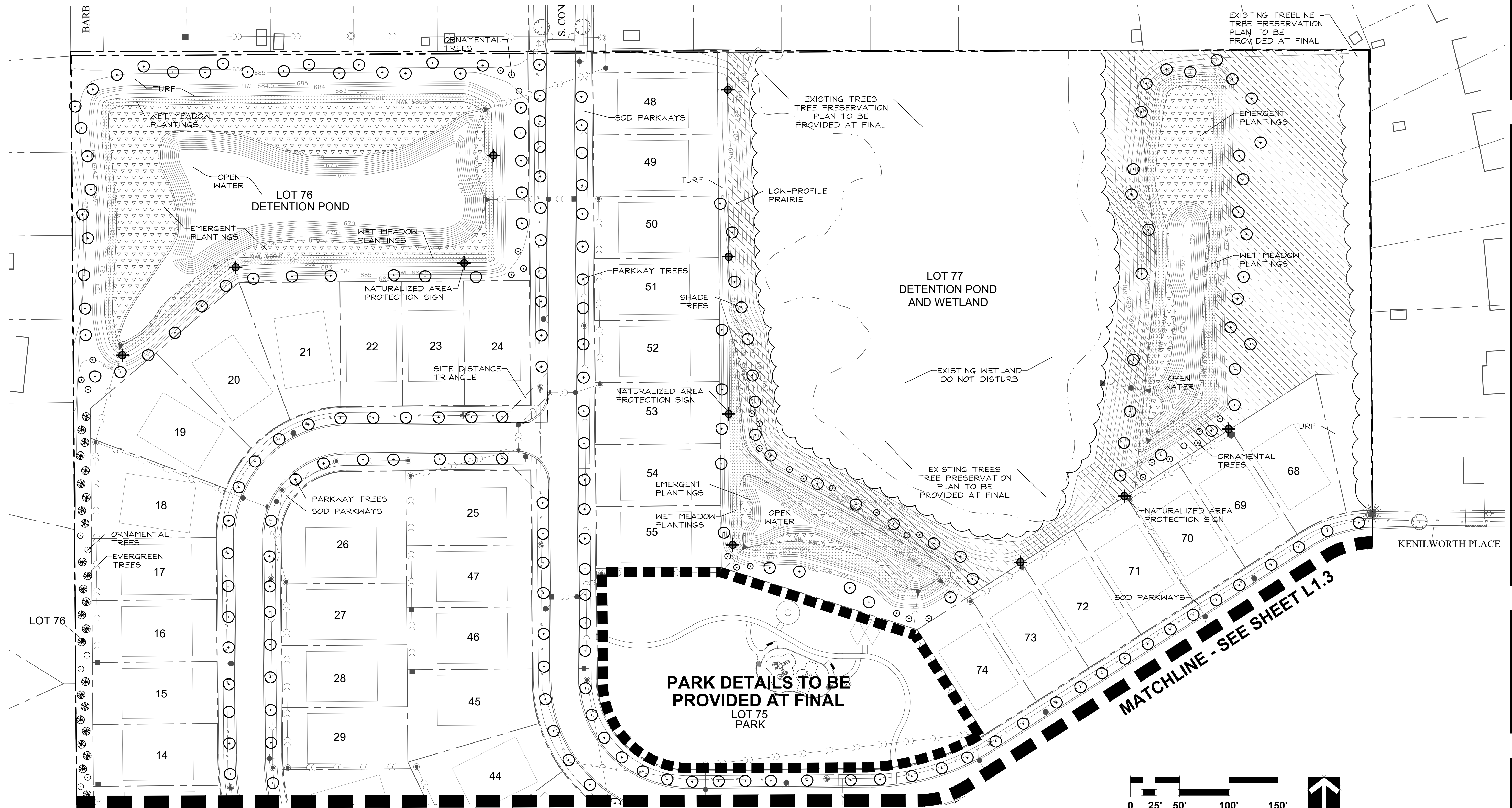
GARY R. WEBER
ASSOCIATES, INC.
LAND PLANNING
ECOLOGICAL CONSULTING
LANDSCAPE ARCHITECTURE
402 WEST LIBERTY DRIVE
WHEATON, ILLINOIS 60187
PHONE: 630-668-7197

CLIENT
LENNAR
1700 EAST GOLF ROAD, SUITE 1100
SCHAUMBURG, IL 60173

ENGINEER
CEMCON, LTD.
2280 WHITE OAK CIRCLE, SUITE 100
AURORA, IL 60502

SYMBOL LEGEND

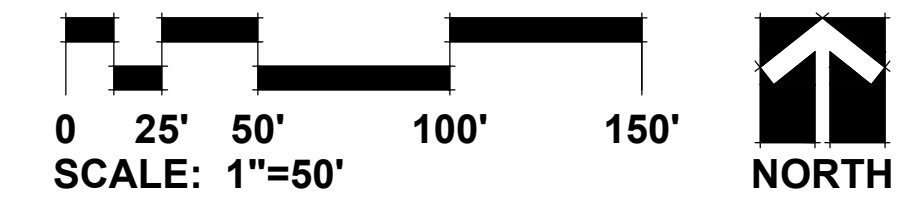
EXISTING	PROPOSED	DESCRIPTION
		MANHOLE
		CATCH BASIN
		INLET
		CLEANOUT
		SLOPE INLET BOX
		HEADWALL
		END SECTION
		STORM SEWER
		SANITARY SEWER
		WATERMAIN
		VALVE & BOX
		WATER VALVE IN VAULT
		FIRE HYDRANT
		CONTOURS
		ELEVATIONS
		STREET LIGHT
		RIP-RAP



PRAIRIE MEADOWS

AURORA, ILLINOIS

PRELIMINARY LANDSCAPE PLAN



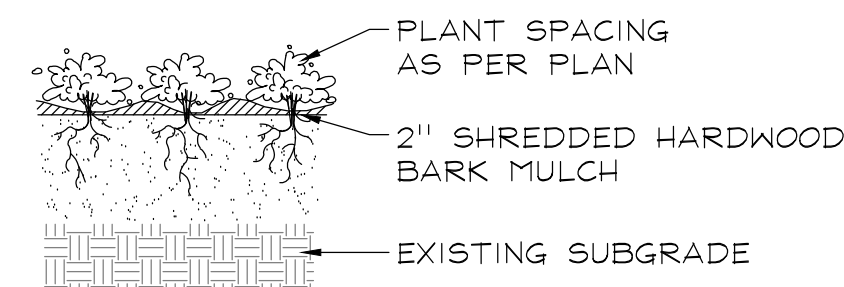
NO.	DATE	REVISIONS
2	11.29.2023	
1	11.13.2023	

DATE 10.05.2023
PROJECT NO. LN23143
DRAWN NKF
CHECKED REO
SHEET NO.

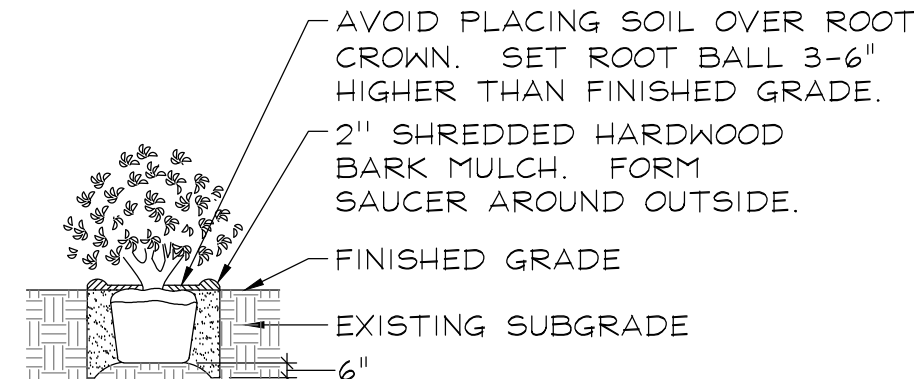
L1.2



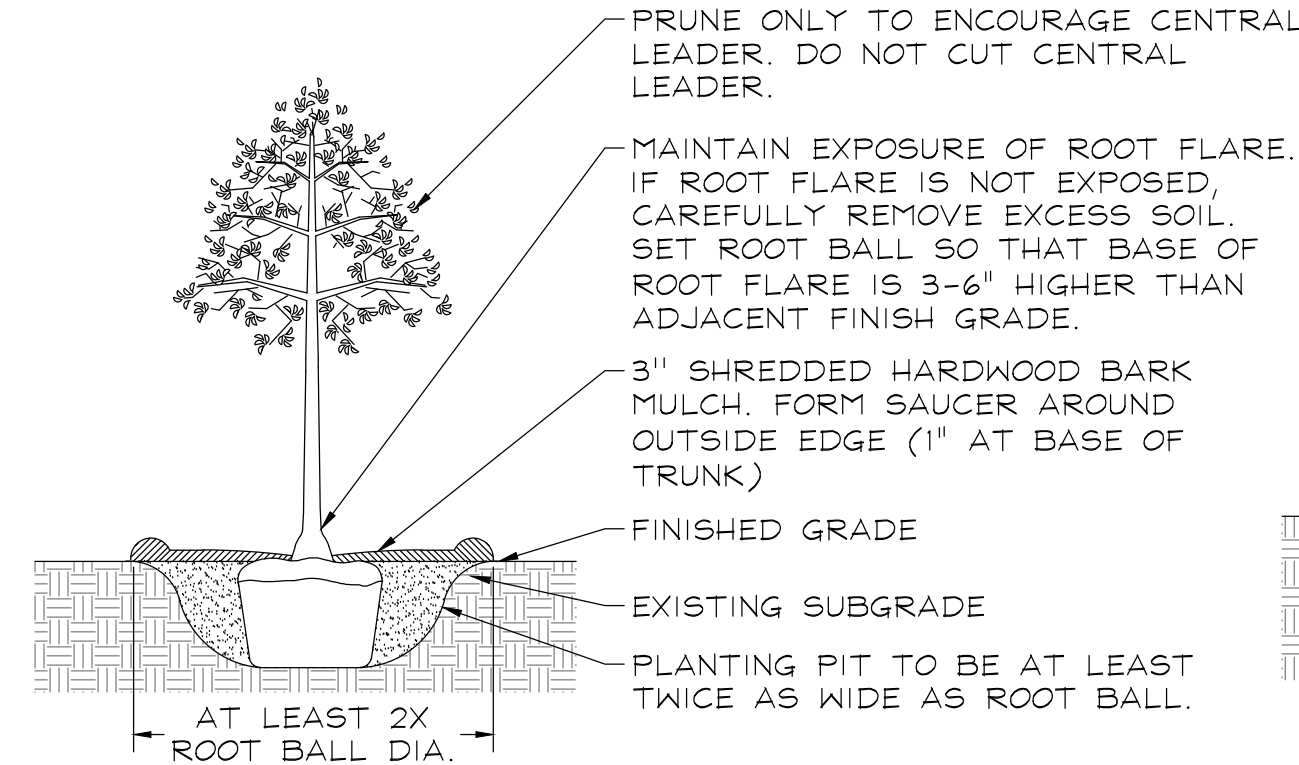
PLANTING DETAILS



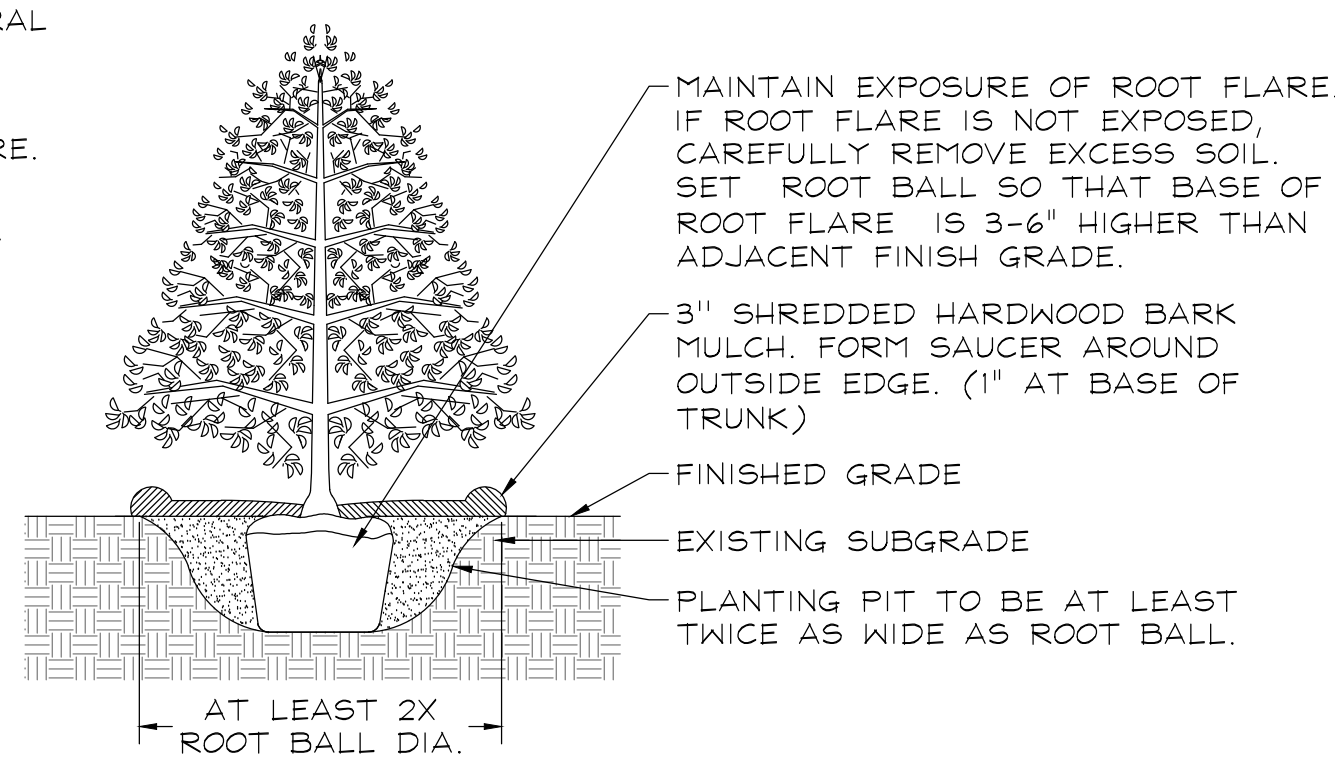
PERENNIALS AND GROUNDCOVERS
NOT TO SCALE



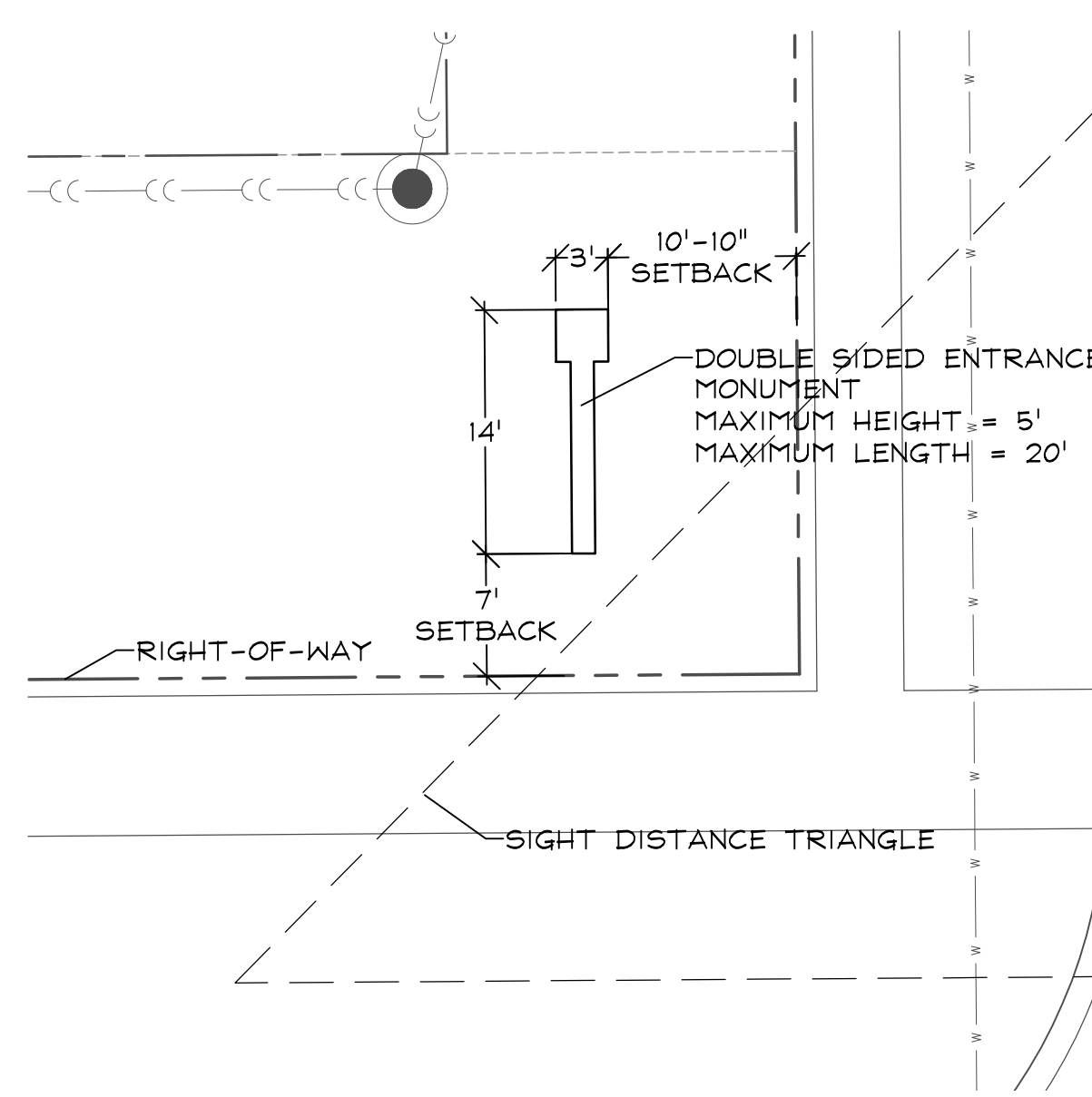
DECIDUOUS AND EVERGREEN SHRUBS
NOT TO SCALE



DECIDUOUS TREES
NOT TO SCALE



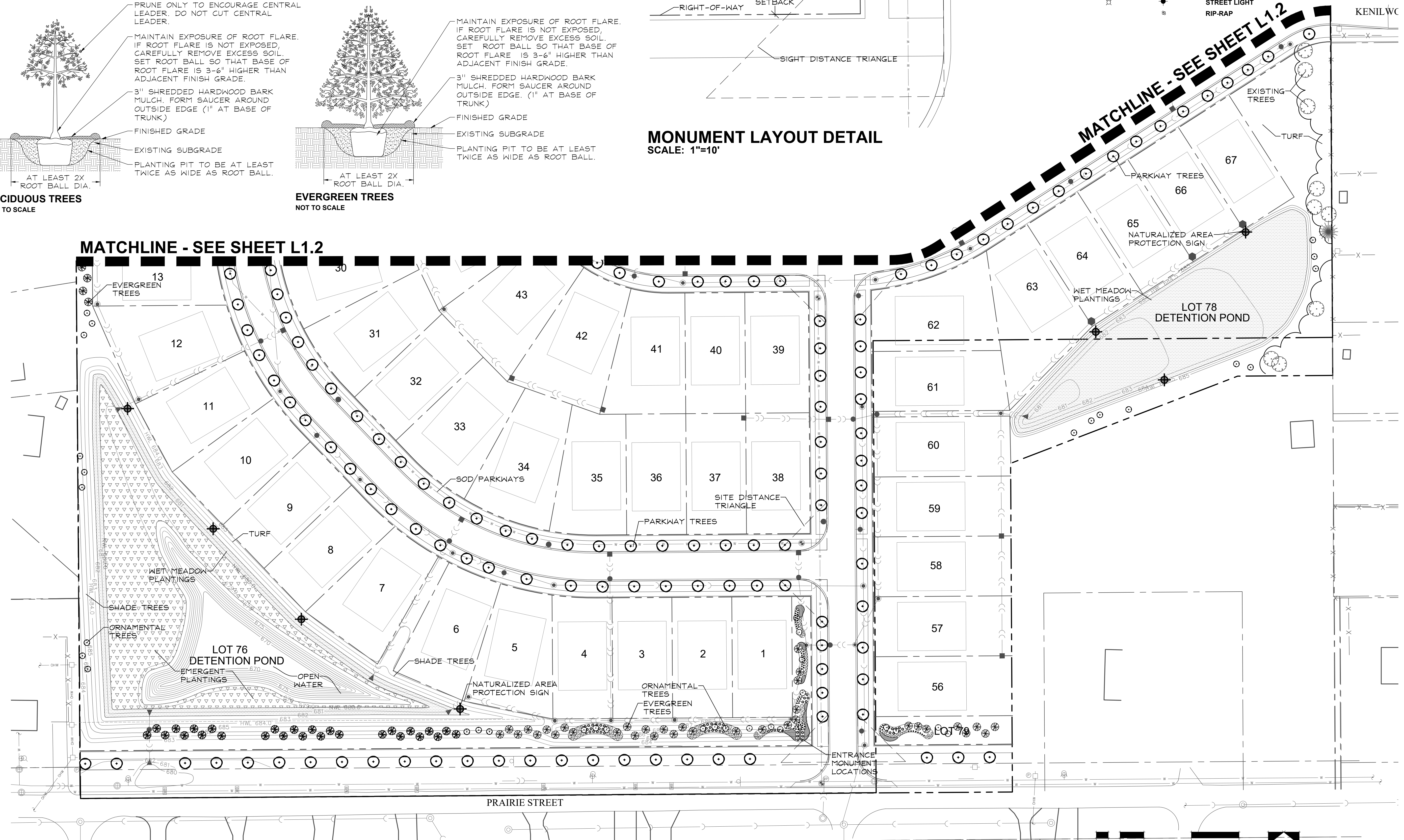
EVERGREEN TREES
NOT TO SCALE



MONUMENT LAYOUT DETAIL
SCALE: 1"=10'

SYMBOL LEGEND

EXISTING	PROPOSED	DESCRIPTION
○	●	MANHOLE
□	■	CATCH BASIN
○	○	INLET
○	○	CLEANOUT
○	○	SLOPE INLET BOX
○	○	HEADWALL
○	○	END SECTION
○	○	STORM SEWER
○	○	SANITARY SEWER
○	○	WATERMAIN
○	○	VALVE & BOX
○	○	WATER VALVE IN VAULT
○	○	FIRE HYDRANT
○	○	CONTOURS
○	○	ELEVATIONS
○	○	STREET LIGHT
○	○	RIP-RAP



GRWA
GARY R. WEBER ASSOCIATES, INC.
LAND PLANNING
ECOLOGICAL CONSULTING
LANDSCAPE ARCHITECTURE
402 WEST LIBERTY DRIVE
WHEATON, ILLINOIS 60187
PHONE: 630-668-7197

CLIENT
LENNAR
1700 EAST GOLF ROAD, SUITE 1100
SCHAUMBURG, IL 60173

ENGINEER
CEMCON, LTD.
2280 WHITE OAK CIRCLE, SUITE 100
AURORA, IL 60502

PRAIRIE MEADOWS

AURORA, ILLINOIS

PRELIMINARY LANDSCAPE PLAN

NO.	DATE	REVISIONS
2	11.29.2023	
1	11.13.2023	

DATE 10.05.2023
PROJECT NO. LN23143
DRAWN NKF
CHECKED REO
SHEET NO.