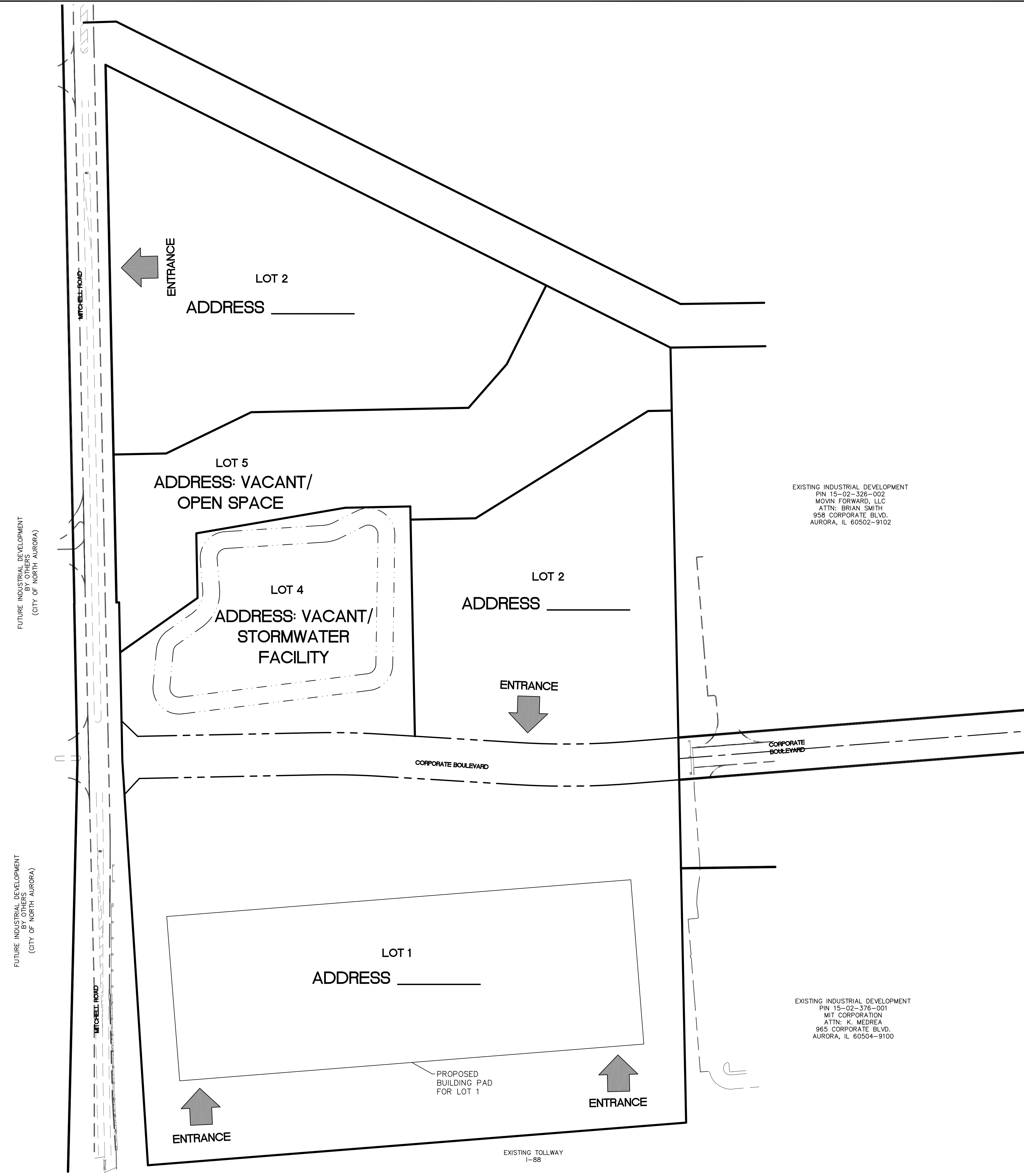
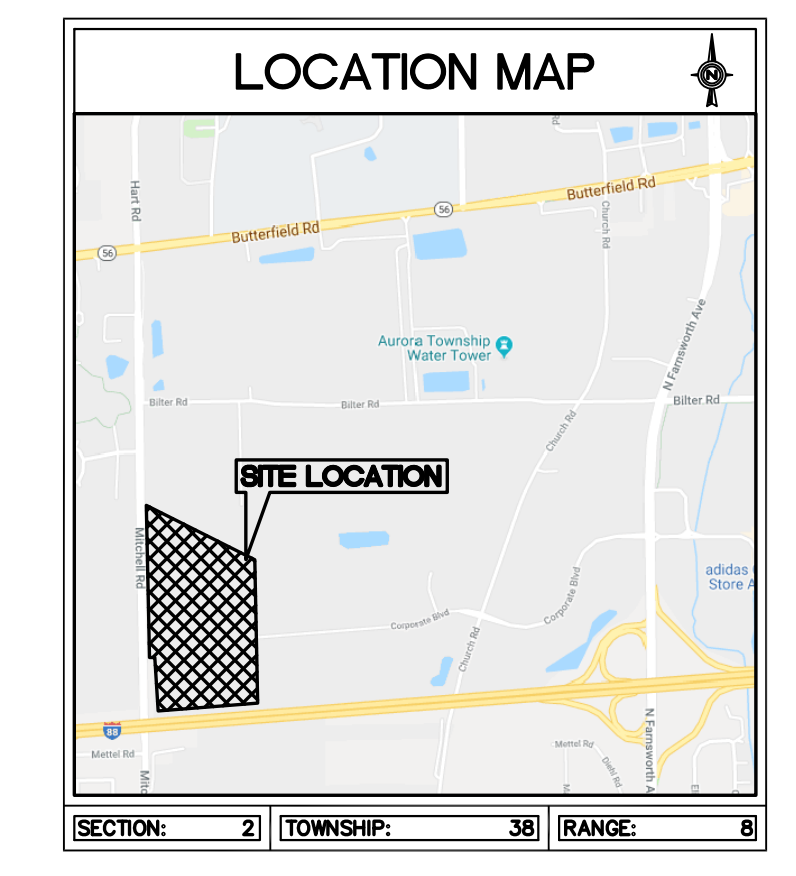


# ADDRESS PLAT FOR MITCHELL ROAD INDUSTRIAL PARK (LOTS 1 AND 4)

LEGEND		
EXISTING	DESCRIPTION	PROPOSED
⊙	CATCH BASIN	⊙
⊙	INLET	⊙
⊙	STORM MANHOLE	⊙
⊙	SANITARY MANHOLE	⊙
⊙	VALVE VAULT	⊙
⊙	FIRE HYDRANT	⊙
⊙	FLARED END SECTION	⊙
⊙	ELECTRICAL POWER POLE	⊙
⊙	OVERHEAD ELECTRIC WIRES	⊙
⊙	TRANSFORMER PAD	⊙
⊙	LIGHT POLE	⊙
⊙	SIGN	⊙
⊙	BOLLARD POLE	⊙
⊙	WATER MAIN	⊙
⊙	GAS MAIN	⊙
⊙	ELECTRIC LINE	⊙
⊙	TELEPHONE LINE	⊙
⊙	CABLE TV LINE	⊙
⊙	SANITARY SEWER	⊙
⊙	STORM SEWER	⊙
⊙	CONIFEROUS TREE W/DIAMETER	⊙
⊙	DECIDUOUS TREE W/DIAMETER	⊙
⊙	WOOD FENCE	⊙
⊙	CHAIN LINK FENCE	⊙
⊙	METAL GUARDRAIL	⊙
⊙	CONCRETE SURFACE	⊙
⊙	CONTOUR LINE	⊙
⊙	PERVIOUS AREA SLOPE DIRECTION	⊙
⊙	PAVEMENT SLOPE DIRECTION	⊙
⊙	OVERLAND OVERFLOW DIRECTION	⊙



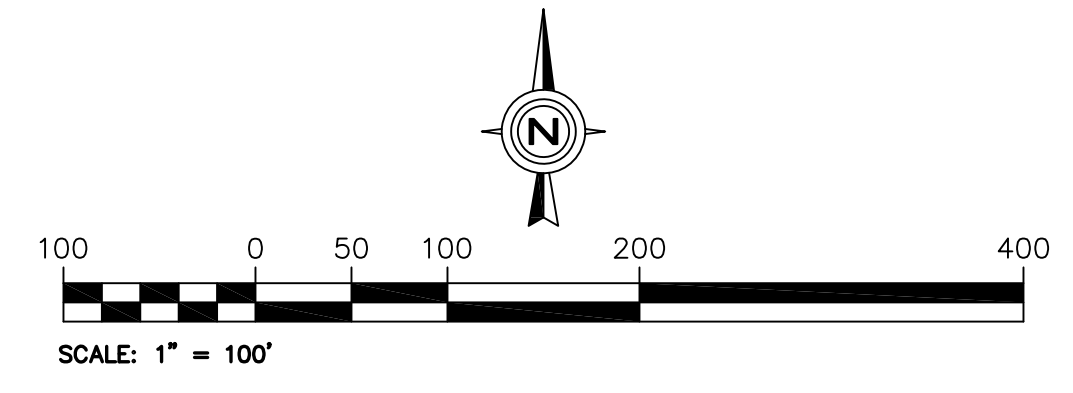
EXISTING INDUSTRIAL DEVELOPMENT  
PIN 15-02-326-002  
MOVN FORWARD, LLC  
ATTN: BRIAN SMITH  
958 CORPORATE BLVD.  
AURORA, IL 60502-9102

EXISTING INDUSTRIAL DEVELOPMENT  
PIN 15-02-376-001  
MIT CORPORATION  
ATTN: K. MEDREA  
965 CORPORATE BLVD.  
AURORA, IL 60504-9100

Temporary Street Designation	Street Name	Designation (i.e. Street, Lane, Court etc.)	Address Range
Street A	Corporate	Boulevard	
Street B	Mitchell	Road	
Street C			
Street D			

Existing Street Name	Designation (i.e. Street, Lane, Court etc.)	Proposed Address Range
Corporate	Boulevard	
Mitchell	Road	

Department	Print Name	Signature	Date



NO.	REVISIONS	DATE
1	REVISED PER COMMENTS FROM COA	5-2-18
2	REVISED PER COMMENTS FROM COA	5-8-18
3	REVISED PER COMMENTS FROM COA	6-1-18
4	REVISED PER COMMENTS FROM COA	6-11-18
5	REVISED PER COMMENTS FROM COA & ACCE	6-15-18
6	REVISED PER COMMENTS FROM COA	6-28-18

Prepared For:  
**The Pizzuti Companies**  
2001 Butterfield Road, Suite 440  
Downers Grove, IL 60515  
**MITCHELL RD. INDUSTRIAL PARK - AUROFA, IL**  
Mitchell Road at Corporate Blvd.  
Aurora, Illinois

Prepared By:



CHECKED BY: B. PERRY  
DESIGN BY: B. PERRY  
DRAWN BY: DMORUK  
DATE: APRIL 20, 2018  
SCALE: 1" = 100'  
PROJECT NO.: 17-062

J:\dwgs\17jobs\17062\17062.dwg, Address Plat