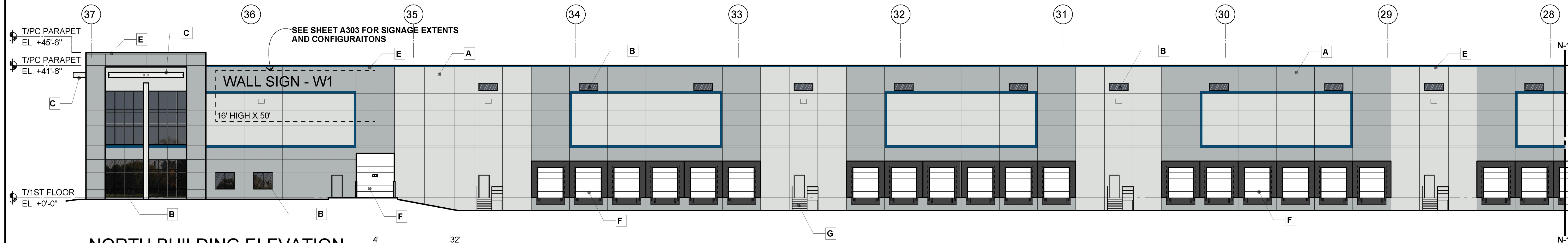


ELEVATIONS FOR UNIT 3 - LOT 5

SEE SHEET A302 FOR MATERIAL
LEGEND SCHEDULE AND A303 FOR
SIGNAGE AREAS AND DATA TABLES

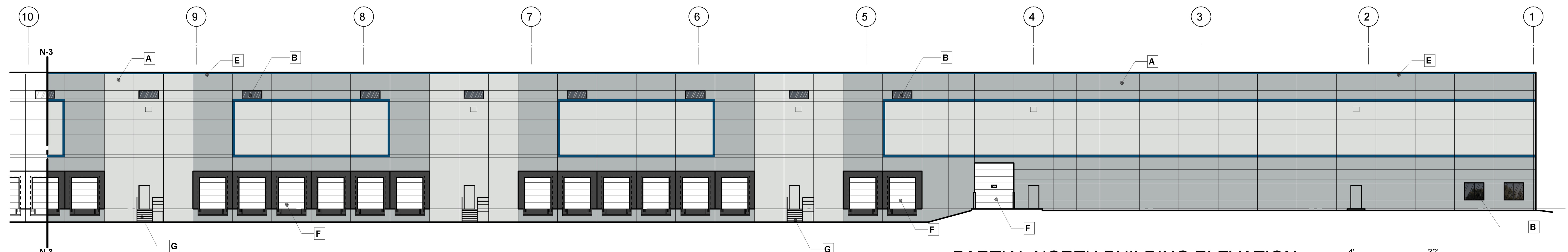
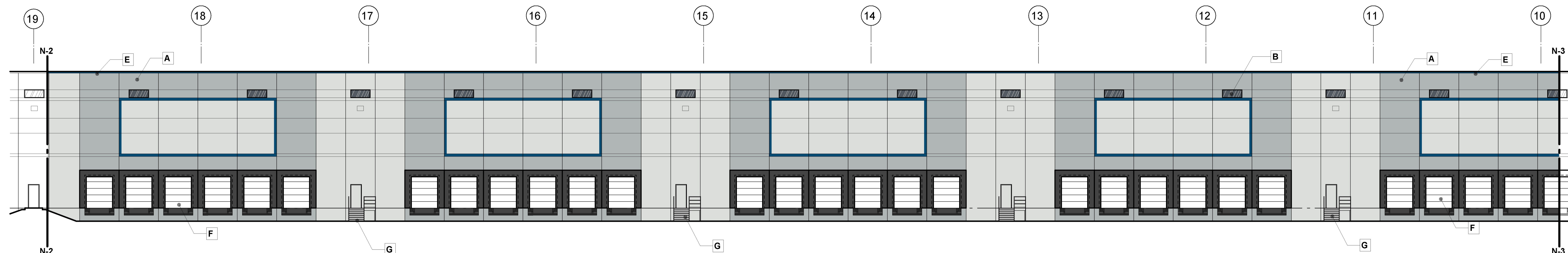
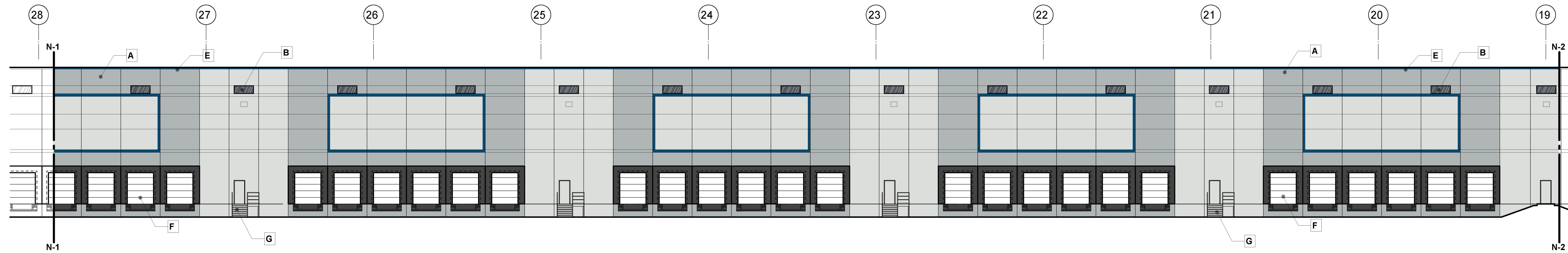
**Duke
REALTY**
1301 West 22nd Street
Suite #800
Oakbrook, IL 60523
847.232.5400 847.232.5691

ARCHITECT
HARRIS ARCHITECTS, INC.
WWW.HARRISARCHITECTS.COM 847.303.1155
HARRIS ARCHITECTS, INC.
4801 EMERSON AVENUE - SUITE 210
PALATINE, IL 60067
847.303.1155



NORTH BUILDING ELEVATION

SCALE: 1/16"=1'-0" 1' 16' 32' 64'



PARTIAL NORTH BUILDING ELEVATION

SCALE: 1/16"=1'-0" 1' 16' 32' 64'

**LOT 5
BUTTERFIELD EAST - UNIT 3**
FINAL PDD
DUKE PARKWAY
AURORA, ILLINOIS 60502
BUILDING ELEVATIONS

ISSUANCES

ISSUED FOR FINAL PDD	02-24-2016
FINAL PDD REVISIONS	03-07-2016

DRAWING INFORMATION

Scale:	AS NOTED
Date:	AS NOTED
Checked By:	***
Drawn By:	KSK
Duke Realty Job #:	DUKEAH-441
A/E Job #:	216027

DRAWING / SHEET TITLE

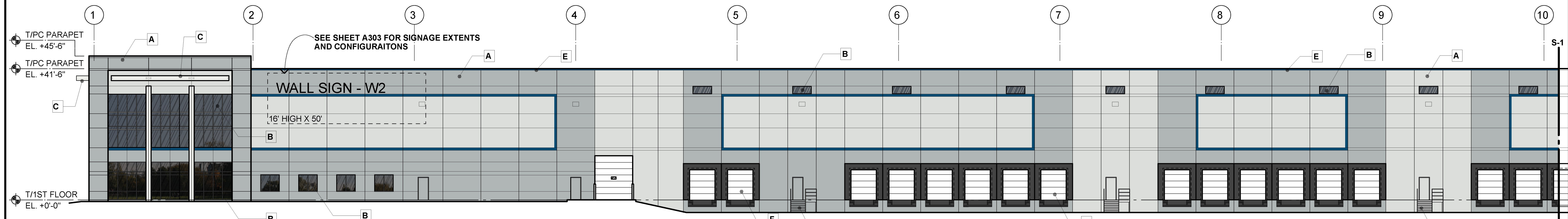
**BUILDING ELEVATIONS
NORTH ELEVATION**

SHEET NUMBER

A300

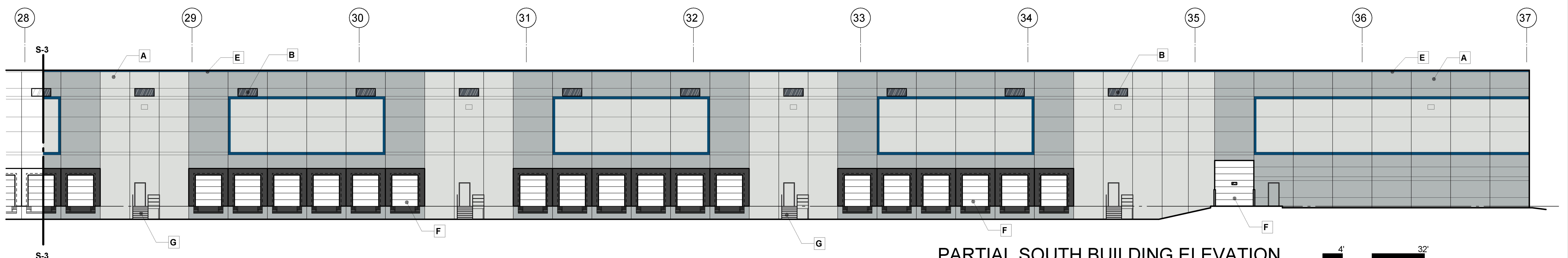
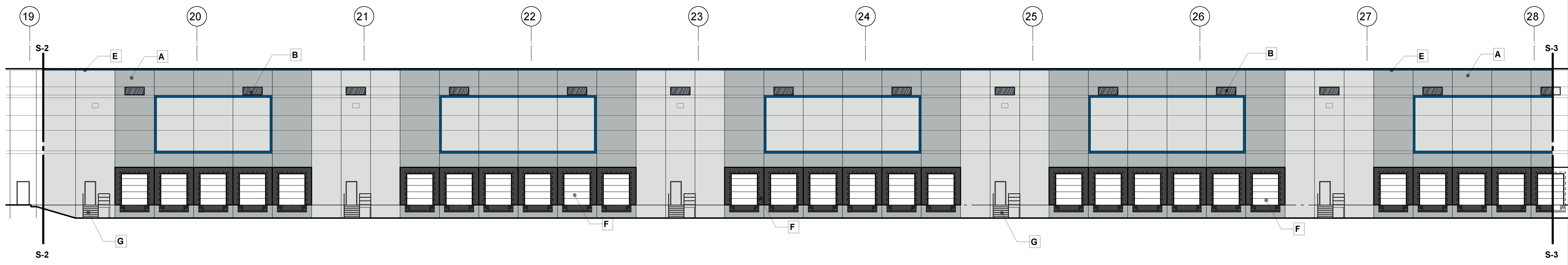
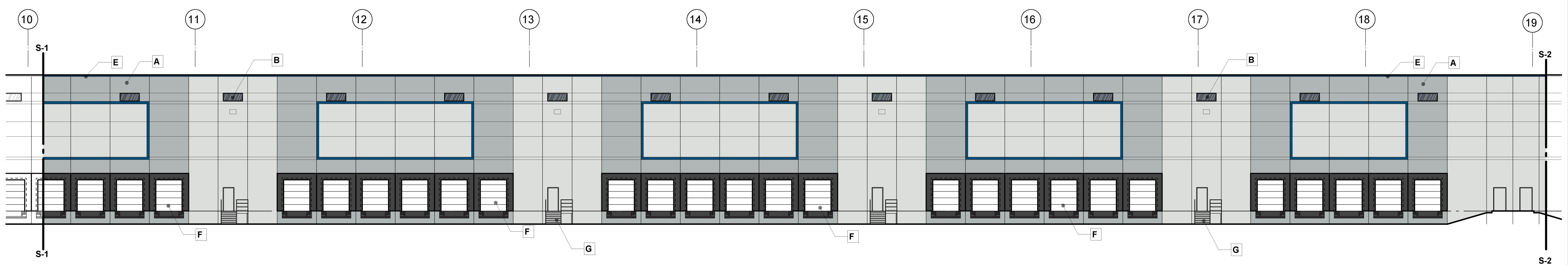
ELEVATIONS FOR UNIT 3 - LOT 5

SEE SHEET A302 FOR MATERIAL LEGEND SCHEDULE AND A303 FOR SIGNAGE AREAS AND DATA TABLES



SOUTH BUILDING ELEVATION

SCALE: 1/16"=1'-0" 1/16"=1'-0" 1' 16' 32' 64'



PARTIAL SOUTH BUILDING ELEVATION

SCALE: 1/16"=1'-0" 1' 16' 32' 64'

Duke REALTY
 1301 West 22nd Street
 Suite #800
 Oakbrook, IL 60523
 847.232.5400 847.232.5691

ARCHITECT
HARRIS ARCHITECTS, INC.
 WWW.HARRISARCHITECTS.COM 847.303.1155
 HARRIS ARCHITECTS, INC.
 4801 EMERSON AVENUE - SUITE 210
 PALATINE, IL 60067
 847.303.1155

LOT 5
BUTTERFIELD EAST - UNIT 3
 FINAL PDD
 DUKE PARKWAY
 AURORA, ILLINOIS 60502
BUILDING ELEVATIONS

ISSUANCES

ISSUED FOR FINAL PDD	02-24-2016
FINAL PDD REVISIONS	03-07-2016

DRAWING INFORMATION

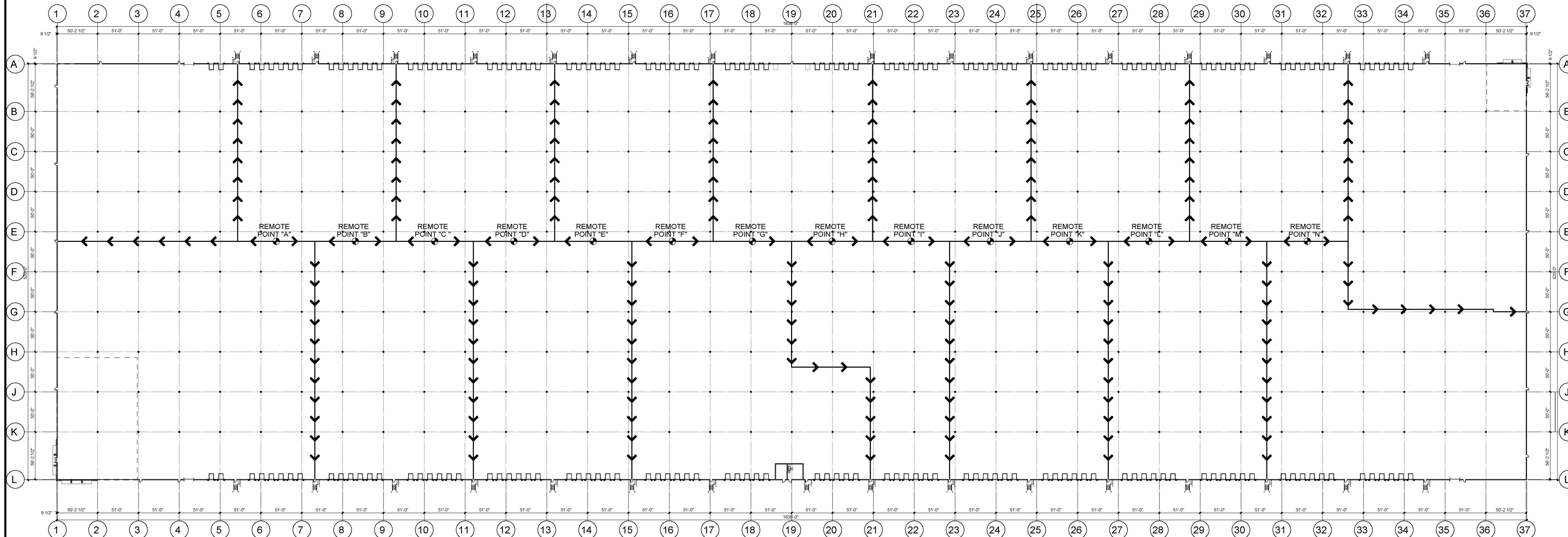
Scale:	AS NOTED
Date:	AS NOTED
Checked By:	***
Drawn By:	KSK
Duke Realty Job #:	DUKEAH-441
A/E Job #:	216027

DRAWING / SHEET TITLE
BUILDING ELEVATIONS SOUTH
SHEET NUMBER

A301

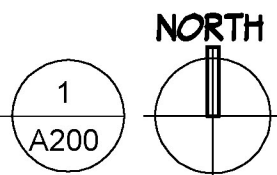
ELEVATIONS FOR UNIT 3 - LOT 5

SEE SHEET A302 FOR MATERIAL
LEGEND SCHEDULE AND A303 FOR
SIGNAGE AREAS AND DATA TABLES

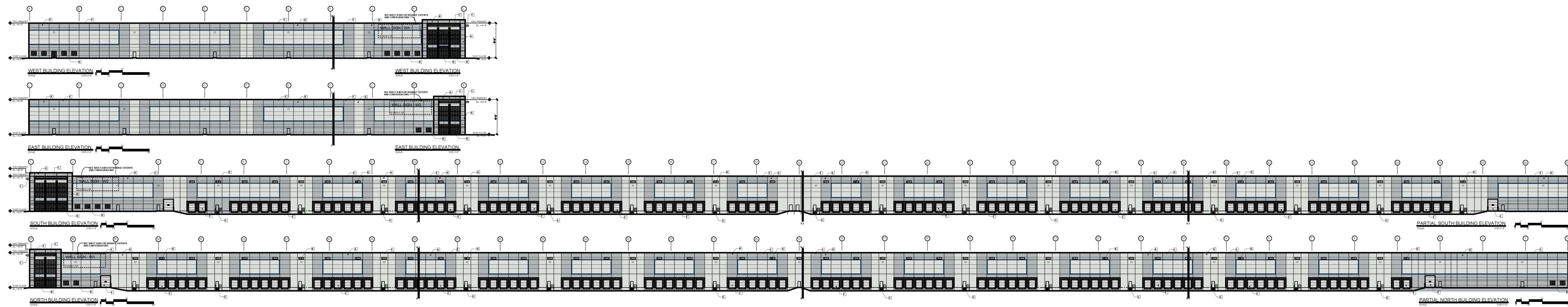


OVERALL BUILDING PLAN

SCALE: 1/64" = 1'-0"

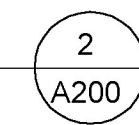


NOTE:
ALL REMOTE LOCATION POINTS
ARE WITHIN 400' TO
ACCESSIBLE EGRESS OR
EXTERIOR AREA OF RESCUE
ASSISTANCE



OVERALL BUILDING ELEVATIONS

SCALE: 1/64" = 1'-0"



Duke REALTY
1301 West 22nd Street
Suite #800
Oakbrook, IL 60523
847.232.5400 847.232.5691

ARCHITECT
HARRIS ARCHITECTS, INC.
WWW.HARRISARCHITECTS.COM 847.303.1155
HARRIS ARCHITECTS, INC.
4801 EMERSON AVENUE - SUITE 210
PALATINE, IL 60067
847.303.1155

LOT 5
BUTTERFIELD EAST - UNIT 3
FINAL PDD
DUKE PARKWAY
AURORA, ILLINOIS 60502
BUILDING ELEVATIONS

ISSUANCES

ISSUED FOR FINAL PDD	02-24-2016
FINAL PDD REVISIONS	03-07-2016

DRAWING INFORMATION

Scale:	AS NOTED
Date:	AS NOTED
Checked By:	***
Drawn By:	KSK
Duke Realty Job #:	DUKEAH-441
A/E Job #:	216027

DRAWING / SHEET TITLE

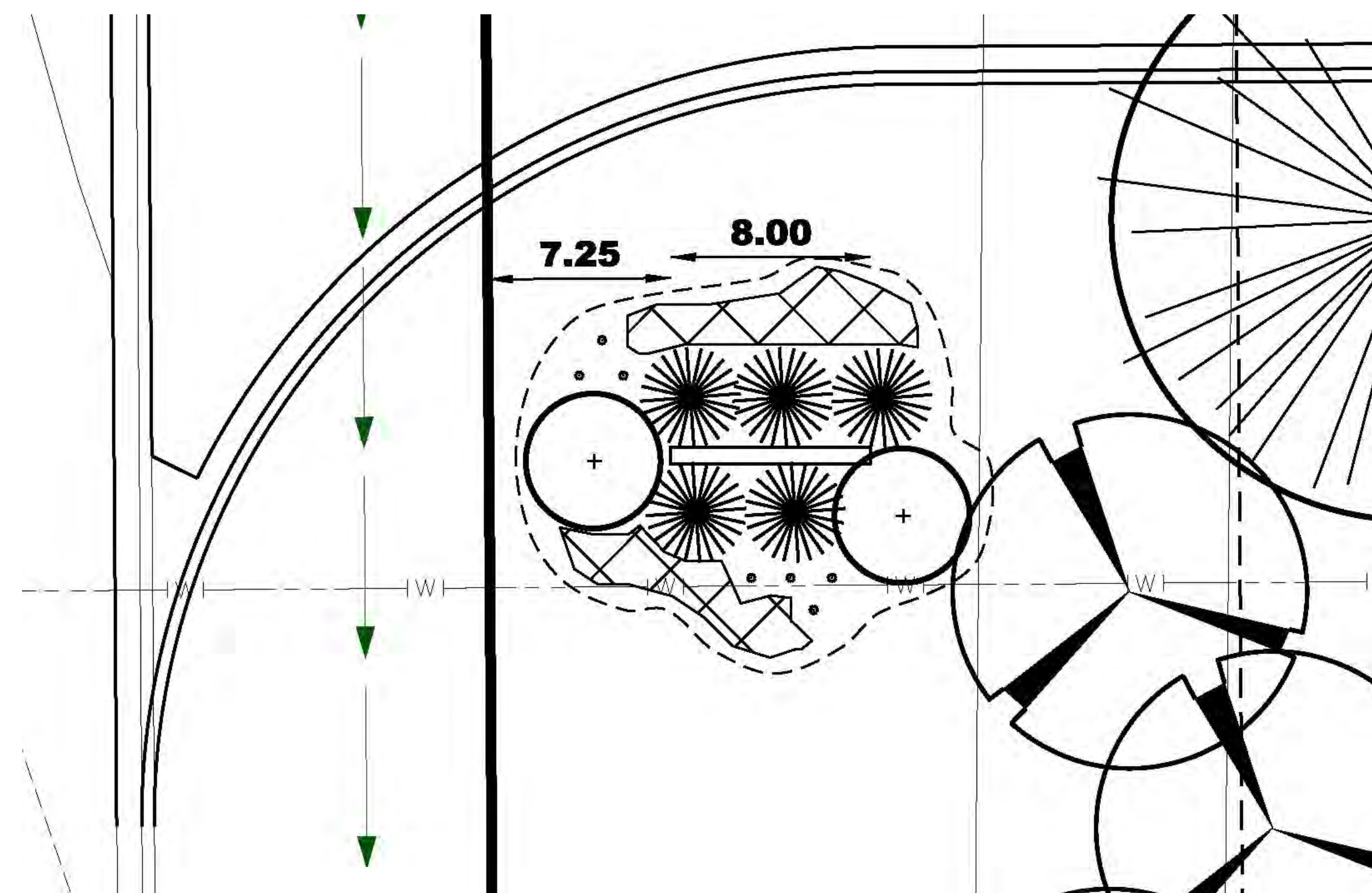
**OVERALL BUILDING
EXIT PLAN & ELEVATIONS**

SHEET NUMBER

A200

WALL SIGN NOTE:
ALL WALL MOUNTED BUILDING SIGNS SHOWN ARE SUGGESTED
AREA ALLOCATIONS ONLY. FINAL BUILDING & TENANT SIGNS SHALL BE ALLOWED
THE AREA ALLOCATIONS TO THE MAXIMUM ALLOWED BY CITY OF AURORA
ZONING ORDINANCE. ALL FINAL WALL SIGNS SHALL BE SUBMITTED PER AURORA
REQUIREMENTS.

SIGN DATA TABLES AND ELEVATIONS

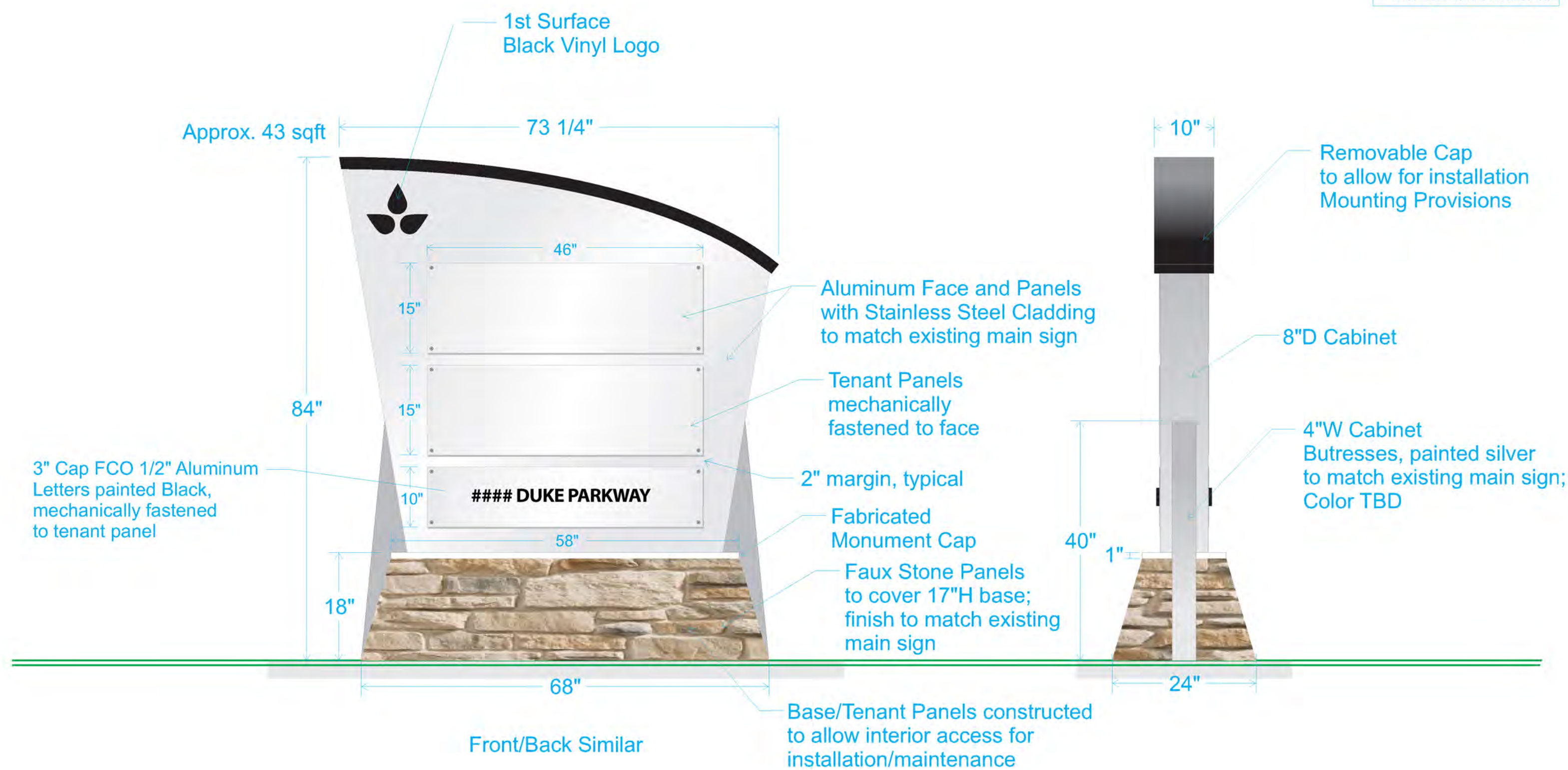


MONUMENT SIGN - LOCATION PLAN

SCALE: NTS

1
A303

*SIGNS ARE DOUBLE SIDED
**GROUND ILLUMINATED
***SEE CIVIL DRAWINGS
FOR PLACEMENT LOCATIONS



MONUMENT SIGN - ELEVATION

SCALE: NTS

2
A303

ELEVATION DATA TABLE: ELEVATIONS		
DESCRIPTION:	VALUE:	UNIT:
A) BUILDING HEIGHT	41'-6" (45'-6" AT RAISED PANELS)	FEET
B) GRADE ELEVATION	TBD	FEET
C) BUILDING SQUARE FOOTAGE BY FLOOR		
FIRST FLOOR (SINGLE STORY)	954,720 S.F.	SQUARE FEET
D) BUILDING SQUARE FOOTAGE		
	954,720 S.F.	SQUARE FEET
E) EXTERIOR MATERIAL LIST		
	SEE BUILDING ELEVATIONS WITH MATERIAL LEGEND	-

SIGNAGE DATA TABLE: GROUND SIGN			
GROUND SIGN #1	DESCRIPTION:	VALUE:	UNIT:
G1	LENGTH OF STREET FRONTAGE - SIGN LOCATION	520' (BUILDING)	FEET
	WIDTH OF SIGN FACE	73 1/4" (6'- 1 1/4")	FEET
	HEIGHT OF SIGN FACE	84" (7'-0")	FEET
	SQUARE FOOTAGE OF SIGN FACE	+/- 43 SF	SF
	HEIGHT OF SIGN - OVERALL	7'-0"	FEET
	WIDTH OF SIGN - OVERALL	7'-0"	FEET
	TYPE OF SIGN	ALUM CABINET	
	TYPE OF SIGN BASE	STONE PANELS	
IS THERE A DIGITAL DISPLAY	NO		

SIGNAGE DATA TABLE: WALL SIGNAGE			
WALL SIGN #1 - SOUTH WALL	DESCRIPTION:	VALUE:	UNIT:
W1	WIDTH OF FACADE - ON WHICH SIGN IS LOCATED	1,836'-0"	FEET
	HEIGHT OF FACADE - ON WHICH SIGN IS LOCATED	41'-6" AFF	FEET
	SQUARE FOOTAGE OF FACADE ON WHICH SIGN IS LOCATED	76,194 SF	SQUARE FEET
	WIDTH OF SIGN FACE	50'-0"	FEET
	HEIGHT OF SIGN FACE	16'-0"	FEET
	SQUARE FOOTAGE OF SIGN FACE	800 SF	SQUARE FEET
	PERCENT OF SIGN COVERAGE - FACADE ON WHICH SIGN IS LOCATED	1%	PERCENT (%)

SIGNAGE DATA TABLE: WALL SIGNAGE			
WALL SIGN #2 NORTH WALL	DESCRIPTION:	VALUE:	UNIT:
W2	WIDTH OF FACADE - ON WHICH SIGN IS LOCATED	1,836'-0"	FEET
	HEIGHT OF FACADE - ON WHICH SIGN IS LOCATED	41'-6" AFF	FEET
	SQUARE FOOTAGE OF FACADE ON WHICH SIGN IS LOCATED	76,194 SF	SQUARE FEET
	WIDTH OF SIGN FACE	50'-0"	FEET
	HEIGHT OF SIGN FACE	16'-0"	FEET
	SQUARE FOOTAGE OF SIGN FACE	800 SF	SQUARE FEET
	PERCENT OF SIGN COVERAGE - FACADE ON WHICH SIGN IS LOCATED	1%	PERCENT (%)

SIGNAGE DATA TABLE: WALL SIGNAGE			
WALL SIGN #3 WEST WALL	DESCRIPTION:	VALUE:	UNIT:
W3	WIDTH OF FACADE - ON WHICH SIGN IS LOCATED	520'-0"	FEET
	HEIGHT OF FACADE - ON WHICH SIGN IS LOCATED	41'-6" AFF	FEET
	SQUARE FOOTAGE OF FACADE ON WHICH SIGN IS LOCATED	21,580 SF	SQUARE FEET
	WIDTH OF SIGN FACE	50'-0"	FEET
	HEIGHT OF SIGN FACE	16'-0"	FEET
	SQUARE FOOTAGE OF SIGN FACE	800 SF	SQUARE FEET
	PERCENT OF SIGN COVERAGE - FACADE ON WHICH SIGN IS LOCATED	4%	PERCENT (%)

SIGNAGE DATA TABLE: WALL SIGNAGE			
WALL SIGN #4 EAST WALL	DESCRIPTION:	VALUE:	UNIT:
W4	WIDTH OF FACADE - ON WHICH SIGN IS LOCATED	520'-0"	FEET
	HEIGHT OF FACADE - ON WHICH SIGN IS LOCATED	41'-6" AFF	FEET
	SQUARE FOOTAGE OF FACADE ON WHICH SIGN IS LOCATED	21,580 SF	SQUARE FEET
	WIDTH OF SIGN FACE	50'-0"	FEET
	HEIGHT OF SIGN FACE	16'-0"	FEET
	SQUARE FOOTAGE OF SIGN FACE	800 SF	SQUARE FEET
	PERCENT OF SIGN COVERAGE - FACADE ON WHICH SIGN IS LOCATED	4%	PERCENT (%)



1301 West 22nd Street
Suite #800
Oakbrook, IL 60523
847.232.5400 847.232.5691

ARCHITECT



HARRIS ARCHITECTS, INC.
4801 EMERSON AVENUE - SUITE 210
PALATINE, IL 60067
847.303.1155

LOT 5
BUTTERFIELD EAST - UNIT 3
FINAL PDD
DUKE PARKWAY
AURORA, ILLINOIS 60502

SIGNAGE DETAILS & DATA

ISSUANCES

ISSUED FOR FINAL PDD	02-24-2016
FINAL PDD REVISIONS	03-07-2016
FINAL PDD REVISIONS	03-24-2016

Description Date

DRAWING INFORMATION

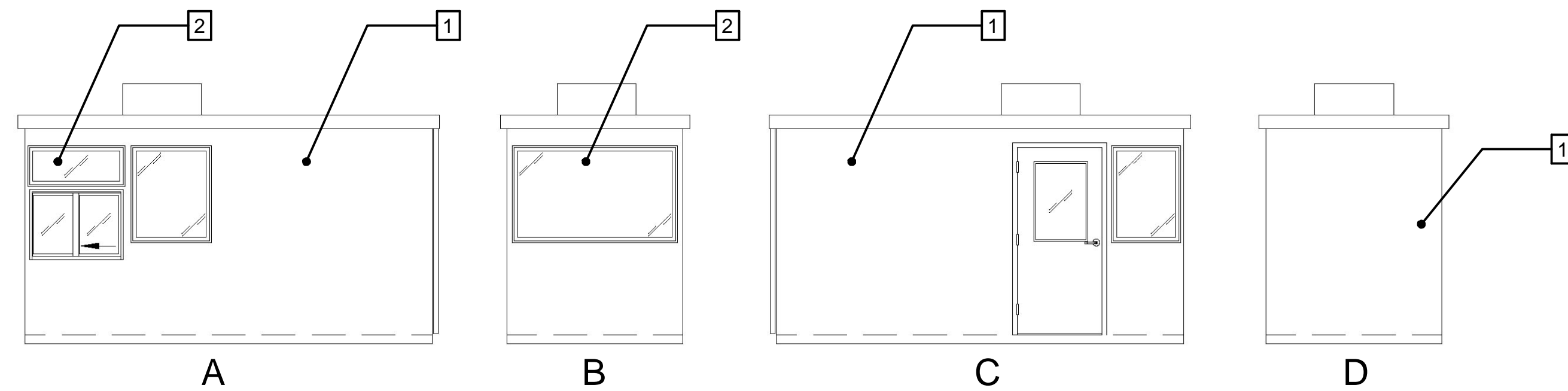
Scale:	AS NOTED
Date:	AS NOTED
Checked By:	***
Drawn By:	KSK
Duke Realty Job #:	DUKEAH-441
A/E Job #:	216027

DRAWING / SHEET TITLE

MONUMENT SIGN &
WALL SIGNS - DATA

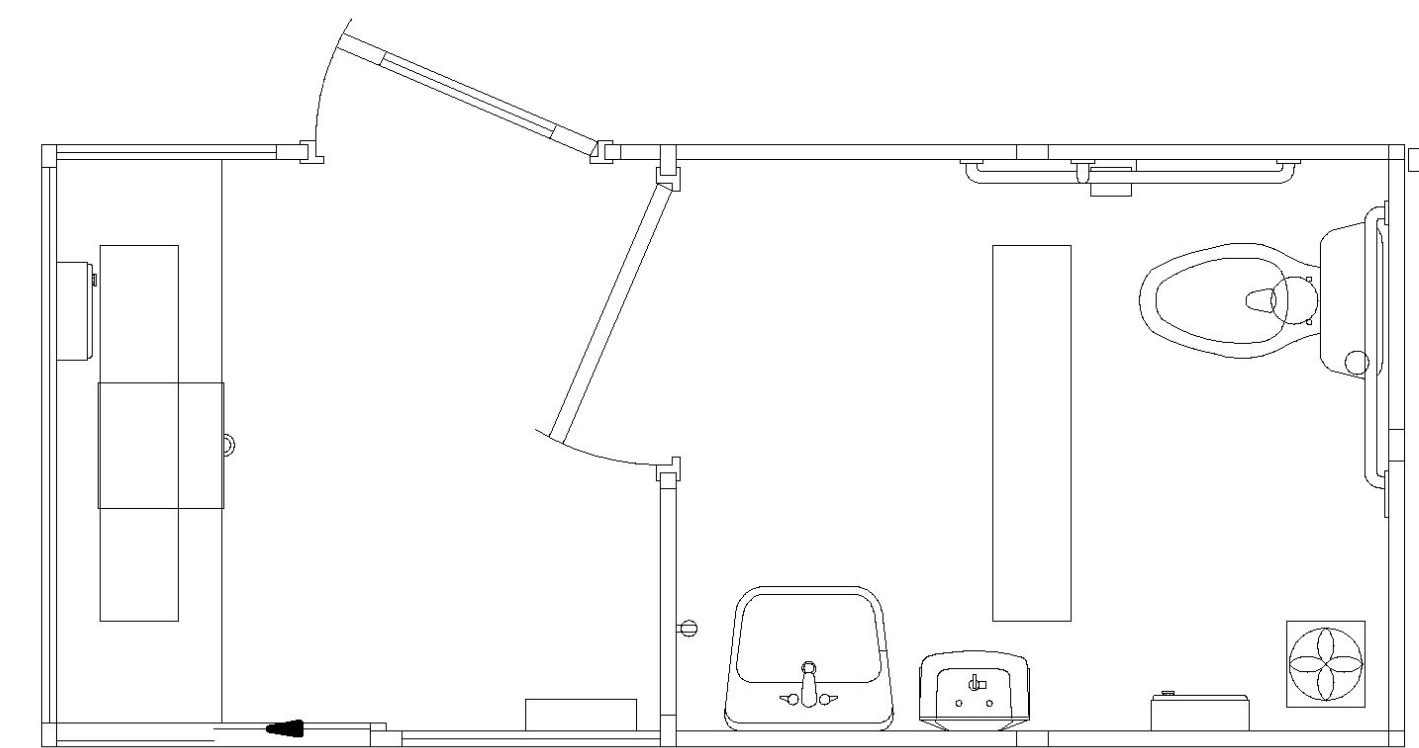
SHEET NUMBER

A303



PROPOSED GUARD SHACK ELEVATIONS

SCALE: NTS 3 A304



PROPOSED GUARD SHACK PLAN

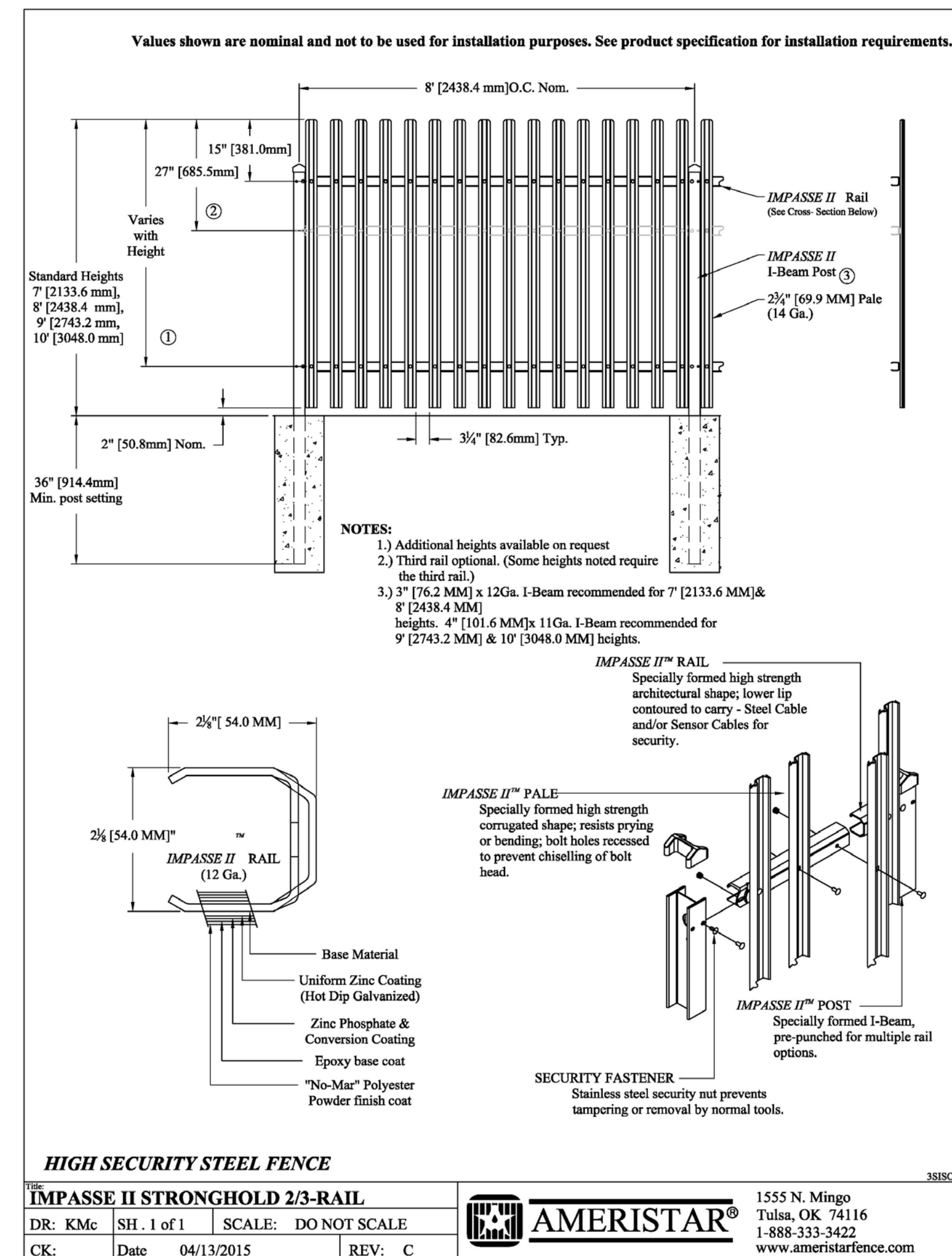
SCALE: NTS 4 A304

GUARD SHACK MATERIALS

- 1 PREFINISHED METAL PANEL - LIGHT GRAY
- 2 1" INSULATED TINTED GRAY GLASS - ALUM. FRAMES

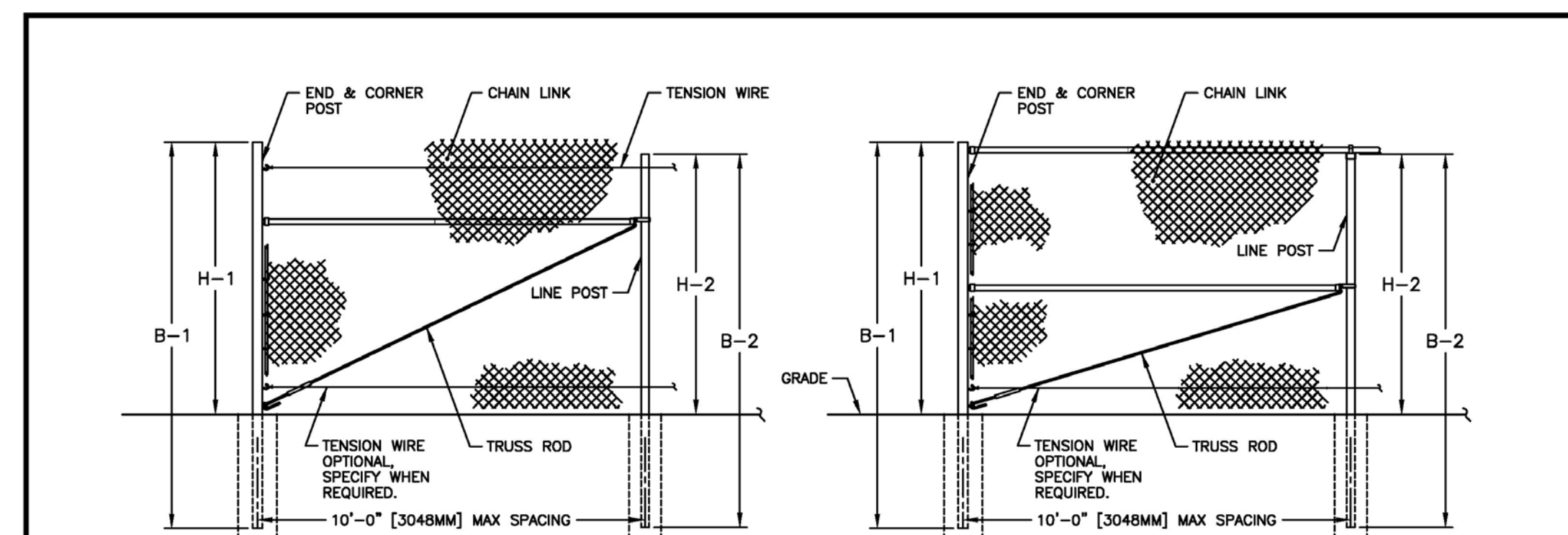
NOTE:
GUARD SHACK SIZE, HEIGHT, AND LOCATION SUBJECT TO CHANGE PENDING FINAL TENANT CONFIGURATION. SEE CIVIL PLANS FOR CURRENT LOCATIONS.

NOTE:
FENCE DETAILS ARE SHOWN FOR REFERENCE ONLY - SEE CIVIL PLANS FOR EXTENTS, CONFIGURATIONS, AND FINAL HEIGHTS



PROPOSED ORNAMENTAL FENCE

SCALE: NTS 2 A304



FENCE SECTION ELEVATION WITHOUT TOP RAIL & WITHOUT BARBED WIRE

FENCE SECTION ELEVATION WITH TOP RAIL & WITHOUT BARBED WIRE

FENCE HEIGHT	END & CORNER POSTS			LINE POSTS	
	NOMINAL HEIGHT	B-1 BAR LENGTH	H-1 HEIGHT ABOVE GRADE	B-2 BAR LENGTH	H-2 HEIGHT ABOVE GRADE
5'-0" [1524MM]	8'-0" [2438MM]	5'-0 5/8" [1540MM]	7'-8" [2337MM]	4'-8 7/8" [1445MM]	
6'-0" [1829MM]	9'-0" [2743MM]	6'-0 5/8" [1845MM]	8'-8" [2642MM]	5'-8 7/8" [1749MM]	
7'-0" [2134MM]	10'-0" [3048MM]	7'-0 5/8" [2150MM]	9'-8" [2946MM]	6'-8 7/8" [2054MM]	
8'-0" [2438MM]	11'-0" [3353MM]	8'-0 5/8" [2454MM]	10'-8" [3251MM]	7'-8 7/8" [2359MM]	
9'-0" [2743MM]	12'-0" [3658MM]	9'-0 5/8" [2759MM]	11'-8" [3556MM]	8'-8 7/8" [2664MM]	
10'-0" [3048MM]	13'-0" [3962MM]	10'-0 5/8" [3064MM]	12'-8" [3861MM]	9'-8 7/8" [2969MM]	
11'-0" [3353MM]	14'-0" [4267MM]	11'-0 5/8" [3369MM]	13'-8" [4166MM]	10'-8 7/8" [3273MM]	
12'-0" [3658MM]	15'-0" [4572MM]	12'-0 5/8" [3674MM]	14'-8" [4470MM]	11'-8 7/8" [3578MM]	

NOTES:
1. THIS DWG CORRESPONDS WITH DWGS 1-1110 & 1-1130.
2. SPECIFICATIONS SHOWN CAN BE CHANGED BY MASTER HALCO ONLY.

MASTER HALCO ANCHOR FENCE PRODUCTS by Master Halco
Oranges, CA
Phone No: 800-229-5615
www.FenceOnline.com

TYPICAL HIGH FENCE WITHOUT BARBED WIRE

DATE: 09-27-95
REV: C
REV DATE: 08-04-06

BY: JRR
DWG: 1-1000
LAYER: 1
SCALE: 1/4" = 1'-0"

PROPOSED BLACK VINYL FENCE

SCALE: NTS 1 A304

Duke REALTY
1301 West 22nd Street
Suite #800
Oakbrook, IL 60523
847.232.5400 847.232.5691

ARCHITECT
HARRIS ARCHITECTS, INC.
WWW.HARRISARCHITECTS.COM 847.303.1155
HARRIS ARCHITECTS, INC.
4801 EMERSON AVENUE - SUITE 210
PALATINE, IL 60067
847.303.1155

LOT 5
BUTTERFIELD EAST - UNIT 3
FINAL PDD
DUKE PARKWAY
AURORA, ILLINOIS 60502

GUARD SHACK & FENCE DETAILS

ISSUANCES

ISSUED FOR FINAL PDD	02-24-2016
FINAL PDD REVISIONS	03-07-2016
FINAL PDD REVISIONS	03-24-2016

#	Description	Date

DRAWING INFORMATION

Scale: AS NOTED
Date: AS NOTED
Checked By: ***
Drawn By: KSK
Duke Realty Job #: DUKEAH-441
A/E Job #: 216027

DRAWING / SHEET TITLE
GUARD SHACK & FENCE DETAILS

SHEET NUMBER
A304



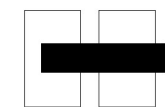
CONCEPTUAL ARCHITECTURAL RENDERING (SW CORNER)

COLORS AND PAINT PATTERNS SHOWN
AS CONCEPT ONLY.
SUBJECT TO CHANGE PENDING
FINAL TENANT CONFIGURATION

BUTTERFIELD UNIT 3 - LOT 5
DUKE PARKWAY
AURORA, IL

R-1.0

02-24-2016



HARRIS ARCHITECTS, INC.
WWW.HARRISARCHITECTS.COM 847.303.1155