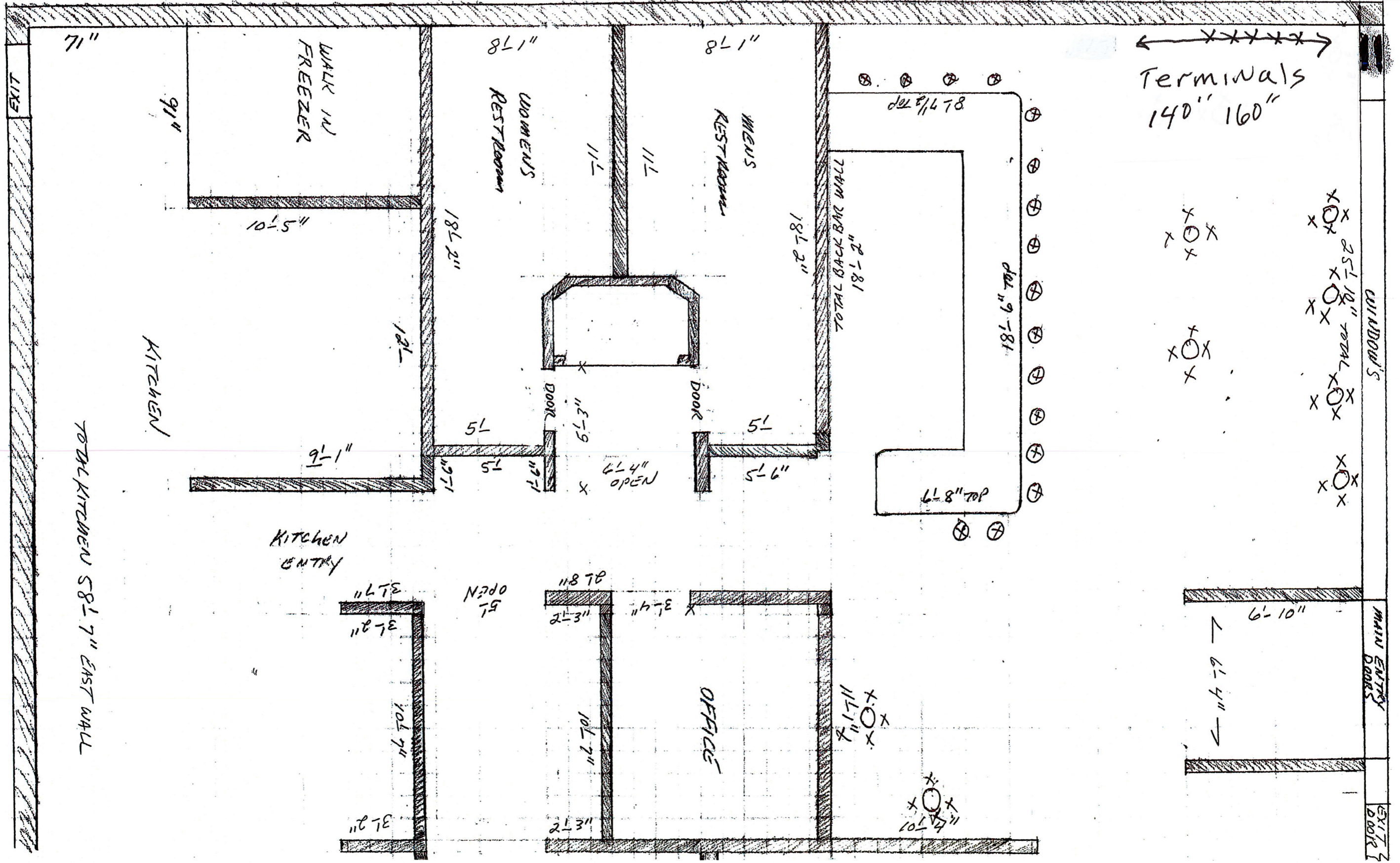


HILNOS

AC¹⁵ Pub



EAST

WEST

Terminals
140" 160"

WINDOWS

MAIN ENTRY DOORS

EXIT DOORS

71"

9'1"

WALK IN FREEZER

10'5"

KITCHEN

TOTAL KITCHEN 58'7" EAST WALL

KITCHEN ENTRY

9'1"

11'2" 3'2" 10'7" 3'2"

10'7"

3'2"

8'1"

WOMEN'S RESTROOM

18'2"

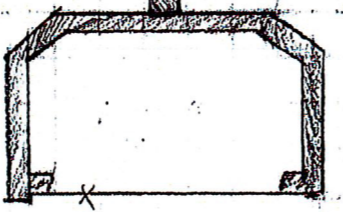
11'1"

11'1"

8'1"

MEN'S RESTROOM

18'2"



DOOR

11'3"

6'4" OPEN

DOOR

5'6"

TOTAL BACK BAR WALL 18'2"

Dial #9-181

Dial #9-181

6'8" TOP



Terminals 140" 160"

XOX XOX

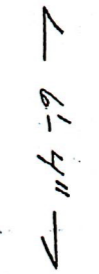
XOX XOX

XOX XOX

XOX XOX

XOX XOX

6'10"



6'4"

XOX XOX

XOX XOX

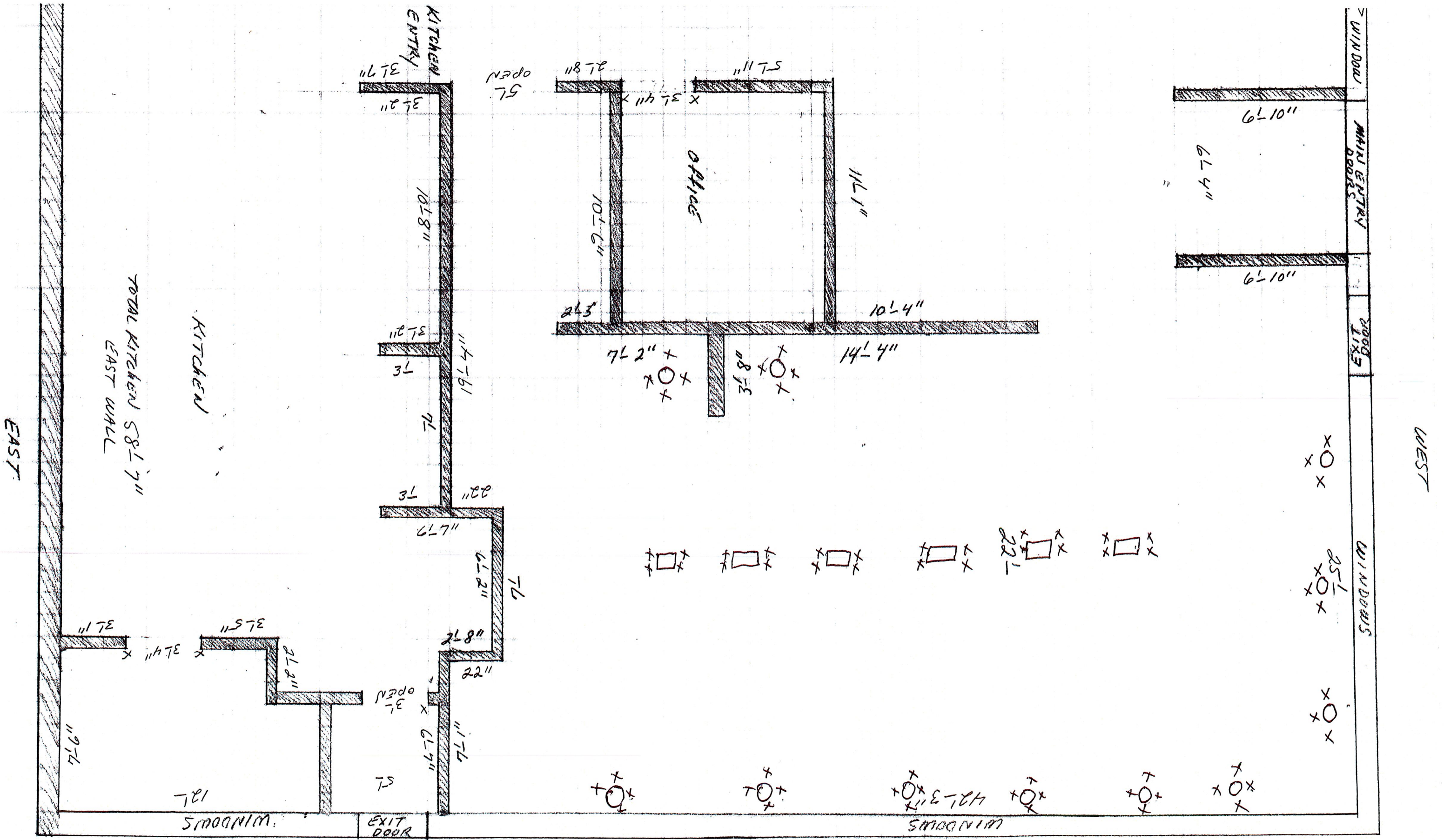
OFFICE

11'8" 2'3" 11'4" 2'3"

10'2"

2'3"

5'5" OPEN



AC'S PUB unit 3600sq BAR 16 seats
 TABLES 100 seats
 SCALE 1/4" = 1'

NORTH