

ELEVATIONS



Main Entry (View from Northwest)



View from Northeast



DEERPETH COMMERCE CENTER
AURORA, IL

ELEVATIONS Conceptual Perspectives

Elevation Data Table: Elevations		
Description	Value	Unit
a) Building Height	37.00	Feet
b) Grade Elevation	0	Feet
c) Building Square Footage by Floor	304,560	Square Feet
d) Building Square Footage	304,560	Square Feet

Signage Data Table: Ground Signage			
Grid Sign #	Description	Value	Unit
	i) Length of sheet frontage - on which Sign is Located	845	Feet
	ii) Width of Sign Face	12.00	Feet
	iii) Height of Sign Face	4.00	Feet
	iv) Square Footage of Sign Face	48	Square Feet
	v) Height of Sign (overall)	7	Feet
	vi) Width of Sign (overall)	12	Feet
	vii) Type of Sign Base	Single-Face Alum Cabinet	
1	viii) Type of Sign Base	Precast Concrete	
	ix) Is there a Digital Display	no	
	x) If Yes then, Location of Digital Display on the sign		
	Height of Digital Display	Feet	
	Width of Digital Display	Feet	
	Square Footage of Digital Display	Square Feet	
	Percent of Digital Display Sign Coverage	Percent	

Signage Data Table: Wall Signage			
Wall Sign #	Description	Value	Unit
	i) Width of Façade - on which Sign is Located	470	Feet
	ii) Height of Façade - on which Sign is Located	37	Feet
	iii) Square Footage of Façade - on which Sign is Located	17,390	Square Feet
1	iv) Width of Sign Face	7.75	Feet
	v) Height of Sign Face	6.00	Feet
	vi) Square Footage of Sign Face	47	Square Feet
	vii) Percent of Sign Coverage - Façade on which Sign is Located	0%	Percent
Wall Sign #	Description	Value	Unit
	i) Width of Façade - on which Sign is Located	470	Feet
	ii) Height of Façade - on which Sign is Located	37	Feet
	iii) Square Footage of Façade - on which Sign is Located	17,390	Square Feet
2	iv) Width of Sign Face	7.75	Feet
	v) Height of Sign Face	6.00	Feet
	vi) Square Footage of Sign Face	47	Square Feet
	vii) Percent of Sign Coverage - Façade on which Sign is Located	0%	Percent
Wall Sign #	Description	Value	Unit
	i) Width of Façade - on which Sign is Located	848	Feet
	ii) Height of Façade - on which Sign is Located	37	Feet
	iii) Square Footage of Façade - on which Sign is Located	23,676	Square Feet
3	iv) Width of Sign Face	7.75	Feet
	v) Height of Sign Face	6.00	Feet
	vi) Square Footage of Sign Face	47	Square Feet
	vii) Percent of Sign Coverage - Façade on which Sign is Located	0%	Percent

OWNER
CONOR COMMERCIAL REAL ESTATE
9550 WEST HIGGINS ROAD
ROSEMONT, IL 60018

PETITIONER:
CONOR COMMERCIAL REAL ESTATE
9550 WEST HIGGINS ROAD
ROSEMONT, IL 60018

WARE MALCOMB

CHI14-0272-00
06.17.2015
07.22.2015 (REV)



DEERPATH COMMERCE CENTER
AURORA, IL

ELEVATIONS Conceptual Elevations

KEY NOTES

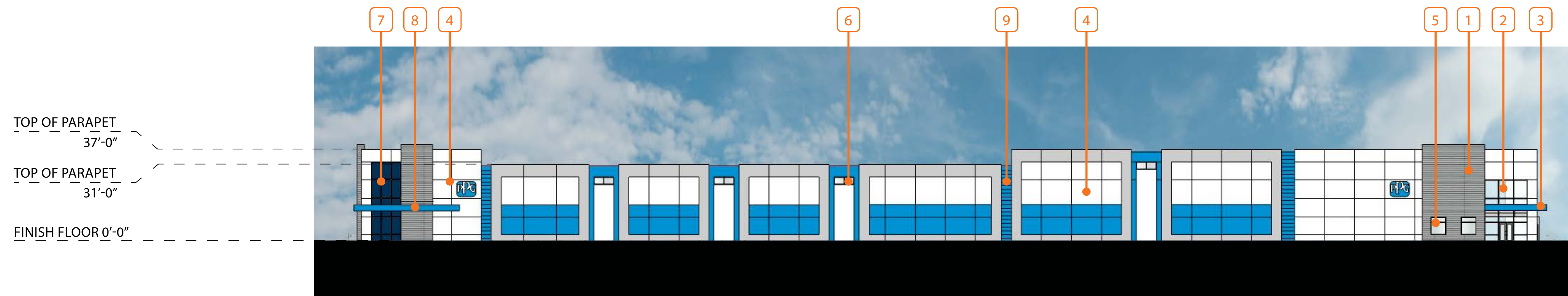
- 1 CORRUGATED METAL PANEL WITH HI-GLOSS "METALLIC" FINISH
- 2 STACKED STOREFRONT GLAZING AT MAIN LOBBY AREA. ALL GLAZING SHALL BE HIGH PERFORMANCE INSULATED UNITS, FRONT SET ON 2" CAPTURED ANODIZED MULLIONS.
- 3 COATED STEEL TUBE CANOPY. ENTRY DOORS ARE MEDIUM STILE DOUBLE STOREFRONT DOORS.
- 4 TYPICAL PRE-CAST CONCRETE PANEL WITH STANDARD REVEALS AND JOINTS. BLUE COLOR CORRESPONDS WITH STANDARD COMPANY COLOR.
- 5 PUNCHED OPENING WINDOWS AT THE OFFICE AREA.
- 6 CLERESTORY GLAZING: HIGH PERFORMANCE INSULATED GLAZING UNITS IN ALUMINUM FRAMES
- 7 SMOOTH DARK-PAINTED PRECAST WALL WITH WIDE LIGHT-PAINTED REVEALS TO EMULATE GLAZING COLOR AND MODULE
- 8 COATED TUBE-STEEL EYEBROW CANOPY
- 9 PRECAST CONCRETE WALL PANEL WITH FORM-LINER TEXTURE ON SURFACE- PAINT

OWNER
CONOR COMMERCIAL REAL ESTATE
9550 WEST HIGGINS ROAD
ROSEMONT, IL 60018

PETITIONER:
CONOR COMMERCIAL REAL ESTATE
9550 WEST HIGGINS ROAD
ROSEMONT, IL 60018

WARE MALCOMB

CHI14-0272-00
06.17.2015
07.22.2015 (REV)



North Elevation

Scale: 1" = 25'-0"



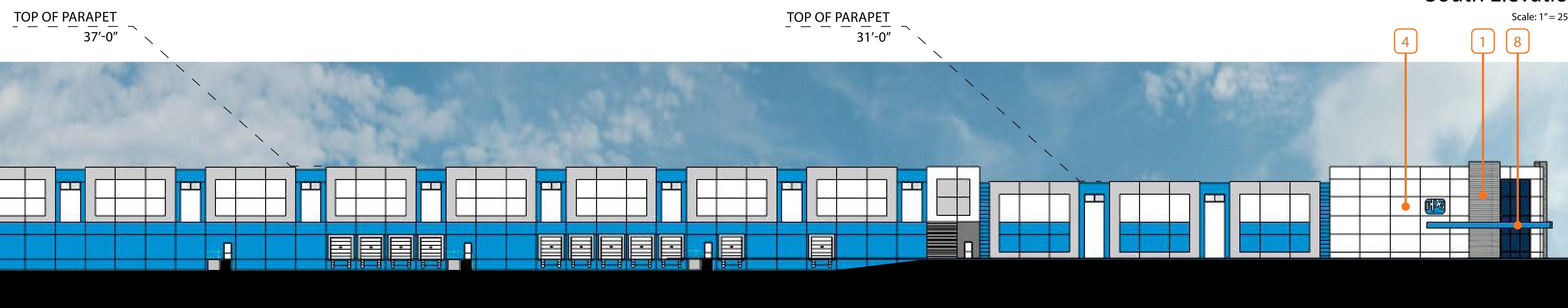
West Elevation

Scale: 1" = 25'-0"



South Elevation

Scale: 1" = 25'-0"



East Elevation

Scale: 1" = 25'-0"



DEERPATH COMMERCE CENTER
AURORA, IL

ELEVATIONS Site Plan

PROJECT DATA:

SITE AREA:	25.88 AC (1,127,182 SF)
PROPOSED BUILDING AREA:	304,560 SF
OFFICE:	5,503 SF
SHIPPING OFFICE:	1,206 SF
RECEIVING OFFICE:	320 SF
WAREHOUSE:	297,531 SF
FUTURE EXPANSION:	159,800 SF
F.A.R.:	0.27
DOCK DOORS:	33 POSITIONS
w LEVS & ROTATING LOCKS:	23 POSITIONS
w LEVS & MANUAL LOCKS:	7 POSITIONS
DUMPSTERS:	3 POSITIONS
FUTURE DOCK DOORS:	25 POSITIONS
DRIVE-IN DOORS:	2 POSITIONS
AUTO PARKING:	80 STALLS
TRAILER PARKING:	44 STALLS
FUTURE AUTO PRKG:	214 STALLS
FUTURE TRAILER PRKG:	24 STALLS

- ◀ DOCK HIGH TRUCK DOOR
- ◀ FUTURE DOCK HIGH TRUCK DOOR
- GRADE LEVEL TRUCK DOOR

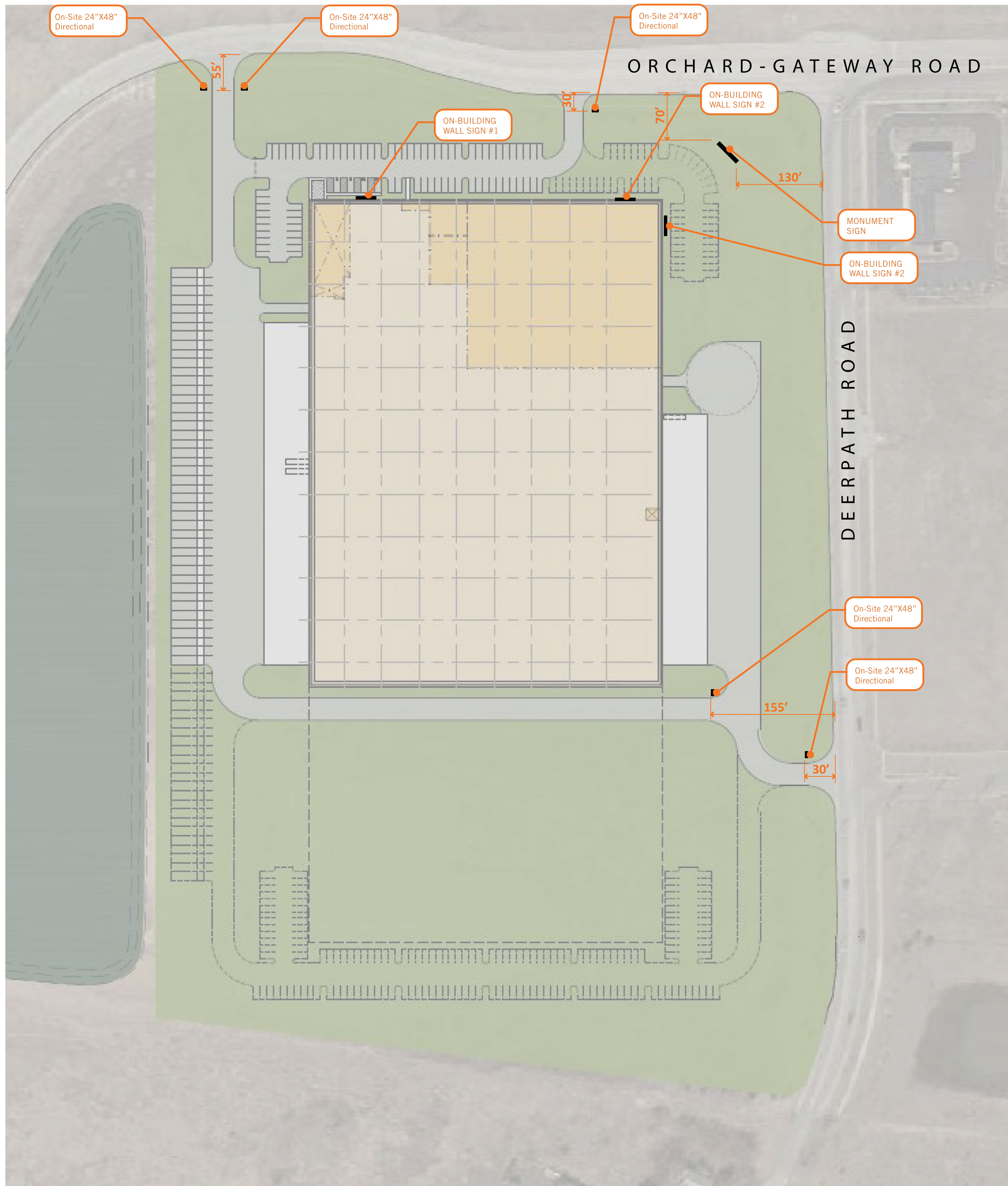
OWNER
CONOR COMMERCIAL REAL ESTATE
9550 WEST HIGGINS ROAD
ROSEMONT, IL 60018

PETITIONER:
CONOR COMMERCIAL REAL ESTATE
9550 WEST HIGGINS ROAD
ROSEMONT, IL 60018



WARE MALCOMB

CHI14-0272-00
06.17.2015
07.22.2015 (REV)



DEERPARK COMMERCE CENTER
AURORA, IL

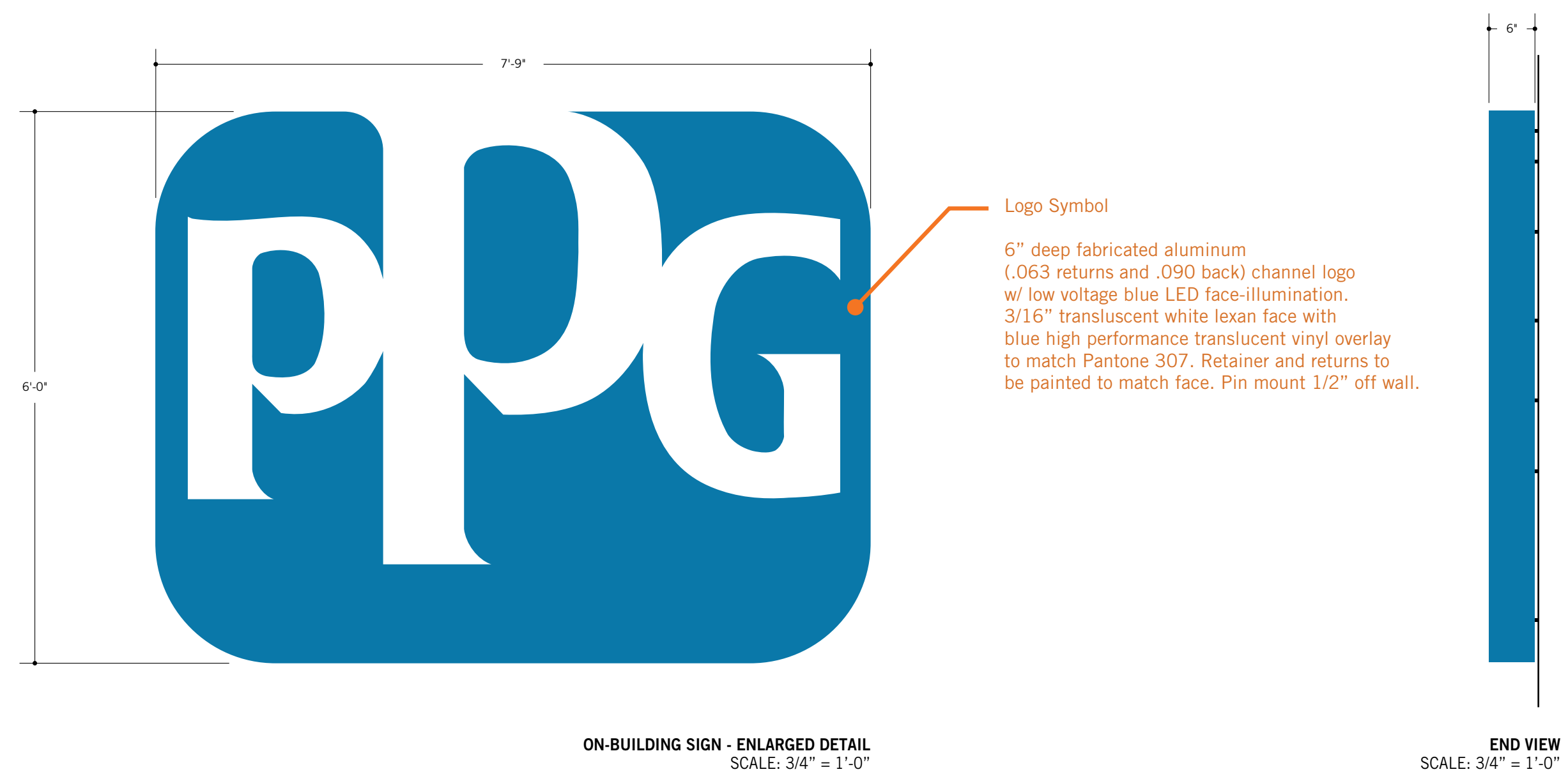
ELEVATIONS
Signage Program

OWNER
CONOR COMMERCIAL REAL ESTATE
9550 WEST HIGGINS ROAD
ROSEMONT, IL 60018

PETITIONER:
CONOR COMMERCIAL REAL ESTATE
9550 WEST HIGGINS ROAD
ROSEMONT, IL 60018

WARE MALCOMB

CHI14-0272-00
06.17.2015
07.22.2015 (REV)

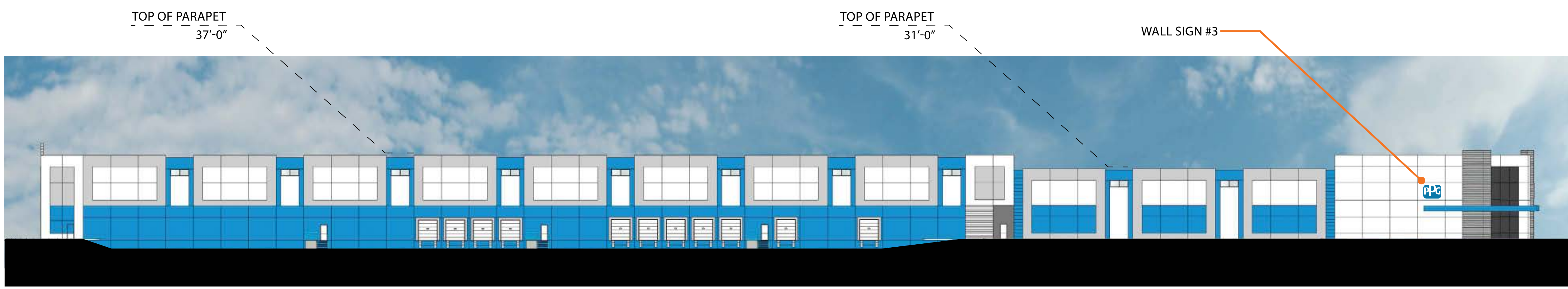


DEERPATH COMMERCE CENTER
AURORA, IL

ELEVATIONS
Signage Program



North Elevation
Scale: 1" = 25'-0"



East Elevation
Scale: 1" = 25'-0"

OWNER
CONOR COMMERCIAL REAL ESTATE
9550 WEST HIGGINS ROAD
ROSEMONT, IL 60018

PETITIONER:
CONOR COMMERCIAL REAL ESTATE
9550 WEST HIGGINS ROAD
ROSEMONT, IL 60018

WARE MALCOMB

CHI14-0272-00
06.17.2015
07.22.2015 (REV)



DIRECTIONAL SIGN (vertical)
Single sided aluminum sign panel with reflective vinyl graphics (TYP.).

Signs may be wall mounted or ground mounted with a dark grey aluminum post and concrete footing as required.

Standard Sizes:
24" x 48"
32" x 64"
48" x 96"



DIRECTIONAL SIGN (horizontal)
Single sided aluminum sign panel with reflective vinyl graphics (TYP.).

Signs may be wall mounted or ground mounted with a dark grey aluminum post and concrete footing as required.

Standard Sizes:
24" x 48"
32" x 64"
48" x 96"

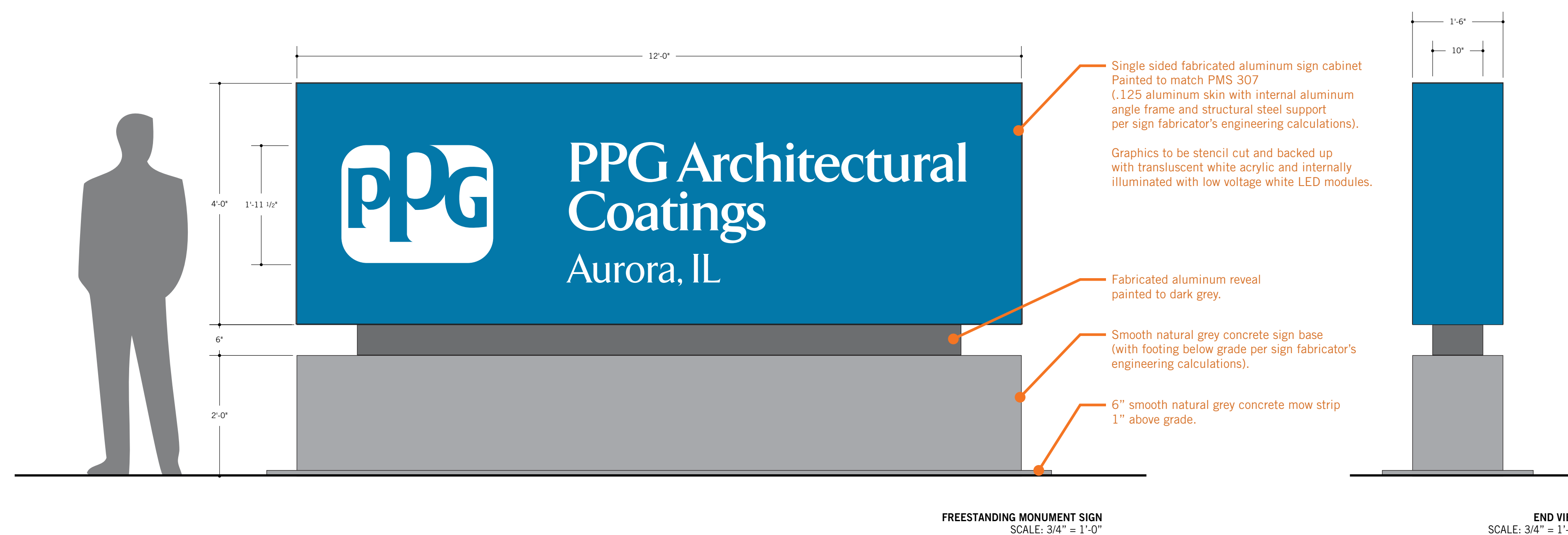


INFO SIGN (square)
Single sided aluminum sign panel with reflective vinyl graphics (TYP.).

Signs may be wall mounted or ground mounted with a dark grey aluminum post and concrete footing as required.

Standard Sizes:
24" x 48"
32" x 64"
48" x 96"

ON-SITE SIGNAGE (TYPICAL)
SCALE: 3/4" = 1'-0"



DEERPATH COMMERCE CENTER
AURORA, IL

ELEVATIONS
Signage Program

OWNER
CONOR COMMERCIAL REAL ESTATE
9550 WEST HIGGINS ROAD
ROSEMONT, IL 60018

PETITIONER:
CONOR COMMERCIAL REAL ESTATE
9550 WEST HIGGINS ROAD
ROSEMONT, IL 60018

WARE MALCOMB

CHI14-0272-00
06.17.2015
07.22.2015 (REV)