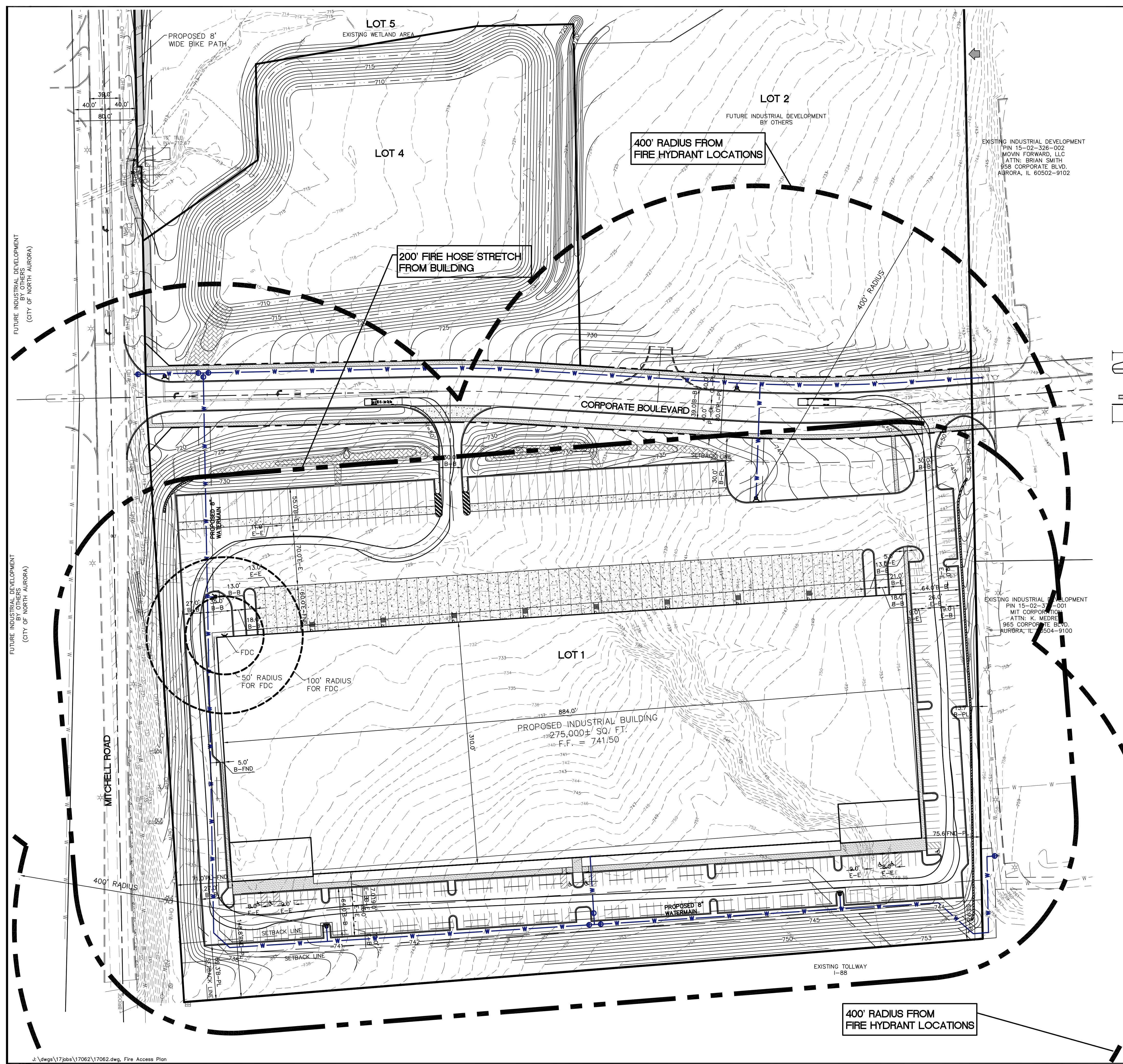
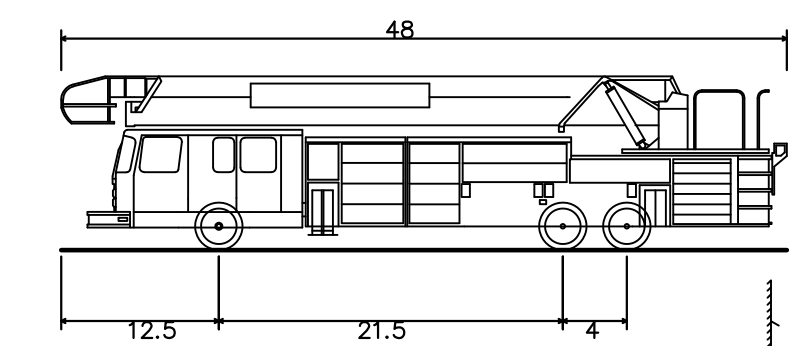
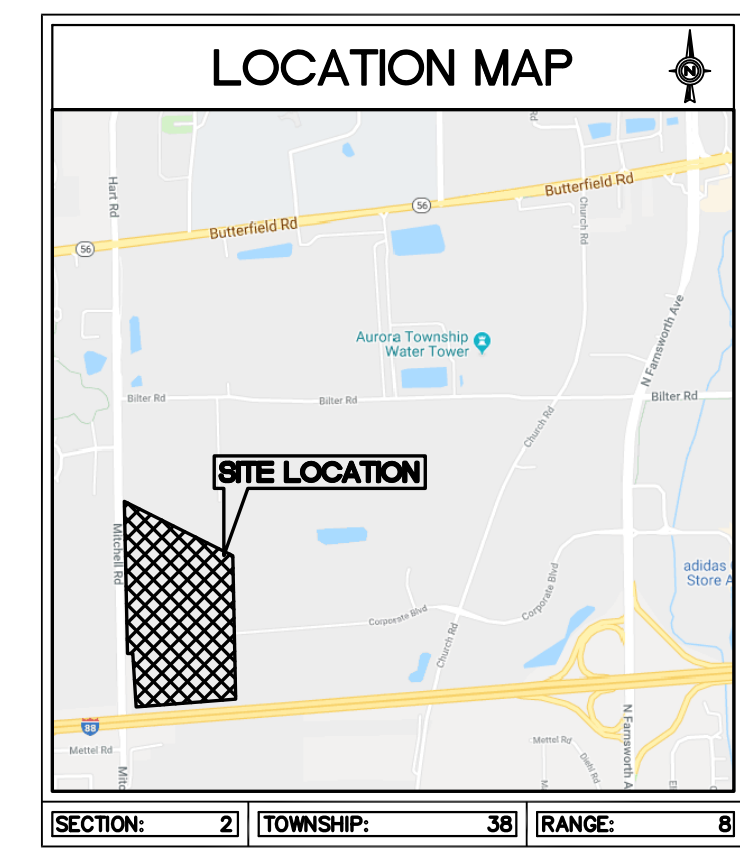


# FIRE ACCESS PLAN FOR MITCHELL ROAD INDUSTRIAL PARK (LOTS 1 AND 4)

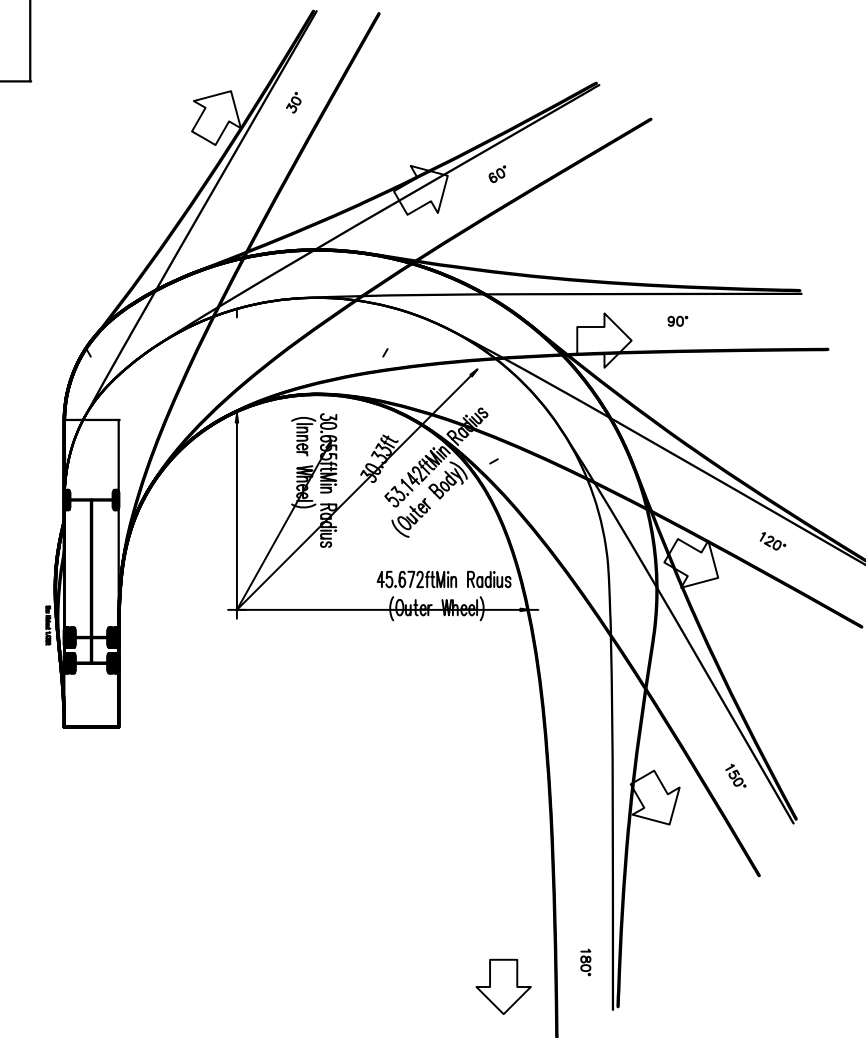


### LEGEND

EXISTING	DESCRIPTION	PROPOSED
⊙	GATCH BASIN	⊙
⊙	INLET	⊙
⊙	STORM MANHOLE	⊙
⊙	SANITARY MANHOLE	⊙
⊙	VALVE VAULT	⊙
⊙	FIRE HYDRANT	⊙
⊙	FLARED END SECTION	⊙
⊙	ELECTRICAL POWER POLE	⊙
⊙	OVERHEAD ELECTRIC WIRES	⊙
⊙	TRANSFORMER PAD	⊙
⊙	LIGHT POLE	⊙
⊙	SIGN	⊙
⊙	BOLLARD POLE	⊙
⊙	WATER MAIN	⊙
⊙	GAS MAIN	⊙
⊙	ELECTRIC LINE	⊙
⊙	TELEPHONE LINE	⊙
⊙	CABLE TV LINE	⊙
⊙	SANITARY SEWER	⊙
⊙	STORM SEWER	⊙
⊙	CONIFEROUS TREE W/DIAMETER	⊙
⊙	DECIDUOUS TREE W/DIAMETER	⊙
⊙	WOOD FENCE	⊙
⊙	CHAIN LINK FENCE	⊙
⊙	METAL GUARDRAIL	⊙
⊙	CONCRETE SURFACE	⊙
⊙	CONTOUR LINE	⊙
⊙	PERVIOUS AREA SLOPE DIRECTION	⊙
⊙	PAVEMENT SLOPE DIRECTION	⊙
⊙	OVERLAND OVERFLOW DIRECTION	⊙



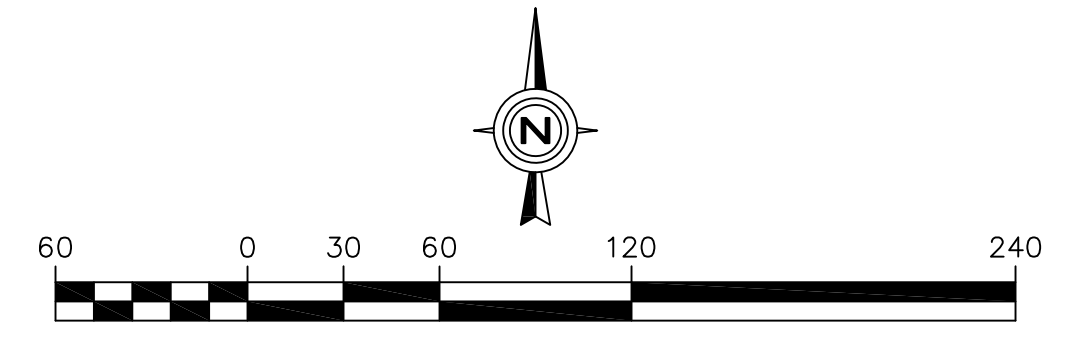
Parameter	Value
Overall Length	48.000ft
Overall Width	8.500ft
Overall Body Height	10.850ft
Min Body Ground Clearance	0.950ft
Track Width	8.500ft
Lock-to-lock time	5.00s
Max Steering Angle (Virtual)	34.00°



### Fire Access Plan Data Table

Description	Value	Unit
a) Building Height	39.00	feet
b) Building Square Footage (typical)	275,000	square feet
c) Building fire suppression information including any proposed use of sprinkler systems, fire alarm systems, whether fire extinguishers are needed: Fire protection system will be an ESFR type system.		
d) General description of business to be conducted within each building including: will there be rack storage in the building, will there be storage of combustible materials over twelve feet in height, clearance of sprinkler heads and stored materials (18 inch minimum): The typical user of these types of building will rack at least a portion of the building as high as 28'. The		

CHECKED BY: B. PERRY DESIGN BY: B. PERRY DRAWN BY: DMORUK DATE: APRIL 20, 2018 SCALE: 1" = 60' PROJECT NO.: 17-062	REVISIONS NO. 8 REVISED PER CLIENT REVIEW AND COA COMMENTS	DATE 7-28-18	Prepared For: <b>The Pizzuti Companies</b> 2001 Butterfield Road, Suite 440 Downers Grove, IL 60515 <b>MITCHELL RD. INDUSTRIAL PARK - AURORA, IL</b> Mitchell Road at Corporate Blvd. Aurora, Illinois
		2631 Ginger Woods Parkway, Suite 100, Aurora, IL 60502 phone 630-575-1800 fax 630-236-9800 www.watermark-engineering.com	
1 of 1		FIRE ACCESS PLAN	



J:\dwgs\17\pba\17062\17062.dwg, Fire Access Plan