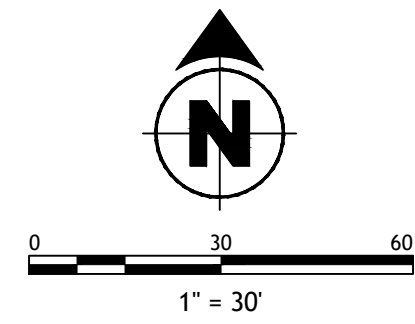


# FINAL PLAN REVISION FOR LOT 2 PAS PLAZA SUBDIVISION

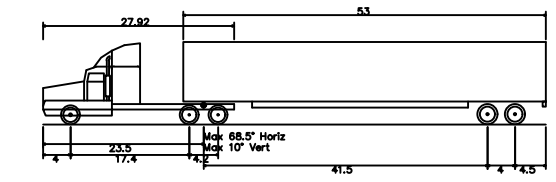


## LEGEND

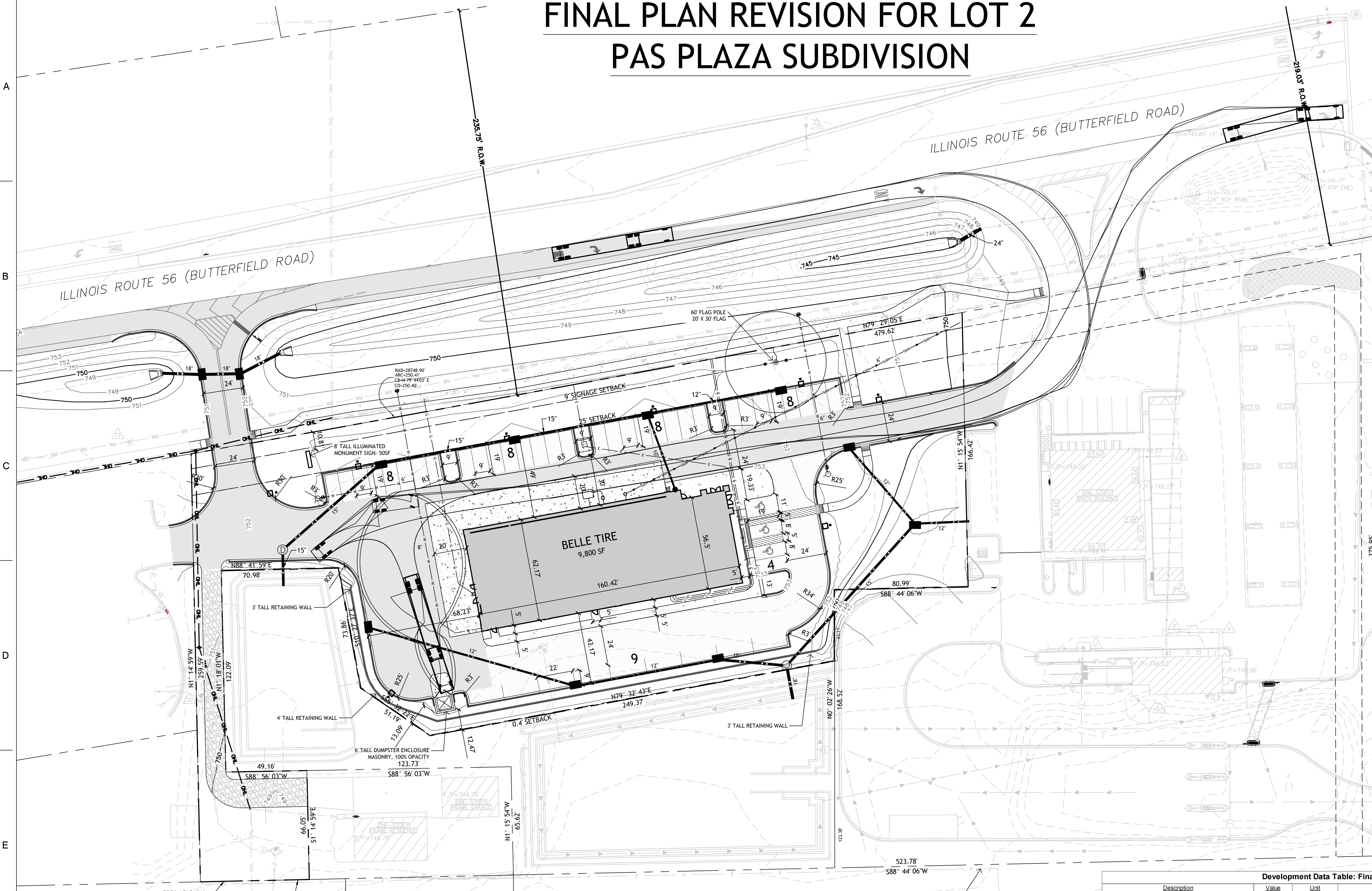
- C-01 HEAVY DUTY ASPHALT PAVEMENT
- C-02 LIGHT DUTY ASPHALT PAVEMENT
- C-03 HEAVY DUTY CONCRETE PAVEMENT
- C-04 CONCRETE SIDEWALK
- C-05 GRAVEL PAVEMENT
- C-07 DEPRESSED CURB & GUTTER
- STORM SEWER
- STORM INLET
- STORM MANHOLE
- SANITARY SEWER
- SANITARY MANHOLE
- CLEANOUT
- WATER LINE
- FIRE PROTECTION LINE
- FIRE DEPARTMENT CONNECTION
- WATER VALVE VAULT
- GAS METER
- UNDERGROUND ELECTRIC TRANSFORMER
- LIGHT POLE
- UNDERGROUND TELEPHONE
- COMMUNICATIONS CABLE
- LIMITS OF GRANULAR BACKFILL

## REFERENCE BENCHMARKS

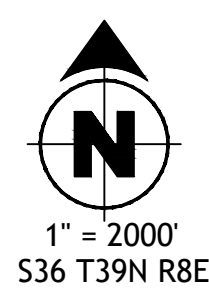
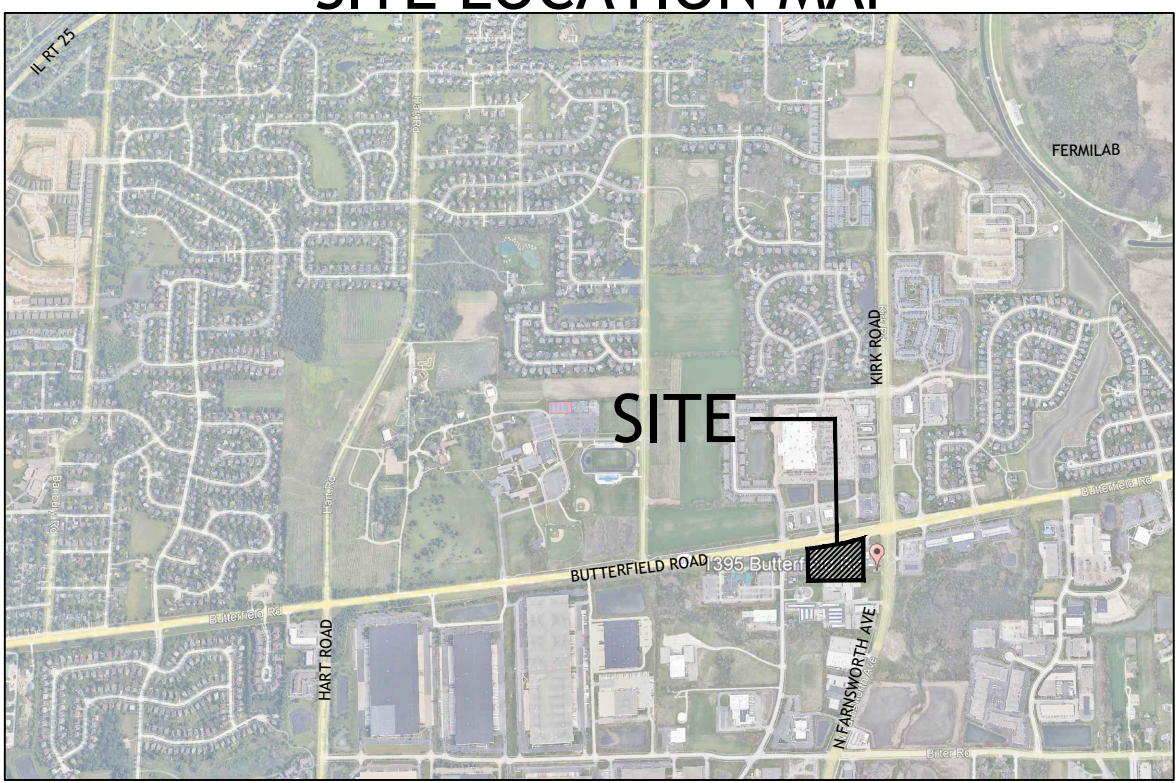
- SITE BENCHMARK #1**  
CUT SQUARE IN BASE OF LIGHT POLE LOCATED IN GRASS APPROXIMATELY 14' SOUTH OF BUTTERFIELD ROAD AND 537' WEST OF NORTH FARNSWORTH ROAD.  
ELEVATION = 750.39 (NAVD88)
- SITE BENCHMARK #2**  
SET CROSS ON BASE OF TRAFFIC SIGNAL LOCATED IN GRASS APPROXIMATELY 45' SOUTH OF BUTTERFIELD ROAD AND 8.5' EAST OF DOWNEN STREET.  
ELEVATION = 756.04 (NAVD88)



IBE-ES Interstate Semi-Trailer  
 Overall Height 7.500ft  
 Overall Width 10.000ft  
 Overall Body Height 4.500ft  
 Max. Body Ground Clearance 13.500ft  
 Max. Trailer Ground Clearance 8.500ft  
 Lock-to-lock Time 8.000ft  
 Curb to Curb Turning Radius 45.000ft



## SITE LOCATION MAP



Development Data Table: Final Plan					
Description	Value	Unit	Description	Value	Unit
a) Tax/Parcel Identification Number(s) (PINs): 12-36-357-003; 12-36-357-004			j) Total Number of Residential Dwelling Units	0	units
b) Proposed land use(s): Vehicle Repair, Minor (2834)			i. Gross Density	0.00	du/acre
			ii. Net Density	0.00	Net Density
			k) Number of Single Family Dwelling Units	0	units
c) Total Property Size	1.916253444	Acres	i. Gross Density	0.00	du/acre
	83472	Square feet	ii. Net Density	0.00	Net Density
	52465	Square feet	iii. Unit Square Footage (average)	0	square feet
	63%	Percent	iv. Bedroom Mix	0%	% 1 bdr
d) Total Lot Coverage			v. Number of Single Family Corner Lots	0	units
	31007	Square feet	vi. Number of Single Family Attached Dwelling Units	0	units
e) Open space / landscaping			i. Gross Density	0.00	du/acre
	37%	Percent	ii. Net Density	0.00	Net Density
f) Land to be dedicated to the School District	0	Acres	iii. Unit Square Footage (average)	0	square feet
	0	Acres	iv. Bedroom Mix	0%	% 1 bdr
g) Land to be dedicated to the Park District			v. Number of Single Family Detached Dwelling Units	0	units
			i. Gross Density	0.00	du/acre
h) Number of parking spaces provided (individually accessible)			ii. Net Density	0.00	Net Density
	48	spaces	iii. Unit Square Footage (average)	0	square feet
i. surface parking lot			iv. Bedroom Mix	0%	% 1 bdr
	48	spaces	v. Number of Multifamily Dwelling Units	0	units
	36	spaces	i. Gross Density	0.00	du/acre
	9	spaces	ii. Net Density	0.00	Net Density
	0	spaces	iii. Unit Square Footage (average)	0	square feet
	0	spaces	iv. Bedroom Mix	0%	% 1 bdr
	3	spaces	v. Efficiency	40%	% 1 bdr
	0	spaces	vi. Efficiency	50%	% 2 bdr
	1	spaces	vii. Efficiency	10%	% 3 bdr
	0	spaces	viii. Efficiency	0%	% 3 bdr
j) Number of buildings			i. Number of stories	1	stories
	9800	square feet	ii. Building Square Footage (typical)	9800	square feet
	2081	square feet	iii. Square Footage of retail floor area	2081	square feet
	9800	square feet	iv. First Floor Building Square Footage (typical)	9800	square feet

W:\Shared\Projects\Belle Tire\BT\_IL\_Aurora\_Butterfield\_23-140-5\_Disciplines-Design\Civil\CADD\FFP-Final Site Plan.dwg // 8/14/2023 1:19:58 PM // ferro

PETITIONER:  
**CHRISTOPHER ENRIGHT ARCHITECTS**  
 A PROFESSIONAL CORPORATION

628 E. Parent Avenue  
 Suite 100  
 Royal Oak, MI 48067  
 248.258.6485 (O)  
 248.330.9395 (C)  
 cenright@enrightarchitects.com

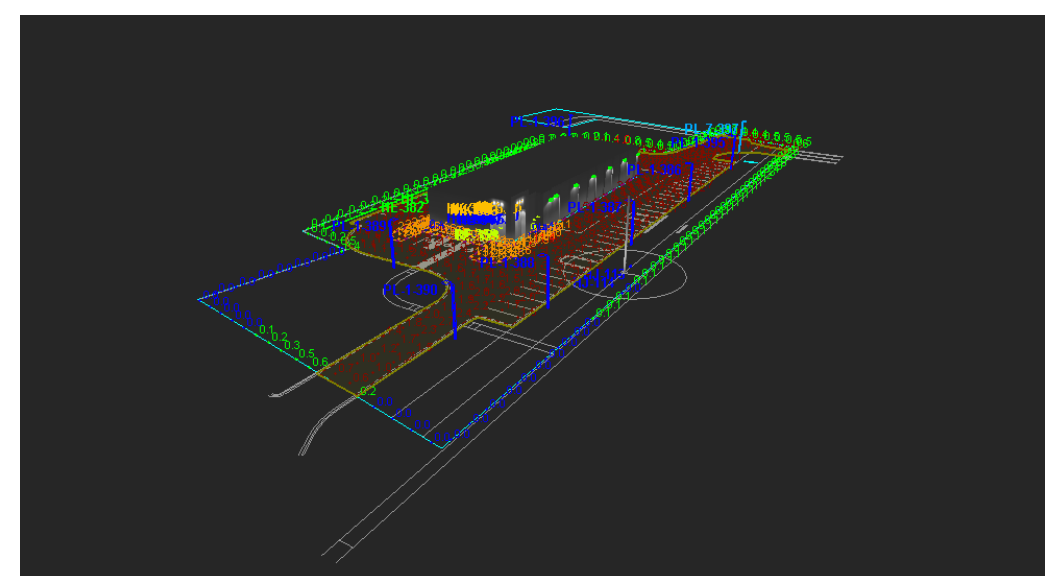
Project:  
**BELLE TIRE**  
 AURORA, IL  
 XXXX BUTTERFIELD RD  
 AURORA, IL 60502

Sheet:  
**FINAL PLAN**

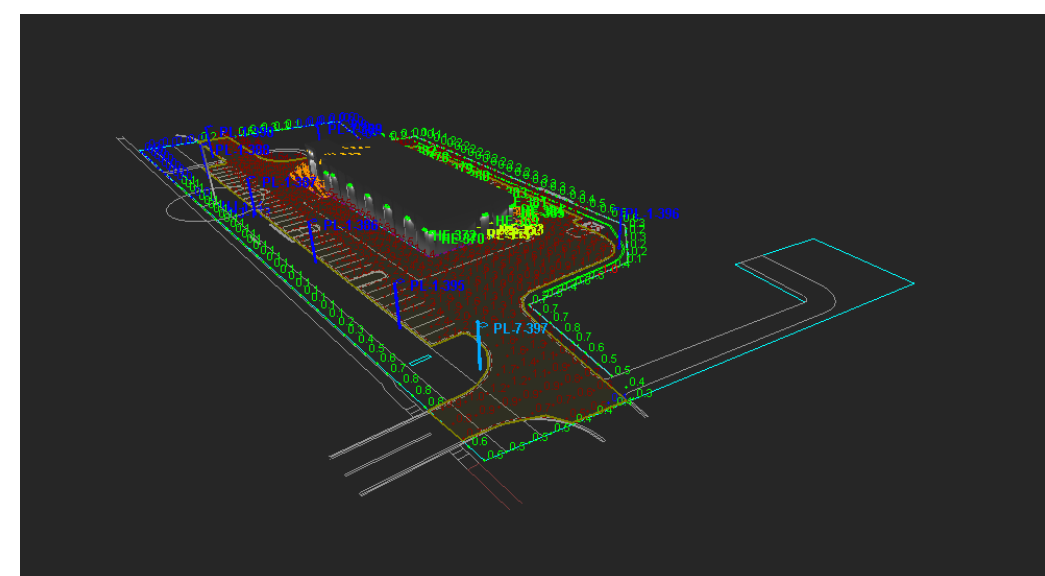
Issued for:  
 2023.06.14 CITY / IDOT SUBMITTAL  
 2023.07.07 CITY RESUBMITTAL  
 2023.08.04 CITY RESUBMITTAL

Project Number:  
**23-140**  
 Sheet Number:  
**FP-1**

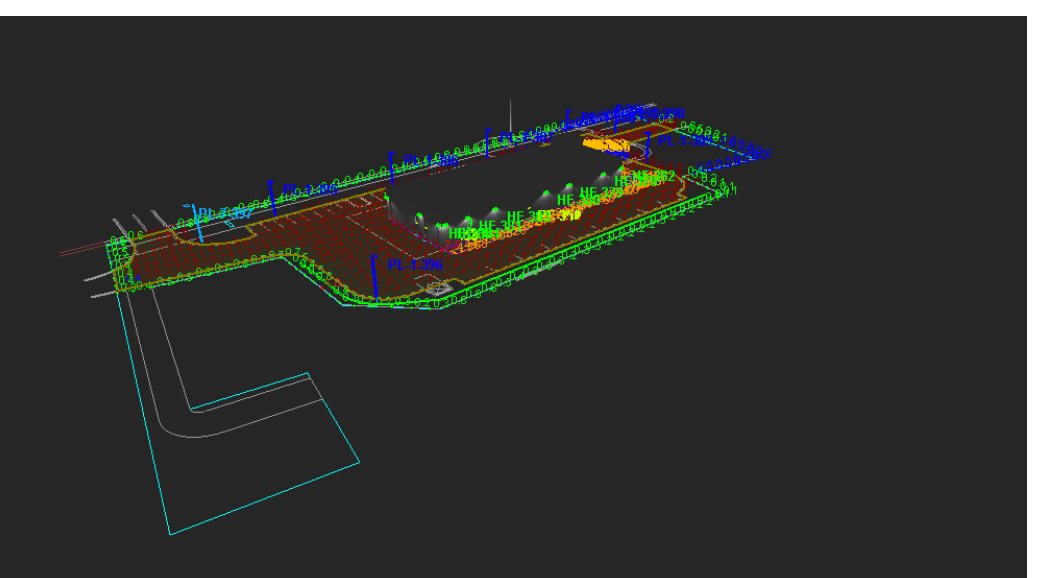




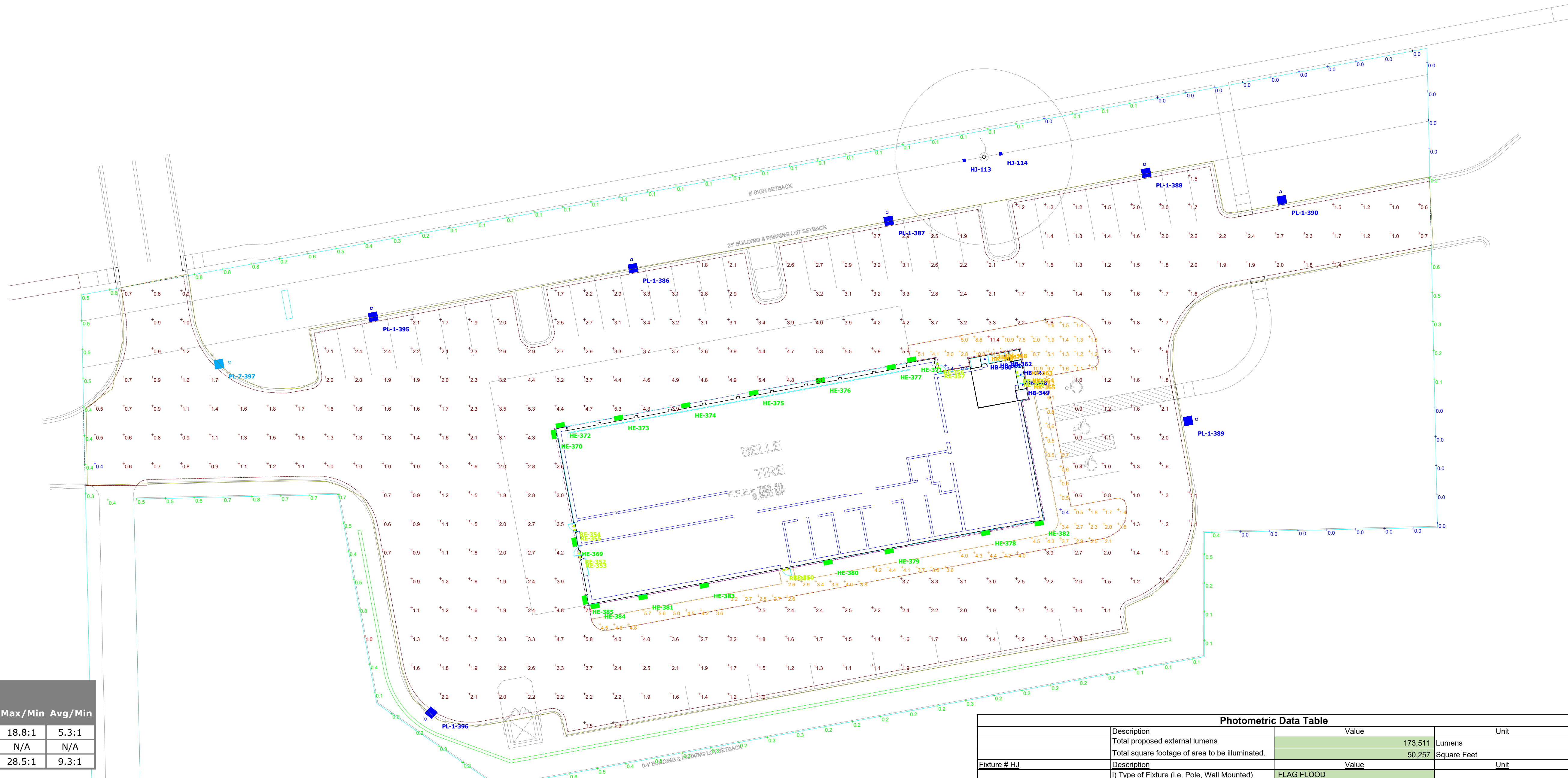
RENDERED PERSPECTIVE VIEW 1



RENDERED PERSPECTIVE VIEW 2



RENDERED PERSPECTIVE VIEW 3



Plan View  
Scale - 1" = 20ft

Power Statistics				
Description	# Luminaires	Total Watts	Area	Density
WHOLE SITE	37	1659.0 W	50256.8 ft <sup>2</sup>	0.0 W/ft <sup>2</sup>

Statistics						
Description	Symbol	Avg	Max	Min	Max/Min	Avg/Min
PARKING & CIRCULATION	+	2.1 fc	7.5 fc	0.4 fc	18.8:1	5.3:1
PROPERTY ADJ	+	0.3 fc	1.0 fc	0.0 fc	N/A	N/A
BUILDING ADJACENT SIDEWALK	+	3.7 fc	11.4 fc	0.4 fc	28.5:1	9.3:1

Schedule											
Symbol	Label	Image	QTY	Manufacturer	Catalog	Description	Number Lamps	Lamp Output	LLF	Input Power	Polar Plot
○	HB		6	WILLIAMS INDOOR	60R-TL-L20-835-DIM-UVW-OF-CS-WET-CC	6" RND RECESSED LED CAST HOUSING C DOWNLIGHT OPEN SEMI-SPEC SPRUN ALUMINUM REFLECTOR (WIDE)	1	1699	0.9	19	
▬	HE		17	NLS Lighting LLC	NV-W-T4-16L-7-40K-UNV	LED LUMINAIRE	1	4649	0.9	37	
▬	HJ		2	NLS LIGHTING	NV-F2-30-32L-80W-40K	LED LUMINAIRE, 30A° NEMA-800mA	1	9657	0.9	80	
○	HK		6	Troy CSL Lighting Inc	LBLED	LS SERIES LED BULLET 25DEG	1	739	0.9	14	
□	PL-1		7	NLS Lighting	NV-1-T4-48L-7-40K-UNV-HSS	T4 OPTICS WITH BLACK HSS	1	6866	0.9	104	
□	PL-7		1	NLS Lighting, LLC	NV-1-T5-48L-7-40K	T5 silicone optics	1	12474	0.9	104	
□	RE		0	BEST LIGHTING	LED R1 12 LED	MOLDED WHITE PLASTIC HOUSING, TWO MOLDED WHITE PLASTIC SWIVEL HEAD ASSEMBLIES, EACH HEAD ASSEMBLY CONSISTS OF: MOLDED WHITE PLASTIC HOUSING, ONE CIRCUIT BOARD WITH 12 LEDs, MOLDED PLASTIC REFLECTOR WITH SPECULAR FINISH AND ONE APERTURE PER LED, CLEAR PRISMATIC PLASTIC LENS, ONLY ONE HEAD ASSEMBLY ENERGIZED FOR THIS TEST.	12	5	1	0.788	

- NOTES**
- POLE MOUNT LUMINAIRES ARE INTENDED TO BE PLACED ON TOP OF 3'-0" TALL PIER BASE (25' OVERALL HEIGHT). PIER BASES OMITTED IN STUDY.
  - TYPE RE REMOTE EMERGENCY HEADS ARE SHOWN FOR REFERENCE, BUT ARE NOT TURNED ON IN NORMAL CALCULATIONS
  - CALCULATION GRID POINTS SET AT 10'-0" O.C.
  - PRO-TECH IS NEITHER LICENSED NOR INSURED TO CERTIFY CODE COMPLIANCE. AS SUCH, CODE COMPLIANCE REVIEW AND CERTIFICATION IF REQUIRED, TO BE PROVIDED BY OTHERS
  - OBSTRUCTIONS, CHANGES TO REFLECTANCE VALUES, FIXTURE TYPE, LOCATIONS, LIGHT LOSS FACTORS, LUMEN OUTPUT OR DIMENSIONAL DATA WILL AFFECT ILLUMINATION LEVELS
  - PHOTOMETRIC MODELS ARE A MATHEMATICAL APPROXIMATION OF REAL-WORLD LIGHTING APPLICATION RESULTS AND CANNOT ACCOUNT FOR VARIANCES IN TERRAIN, LANDSCAPE, OBSTRUCTIONS OR ATMOSPHERIC CONDITIONS

Photometric Data Table		
Description	Value	Unit
Total proposed external lumens	173,511	Lumens
Total square footage of area to be illuminated.	50,257	Square Feet
<b>Fixture # HJ</b>		
Description		
i) Type of Fixture (i.e. Pole, Wall Mounted)	FLAG FLOOD	
ii) manufacturer and model number(s)	TYPE HJ, NLS LIGHTING: NV-F2-30-32-80W-40K7-UNV-TM-ECL-BLK-6 FOOT S.O. WHIP	
iii) Number of these Fixtures Shown	2	Fixtures
iv) Lamp source type (bulb type, i.e. high pressure sodium, LED)	LED	
v) Lumen output and wattage per Fixture	9657/80	Lumen/Wattage
vi) Mounting Height / Fixture Height	1	Feet
<b>Fixture # HB</b>		
Description		
i) Type of Fixture (i.e. Pole, Wall Mounted)	UNDER CANOPY RECESSED DOWNLIGHT	
ii) manufacturer and model number(s)	TYPE HB, H.E. WILLIAMS: 60R-TL-L20/840-DIM-UNV-RW-OF-CS-MWT-WET/CC-N-F1	
iii) Number of these Fixtures Shown	6	Fixtures
iv) Lamp source type (bulb type, i.e. high pressure sodium, LED)	LED	
v) Lumen output and wattage per Fixture	1699/19	Lumen/Wattage
vi) Mounting Height / Fixture Height	18	Feet
<b>Fixture # HE</b>		
Description		
i) Type of Fixture (i.e. Pole, Wall Mounted)	WALL	
ii) manufacturer and model number(s)	TYPE HE, NLS LIGHTING: NV-W-T4-16L-7-40K7-UNV-WM-BLK	
iii) Number of these Fixtures Shown	17	Fixtures
iv) Lamp source type (bulb type, i.e. high pressure sodium, LED)	LED	
v) Lumen output and wattage per Fixture	4649/37	Lumen/Wattage
vi) Mounting Height / Fixture Height	14	Feet
<b>Fixture # HK</b>		
Description		
i) Type of Fixture (i.e. Pole, Wall Mounted)	WALL	
ii) manufacturer and model number(s)	TYPE HE, NLS LIGHTING: NV-W-T4-16L-7-40K7-UNV-WM-BLK	
iii) Number of these Fixtures Shown	6	Fixtures
iv) Lamp source type (bulb type, i.e. high pressure sodium, LED)	LED	
v) Lumen output and wattage per Fixture	739/14	Lumen/Wattage
vi) Mounting Height / Fixture Height	24	Feet
<b>Fixture # PL-1</b>		
Description		
i) Type of Fixture (i.e. Pole, Wall Mounted)	POLE	
ii) manufacturer and model number(s)	TYPE PL-1, NLS LIGHTING: LUMINAIRE: NV-1-T4-48L-7-40K7-UNV-DPS3-BLK-HSS POLE: SSSP-22-45-7G-12BC-SGL-BLK-136	
iii) Number of these Fixtures Shown	7	Fixtures
iv) Lamp source type (bulb type, i.e. high pressure sodium, LED)	LED	
v) Lumen output and wattage per Fixture	6866/104	Lumen/Wattage
vi) Mounting Height / Fixture Height	25	Feet
<b>Fixture # PL-7</b>		
Description		
i) Type of Fixture (i.e. Pole, Wall Mounted)	POLE	
ii) manufacturer and model number(s)	TYPE PL-7, NLS LIGHTING: LUMINAIRE: NV-1-T5-48L-7-40K7-UNV-DPS3-BLK POLE: SSSP-22-45-7G-12BC-SGL-BLK-136	
iii) Number of these Fixtures Shown	1	Fixtures
iv) Lamp source type (bulb type, i.e. high pressure sodium, LED)	LED	
v) Lumen output and wattage per Fixture	12474/104	Lumen/Wattage
vi) Mounting Height / Fixture Height	25	Feet