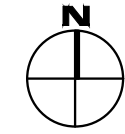
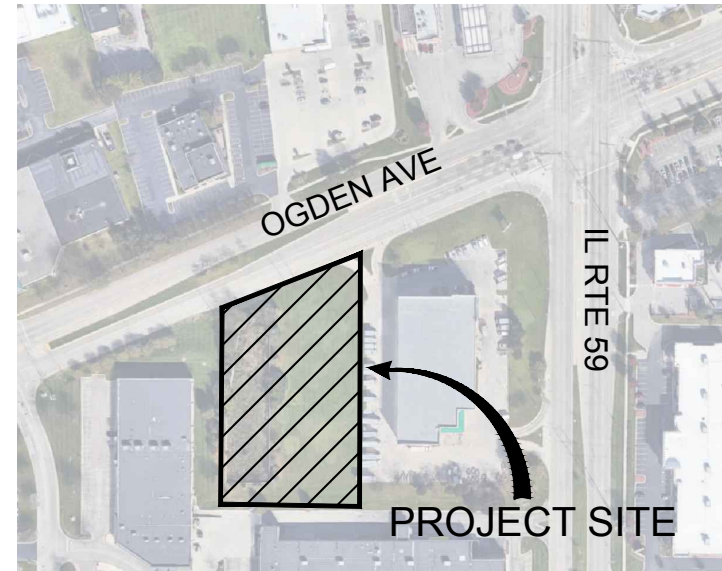
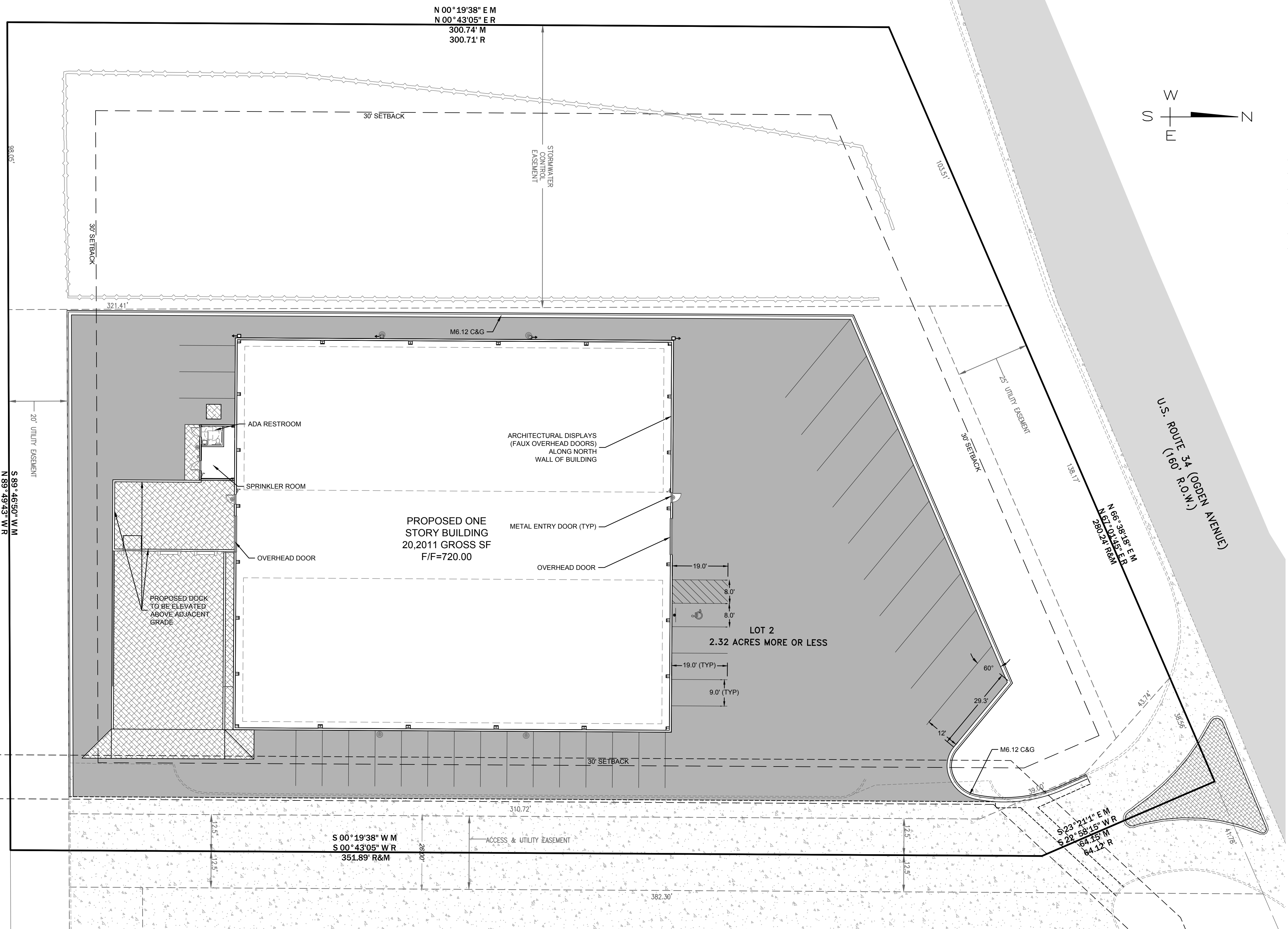


FINAL PLAN FOR LOT 2, U-HAUL CENTER OF AURORA



LOCATION MAP

DEVELOPMENT DATA TABLE:						
FINAL PLAN - LOT 2 U-HAUL CENTER OF AURORA						
Description	Value	Unit	Description	Value	Unit	
a) Tax/Parcel Identification Number(s) (PINs): 07-28-201-018			e) Total Number of Residential Dwelling Units	0	units	
b) Total Property Size	2.320	Acres	i. Gross Density	N/A	du/acre	
	101,059	Square Feet	ii. Net Density	N/A	Net Density	
c) Total Lot Coverage	101,059	Square Feet	f) Number of Single Family Dwelling Units	0	units	
	100%	Percent	i. Gross Density	N/A	du/acre	
	57,090	Square Feet	ii. Net Density	N/A	Net Density	
	56%	Percent	iii. Unit Square Footage (average)	N/A	square feet	
i. buildings and pavement	43,969	Square Feet	iv. Bedroom Mix	N/A	% 1 bdr	
	44%	Percent		N/A	% 2 bdr	
ii. Open space/landscaping				N/A	% 3 bdr	
				N/A	% 4 bdr	
b) Proposed land use(s): Commercial building and associated parking			g) Number of Single Family Attached Dwelling Units	0	units	
c) Number of parking spaces provided	20	spaces	i. Gross Density	N/A	du/acre	
	i. perpendicular	19	spaces	ii. Net Density	N/A	Net Density
	ii. Parallel	0	spaces	iii. Unit Square Footage (average)	N/A	square feet
	iii. Angled	0	spaces	iv. Bedroom Mix	N/A	% 1 bdr
	iv. Handicapped	1	spaces		N/A	% 2 bdr
	v. enclosed	0	spaces		N/A	% 3 bdr
d) Number of buildings	0	spaces	h) Number of Multifamily Dwelling Units	0	units	
	0	racks	i. Gross Density	N/A	du/acre	
	1	stories	ii. Net Density	N/A	Net Density	
	i. Number of stories	1	stories	iii. Unit Square Footage (average)	N/A	square feet
ii. Building Square Footage (average)	20,211	square feet	iv. Bedroom Mix	N/A	% 1 bdr	
iii. Gross Floor Area of commercial use	20,211	GFA		N/A	% 2 bdr	
				N/A	% 3 bdr	
			i) Land to be dedicated to the School District	0	Acres	
			j) Land to be dedicated to the Park District	0	Acres	



Civil Engineering & Land Development Consulting

26316 Mapleview Drive
Plainfield, IL 60585
815.577.1707 T 815.577.2595 F
www.cookengr.com

COOK ENGINEERING GROUP

REVISION DESCRIPTION	DATE
PER ARCHITECT PLANS & CITY PRE-APP REVIEW	11/01/2022
PER COA APP. COMPLETENESS REVIEW (12/01/22)	12/22/2022

**FINAL PLAN FOR LOT 2
U-HAUL CENTER OF AURORA**

**U-HAUL MOVING & STORAGE
OF FOX VALLEY
SWC IL RTE 59 & US RTE 34 AURORA, IL**

PREPARED FOR
UHC OF CHICAGO W SUBURBS
1854 DOUGLAS ROAD
MONTGOMERY, IL 60583
312.576.4581

MR. RICK ROTTWEILER

CEG JOB NUMBER
2022-116

SCALE: 1" = 20'

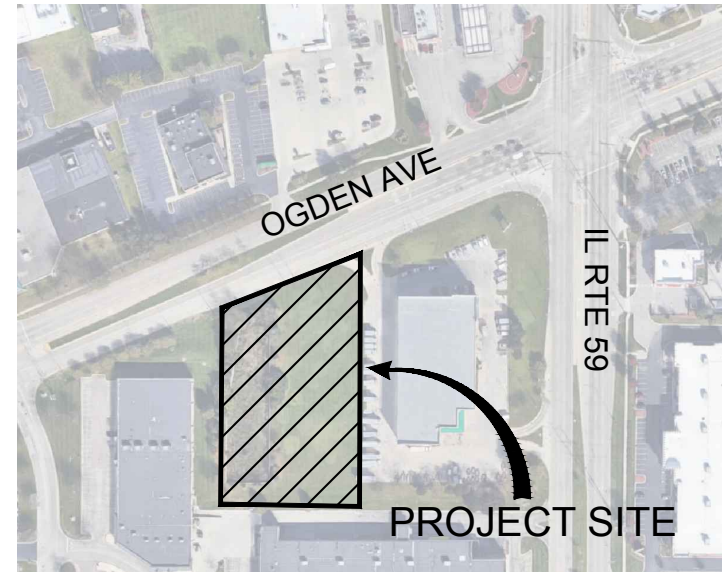
DRAWN BY: GRC

CHECKED BY: MDC

DATE: 07/08/2022

SHEET: 1 of 1

© Copyright, 2022

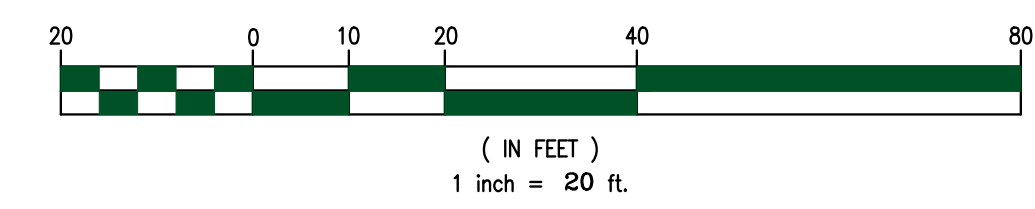
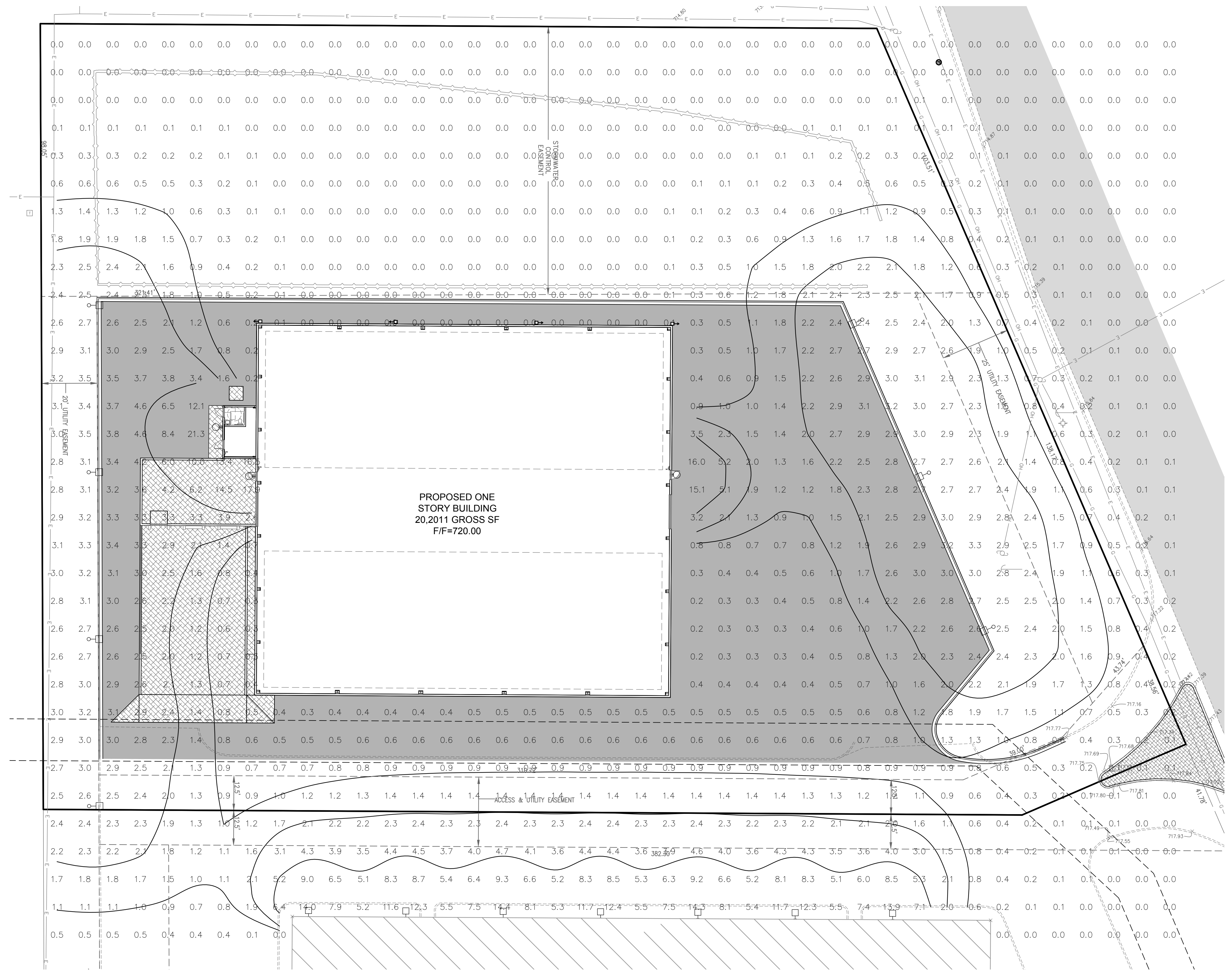


PHOTOMETRIC PLAN FOR LOT 2, U-HAUL CENTER OF AURORA

LOCATION MAP

LUMINAIRE SCHEDULE								
CALLOUT	SYMBOL	LAMP	DESCRIPTION	MODEL	MOUNTING	VOLTS	DEFAULT ELEVATION	QUANTITY
E-W		(240) (240) 4000K CCT, 70 CRI LEDs	WALLPACK DEDICATED CCT	COOPER LIGHTING SOLUTIONS - LUMARK (FORMERLY EATON), WPMLD25B	WALL	120V 1P 2W	16'	7
P		(84) (84) 5000K CCT, 70 CRI LEDs	RIDGEVIEW LED AREA/SITE LUMINAIRE(4) LIGHTBARS WITH AccuLED OPTICS - TYPE 5 SQUARE MEDIUM	COOPER LIGHTING SOLUTIONS - LUMARK (FORMERLY EATON), LDRV-5MQ-E04-E-7050	POLE	120V 1P 2W	20'	7
W		(240) (240) 4000K CCT, 70 CRI LEDs	WALLPACK DEDICATED CCT	COOPER LIGHTING SOLUTIONS - LUMARK (FORMERLY EATON), WPMLD25B	WALL	120V 1P 2W	10'	3

GENERAL PHOTOMETRIC SCHEDULE	
MAXIMUM FOOT-CANDLES	21.3
AVERAGE FOOT-CANDLES	1.45
MINIMUM FOOT-CANDLES	0.0
MAXIMUM TO MINIMUM FC RATIO	9256.32
AVERAGE TO MINIMUM FC RATIO	630.13



Civil Engineering & Land Development Consulting
26316 Mapleview Drive
Plainfield, IL 60585
815.577.1707 T 815.577.2895 F
www.cookengr.com

#	DATE	REVISION DESCRIPTION
1	11/01/2022	PER ARCHITECT PLANS & CITY PRE-APP REVIEW
2	12/22/2022	PER COA APP. COMPLETENESS REVIEW (12/01/22)
3		
4		
5		
6		
7		
8		
9		
10		

**PHOTOMETRIC PLAN FOR LOT 2
U-HAUL CENTER OF AURORA**
U-HAUL MOVING & STORAGE
OF FOX VALLEY
SWC IL RTE 59 & US RTE 34 AURORA, IL

PREPARED FOR
UHC OF CHICAGO W SUBURBS
1854 DOUGLAS ROAD
MONTGOMERY, IL 60583
312.576.4581

MR. RICK ROTTWEILER

CEG JOB NUMBER
2022-116

SCALE: 1" = 20'

DRAWN BY: GRC

CHECKED BY: MDC

DATE: 07/08/2022

SHEET: 1 of 1