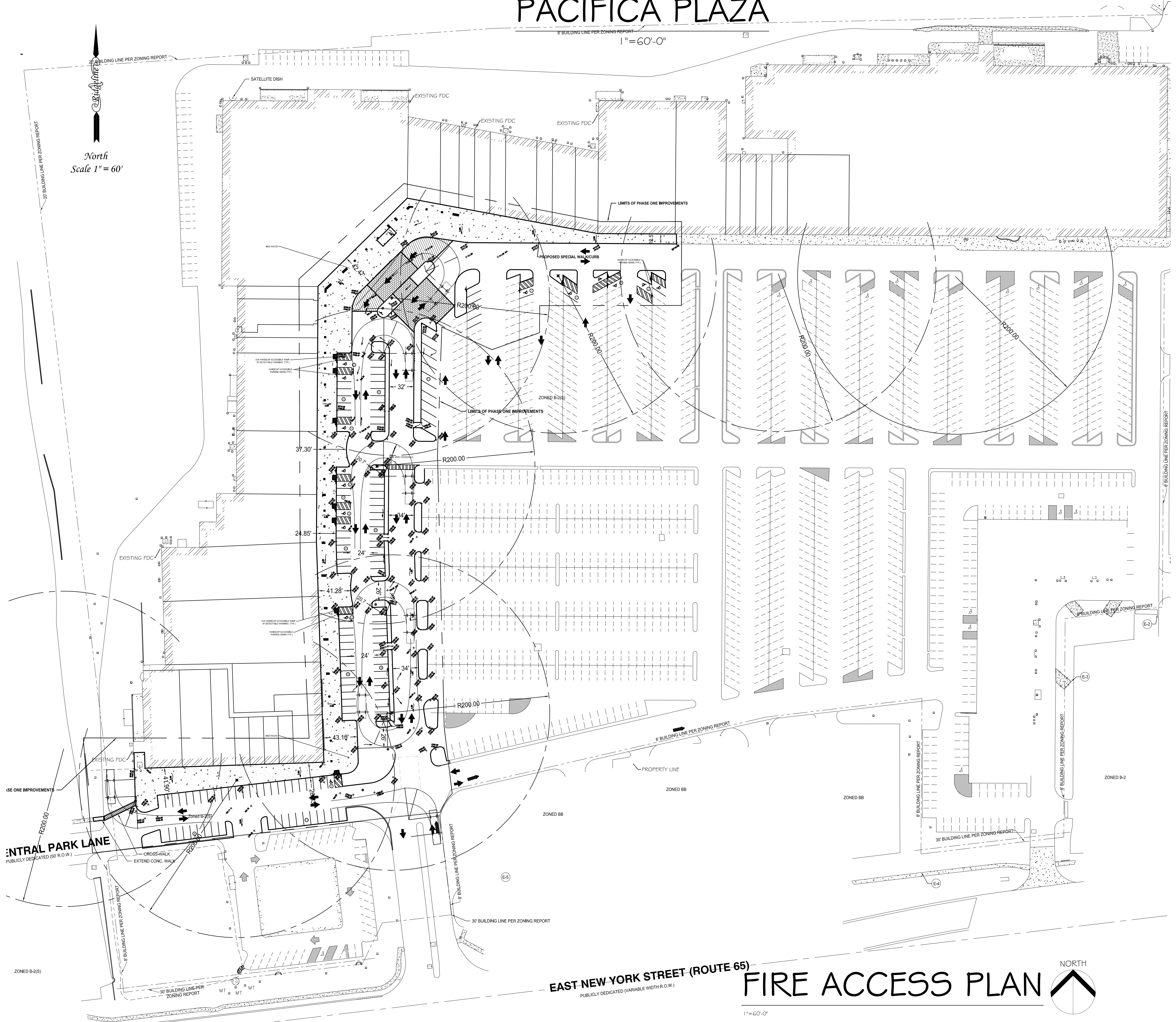
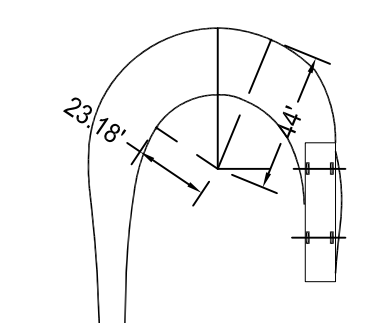


FIRE ACCESS PLAN PHASE I FOR PACIFICA PLAZA



| FIRE ACCESS PLAN DATA TABLE | | |
|---|---------|------|
| DESCRIPTION | VALUE | UNIT |
| A) BUILDING HEIGHT | 33 | FT |
| B) SQUARE FOOTAGE OF EACH BUILDING | 106,385 | FT |
| C) BUILDING FIRE SUPPRESSION INFORMATION INCLUDING ANY PROPOSED USE OF SPRINKLER SYSTEMS, FIRE ALARM SYSTEMS, WHETHER FIRE EXTINGUISHERS ARE NEEDED | | |
| WHOLE PLAZA HAS FIRE ALARM AND FIRE SPRINKLER PROTECTIONS | | |
| D) GENERAL DESCRIPTION OF BUSINESS TO BE CONDUCTED WITHIN EACH BUILDING INCLUDING: WILL THERE BE STACK STORAGE IN THE BUILDING, WILL THERE BE STORAGE OF COMBUSTIBLE MATERIALS OVER TWENTY FEET IN HEIGHT, CLEARANCE OF SPRINKLER HEADS AND STORED MATERIALS (1/8 INCH MINIMUM) | | |
| OTHER THAN PARK TO SHOP GROCERY STORE WHICH HAS A DRY STORAGE USING RACKING SYSTEM. ALL OTHERS HAS MINOR STORAGE AREA AS ACCESSORY USE ONLY. ALL STORAGE SHELVES SHALL BE LIMITED TO 12' HIGH AND MAINFAM MIN. 12" BELOW THE SPRINKLER HEADS. | | |

FIRE ACCESS DATA TABLE
N.T.S.



TRUCK RADIUS FOR E-95 PLATFORM
1:60

| | | | |
|---|---|---|--|
| ARCHITECT: RAY FANG & ASSOCIATES | PROJECT NAME: PACIFICA PLAZA FIRE ACCESS & LANDSCAPING | PROJECT ADDRESS: 4360 E. NEW YORK STREET, AURORA, IL. 60504 | PROJECT NO.: 739 RED OAK DRIVE, BARTLETT, IL. 60103 630-788-5536, HCFANG003@AOL.COM DEVELOPER/OWNER: PACIFIC REALTY |
| DRAWING CONTENTS: FIRE ACCESS PLAN FOR PHASE I PACIFICA PLAZA | | | |
| REVISION LOGS | | | |
| REV. NO. | BY/DATE | DESCRIPTIONS | DATE |
| 0 | RAY 8-2-2018 | FOR PERMIT | 7/19/2018 |
| 1 | RAY 8-27-2018 | FINAL | 7/20/2018 |
| PREPARED BY: | RAY | DATE: | 7/19/2018 |
| REVIEWER: | EDDIE | DATE: | 7/20/2018 |
| APPROVER: | | DATE: | |
| PROJECT NUMBER: | FA-LA-001 | SCALE: | AS SHOWN |
| ARCHITECT STAMP: | | | |
| EXP: 11/20/2018 DRAWING NO.: <h1 style="font-size: 2em;">FA</h1> | | | |

EAST NEW YORK STREET (ROUTE 65) PUBLICLY DEDICATED (VARIABLE WIDTH R.O.W.)

FIRE ACCESS PLAN

