

GENERAL NOTES

- ALL CONSTRUCTION SHALL BE IN ACCORDANCE WITH THE REQUIREMENTS SET FORTH BY INTERNATIONAL BUILDING CODE 2009 AND SHALL CONFORM TO ALL OTHER APPLICABLE MUNICIPAL, STATE, AND FEDERAL REGULATIONS INCLUDING THE ILLINOIS ACCESSIBILITY CODE (1997) AND THE AMERICANS WITH DISABILITIES ACT.
A. GENERAL NOTES
1. ALL CONTRACTORS ARE REQUIRED TO VISIT THE SITE AND BE KNOWLEDGEABLE REGARDING EXISTING CONDITIONS AND THEIR EFFECT ON THE PROPOSED WORK.
B. MISCELLANEOUS AND DEMOLITION NOTES
1. COORDINATE PENETRATIONS AND/OR SLEEVES REQUIRED IN WALLS, FLOORS, CEILING OR ROOFS FOR MECHANICAL AND ELECTRICAL WORK REQUIRED BY ARCHITECTURAL, MECHANICAL, ELECTRICAL, AND PLUMBING DRAWINGS.

STANDARD ABBREVIATIONS

Table with 4 columns of abbreviations and their corresponding full names. Includes terms like AT (ANCHOR BOLT), EXP (EXPANSION), PL (PLATE), and many others.

THE MATERIALS, ABBREVIATIONS, AND DRAFTING SYMBOLS LEGEND ARE EACH AN ALL INCLUSIVE MASTER LIST USED BY THIS FIRM. THE INCLUSION OF THESE LEGENDS INTO THESE DOCUMENTS DOES NOT IMPLY THAT ALL THE SYMBOLS OR MATERIALS INCLUDED IN THESE LEGENDS ARE INCORPORATED INTO THIS PROJECT.

DRAFTING MATERIALS LEGEND

Table showing drafting materials legend items such as DETAIL NUMBER, COLUMN NUMBER, LOCATION ELEVATION, ROOM NUMBER, DOOR NO., NOMINAL THICKNESS, KEYNOTE IDENTIFICATION, WINDOW TYPE IDENTIFICATION, and TOILET ACCESSORY IDENTIFICATION.

Table showing material symbols and their corresponding material names like STEEL, EARTH, CONCRETE, INSULATION, BRICK, WOOD, BLOCKING, CONCRETE MASONRY UNIT, BITUMINOUS CONCRETE, ACOUSTIC CEILING PANEL, GYPSUM WALL BOARD, GRAVEL, and RAKED JOINT.



PROJECT FIRE STATION #10 EMERGENCY GENERATOR 2390 W. ILLINOIS AVENUE AURORA, IL 60506

OWNER CITY OF AURORA 44 E. DOWNER PLACE AURORA, IL 60507

ARCHITECT/ENGINEER KLUBER ARCHITECTS + ENGINEERS 10 S. SHUMWAY AVE. BATAVIA, ILLINOIS 60510 TEL 630-406-1213 FAX 630-406-9472 www.kluberinc.com

REQUIRED CODE COMPLIANCE INFORMATION

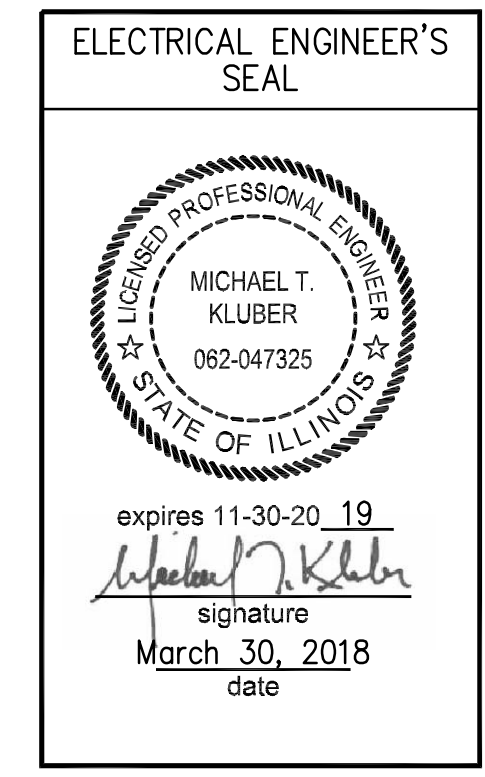
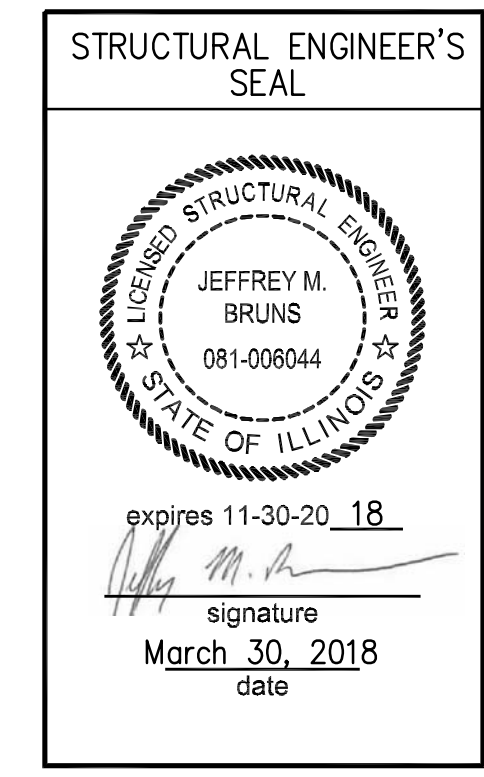
REQUIRED PLAN COVER SHEET INFORMATION FOR REVIEW UNDER 2009 INTERNATIONAL CODES, STATE OF ILLINOIS ACCESSIBILITY CODE, AND THE STATE OF ILLINOIS PLUMBING CODE LOCAL AMENDMENTS TO THE ABOVE CODES

GENERAL STATEMENT OF OVERALL PROJECT SCOPE AND INTENT: PROJECT CONSISTS OF MINOR INTERIOR AND EXTERIOR ALTERATIONS TO ACCOMMODATE A NEW EMERGENCY BACK-UP ELECTRIC GENERATOR TO AN EXISTING SINGLE-STORY FIRE STATION BUILDING. BUILDING COMPONENTS AND SYSTEMS MODIFIED OR REPLACED AS PART OF THE WORK OF THIS PROJECT HAVE BEEN BROUGHT UP TO MEET THE REQUIREMENTS OF THE APPLICABLE CURRENT CODES.

- A. USE AND OCCUPANCY GROUP(S) CLASSIFICATION: MIXED USE; B PER THE ORIGINAL CONSTRUCTION DOCUMENTS.
B. TYPE OF CONSTRUCTION: 5B (UNPROTECTED), PER THE ORIGINAL CONSTRUCTION DOCUMENTS.
C. SQUARE FOOTAGE OF BUILDING: UNCHANGED.
D. OCCUPANT LOAD BASED ON INTERNATIONAL BUILDING CODE: NOT APPLICABLE; USE/OCCUPANCY REMAINS UNCHANGED.

SEALS & CERTIFICATES

I HAVE PREPARED, OR CAUSED TO BE PREPARED UNDER MY DIRECT SUPERVISION, THE ATTACHED PLANS AND SPECIFICATIONS AND STATE THAT TO THE BEST OF MY KNOWLEDGE AND BELIEF, AND TO THE EXTENT OF MY CONTRACTUAL OBLIGATION, THEY ARE IN COMPLIANCE WITH IBC 2009 EDITION, THE ENVIRONMENTAL BARRIERS ACT AND THE ILLINOIS ACCESSIBILITY CODE.



"G" SERIES EXTERIOR PAD "G" SERIES "E" SERIES

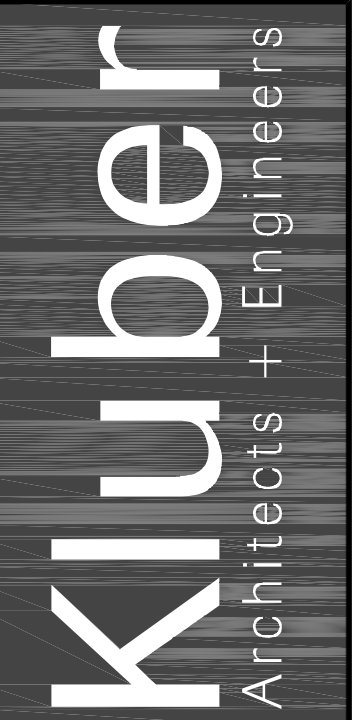
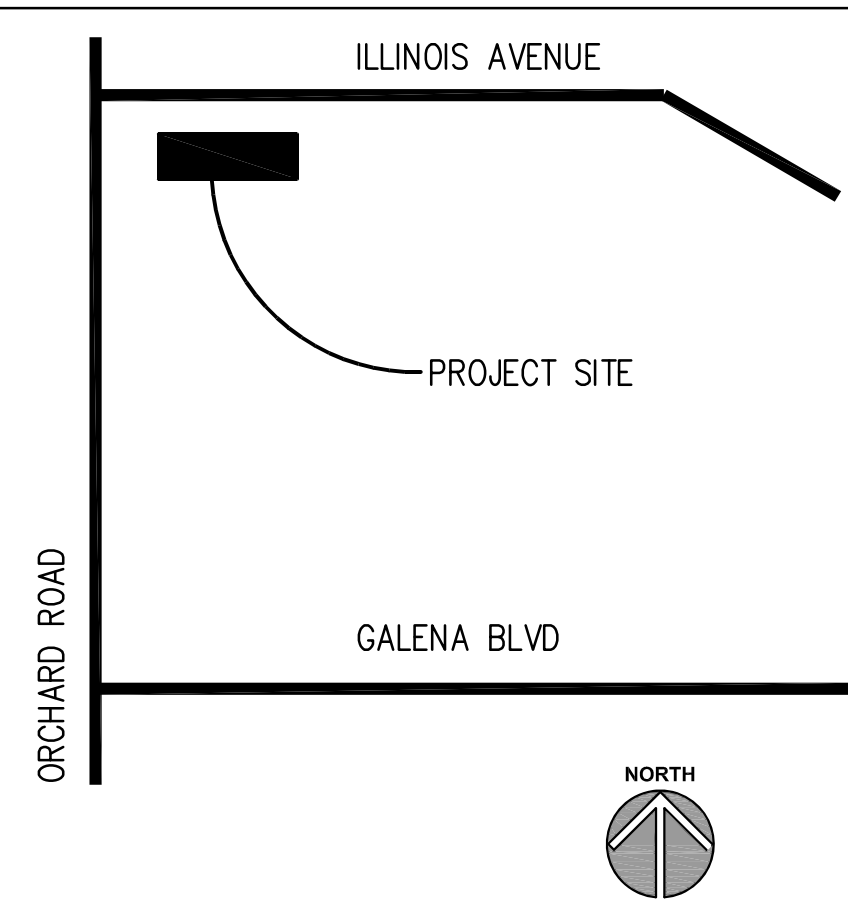
INDEX OF DRAWINGS

- G100 COVER SHEET, GENERAL NOTES, SYMBOLS, & DRAWING INDEX
E310 ELECTRICAL FLOOR PLANS AND DETAILS
E610 ELECTRICAL ONE LINE DIAGRAM AND PANEL SCHEDULES

BUILDING CODE DATA

2009 INTERNATIONAL BUILDING CODE
2009 INTERNATIONAL PLUMBING CODE
2009 INTERNATIONAL MECHANICAL CODE
2009 INTERNATIONAL FUEL AND GAS CODE
2015 INTERNATIONAL ENERGY CONSERVATION CODE
2009 INTERNATIONAL EXISTING BUILDING CODE
2009 INTERNATIONAL FIRE CODE
ILLINOIS ACCESSIBILITY CODE (CURRENT EDITION)
2008 NATIONAL ELECTRICAL CODE
LOCAL AMENDMENTS TO THE ABOVE CODES

LOCATION MAP



Kluber, Inc.
Batavia, Illinois 60510
Tel. 630-406-1213
Gurnee, Illinois 60031
Tel. 847-336-3428
www.kluberinc.com

CITY OF AURORA FIRE STATION #10 EMERGENCY GENERATOR

CITY OF AURORA
44 E. DOWNER PLACE
AURORA, IL 60507

Table with 2 columns: ISSUED, BID & PERMIT DOCUMENTS. Shows a sequence of drawing sheets.

Table with 2 columns: JOB NO., DRAWN, CHECKED, APPROVED, SHEET TITLE, SHEET NUMBER. Includes job number 17-130-1176 and sheet title 'COVER SHEET, GENERAL NOTES, SYMBOLS AND DRAWING INDEX'.

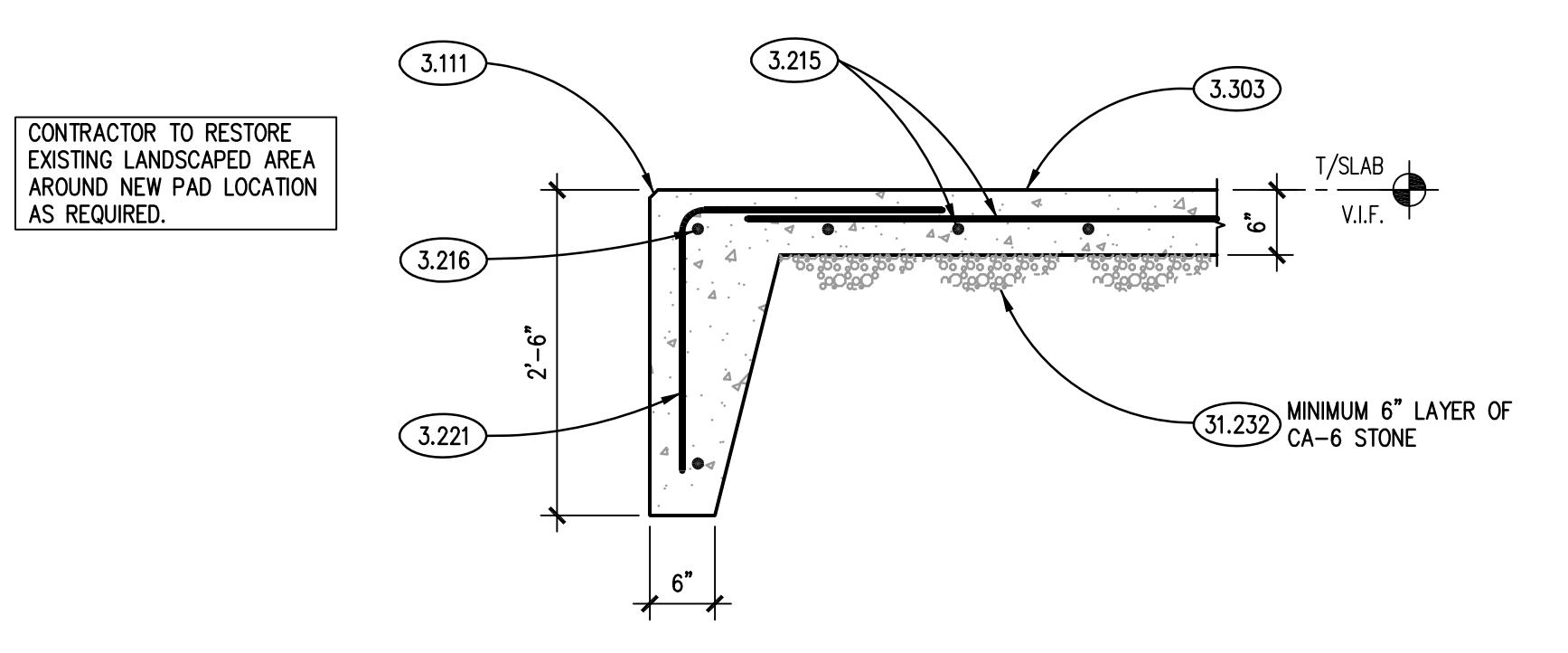
G100

ELECTRICAL SYMBOLS LIST

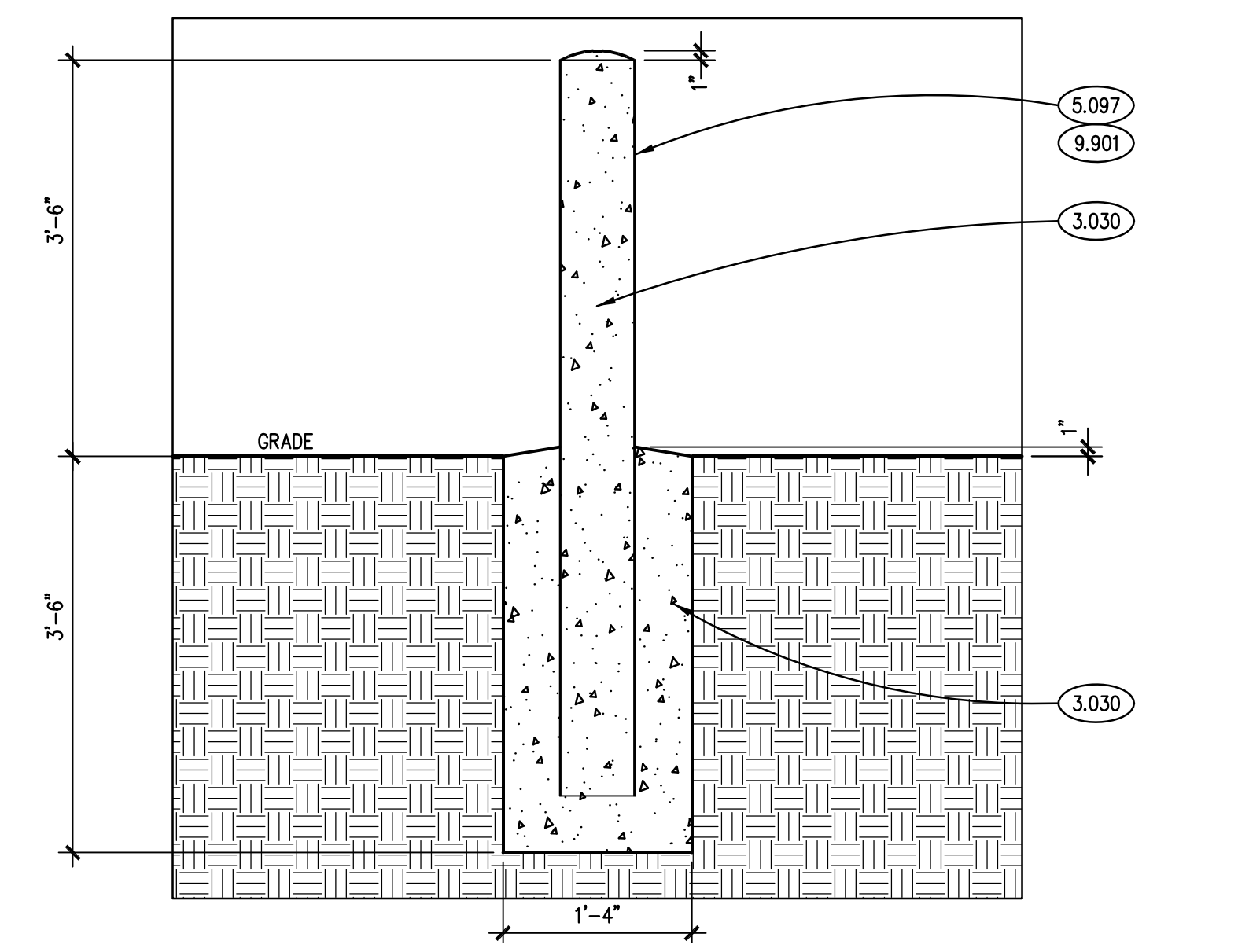
SYMBOL	DESCRIPTION
[RAP]	GENERATOR REMOTE ANNUNCIATOR PANEL.
[Panel]	PANEL 240V & BELOW.
[WP]	GFCI(GROUND FAULT CIRCUIT INTERRUPTER) PROTECTED RECEPTACLE. WP=WEATHER PROOF. 20A 125V 2P 3W GRD. NEMAS-20R. Ø18" AFF EMERGENCY PUSHBUTTON STATION.
[Junction Box]	JUNCTION BOX
[Wiring]	WIRING IN CONDUIT CONCEALED ABOVE CEILING, IN WALL AND UNDER FLOOR OR UNDERGROUND.
[Wiring]	WIRING IN CONDUIT EXPOSED ON CEILING OR WALL.
[Branch Circuit]	BRANCH CIRCUIT WIRING IN CONDUIT HOMERUN TO PANEL. ONE ARROW PER HOMERUN. SLASHES INDICATE NUMBER OF CONDUCTORS.
[Ground]	INDICATES GROUND CONDUCTOR.
[Isolated Ground]	INDICATES ISOLATED GROUND CONDUCTOR.
[Keynote]	KEYNOTE IDENTIFICATION
AF	AMPS FRAME
AFC/AFF	ABOVE FINISH GRADE OR ABOVE FINISH FLOOR
AT	AMPS TRIP
ATS	AUTOMATIC TRANSFER SWITCH
GRS	GALVANIZED RIGID STEEL

KEYNOTES

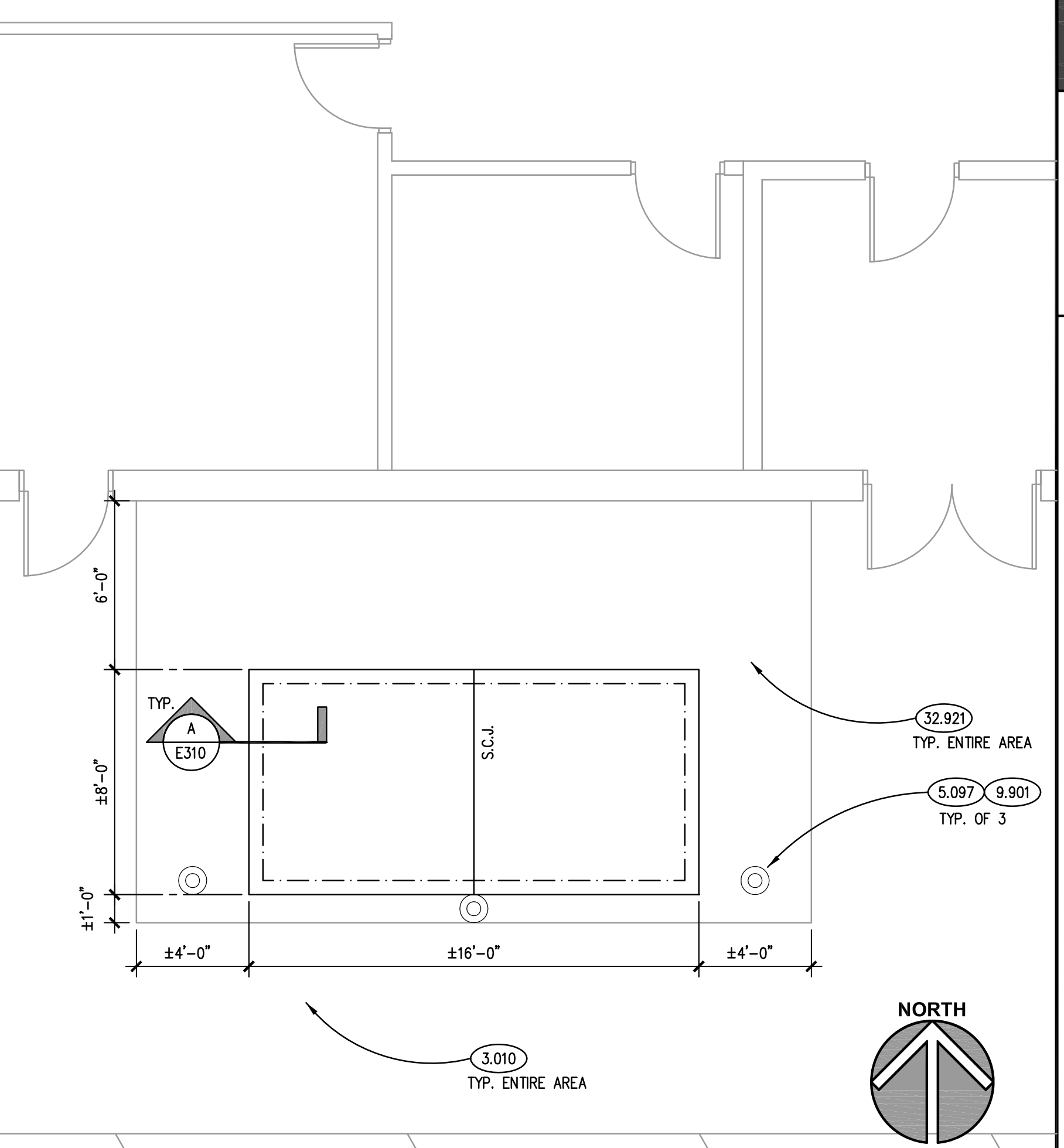
- 3.010 CAST-IN-PLACE CONCRETE: EXISTING SIDEWALK. REMOVE AND REPLACE ANY DAMAGED AREAS CAUSED BY PROPOSED NEW WORK.
- 3.030 CAST-IN-PLACE CONCRETE: REFER TO STRUCTURAL DRAWINGS.
- 3.111 CONCRETE FORMING AND ACCESSORIES: CONTINUOUS 3/4" CHAMFER U.N.O.
- 3.215 CONCRETE REINFORCING: REINFORCING STEEL MAT. #5 @ 12" O.C. EACH WAY U.N.O.
- 3.216 CONCRETE REINFORCING: CONTINUOUS REINFORCING BAR. #5 U.N.O. QUANTITY AS DEPICTED.
- 3.221 CONCRETE REINFORCING: #4 DOMELS @ 1'-0" O.C. HORIZONTAL LEG= 2'-6", VERTICAL LEG= 2'-6" U.N.O.
- 3.303 CAST-IN-PLACE CONCRETE: EXTERIOR SLAB-ON-GRADE. REFER TO SPECIFICATIONS FOR MIX TYPE AND FINISH. REINFORCE WITH WWF-6x6 W2.1 x W2.1. SLOPE FOR DRAINAGE.
- 5.097 METAL FABRICATION: STEEL BOLLARD; 6" NOM. DIA. SCHEDULE 40 PIPE, GALVANIZED; CONCRETE FILLED. COORDINATE LOCATION WITH GENERATOR MFG. DO NOT RESTRICT SERVICE ACCESS. AVOID PLACEMENT IN DOOR SWINGS.
- 9.901 PAINT BOLLARDS AND EXTERIOR CONDUITS WITH ONE COAT OF PRIMER, FOLLOWED BY TWO COATS OF MPI #163 WATERBORNE LIGHT INDUSTRIAL SEM-GLOSS COATING; SAFETY YELLOW COLOR; PRIMER AS RECOMMENDED BY TOP COAT MANUFACTURER FOR SUBSTRATE AND TOP COAT COMPATIBILITY. PREPARE GALVANIZED SURFACES IN ACCORDANCE WITH SSPC-SP1 (SOLVENT CLEANING) AND SSPC-SP2 (HAND TOOL CLEANING).
- 31.232 EXCAVATION FILL: ENGINEERED GRANULAR FILL. ASSUME MINIMUM 24" DEPTH TO ACCOMMODATE REMOVAL OF EXISTING TOP LAYER OF ORGANIC SOILS.
- 32.921 LAWN/GRASSED AREA: SEEDED; RESTORE ENTIRE AREA INDICATED AFTER COMPLETION OF CONSTRUCTION OPERATIONS.



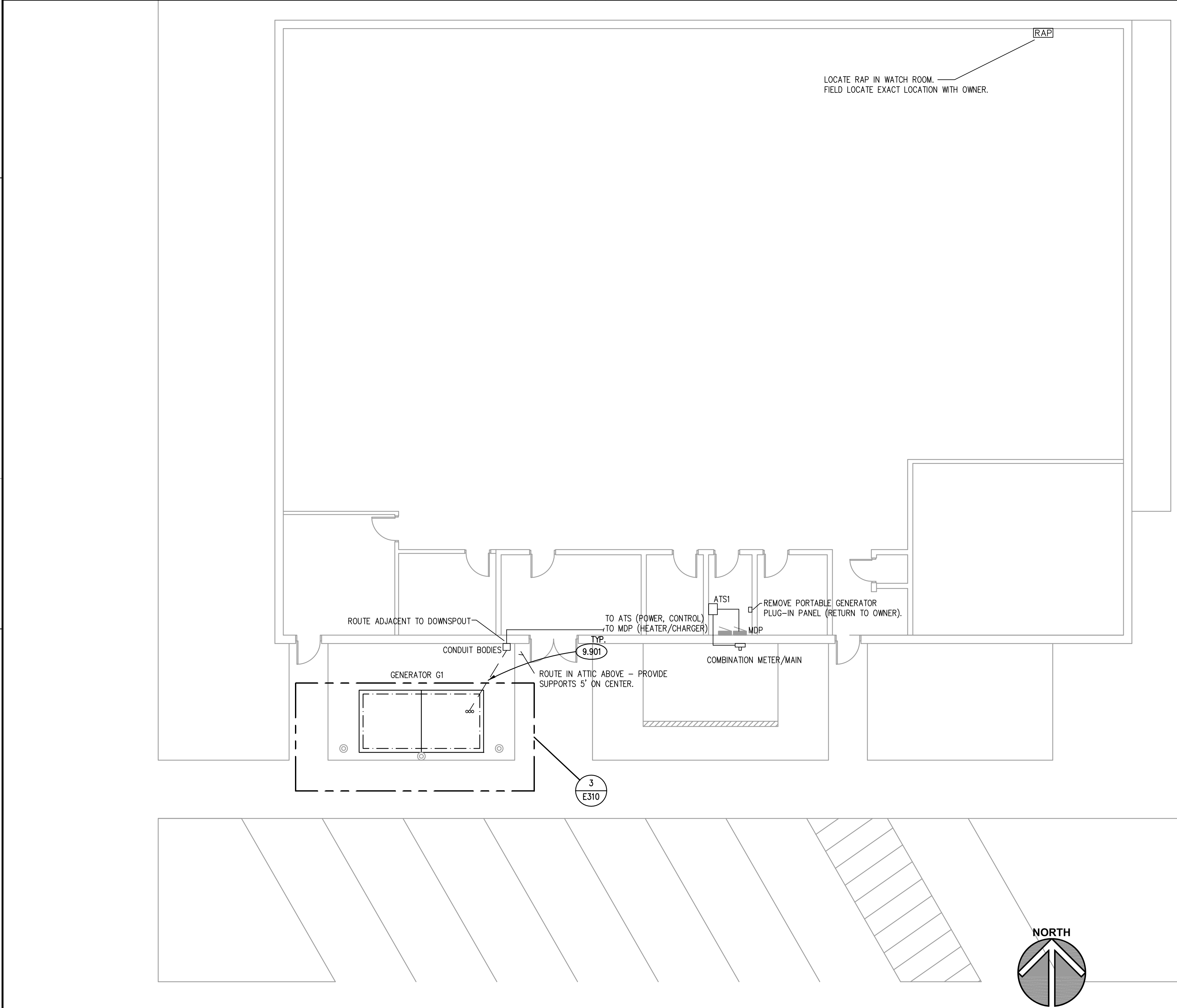
TYPICAL EXTERIOR PAD DETAIL (A) SCALE: 3/4" = 1'-0"



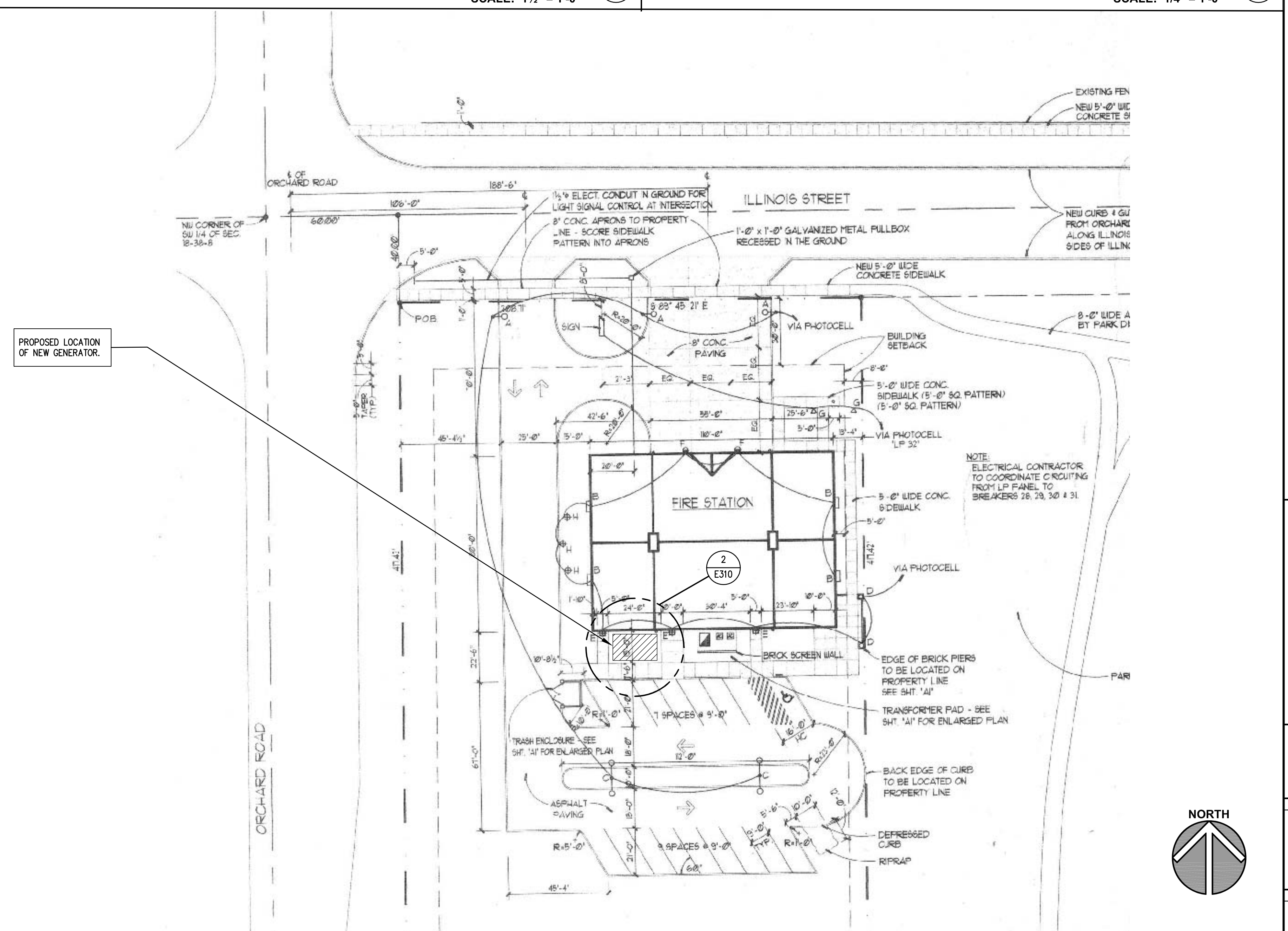
TYPICAL BOLLARD DETAIL (B) SCALE: 1 1/2" = 1'-0"



SITE DETAIL PLAN (3) SCALE: 1/4" = 1'-0"



SITE AND FIRST FLOOR POWER PLAN (2) SCALE: 1/8" = 1'-0"



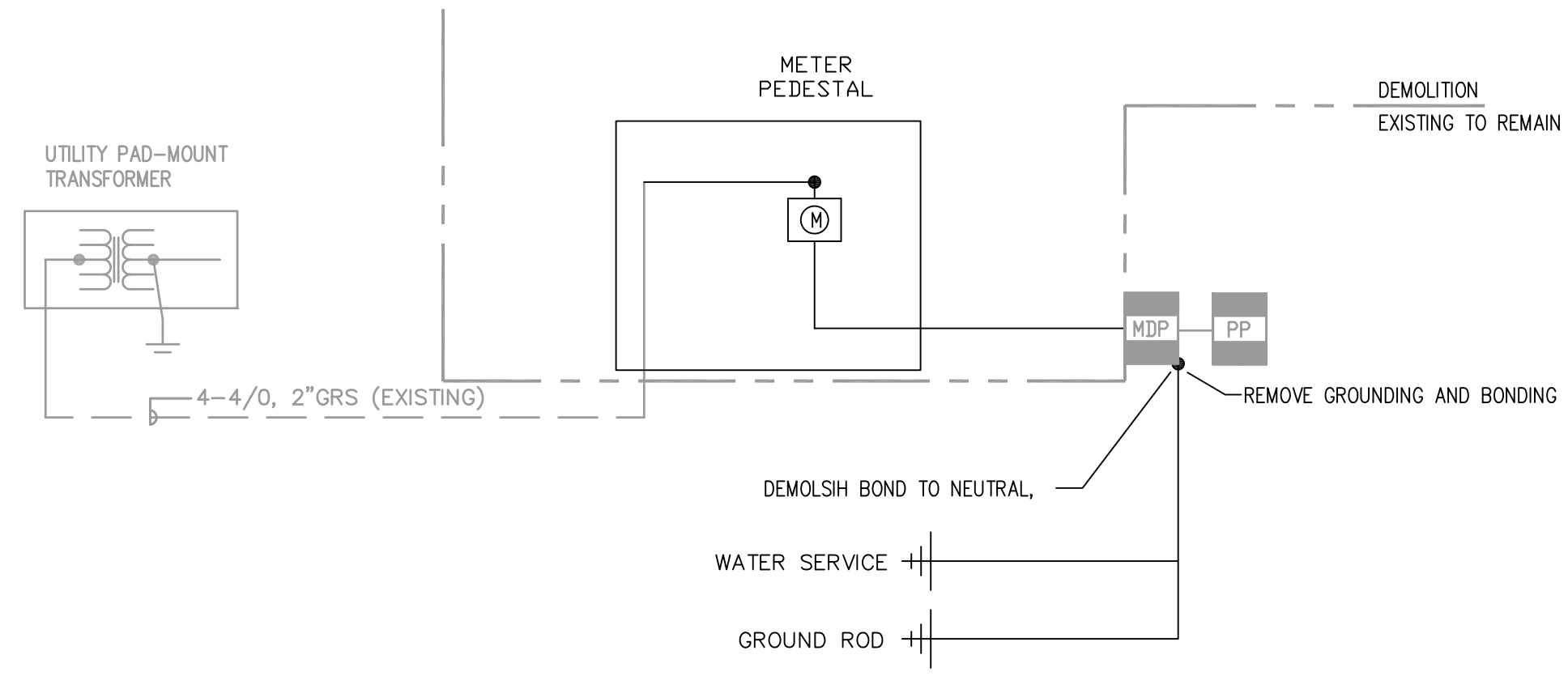
EXISTING SITE PLAN (1) SCALE: N.T.S.

ISSUED	DATE	BY	DESCRIPTION

JOB NO.	17-130-1176
DRAWN	MTK / VAD
CHECKED	MTK / JMB
APPROVED	MTK / JMB

SHEET TITLE
ELECTRICAL FLOOR PLAN AND DETAILS

SHEET NUMBER
E310



ONE LINE RISER DIAGRAM - DEMOLITION
SCALE: NTS ①

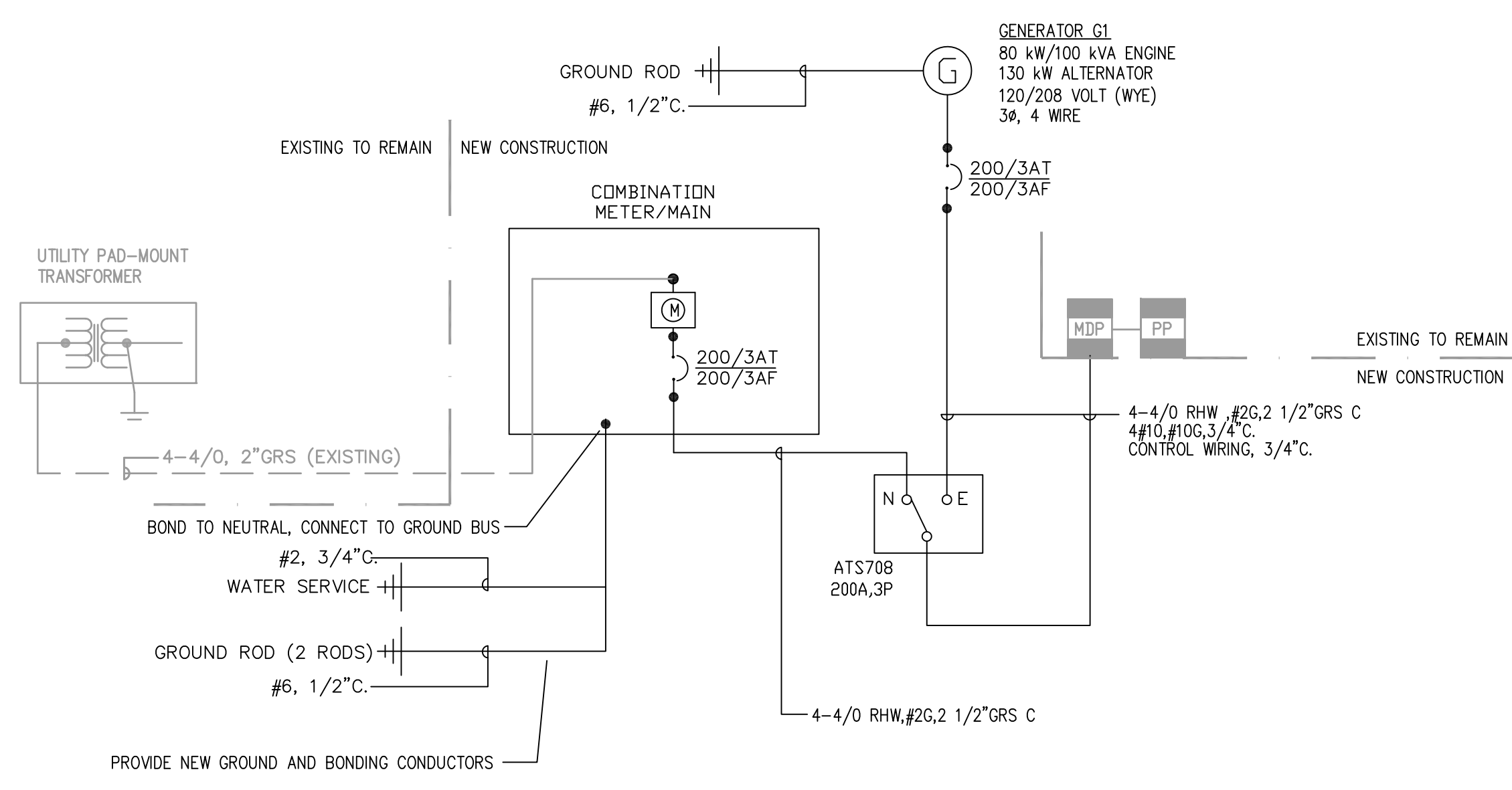
PANEL : MDP (EXISTING)		225 MAIN CB					
CKT. NO.	BRKR	DESCRIPTION	PHASE		DESCRIPTION	BRKR	CKT. NO.
			A	C			
1	100/3	PANEL PP			HVAC: VEHICLE EXHAUST	20/3	2
3	/	/			/	/	4
5	/	/			/	/	6
7	40/3	HVAC: A/C			HVAC: A/C	30/3	8
9	/	/			/	/	10
11	/	/			/	/	12
13	20/3	HVAC: A/C			HVAC: DUCT HEATER	20/3	14
15	/	/			/	/	16
17	/	/			/	/	18
19	50/2	EQUIPT: WELDING OUTLET			EQUIPT: WASHER	15/3	20
21	/	/			/	/	22
23	30/2	/			/	/	24
25	/	SPACE			EQUIPT: AIR COMPRESSOR	20/2	26
27	/	SPACE			/	/	28
29	/	SPACE			SPACE	20/1	30
31	/	SPACE			SPACE	20/1	32
33	/	SPACE			SPACE	15/1	34
35	/	SPACE			SPACE	20/1	36
37	/	SPACE			SPACE	20/1	38
39	20/1	GEN: CHARGER, CONTROL			SPACE	20/1	40
41	20/1	GEN: HEATER			SPACE	20/1	42

VOLTAGE: 120 / 208 VOLT, 3 PHASE, 3WIRE
 TOTAL PHASE A: 15200
 TOTAL PHASE B: 15200
 TOTAL PHASE C: 15200
 SUB TOTAL WATTS: 45600 DEMAND WATTS: 32960
 SUB TOTAL AMPS: 126.7 DEMAND AMPS: 91.6

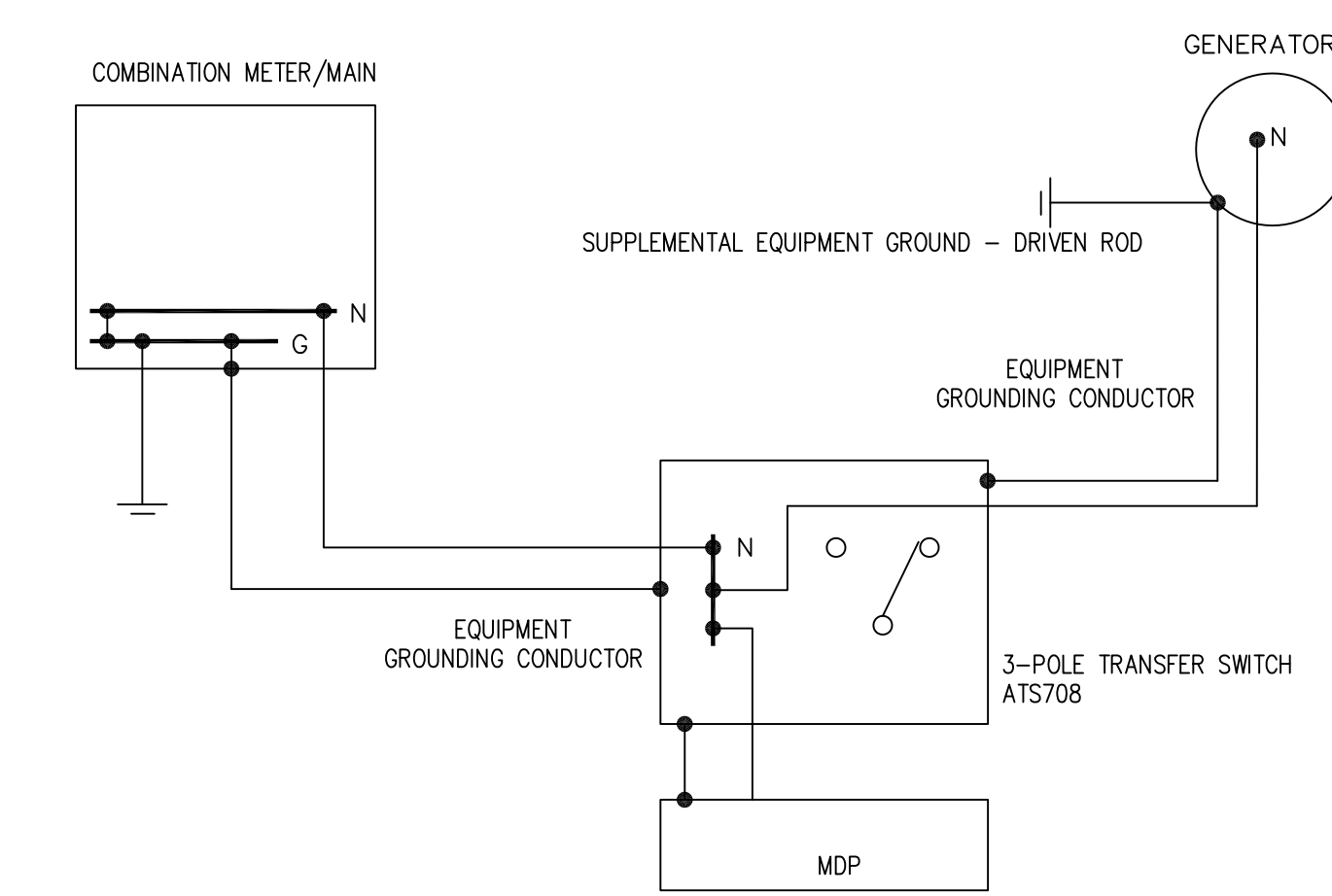
NOTES:
 1. BOTTOM FEED, NEMA1 ENCLOSURE, GROUND BUS
 2. LOCKABLE COVER, SURFACE MOUNTED
 3. 10000 AIC
 4. SQUARE D NOOD (EXISTING)
 * DENOTES HANDLELOCK CIRCUIT BREAKER

PANEL SCHEDULES
SCALE: NTS ②

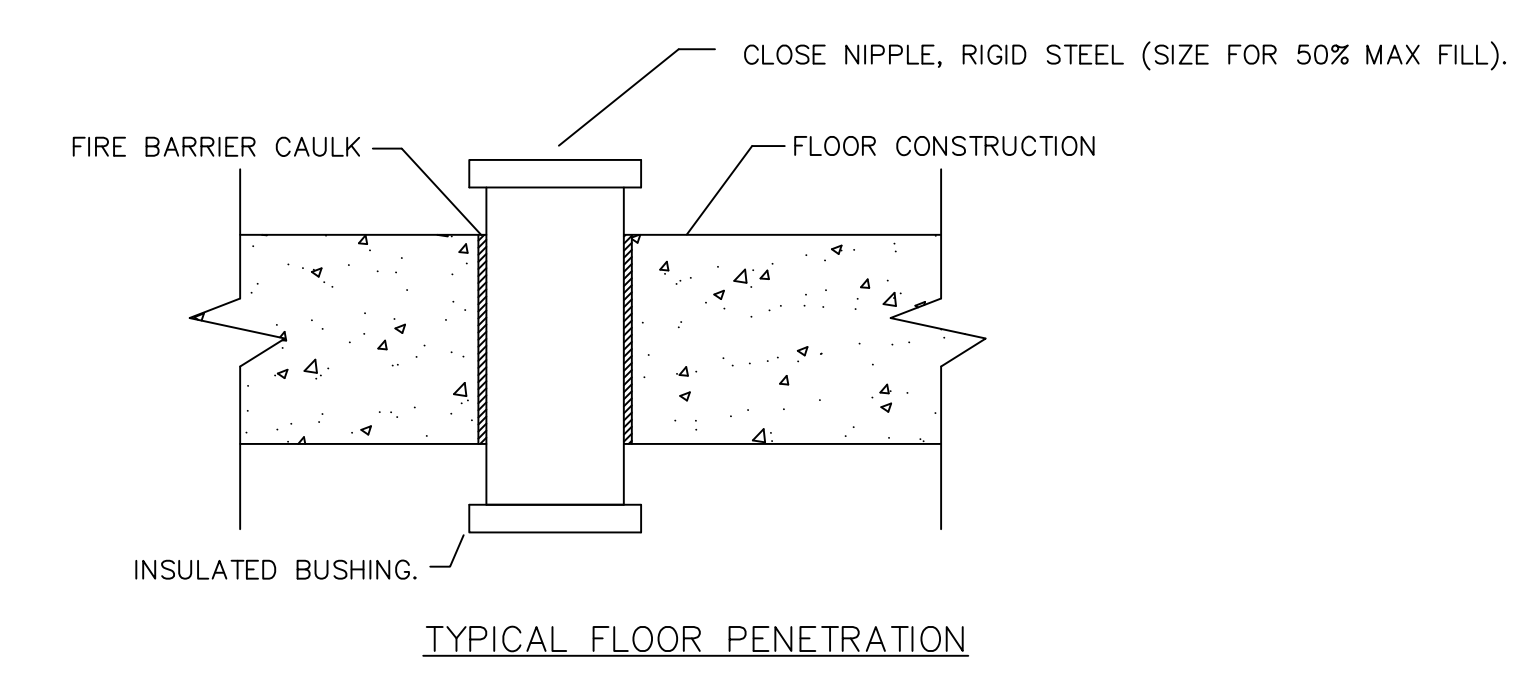
NOT USED
SCALE: NTS ③



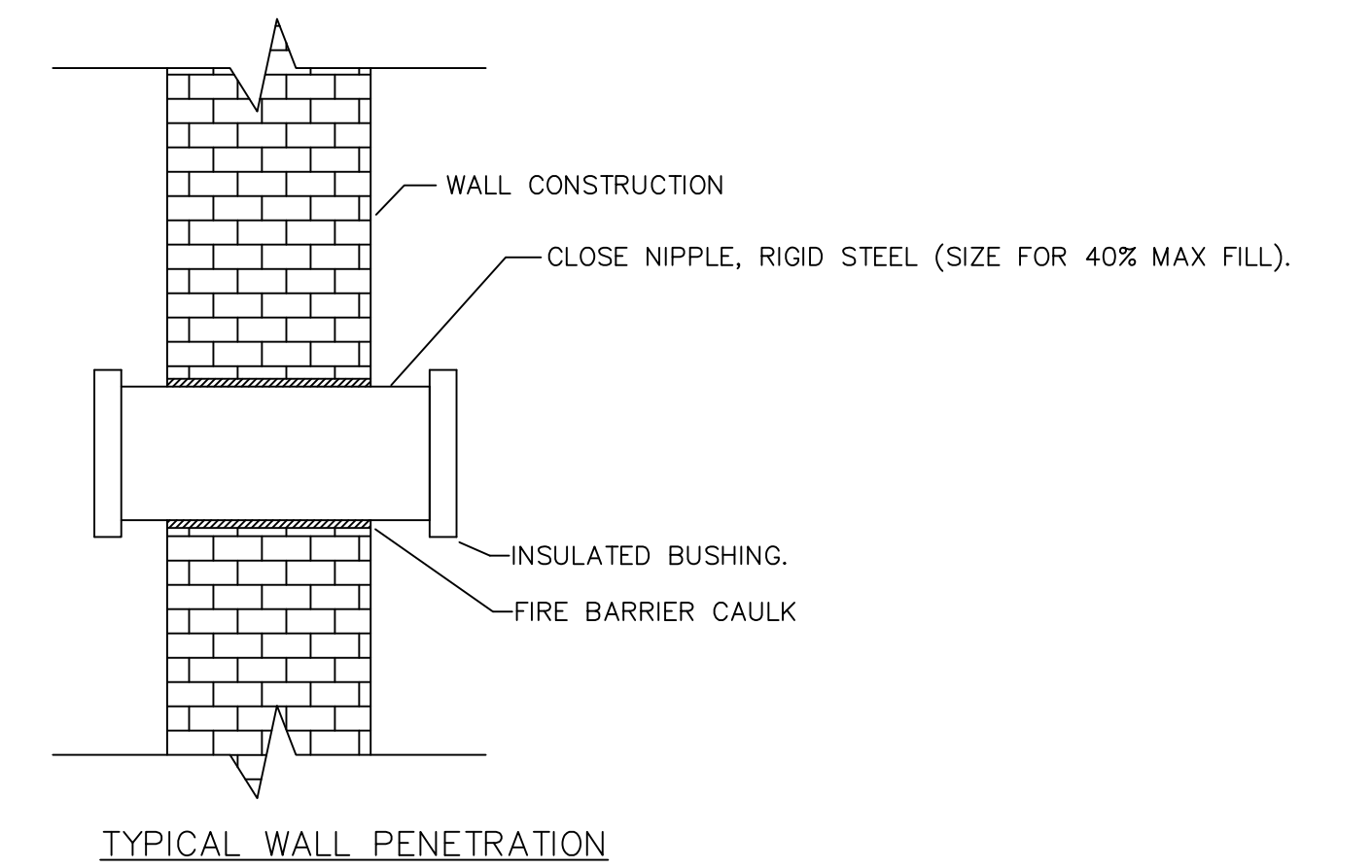
ONE LINE RISER DIAGRAM - REMODEL
SCALE: N.T.S. ④



GENERATOR/ATS GROUNDING DETAIL
SCALE: NTS ⑤



TYP. FLOOR PENETRATION DETAIL
SCALE: N.T.S. ⑥



TYP. WALL PENETRATION DETAIL
SCALE: N.T.S. ⑦