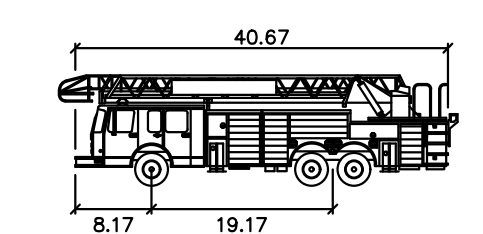
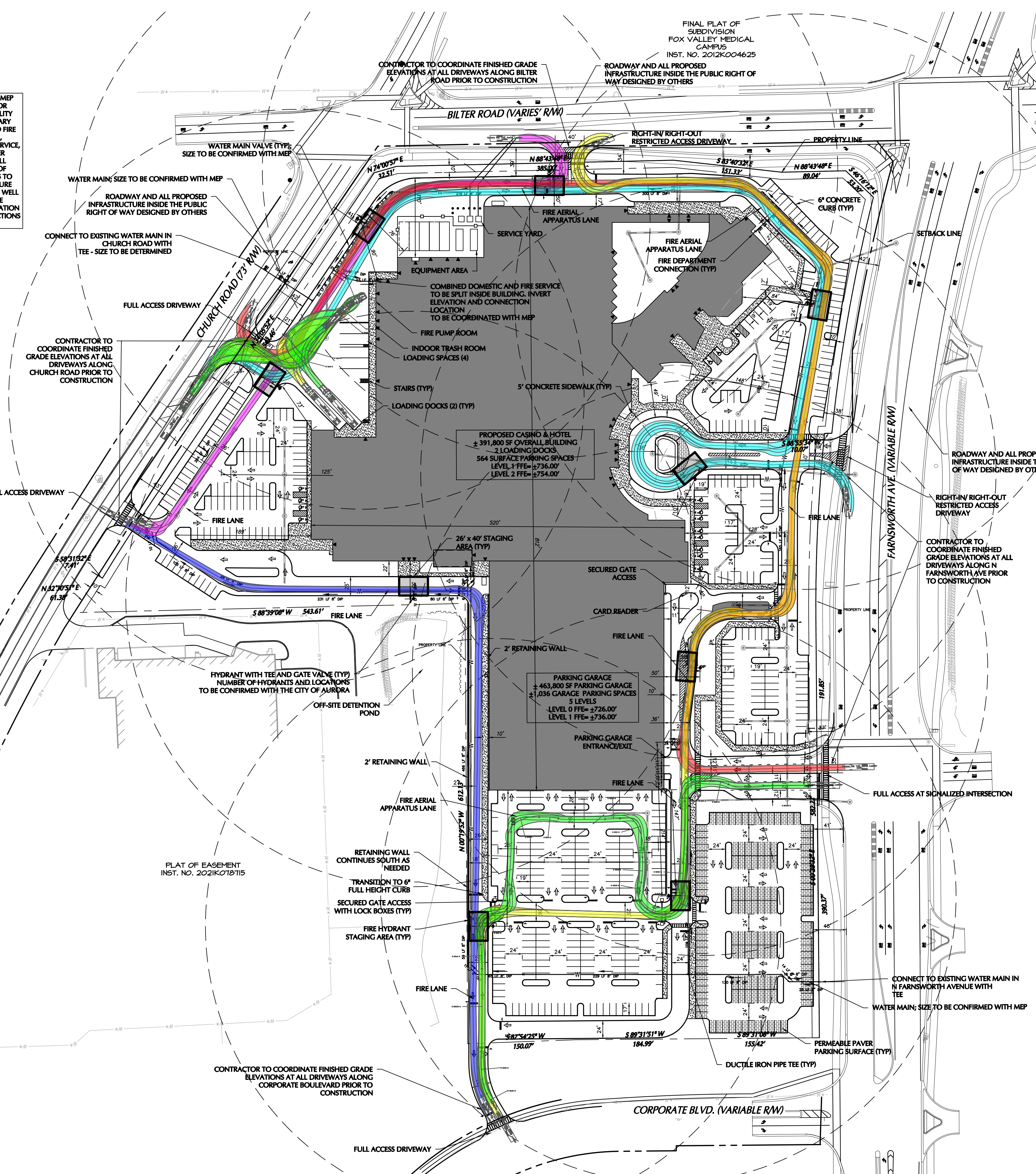
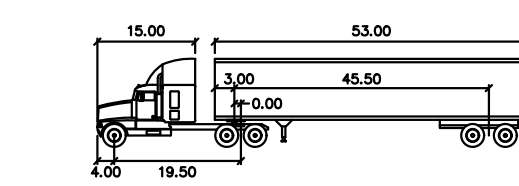


FIRE ACCESS PLAN FOR LOT 1 OF HC AURORA

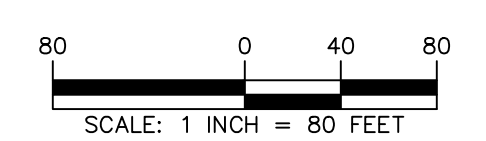
CONTRACTORS SHALL REFER TO MEP PLANS AND SPECIFICATIONS FOR ACTUAL LOCATIONS OF ALL UTILITY ENTRANCES TO INCLUDE SANITARY SEWER LATERALS, DOMESTIC AND FIRE PROTECTION WATER SERVICE, ELECTRICAL, TELECOM AND GAS SERVICE, ROOF DRAINS, AND ALL OTHER UTILITIES. CONTRACTORS SHALL COORDINATE INSTALLATION OF UTILITIES IN SUCH A MANNER AS TO AVOID CONFLICTS AND TO ENSURE PROPER DEPTHS ARE ACHIEVED AS WELL AS COORDINATING WITH THE REGULATORY AGENCY AS TO LOCATION OF AND SCHEDULING OF CONNECTIONS TO THEIR FACILITIES.



Aurora HM 110' Aerial Ladder
 Width : 8.50
 Track : 8.50
 Lock to Lock Time : 8.0
 Steering Angle : 45.0



WB-67
 Tractor Width : 8.50
 Tractor Length : 8.50
 Tractor Track : 8.50
 Lock to Lock Time : 8.0
 Steering Angle : 38.4
 Articulating Angle : 75.0



	EXISTING	PROPOSED
ROW BOUNDARY	---	---
BUILDING LINE	---	---
CONCRETE CURB	---	---
DOOR	---	---
BOLLARD	---	---
BUILDING SETBACK	---	---
STOP BAR	---	---
SIGN	---	---
CONCRETE SIDEWALK	---	---
TRAFFIC DIRECTIONAL ARROW	---	---
CROSSWALK	---	---
PARCEL LINE	---	---
PROPERTY LINE	---	---
BUILDING LINE	---	---
PEDESTRIAN DOOR LOCATION	---	---
OVERHEAD CANOPY	---	---
CONTOUR	---	---
SPOT ELEVATION	---	---
WATER LINE	---	---
FIRE SERVICE LOOP	---	---
FIRE HYDRANT	---	---
ROADWAY	---	---
FIRE DEPARTMENT CONNECTION	---	---
400' RADIUS	---	---
PERMEABLE PAVEMENT PARKING SURFACE	---	---
FIRE HYDRANT STAGING AREA	---	---

Description	Value	Unit
a) Building Height	105.00	feet
b) Building Square Footage (typical)	Casino & Hotel: 391,800 Parking Garage: 463,800	square feet square feet
c) Building fire suppression information including any proposed use of sprinkler systems, fire alarm systems, whether fire extinguishers are needed: Parking Garage, Casino, and Hotel will be fully sprinklered and a fire alarm will be present in all areas as well as fire extinguishers will be provided.		
d) General description of business to be conducted within each building including: will there be rack storage in the building, will there be storage of combustible materials over twelve feet in height, clearance of sprinkler heads and stored materials (18 inch minimum): Typical operating Casino with gaming, (6) restaurants and spa along with a 224 key Hotel. There will be rack storage in the warehouse, there will not be storage above 12'-0".		



Date	Description	No.
Revisions		



Project
AURORA, IL CASINO & HOTEL
 AURORA ILLINOIS

FIRE ACCESS PLAN FOR LOT 1 OF HC AURORA

Project No. 541017801	Drawing No. KT100
Date 5/12/2023	
Drawn By PM	
Checked By AU	Sheet 1 of 1