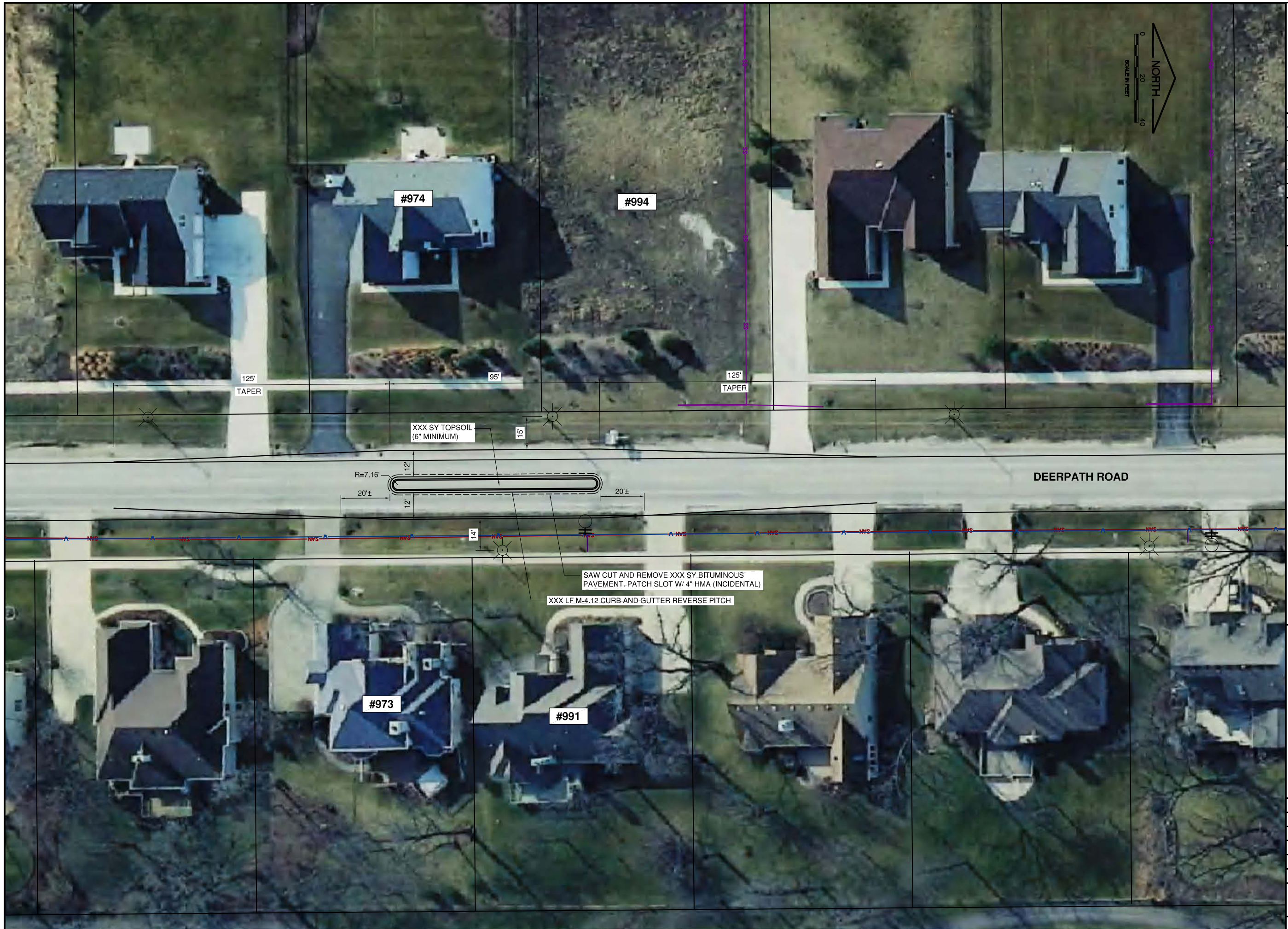


J:\Aurora\15299-03\Draw\Sheets
 FILE: Traffic_calming.dwg
 LAYOUT: 8 Deerpath
 UPDATE BY: Jim Ohse
 SURVEY BOOK #
 DATE: Friday, September 11, 2015 3:03:23 PM
 XREF DWG: Frontenac Topo.dwg
 Deerpath Topo.dwg

REVISIONS		
NUMBER	BY	DATE

0 1 2
 THIS BAR IS EQUAL TO 2"
 AT FULL SCALE (34X22).



CITY OF AURORA
 AURORA, ILLINOIS

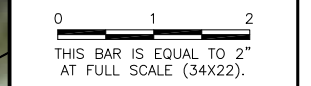
TRAFFIC CALMING MEASURES
 DEERPETH ROAD

© Copyright CMT, Inc.
CMT
 CRAWFORD, MURPHY & TILLY, INC.
 CONSULTING ENGINEERS
 License No. 184-000613

DESIGN BY: JSK
 DRAWN BY: JRO
 CHECKED BY:
 APPROVED BY:
 DATE: 9/11/15
 JOB No: 15299-03

DRAFT FOR REVIEW

REVISIONS		
NUMBER	BY	DATE



**CITY OF AURORA
 AURORA, ILLINOIS**

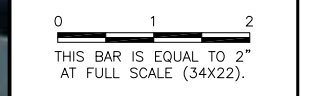
**TRAFFIC CALMING MEASURES
 VILLAGE GREEN DRIVE AT RICHLAND LANE**

© Copyright CMT, Inc.

CMT
 CRAWFORD, MURPHY & TILLY, INC.
 CONSULTING ENGINEERS
 License No. 184-000613

DESIGN BY:	JSK
DRAWN BY:	JRO
CHECKED BY:	
APPROVED BY:	
DATE:	9/11/15
JOB No:	15299-03

REVISIONS		
NUMBER	BY	DATE



**CITY OF AURORA
 AURORA, ILLINOIS**

**TRAFFIC CALMING MEASURES
 VILLAGE GREEN NEAR CLIFTON**

© Copyright CMT, Inc.

CMT
 CRAWFORD, MURPHY & TILLY, INC.
 CONSULTING ENGINEERS
 License No. 184-000613

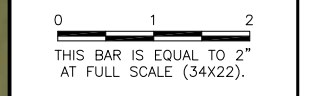
DESIGN BY: JSK
 DRAWN BY: JRO
 CHECKED BY:
 APPROVED BY:
 DATE: 9/11/15
 JOB No: 15299-03

**DRAFT
 FOR REVIEW**

SHEET 1 OF 1 SHEET



REVISIONS		
NUMBER	BY	DATE



**CITY OF AURORA
 AURORA, ILLINOIS**

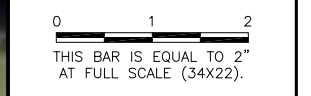
**TRAFFIC CALMING MEASURES
 OAKHURST AT PARK**

© Copyright CMT, Inc.

CMT
 CRAWFORD, MURPHY & TILLY, INC.
 CONSULTING ENGINEERS
 License No. 184-000613

DESIGN BY:	JSK
DRAWN BY:	JRO
CHECKED BY:	
APPROVED BY:	
DATE:	9/11/15
JOB No:	15299-03

REVISIONS		
NUMBER	BY	DATE



**CITY OF AURORA
 AURORA, ILLINOIS**

**TRAFFIC CALMING MEASURES
 OAKHURST NEAR ANTON DRIVE**

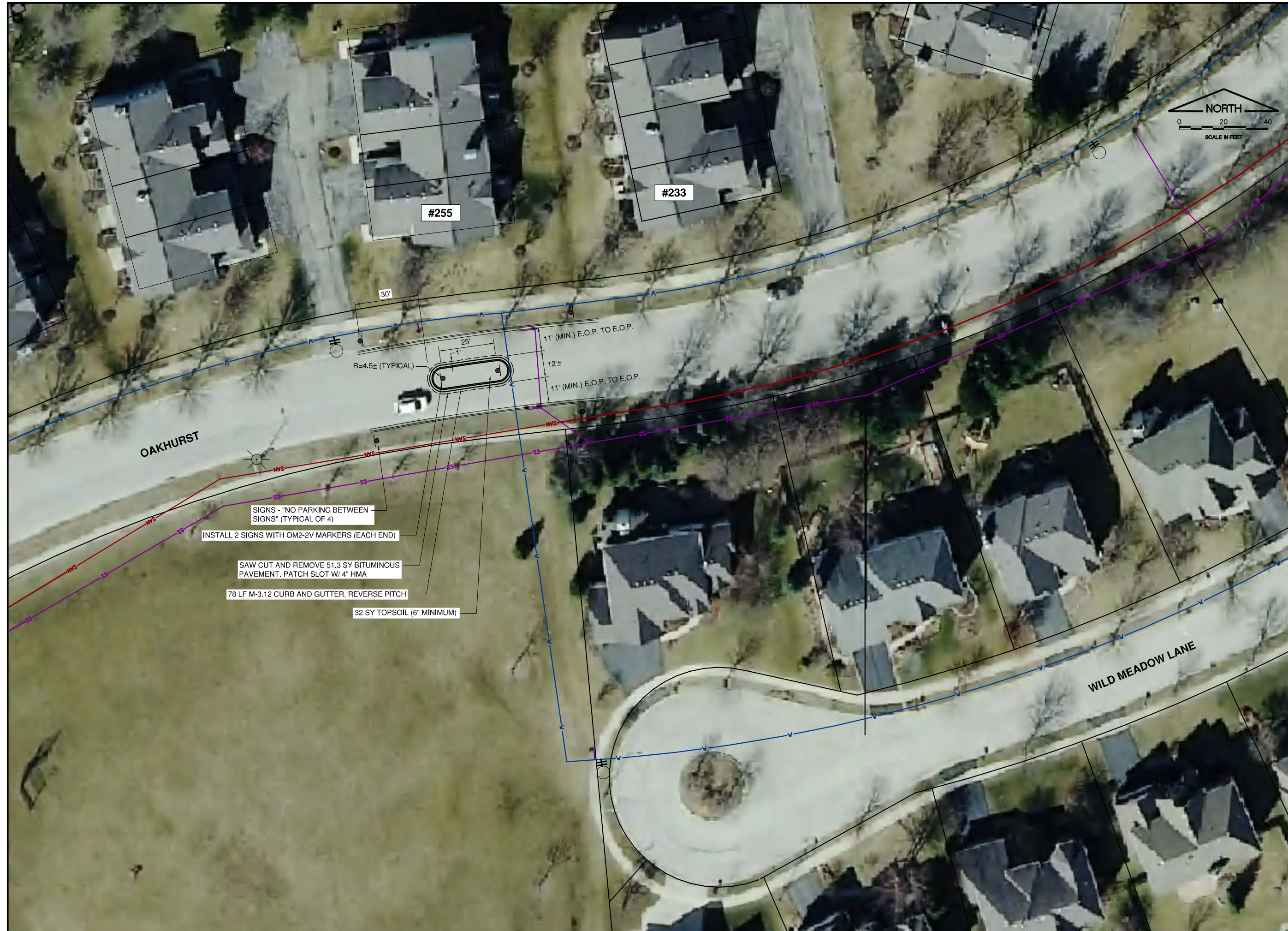
© Copyright CMT, Inc.

CMT
 CRAWFORD, MURPHY & TILLY, INC.
 CONSULTING ENGINEERS
 License No. 184-000613

DESIGN BY:	JSK
DRAWN BY:	JRO
CHECKED BY:	
APPROVED BY:	
DATE:	9/11/15
JOB No:	15299-03

**DRAFT
 FOR REVIEW**

SHEET 1 OF 1 SHEET



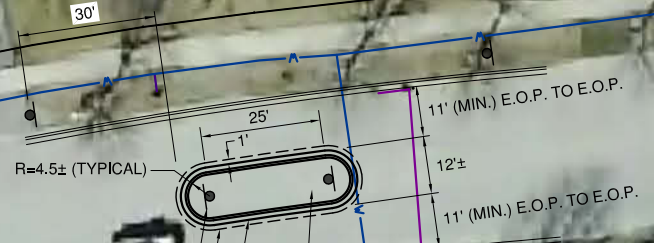
OAKHURST

WILD MEADOW LANE

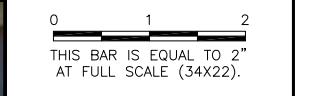
#255

#233

- SIGNS - "NO PARKING BETWEEN SIGNS" (TYPICAL OF 4)
- INSTALL 2 SIGNS WITH OM2-2V MARKERS (EACH END)
- SAW CUT AND REMOVE 51.3 SY BITUMINOUS PAVEMENT. PATCH SLOT W/ 4" HMA
- 78 LF M-3.12 CURB AND GUTTER, REVERSE PITCH
- 32 SY TOPSOIL (6" MINIMUM)



REVISIONS		
NUMBER	BY	DATE



- SIGNS - W16-17P AND W16-12P (TYPICAL OF 3)
- 31.5 LF BARRIER CURB
- 7 SY TOPSOIL (6" MINIMUM)
- SAW CUT AND REMOVE 12.5 SY BITUMINOUS PAVEMENT. PATCH SLOT W/ 4" HMA (INCIDENTAL)
- INSTALL 3 SIGNS WITH OM2-2V MARKERS

**CITY OF AURORA
 AURORA, ILLINOIS**

**TRAFFIC CALMING MEASURES
 COMMERCE AND BRADBURY**

© Copyright CMT, Inc.

CMT
 CRAWFORD, MURPHY & TILLY, INC.
 CONSULTING ENGINEERS
 License No. 184-000613

DESIGN BY:	JSK
DRAWN BY:	JRO
CHECKED BY:	
APPROVED BY:	
DATE:	9/11/15
JOB No:	15299-03