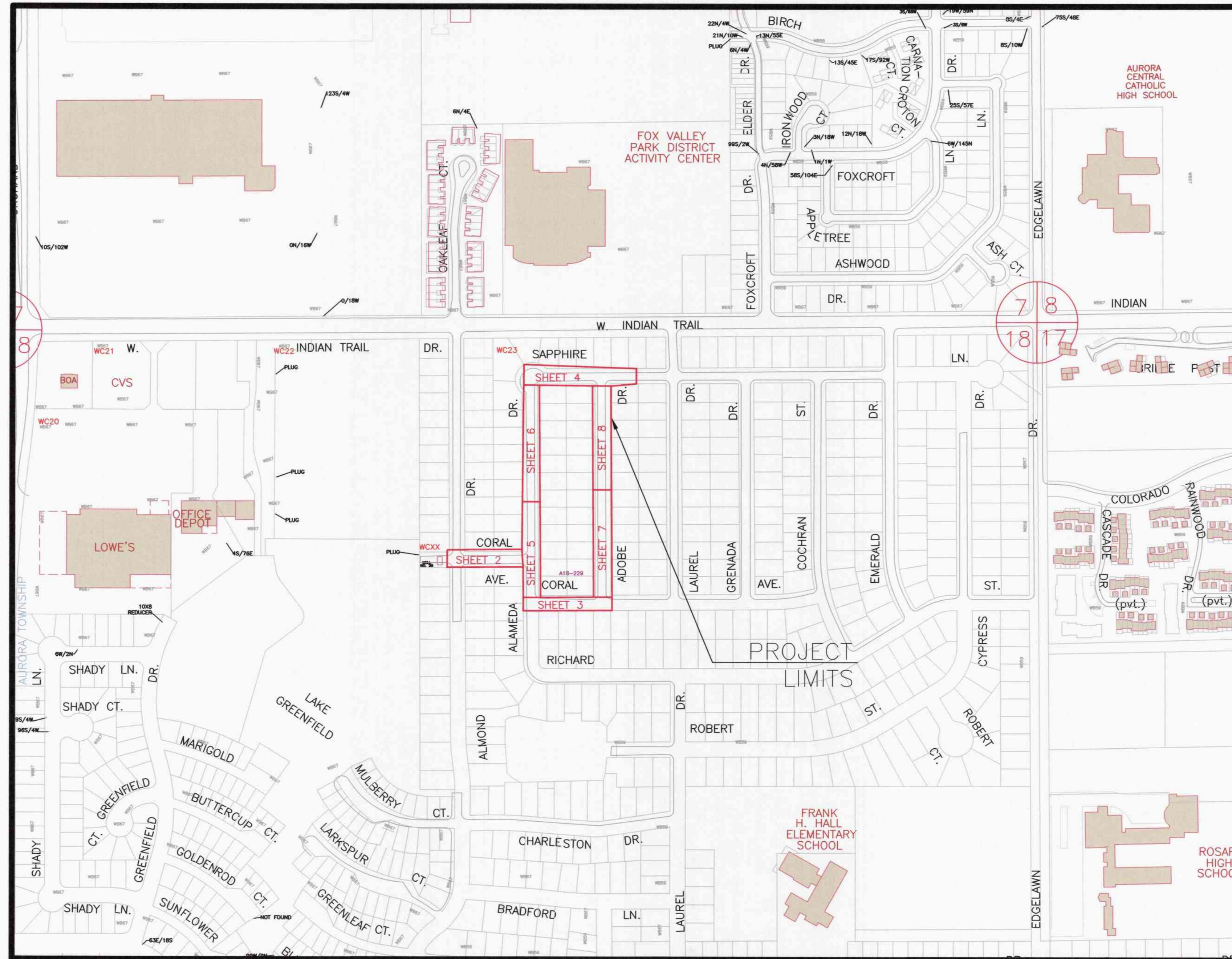


# INDIAN TRAIL WEST WATER MAIN REPLACEMENT

JANUARY, 2023

GENERALLY LOCATED: N 1/2 SECTION 18, T38N, R8E AURORA TOWNSHIP

LEGEND	
EXISTING	PROPOSED
SANITARY SEWER	8" PVC
STORM SEWER	12" STORM
WATERMAIN	30" WSP
GAS LINE	
TELEPHONE LINE	
ELECTRIC LINE	
FENCE	
INDEX CONTOUR	
INTERMEDIATE CONTOUR	
EDGE OF PAVEMENT	
CURB AND GUTTER	
RIGHT-OF-WAY	
SANITARY MANHOLE	
SANITARY CLEANOUT	
STORM MANHOLE	
CATCH BASIN	
INLET	
FLARED END SECTION	
FIRE HYDRANT	
VALVE VAULT	
VALVE BOX	
STREET LIGHT	
POWER POLE	
STREET SIGN	
ELECTRIC BOX	
TELEPHONE BOX	
TELEPHONE MANHOLE	
B-BOX	
GAS VALVE	
TRAFFIC HANDHOLE	
ELECTRIC HANDHOLE	
MAILBOX	
PARKING METER	
TREE W/ DIAMETER	
UTILITY CROSSING	
SPOT ELEVATION	X 602.0
TOP OF CURB ELEVATION	X 602.0 TC
TOP OF FOUNDATION ELEVATION	X 602.0 TF
GUTTER ELEVATION	X 602.0 FL
PAVEMENT ELEVATION	X 602.0 P
FORCE MAIN	
UNDERDRAIN	
OVERHEAD LINE	
CABLE TV LINE	
HIGH WATER LEVEL	
NORMAL WATER LEVEL	
PAVEMENT FLOW DIRECTION	
EXPLORATORY EXCAVATION LOCATION	
ADDRESS	
SANITARY MANHOLE REHABILITATION NUMBER	
SOIL BORING LOCATION WITH IDENTIFICATION NUMBER & ELEVATION	SIS #1 600.00
STRUCTURE TO BE REMOVED	
PLUG EXISTING PIPE	



## INDEX OF SHEETS

- 1 COVER SHEET
- 2-8 PLAN AND PROFILE
- 9-12 STANDARD DETAIL SHEETS

PLANS PREPARED BY:

**CITY OF AURORA**

DEPARTMENT OF PUBLIC WORKS, DIVISION OF ENGINEERING

77 S. BROADWAY AVE. - AURORA, IL

PHONE: 630-256-3200 FAX: 630-256-3229

### REVISIONS:

DESIGNED BY: KTM DRAWN BY: KTM CHECKED BY: JMB APPROVED BY: JMB

HORIZ. SCALE: N/A

VERT. SCALE: N/A

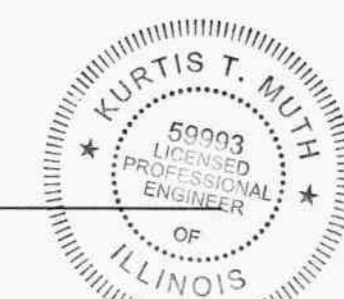
DATE: 1/2023

*Kurtis T. Muth*

ILLINOIS REGISTERED PROFESSIONAL

ENGINEER No.

LICENSE EXPIRES



12/19/27

DATE

062-59993

NOVEMBER 30, 2023