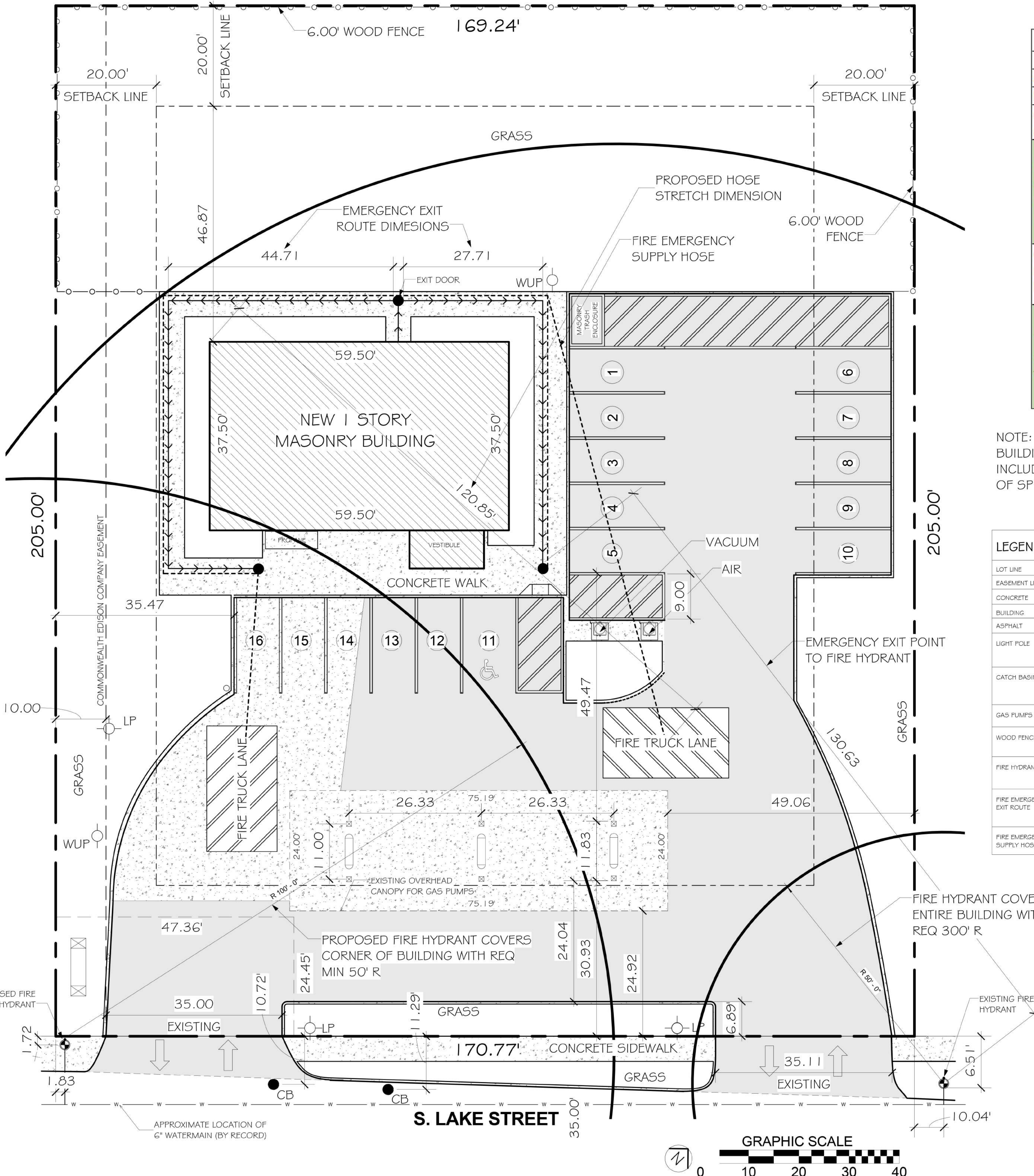


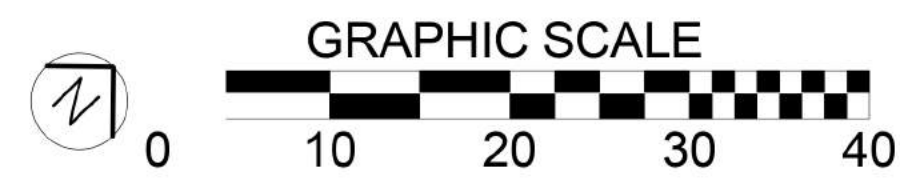
# FIRE ACCESS PLAN FOR MARSHALLS ADDITION LOT 1



Fire Access Plan Data Table		
Description	Value	Unit
a) Building Height	14.00	feet
b) Building Square Footage (typical)	2,231	square feet
c) Building fire suppression information including any proposed use of sprinkler systems, fire alarm systems, whether fire extinguishers are needed:		
Emergency lighting shall be added to the wall spaces above all doors and means of egress, smoke and carbon monoxide detectors shall be added to the ceiling of the retail space. Fire alarms and fire extinguishers, will be added to the building interior.		
d) General description of business to be conducted within each building including: will there be rack storage in the building, will there be storage of combustible materials over twelve feet in height, clearance of sprinkler heads and stored materials (18 inch minimum):		
The building will serve a retail space for the gas station. This retail space will have no rack storage in the building, and no combustible materials over twelve feet in height will be stored in the building		

NOTE:  
BUILDING WILL NOT  
INCLUDE INSTALLATION  
OF SPRINKLER SYSTEM

LEGEND	
LOT LINE	---
EASEMENT LINE	- - - -
CONCRETE	▨
BUILDING	▩
ASPHALT	▧
LIGHT POLE	⊙ LP
CATCH BASIN	⊙ CB
GAS PUMPS (EXIST.)	⊠
WOOD FENCE	○ ○ ○ ○
FIRE HYDRANT	⊙ FH
FIRE EMERGENCY EXIT ROUTE	● → → →
FIRE EMERGENCY SUPPLY HOSE	- - - -



DRAFTER:



ENGINEERS - ARCHITECTS -  
CONSULTANTS - DESIGN  
3609 W North Ave.  
Chicago, IL 60647  
773-772-4448  
773-243-0440 (fax)  
orders@amphionus.com

PETITIONER:

AMPHION  
ENGINEERING INC.  
3609 W NORTH AVE.  
CHICAGO IL 60647

DATE ISSUED:

4 / 1 / 2016

TITLE:

FIRE  
ACCESS  
PLAN FOR  
MARSHALLS  
ADDITION  
LOT 1