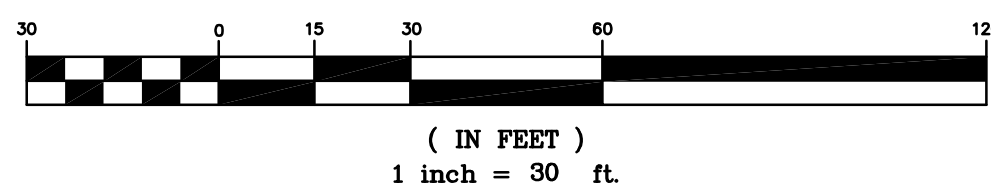


BOUNDARY AND TOPOGRAPHIC SURVEY

BY
GENTILE AND ASSOCIATES, INC.
PROFESSIONAL LAND SURVEYORS

550 E. ST. CHARLES PLACE
LOMBARD, ILLINOIS 60148
PHONE : (630) 916-6262
FAX : (630) 916-6264

GRAPHIC SCALE



LEGEND

- TREE WITH TRUNK DIAM. SIZE
- UTILITY PEDESTAL
- UTILITY POLE
- LIGHT STANDARD
- SIGN POST
- FLAG POLE
- FIRE HYDRANT
- WATER SERVICE SHUTOFF VALVE
- WATER VALVE VAULT
- CLOSED COVER DRAINAGE STRUCTURE
- OPEN COVER DRAINAGE STRUCTURE
- CURB INLET/CATCH BASIN
- SANITARY SEWER MANHOLE
- GAS SERVICE SHUTOFF VALVE
- CLEANOUT
- WATER SHUTOFF VALVE WITH 8" CASING
- OVERHEAD WIRES (# OF WIRES)
- STORM SEWER
- SANITARY SEWER
- GAS MAIN
- WATER MAIN
- UNDERGROUND ELECTRIC
- UNDERGROUND TELEPHONE
- GROUND ELEVATION
- PAVEMENT ELEVATION
- FINISHED FLOOR ELEVATION
- TOP OF WALL
- ASPHALT PAVEMENT
- CONCRETE PAVEMENT

NOTES:

EXCEPT AS SPECIFICALLY STATED OR SHOWN ON THIS PLAT, THIS SURVEY DOES NOT PURPORT TO REFLECT ANY OF THE FOLLOWING WHICH MAY BE APPLICABLE TO THE SUBJECT REAL ESTATE: EASEMENTS OTHER THAN POSSIBLE EASEMENTS WHICH WERE VISIBLE AT THE TIME OF MAKING OF THIS SURVEY; BUILDING SETBACK LINES, RESTRICTIVE COVENANTS, SUBDIVISION RESTRICTIONS, ZONING OR OTHER LAND-USE REGULATIONS, AND ANY OTHER FACTS WHICH AN ACCURATE AND CURRENT TITLE SEARCH MAY DISCLOSE.

THE LOCATIONS OF UNDERGROUND UTILITIES AS SHOWN HEREON ARE BASED ON ABOVE GROUND STRUCTURES AND RECORD DRAWINGS PROVIDED THE SURVEYOR. LOCATIONS OF UNDERGROUND UTILITIES MAY VARY FROM LOCATIONS SHOWN HEREON. ADDITIONAL BURIED UTILITIES/STRUCTURES MAY BE ENCOUNTERED. NO EXCAVATIONS WERE MADE DURING THE PROGRESS OF THIS SURVEY TO LOCATE BURIED UTILITIES/STRUCTURES. BEFORE ANY EXCAVATION BEGINS ALL UTILITY COMPANIES SERVING THE PROPERTY SHOULD BE CONTACTED FOR VERIFICATION OF FIELD LOCATION.

UPON INSPECTION OF FLOOD INSURANCE RATE MAP KANE COUNTY, ILLINOIS AND INCORPORATED AREAS, NO. 170890335H, COMMUNITY NUMBER 170320, EFFECTIVE DATE AUGUST 3, 2009, ALL OF THE SUBJECT PROPERTY SHOWN HEREON LIES WITH ZONE "X" (AREAS DETERMINED TO BE OUTSIDE 0.2% ANNUAL CHANCE FLOODPLAIN).

BASIS OF BEARINGS: ILLINOIS STATE PLANE COORDINATE, EAST ZONE.
BENCHMARK: CITY OF AURORA CONTROL MONUMENT # 11 NORTH LOCATED AT THE NORTHEAST CORNER OF PENNSYLVANIA & MICHIGAN AVENUE, 6.1 FEET NORTHWEST OF STOP SIGN AND 8.0 FEET SOUTHEAST OF STREET SIGN.

ELEV. = 684.53 (NAVD 88 DATUM)

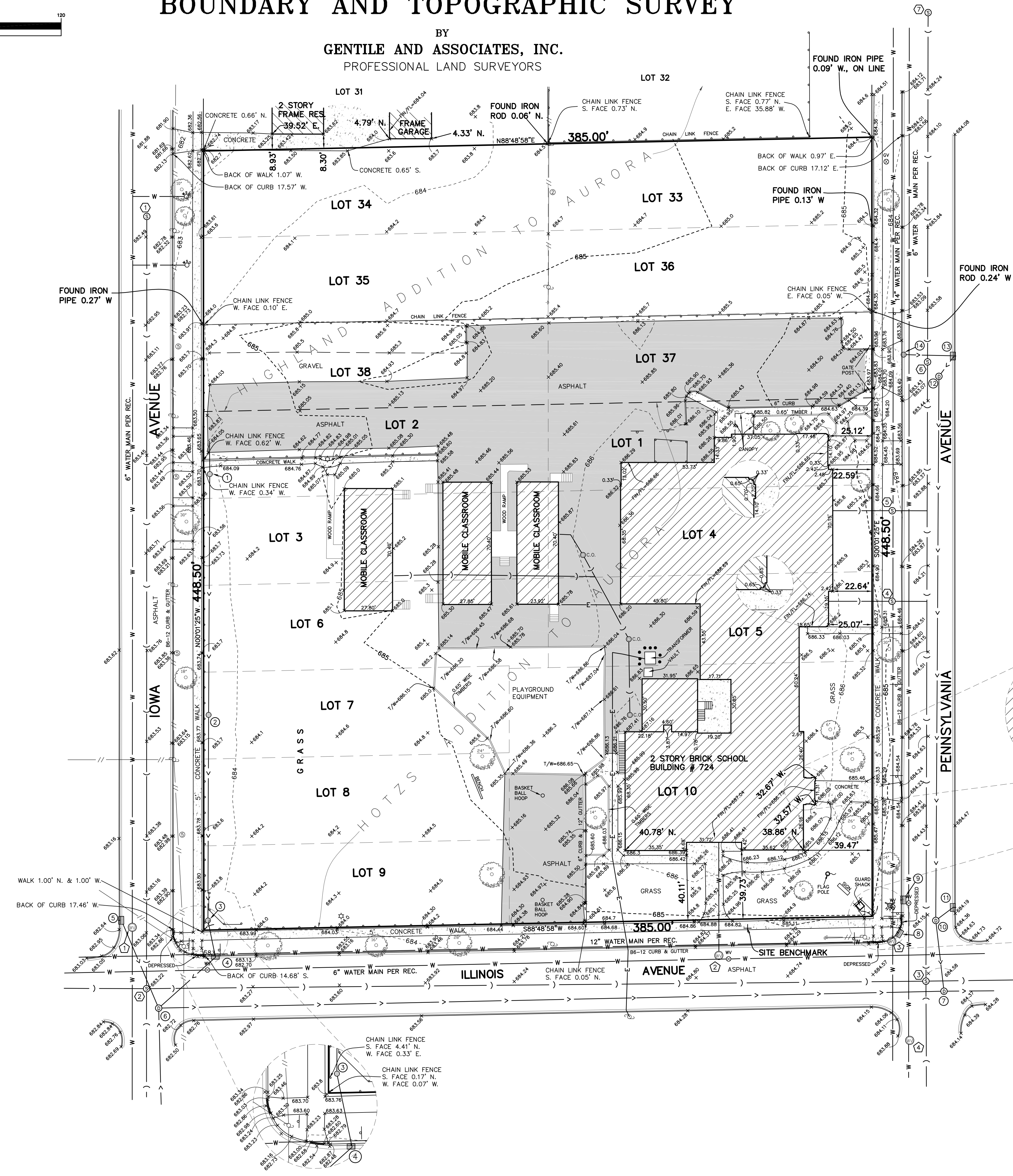
SITE BENCHMARK: CROSS CUT IN CONCRETE WALK LOCATED ON THE NORTH SIDE OF THE ILLINOIS AVENUE IN FRONT OF 2-STORY SCHOOL BUILDING.

ELEV. = 684.81

BASE SCALE : 1 INCH = 30 FEET
DISTANCES ARE MARKED IN FEET AND DECIMAL PARTS THEREOF
ORDERED BY : WEST AURORA SCHOOL DISTRICT 129
DRAWN BY : MMG
CHECKED BY :
SURVEYED BY : JG

COMPARE ALL POINTS BEFORE BUILDING BY SAME AND AT ONCE REPORT ANY DIFFERENCE. FOR BUILDING LINE AND OTHER RESTRICTIONS NOT SHOWN HEREON REFER TO YOUR ABSTRACT DEED, CONTRACT AND ZONING ORDINANCE.

ORDER NO. 15-20624 HILL ELEMENTARY SCHOOL, AURORA



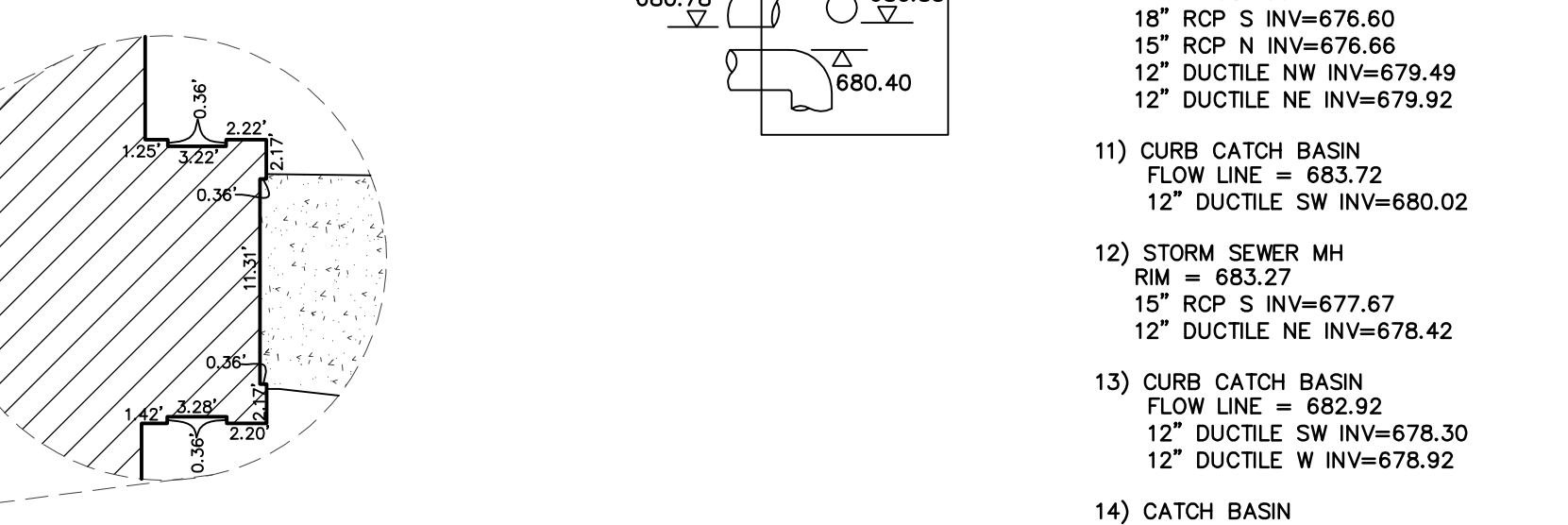
LOTS 1 TO 10 IN BLOCK 1 IN HOLTZS ADDITION TO AURORA IN THE SOUTHEAST QUARTER SECTION 16, TOWNSHIP 38 NORTH, RANGE 8 EAST OF THE THIRD PRINCIPAL MERIDIAN, ACCORDING TO THE PLAT THEREOF RECORDED JANUARY 22, 1896 IN BOOK 14, PAGE 13, IN KANE COUNTY, ILLINOIS.

ALSO
LOTS 33 TO 38 IN HIGHLAND ADDITION TO AURORA IN THE SOUTHEAST QUARTER OF SECTION 16, TOWNSHIP 38 NORTH, RANGE 8 EAST OF THE THIRD PRINCIPAL MERIDIAN, ACCORDING TO THE PLAT THEREOF RECORDED JUNE 16, 1890 AS DOCUMENT NUMBER 30451 IN KANE COUNTY, ILLINOIS.

TOTAL AREA: 172,637.00 sq. ft. (3.96 acres)
PROPERTY COMMONLY KNOWN AS: 724 PENNSYLVANIA AVENUE, AURORA, ILLINOIS.

STORM SEWER STRUCTURES

- 1) CATCH BASIN
RIM = 683.86
6" CPP N INV=682.06
12" PVC S INV=681.98
- 2) INLET
RIM = 683.80
12" PVC N INV=681.55
12" PVC S INV=681.51
- 3) INLET
RIM = 683.65
12" RCP N INV=681.05
12" RCP SE INV=681.00
- 4) CURB CATCH BASIN
FLOW LINE = 682.45
12" RCP NW INV=679.45
12" DUCTILE SW INV=679.43
- 5) CURB CATCH BASIN
FLOW LINE = 682.32
12" DUCTILE SE INV=679.92
- 6) STORM SEWER MH
RIM = 682.99
12" DUCTILE NW INV=676.39
24" RCP E INV=676.27
2" S INV=676.43
NE INV INACCESSIBLE
(PIPE 12" PER REC.)
- 7) STORM SEWER MH
RIM = 684.34
24" RCP W INV=674.44
24" RCP E INV=673.99
18" PVC N INV=675.85
- 8) CURB CATCH BASIN
FLOW LINE = 683.72
FULL OF DEBRIS
- 9) CURB CATCH BASIN
FLOW LINE = 683.70
12" DUCTILE SE INV=680.78
6" PVC S INV=680.85
8" PVC TOP OF SE PIPE=680.40
- 10) STORM SEWER MH
RIM = 684.06
18" RCP S INV=676.60
15" RCP N INV=676.66
12" DUCTILE NW INV=679.49
12" DUCTILE NE INV=679.92
- 11) CURB CATCH BASIN
FLOW LINE = 683.72
12" DUCTILE SW INV=680.02
- 12) STORM SEWER MH
RIM = 683.27
15" RCP S INV=677.67
12" DUCTILE NE INV=678.42
- 13) CURB CATCH BASIN
FLOW LINE = 682.92
12" DUCTILE SW INV=678.30
12" DUCTILE W INV=678.92
- 14) CATCH BASIN
RIM = 682.83
12" DUCTILE E INV=679.63



SANITARY SEWER STRUCTURES

- 1) SANITARY SEWER MH
RIM = 682.33
10" PVC S INV=675.89
- 2) SANITARY SEWER MH
RIM = 683.19
18" PVC E INV=674.05
8" PVC W INV=674.61
10" PVC N INV=674.53
12" PVC S INV=674.42
- 3) SANITARY SEWER MH
RIM = 684.52
21" PVC E INV=672.53
18" PVC W INV=672.68
8" PVC N INV=673.42
10" PVC S INV=673.57
- 4) SANITARY SEWER MH
RIM = 684.55
6" E INV=677.60
6" W INV=677.60
- 5) SANITARY SEWER MH
RIM = 684.24
6" E INV=676.92
6" W INV=676.92
- 6) SANITARY SEWER MH
RIM = 683.40
8" PVC S INV=675.70
8" PVC N INV=675.85
- 7) SANITARY SEWER MH
RIM = 684.05
8" PVC S INV=677.33
DISTANCE TO NORTH PROPERTY LINE = 212 FEET
(LOCATION NOT TO SCALE)

WATER VALVE VAULT

- 1) WATER VALVE VAULT
RIM = 682.73
TOP OF 6" PIPE=678.99
- 2) WATER VALVE VAULT
RIM = 684.61
TOP OF PIPE=680.11
- 3) WATER VALVE VAULT
RIM = 682.82
TOP OF 12" PIPE=678.19
- 4) WATER VALVE VAULT
RIM = 683.76
TOP OF 6" PIPE=679.50

STATE OF ILLINOIS S.S.
COUNTY OF DuPAGE

WE, GENTILE AND ASSOCIATES, INC., HEREBY CERTIFY THAT A SURVEY HAS BEEN MADE AT AND UNDER MY DIRECTION, OF THE PROPERTY DESCRIBED ABOVE, AND THAT THE PLAT HEREON DRAWN IS A CORRECT REPRESENTATION OF SAID SURVEY. THIS PLAT CONFORMS TO THE MINIMUM STANDARD REQUIREMENTS FOR A BOUNDARY SURVEY.

SEPTEMBER 18, A.D. 2015

BY : _____
ILLINOIS PROFESSIONAL LAND SURVEYOR NO. 2925
MY LICENSE EXPIRES NOVEMBER 30, 2016
ILLINOIS PROFESSIONAL DESIGN FIRM LICENSE NO. 184.002870