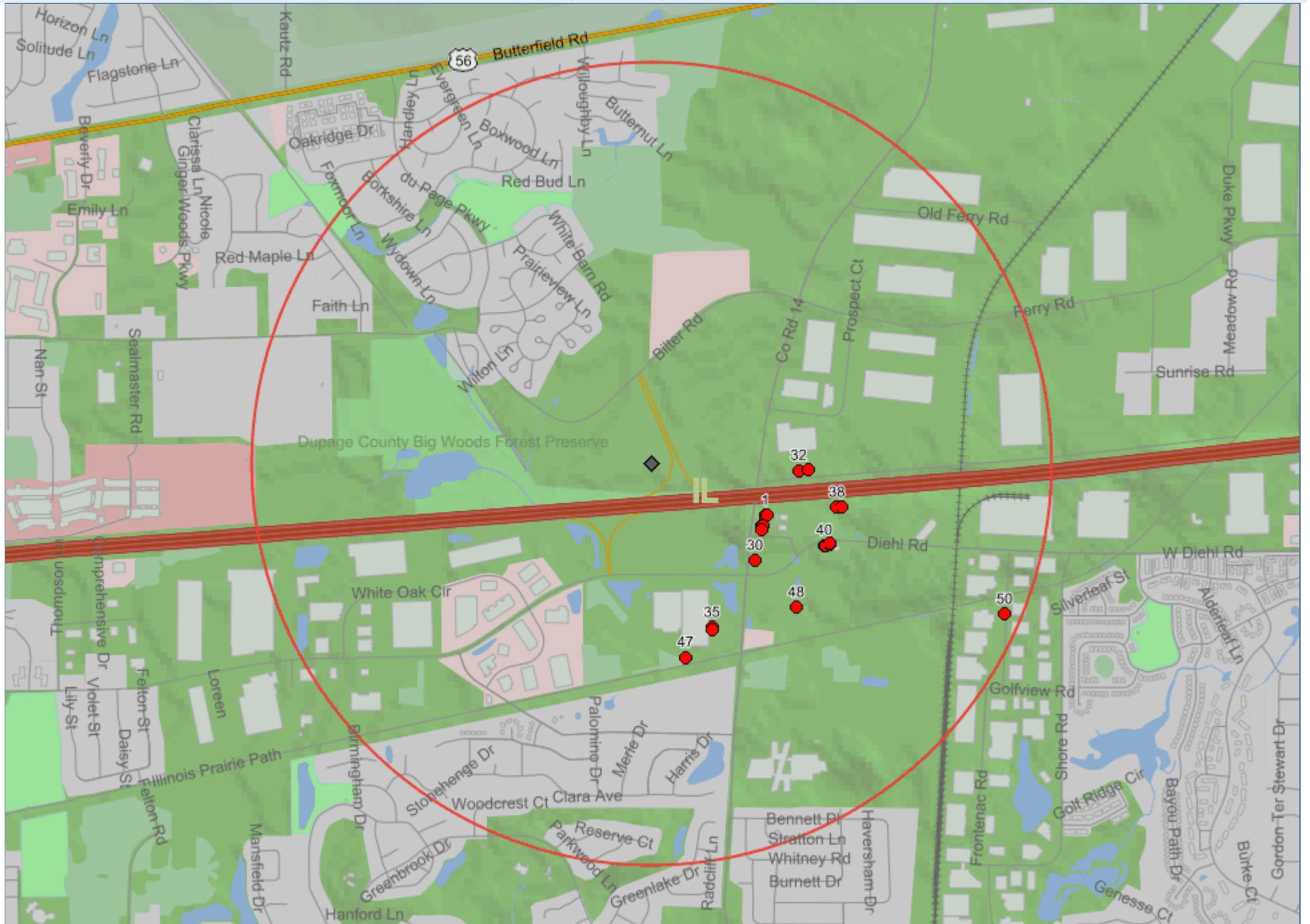


Search Structures - South tower 1 mile radius Biliter Rd

41.802138, -88.245083, radius 1 mi / 1.6 km



Search Structures - South tower 1 mile radius Bilter Rd

41.802138, -88.245083, radius 1 mi / 1.6 km

#	Dist	Type	Name	Coords	Height	Structure	Entity	Address
1	0.31 mi 0.5 km	TC	3262	41.800256 -88.239592	239 ft 72.85 m	Self Support	American Tower Corporation	31 W. 524 Diehl Rd., AURORA, IL, 60502-9493,...
2	0.31 mi 0.5 km	FAA	01-AGL-2543-OE	41.800304 -88.239555	200.13 ft 61 m		ATT WIRELESS SERVICES	NAPERVILLE, IL
3	0.31 mi 0.5 km	FAA	2001-AGL-130-OE	41.800304 -88.239555	200.13 ft 61 m		AMERICAN TOWER LP	NAPERVILLE, IL
4	0.31 mi 0.5 km	FAA	2007-AGL-6228-OE	41.800251 -88.239586	188.98 ft 57.6 m		AMERICAN TOWER CORP.	WARRENVILLE, IL
5	0.31 mi 0.5 km	FAA	2021-AGL-30868-OE	41.800251 -88.239586	240.16 ft 73.2 m		AMERICAN TOWERS LLC - AS	AURORA, IL
6	0.31 mi 0.5 km	FAA	2013-AGL-5025-OE	41.800251 -88.239586	225.07 ft 68.6 m		AMERICAN TOWERS, LLC	NAPERVILLE, IL
7	0.31 mi 0.5 km	FAA	2011-AGL-6420-OE	41.800251 -88.239586	226.05 ft 68.9 m		AMERICAN TOWER CORP.	WARRENVILLE, IL
8	0.31 mi 0.5 km	FAA	2009-AGL-3916-OE	41.800251 -88.239586	194.88 ft 59.4 m		AMERICAN TOWER CORP.	WARRENVILLE, IL
9	0.31 mi 0.5 km	FAA	2008-AGL-4955-OE	41.800251 -88.239586	188.98 ft 57.6 m		AMERICAN TOWER CORP.	WARRENVILLE, IL
10	0.31 mi 0.5 km	FAA	2013-AGL-10584-OE	41.800251 -88.239586	240.16 ft 73.2 m		AMERICAN TOWER	NAPERVILLE, IL
11	0.31 mi 0.5 km	FAA	2014-AGL-12544-OE	41.800251 -88.239586	240.16 ft 73.2 m		AMERICAN TOWER	NAPERVILLE, IL
12	0.31 mi 0.5 km	FAA	2013-AGL-10267-OE	41.800251 -88.239586	225.07 ft 68.6 m		AMERICAN TOWER	NAPERVILLE, IL
13	0.31 mi 0.5 km	FAA	2013-AGL-319-OE	41.800251 -88.239586	225.07 ft 68.6 m		AMERICAN TOWERS LLC	NAPERVILLE, IL
14	0.31 mi 0.5 km	FAA	2012-AGL-2966-OE	41.800251 -88.239586	225.07 ft 68.6 m		AMERICAN TOWER CORP.	WARRENVILLE, IL
15	0.31 mi 0.5 km	FAA	2012-AGL-62-OE	41.800251 -88.239586	226.05 ft 68.9 m		AMERICAN TOWER CORP.	WARRENVILLE, IL
16	0.31 mi 0.5 km	FAA	2003-AGL-7865-OE	41.800251 -88.239586	188.98 ft 57.6 m		AMERICAN TOWER #3262	WARRENSVILLE, IL
17	0.31 mi 0.5 km	FAA	2013-AGL-2607-OE	41.800251 -88.239586	225.07 ft 68.6 m		AMERICAN TOWERS LLC	NAPERVILLE, IL
18	0.31 mi 0.5 km	FAA	2013-AGL-173-OE	41.800251 -88.239586	225.07 ft 68.6 m		AMERICAN TOWER	NAPERVILLE, IL
19	0.31 mi 0.5 km	FCC	1281587	41.80025 -88.239583	238.85 ft 72.8 m	LTOWER	American Towers LLC	31 W. 524 Diehl Rd. (003262 / I-88 & Eola),...
20	0.31 mi 0.51 km	FAA	98-AGL-5824-OE	41.800304 -88.239502	200.13 ft 61 m		AMERICAN TOWER CORPORATION	AURORA, IL
21	0.31 mi 0.51 km	FAA	2016-AGL-16099-OE	41.799889 -88.239777	100.07 ft 30.5 m		CROWN CASTLE FOR SPRINT	NAPERVILLE, IL

Search Structures - South tower 1 mile radius Bilter Rd

41.802138, -88.245083, radius 1 mi / 1.6 km

#	Dist	Type	Name	Coords	Height	Structure	Entity	Address
22	0.31 mi 0.51 km	FAA	2021-AGL-29915-OE	41.799889 -88.239777	109.91 ft 33.5 m		CROWN CASTLE (MG)	NAPERVILLE, IL
23	0.31 mi 0.51 km	FAA	2017-AGL-7119-OE	41.799889 -88.239777	109.91 ft 33.5 m		CROWN CASTLE FOR SPRINT	NAPERVILLE, IL
24	0.32 mi 0.51 km	FAA	2012-AGL-6233-OE	41.799862 -88.239754	80.05 ft 24.4 m		CROWN CASTLE USA FOR SPRINT	AURORA, IL
25	0.32 mi 0.51 km	FAA	2011-AGL-4400-OE	41.799862 -88.239754	80.05 ft 24.4 m		CROWN CASTLE USA FOR SPRINT	AURORA, IL
26	0.32 mi 0.51 km	FAA	2016-AGL-3582-OE	41.799862 -88.239754	80.05 ft 24.4 m		CROWN CASTLE FOR SPRINT	AURORA, IL
27	0.32 mi 0.51 km	FAA	2016-AGL-12928-OE	41.799862 -88.239754	80.05 ft 24.4 m		CROWN CASTLE FOR SPRINT	AURORA, IL
28	0.32 mi 0.51 km	TC	875614	41.7999 -88.2397	65.5 ft 19.96 m	MONOPOLE	Crown Castle International	31 W 524 DIEHL RD, NAPERVILLE, IL, 60563,...
29	0.32 mi 0.51 km	FAA	1998-AGL-1572-OE	41.799751 -88.239777	80.05 ft 24.4 m		SPRINT PCS	AURORA, IL
30	0.35 mi 0.57 km	FCC	1299832	41.798639 -88.240083	350.07 ft 106.7 m	LTOWER	Pierce Broadband, LLC	31 W. 524 Diehl Road, Naperville, IL,...
31	0.35 mi 0.57 km	FAA	2016-AGL-724-OE	41.798637 -88.240082	357.94 ft 109.1 m		PIERCE BROADBAND	NAPERVILLE, IL
32	0.37 mi 0.59 km	FAA	2006-AGL-4965-OE	41.801888 -88.237968	299.87 ft 91.4 m		NICOR GAS	EOLA, IL
33	0.37 mi 0.59 km	FCC	1256058	41.801861 -88.237944	299.87 ft 91.4 m	TOWER	NICOR GAS COMPANY	East of Eola Road and north of Interstate 88,...
34	0.39 mi 0.63 km	FAA	2003-AGL-7118-OE	41.801945 -88.237503	299.87 ft 91.4 m		FIRST BROADCASTING MANAGEMENT, LLC	NAPERVILLE, IL
35	0.44 mi 0.7 km	FCC	1305893	41.796222 -88.242167	357.94 ft 109.1 m	LTOWER	CyrusOne LLC	2905 Diehl Road, Aurora, IL, 60502
36	0.44 mi 0.7 km	FAA	2018-AGL-2422-OE	41.796223 -88.242165	357.94 ft 109.1 m		CYRUSONE	AURORA, IL
37	0.44 mi 0.71 km	FAA	2017-AGL-4632-OE	41.796139 -88.242142	350.07 ft 106.7 m		CYRUS ONE	AURORA, IL
38	0.48 mi 0.77 km	FAA	2013-AGL-7316-OE	41.800556 -88.236115	328.08 ft 100 m		I-355 & 143RD LLC	NAPERVILLE, IL
39	0.48 mi 0.77 km	FCC	1045632	41.800556 -88.236111	299.87 ft 91.4 m	TOWER	I355 & 143rd, LLC	31 W 478 DIEHL RD, NAPERVILLE, IL, 60563
40	0.48 mi 0.77 km	FAA	75-GL-544-OE	41.799194 -88.236725	324.15 ft 98.8 m		BLANK	WARRENVILLE, IL
41	0.48 mi 0.77 km	FAA	1996-AGL-4189-OE	41.799194 -88.236725	313.98 ft 95.7 m		AT&T CORP	WARRENVILLE, IL
42	0.48 mi 0.77 km	TC		41.799167 -88.236667	305 ft 92.96 m	Lattice	AT&T Towers	2968 Diehl Road, Aurora, IL, 60502,...

Search Structures - South tower 1 mile radius Bilter Rd

41.802138, -88.245083, radius 1 mi / 1.6 km

#	Dist	Type	Name	Coords	Height	Structure	Entity	Address
43	0.49 mi 0.78 km	FAA	97-AGL-3920-OE	41.800583 -88.235886	299.87 ft 91.4 m		TRANSMISSIONS HOLDINGS INC	AURORA, IL
44	0.49 mi 0.79 km	FCC	1014809	41.79925 -88.236444	298.88 ft 91.1 m	TOWER	AT&T Corp	DIEHL ROAD, EOLA, IL, 60563
45	0.49 mi 0.79 km	FAA	2011-AGL-996-OE	41.799252 -88.236443	310.04 ft 94.5 m		AT&T CORP.	EOLA, IL
46	0.49 mi 0.79 km	FAA	2015-AGL-15198-OE	41.799252 -88.236443	310.04 ft 94.5 m		AT&T	EOLA, IL
47	0.49 mi 0.79 km	FAA	2016-AGL-6186-OE	41.795139 -88.243446	49.87 ft 15.2 m		COMMONWEALTH EDISON	AURORA, IL
48	0.51 mi 0.82 km	FCC	1304105	41.796944 -88.238083	194.88 ft 59.4 m	LTOWER	Scintel Tower Properties LLC	245 East Eola Rd., Aurora, IL, 60502
49	0.51 mi 0.82 km	FAA	2017-AGL-16340-OE	41.796944 -88.238083	199.15 ft 60.7 m		SCINTEL SOLUTIONS	AURORA, IL
50	0.96 mi 1.54 km	TC	IL-7117	41.7967 -88.228	22 ft 6.71 m	Indust	Global Tower Partners	801 S. Frontenac, Naperville, IL, 60563,...

SiteSync, © Wireless Applications Corp., 2024