

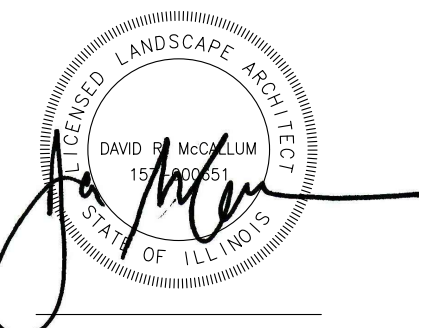
# Landscape Plan for Orchard Road Industrial, Lot 1

# Landscape Plan for Orchard Road Industrial, Lot 1

Orchard Road  
Aurora, Illinois



DAVID R. McCALLUM ASSOCIATES, INC.  
LANDSCAPE ARCHITECTS  
350 N. Milwaukee Avenue | Libertyville, Illinois 60068  
T 847.382.0209 | F 847.382.0294



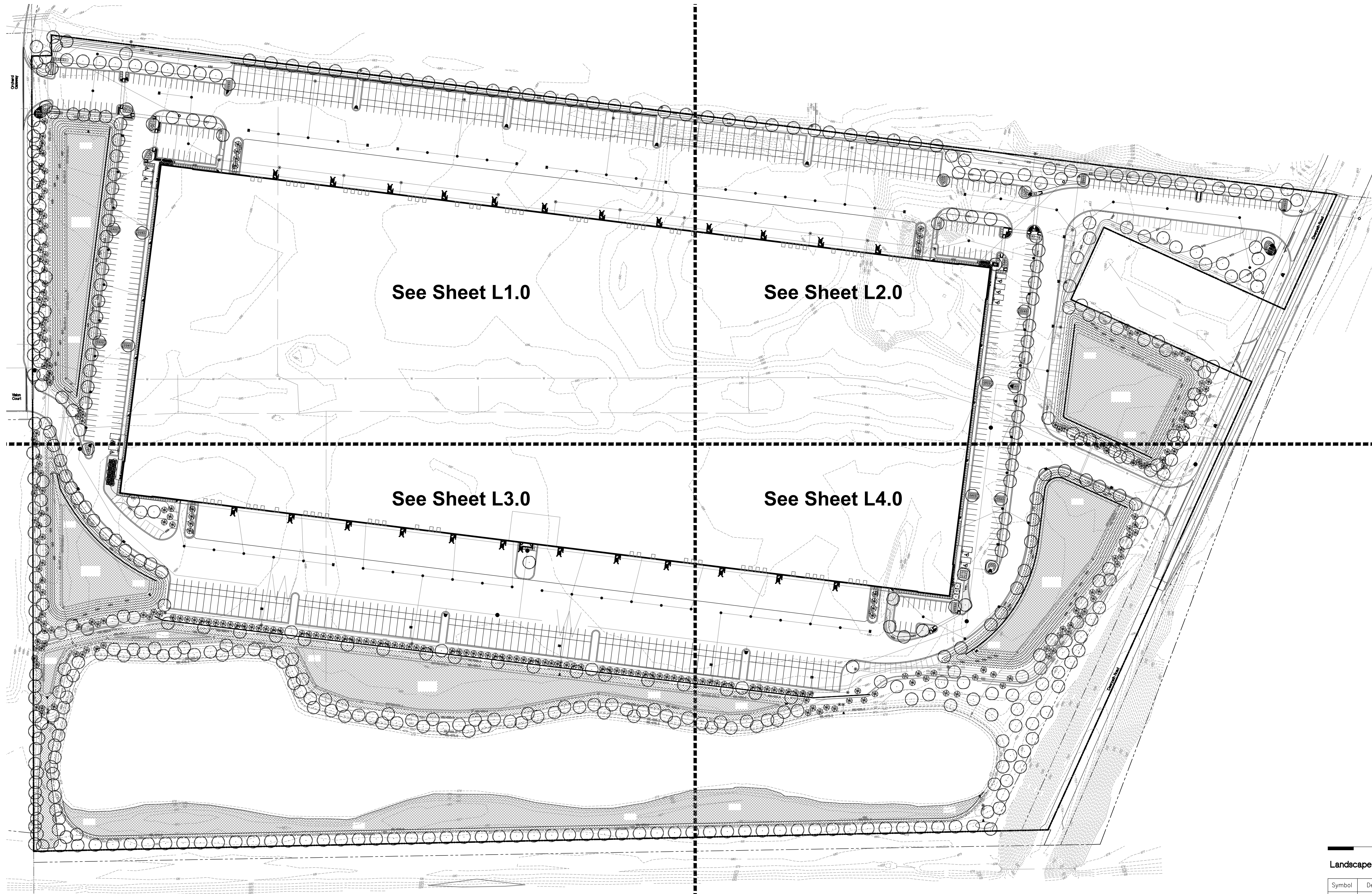
## Landscape Plan for Orchard Road Industrial, Lot 1

Petitioner: Panattoni Development Company  
Developer: 6250 N. River Road Suite 4050  
Rosemont, Illinois 60018

Per City Review	Comments	Date
5	Per City Review Comments	12.04.18
4	Per City Review Comments	11.14.18
3	Per City Review Comments	10.02.18
2	For Review	09.11.18
1	For Review	09.06.18

Mark Description Date  
Issuance

Number 483018  
Scale 1" = 100'  
0 20 40 60 80 100 200  
North  
File 4830FFB8  
Sheet L0.0



### Plant List

Shade Trees		Botanical Name	Common Name	Remarks	Percentage
ACF	46 2.5"	Acer x freemanii 'Autumn Blaze'	Autumn Blaze Freeman Maple	BB	8.68
ACR	39 2.5"	Acer rubrum 'Red Sunset'	Red Sunset Red Maple	BB	7.36
AES	41 2.5"	Aesculus x arnoldiana 'Autumn Splendor'	Autumn Splendor Horsechestnut	BB	7.74
CAR	37 2.5"	Carpinus caroliniana	American Hornbeam	BB	6.98
CCO	49 2.5"	Celtis occidentalis	Common Hackberry	BB	9.25
COR	23 2.5"	Corylus colurna	Turkish Filbert	BB	4.34
GPS	32 2.5"	Ginkgo biloba 'Princeton Sentry'	Princeton Sentry Ginkgo	BB	6.04
GTS	29 2.5"	Gleditsia triacanthos var. 'inermis' 'Skyline'	Skyline Thornless Honeylocust	BB	5.47
GYD	52 2.5"	Gymnocladus dioica	Kentucky Coffeetree	BB	9.81
OST	51 2.5"	Ostrya virginiana	Ironwood/American Hophornbeam	BB	9.82
QUB	36 2.5"	Quercus bicolor	Swamp White Oak	BB	6.79
QUC	31 2.5"	Quercus muhlenbergii	Chinquapin Oak	BB	5.85
QUR	35 2.5"	Quercus rubra	Red Oak	BB	6.00
ULM	29 2.5"	Ulmus 'New Horizon'	New Horizon Elm	BB	5.47

Ornamental Trees		Botanical Name	Common Name	Remarks	Percentage
AMC	3 8'	Amelanchier canadensis	Shadblow Serviceberry	BB/Clump	21.4
BET	3 8'	Betula nigra	River Birch	BB/Clump	21.4
CER	8'	Cercis canadensis	Eastern Redbud	BB/Clump	14.3
MAS	2 8'	Magnolia stellata 'Royal Star'	Royal Star Magnolia	BB/Clump	14.3
MLS	4 2.5"	Molus sargentii	Sargent Crabapple	BB	28.6

Evergreen Trees		Botanical Name	Common Name	Remarks	Percentage
ABC	41 6'	Abies concolor	Concolor Fir	BB	15.4
JUN	60 6'	Juniperus virginiana	Eastern Redcedar	BB	18.8
PFA	36 6'	Picea pungens 'Fat Albert'	Fat Albert Blue Spruce	BB	13.5
PGD	33 6'	Picea glauca 'Densata'	Black Hills Spruce	BB	12.4
PIA	32 6'	Picea abies	Norway Spruce	BB	12.0
PIC	35 6'	Picea pungens	Colorado Green Spruce	BB	13.2
PSM	39 6'	Pseudotsuga menziesii	Douglas Fir	BB	14.7

Deciduous Shrubs		Botanical Name	Common Name	Remarks	Percentage
ARM	86 24"	Aronia melanocarpa Low Scope 'UC165'	Low Scope Mound Chokeberry	BB	14.63
CLE	55 24"	Celastrus triflorus 'Hummingbird'	Hummingbird Summersweet	BB	9.35
COT	19 30"	Coloniaea acutifolia	Peking Cotonaster	BB	3.23
FVB	53 24"	Forsythia viridissima 'Bronvensis'	Bronx Dwarf Forsythia	BB	9.01
HFB	36 24"	Hydrangea paniculata 'Bobo'	Bobo Hydrangea	BB	6.12
HVI	43 24"	Hydrangea arborescens 'Incrediball'	Incrediball Smooth Hydrangea	BB	7.32
ROM	38 24"	Rhus alpinum 'Green Mound'	Green Mound Alpine Currant	BB	6.12
RHO	55 24"	Rhus aromatica 'Gra-Low'	Gra-Low Fragrant Sumac	BB	9.35
RKO	60 #3	Rosa 'RADcon'	Pink Knock Out Rose	Container	10.21
SLE	42 24"	Spiraea japonica 'Little Princess'	Little Princess Spiraea	BB	7.14
SYB	42 24"	Syringa Bloomerang Dark Purple 'SMSJB'	Bloomerang Dark Purple Lilac	BB	7.14
VBM	18 24"	Viburnum dentatum 'Chistom'	Blue Multiflora Arrowwood Viburnum	BB	3.06
WEJ	43 24"	Weigela florida 'Mistral'	Mistral Weigela	BB	7.32

Evergreen Shrubs		Botanical Name	Common Name	Remarks	Percentage
BUX	46 24"	Buxus x microphylla 'Glenca'	ChicagoLand Green Boxwood	BB	34.6
JCS	69 24"	Juniperus chinensis var. sargentii	Sargent Juniper	BB	51.1
TMD	19 24"	Toxus x media 'Densiformis'	Dense Yew	BB	14.3

Perennials and Ornamental Grasses		Botanical Name	Common Name	Remarks	Percentage
ACH	44 #1	Achillea 'Moonshine'	Moonshine Yarrow	Container	14.72
ALL	35 #1	Allium 'Summer Beauty'	Summer Beauty Allium	Container	11.70
DAI	44 #1	Diarrhiza gratiopoliensis 'Firewatch'	Firewatch Cheddar Pink	Container	12.72
HHR	67 #1	Hemerocallis 'Happy Returns'	Happy Returns Daylily	Container	22.41
HLC	64 #1	Hemerocallis 'Little Grapette'	Little Grapette Daylily	Container	21.40
SCH	23 #1	Schizanthus luteus	Little Bluestem	Container	7.69
SED	22 #1	Sedum SunSparker 'Dazzleberry'	Dazzleberry SunSparker Sedum	Container	7.36

### Landscape Data Table: Planting Material Key

Symbol	Description	Total
○	Canopy Trees	530
○	Evergreen Trees	266
○	Understory Trees	14
○	Deciduous Shrubs	588
○	Evergreen Shrubs	133
●	Perennials and Ornamental Grasses	299
▨	Groundcover	0
▨	Turf   Seed + blanket	350,358 sq. ft.
▨	Turf   Sod	5454 sq. ft.

### Landscape Data Table: CTEs Provided

CTE Value	Count Provided	Total CTEs Provided
Canopy Trees	1	530
Evergreen Trees	3	266
Understory Trees	3	14
Deciduous Shrubs	20	588
Evergreen Shrubs	20	133
TOTAL:	1531	659.25

### Emergent Seed Mix

Botanical Name	Common Name	Quantity
Carex comosa	Bristly Sedge	0.375 pounds/acre
Echinochloa crusgalli	Barnyard Grass	2.000 pounds/acre
Echinochloa polystachya	Marsh Spike Rush	0.063 pounds/acre
Echinochloa species	Spike Rush	0.063 pounds/acre
Glyceria grandis	Reed Manna Grass	0.031 pounds/acre
Junca species	Wetland Rush (species)	0.188 pounds/acre
Lernia oryzoides	Rice Cut Grass	0.500 pounds/acre
Scirpus acutus	Hard Stem Bulrush	0.063 pounds/acre
Scirpus fluviatilis	River Bulrush	0.125 pounds/acre
Scirpus pungens	Charmmaker's Rush	0.125 pounds/acre
Scirpus validus	Great Bulrush	0.250 pounds/acre
Sparganium eurycarpum	Bur Reed	1.000 pounds/acre
Zizania aquatica	Wild Rice	1.000 pounds/acre

### Flowers + Other Broadleaves

Botanical Name	Common Name	Quantity
Aceris colatum	Sweet Flag	0.250 pounds/acre
Alisma subcordatum	Common Water Plantain	0.094 pounds/acre
Cephalanthus occidentalis	Butter Bush	0.125 pounds/acre
Hibiscus species	Rosemallow (various)	0.063 pounds/acre
Iris virginica shrevei	Blue Flag	0.250 pounds/acre
Peltandra virginica	Arrow Arum	1.000 pounds/acre
Portulacaria cordata	Pickering Weed	0.063 pounds/acre
Sagittaria latifolia	Common Arrowhead	0.500 pounds/acre
Sparganium eurycarpum	Common Bur Reed	1.000 pounds/acre

Matrix: Permanent Matrix 6.128 pounds/acre  
Note: Seed Mix | Emergent Seed Mix (Wet Seeded) | Genesis Nursery, Inc. | National Seed Seed shall be kept moist and refrigerated until sown. Application shall be limited to spring planting.

### Geese Barrier Control

The Landscape Contractor shall install and maintain temporary geese protection fencing and netting to protect all native seeds during the period of establishment and sufficient growth. Fencing shall consist of 6-foot 2"x2" wood stakes 48" above grade set 8' on center with 48" high, 2"x2" mesh chicken wire fencing around the detention basin perimeter and native seeded area. 100-pound monofilament line shall be set 18" above the detention basin surface arranged on a 10-foot grid, flagged with red ribbon tape 30-feet on center.

### Blended Prairie Seed Mix (Short Grass Prairie Seed Mix + Wet Mesic Prairie Grass Mix)

Botanical Name	Common Name	Oz./Acre	Total lbs./Acre
Andropogon scoparius	Little Bluestem	120	
Bouteloua curtipendula	Side Oats Gramma	28	
Elymus canadensis	Canada Wild Rye	12	
Total Grasses: 160 10			
Forbs			
Botanical Name	Common Name	Oz./Acre	Total lbs./Acre
Asclepias tuberosa	Butterfly Milkweed	8	
Carex diandra	Prairie Careopsis	3	
Dalea purpurea	Purple Prairie Clover	3	
Echinochloa polystachya	Pink Purple Coneflower	8	
Echinochloa purpurea	Purple Coneflower	8	
Pendemonium digitalis	Foxglove Beard Tongue	2	
Physostegia virginiana	Obedient Plant	1.5	
Rudbeckia hirta	Black-Eyed Susan	4.5	
Tradescantia virginiana	Spikebart	1.5	
Total Forbs: 40 2.5			
Total Grasses and Forbs: 200 12.5			
Temporary Cover Crop			
Botanical Name	Common Name	Oz./Acre	Total lbs./Acre
Avena sativa	Common Oats	160	10

Applied at the rate of 25 lbs. per acre.

### Wet Mesic Prairie Grass Mix

Botanical Name	Common Name	Lbs./Acre
Colanagrostis condensens	Blue Joint Grass	0.0155
Carex annectens xanthocarpa	Yellow Sedge	0.0215
Carex bebbii	Bebb's Sedge	0.300
Carex bicknellii	Bicknell's Sedge	0.0625
Carex moeistis	Field Oval Sedge	0.125
Carex normalis	Normal Sedge	0.0315
Carex scoparia	Broom Sedge	0.250
Carex vulpinoidea	Fox Sedge	0.125
Elymus canadensis	Canadian Wild Rye	0.500
Elymus virginicus	Virginia Wild Rye	1.000
Glyceria stricta	Manna Grass	0.500
Junca spp.	Rush Species	0.0155
Lernia oryzoides	Rice Cut Grass	0.125
Panicum virgatum	Switch Grass	0.125
Poa palustris	Marsh Blue Grass	0.500
Schizachyrium scoparium	Little Bluestem	1.000
Scirpus atrovirens	Dark Green Rush	0.250
Sporobolus heterolepis	Prairie Dropseed	0.125

Total Permanent Matrix: 5,0815 Lbs./Acre, 5,0815 Lbs./Acre  
Cover with NAG 575BN Erosion Control Blanket (biodegradable).



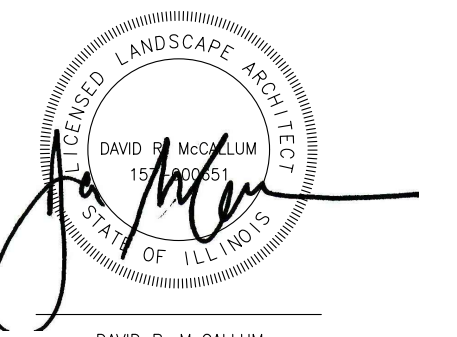
Landscape Plan for Orchard Road Industrial, Lot 1

Landscape Plan for Orchard Road Industrial, Lot 1

Orchard Road  
Aurora, Illinois



DAVID R. McCALLUM ASSOCIATES, INC.  
LANDSCAPE ARCHITECTS  
350 N. Milwaukee Avenue | Libertyville, Illinois 60048  
T 847.382.2019 | F 847.382.2124



DAVID R. McCALLUM  
Registered Landscape Architect  
State of Illinois No. 157-000651  
Expiration Date 08.31.19

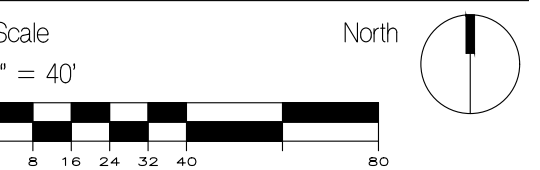
Landscape Plan for Orchard Road Industrial, Lot 1

Petitioner:  
Developer: Panattoni Development Company  
6250 N. River Road Suite 4050  
Rosemont, Illinois 60018

Mark	Description	Date
5	Per City Review Comments	12.04.18
4	Per City Review Comments	11.14.18
3	For Review	10.02.18
2	For Review	09.11.18
1	For Review	09.06.18

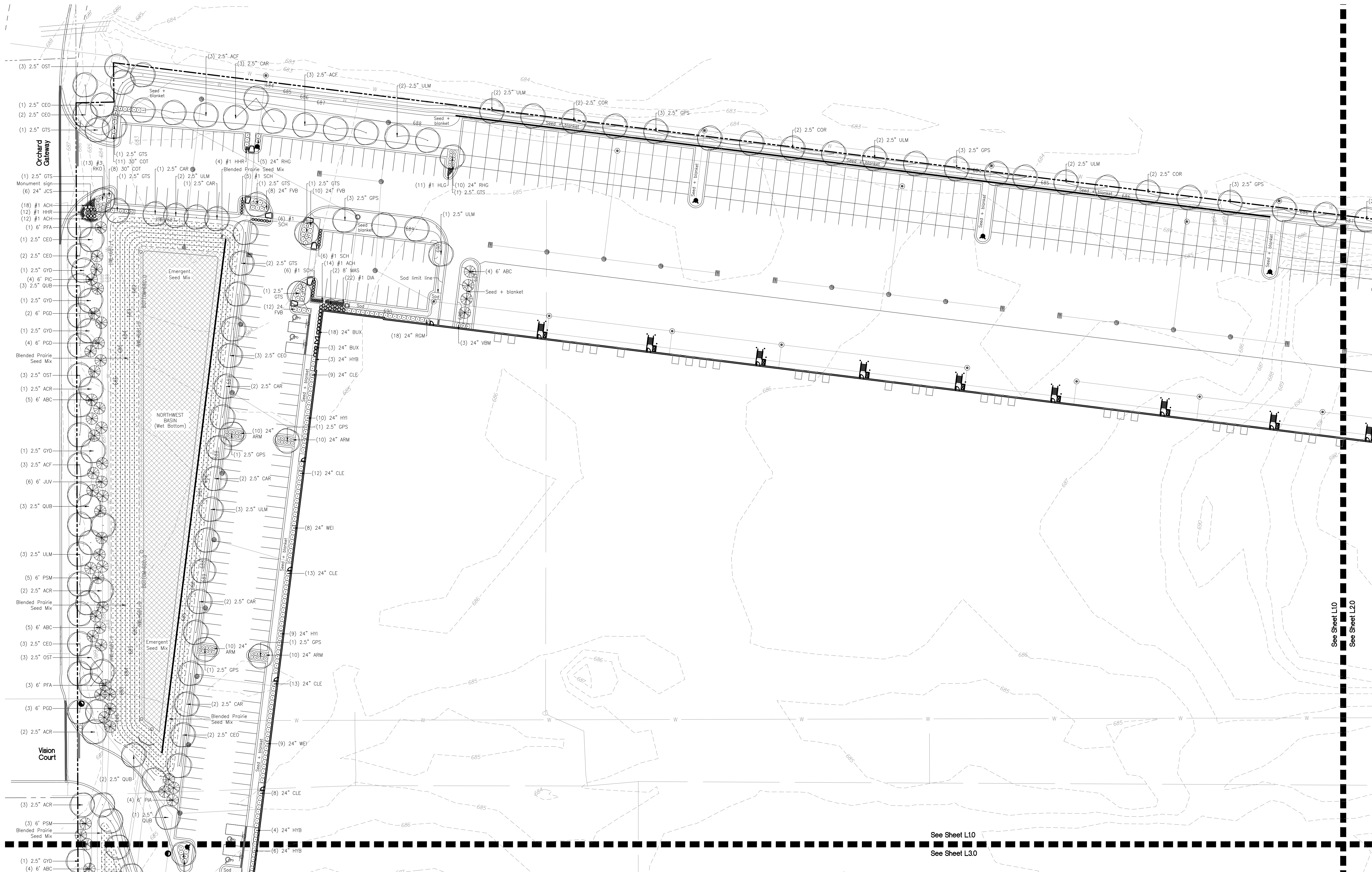
Issuance

Number  
483078



File  
4830FP8A

Sheet  
L10



See Sheet L10  
See Sheet L20

See Sheet L10  
See Sheet L30



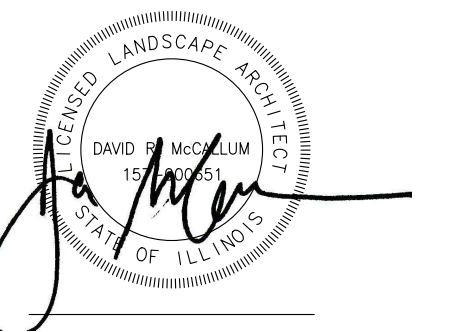
Landscape Plan for Orchard Road Industrial, Lot 1

Landscape Plan  
for  
Orchard Road  
Industrial, Lot 1

Orchard Road  
Aurora, Illinois



DAVID R. McCALLUM ASSOCIATES, INC.  
LANDSCAPE ARCHITECTS  
350 N. Milwaukee Avenue | Libertyville, Illinois 60048  
T 847.382.2209 | F 847.382.2204

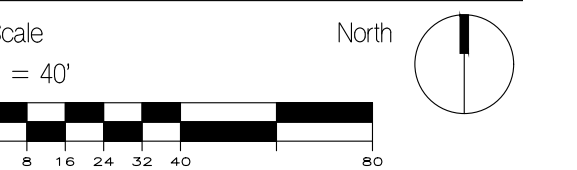


Landscape Plan  
for  
Orchard Road  
Industrial, Lot 1

Petitioner:  
Developer: Panattoni Development Company  
6250 N. River Road Suite 4050  
Rosemont, Illinois 60018

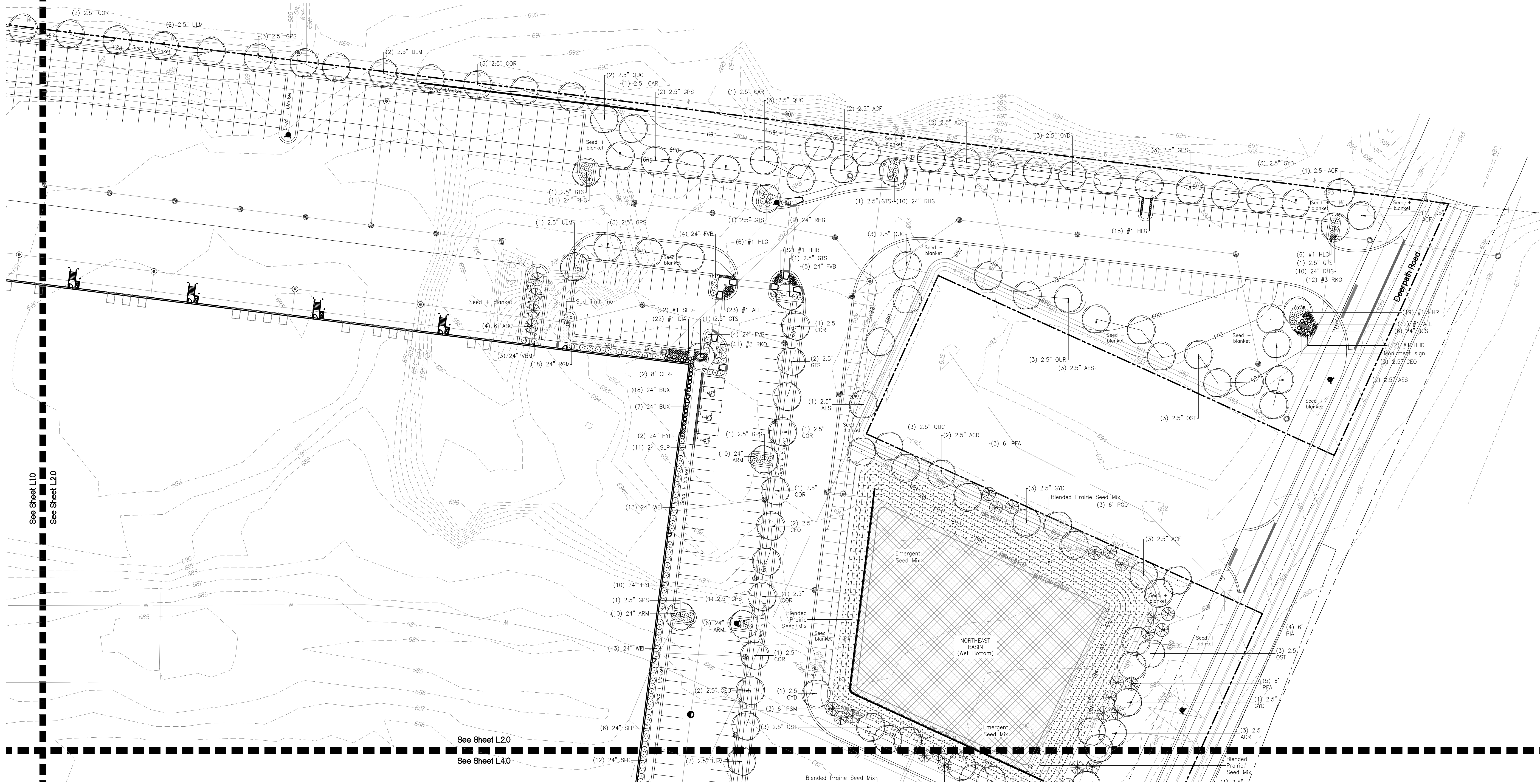
Mark	Description	Date
5	Per City Review Comments	12.04.18
4	Per City Review Comments	11.14.18
3	For Review	10.02.18
2	For Review	09.11.18
1	For Review	09.06.18

Issuance  
Number  
483078



File  
4830FP8A

Sheet  
L20



See Sheet L10  
See Sheet L20

See Sheet L20  
See Sheet L40

Blended Prairie Seed Mix<sub>1</sub>



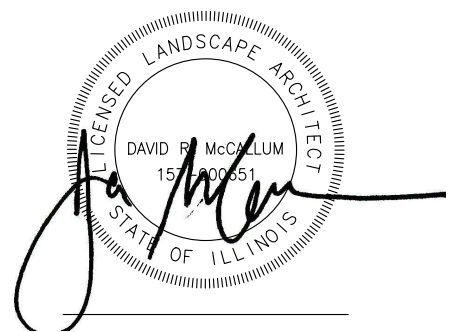
Landscape Plan for Orchard Road Industrial, Lot 1

Landscape Plan for Orchard Road Industrial, Lot 1

Orchard Road  
Aurora, Illinois



DAVID R. McCALLUM ASSOCIATES, INC.  
LANDSCAPE ARCHITECTS  
350 N. Milwaukee Avenue | Libertyville, Illinois 60048  
T 847.382.2039 | F 847.382.2254



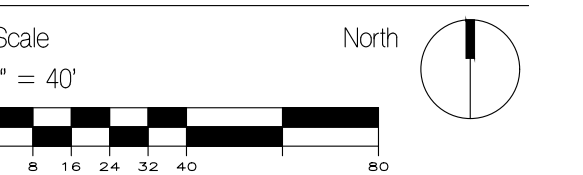
Landscape Plan for Orchard Road Industrial, Lot 1

Petitioner:  
Developer: Panattoni Development Company  
6250 N. River Road Suite 4050  
Rosemont, Illinois 60018

Mark	Description	Date
5	Per City Review Comments	12.04.18
4	Per City Review Comments	11.14.18
3	For Review	10.02.18
3	For Review	09.11.18
2	For Review	09.06.18

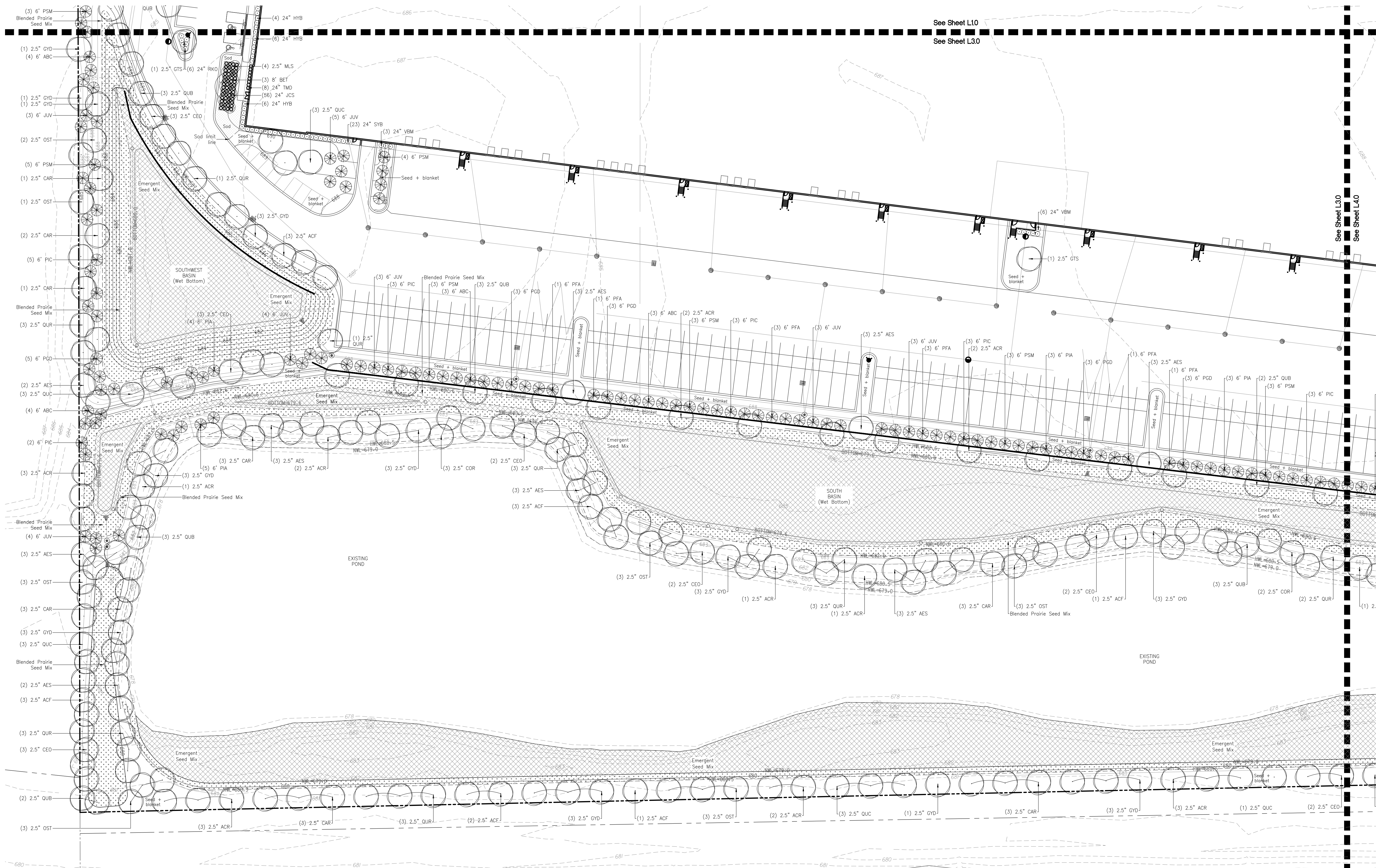
Issuance

Number  
483078



File  
4830FF8A

Sheet  
L30





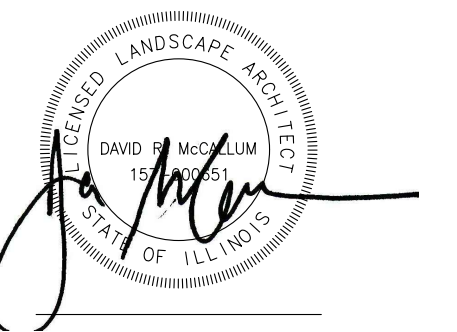
Landscape Plan for Orchard Road Industrial, Lot 1

Landscape Plan  
for  
Orchard Road  
Industrial, Lot 1

Orchard Road  
Aurora, Illinois



DAVID R. McCALLUM ASSOCIATES, INC.  
LANDSCAPE ARCHITECTS  
350 N. Milwaukee Avenue | Libertyville, Illinois 60048  
T 847.382.2039 | F 847.382.2034



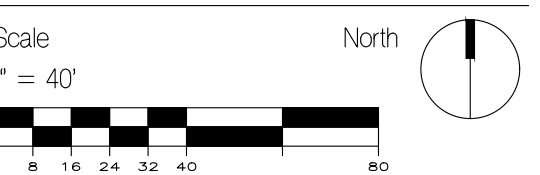
Landscape Plan  
for  
Orchard Road  
Industrial, Lot 1

Petitioner:  
Developer: Panattoni Development Company  
6250 N. River Road Suite 4050  
Rosemont, Illinois 60018

Mark	Description	Date
5	Per City Review Comments	12.04.18
4	Per City Review Comments	11.14.18
3	For Review	10.02.18
2	For Review	09.11.18
1	For Review	09.06.18

Issuance

Number  
483078



File  
483078A

Sheet  
L40

