



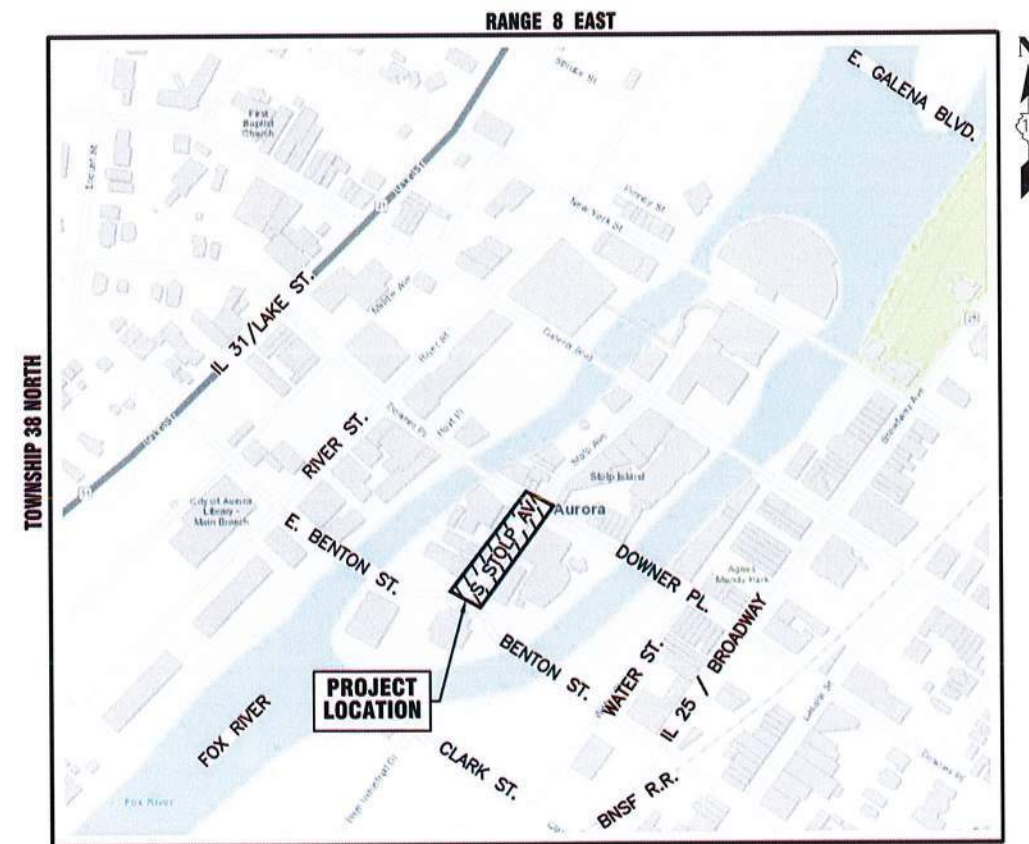
PLANS FOR THE PROPOSED

SOUTH STOLP AVENUE STREETSCAPE IMPROVEMENTS

BETWEEN W. BENTON ST. AND W. DOWNER PLACE

LEGEND		
	EXISTING	PROPOSED
SANITARY SEWER	—) —	—) —
STORM SEWER	— > —	— > —
WATER MAIN	— W —	— W —
FORCE MAIN	— FM —	— FM —
UNDERDRAIN	— UD —	— UD —
OVERHEAD LINE	— OH —	— OH —
CABLE TV LINE	— CATV —	— CATV —
GAS LINE	— GAS —	— GAS —
TELEPHONE LINE	— T —	— T —
ELECTRIC LINE	— E —	— E —
FENCE	— X —	— X —
MAJOR CONTOUR	— — —	— — —
MINOR CONTOUR	— — —	— — —
HIGH WATER LEVEL	— HWL —	— HWL —
NORMAL WATER LEVEL	— NWL —	— NWL —
PAVEMENT FLOW DIRECTION	— — —	— — —
SPOT ELEVATION	— 682.6 TC —	— 682.6 TC —
TOP OF CURB ELEVATION	— 682.6 T/F —	— 682.6 T/F —
TOP OF FOUNDATION ELEVATION	— 682.6 FL —	— 682.6 FL —
GUTTER ELEVATION	— 682.6 P —	— 682.6 P —
PAVEMENT ELEVATION	— 682.6 P —	— 682.6 P —
EDGE OF PAVEMENT	— — —	— — —
CURB AND GUTTER	— — —	— — —
RIGHT-OF-WAY	— — —	— — —
SANITARY MANHOLE	— — —	— — —
SANITARY CLEANOUT	— — —	— — —
STORM MANHOLE	— — —	— — —
CATCH BASIN	— — —	— — —
INLET	— — —	— — —
FLARED END SECTION	— — —	— — —
FIRE HYDRANT	— — —	— — —
VALVE VAULT	— — —	— — —
VALVE BOX	— — —	— — —
STREET LIGHT	— — —	— — —
POWER POLE	— — —	— — —
STREET SIGN	— — —	— — —
ELECTRIC BOX	— — —	— — —
TELEPHONE BOX	— — —	— — —
TELEPHONE MANHOLE	— — —	— — —
B-BOX	— — —	— — —
GAS VALVE	— — —	— — —
TRAFFIC HANDHOLE	— — —	— — —
ELECTRIC HANDHOLE	— — —	— — —
TREE W/ DIAMETER	— — —	— — —
MAILBOX	— — —	— — —
STRUCTURE TO BE REMOVED	— — —	— — —
PLUG EXISTING PIPE	— — —	— — —
UTILITY CROSSING	— — —	— — —
EXPLORATORY EXCAVATION LOCATION	— — —	— — —
SANITARY MANHOLE REHABILITATION NUMBER	— — —	— — —
SOIL BORING LOCATION WITH IDENTIFICATION NUMBER & ELEVATION	— — —	— — —

JULY 2025
GENERALLY LOCATED IN THE SW 1/4 OF SEC. 22, T38N, R8E



KANE COUNTY - AURORA TOWNSHIP
THIRD PRINCIPAL MERIDIAN

LOCATION MAP
NOT TO SCALE

INDEX OF SHEETS

- 1 COVER SHEET
- 2 DEMOLITION PLAN
- 3 SITE PLAN
- 4 GRADING PLAN
- 5 - 6 STANDARD DETAILS

Dial 811 or 1-800-892-0123



Know what's below.
Call before you dig.

J.U.L.I.E.
JOINT UTILITY LOCATION INFORMATION FOR EXCAVATION
811 OR 1-800-892-0123

CONSTRUCTION AND MAINTENANCE TO BE IN
ACCORDANCE WITH ALL APPLICABLE REGULATORY
REQUIREMENTS AND STANDARDS

PRINTED BY THE AUTHORITY
OF THE CITY OF AURORA

PLANS PREPARED BY:

CITY OF AURORA

DEPARTMENT OF PUBLIC WORKS - ENGINEERING DIVISION
77 S. BROADWAY AVE, AURORA, IL 60505

PHONE: 630-256-3200 FAX: 630-256-3229

REVISIONS:

DESIGNED BY: KTM	DRAWN BY: AHB	CHECKED BY: KTM	APPROVED BY: KTM	HORIZ. SCALE: N/A	DATE: JULY 2025
------------------	---------------	-----------------	------------------	-------------------	-----------------

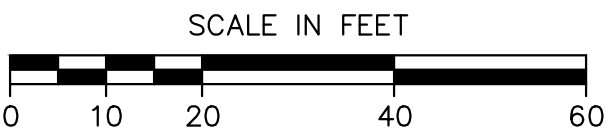
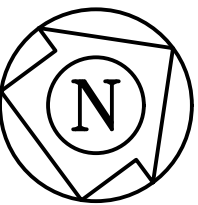
Stamp

ILLINOIS REGISTERED PROFESSIONAL

ENGINEER No.

LICENSE EXPIRES





- NOTE:
1. SAW CUTTING SHALL BE INCIDENTAL TO REMOVAL ITEMS.
 2. GAP BETWEEN NEW CURB AND REMOVED PAVEMENT LIMITS SHALL BE FILLED WITH CONCRETE UP TO 2" BELOW FINISHED GRADE. TASK SHALL BE PAID FOR AS CLASS D PATCHES , NSO 8".
 3. CONTRACTOR SHALL BE RESPONSIBLE FOR THE DISPOSAL OF HARDSCAPE (CONCRETE, BRICK, PAVEMENT, CURB & GUTTER) ITEMS OFFSITE INCLUDED IN THE REMOVAL COST. ADDITIONAL EXCAVATION NEEDED FOR NEW PLANTING BEDS (2' BELOW BACK OF CURB ELEVATION) WILL BE PAID FOR USING EXCAVATION, SPECIAL PAY ITEM. SPOILS TO BE TAKEN TO COA WATER & SEWER MAINTENANCE DIVISION AT 649 S. RIVER STREET, OR 2185 LIBERTY ST WITH ENTRANCE ON EAST NEW YORK STREET.
 4. CONTRACTOR SHALL INSTALL PEDESTRIAN DETOUR ROUTE SIGNAGE.

PLOT DATE: 7/24/2025 9:53 AM LAST SAVED BY: Hernandez, P. ENGINEERING/CAPITAL IMPROVEMENT PROJECTS/STOLP AVE STREETSCAPE/STOLP AVE STREETSCAPE CS-SP-SP-GP-STP.DWG



CITY OF AURORA
ENGINEERING DIVISION
2185 LIBERTY STREET
AURORA, ILLINOIS 60502

REVISIONS:

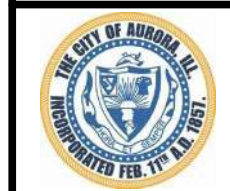
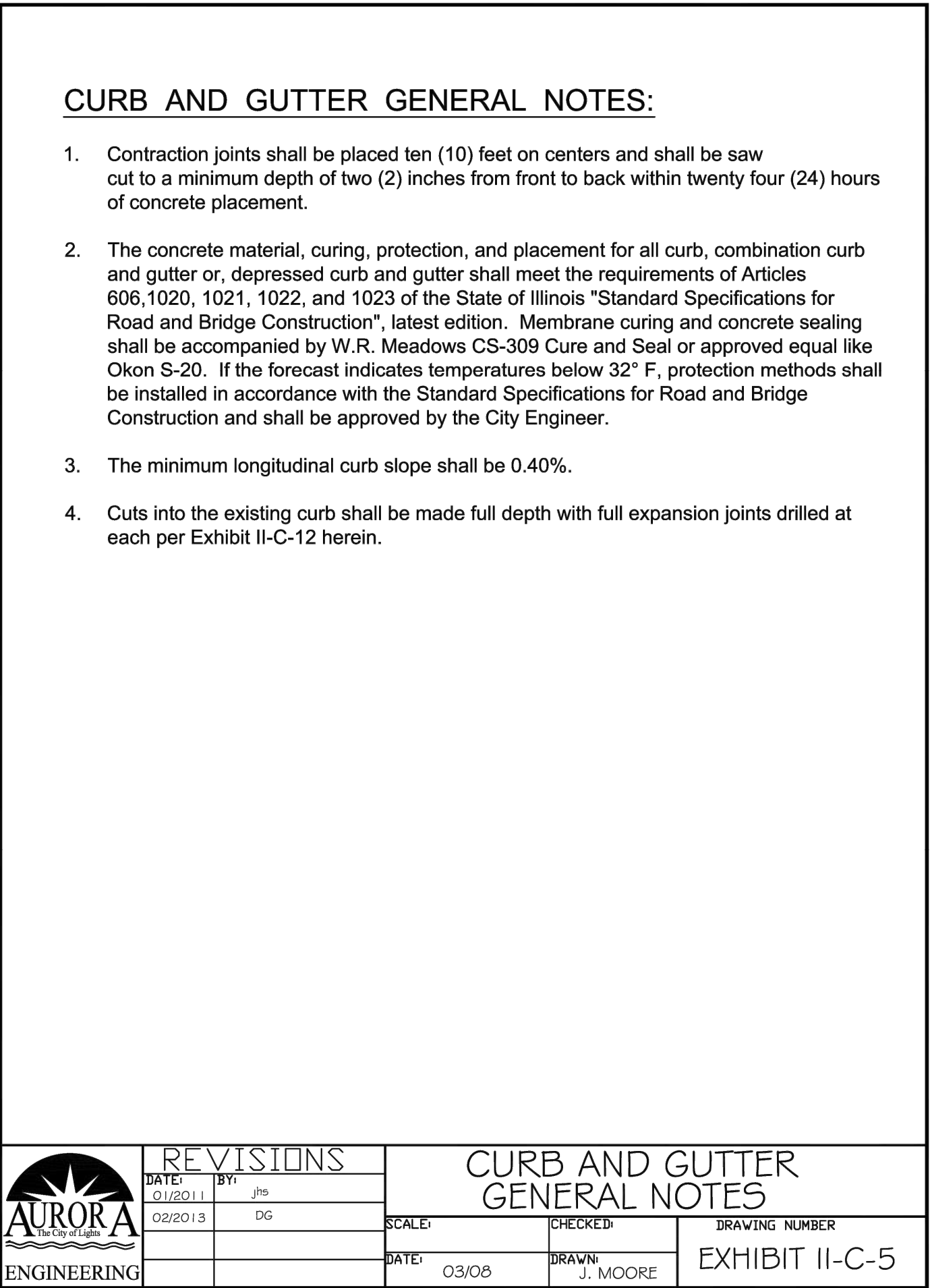
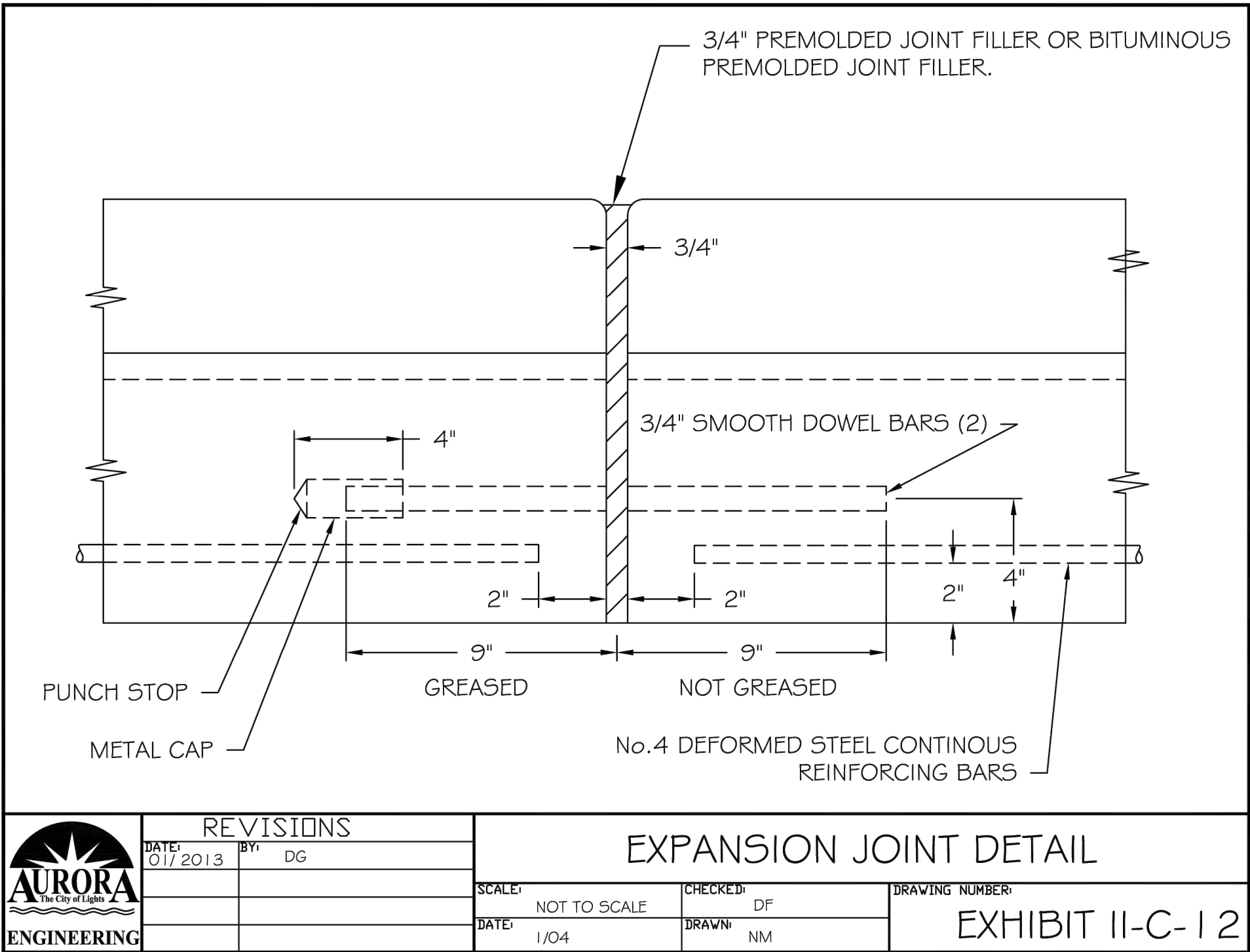
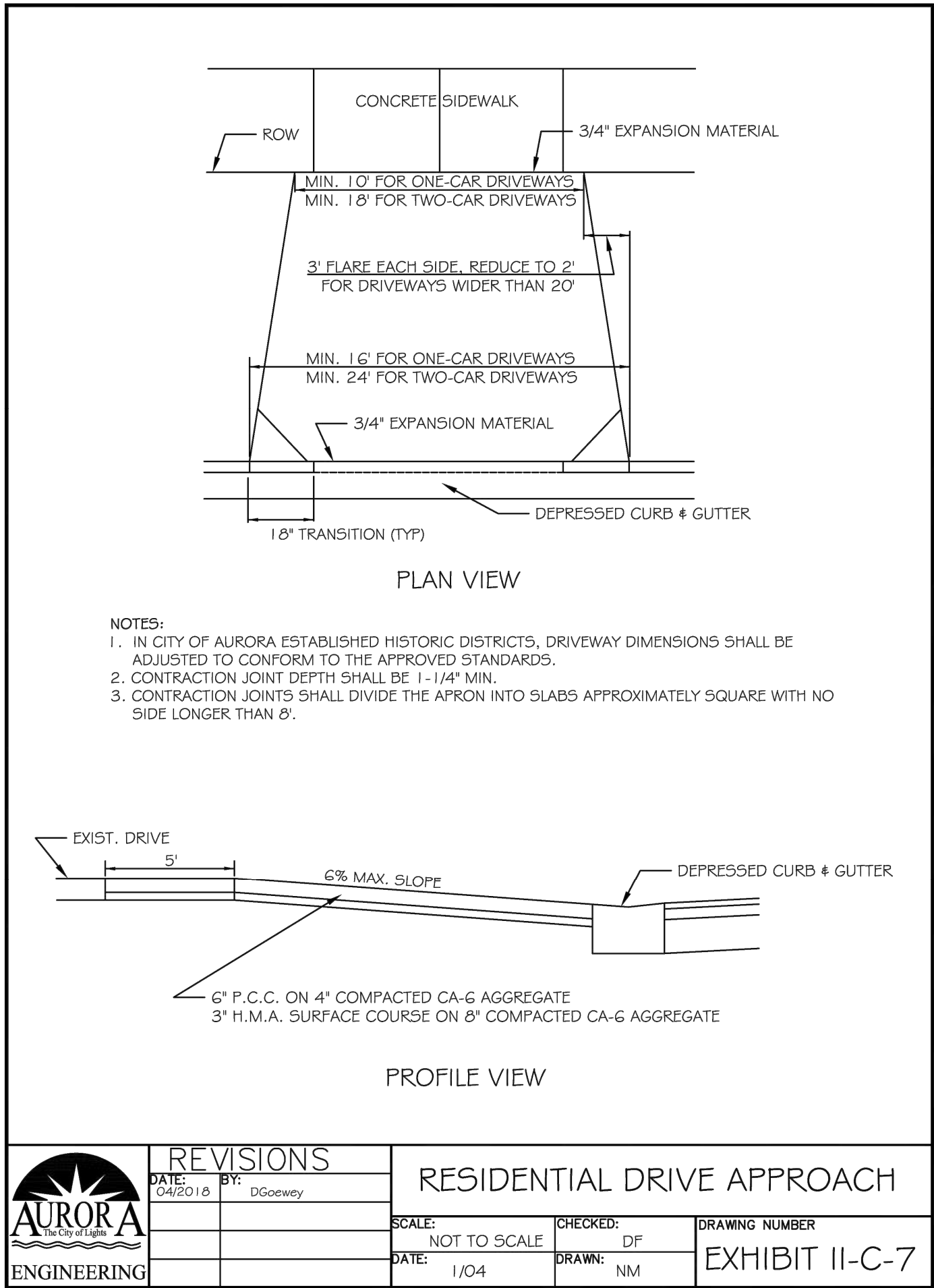
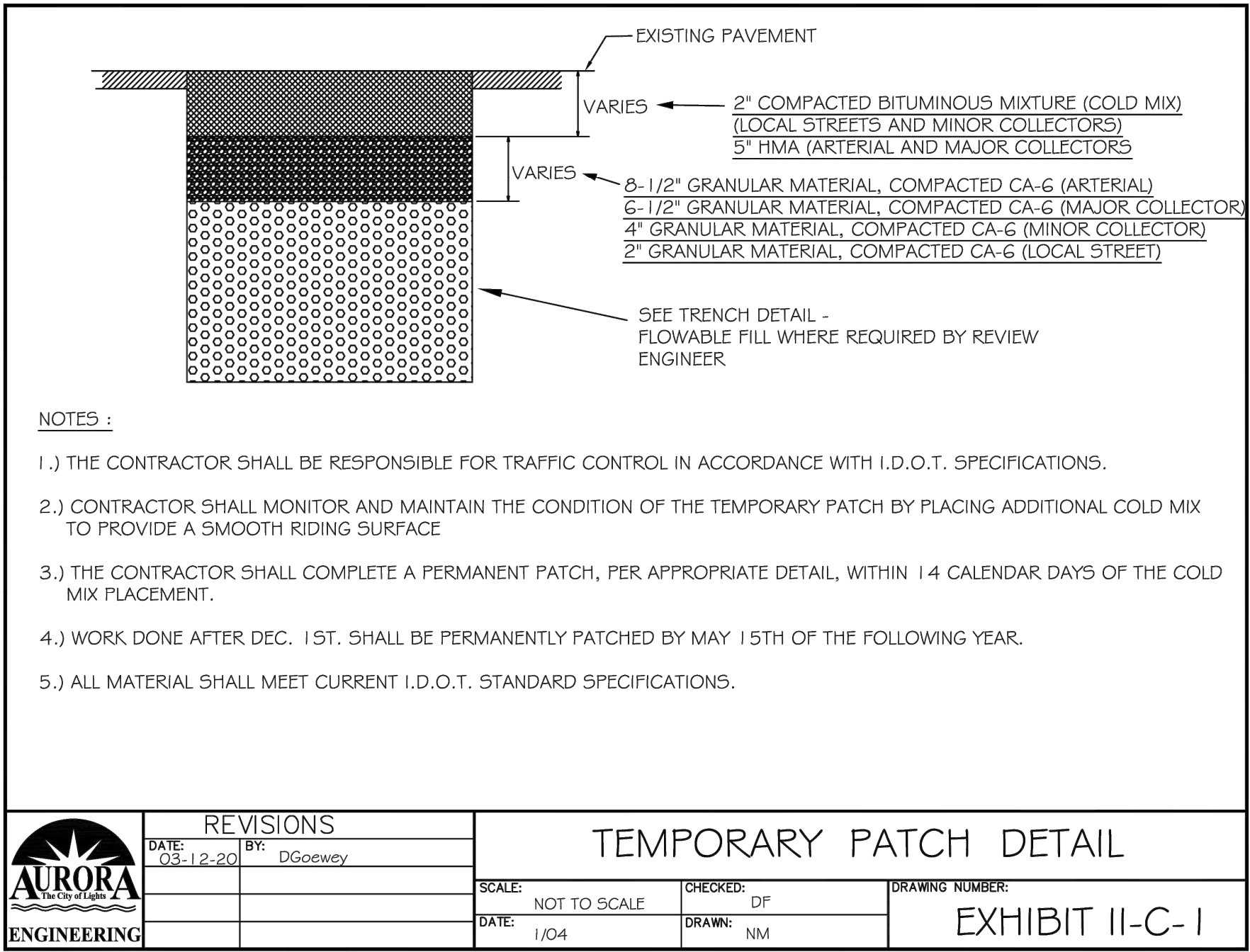
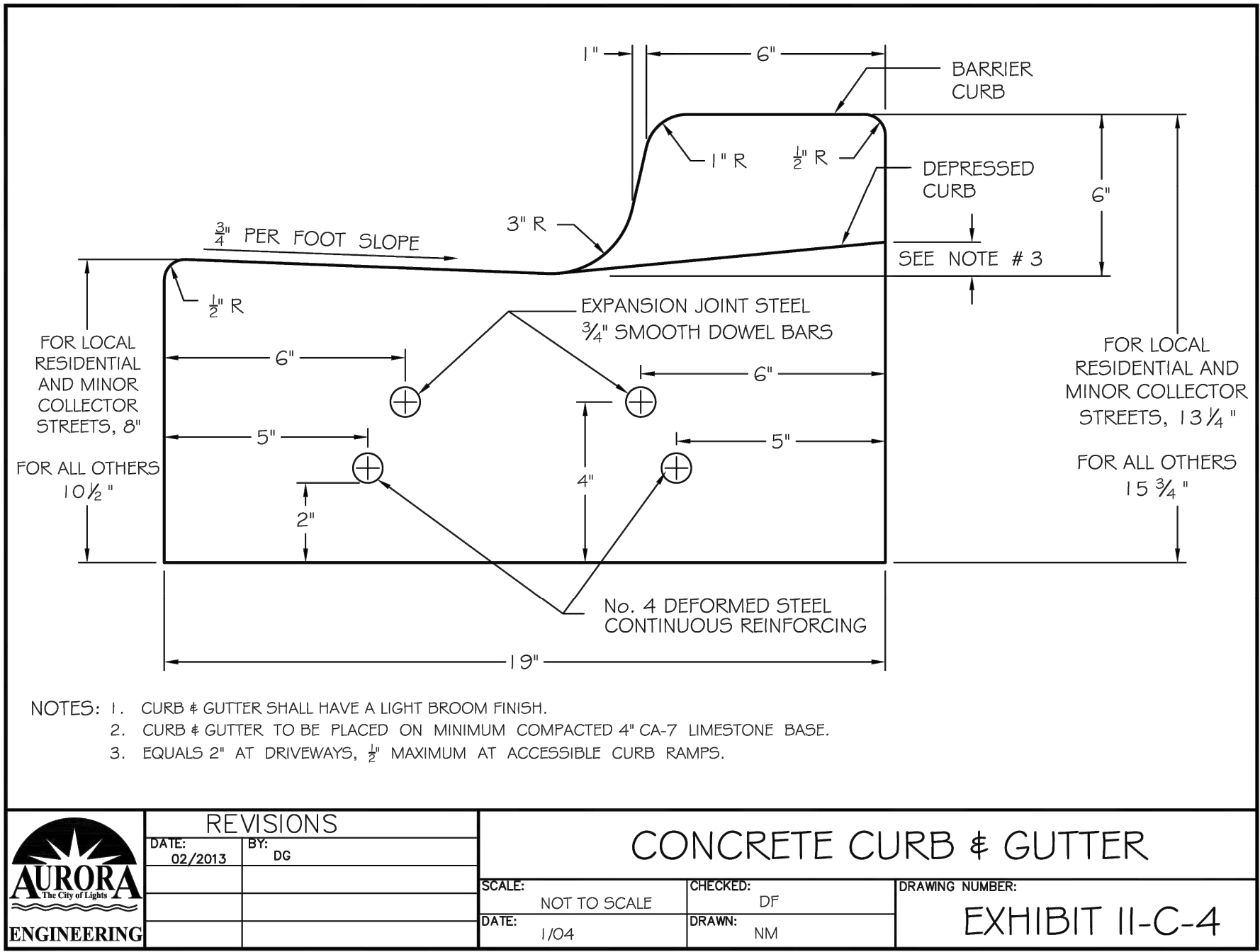
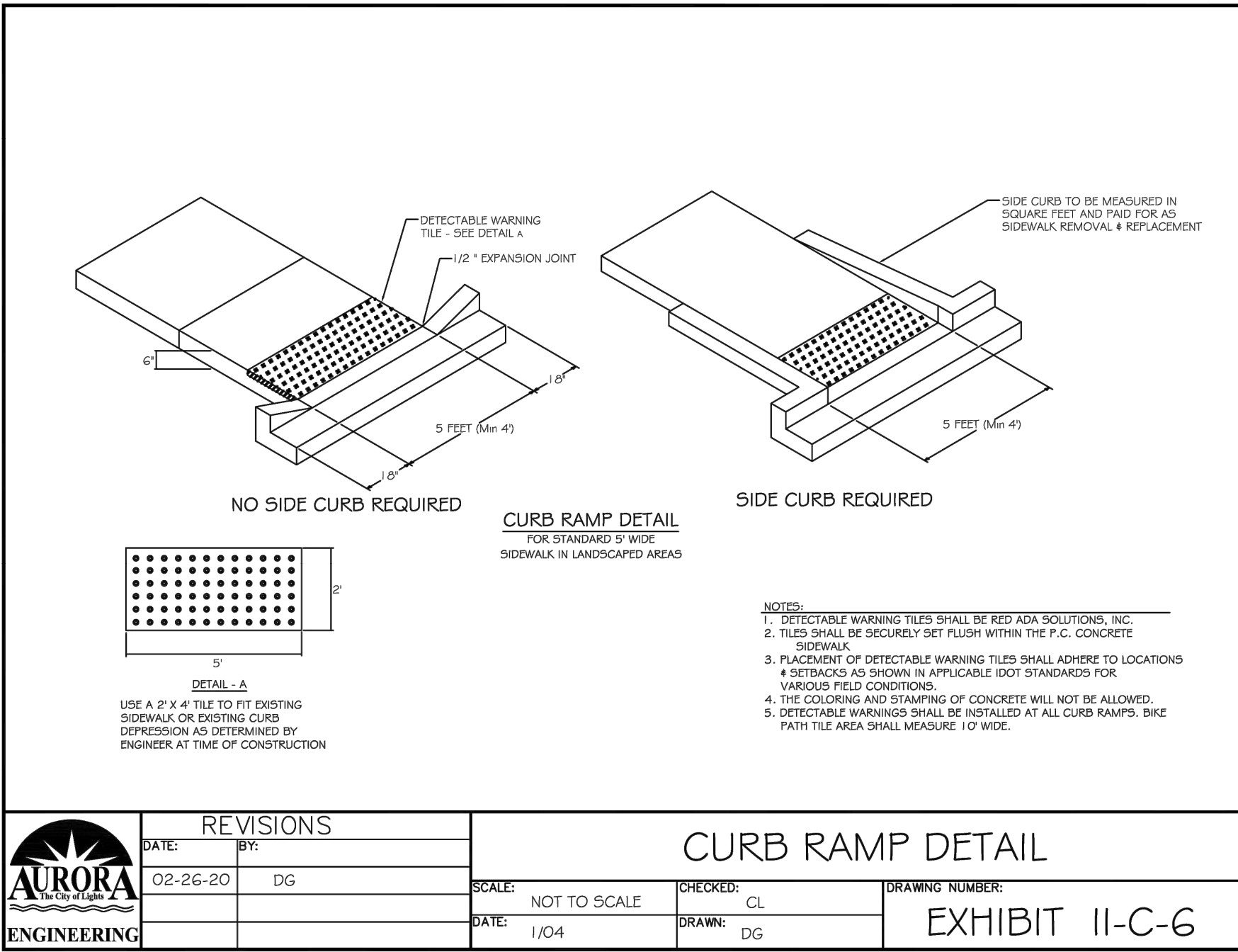
DESIGNED BY:	KM	CHECKED BY:	KM	SCALE:	1" = 20'
DRAWN BY:	AHB	APPROVED BY:	KM	DATE:	7/2025

PROJECT

SHEET TITLE

S STOLP AVE STREETSCAPE
DEMOLITION PLAN

SHEET NUMBER
2
TOTAL SHEETS
6



CITY OF AURORA
ENGINEERING DIVISION
77 SOUTH BROADWAY
AURORA, ILLINOIS 60505

REVISIONS:

DESIGNED BY:	KM	CHECKED BY:	KM	SCALE:	N/A
DRAWN BY:	MH	APPROVED BY:	KM	DATE:	5/2025

PROJECT

S STOLP AVE STREETSCAPE

SHEET TITLE

STANDARD DETAILS

SHEET NUMBER

5

TOTAL SHEETS

6

PLOT DATE 7/24/2025 9:53 AM LAST SAVED BY Hernandez P:\ENGINEERING\CAPITAL IMPROVEMENT PROJECTS\STOLP AVE STREETScape\DRAWING\FINAL DRAWINGS\STOLP & EBENTON - DETAILS.DWG

DANDY DEWATERING BAG™ PLAN INSERT

The Dandy Dewatering Bag™ is not intended for any other use and should not be used for any other purpose.

AVAILABLE IN VARIOUS SHAPES AND SIZES FOR SEDIMENT CONTAINMENT

DANDY DEATERING BAG

TIE DOWN STRAP

WATER PUMP

PUMP DISCHARGE HOSE

FLOW

FILTERED WATER

The Dandy Dewatering Bag™ is designed to control sediment discharge in dewatering applications where water is being pumped.

Installation

1. Lifting straps, not included, should be placed under the Dandy Dewatering Bag™ to facilitate removal after use.

2. Place the Dandy Dewatering Bag™ on a level stabilized area over dense vegetation/straw, or Gravel (if increased drainage surface area is needed) or as detailed in plans.

3. Insert discharge hose from pump into the Dandy Dewatering Bag a minimum of six inches (6") and tightly secure with attached strap to prevent water from flowing out of the unit without being filtered.

4. Replace the unit when one half (1/2) full of sediment or when sediment has reduced the flow rate of the pump discharge to an impractical rate.

Maintenance

Remove and dispose of the sediment in a manner satisfactory to the engineer/inspector or in one of the following ways:

1. Remove the unit and sediment from environmentally sensitive area and waterways. At the approved disposal site open or silt unit, remove sediment and grade smoothly into existing topography. Dispose of the Dandy Dewatering Bag™ no longer in use, at an appropriate recycling or solid waste facility.

2. Bury unit on site; remove visible fabric and seed.

DANDY PRODUCTS, INC.

2011 HARRISBURG PIKE, SUITE R

GROVE CITY, OHIO 43123

1-800-591-2284

(local) 614-875-2284

FAX: 614-875-6305

E-MAIL: dandy@dandyproducts.com

www.dandyproducts.com

SILT FENCE PLAN

Filter Fabric

5' Max
(Typ)

Fastener - Min. No. 10 Gage Wire
4 Per Post Required. (Typ.)

2' Min

18" Min
(Typ)

ELEVATION

Filter Fabric

Direction Of Flow

Undisturbed Ground Line

6" Min

6" Min

Compacted Backfill

FABRIC ANCHOR DETAIL

NOTES:

1. Temporary sediment fence shall be installed prior to any grading work in the area to be protected. They shall be maintained throughout the construction period and removed in conjunction with the final grading and site stabilization.

2. Filter fabric shall meet the requirements of material specification 592 Geotextile Table 1 or 2, Class I with equivalent opening size of at least 30 for nonwoven and 50 for woven.

3. Fence posts shall be either standard steel post or wood post with a minimum cross-sectional area of 3.0 sq. in.

REFERENCE

Project

Designed

Checked


Approved

Date

Date

Date

Date

 NRCS

Natural Resource Conservation Service

STANDARD DWG. NO.

IL-620

SHEET 1 OF 2

DATE 11-20-01

SILT FENCE - SPLICING TWO FENCES

Filter Fabric

Step 1

Posts

Filter Fabric

Step 2

Step 3

ATTACHING TWO SILT FENCES

1. Place the end post of the second fence inside the end post of the first fence.

2. Rotate both posts at least 180 degrees in a clockwise direction to create a tight seal with the fabric material.

3. Cut the fabric near the bottom of the stakes to accommodate the 6" flap.

4. Drive both posts a minimum of 18 inches into the ground and bury the flap.

5. Compact backfill (particularly at splices) completely to prevent stormwater piping.

REFERENCE

Project

Designed

Checked


Approved

Date

Date

Date

Date

 NRCS

Natural Resource Conservation Service

STANDARD DWG. NO.

IUM-561D

SHEET 1 OF 1

DATE 01-11-11

INLET PROTECTION - PAVED AREAS
DROP-IN PROTECTION

GRATE

CASTING

SUPPORT SYSTEM WITH LIFT HANDLES

SEDIMENT BAG/FILTER

INLET STRUCTURE

OVERFLOW AREA

SEE DETAIL ABOVE

GRATE

COVER

CASTING

SUPPORT SYSTEM WITH LIFT HANDLES

SEDIMENT BAG/FILTER

INLET STRUCTURE

STORM SEWER

REFERENCE

Project

Designed

Checked


Approved

Date

Date

Date

Date



STANDARD DWG. NO.

IUM-561D

SHEET 1 OF 1

DATE 01-11-11

KANE-DUPAGE SOIL AND WATER CONSERVATION DISTRICT
STANDARD NOTES

UNLESS OTHERWISE INDICATED, ALL VEGETATIVE AND STRUCTURAL EROSION AND SEDIMENT CONTROL PRACTICES WILL BE CONSTRUCTED ACCORDING TO MINIMUM STANDARDS AND SPECIFICATIONS IN THE ILLINOIS URBAN MANUAL REVISED FEBRUARY 2002.

THE KANE-DUPAGE SOIL AND WATER CONSERVATION DISTRICT(KDSWCD) MUST BE NOTIFIED ONE WEEK PRIOR TO THE PRE-CONSTRUCTION CONFERENCE, ONE WEEK PRIOR TO THE COMMENCEMENT OF LAND DISTURBING ACTIVITIES, AND ONE WEEK PRIOR TO THE FINAL INSPECTION.

A COPY OF THE APPROVED EROSION AND SEDIMENT CONTROL PLAN SHALL BE MAINTAINED ON THE SITE AT ALL TIMES.

PRIOR TO COMMENCING LAND DISTURBING ACTIVITIES IN AREAS OTHER THAN INDICATED ON THESE PLANS (INCLUDING BUT NOT LIMITED TO, ADDITIONAL PHASES OF DEVELOPMENT AND OFF-SITE BORROW OR WASTE AREAS) A SUPPLEMENTARY EROSION CONTROL PLAN SHALL BE SUBMITTED TO THE OWNER FOR REVIEW BY THE KDSWCD.

THE CONTRACTOR IS RESPONSIBLE FOR INSTALLATION OF ANY ADDITIONAL EROSION CONTROL MEASURES NECESSARY TO PREVENT EROSION AND SEDIMENTATION AS DETERMINED BY THE KDSWCD.

DURING DEWATERING OPERATIONS, WATER WILL SHALL BE PUMPED INTO SEDIMENT BASINS OR SILT TRAPS. DEWATERING DIRECTLY INTO FIELD TILES OR STORM WATER STRUCTURES IS PROHIBITED.

IT IS THE RESPONSIBILITY OF THE LANDOWNER AND/OR GENERAL CONTRACTOR TO INFORM AND SUB-CONTRACTOR(S) WHO MAY PERFORM WORK ON THIS PROJECT, OF THE REQUIREMENTS IN IMPLEMENTING AND MAINTAINING THESE EROSION CONTROL PLANS AND THE NATIONAL POLLUTANT DISCHARGE ELIMINATION SYSTEM (NPDES) PERMIT REQUIREMENTS SET FORTH BY THE ILLINOIS EPA.

ALL DROP INLETS ON OR ADJACENT TO THE SITE MUST HAVE A SEDIMENT TRAPPING OR CONTAINMENT DEVICE INSTALLED DURING CONSTRUCTION ACTIVITIES.

ALL ADJACENT STREETS SHALL BE KEPT CLEAR OF DEBRIS, INSPECTED DAILY, AND CLEANED WHEN NECESSARY.

ALL EROSION CONTROL MEASURES SHALL BE INSPECTED WEEKLY AND AFTER EACH RAINFALL EVENT OF 0.5" OR MORE.

IN AREAS WHERE WORK IS COMPLETE, PERMANENT STABILIZATION SHALL OCCUR WITHIN 7 DAYS OF COMPLETION, AND IN AREAS WHERE WORK HAS TEMPORARILY CEASED FOR 21 DAYS OR MORE, TEMPORARY STABILIZATION SHALL OCCUR BY THE 14TH DAY AFTER WORK HAS CEASED.

THE CONDITION OF THE CONSTRUCTION SITE FOR WINTER SHUTDOWN SHALL BE ADDRESSED EARLY IN THE FALL GROWING SEASON SO THAT SLOPES AND OTHER BARE EARTH AREAS MAY BE STABILIZED WITH TEMPORARY AND/OR PERMANENT VEGETATIVE COVER FOR PROPER EROSION AND SEDIMENT CONTROL. ALL OPEN AREAS THAT ARE TO REMAIN IDLE THROUGHOUT THE WINTER SHALL RECEIVE TEMPORARY EROSION CONTROL MEASURES INCLUDING TEMPORARY SEEDING, MULCHING, AND/OR EROSION CONTROL BLANKET PRIOR TO THE END OF THE FALL GROWING SEASON. THE AREAS TO BE WORKED BEYOND THE END OF THE GROWING SEASON MUST INCORPORATE SOIL STABILIZATION MEASURES THAT DO NOT RELY ON VEGETATIVE COVER SUCH AS EROSION CONTROL BLANKET AND HEAVY MULCHING.

SOIL STABILIZATION TABLE

REQUIRED FOR ALL DISTURBED GRASS AREAS

CITY OF AURORA MIX

24.93% ASAP PERENNIAL RYEGRASS

24.46% CADDIESHACK PERENNIAL RYGRASS

24.33% GOALKEEPER PERENNIAL RYEGRASS

12.37% GERONIMO KENTUCKY BLUEGRASS

12.29% KENTUCKY BLUEGRASS (VARIETY NOT STATED)

1.34% INERT MATTER

0.26% CROP

0.00% WEED

261 LBS./AC.

MULCH: MECHANICALLY CRIMPED STRAW OR HYDRO-MULCH

CONTRACTOR'S CERTIFICATION:

I CERTIFY UNDER PENALTY OF LAW THAT I UNDERSTAND THE TERMS AND CONDITIONS OF THE GENERAL NATIONAL POLLUTION DISCHARGE ELIMINATION SYSTEM (NPDES) PERMIT (ILR10) THAT AUTHORIZES THE STORM WATER DISCHARGES ASSOCIATED WITH INDUSTRIAL ACTIVITY FROM THE CONSTRUCTION SITE IDENTIFIED AS PART OF THIS CERTIFICATION

SIGNED

DATE

PRINT NAME

NAME OF COMPANY

CITY OF AURORA
ENGINEERING DIVISION
77 SOUTH BROADWAY
AURORA, ILLINOIS 60505

REVISIONS:

DESIGNED BY: KM
DRAWN BY: MH

CHECKED BY: KM
APPROVED BY: KM

SCALE: N/A
DATE: 5/2025

PROJECT

S STOLP AVE STREETScape

SHEET TITLE

STANDARD DETAILS

SHEET NUMBER

6

TOTAL SHEETS

6