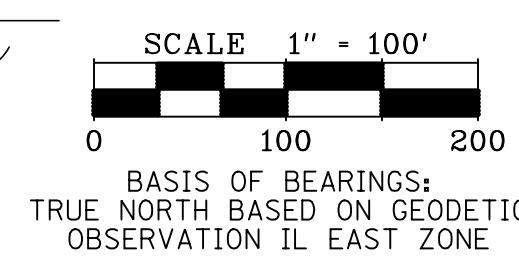
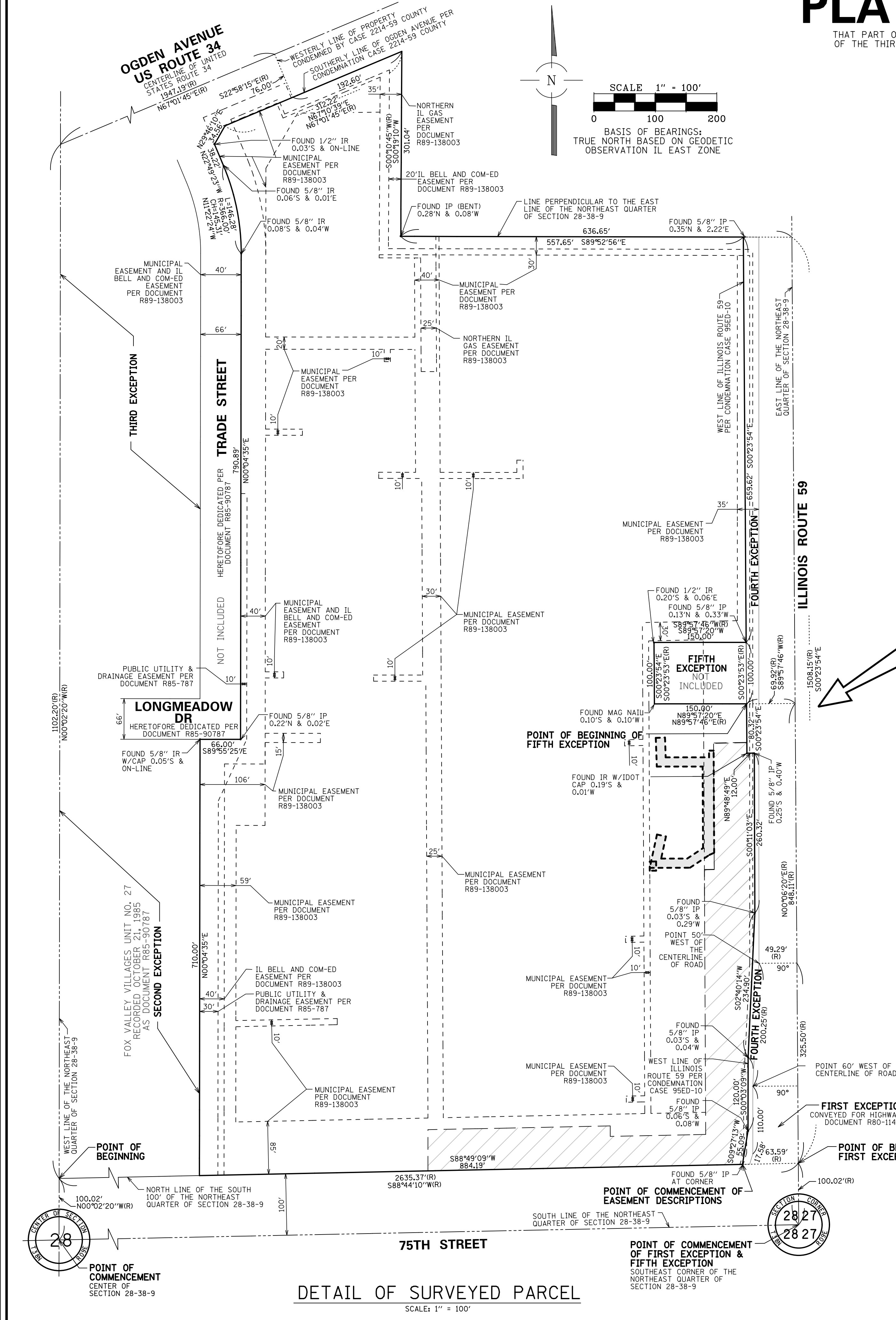


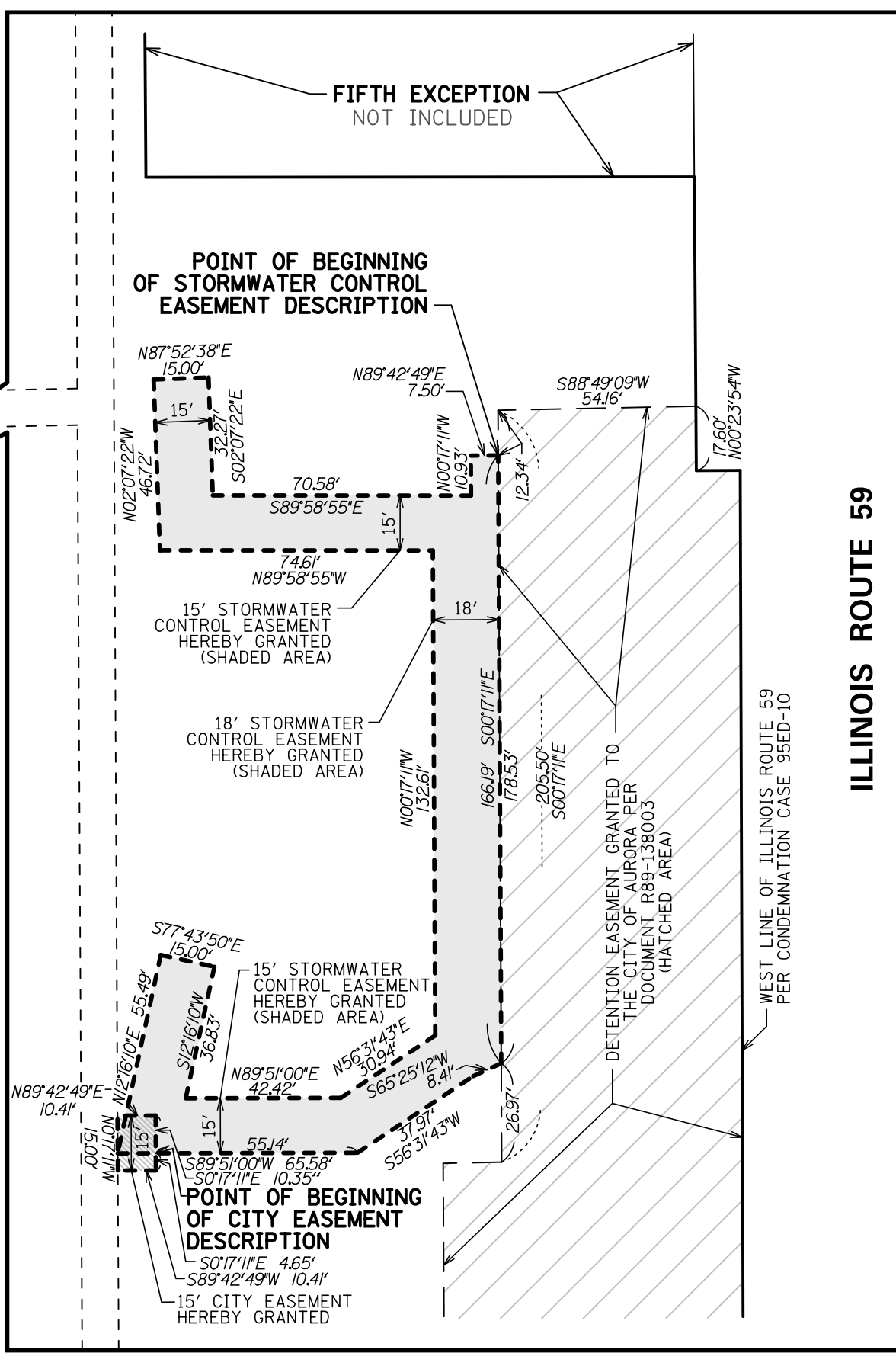
# PLAT OF EASEMENT

THAT PART OF THE NORTHEAST 1/4 OF SECTION 28, TOWNSHIP 38 NORTH, RANGE 9, EAST OF THE THIRD PRINCIPAL MERIDIAN, IN THE CITY OF AURORA, DUPAGE COUNTY, ILLINOIS.



LEGEND

—	BOUNDARY LINE
- - -	EXISTING RIGHT OF WAY LINE/LOT LINE
- · - · -	EASEMENT LINE
○	FOUND IRON PIPE (IP)
●	FOUND IRON ROD (IR)
(R)	RECORD
- · - · -	DETENTION EASEMENT HEREBY GRANTED



CITY RESOLUTION: \_\_\_\_\_

PASSED ON: \_\_\_\_\_

<b>OWNER:</b> AURORA MARKETPLACE, L.P. C/O BONNIE MANAGEMENT CORPORATION 8430 W. BRYN MAWR AVE., SUITE 850 CHICAGO, IL 60631 708-851-0808	<b>Development Data Table: Plat of Dedication</b>	
	a) Tax/Parcel Identification Number(s) (PINs): Part of 07-28-201-017	Value
<b>PETITIONER:</b> SPACCO, INC. 9575 W. HIGGINS ROAD SUITE 700 ROSEMONT, IL 60018	b) Right of way being Dedicated	0.00 Acres
	c) Easment being Dedicated	0.15 Acres
		6,490 Square Feet

## PLAT OF EASEMENT

REVISIONS: 10/31/2016		CONSULTING ENGINEERS SITE DEVELOPMENT ENGINEERS LAND SURVEYORS	DATE: 10/10/2016 JOB NO: 9145 FILENAME: 9145EASE-01 SHEET 1 OF 2
		9575 W. Higgins Road, Suite 700, Rosemont, Illinois 60018 Phone: (847) 696-4060 Fax: (847) 696-4065	

