

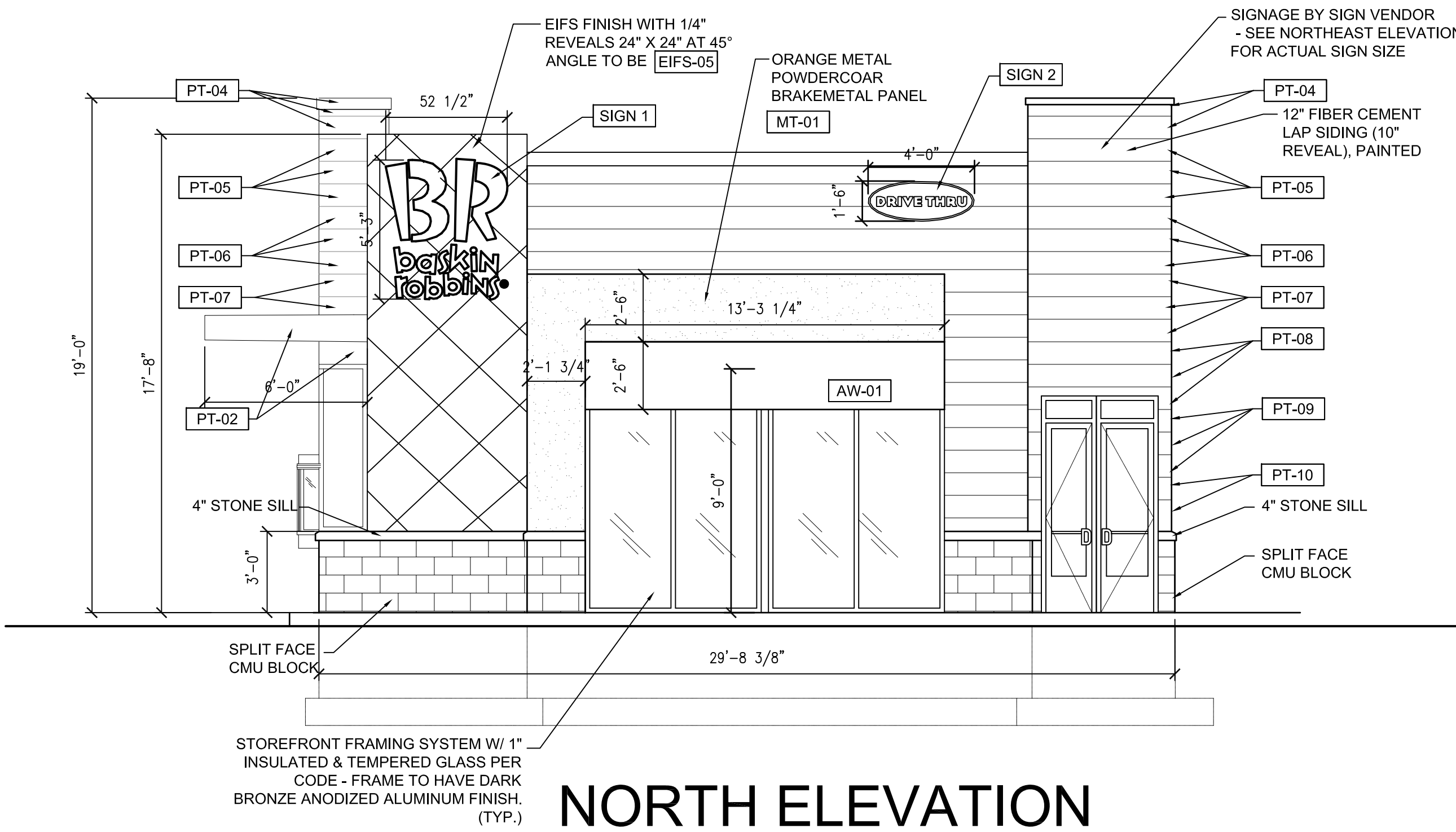
ELEVATIONS

SCALE: 1/4"=1'-0"

Signage Data Table: Ground Signage			
Ground Sign #	Description	Value	Unit
1	i) Length of street frontage - on which Sign is Located	134	Feet
	ii) Width of Sign Face	4.53	Feet
	iii) Height of Sign Face	4.25	Feet
	iv) Square Footage of Sign Face	20	Square Feet
	v) Height of Sign (overall)	6	Feet
	vi) Width of Sign (overall)	5	Feet
	vii) Type of Sign	Monument	
	viii) Type of Sign Base	stone base	
	ix) Is there a Digital Display	no	
	x) If Yes then, Location of Digital Display on the sign		
	Height of Digital Display	Feet	
	Width of Digital Display	Feet	
	Square Footage of Digital Display	Square Feet	
	Percent of Digital Display Sign Coverage	Percent	
2	i) Length of street frontage - on which Sign is Located	120	Feet
	ii) Width of Sign Face	4.50	Feet
	iii) Height of Sign Face	4.25	Feet
	iv) Square Footage of Sign Face	20	Square Feet
	v) Height of Sign (overall)	6	Feet
	vi) Width of Sign (overall)	5	Feet
	vii) Type of Sign	Monument	
	viii) Type of Sign Base	stone base	
	ix) Is there a Digital Display	no	
	x) If Yes then, Location of Digital Display on the sign		
	Height of Digital Display	Feet	
	Width of Digital Display	Feet	
	Square Footage of Digital Display	Square Feet	
	Percent of Digital Display Sign Coverage	Percent	

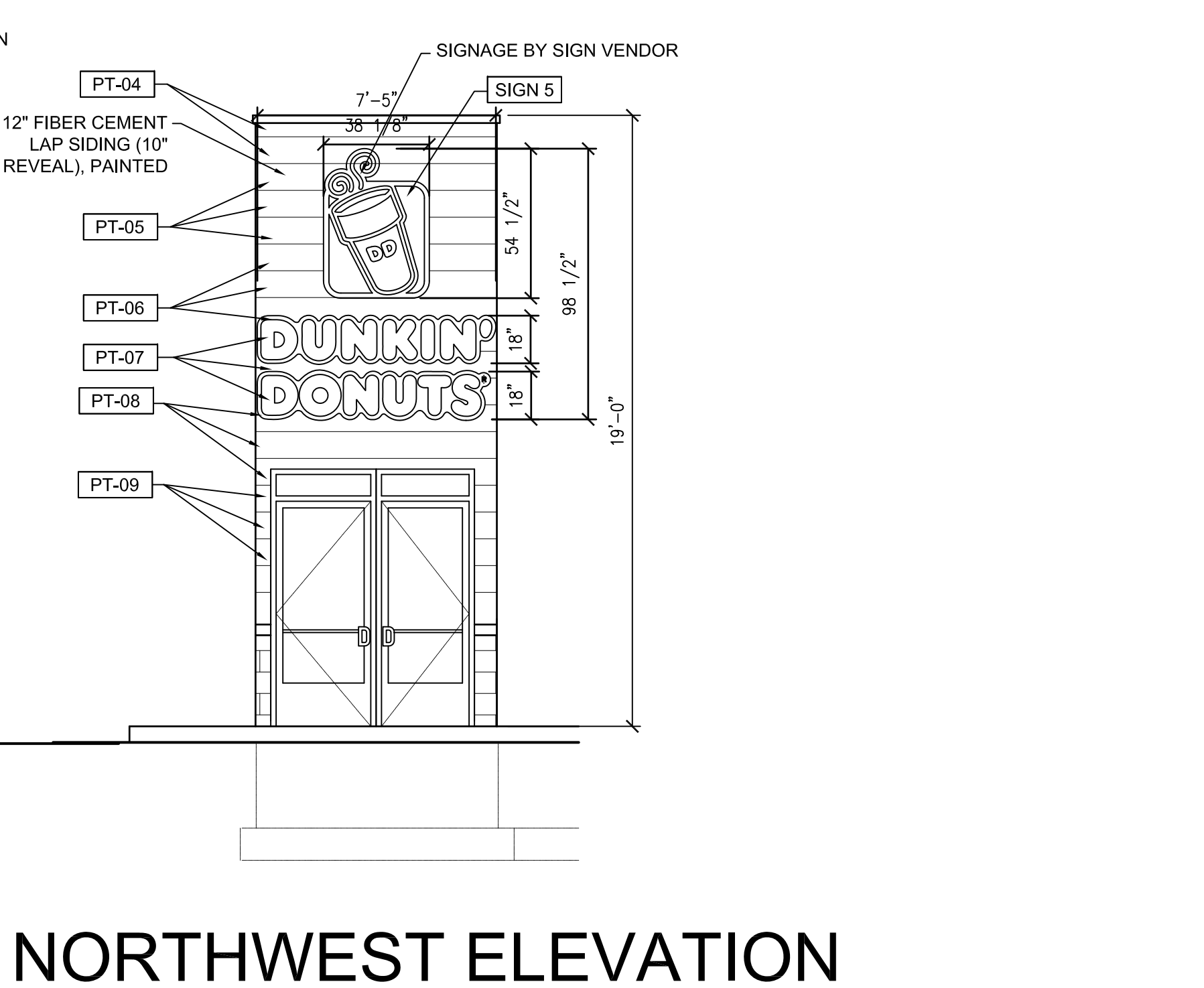
Signage Data Table: Wall Signage			
Wall Sign #	Description	Value	Unit
1	i) Width of Façade - on which Sign is Located	30	Feet
	ii) Height of Façade - on which Sign is Located	17	Feet
	iii) Square Footage of Façade - on which Sign is Located	510	Square Feet
	iv) Width of Sign Face	4.38	Feet
	v) Height of Sign Face	5.25	Feet
	vi) Square Footage of Sign Face	23	Square Feet
	vii) Percent of Sign Coverage - Façade on which Sign is Located	5%	Percent
2	i) Width of Façade - on which Sign is Located	30	Feet
	ii) Height of Façade - on which Sign is Located	17	Feet
	iii) Square Footage of Façade - on which Sign is Located	510	Square Feet
	iv) Width of Sign Face	4.00	Feet
	v) Height of Sign Face	1.50	Feet
	vi) Square Footage of Sign Face	6	Square Feet
	vii) Percent of Sign Coverage - Façade on which Sign is Located	1%	Percent
3	i) Width of Façade - on which Sign is Located	70	Feet
	ii) Height of Façade - on which Sign is Located	17	Feet
	iii) Square Footage of Façade - on which Sign is Located	1,190	Square Feet
	iv) Width of Sign Face	4.38	Feet
	v) Height of Sign Face	5.25	Feet
	vi) Square Footage of Sign Face	23	Square Feet
	vii) Percent of Sign Coverage - Façade on which Sign is Located	1%	Percent
4	i) Width of Façade - on which Sign is Located	70	Feet
	ii) Height of Façade - on which Sign is Located	17	Feet
	iii) Square Footage of Façade - on which Sign is Located	1,190	Square Feet
	iv) Width of Sign Face	4.00	Feet
	v) Height of Sign Face	1.50	Feet
	vi) Square Footage of Sign Face	6	Square Feet
	vii) Percent of Sign Coverage - Façade on which Sign is Located	1%	Percent
5	i) Width of Façade - on which Sign is Located	70	Feet
	ii) Height of Façade - on which Sign is Located	17	Feet
	iii) Square Footage of Façade - on which Sign is Located	1,190	Square Feet
	iv) Width of Sign Face	7.41	Feet
	v) Height of Sign Face	8.20	Feet
	vi) Square Footage of Sign Face	61	Square Feet
	vii) Percent of Sign Coverage - Façade on which Sign is Located	5%	Percent

Elevation Data Table: Elevations			
Description	Value	Unit	
a) Building Height	17.00	feet	
b) Grade Elevation	676	feet	
c) Building Square Footage by Floor	8,290	Square Feet	
d) Building Square Footage Dunkin Donuts	2,000	Square Feet	
e) Building Square Footage Dee's Place	6,290	Square Feet	



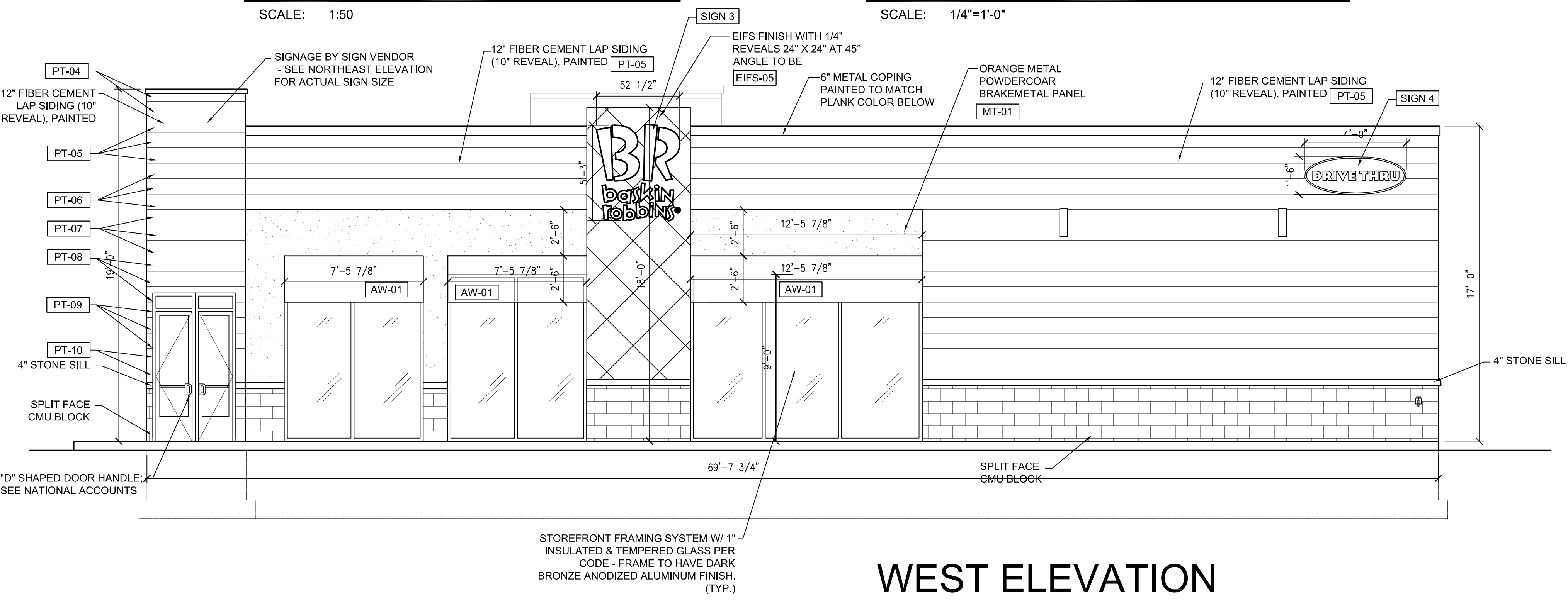
NORTH ELEVATION

SCALE: 1:50



NORTHWEST ELEVATION

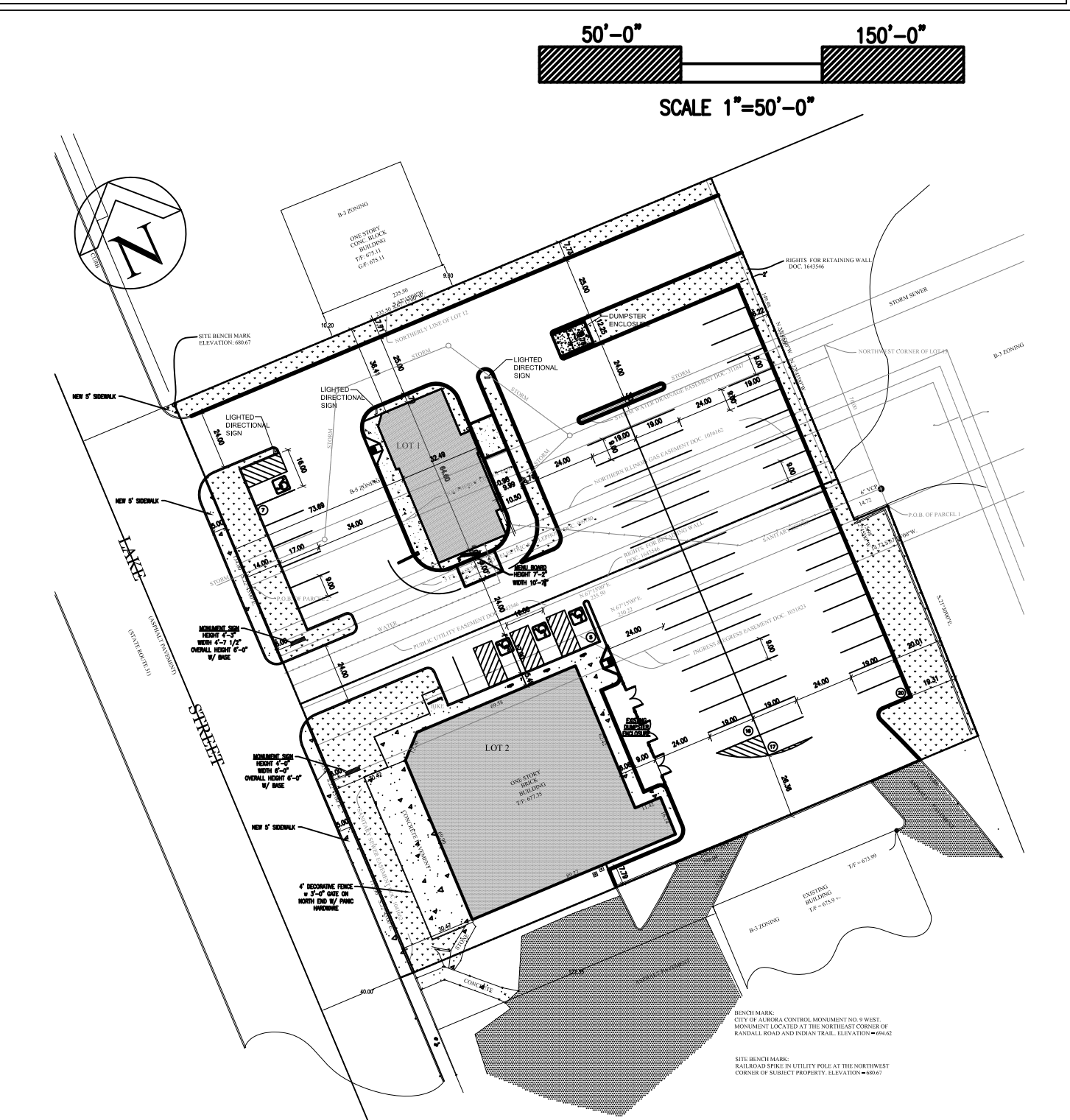
SCALE: 1/4"=1'-0"



WEST ELEVATION

SCALE: 1/4"=1'-0"

EXTERIOR FINISH MATERIAL SCHEDULE:					
CODE	MATERIAL	MANUFACTURER	PRODUCT #	DESCRIPTION	REMARKS
AW-01	AWNING	ARLON	DD FRESH BREW AWNING	BROWN AWNING WITH FRESH BREW MESSAGING	STANDARD AWNING FOR FRESH BREW DESIGNS W/ ORANGE BAND
AW-02	AWNING	ARLON	DD FRESH BREW AWNING	ORANGE AWNING WITH FRESH BREW MESSAGING	ALTERNATE AWNING FOR F8 DESIGNS WHERE ORANGE BAND IS NOT ALLOWED OR PRACTICAL TO OVERALL DESIGN
AW-03	AWNING	ARLON	BR FLAVORS AWNING	PINK AWNING	STANDARD AWNING FOR BR FLAVOR DESIGNS W/BLUE BAND
BC-1	BOLLARD COVERS	IDEAL SHIELD	BC1-CC-4-52-5	4"W X 52"H ORANGE BOLLARD SLEEVE	
EIFS-01	EIFS	DRYVIT SYSTEMS, INC	DUDD-1C-1020	MATCH DD ORANGE PMS 165C	ORANGE BAND MATERIAL
EIFS-02	EIFS	DRYVIT SYSTEMS, INC	DUDD-1C-1020	PAINT COLORS TO MATCH MONOLITH SCHEME	*ALTERNATE MATERIAL TO HARDPLANK BOARDS ON MONOLITH
EIFS-03	EIFS	DRYVIT SYSTEMS, INC	DUDD-1C-1020	MATCH SHERWIN WILLIAMS 7536 "BITTERSWEET STEM"	*ALTERNATE BUILDING MATERIAL TO HARDPLANK FIELD SIDING (NON-MONOLITH)
EIFS-04	EIFS	DRYVIT SYSTEMS, INC	DUDD-1C-1020	MATCH PMS #286 (BR BLUE)	BLUE BAND MATERIAL
EIFS-05	EIFS	DRYVIT SYSTEMS, INC	DUDD-1C-1020	MATCH SHERWIN WILLIAMS 7006 "EXTRA WHITE"	*ALTERNATE BUILDING MATERIAL TO HARDPLANK SIDING (BR SEGMENT OF COMBO ONLY)
PT-01	PAINT	SHERWIN WILLIAMS	6372	"INVITING IVORY"	SATIN
PT-02	PAINT	SHERWIN WILLIAMS	6884	"OBSTINATE ORANGE"	SATIN
PT-03	PAINT	SHERWIN WILLIAMS	6140	"MODERATE WHITE"	SATIN
PT-04	PAINT	SHERWIN WILLIAMS	7517	"CHINA DOLL"	SATIN
PT-05	PAINT	SHERWIN WILLIAMS	7536	"BITTERSWEET STEM"	SATIN
PT-06	PAINT	SHERWIN WILLIAMS	6100	"PRACTICAL BEIGE"	SATIN
PT-07	PAINT	SHERWIN WILLIAMS	7114	"OAK BARREL"	SATIN
PT-08	PAINT	SHERWIN WILLIAMS	6096	"LUTE BROWN"	SATIN
PT-09	PAINT	SHERWIN WILLIAMS	6097	"STURDY BROWN"	SATIN
PT-10	PAINT	SHERWIN WILLIAMS	6090	"JAWA"	SATIN
PT-11	PAINT	SHERWIN WILLIAMS	6069	"FRENCH ROAST"	SATIN
PT-12	PAINT	SHERWIN WILLIAMS	6099	"BLACK BEAN"	SATIN
PT-13	PAINT	SHERWIN WILLIAMS	7006	"EXTRA WHITE"	SATIN (COMBO - BR FIELD)



GLEASON ARCHITECTS, P.C.
 769 Heartland Drive, Unit A
 Sugar Grove, Illinois 60554
 Phone: 630-466-8740
 Fax: 630-466-8760
 E-mail: thadgleason@gleasonarchitects.com

THESE DRAWINGS, INCLUDING ALL DESIGNS, DETAILS, SPECIFICATIONS AND INFORMATION, ARE THE SOLE PROPERTY AND COPYRIGHT OF GLEASON ARCHITECTS, P.C. AND ARE FOR USE ON THIS SPECIFIC PROJECT AND SHALL NOT BE USED ON ANY OTHER WORK WITHOUT THE AGREEMENT AND WRITTEN PERMISSION OF GLEASON ARCHITECTS, P.C.

ISSUED	DATE
FOR APPROVAL	
FOR PERMIT	
FOR BID	
FOR CONST.	

REVISIONS	DATE
1	PLANNING COMMENTS/06/15
2	PLANNING COMMENTS/09/10/15
3	

PROJECT: **Dunkin' Donuts / Baskin Robbins**
 1271 North Lake Street
 Aurora, IL

OWNER: KAMELISH DESAI 2112 W. GALENA BLVD. AURORA, IL 60502
 DHARSHINI PATEL 2112 W. GALENA BLVD. AURORA, IL 60502
 SANDIP PATEL 2112 W. GALENA BLVD. AURORA, IL 60502

PETITIONER: JAY MAURITI #3 CORPORATION
 2112 W. Galeana Blvd
 Aurora, IL 60502

JOB NO. 13-044
 DATE 05/19/15
 FILE 01-42
 PLOT SCALE: 1

OWNER APPROVAL

Signature _____
 Date _____

SHEET TITLE
EXTERIOR ELEVATIONS

SHEET NUMBER
A5

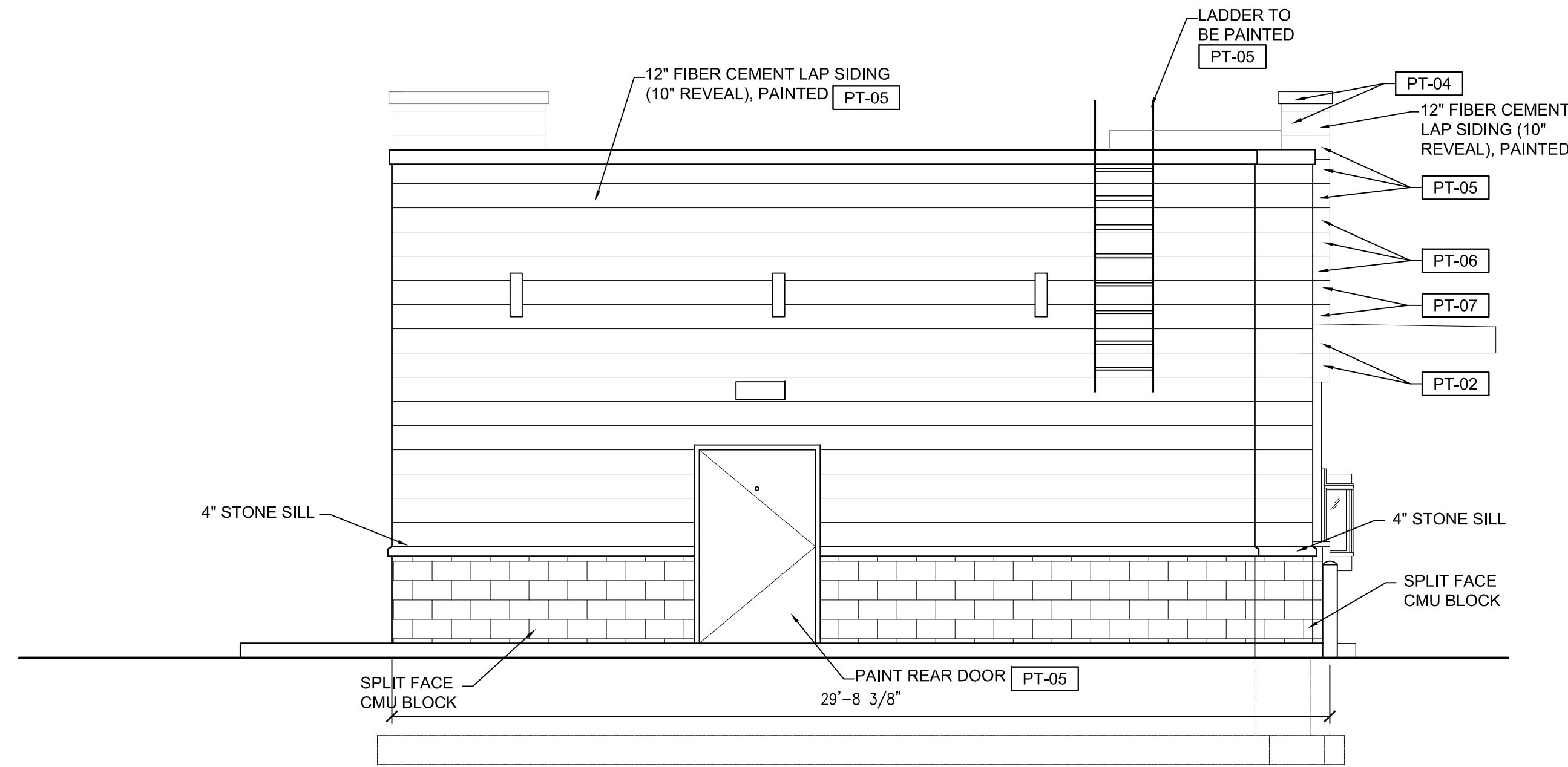
ELEVATIONS

SCALE: 1/4"=1'-0"

Elevation Data Table: Elevations		
Description	Value	Unit
a) Building Height	17.00	feet
b) Grade Elevation	676	feet
c) Building Square Footage by Floor	8,290	Square Feet
d) Building Square Footage Dunkin Donuts	2,000	Square Feet
e) Building Square Footage Dew's Place	6,290	Square Feet

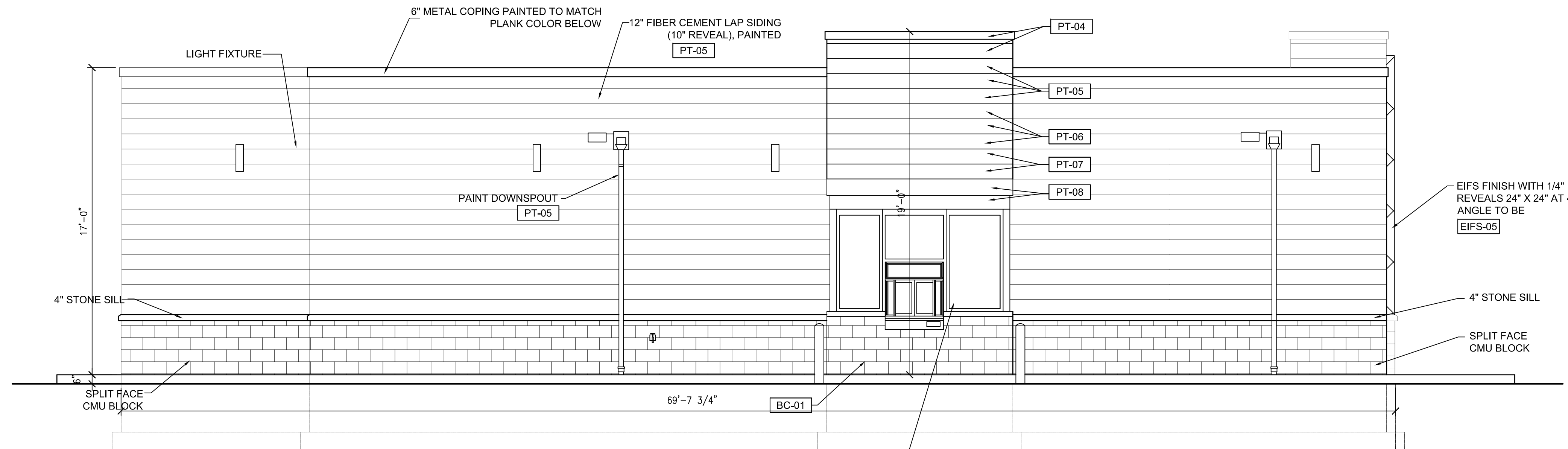
Signage Data Table: Ground Signage			
Ground Sign #	Description	Value	Unit
1	i) Length of Street Frontage - on which Sign is Located	134	Feet
	ii) Width of Sign Face	4.63	Feet
	iii) Height of Sign Face	4.25	Feet
	iv) Square Footage of Sign Face	20	Square Feet
	v) Height of Sign (overall)	6	Feet
	vi) Width of Sign (overall)	5	Feet
	vii) Type of Sign	Monument	
	viii) Type of Sign Base	Stone Base	
	ix) Is there a Digital Display	no	
	x) If Yes then, Location of Digital Display on the sign	Height of Digital Display	Feet
	Width of Digital Display	Feet	
	Square Footage of Digital Display	Square Feet	
	Percent of Digital Display Sign Coverage	Percent	
2	i) Length of Street Frontage - on which Sign is Located	120	Feet
	ii) Width of Sign Face	4.60	Feet
	iii) Height of Sign Face	4.25	Feet
	iv) Square Footage of Sign Face	20	Square Feet
	v) Height of Sign (overall)	6	Feet
	vi) Width of Sign (overall)	5	Feet
	vii) Type of Sign	Monument	
	viii) Type of Sign Base	Stone Base	
	ix) Is there a Digital Display	no	
	x) If Yes then, Location of Digital Display on the sign	Height of Digital Display	Feet
	Width of Digital Display	Feet	
	Square Footage of Digital Display	Square Feet	
	Percent of Digital Display Sign Coverage	Percent	

Signage Data Table: Wall Signage			
Wall Sign #	Description	Value	Unit
1	i) Width of Façade - on which Sign is Located	30	Feet
	ii) Height of Façade - on which Sign is Located	17	Feet
	iii) Square Footage of Façade - on which Sign is Located	510	Square Feet
	iv) Width of Sign Face	4.38	Feet
	v) Height of Sign Face	5.25	Feet
	vi) Square Footage of Sign Face	23	Square Feet
	vii) Percent of Sign Coverage - Façade on which Sign is Located	5%	Percent
2	i) Width of Façade - on which Sign is Located	30	Feet
	ii) Height of Façade - on which Sign is Located	17	Feet
	iii) Square Footage of Façade - on which Sign is Located	510	Square Feet
	iv) Width of Sign Face	4.00	Feet
	v) Height of Sign Face	1.50	Feet
	vi) Square Footage of Sign Face	6	Square Feet
	vii) Percent of Sign Coverage - Façade on which Sign is Located	1%	Percent
3	i) Width of Façade - on which Sign is Located	70	Feet
	ii) Height of Façade - on which Sign is Located	17	Feet
	iii) Square Footage of Façade - on which Sign is Located	1,190	Square Feet
	iv) Width of Sign Face	4.38	Feet
	v) Height of Sign Face	5.25	Feet
	vi) Square Footage of Sign Face	23	Square Feet
	vii) Percent of Sign Coverage - Façade on which Sign is Located	1%	Percent
4	i) Width of Façade - on which Sign is Located	70	Feet
	ii) Height of Façade - on which Sign is Located	17	Feet
	iii) Square Footage of Façade - on which Sign is Located	1,190	Square Feet
	iv) Width of Sign Face	4.00	Feet
	v) Height of Sign Face	1.50	Feet
	vi) Square Footage of Sign Face	6	Square Feet
	vii) Percent of Sign Coverage - Façade on which Sign is Located	1%	Percent
5	i) Width of Façade - on which Sign is Located	70	Feet
	ii) Height of Façade - on which Sign is Located	17	Feet
	iii) Square Footage of Façade - on which Sign is Located	1,190	Square Feet
	iv) Width of Sign Face	7.41	Feet
	v) Height of Sign Face	8.20	Feet
	vi) Square Footage of Sign Face	61	Square Feet
	vii) Percent of Sign Coverage - Façade on which Sign is Located	5%	Percent



SOUTH ELEVATION

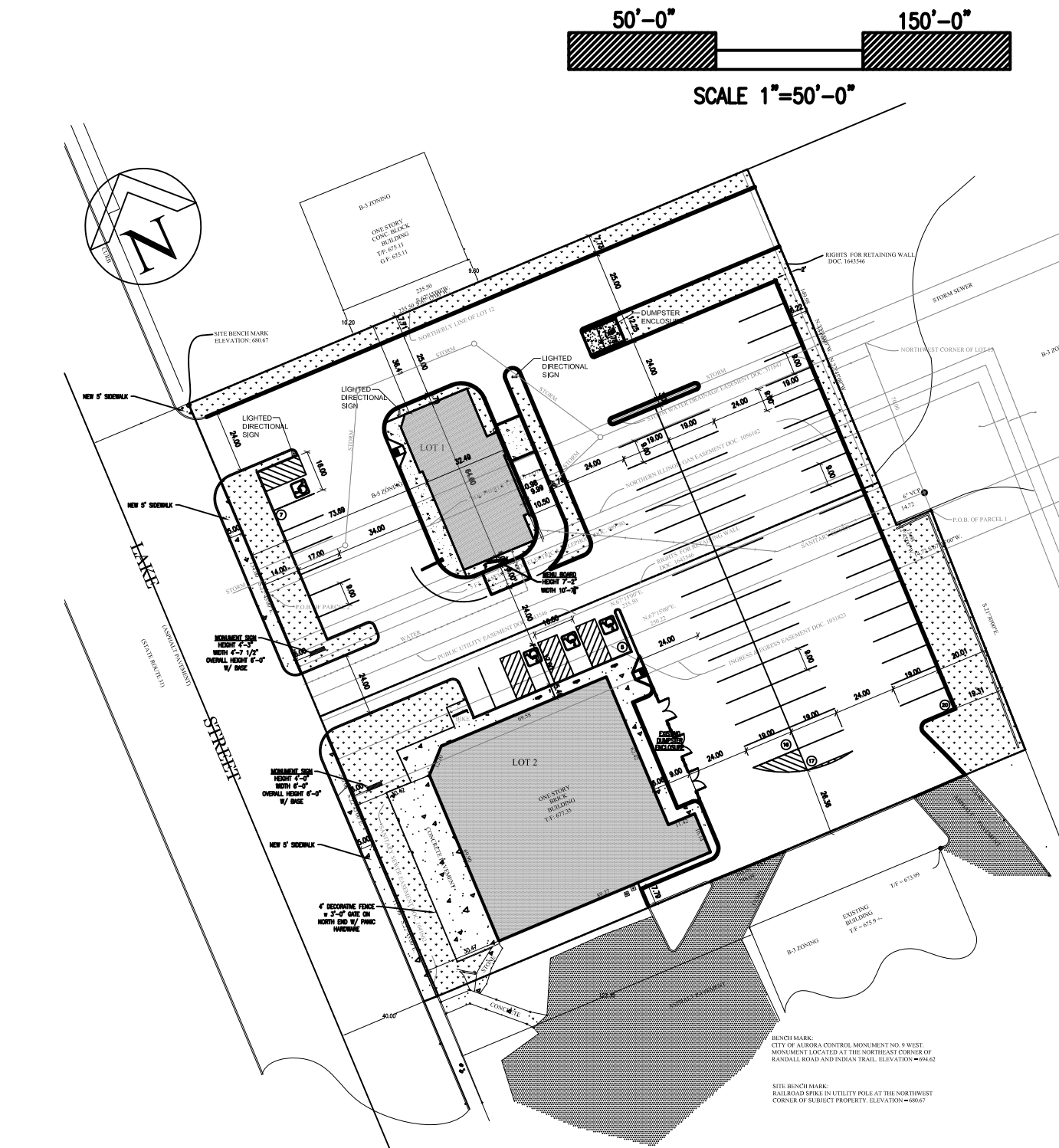
SCALE: 1/4"=1'-0"



EAST ELEVATION

SCALE: 1/4"=1'-0"

EXTERIOR FINISH MATERIAL SCHEDULE:					
CODE	MATERIAL	MANUFACTURER	PRODUCT #	DESCRIPTION	REMARKS
AW-01	AWNING	ARLON	DD FRESH BREW AWNING	BROWN AWNING WITH FRESH BREW MESSAGING	STANDARD AWNING FOR FRESH BREW DESIGNS W/ ORANGE BAND
AW-02	AWNING	ARLON	DD FRESH BREW AWNING	ORANGE AWNING WITH FRESH BREW MESSAGING	ALTERNATE AWNING FOR FB DESIGNS WHERE ORANGE BAND IS NOT ALLOWED OR PRACTICAL TO OVERALL DESIGN
AW-03	AWNING	ARLON	BR FLAVORS AWNING	PINK AWNING	STANDARD AWNING FOR BR FLAVOR DESIGNS W/BLUE BAND
BC-1	BOLLARD COVERS	IDEAL SHIELD	BC-CC-4-S2-S	4\"/>	



769 Heartland Drive, Unit A
Sugar Grove, Illinois 60554
Phone: 630-466-8740
Fax: 630-466-8760
E-mail: thadgleason@gleasonarchitectspc.com

THESE DRAWINGS, INCLUDING ALL DESIGNS, DETAILS, SPECIFICATIONS AND INFORMATION, ARE THE SOLE PROPERTY AND COPYRIGHT OF GLEASON ARCHITECTS, P.C. AND ARE FOR USE ON THE SPECIFIC PROJECT AND SHALL NOT BE USED ON ANY OTHER WORK WITHOUT THE AGREEMENT AND WRITTEN PERMISSION OF GLEASON ARCHITECTS, P.C.

ISSUED	DATE
FOR APPROVAL	
FOR PERMIT	
FOR BID	
FOR CONST.	

REVISIONS	DATE
1 PLANNING COMMENTS/06/15	
2 PLANNING COMMENTS/09/10/15	

PROJECT: Dunkin Donuts / Baskin Robbins
1271 North Lake Street
Aurora, IL

OWNER: KAMELISH DESAI 2112 W. GALENA BLVD., AURORA, IL 60502
NICK DESAI 2112 W. GALENA BLVD., AURORA, IL 60502
DHARTMISH PATEL 2112 W. GALENA BLVD., AURORA, IL 60502
SANDIP PATEL 2112 W. GALENA BLVD., AURORA, IL 60502

CLIENT: Jay Mauriti #3 Corporation
2112 W. Galena Blvd
Aurora, IL 60502

ARCHITECT: GLEASON ARCHITECTS, P.C.
2112 W. Galena Blvd
Aurora, IL 60502

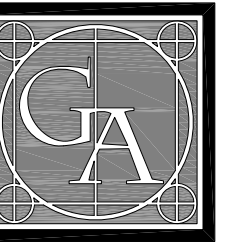
JOB NO. 13-044
DATE 05/19/15
FILE 01-A2
PLOT SCALE: 1/4"=1'-0"

OWNER APPROVAL

Signature _____
Date _____

SHEET TITLE
EXTERIOR
ELEVATIONS

SHEET NUMBER
A5.1



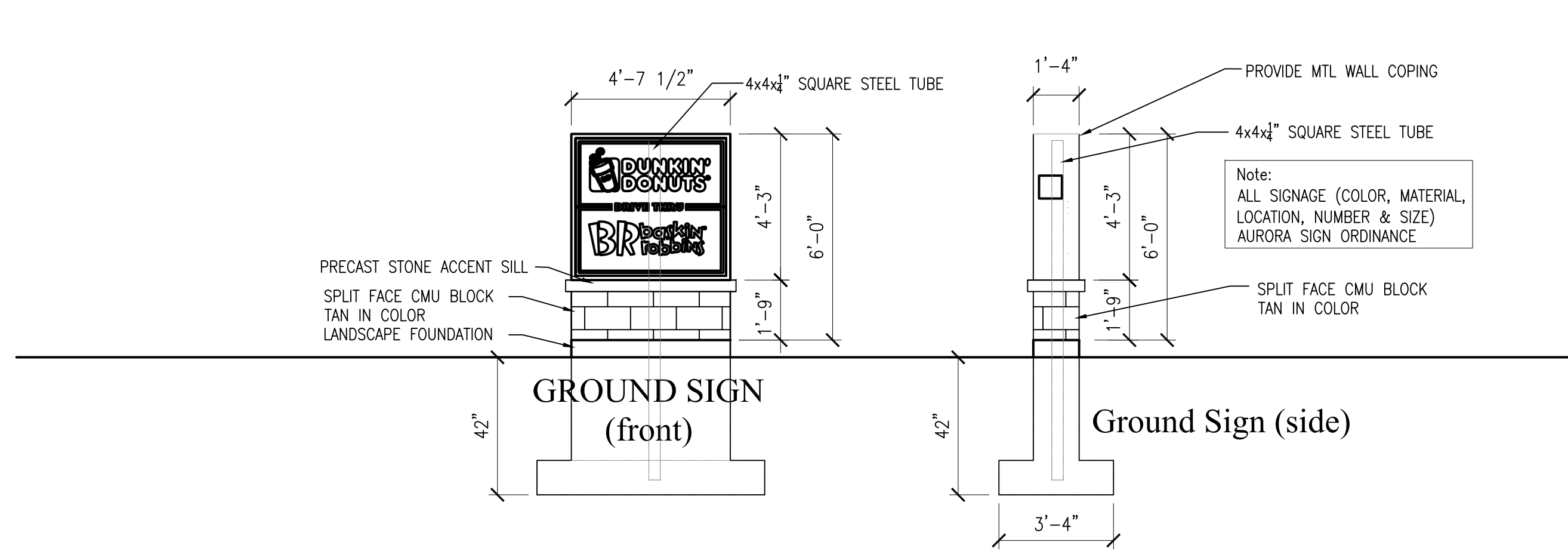
GLEASON ARCHITECTS, P.C.

769 Heartland Drive, Unit A
Sugar Grove, Illinois 60554
Phone: 630-466-8740
Fax: 630-466-8760
E-mail: thadgleason@gleasonarchitectspc.co

THESE DRAWINGS, INCLUDING ALL DESIGNS, DETAILS, SPECIFICATIONS AND INFORMATION, ARE THE SOLE PROPERTY AND COPYRIGHT OF GLEASON ARCHITECTS, P.C. AND ARE FOR USE ON THIS SPECIFIC PROJECT AND SHALL NOT BE USED FOR ANY OTHER WORK WITHOUT THE AGREEMENT AND WRITTEN PERMISSION OF GLEASON ARCHITECTS, P.C.

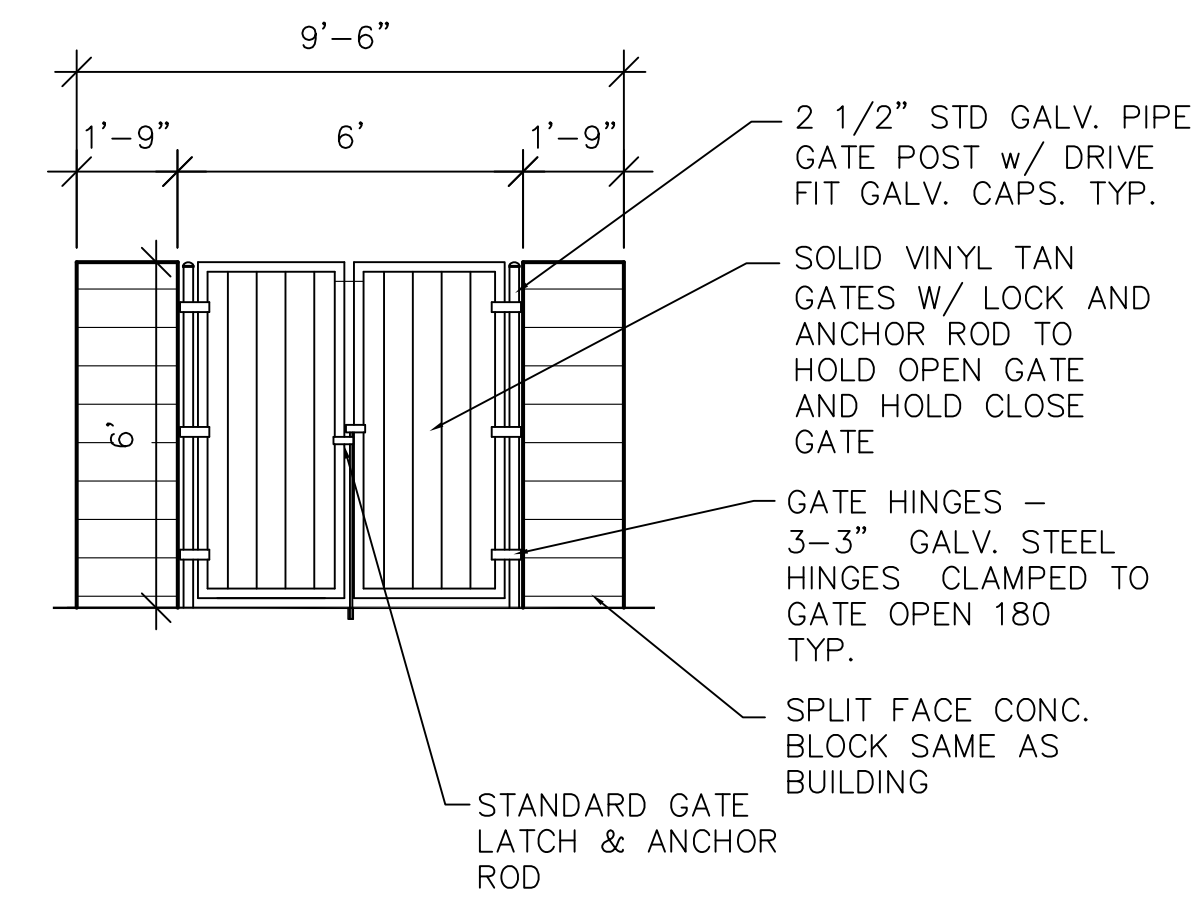
ISSUED	DATE
FOR APPROVAL	
FOR PERMIT	
FOR BID	
FOR CONST.	

REVISIONS	DATE
1 PLANNING COMMENTS/06/15	
2 PLANNING COMMENTS/09/10/15	



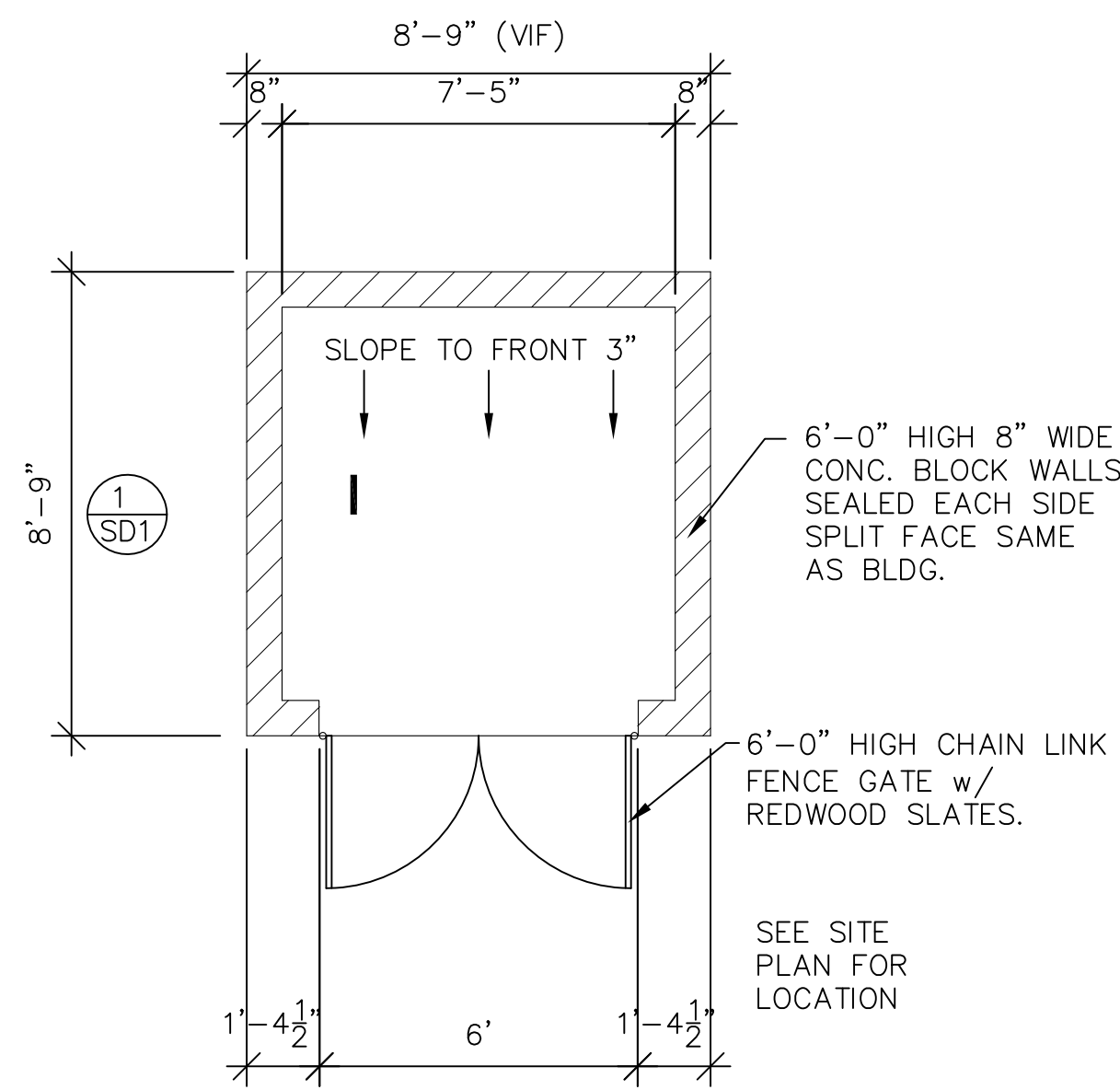
SIGN ELEVATION

SCALE: 1:40



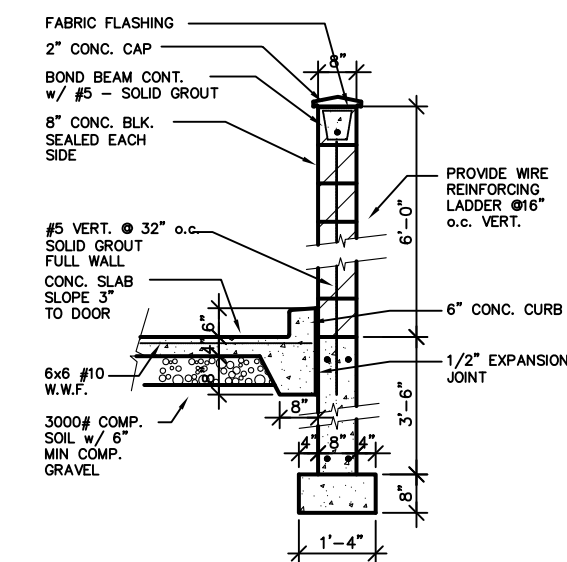
TRASH ENC ELEVATION

SCALE: 1:40



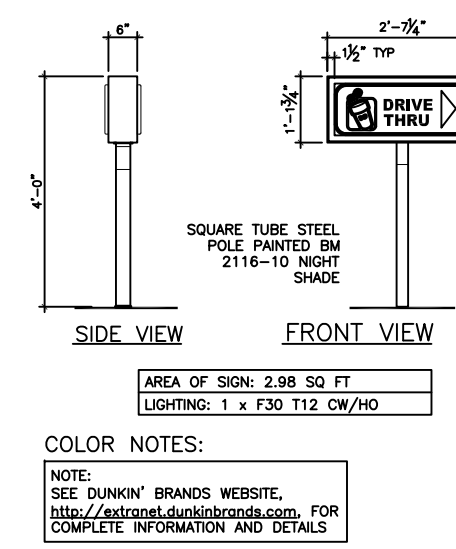
TRASH ENC PLAN

SCALE: 1:40



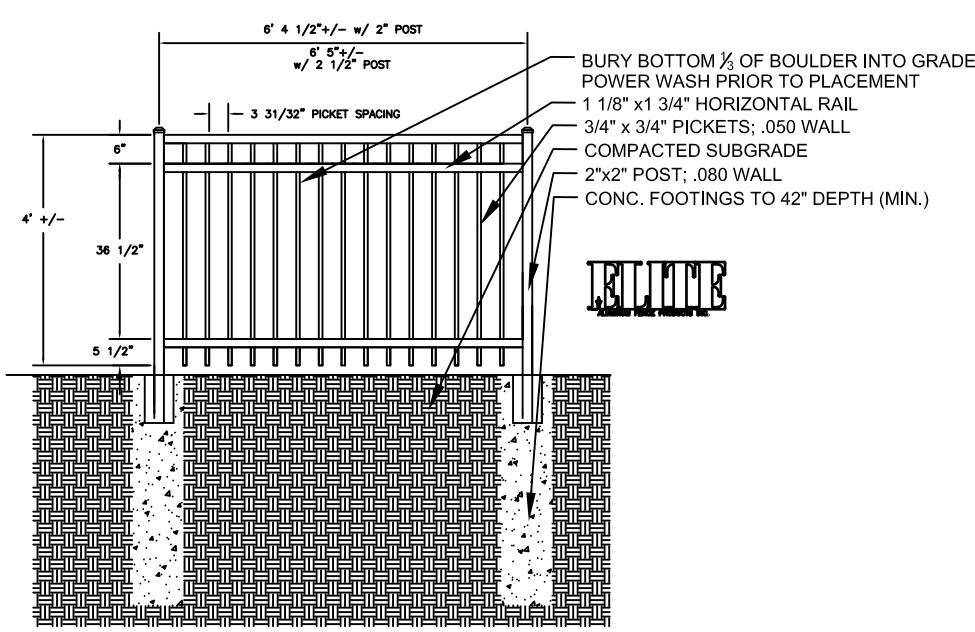
TRASH ENC SECTION

SCALE: 1:40



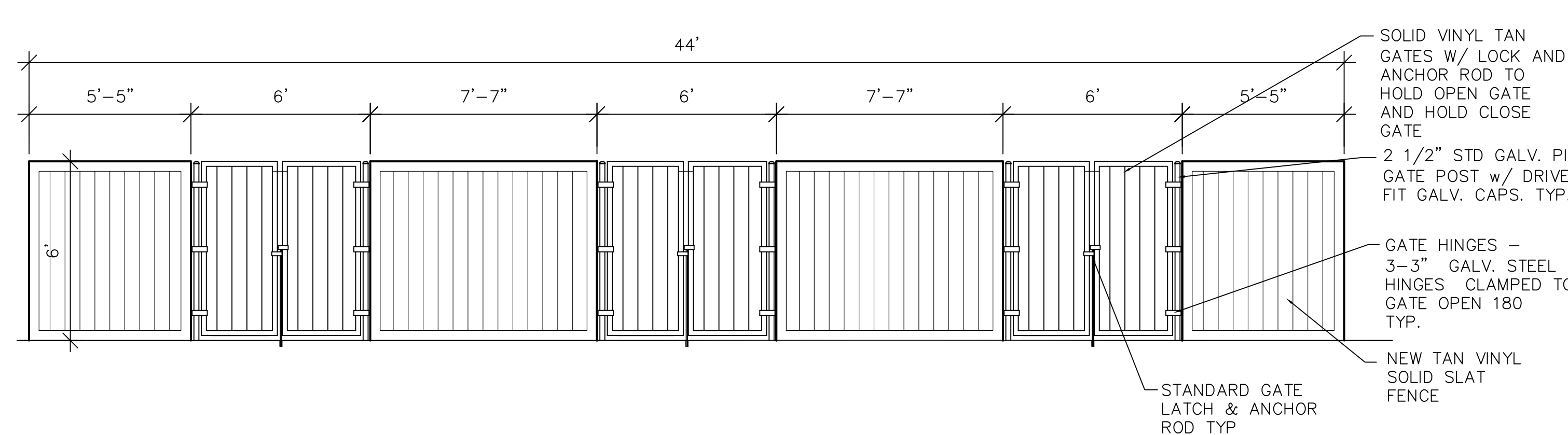
DIRECTIONAL SIGN

SCALE: 1:40



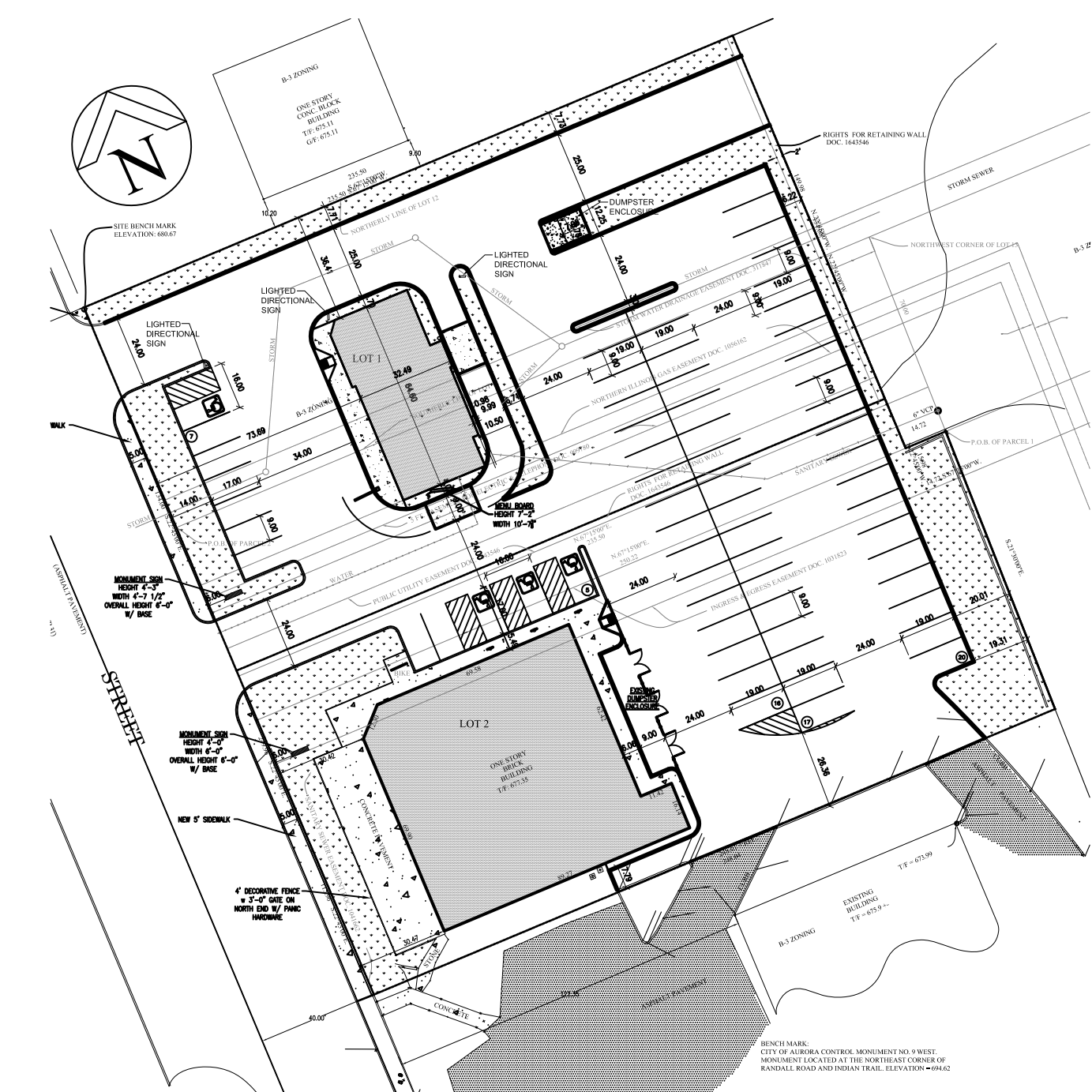
FENCE DETAIL @ DEE'S

SCALE: 1:40



FENCE DETAIL AT EXISTING RESTAURANT

SCALE: 1:40



PROJECT: Dunkin' Donuts / Baskin Robbins
1271 North Lake Street
Aurora, IL

OWNER: KAMELISH DESAI 2112 W. GALENA BLVD. AURORA, IL 60502
NICK DESAI 2112 W. GALENA BLVD. AURORA, IL 60502
DHARTMISH PATEL 2112 W. GALENA BLVD. AURORA, IL 60502
SANDIP PATEL 2112 W. GALENA BLVD. AURORA, IL 60502

CLIENT: Jay Mauriti #3 Corporation
2112 W. Galena Blvd
Aurora, IL 60502

PETITIONER: JAY MAURITI #3 CORPORATION
2112 W. GALENA BLVD
AURORA, IL 60502

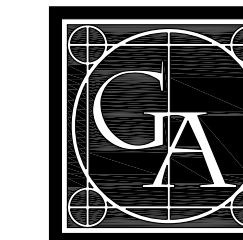
JOB NO. 13-044
DATE 05/19/15
FILE 01-A2
PLOT SCALE: 1:1

OWNER APPROVAL

Signature _____
Date _____

SHEET TITLE
SIGN AND TRASH
ENCLOSURE DETAILS

SHEET NUMBER
A5.2



GLEASON ARCHITECTS, P.C.

769 Heartland Drive, Unit A
Sugar Grove, Illinois 60554
Phone: 630-466-8740
Fax: 630-466-8760

E-mail: thadgleason@gleasonarchitectspc.com

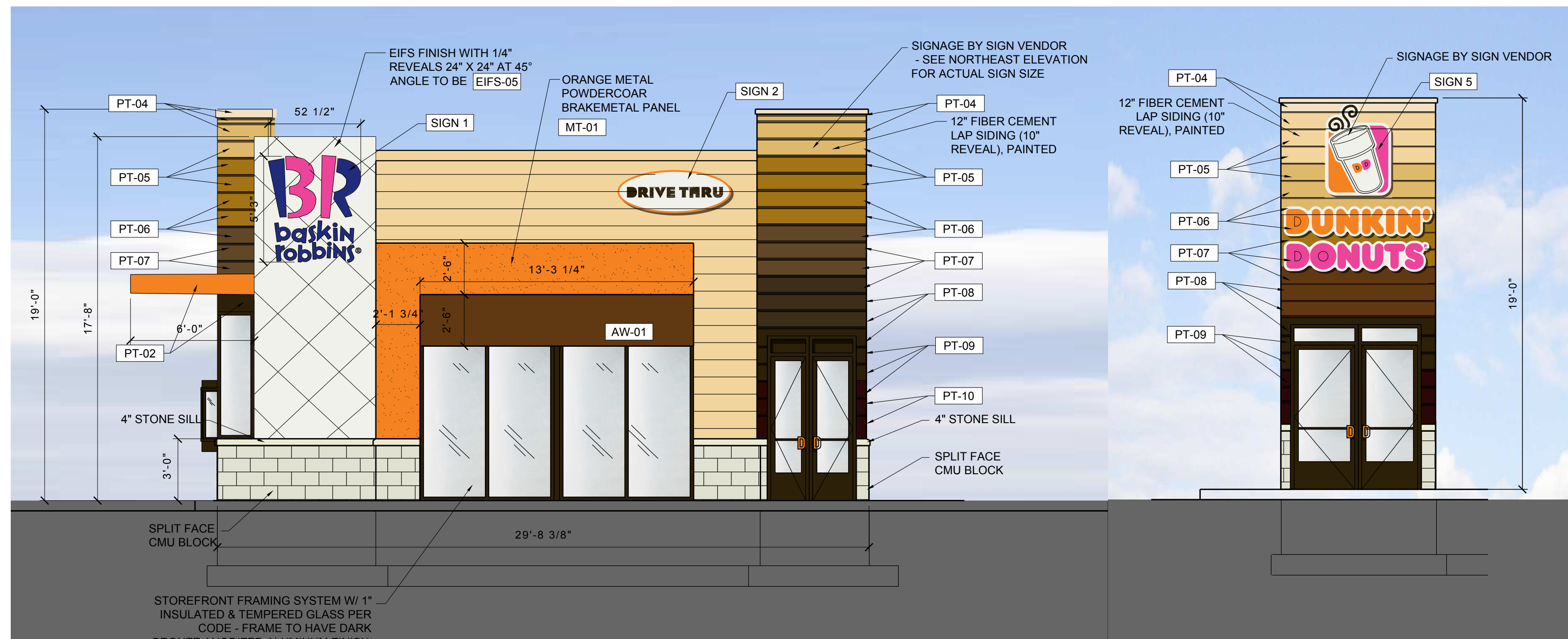
THESE DRAWINGS, INCLUDING ALL DESIGNS, DETAILS, SPECIFICATIONS AND INFORMATION, ARE THE SOLE PROPERTY AND COPYRIGHT OF GLEASON ARCHITECTS, P.C. AND ARE FOR USE ON THIS SPECIFIC PROJECT AND SHALL NOT BE USED ON ANY OTHER WORK WITHOUT THE AGREEMENT AND WRITTEN PERMISSION OF GLEASON ARCHITECTS, P.C.

ISSUED	DATE
FOR APPROVAL	
FOR PERMIT	
FOR BID	
FOR CONST.	

REVISIONS	DATE
1	PLANNING COMMENTS 08/06/15
2	PLANNING COMMENTS 09/10/15
3	

ELEVATIONS

SCALE: 1/4"=1'-0"

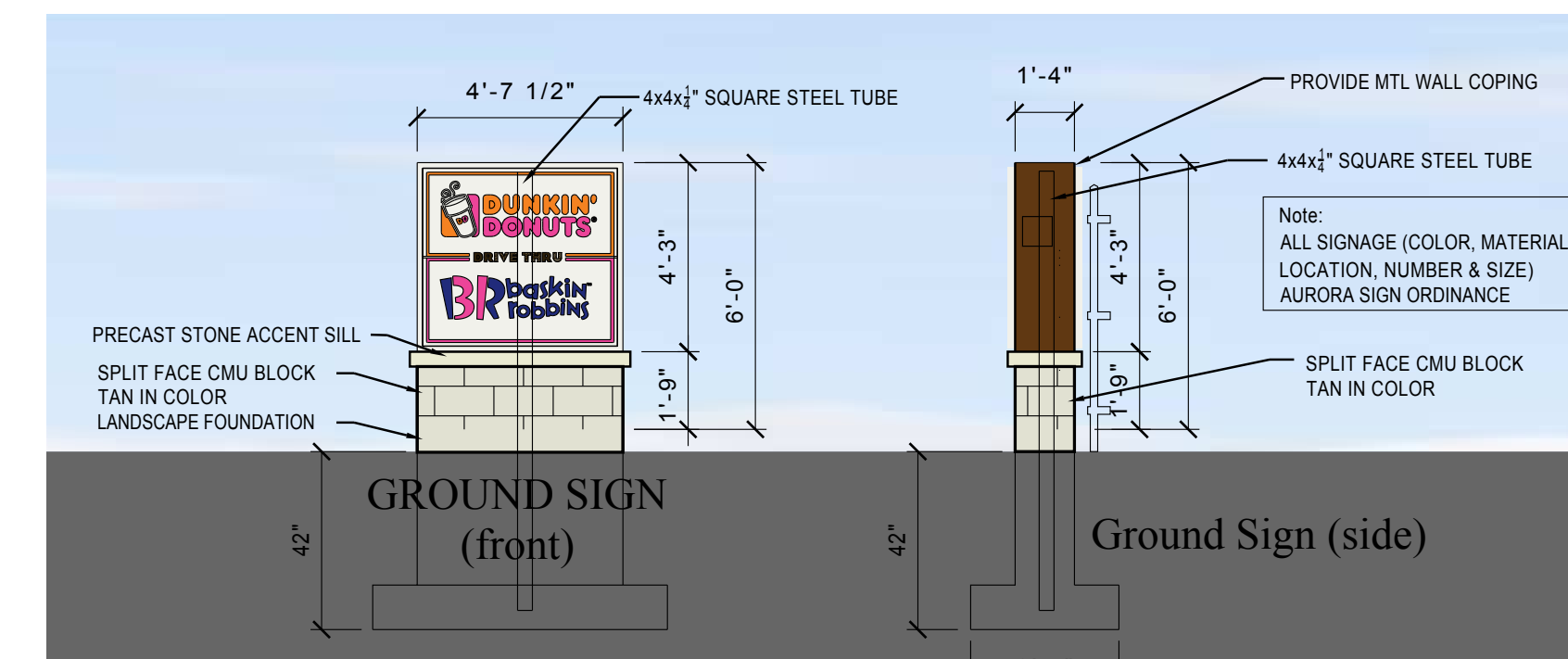


NORTH ELEVATION

SCALE: 1/4"=1'-0"

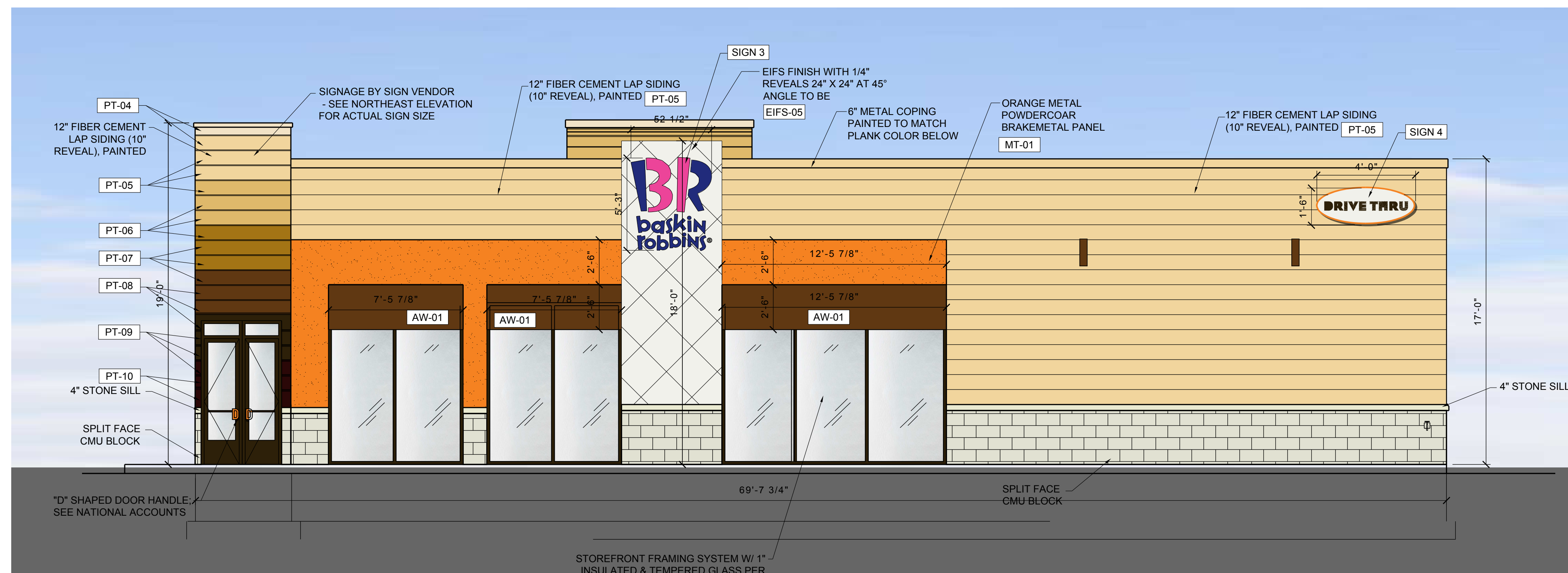
NORTHWEST ELEVATION

SCALE: 1/4"=1'-0"



SIGN

SCALE: 1/4"=1'-0"



WEST ELEVATION

SCALE: 1/4"=1'-0"

PROJECT: Dunkin' Donuts / Baskin Robbins
1271 North Lake Street
Aurora, IL

OWNER: KAMELISH DESAI 2112 W. GALENA BLVD, AURORA, IL 60502
NICK DESAI 2112 W. GALENA BLVD, AURORA, IL 60502
DHARTMISH PATEL 2112 W. GALENA BLVD, AURORA, IL 60502
SANDIP PATEL 2112 W. GALENA BLVD, AURORA, IL 60502

PETITIONER: JAY MAURITI #3 CORPORATION
2112 W. GALENA BLVD
AURORA, IL 60502

JOB NO. 13-044
DATE 05/19/15
FILE 01-E
PLOT SCALE 1:1

OWNER APPROVAL

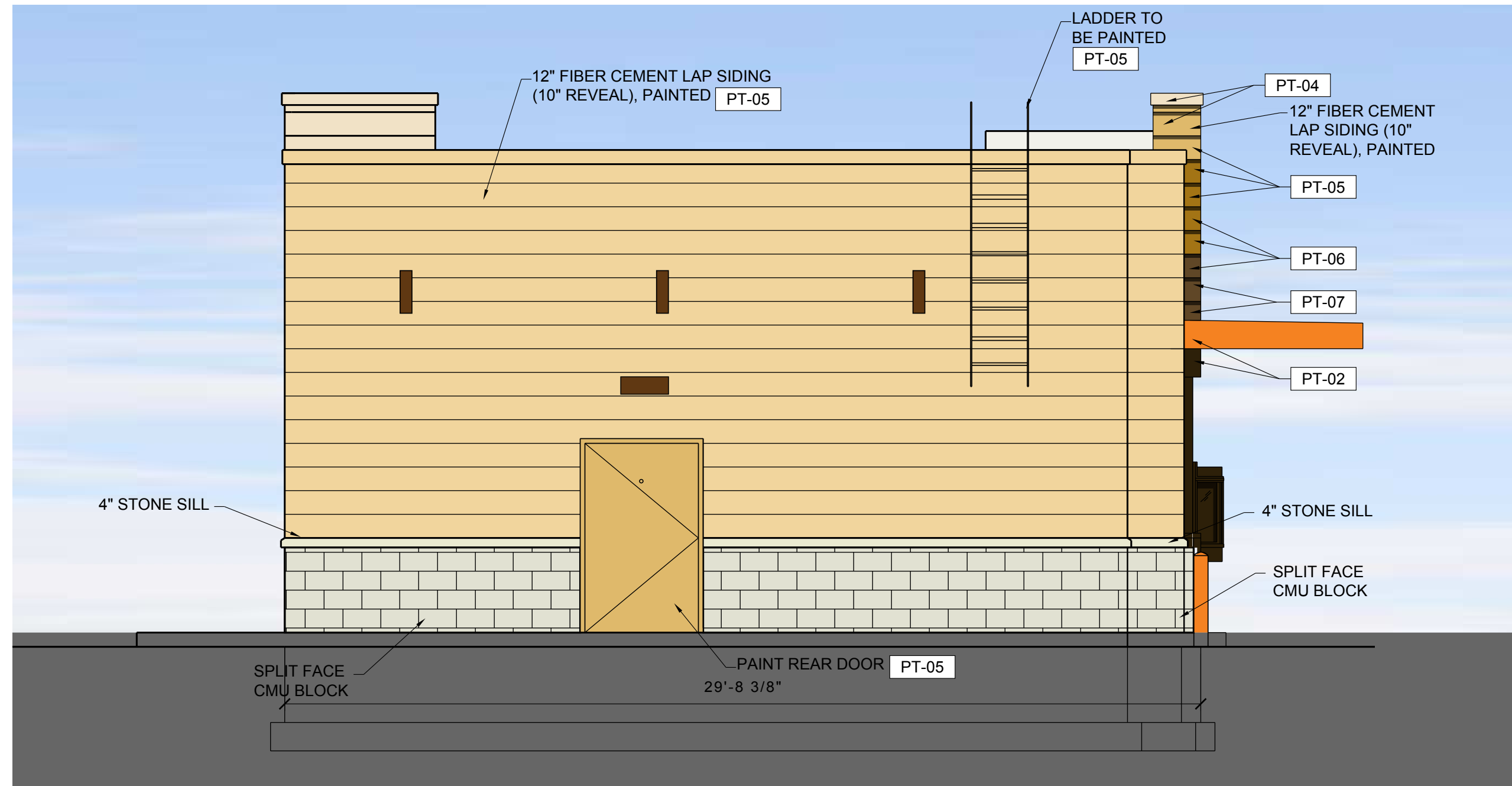
Signature _____
Date _____

SHEET TITLE
EXTERIOR ELEVATIONS

SHEET NUMBER
E-1

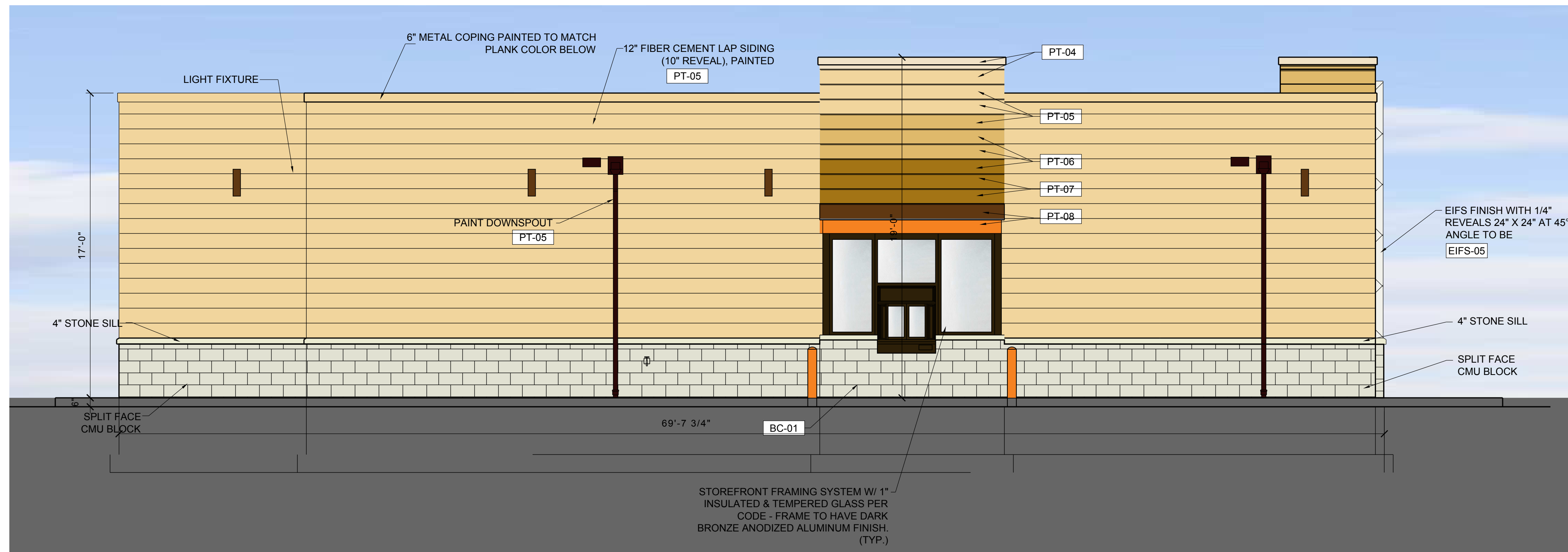
ELEVATIONS

SCALE: 1/4"=1'-0"



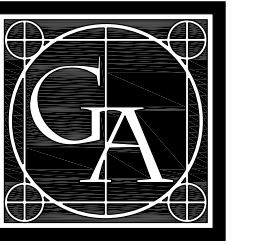
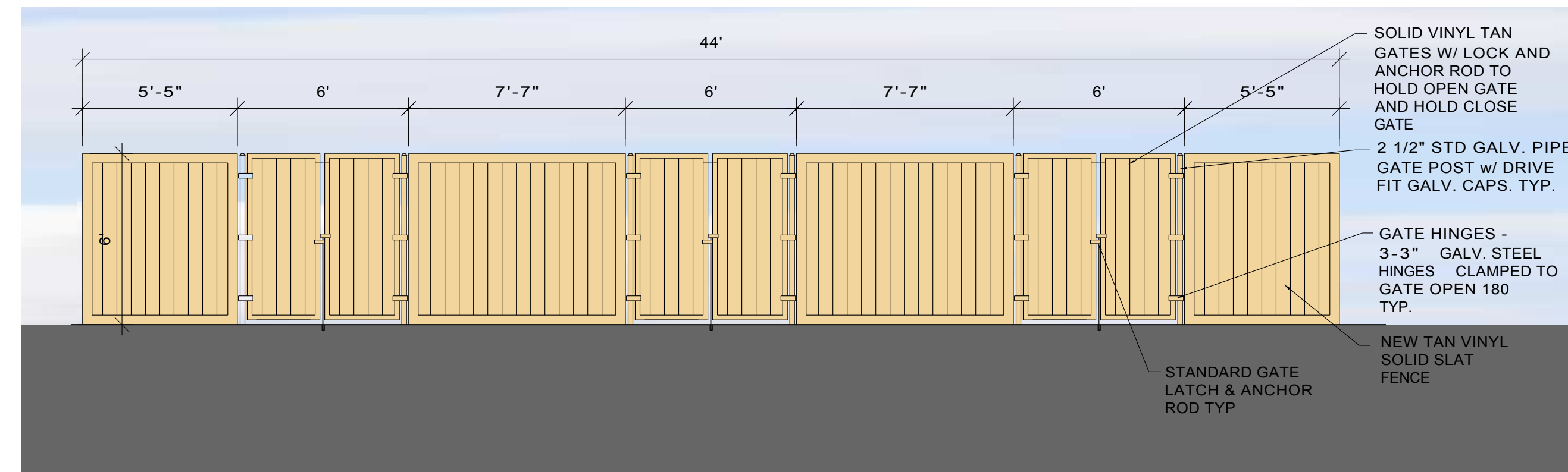
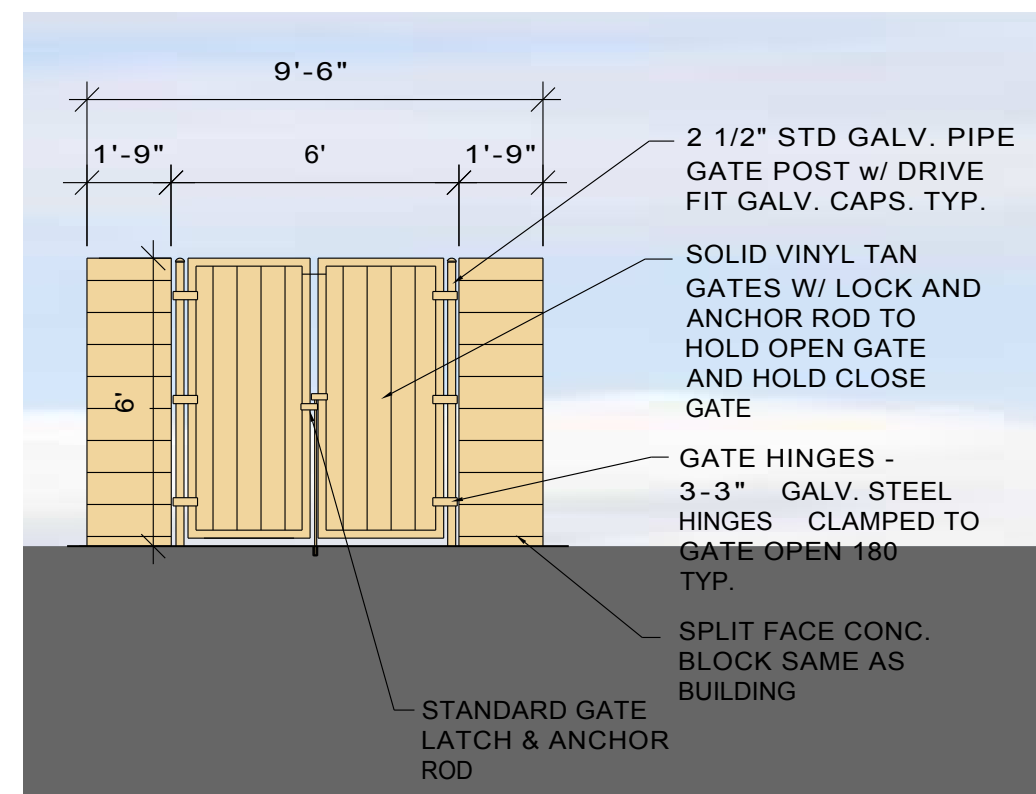
SOUTH ELEVATION

SCALE: 1/4"=1'-0"



EAST ELEVATION

SCALE: 1/4"=1'-0"



GLEASON
ARCHITECTS, P.C.

769 Heartland Drive, Unit A
Sugar Grove, Illinois 60554
Phone: 630-466-8740
Fax: 630-466-8760

E-mail: thadgleason@gleasonarchitectspc.com

THESE DRAWINGS, INCLUDING ALL DESIGNS, DETAILS, SPECIFICATIONS AND INFORMATION, ARE THE SOLE PROPERTY AND COPYRIGHT OF GLEASON ARCHITECTS, P.C. AND ARE FOR USE ON THIS SPECIFIC PROJECT AND SHALL NOT BE USED ON ANY OTHER WORK WITHOUT THE AGREEMENT AND WRITTEN PERMISSION OF GLEASON ARCHITECTS, P.C.

ISSUED	DATE
FOR APPROVAL	
FOR PERMIT	
FOR BID	
FOR CONST.	

REVISIONS	DATE
1	
2	
3	

JOB NO.
DATE
FILE 01-E
PLOT SCALE 1:1

OWNER APPROVAL

Signature _____
Date _____

SHEET TITLE
EXTERIOR ELEVATIONS

SHEET NUMBER
E-2