



North-East View



Site Plan



East Elevation



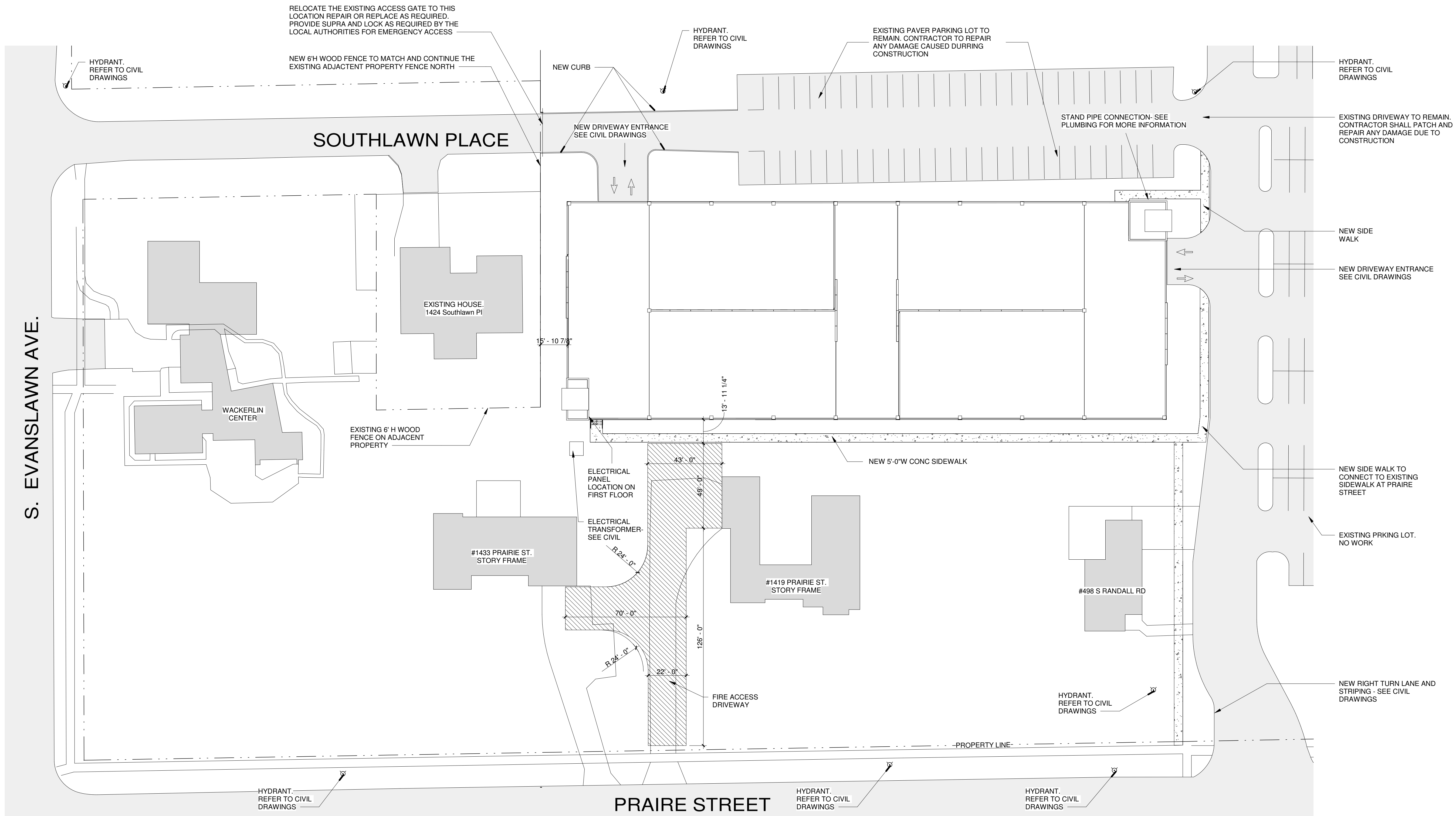
North Elevation

SOUTHLAWN PARKING DECK

AURORA UNIVERSITY

CORDOGAN CLARK & ASSOCIATES INC.
ARCHITECTS ■ ENGINEERS

NORTH
 1 01 Site Plan
 1" = 30'-0"



SITE DATA	
LOT AREA:	1,692,905 SF
BUILDING AREA:	42,804 SF
BUILDING LOT COVERAGE:	2.6%
BUILDING SQUARE FOOTAGE:	
FIRST FLOOR:	42,804 SF
SECOND FLOOR:	42,804 SF
THIRD FLOOR:	42,804 SF
FOURTH FLOOR:	29,676 SF
TOTAL SQUARE FOOTAGE:	158,088 SF
TOTAL PARKING SPACES:	503 SPACES
DETENTION VOLUME:	.61 ACRES / 26,572 CF

- SITE GENERAL NOTES**
- REFER TO CIVIL DRAWINGS FOR SITE UTILITIES, FINAL TOPOGRAPHY, DRAINAGE AND EROSION PROTECTION PLANS.
 - REFER TO LANDSCAPE DRAWINGS FOR LAYOUT AND PLACEMENT OF EXTERIOR SITE WALLS, PLANTINGS AND PAVER AREAS.
 - ALL FINAL GRADING TO BE PER CIVIL DRAGINS, ARCHITECTURAL WORK SUCH AS STAIRS, RAMPS AND WALLS TO BE ADJUSTED AS REQUIRED FOR FINAL GRADES.

CORDOGAN CLARK & ASSOCIATES INC.
 ARCHITECTS • ENGINEERS
 Chicago
 710 North Wells Street
 Chicago, IL 60610
 Tel: 312.943.7300
 Fax: 312.943.4771

1893
 Aurora University

BOLDT
 BUILDS
 Oscar J. Boldt Construction

SOUTHLAWN PARKING DECK
 AURORA UNIVERSITY
 347 GLADSTONE AVE.

SITE PLAN

JOB NUMBER
 18-302
 DATE
 09.28.2018

ISSUED FOR BID 09.28.2018
 REVISIONS:

A0.0

GENERAL NOTES

- REFER TO DRAWING A9.0 FOR DOOR TYPES.
- REFER TO DRAWINGS A9.0 FOR FRAME TYPES.
- REFER TO DRAWING T3.0 FOR PARTITION TYPES.
- REFER TO ENLARGED PLANS FOR DIMENSIONAL INFORMATION AND PARTITION TYPES OF TAGGED AREAS SUCH AS STAIRS, ELEVATOR, AND UNDER-RAMP ROOMS.
- INSTALL FIRE EXTINGUISHER CABINETS WHERE NOTED IN PLAN AND AS NOTED IN THE FIRE PROTECTION DRAWINGS. REFER TO EGRESS PLANS AND SPECIFICATIONS FOR ADDITIONAL INFORMATION INCLUDING CABINET TYPES.
- METAL FRAMING PERFORMANCE CRITERIA: GENERAL TRADES PRIME IS RESPONSIBLE FOR PROVIDING NECESSARY FRAMING, GAUGES, FASTENERS, ETC.
- ALL PENETRATIONS WITHIN FIRE RATED WALLS ARE TO BE SEALED WITH FIRE CAULKING TO MAINTAIN THE SPECIFIED U.L. DESIGN. THE PRIME CONTRACTOR RESPONSIBLE FOR THE PENETRATION IS RESPONSIBLE FOR THE FIRE CAULKING INSTALLATION.
- EXTEND ALL PARTITIONS TO DECK ABOVE UNLESS OTHERWISE NOTED.

STRIPING NOTES

- THE CENTER LINE OF THE DOUBLE STRIPE IS SHOWN ON PLAN UNLESS NOTED.
- ALL FLOOR STRIPES ARE 4" WIDE. DIMENSIONS ARE TO CENTER LINES OF STRIPES, EXCEPT FOR ACCESSIBLE SPACES WHERE DIMENSIONS ARE TO INSIDE FACES OF STRIPES COLOR IS TO BE TRAFFIC YELLOW.
- BLOCKED OUT AREAS ARE TO BE DIAGONALLY STRIPED WITH 4" WIDE STRIPES AT 2'-0" O.C. ON A 45 DEGREE ANGLE WHERE SHOWN ON PLANS AND DETAILS.
- PARKING SPACE STRIPING DIMENSIONS INDICATED ARE NOMINAL DIMENSIONS. TOLERANCES ARE AS FOLLOWS:
 - A. PARKING SPACE LENGTH = INDICATED LENGTH ± 2"
 - B. PARKING SPACE WIDTH = INDICATED WIDTH ± 1"
 - C. BASE LINE LENGTH = INDICATED LENGTH ± 1"
 - D. STRIPE WIDTH = 4" ± 1/4"
 - E. TOTAL OVERALL STRIPING BASELINE DIMENSIONS = INDICATED LENGTH ± 2" PER RUN.
- PARKING SPACE DIMENSIONS INDICATED ARE FROM THE FACE OF WALL OR COLUMN, UNLESS OTHERWISE INDICATED OR NOTED.
- KEY TO STRIPING ABBREVIATIONS:
 - HANDICAP PARKING

SIGNAGE NOTES

- Sx. INDICATES SIGN, REFER TO SIGN SCHEDULE BELOW AND TO DRAWINGS ON A11.0 AND A11.1 FOR SIGN AND DETAILS.
- FOR STRIPING NOTES AND DETAILS REFER TO DRAWING A11.1
- FOR ILLUMINATED "EXIT" SIGNS, REFER TO ELECTRICAL DRAWINGS.

CAR TABULATION CHART

LEVEL	STANDARD CAR		TOTAL
FIRST	131	10	142
SECOND	139	-	139
THIRD	139	-	139
FOURTH	83	-	83
TOTAL	492	10	503

CORDOGAN CLARK & ASSOCIATES INC. ARCHITECTS • ENGINEERS
 Chicago
 710 North Wells Street
 Chicago, IL 60610
 Tel: 312.943.7400
 Fax: 312.943.4771

1893

Aurora University

BOLDT
 BUILDS
 Oscar J. Boldt Construction

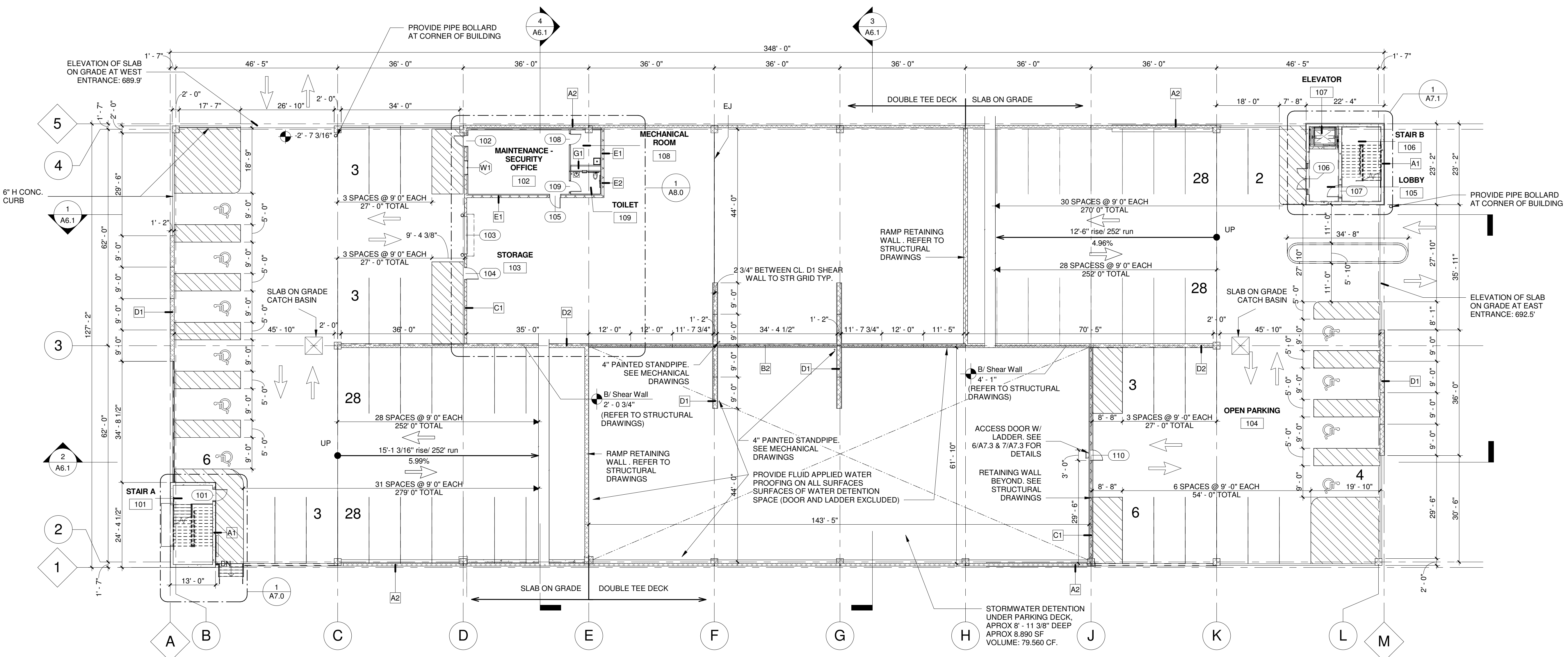
SOUTHLAWN PARKING DECK
 AURORA UNIVERSITY
 347 GLADSTONE AVE.

FIRST FLOOR PLAN

JOB NUMBER 18-302
 DATE 09.28.2018

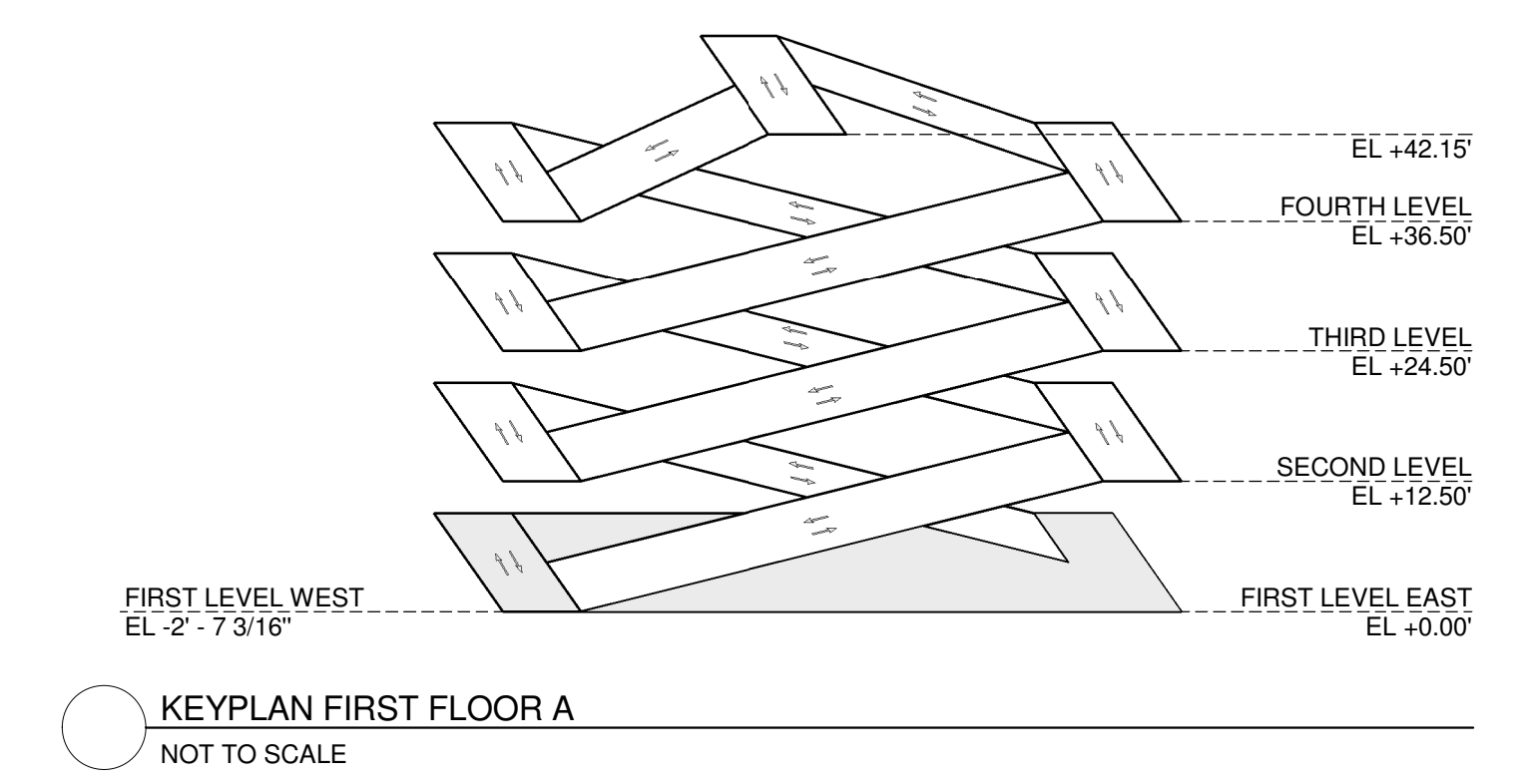
REVISIONS:
 ISSUED FOR BID 09.28.2018

A2.0A



1 FIRST FLOOR PLAN
1/16" = 1'-0"

NOTE: THERE IS AN ELEVATION DIFFERENCE OF 2'-7 3/16" BETWEEN THE ENTRANCES



GENERAL NOTES

- REFER TO DRAWING A9.0 FOR DOOR TYPES.
- REFER TO DRAWINGS A9.0 FOR FRAME TYPES.
- REFER TO DRAWING T3.0 FOR PARTITION TYPES.
- REFER TO ENLARGED PLANS FOR DIMENSIONAL INFORMATION AND PARTITION TYPES OF TAGGED AREAS SUCH AS STAIRS, ELEVATOR, AND UNDER-RAMP ROOMS.
- INSTALL FIRE EXTINGUISHER CABINETS WHERE NOTED IN PLAN AND AS NOTED IN THE FIRE PROTECTION DRAWINGS. REFER TO EGRESS PLANS AND SPECIFICATIONS FOR ADDITIONAL INFORMATION INCLUDING CABINET TYPES.
- METAL FRAMING PERFORMANCE CRITERIA: GENERAL TRADES PRIME IS RESPONSIBLE FOR PROVIDING NECESSARY FRAMING, GAUGES, FASTENERS, ETC.
- ALL PENETRATIONS WITHIN FIRE RATED WALLS ARE TO BE SEALED WITH FIRE CAULKING TO MAINTAIN THE SPECIFIED U.L. DESIGN. THE PRIME CONTRACTOR RESPONSIBLE FOR THE PENETRATION IS RESPONSIBLE FOR THE FIRE CAULKING INSTALLATION.
- EXTEND ALL PARTITIONS TO DECK ABOVE UNLESS OTHERWISE NOTED.

STRIPING NOTES

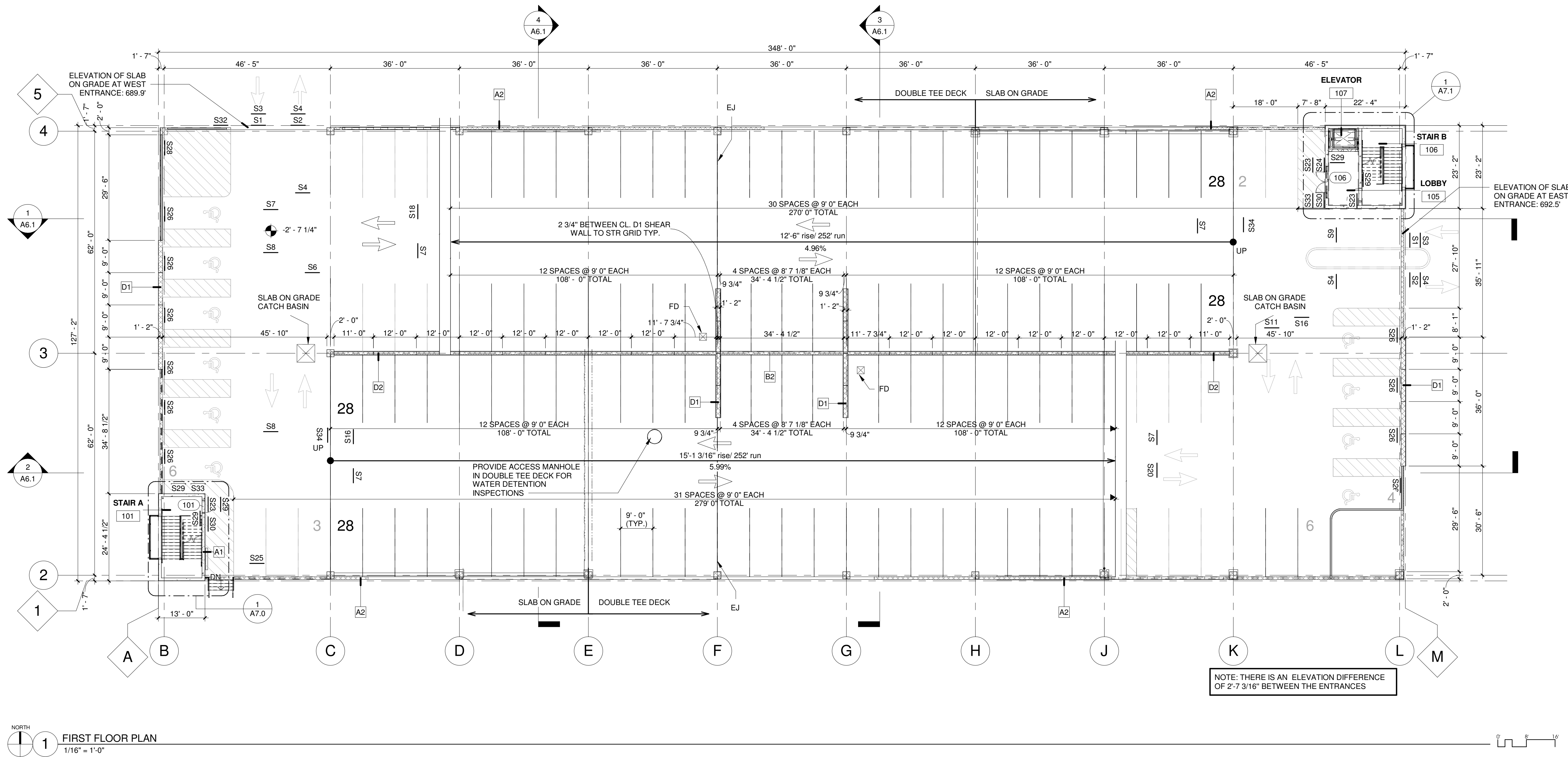
- THE CENTER LINE OF THE DOUBLE STRIPE IS SHOWN ON PLAN UNLESS NOTED.
- ALL FLOOR STRIPES ARE 4" WIDE. DIMENSIONS ARE TO CENTER LINES OF STRIPES, EXCEPT FOR ACCESSIBLE SPACES WHERE DIMENSIONS ARE TO INSIDE FACES OF STRIPES COLOR IS TO BE TRAFFIC YELLOW.
- BLOCKED OUT AREAS ARE TO BE DIAGONALLY STRIPED WITH 4" WIDE STRIPES AT 2'-0" O.C. ON A 45 DEGREE ANGLE WHERE SHOWN ON PLANS AND DETAILS.
- PARKING SPACE STRIPING DIMENSIONS INDICATED ARE NOMINAL DIMENSIONS. TOLERANCES ARE AS FOLLOWS:
 - A. PARKING SPACE LENGTH = INDICATED LENGTH ± 2"
 - B. PARKING SPACE WIDTH = INDICATED WIDTH ± 1"
 - C. BASE LINE LENGTH = INDICATED LENGTH ± 1"
 - D. STRIPE WIDTH = 4" ± 1/4"
 - E. TOTAL OVERALL STRING BASELINE DIMENSIONS = INDICATED LENGTH ± 2" PER RUN.
- PARKING SPACE DIMENSIONS INDICATED ARE FROM THE FACE OF WALL OR COLUMN, UNLESS OTHERWISE INDICATED OR NOTED.
- KEY TO STRIPING ABBREVIATIONS:
 - HANDICAP PARKING

SIGNAGE NOTES

- Sx. INDICATES SIGN, REFER TO SIGN SCHEDULE BELOW AND TO DRAWINGS ON A11.0 AND A11.1 FOR SIGN AND DETAILS.
- FOR STRIPING NOTES AND DETAILS REFER TO DRAWING A11.1
- FOR ILLUMINATED "EXIT" SIGNS, REFER TO ELECTRICAL DRAWINGS.

CAR TABULATION CHART

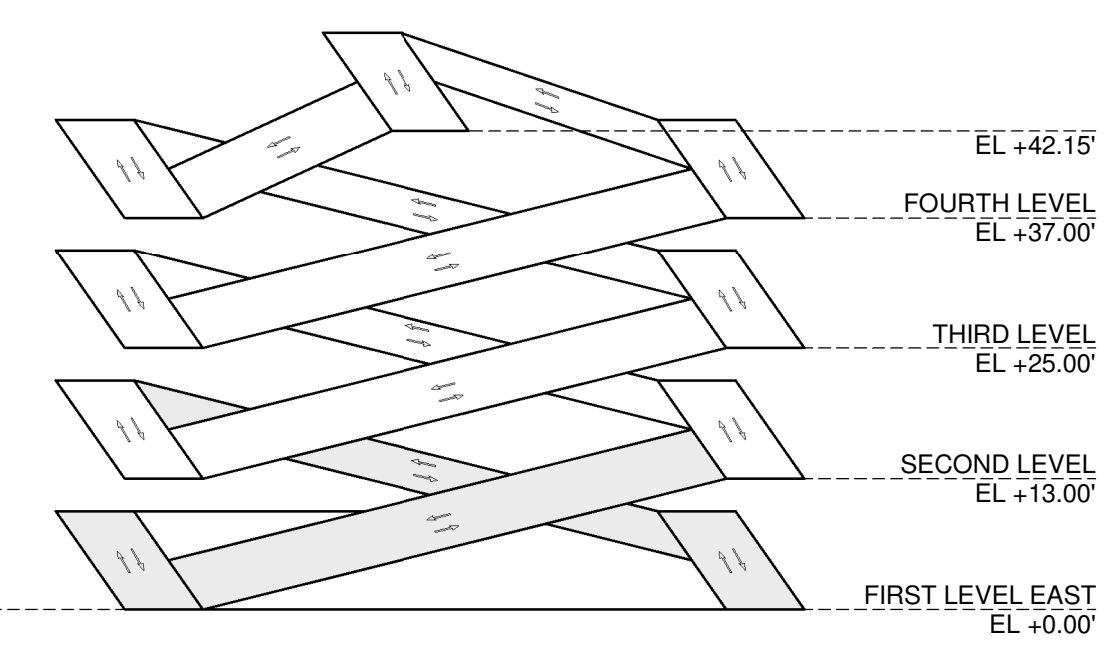
LEVEL	STANDARD CAR		TOTAL
FIRST	131	10	142
SECOND	139	-	139
THIRD	139	-	139
FOURTH	83	-	83
TOTAL	492	10	503



FIRST FLOOR PLAN
1/16" = 1'-0"

SIGN SCHEDULE

MARK	TEXT	DETAIL REF.	MOUNTING DETAIL	MARK	TEXT	DETAIL REF.	MOUNTING DETAIL
S1	8'-2" CLEARANCE 8' - 2"	14/A11.0	1/A11.01	S18	To Southland PL ↑	23/A11.0 (SIM)	4/A11.01
S2	Do Not Enter	15/A11.0	1/A11.01	S23	STAIR	16/A11.0	5/A11.01
S3	↓ ENTER ↓	12/A11.0	-	S24	ELEVATOR	17/A11.0	5/A11.01
S4	EXIT	13/A11.0	-	S25		10/A11.0	6/A11.01
S7	Park ↑	18/A11.0 (SIM)	2/A11.01	S28	NO PARKING	8/A11.0	5/A11.01
S8	← Park	18/A11.0 (SIM)	2/A11.01	S29	LEVEL "Varies"	25/A11.0	5/A11.01
S9	Do Not Enter	18/A11.0 (SIM)	2/A11.01	S30	Emergency Call Station	25/A11.0	5/A11.01
S11	Park →	18/A11.0 (SIM)	2/A11.01	S32	"Entrance sign"	-	-
S12	Exit → Park ↑	19/A11.0	4/A11.01	S33	NON POTABLE WATER	11/A11.01	5/A11.01
S16	→ Exit →	22/A11.0 (SIM)	4/A11.01	S34	Height Clearance	25/A11.0	5/A11.01



KEYPLAN FIRST FLOOR B
3/8" = 1'-0"

GENERAL NOTES

- REFER TO DRAWING A9.0 FOR DOOR TYPES.
- REFER TO DRAWINGS A9.0 FOR FRAME TYPES.
- REFER TO DRAWING T3.0 FOR PARTITION TYPES.
- REFER TO ENLARGED PLANS FOR DIMENSIONAL INFORMATION AND PARTITION TYPES OF TAGGED AREAS SUCH AS STAIRS, ELEVATOR, AND UNDER-RAMP ROOMS.
- INSTALL FIRE EXTINGUISHER CABINETS WHERE NOTED IN PLAN AND AS NOTED IN THE FIRE PROTECTION DRAWINGS. REFER TO EGRESS PLANS AND SPECIFICATIONS FOR ADDITIONAL INFORMATION INCLUDING CABINET TYPES.
- METAL FRAMING PERFORMANCE CRITERIA: GENERAL TRADES PRIME IS RESPONSIBLE FOR PROVIDING NECESSARY FRAMING, GAUGES, FASTENERS, ETC.
- ALL PENETRATIONS WITHIN FIRE RATED WALLS ARE TO BE SEALED WITH FIRE CAULKING TO MAINTAIN THE SPECIFIED U.L. DESIGN. THE PRIME CONTRACTOR RESPONSIBLE FOR THE PENETRATION IS RESPONSIBLE FOR THE FIRE CAULKING INSTALLATION.
- EXTEND ALL PARTITIONS TO DECK ABOVE UNLESS OTHERWISE NOTED.

STRIPING NOTES

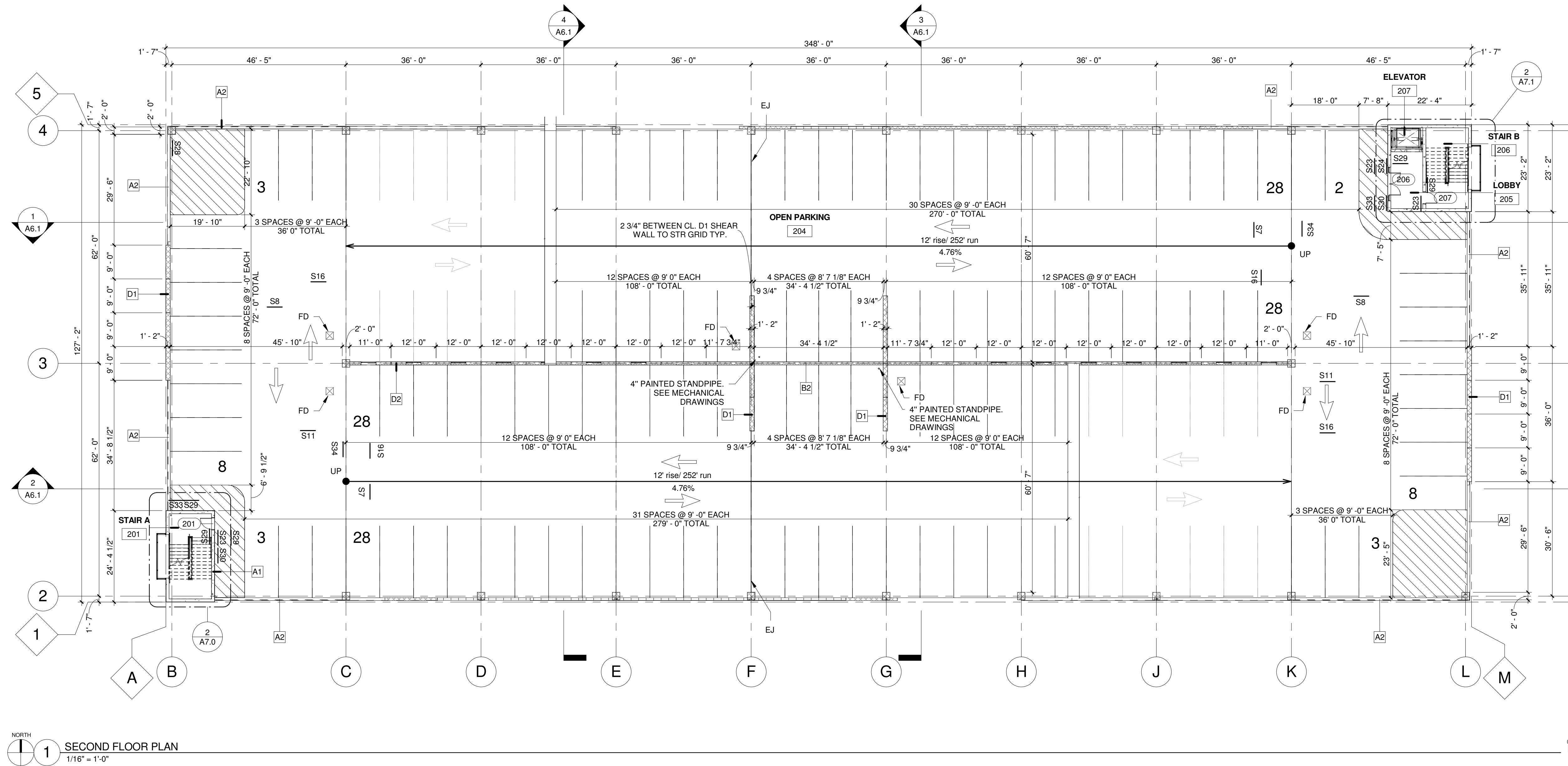
- THE CENTER LINE OF THE DOUBLE STRIPE IS SHOWN ON PLAN UNLESS NOTED.
- ALL FLOOR STRIPES ARE 4" WIDE. DIMENSIONS ARE TO CENTER LINES OF STRIPES, EXCEPT FOR ACCESSIBLE SPACES WHERE DIMENSIONS ARE TO INSIDE FACES OF STRIPES COLOR IS TO BE TRAFFIC YELLOW.
- BLOCKED OUT AREAS ARE TO BE DIAGONALLY STRIPED WITH 4" WIDE STRIPES AT 2'-0" O.C. ON A 45 DEGREE ANGLE WHERE SHOWN ON PLANS AND DETAILS.
- PARKING SPACE STRIPING DIMENSIONS INDICATED ARE NOMINAL DIMENSIONS. TOLERANCES ARE AS FOLLOWS:
 - A. PARKING SPACE LENGTH = INDICATED LENGTH ± 2"
 - B. PARKING SPACE WIDTH = INDICATED WIDTH ± 1"
 - C. BASE LINE LENGTH = INDICATED LENGTH ± 1"
 - D. STRIPE WIDTH = 4" ± 1/4"
 - E. TOTAL OVERALL STRING BASELINE DIMENSIONS = INDICATED LENGTH ± 2" PER RUN.
- PARKING SPACE DIMENSIONS INDICATED ARE FROM THE FACE OF WALL OR COLUMN, UNLESS OTHERWISE INDICATED OR NOTED.
- KEY TO STRIPING ABBREVIATIONS:
 - HANDICAP PARKING

SIGNAGE NOTES

- Sx. INDICATES SIGN, REFER TO SIGN SCHEDULE BELOW AND TO DRAWINGS ON A11.0 AND A11.1 FOR SIGN AND DETAILS.
- FOR STRIPING NOTES AND DETAILS REFER TO DRAWING A11.1
- FOR ILLUMINATED "EXIT" SIGNS, REFER TO ELECTRICAL DRAWINGS.

CAR TABULATION CHART

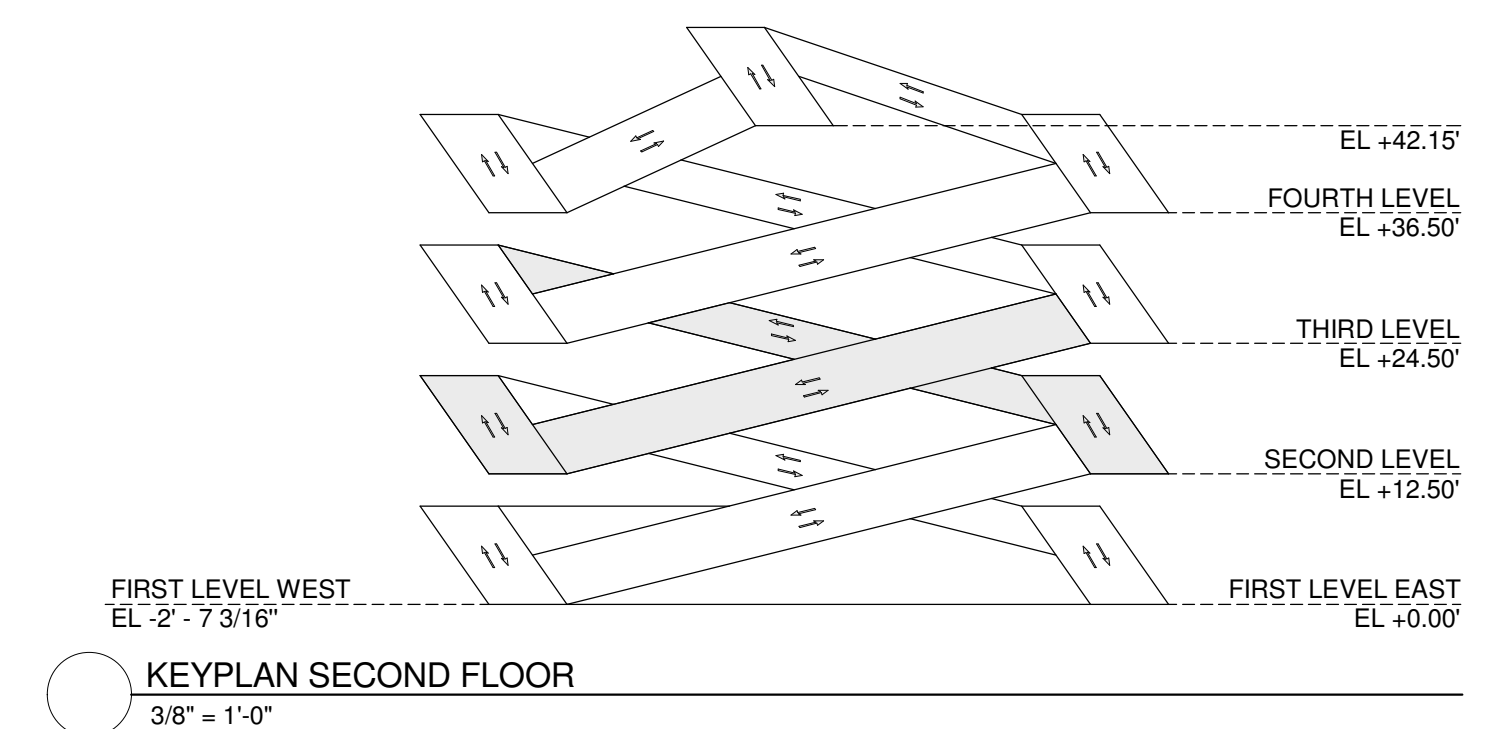
LEVEL	STANDARD CAR		TOTAL
FIRST	131	10	142
SECOND	139	-	139
THIRD	139	-	139
FOURTH	83	-	83
TOTAL	492	10	503



1 SECOND FLOOR PLAN
1/16" = 1'-0"

SIGN SCHEDULE

MARK	TEXT	DETAIL REF.	MOUNTING DETAIL	MARK	TEXT	DETAIL REF.	MOUNTING DETAIL
S1	8' - 2" CLEARANCE 8' - 2"	14/A11.0	1/A11.01	S18	To Southland PL ↑	23/A11.0 (SIM)	4/A11.01
S2	Do Not Enter	15/A11.0	1/A11.01	S23	STAIR	16/A11.0	5/A11.01
S3	↓ ENTER ↓	12/A11.0	-	S24	ELEVATOR	17/A11.0	5/A11.01
S4	EXIT	13/A11.0	-	S25		10/A11.0	6/A11.01
S7	Park ↑	18/A11.0 (SIM)	2/A11.01	S28	NO PARKING	8/A11.0	5/A11.01
S8	← Park	18/A11.0 (SIM)	2/A11.01	S29	LEVEL "Varies"	25/A11.0	5/A11.01
S9	Do Not Enter	18/A11.0 (SIM)	2/A11.01	S30	Emergency Call Station	25/A11.0	5/A11.01
S11	Park →	18/A11.0 (SIM)	2/A11.01	S32	"Entrance sign"	-	-
S12	Exit → Park ↑	19/A11.0	4/A11.01	S33	NON POTABLE WATER	11/A11.01	5/A11.01
S16	→ Exit →	22/A11.0 (SIM)	4/A11.01	S34	Height Clearance	25/A11.0	5/A11.01



KEYPLAN SECOND FLOOR
3/8" = 1'-0"

GENERAL NOTES

- REFER TO DRAWING A9.0 FOR DOOR TYPES.
- REFER TO DRAWINGS A9.0 FOR FRAME TYPES.
- REFER TO DRAWING T3.0 FOR PARTITION TYPES.
- REFER TO ENLARGED PLANS FOR DIMENSIONAL INFORMATION AND PARTITION TYPES OF TAGGED AREAS SUCH AS STAIRS, ELEVATOR, AND UNDER-RAMP ROOMS.
- INSTALL FIRE EXTINGUISHER CABINETS WHERE NOTED IN PLAN AND AS NOTED IN THE FIRE PROTECTION DRAWINGS. REFER TO EGRESS PLANS AND SPECIFICATIONS FOR ADDITIONAL INFORMATION INCLUDING CABINET TYPES.
- METAL FRAMING PERFORMANCE CRITERIA: GENERAL TRADES PRIME IS RESPONSIBLE FOR PROVIDING NECESSARY FRAMING, GAUGES, FASTENERS, ETC.
- ALL PENETRATIONS WITHIN FIRE RATED WALLS ARE TO BE SEALED WITH FIRE CAULKING TO MAINTAIN THE SPECIFIED U.L. DESIGN. THE PRIME CONTRACTOR RESPONSIBLE FOR THE PENETRATION IS RESPONSIBLE FOR THE FIRE CAULKING INSTALLATION.
- EXTEND ALL PARTITIONS TO DECK ABOVE UNLESS OTHERWISE NOTED.

STRIPING NOTES

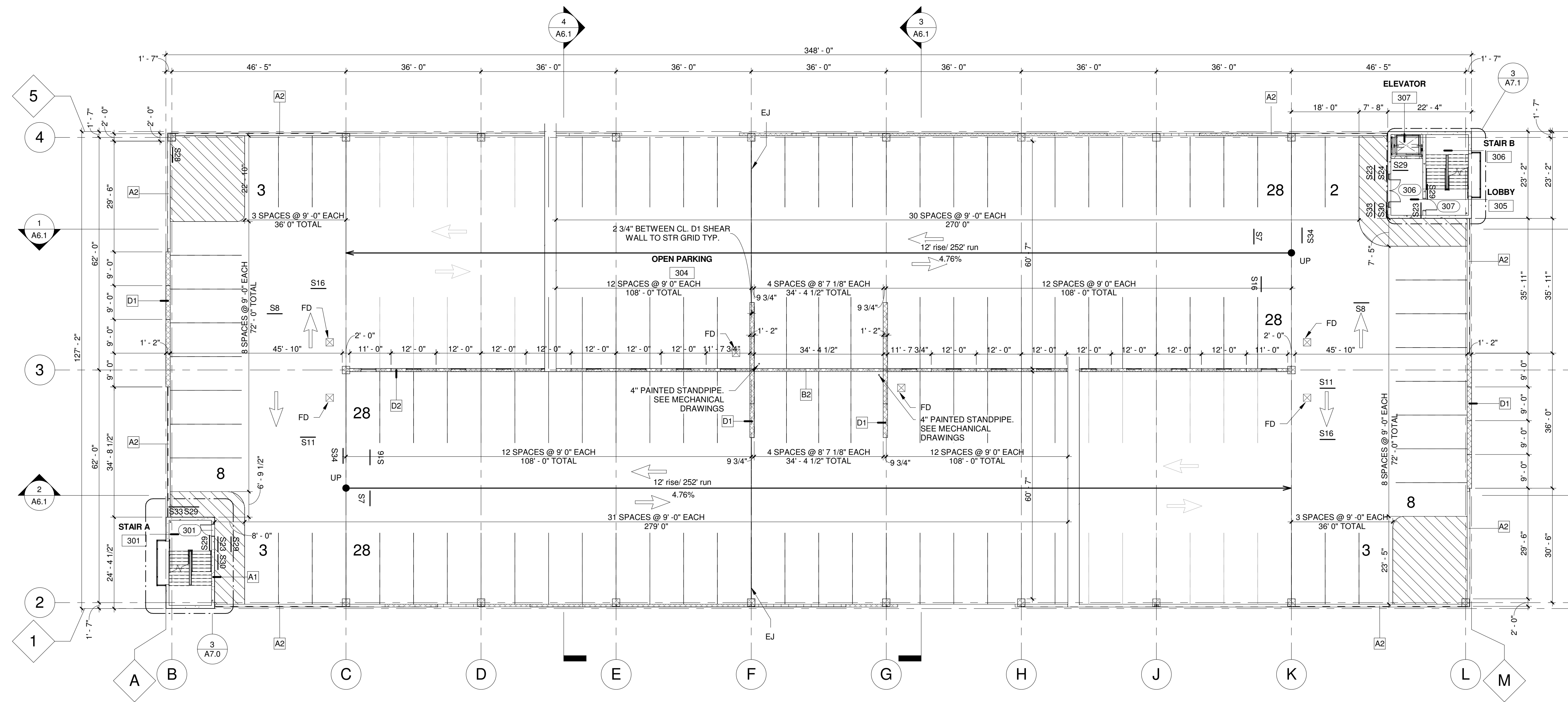
- THE CENTER LINE OF THE DOUBLE STRIPE IS SHOWN ON PLAN UNLESS NOTED.
- ALL FLOOR STRIPES ARE 4" WIDE. DIMENSIONS ARE TO CENTER LINES OF STRIPES, EXCEPT FOR ACCESSIBLE SPACES WHERE DIMENSIONS ARE TO INSIDE FACES OF STRIPES COLOR IS TO BE TRAFFIC YELLOW.
- BLOCKED OUT AREAS ARE TO BE DIAGONALLY STRIPED WITH 4" WIDE STRIPES AT 2'-0" O.C. ON A 45 DEGREE ANGLE WHERE SHOWN ON PLANS AND DETAILS.
- PARKING SPACE STRIPING DIMENSIONS INDICATED ARE NOMINAL DIMENSIONS. TOLERANCES ARE AS FOLLOWS:
 - A. PARKING SPACE LENGTH = INDICATED LENGTH ± 2"
 - B. PARKING SPACE WIDTH = INDICATED WIDTH ± 1"
 - C. BASE LINE LENGTH = INDICATED LENGTH ± 1"
 - D. STRIPE WIDTH = 4" ± 1/4"
 - E. TOTAL OVERALL STRIPING BASELINE DIMENSIONS = INDICATED LENGTH ± 2" PER RUN.
- PARKING SPACE DIMENSIONS INDICATED ARE FROM THE FACE OF WALL OR COLUMN, UNLESS OTHERWISE INDICATED OR NOTED.
- KEY TO STRIPING ABBREVIATIONS:
 - ⊞ -- HANDICAP PARKING

SIGNAGE NOTES

- Sxx INDICATES SIGN, REFER TO SIGN SCHEDULE BELOW AND TO DRAWINGS ON A11.0 AND A11.1 FOR SIGN AND DETAILS.
- FOR STRIPING NOTES AND DETAILS REFER TO DRAWING A11.1
- FOR ILLUMINATED "EXIT" SIGNS, REFER TO ELECTRICAL DRAWINGS.

CAR TABULATION CHART

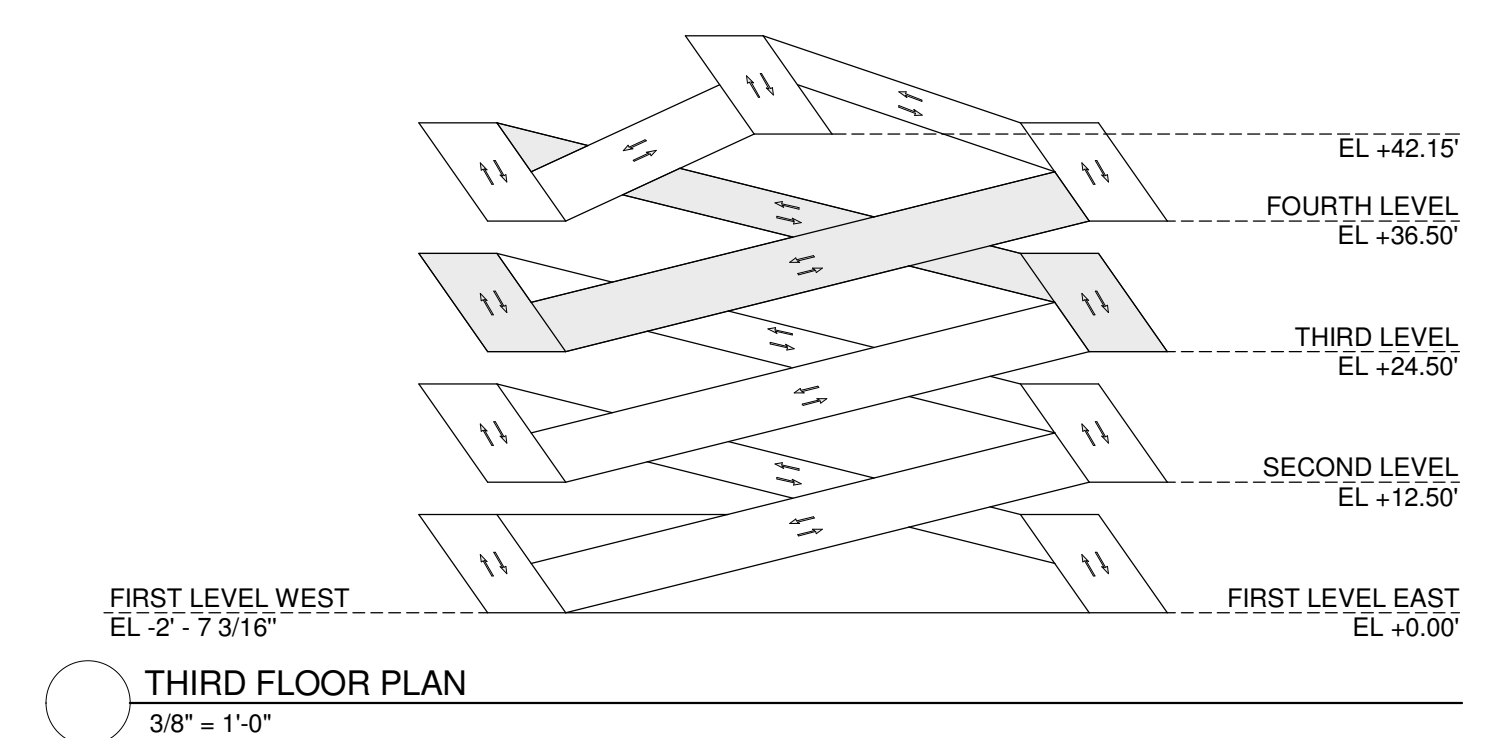
LEVEL	STANDARD CAR	⊞	TOTAL
FIRST	131	10	142
SECOND	139	-	139
THIRD	139	-	139
FOURTH	83	-	83
TOTAL	492	10	503



1 THIRD FLOOR PLAN
1/16" = 1'-0"

SIGN SCHEDULE

MARK	TEXT	DETAIL REF.	MOUNTING DETAIL	MARK	TEXT	DETAIL REF.	MOUNTING DETAIL
S1	8'-2" CLEARANCE 8'-2"	14/A11.0	1/A11.01	S18	To Southland PL ↑	23/A11.0 (SIM)	4/A11.01
S2	Do Not Enter	15/A11.0	1/A11.01	S23	STAIR	16/A11.0	5/A11.01
S3	↓ ENTER ↓	12/A11.0	-	S24	ELEVATOR	17/A11.0	5/A11.01
S4	EXIT	13/A11.0	-	S25		10/A11.0	6/A11.01
S7	Park ↑	18/A11.0 (SIM)	2/A11.01	S28	NO PARKING	8/A11.0	5/A11.01
S8	← Park	18/A11.0 (SIM)	2/A11.01	S29	LEVEL "Varies"	25/A11.0	5/A11.01
S9	Do Not Enter	18/A11.0 (SIM)	2/A11.01	S30	Emergency Call Station	25/A11.0	5/A11.01
S11	Park →	18/A11.0 (SIM)	2/A11.01	S32	"Entrance sign"	-	-
S12	Exit → Park ↑	19/A11.0	4/A11.01	S33	NON POTABLE WATER	11/A11.01	5/A11.01
S16	→ Exit →	22/A11.0 (SIM)	4/A11.01	S34	Height Clearance	25/A11.0	5/A11.01



1 THIRD FLOOR PLAN
3/8" = 1'-0"

GENERAL NOTES

- REFER TO DRAWING A9.0 FOR DOOR TYPES.
- REFER TO DRAWINGS A9.0 FOR FRAME TYPES.
- REFER TO DRAWING T3.0 FOR PARTITION TYPES.
- REFER TO ENLARGED PLANS FOR DIMENSIONAL INFORMATION AND PARTITION TYPES OF TAGGED AREAS SUCH AS STAIRS, ELEVATOR, AND UNDER-RAMP ROOMS.
- INSTALL FIRE EXTINGUISHER CABINETS WHERE NOTED IN PLAN AND AS NOTED IN THE FIRE PROTECTION DRAWINGS. REFER TO EGRESS PLANS AND SPECIFICATIONS FOR ADDITIONAL INFORMATION INCLUDING CABINET TYPES.
- METAL FRAMING PERFORMANCE CRITERIA: GENERAL TRADES PRIME IS RESPONSIBLE FOR PROVIDING NECESSARY FRAMING, GAUGES, FASTENERS, ETC.
- ALL PENETRATIONS WITHIN FIRE RATED WALLS ARE TO BE SEALED WITH FIRE CAULKING TO MAINTAIN THE SPECIFIED U.L. DESIGN. THE PRIME CONTRACTOR RESPONSIBLE FOR THE PENETRATION IS RESPONSIBLE FOR THE FIRE CAULKING INSTALLATION.
- EXTEND ALL PARTITIONS TO DECK ABOVE UNLESS OTHERWISE NOTED.

STRIPING NOTES

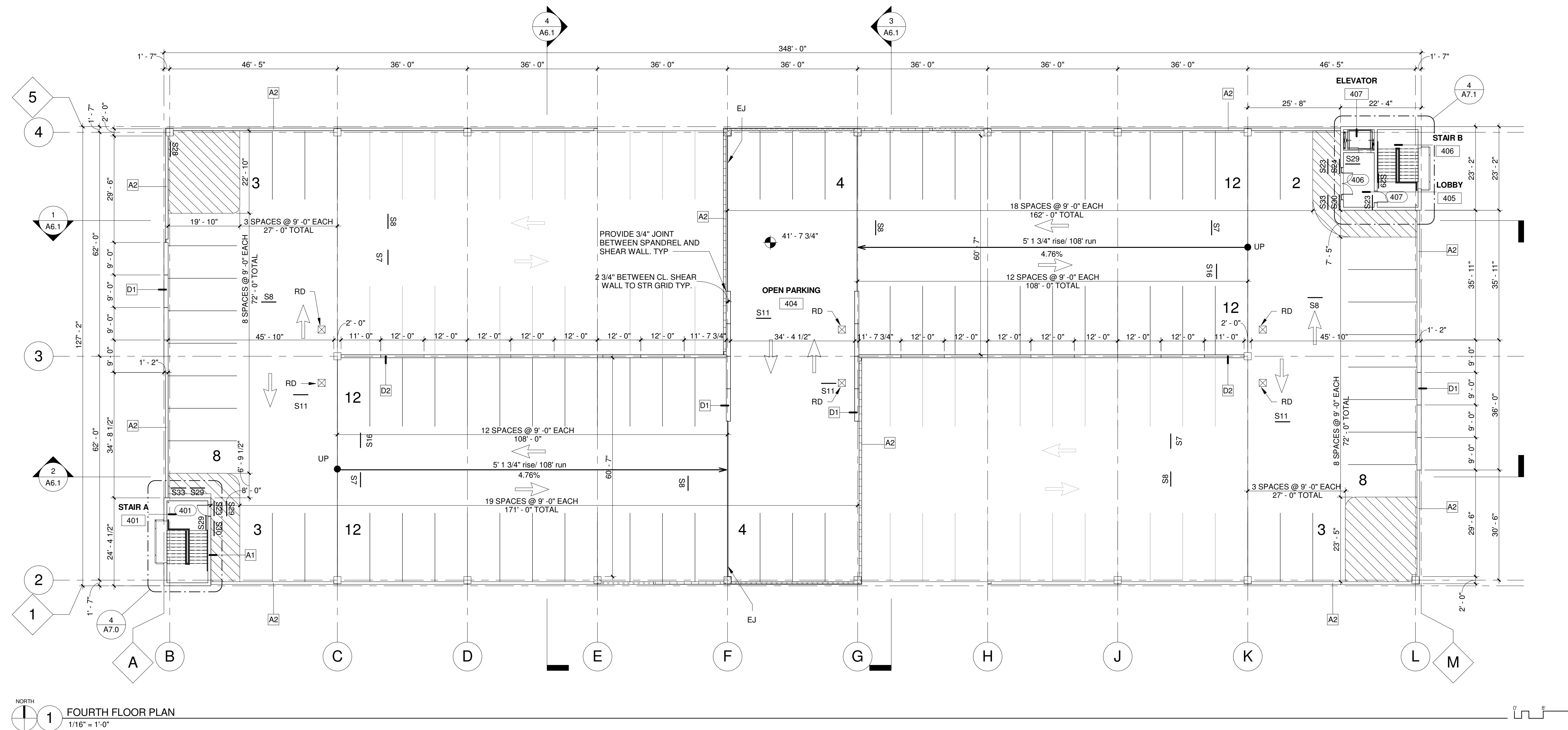
- THE CENTER LINE OF THE DOUBLE STRIPE IS SHOWN ON PLAN UNLESS NOTED.
- ALL FLOOR STRIPES ARE 4" WIDE. DIMENSIONS ARE TO CENTER LINES OF STRIPES, EXCEPT FOR ACCESSIBLE SPACES WHERE DIMENSIONS ARE TO INSIDE FACES OF STRIPES COLOR IS TO BE TRAFFIC YELLOW.
- BLOCKED OUT AREAS ARE TO BE DIAGONALLY STRIPED WITH 4" WIDE STRIPES AT 2'-0" O.C. ON A 45 DEGREE ANGLE WHERE SHOWN ON PLANS AND DETAILS.
- PARKING SPACE STRIPING DIMENSIONS INDICATED ARE NOMINAL DIMENSIONS. TOLERANCES ARE AS FOLLOWS:
 - A. PARKING SPACE LENGTH = INDICATED LENGTH ± 2"
 - B. PARKING SPACE WIDTH = INDICATED WIDTH ± 1"
 - C. BASE LINE LENGTH = INDICATED LENGTH ± 1"
 - D. STRIPE WIDTH = 4" ± 1/4"
 - E. TOTAL OVERALL STRIPING BASELINE DIMENSIONS = INDICATED LENGTH ± 2" PER RUN.
- PARKING SPACE DIMENSIONS INDICATED ARE FROM THE FACE OF WALL OR COLUMN, UNLESS OTHERWISE INDICATED OR NOTED.
- KEY TO STRIPING ABBREVIATIONS:
 - ⊞ -- HANDICAP PARKING

SIGNAGE NOTES

- Sx. INDICATES SIGN, REFER TO SIGN SCHEDULE BELOW AND TO DRAWINGS ON A11.0 AND A11.1 FOR SIGN AND DETAILS.
- FOR STRIPING NOTES AND DETAILS REFER TO DRAWING A11.1
- FOR ILLUMINATED "EXIT" SIGNS, REFER TO ELECTRICAL DRAWINGS.

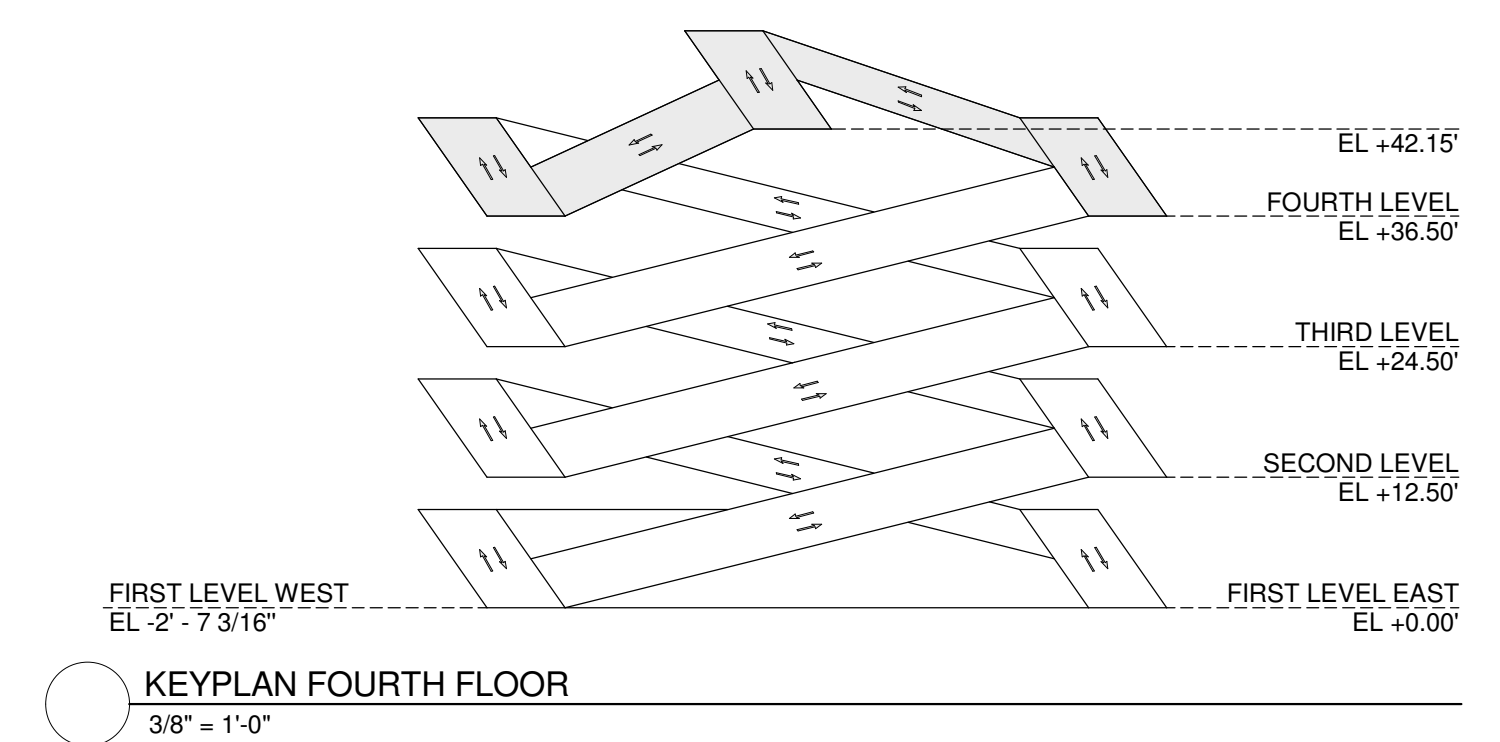
CAR TABULATION CHART

LEVEL	STANDARD CAR	⊞	TOTAL
FIRST	131	10	142
SECOND	139	-	139
THIRD	139	-	139
FOURTH	83	-	83
TOTAL	492	10	503



FOURTH FLOOR PLAN
1/16" = 1'-0"

SIGN SCHEDULE							
MARK	TEXT	DETAIL REF.	MOUNTING DETAIL	MARK	TEXT	DETAIL REF.	MOUNTING DETAIL
S1	8' - 2" CLEARANCE 8' - 2"	14/A11.0	1/A11.01	S18	To Southland PL ↑	23/A11.0 (SIM)	4/A11.01
S2	Do Not Enter	15/A11.0	1/A11.01	S23	STAIR	16/A11.0	5/A11.01
S3	↓ ENTER ↓	12/A11.0	-	S24	ELEVATOR	17/A11.0	5/A11.01
S4	EXIT	13/A11.0	-	S25		10/A11.0	6/A11.01
S7	Park ↑	18/A11.0 (SIM)	2/A11.01	S28	NO PARKING	8/A11.0	5/A11.01
S8	← Park	18/A11.0 (SIM)	2/A11.01	S29	LEVEL "Varies"	25/A11.0	5/A11.01
S9	Do Not Enter	18/A11.0 (SIM)	2/A11.01	S30	Emergency Call Station	25/A11.0	5/A11.01
S11	Park →	18/A11.0 (SIM)	2/A11.01	S32	"Entrance sign"	-	-
S12	Exit → Park ↑	19/A11.0	4/A11.01	S33	NON POTABLE WATER	11/A11.01	5/A11.01
S16	→ Exit →	22/A11.0 (SIM)	4/A11.01	S34	Height Clearance	25/A11.0	5/A11.01



KEYPLAN FOURTH FLOOR
3/8" = 1'-0"