

[07.08.2024]



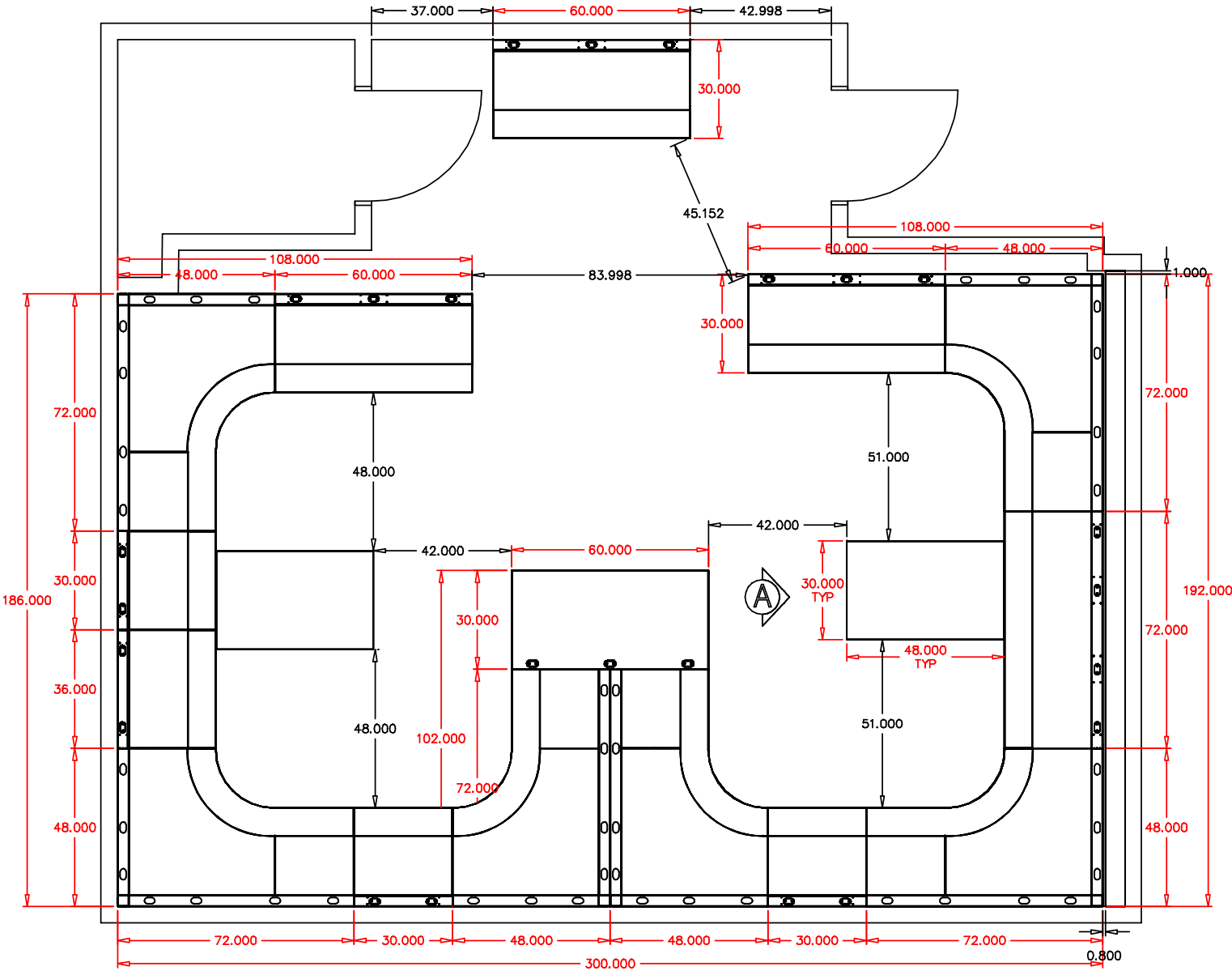
COA POLICE DEPARTMENT

DIGITAL EVIDENCE ROOM



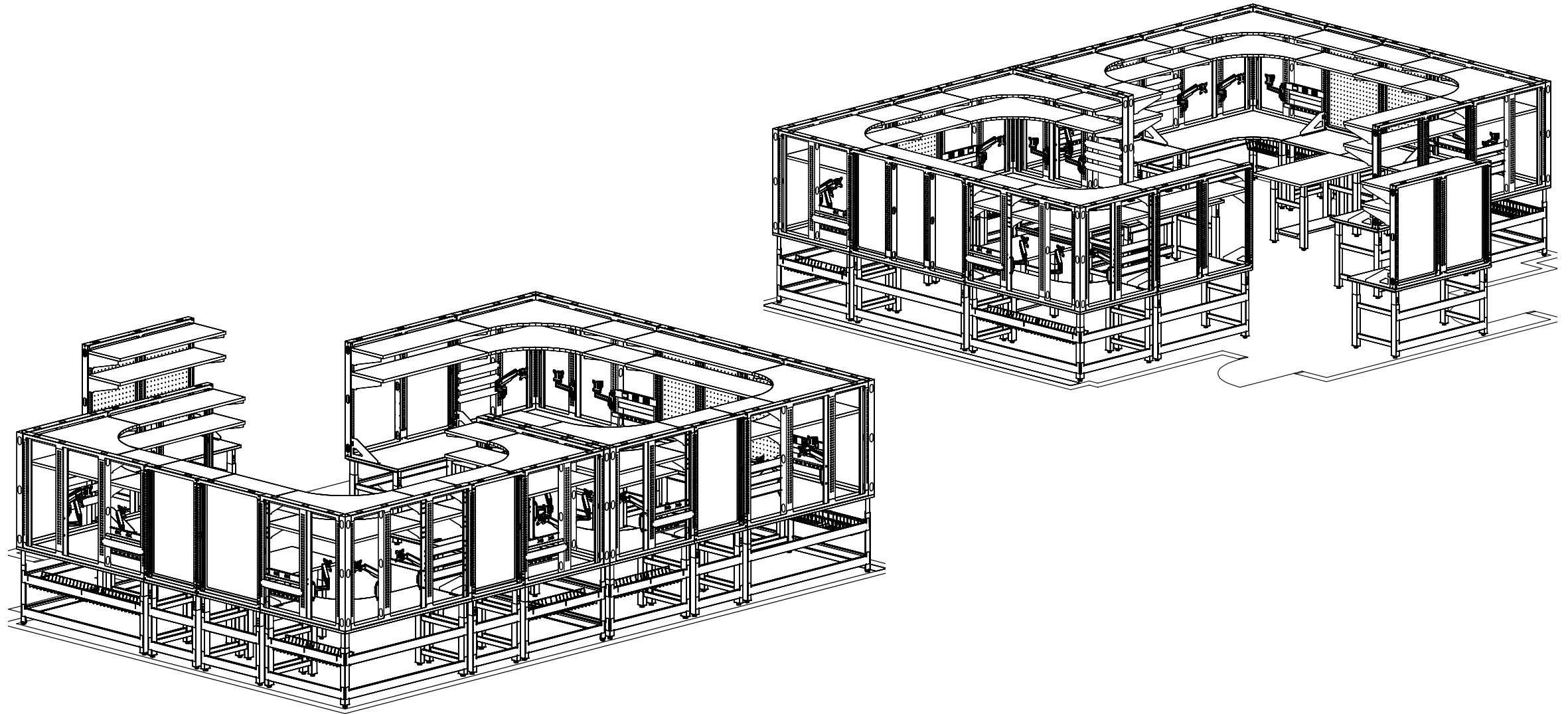
Bringing *life* to work

EVIDENCE ROOM
FURNITURE DRAWINGS

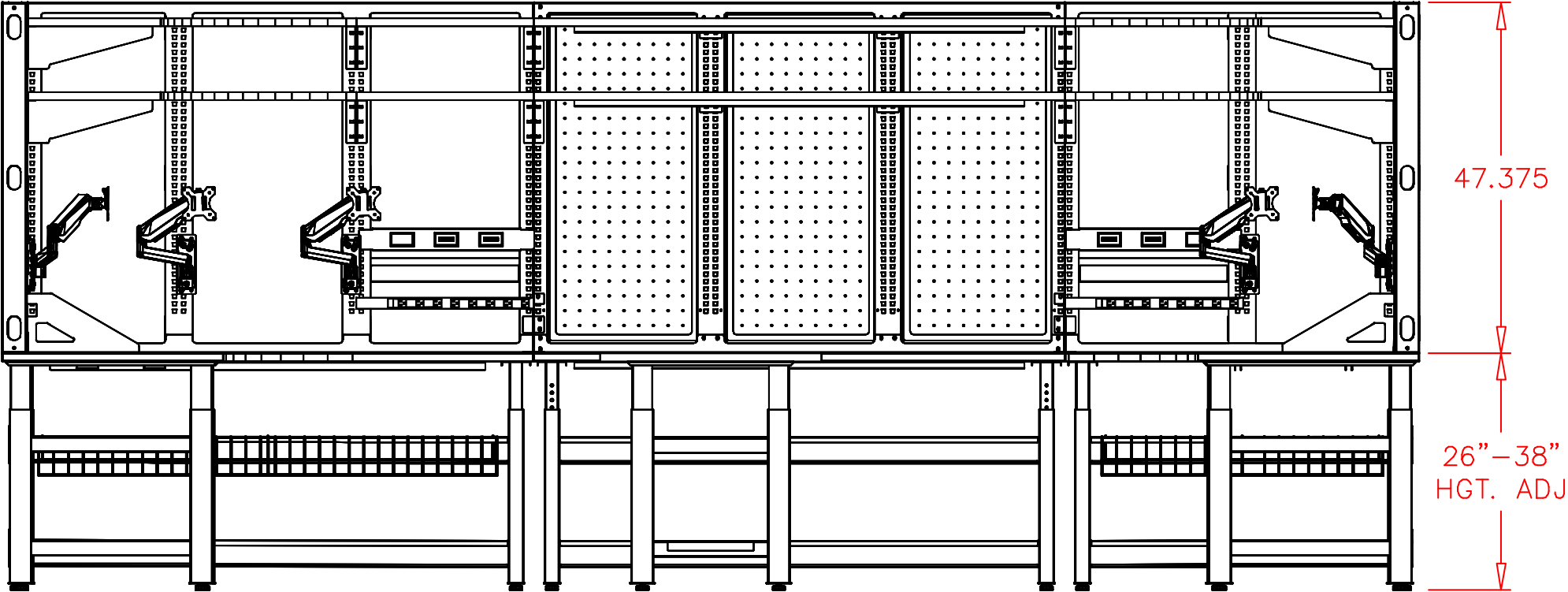


EVIDENCE ROOM

FURNITURE DRAWINGS



EVIDENCE ROOM
FURNITURE DRAWINGS

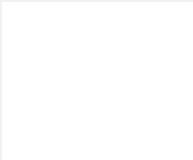


EVIDENCE ROOM

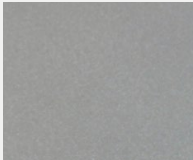
FURNITURE DRAWINGS



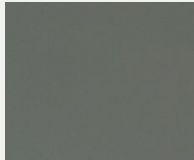
POWDER COAT PAINT



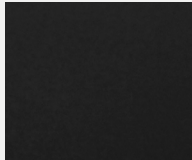
WHITE



TECHSILVER



TEXTURED
GRAY

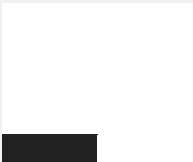


TEXTURED
GRAPHITE



TEXTURED
BLACK

WORKSURFACE & EDGE BANDS



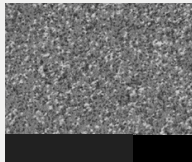
DESIGNER WHITE
HPL w/WHITE OR
BLACK EDGE BAND



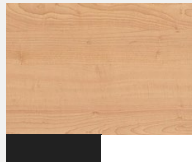
FASHION GRAY HPL
w/WHITE OR ICE
GRAY EDGE BAND



BLACK HPL w/
WHITE OR BLACK
EDGE BAND



STORM GRAY HPL
MATRIX w/BLACK
EDGE BAND



FUSION MAPLE HPL
w/WHITE OR BLACK
EDGE BAND



BUTCHER BLOCK



GRAY ESD w/BLACK
WHITE OR ICE GRAY
EDGE BAND



16-GAUGE
STAINLESS STEEL
(TYPE 304) w/#4
BRUSH FINISH

FABRICS



BIRCH BARK



SILVER PAPLER



BAYBERRY



BISCUIT



Thank you. We're grateful for the opportunity to work together.



Bringing *life* to work