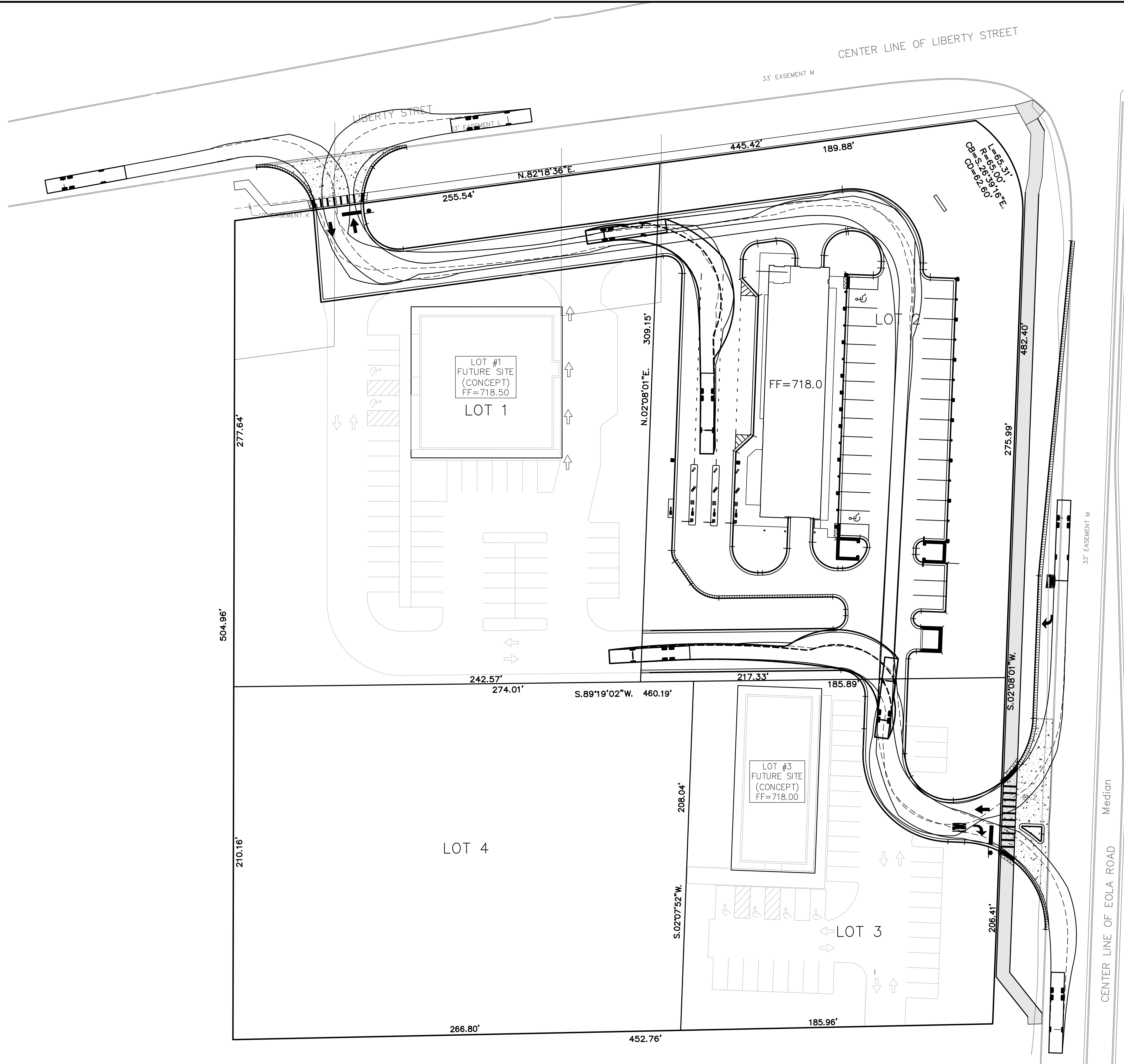


PLOT FILE CREATED: 5/11/2024 8:20 AM BY: JONATAN MARTINEZ DRAWING LAST SAVED: 5/28/2024 5:29 PM BY: JEFFERANEC DRAWING PATH: P:\604487\ENG\DRAWINGS\FINAL DRAFTING\EMERGENCY.DWG



Fire Access Plan Data Table		
Description	Value	Unit
a) Building Height	-	feet
b) Building Square Footage (typical)	15,715	square feet
c) Building fire suppression information including any proposed use of sprinkler systems, fire alarm systems, whether fire extinguishers are needed: no fire sprinkler. fire extinguishers provided within the occupied spaces, per code.		
d) General description of business to be conducted within each building including: will there be rack storage in the building, will there be storage of combustible materials over twelve feet in height, clearance of sprinkler heads and stored materials (18 inch minimum): Lot 1 - Undesignated Use Lot 2 - Car Wash Lot 3 - Undesignated Use		

EMERGENCY VEHICLE DETAILS

N.T.S.

AURORA

OVERALL LENGTH	48'
OVERALL WIDTH	8'
OVERALL BODY HEIGHT	7.72'
MIN BODY GROUND CLEARANCE	0.63'
TRACK WIDTH	8'
LOCK-TO-LOCK TIME	5.00 S
WALL TO WALL TURNING RADIUS	39.92'

PREPARED FOR:
HARBOUR CONTRACTORS, INC.
23830 W. MAIN ST.
PLAINFIELD, IL 60544
(815)-254-5500

PREPARED BY:
CEMCON, Ltd.
Consulting Engineers, Land Surveyors & Planners
2280 White Oak Circle, Suite 100
Aurora, Illinois 60502-9675
Ph: 630.862.2100 Fax: 630.862.2199
E-Mail: info@cemcon.com Website: www.cemcon.com

REVISIONS		
NO.	DATE	DESCRIPTION

EMERGENCY VEHICLE ACCESSIBILITY EXHIBIT

QUICKSHINE CAR WASH

FILE NAME: EMERGENCY	DSGN. BY: MJS	JOB NO.: 904.487	FLD. BK./PG.:	SHEET NO.
DIR: 904487	DRN. BY: JM	DATE: 06-11-24	SCALE: 1" =	16 of 16