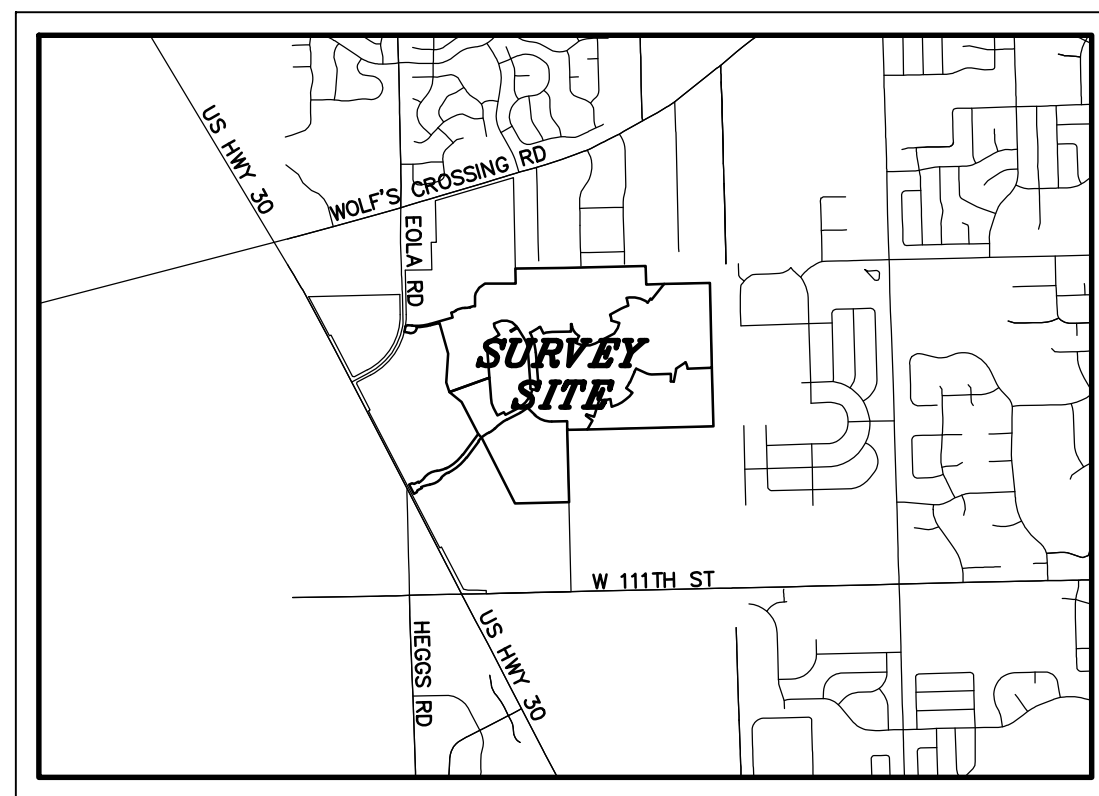
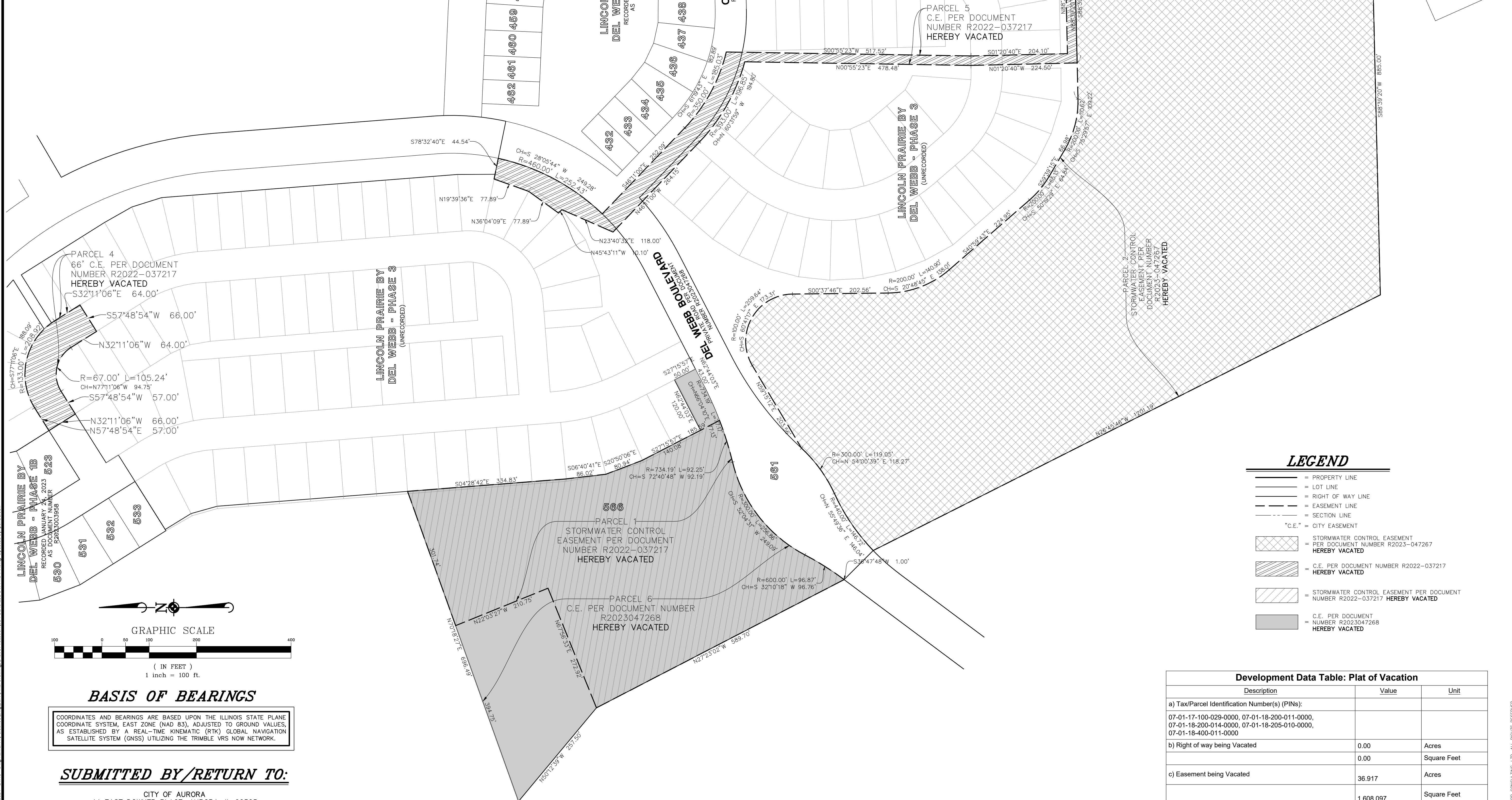


PLAT OF VACATION

PART OF THE EAST HALF OF SECTION 18 AND PART OF THE NORTHWEST QUARTER OF SECTION 17, TOWNSHIP 37 NORTH, RANGE 9, EAST OF THE THIRD PRINCIPAL MERIDIAN, IN WILL COUNTY, ILLINOIS.



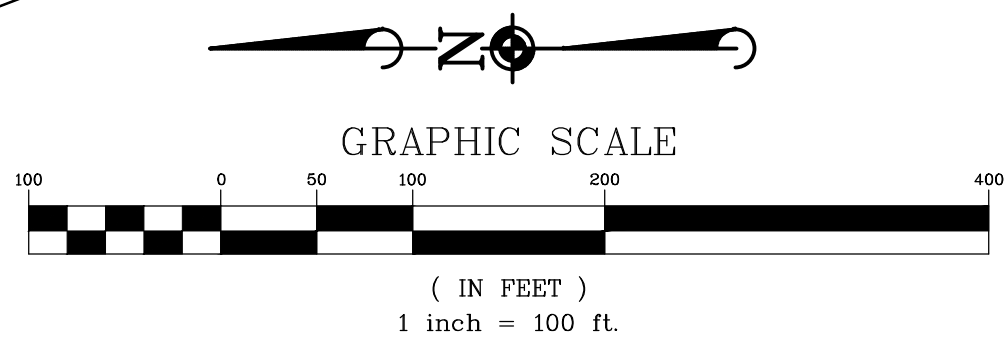
LOCATION MAP
NOT TO SCALE



LEGEND

- = PROPERTY LINE
- = LOT LINE
- = RIGHT OF WAY LINE
- = EASEMENT LINE
- = SECTION LINE
- = CITY EASEMENT
- = STORMWATER CONTROL EASEMENT PER DOCUMENT NUMBER R2023-047267 HEREBY VACATED
- = C.E. PER DOCUMENT NUMBER R2022-037217 HEREBY VACATED
- = STORMWATER CONTROL EASEMENT PER DOCUMENT NUMBER R2022-037217 HEREBY VACATED
- = C.E. PER DOCUMENT NUMBER R2023047268 HEREBY VACATED

Development Data Table: Plat of Vacation		
Description	Value	Unit
a) Tax/Parcel Identification Number(s) (PINs):		
07-01-17-100-029-0000, 07-01-18-200-011-0000, 07-01-18-200-014-0000, 07-01-18-205-010-0000, 07-01-18-400-011-0000		
b) Right of way being Vacated	0.00	Acres
	0.00	Square Feet
c) Easement being Vacated	36.917	Acres
	1,608,097	Square Feet



COORDINATES AND BEARINGS ARE BASED UPON THE ILLINOIS STATE PLANE COORDINATE SYSTEM, EAST ZONE (NAD 83), ADJUSTED TO GROUND VALUES, AS ESTABLISHED BY A REAL-TIME KINEMATIC (RTK) GLOBAL NAVIGATION SATELLITE SYSTEM (GNSS) UTILIZING THE TRIMBLE VRS NOW NETWORK.

SUBMITTED BY/RETURN TO:
CITY OF AURORA
44 EAST DOWNER PLACE, AURORA, IL 60505

DATE	REVISIONS

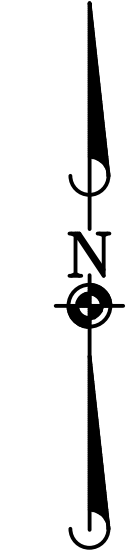
Manhard CONSULTING
PROPOSED DEVELOPMENT FOR:
OWNER: DEL WEBB DEVELOPMENT, INC.
DEVELOPER: DEL WEBB DEVELOPMENT, INC.
PETITIONER: PALTE HOME COMPANY
1900 E GOLF ROAD, SUITE 300
AURORA, IL 60504
CONTACT: MATT BROLEY, P.E.
(630) 772-9293

LINCOLN PRAIRIE BY DEL WEBB
AURORA, ILLINOIS
PLAT OF VACATION

PLAT OF VACATION

PART OF THE EAST HALF OF SECTION 18 AND
PART OF THE NORTHWEST QUARTER OF SECTION 17, TOWNSHIP 37 NORTH, RANGE
9, EAST OF THE THIRD PRINCIPAL MERIDIAN, IN WILL COUNTY, ILLINOIS.

CITY RESOLUTION: _____ PASSED ON: _____



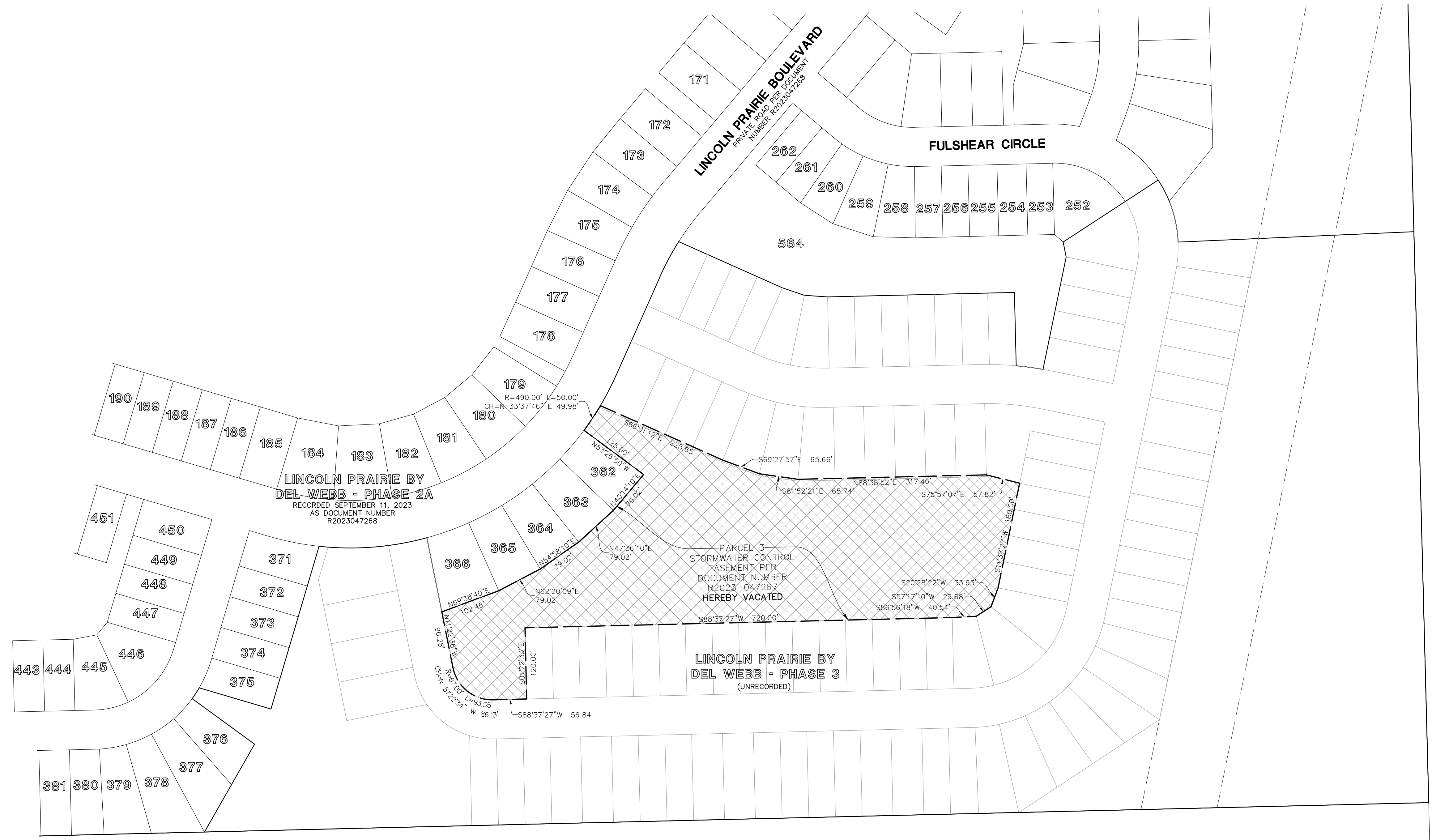
(IN FEET)
1 inch = 100 ft.

BASIS OF BEARINGS

COORDINATES AND BEARINGS ARE BASED UPON THE ILLINOIS STATE PLANE COORDINATE SYSTEM, EAST ZONE (NAD 83), ADJUSTED TO GROUND VALUES, AS ESTABLISHED BY A REAL-TIME KINEMATIC (RTK) GLOBAL NAVIGATION SATELLITE SYSTEM (GNSS) UTILIZING THE TRIMBLE VRS NOW NETWORK.

LEGEND

- = PROPERTY LINE
- = LOT LINE
- = RIGHT OF WAY LINE
- = EASEMENT LINE
- = SECTION LINE
- = "C.E." = CITY EASEMENT
- = STORMWATER CONTROL EASEMENT PER DOCUMENT NUMBER R2023-047267 HEREBY VACATED
- = C.E. PER DOCUMENT NUMBER R2022-037217 HEREBY VACATED
- = STORMWATER CONTROL EASEMENT PER DOCUMENT NUMBER R2022-037217 HEREBY VACATED
- = C.E. PER DOCUMENT NUMBER R2023047268 HEREBY VACATED



DATE	REVISIONS	BY
08/27/24	REVISED PER CITY COMMENTS	PGA

Manhard CONSULTING
 1900 E GOLF ROAD, SUITE 300
 PULAUILLO, ILLINOIS 62453
 CONTACT: MATT BROLEY, P.E.
 (618) 772-9293

LINCOLN PRAIRIE BY DEL WEBB
AURORA, ILLINOIS
PLAT OF VACATION

PROJ. MGR.: JD
 PROJ. ASSOC.: PGA
 DRAWN BY: PGA
 DATE: 08/27/24
 SCALE: 1"=100'

SHEET
2 OF **3**
 PULAUILLO1

September 20, 2024 - 14:45 Dwg Name: C:\Pulauil01\Draw\Drawings\Plat of Vacation01-PULAUIL01.DWG P13.PV.dwg Updated by: panderson

© 2024 MANHARD CONSULTING, LTD. ALL RIGHTS RESERVED.

PLAT OF VACATION

PART OF THE EAST HALF OF SECTION 18 AND PART OF THE NORTHWEST QUARTER OF SECTION 17, TOWNSHIP 37 NORTH, RANGE 9, EAST OF THE THIRD PRINCIPAL MERIDIAN, IN WILL COUNTY, ILLINOIS.

CITY RESOLUTION: _____ PASSED ON: _____

FRANCHISE CERTIFICATE

STATE OF ILLINOIS)
)SS
COUNTY OF WILL)

THE UNDERSIGNED HEREBY CERTIFY THAT THERE ARE NO EXISTING FACILITIES WITHIN THE DEPICTED EASEMENT/RIGHT OF WAY AND FURTHER CERTIFY AS AGENT FOR THEIR RESPECTIVE UTILITY, ALL RIGHTS AND EASEMENTS CURRENTLY EXISTING WITHIN SAID EASEMENT/RIGHT OF WAY ARE HEREBY RELINQUISHED AND VACATED.

NICOR:
THIS _____ DAY OF _____ A.D. 2024.

SIGNATURE

PRINTED NAME AND TITLE

WITNESS

AT&T:
THIS _____ DAY OF _____ A.D. 2024.

SIGNATURE

PRINTED NAME AND TITLE

WITNESS

COMMONWEALTH EDISON:
THIS _____ DAY OF _____ A.D. 2024.

SIGNATURE

PRINTED NAME AND TITLE

WITNESS

COMCAST:
THIS _____ DAY OF _____ A.D. 2024.

SIGNATURE

PRINTED NAME AND TITLE

WITNESS

CITY CLERK'S CERTIFICATE

STATE OF ILLINOIS)
)SS
COUNTY OF KANE)

THIS IS TO CERTIFY THAT THE ABOVE PLAT CORRECTLY REPRESENTS THE VACATION DEPICTED HEREON, AND HAS BEEN ACCEPTED BY

ORDINANCE NUMBER _____ A PROPER ORDINANCE ADOPTED BY THE AURORA CITY COUNCIL

ON _____ 2024.

JENNIFER STALLINGS, CITY CLERK

WILL COUNTY CLERK'S CERTIFICATE

STATE OF ILLINOIS)
)SS
COUNTY OF WILL)

I, THE UNDERSIGNED, AS COUNTY CLERK OF WILL COUNTY, ILLINOIS, DO HEREBY CERTIFY THAT THERE ARE NO DELINQUENT GENERAL TAXES, NO UNPAID OR FORFEITED TAXES, AND NO REDEEMABLE TAX SALES AGAINST ANY OF THE LAND DEPICTED HEREON. I FURTHER CERTIFY THAT I HAVE RECEIVED ALL STATUTORY FEES IN CONNECTION WITH THE PLAT DEPICTED HEREON.

GIVEN UNDER MY HAND AND SEAL OF THE COUNTY CLERK AT _____ ILLINOIS, THIS _____ DAY OF _____, A.D., 2024.

COUNTY CLERK

PLEASE TYPE/PRINT NAME

WILL COUNTY RECORDER'S CERTIFICATE

STATE OF ILLINOIS)
)SS
COUNTY OF WILL)

I, THE UNDERSIGNED, AS THE RECORDER OF DEEDS FOR WILL COUNTY DO HEREBY CERTIFY THAT INSTRUMENT NUMBER _____ WAS FILED FOR RECORD IN THE RECORDER'S OFFICE OF WILL COUNTY, ILLINOIS, ON THE

_____ DAY OF _____, A.D., 2024 AT _____ O'CLOCK _____ M.

RECORDER OF DEEDS

PLEASE TYPE/PRINT NAME

CITY ENGINEER'S CERTIFICATE

STATE OF ILLINOIS)
)SS
COUNTY OF KANE)

I, THE UNDERSIGNED, AS CITY ENGINEER OF THE CITY OF AURORA, IN KANE, DUPAGE, KENDALL, AND WILL COUNTIES, ILLINOIS, DO HEREBY CERTIFY THAT THIS DOCUMENT IS APPROVED UNDER MY OFFICE

THIS _____ DAY OF _____, A.D., 2024.

KEN SCHROTH, CITY ENGINEER

CITY COUNCIL CERTIFICATE

STATE OF ILLINOIS)
)SS
COUNTY OF KANE)

APPROVED THIS _____ DAY OF _____, A.D., 2024 BY THE CITY COUNCIL OF THE CITY OF AURORA, PURSUANT TO ORDINANCE/RESOLUTION NUMBER _____

BY: _____
RICHARD C. IRVIN, MAYOR

ATTEST: _____
JENNIFER STALLINGS, CITY CLERK

VACATION LEGAL DESCRIPTIONS

STORMWATER CONTROL EASEMENT – PARCEL 1:

THAT PART OF THE EAST HALF OF SECTION 18, TOWNSHIP 37 NORTH, RANGE 9 EAST OF THE THIRD PRINCIPAL MERIDIAN, IN THE CITY OF AURORA, COUNTY OF WILL, STATE OF ILLINOIS, BEING MORE PARTICULARLY DESCRIBED AS FOLLOWS:

BEGINNING AT THE SOUTHWEST CORNER OF LOT 566 IN LINCOLN PRAIRIE BY DEL WEBB – PHASE 2A, RECORDED AS DOCUMENT NUMBER R2023047268; THENCE NORTH 27 DEGREES 23 MINUTES 02 SECONDS WEST, ALONG THE WEST LINE OF SAID LOT 566, A DISTANCE OF 589.70 FEET; THENCE NORTH 67 DEGREES 56 MINUTES 33 SECONDS EAST, A DISTANCE OF 272.92 FEET; THENCE NORTH 22 DEGREES 03 MINUTES 27 SECONDS WEST, A DISTANCE OF 210.75 FEET; THENCE NORTH 70 DEGREES 18 MINUTES 27 SECONDS EAST, A DISTANCE OF 301.74 FEET TO THE EASTERLY LINE OF SAID LOT 566; THENCE ALONG SAID EASTERLY LINE FOR THE NEXT FOUR (4) COURSES: (1) THENCE SOUTH 04 DEGREES 28 MINUTES 42 SECONDS EAST, A DISTANCE OF 334.83 FEET; (2) THENCE SOUTH 06 DEGREES 40 MINUTES 41 SECONDS EAST, A DISTANCE OF 86.02 FEET; (3) THENCE SOUTH 20 DEGREES 50 MINUTES 06 SECONDS EAST, A DISTANCE OF 80.94 FEET; (4) THENCE SOUTH 27 DEGREES 15 MINUTES 57 SECONDS EAST, A DISTANCE OF 185.59 FEET TO A POINT ON A NON-TANGENT CURVE AND THE NORTH LINE OF LOT 566 IN SAID LINCOLN PRAIRIE BY DEL WEBB PHASE 2A; THENCE ALONG SAID NORTH LINE FOR THE NEXT FOUR (4) COURSES: (1) THENCE WESTERLY, ALONG A CURVE, CONCAVE TO THE NORTH, HAVING A RADIUS OF 734.19 FEET, AN ARC DISTANCE OF 92.25 FEET, A CHORD BEARING SOUTH 72 DEGREES 40 MINUTES 48 SECONDS WEST, AND A CHORD DISTANCE OF 92.19 FEET TO A POINT OF NON-TANGENT COMPOUND CURVATURE, (2) THENCE SOUTHWESTERLY, ALONG A CURVE, CONCAVE TO THE SOUTHWEST, HAVING A RADIUS OF 300.00 FEET, AN ARC DISTANCE OF 256.86 FEET, A CHORD BEARING SOUTH 52 DEGREES 04 MINUTES 31 SECONDS WEST, AND A CHORD DISTANCE OF 249.09 FEET TO A POINT OF REVERSE CURVATURE, (3) THENCE SOUTHWESTERLY, ALONG A CURVE, CONCAVE TO THE NORTHWEST, HAVING A RADIUS OF 600.00 FEET, AN ARC DISTANCE OF 96.87 FEET, A CHORD BEARING SOUTH 32 DEGREES 10 MINUTES 18 SECONDS WEST, AND A CHORD DISTANCE OF 96.76 FEET TO A POINT OF TANGENCY; (4) THENCE SOUTH 36 DEGREES 47 MINUTES 48 SECONDS WEST, A DISTANCE OF 1.00 FEET TO THE POINT OF BEGINNING.

STORMWATER CONTROL EASEMENT – PARCEL 2:

PART OF THE EAST HALF OF SECTION 18, TOWNSHIP 37 NORTH, RANGE 9, EAST OF THE THIRD PRINCIPAL MERIDIAN, IN WILL COUNTY, ILLINOIS, DESCRIBED AS FOLLOWS: COMMENCING AT THE NORTHEAST CORNER OF THE SOUTHEAST QUARTER OF SAID SECTION 18, THENCE SOUTH 01 DEGREES 20 MINUTES 40 SECONDS EAST, ALONG THE EAST LINE OF SAID SOUTHEAST QUARTER, A DISTANCE OF 1031.96 FEET TO THE POINT OF BEGINNING;

THENCE SOUTH 01 DEGREES 20 MINUTES 40 SECONDS EAST, ALONG SAID EAST LINE, A DISTANCE OF 150.00 FEET; THENCE SOUTH 88 DEGREES 39 MINUTES 20 SECONDS WEST, A DISTANCE OF 885.00 FEET; THENCE NORTH 26 DEGREES 45 MINUTES 46 SECONDS WEST, A DISTANCE OF 1201.19 FEET TO A POINT ON A NON-TANGENT CURVE; THENCE NORTHEASTERLY, ALONG A CURVE, CONCAVE TO THE SOUTHEAST, HAVING A RADIUS OF 440.00 FEET, AN ARC DISTANCE OF 146.72 FEET, A CHORD BEARING NORTH 55 DEGREES 49 MINUTES 36 SECONDS EAST, AND A CHORD DISTANCE OF 146.04 FEET TO A POINT OF COMPOUND CURVATURE; THENCE NORTHEASTERLY, ALONG A CURVE, CONCAVE TO THE NORTHWEST, HAVING A RADIUS OF 300.00 FEET, AN ARC DISTANCE OF 119.05 FEET, A CHORD BEARING NORTH 54 DEGREES 00 MINUTES 39 SECONDS EAST, AND A CHORD DISTANCE OF 118.27 FEET TO A POINT OF NON-TANGENCY; THENCE NORTH 59 DEGREES 15 MINUTES 12 SECONDS EAST, A DISTANCE OF 203.56 FEET TO A POINT OF CURVATURE; THENCE SOUTHEASTERLY, ALONG A CURVE, CONCAVE TO THE EAST, HAVING A RADIUS OF 200.00 FEET, AN ARC DISTANCE OF 209.64 FEET, A CHORD BEARING SOUTH 60 DEGREES 41 MINUTES 17 SECONDS EAST, AND A CHORD DISTANCE OF 173.31 FEET TO A POINT OF TANGENCY; THENCE SOUTH 00 DEGREES 37 MINUTES 46 SECONDS EAST, A DISTANCE OF 202.56 FEET TO A POINT OF CURVATURE; THENCE SOUTHERLY, ALONG A CURVE, CONCAVE TO THE NORTHEAST, HAVING A RADIUS OF 200.00 FEET, AN ARC DISTANCE OF 140.90 FEET, A CHORD BEARING SOUTH 20 DEGREES 48 MINUTES 45 SECONDS EAST, AND A CHORD DISTANCE OF 138.01 FEET TO A POINT OF TANGENCY; THENCE SOUTH 40 DEGREES 59 MINUTES 43 SECONDS EAST, A DISTANCE OF 224.95 FEET TO A POINT OF CURVATURE; THENCE SOUTHEASTERLY, ALONG A CURVE, CONCAVE TO THE NORTHEAST, HAVING A RADIUS OF 200.00 FEET, AN ARC DISTANCE OF 65.13 FEET, A CHORD BEARING SOUTH 50 DEGREES 19 MINUTES 29 SECONDS EAST, AND A CHORD DISTANCE OF 64.84 FEET TO A POINT OF TANGENCY; THENCE SOUTH 59 DEGREES 39 MINUTES 15 SECONDS EAST, A DISTANCE OF 66.98 FEET TO A POINT OF CURVATURE; THENCE EASTERLY, ALONG A CURVE, CONCAVE TO THE NORTH, HAVING A RADIUS OF 200.00 FEET, AN ARC DISTANCE OF 110.62 FEET, A CHORD BEARING SOUTH 75 DEGREES 29 MINUTES 57 SECONDS EAST, AND A CHORD DISTANCE OF 109.22 FEET TO A POINT OF TANGENCY; THENCE NORTH 88 DEGREES 39 MINUTES 20 SECONDS EAST, A DISTANCE OF 421.65 FEET; THENCE SOUTH 01 DEGREES 20 MINUTES 40 SECONDS EAST, A DISTANCE OF 479.46 FEET; THENCE NORTH 88 DEGREES 39 MINUTES 20 SECONDS EAST, A DISTANCE OF 34.50 FEET TO THE POINT OF BEGINNING.

STORMWATER CONTROL EASEMENT – PARCEL 3:

PART OF THE NORTHWEST QUARTER OF SECTION 17, TOWNSHIP 37 NORTH, RANGE 9, EAST OF THE THIRD PRINCIPAL MERIDIAN, IN WILL COUNTY, ILLINOIS, DESCRIBED AS FOLLOWS:

COMMENCING AT THE SOUTHWEST CORNER OF SAID NORTHWEST QUARTER; THENCE NORTH 01 DEGREES 20 MINUTES 40 SECONDS WEST, A DISTANCE OF 144.00 FEET; THENCE NORTH 88 DEGREES 39 MINUTES 20 SECONDS EAST, A DISTANCE OF 146.86 FEET TO A POINT OF CURVATURE; THENCE NORTHEASTERLY, ALONG A CURVE, CONCAVE TO THE NORTHWEST, HAVING A RADIUS OF 208.00 FEET, AN ARC DISTANCE OF 282.07 FEET, A CHORD BEARING NORTH 52 DEGREES 33 MINUTES 39 SECONDS EAST, AND A CHORD DISTANCE OF 245.07 FEET TO A POINT OF TANGENCY; THENCE NORTH 16 DEGREES 27 MINUTES 58 SECONDS EAST, A DISTANCE OF 228.60 FEET; THENCE SOUTH 73 DEGREES 32 MINUTES 02 SECONDS EAST, A DISTANCE OF 32.55 FEET TO A POINT OF CURVATURE; THENCE EASTERLY, ALONG A CURVE, CONCAVE TO THE NORTH, HAVING A RADIUS OF 490.00 FEET, AN ARC DISTANCE OF 597.91 FEET, A CHORD BEARING NORTH 71 DEGREES 30 MINUTES 34 SECONDS EAST, AND A CHORD DISTANCE OF 561.50 FEET TO THE POINT OF BEGINNING;

THENCE NORTHEASTERLY, CONTINUING ALONG A CURVE, CONCAVE TO THE NORTHWEST, HAVING A RADIUS OF 490.00 FEET, AN ARC DISTANCE OF 50.00 FEET, A CHORD BEARING NORTH 33 DEGREES 37 MINUTES 46 SECONDS EAST, AND A CHORD DISTANCE OF 49.98 FEET TO A POINT OF NON-TANGENCY; THENCE SOUTH 86 DEGREES 01 MINUTES 12 SECONDS EAST, A DISTANCE OF 228.65 FEET; THENCE SOUTH 69 DEGREES 27 MINUTES 57 SECONDS EAST, A DISTANCE OF 65.66 FEET; THENCE SOUTH 81 DEGREES 52 MINUTES 21 SECONDS EAST, A DISTANCE OF 65.74 FEET; THENCE NORTH 88 DEGREES 38 MINUTES 52 SECONDS EAST, A DISTANCE OF 317.46 FEET; THENCE SOUTH 75 DEGREES 57 MINUTES 07 SECONDS EAST, A DISTANCE OF 57.82 FEET; THENCE SOUTH 11 DEGREES 37 MINUTES 27 SECONDS WEST, A DISTANCE OF 180.00 FEET; THENCE SOUTH 20 DEGREES 28 MINUTES 22 SECONDS WEST, A DISTANCE OF 33.93 FEET; THENCE SOUTH 57 DEGREES 17 MINUTES 10 SECONDS WEST, A DISTANCE OF 29.68 FEET; THENCE SOUTH 86 DEGREES 56 MINUTES 18 SECONDS WEST, A DISTANCE OF 102.46 FEET; THENCE SOUTH 88 DEGREES 31 DEGREES 27 SECONDS WEST, A DISTANCE OF 720.00 FEET; THENCE SOUTH 01 DEGREES 22 MINUTES 33 SECONDS EAST, A DISTANCE OF 120.00 FEET; THENCE SOUTH 88 DEGREES 37 MINUTES 27 SECONDS WEST, A DISTANCE OF 56.84 FEET TO A POINT OF CURVATURE; THENCE NORTHWESTERLY, ALONG A CURVE, CONCAVE TO THE NORTHEAST, HAVING A RADIUS OF 67.00 FEET, AN ARC DISTANCE OF 93.55 FEET, A CHORD BEARING NORTH 51 DEGREES 22 MINUTES 34 SECONDS WEST, AND A CHORD DISTANCE OF 86.13 FEET TO A POINT OF TANGENCY; THENCE NORTH 11 DEGREES 22 MINUTES 36 SECONDS WEST, A DISTANCE OF 96.28 FEET; THENCE NORTH 69 DEGREES 38 MINUTES 40 SECONDS EAST, A DISTANCE OF 102.46 FEET; THENCE NORTH 62 DEGREES 20 MINUTES 09 SECONDS EAST, A DISTANCE OF 79.02 FEET; THENCE NORTH 54 DEGREES 58 MINUTES 10 SECONDS EAST, A DISTANCE OF 79.02 FEET; THENCE NORTH 47 DEGREES 36 MINUTES 10 SECONDS EAST, A DISTANCE OF 79.02 FEET; THENCE NORTH 40 DEGREES 14 MINUTES 10 SECONDS EAST, A DISTANCE OF 79.02 FEET; THENCE NORTH 53 DEGREES 26 MINUTES 50 SECONDS WEST, A DISTANCE OF 125.00 FEET TO THE POINT OF BEGINNING.

VACATION LEGAL DESCRIPTIONS

CITY EASEMENT – PARCEL 4:

THAT PART OF THE EAST HALF OF SECTION 18, TOWNSHIP 37 NORTH, RANGE 9 EAST OF THE THIRD PRINCIPAL MERIDIAN, IN THE CITY OF AURORA, COUNTY OF WILL, STATE OF ILLINOIS, BEING MORE PARTICULARLY DESCRIBED AS FOLLOWS:

COMMENCING AT THE NORTHEAST CORNER OF THE SOUTHEAST QUARTER OF SAID SECTION 18; THENCE SOUTH 88 DEGREES 43 MINUTES 16 SECONDS WEST, ALONG THE NORTH LINE OF SAID SOUTHEAST QUARTER, A DISTANCE OF 1245.36 FEET; THENCE NORTH 30 DEGREES 33 MINUTES 02 SECONDS WEST, A DISTANCE OF 141.30 FEET TO A POINT ON A NON-TANGENT CURVE; THENCE NORTHEASTERLY, ALONG A CURVE, CONCAVE TO THE SOUTHEAST, HAVING A RADIUS OF 290.00 FEET, AN ARC DISTANCE OF 178.40 FEET, A CHORD BEARING NORTH 60 DEGREES 36 MINUTES 45 SECONDS EAST, AND A CHORD DISTANCE OF 175.60 FEET TO A POINT OF NON-TANGENT COMPOUND CURVATURE; THENCE EASTERLY, ALONG A CURVE, CONCAVE TO THE NORTH, HAVING A RADIUS OF 280.00 FEET, AN ARC DISTANCE OF 44.23 FEET, A CHORD BEARING NORTH 73 DEGREES 42 MINUTES 39 SECONDS EAST, AND A CHORD DISTANCE OF 44.16 FEET TO A POINT OF NON-TANGENCY; THENCE NORTH 27 DEGREES 15 MINUTES 57 SECONDS WEST, A DISTANCE OF 188.31 FEET; THENCE NORTH 20 DEGREES 50 MINUTES 06 SECONDS WEST, A DISTANCE OF 80.94 FEET; THENCE NORTH 06 DEGREES 40 MINUTES 41 SECONDS WEST, A DISTANCE OF 86.02 FEET; THENCE NORTH 04 DEGREES 28 MINUTES 42 SECONDS WEST, A DISTANCE OF 738.83 FEET; THENCE NORTH 15 DEGREES 42 MINUTES 01 SECONDS WEST, A DISTANCE OF 57.22 FEET; THENCE NORTH 31 DEGREES 37 MINUTES 54 SECONDS WEST, A DISTANCE OF 64.77 FEET; THENCE NORTH 57 DEGREES 48 MINUTES 54 SECONDS EAST, A DISTANCE OF 186.00 FEET; THENCE NORTH 32 DEGREES 11 MINUTES 06 SECONDS WEST, A DISTANCE OF 30.67 FEET; THENCE NORTH 57 DEGREES 48 MINUTES 54 SECONDS EAST, A DISTANCE OF 123.00 FEET TO THE POINT OF BEGINNING;

THENCE NORTH 32 DEGREES 11 MINUTES 06 SECONDS WEST, A DISTANCE OF 66.00 FEET; THENCE NORTH 57 DEGREES 48 MINUTES 54 SECONDS EAST, A DISTANCE OF 57.00 FEET TO A POINT OF CURVATURE; THENCE EASTERLY, ALONG A CURVE, CONCAVE TO THE SOUTH, HAVING A RADIUS OF 133.00 FEET, AN ARC DISTANCE OF 208.92 FEET, A CHORD BEARING SOUTH 77 DEGREES 11 MINUTES 06 SECONDS EAST, AND A CHORD DISTANCE OF 188.09 FEET TO A POINT OF TANGENCY; THENCE SOUTH 52 DEGREES 11 MINUTES 06 SECONDS EAST, A DISTANCE OF 64.00 FEET; THENCE SOUTH 57 DEGREES 48 MINUTES 54 SECONDS WEST, A DISTANCE OF 66.00 FEET; THENCE NORTH 32 DEGREES 11 MINUTES 06 SECONDS WEST, A DISTANCE OF 64.00 FEET TO A POINT OF CURVATURE; THENCE WESTERLY, ALONG A CURVE, CONCAVE TO THE SOUTH, HAVING A RADIUS OF 67.00 FEET, AN ARC DISTANCE OF 105.24 FEET, A CHORD BEARING NORTH 77 DEGREES 11 MINUTES 06 SECONDS WEST, AND A CHORD DISTANCE OF 94.75 FEET TO THE POINT OF TANGENCY; THENCE SOUTH 57 DEGREES 48 MINUTES 54 SECONDS WEST, A DISTANCE OF 57.00 FEET TO THE POINT OF BEGINNING.

CITY EASEMENT – PARCEL 5:

THAT PART OF THE EAST HALF OF SECTION 18, TOWNSHIP 37 NORTH, RANGE 9 EAST OF THE THIRD PRINCIPAL MERIDIAN, IN THE CITY OF AURORA, COUNTY OF WILL, STATE OF ILLINOIS, BEING MORE PARTICULARLY DESCRIBED AS FOLLOWS:

COMMENCING AT THE NORTHEAST CORNER OF THE SOUTHEAST QUARTER OF SAID SECTION 18; THENCE SOUTH 01 DEGREES 20 MINUTES 40 SECONDS EAST, A DISTANCE OF 1181.96 FEET; THENCE SOUTH 88 DEGREES 39 MINUTES 20 SECONDS WEST, A DISTANCE OF 34.50 FEET TO THE POINT OF BEGINNING;

THENCE SOUTH 88 DEGREES 39 MINUTES 20 SECONDS WEST, A DISTANCE OF 20.00 FEET; THENCE NORTH 01 DEGREES 20 MINUTES 40 SECONDS WEST, A DISTANCE OF 629.46 FEET; THENCE SOUTH 88 DEGREES 39 MINUTES 20 SECONDS WEST, A DISTANCE OF 324.97 FEET; THENCE NORTH 01 DEGREES 20 MINUTES 40 SECONDS WEST, A DISTANCE OF 224.50 FEET; THENCE NORTH 00 DEGREES 55 MINUTES 23 SECONDS EAST, A DISTANCE OF 478.48 FEET TO A POINT ON A NON-TANGENT CURVE; THENCE NORTHWESTERLY, ALONG A CURVE, CONCAVE TO THE NORTHEAST, HAVING A RADIUS OF 393.00 FEET, AN ARC DISTANCE OF 196.85 FEET, A CHORD BEARING NORTH 60 DEGREES 31 MINUTES 59 SECONDS WEST, AND A CHORD DISTANCE OF 194.80 FEET TO A POINT OF TANGENCY; THENCE NORTH 46 DEGREES 11 MINUTES 00 SECONDS WEST, A DISTANCE OF 264.15 FEET; THENCE NORTH 23 DEGREES 40 MINUTES 32 SECONDS EAST, A DISTANCE OF 118.00 FEET; THENCE NORTH 45 DEGREES 43 MINUTES 11 SECONDS WEST, A DISTANCE OF 10.10 FEET; THENCE NORTH 36 DEGREES 04 MINUTES 09 SECONDS EAST, A DISTANCE OF 77.89 FEET; THENCE NORTH 19 DEGREES 39 MINUTES 36 SECONDS EAST, A DISTANCE OF 77.89 FEET; THENCE SOUTH 78 DEGREES 32 MINUTES 40 SECONDS EAST, A DISTANCE OF 44.54 FEET TO A POINT ON A NON-TANGENT CURVE; THENCE SOUTHWESTERLY, ALONG A CURVE, CONCAVE TO THE NORTHWEST, HAVING A RADIUS OF 460.00 FEET, AN ARC DISTANCE OF 252.43 FEET, A CHORD BEARING SOUTH 28 DEGREES 05 MINUTES 44 SECONDS WEST, AND A CHORD DISTANCE OF 249.28 FEET TO A POINT OF NON-TANGENCY; THENCE SOUTH 46 DEGREES 11 MINUTES 00 SECONDS EAST, A DISTANCE OF 252.09 FEET TO A POINT OF CURVATURE; THENCE SOUTHEASTERLY, ALONG A CURVE, CONCAVE TO THE NORTHEAST, HAVING A RADIUS OF 350.00 FEET, AN ARC DISTANCE OF 185.03 FEET, A CHORD BEARING SOUTH 61 DEGREES 19 MINUTES 43 SECONDS EAST, AND A CHORD DISTANCE OF 182.89 FEET TO A POINT OF NON-TANGENCY; THENCE SOUTH 00 DEGREES 55 MINUTES 23 SECONDS WEST, A DISTANCE OF 517.57 FEET; THENCE SOUTH 01 DEGREES 20 MINUTES 40 SECONDS EAST, A DISTANCE OF 204.10 FEET; THENCE NORTH 88 DEGREES 39 MINUTES 20 SECONDS EAST, A DISTANCE OF 324.97 FEET; THENCE SOUTH 01 DEGREES 20 MINUTES 40 SECONDS EAST, A DISTANCE OF 649.46 FEET TO THE POINT OF BEGINNING.

CITY EASEMENT – PARCEL 6:

LOT 566 IN LINCOLN PRAIRIE BY DEL WEBB – PHASE 2A, RECORDED AS DOCUMENT NUMBER R2023047268, BEING A SUBDIVISION OF PART OF SECTION 17 AND 18, TOWNSHIP 37 NORTH, RANGE 9, EAST OF THE THIRD PRINCIPAL MERIDIAN, IN WILL COUNTY, ILLINOIS.

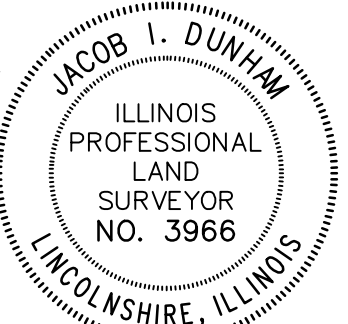
SURVEYOR'S CERTIFICATE

STATE OF ILLINOIS)
)SS
COUNTY OF LAKE)

THIS IS TO CERTIFY THAT I, THE UNDERSIGNED, AN ILLINOIS PROFESSIONAL LAND SURVEYOR, HAVE SURVEYED THE ABOVE-DESCRIBED PROPERTY, AND THAT THIS PLAT WAS PREPARED FOR THE PURPOSE OF VACATING SAID PROPERTY FOR PURPOSES STATED HEREON, AND THAT THIS PLAT OF VACATION ACCURATELY DEPICTS SAID PROPERTY.

GIVEN UNDER MY HAND AND SEAL THIS 20TH DAY OF SEPTEMBER, A.D. 2024.

JACOB I. DUNHAM
ILLINOIS PROFESSIONAL LAND SURVEYOR NO. 3966
LICENSE EXPIRES: NOVEMBER 30, 2024



DATE	REVISIONS	PER	CITY COMMENTS
09/20/24			

Manhard CONSULTING
PROFESSIONAL LAND SURVEYOR
1906 E GOLD ROAD, SUITE 100
PULAUILLI, ILLINOIS 60454
CONTACT: MATTHEW B. BROWN, P.E.
(815) 772-8273

LINCOLN PRAIRIE BY DEL WEBB
AURORA, ILLINOIS
PLAT OF VACATION

PROJ. MGR.: JID
PROJ. ASSOC.: PGA
DRAWN BY: PGA
DATE: 08/27/24
SCALE: NTS
SHEET 3 OF 3
PULAUILLI

September 20, 2024 - 14:45 Draw Name: C:\Pulauill\01\Draw\Drawings\Plat of Vacation\01-PULAUILLI.DWG P143.PLV, Drawn by: panterson