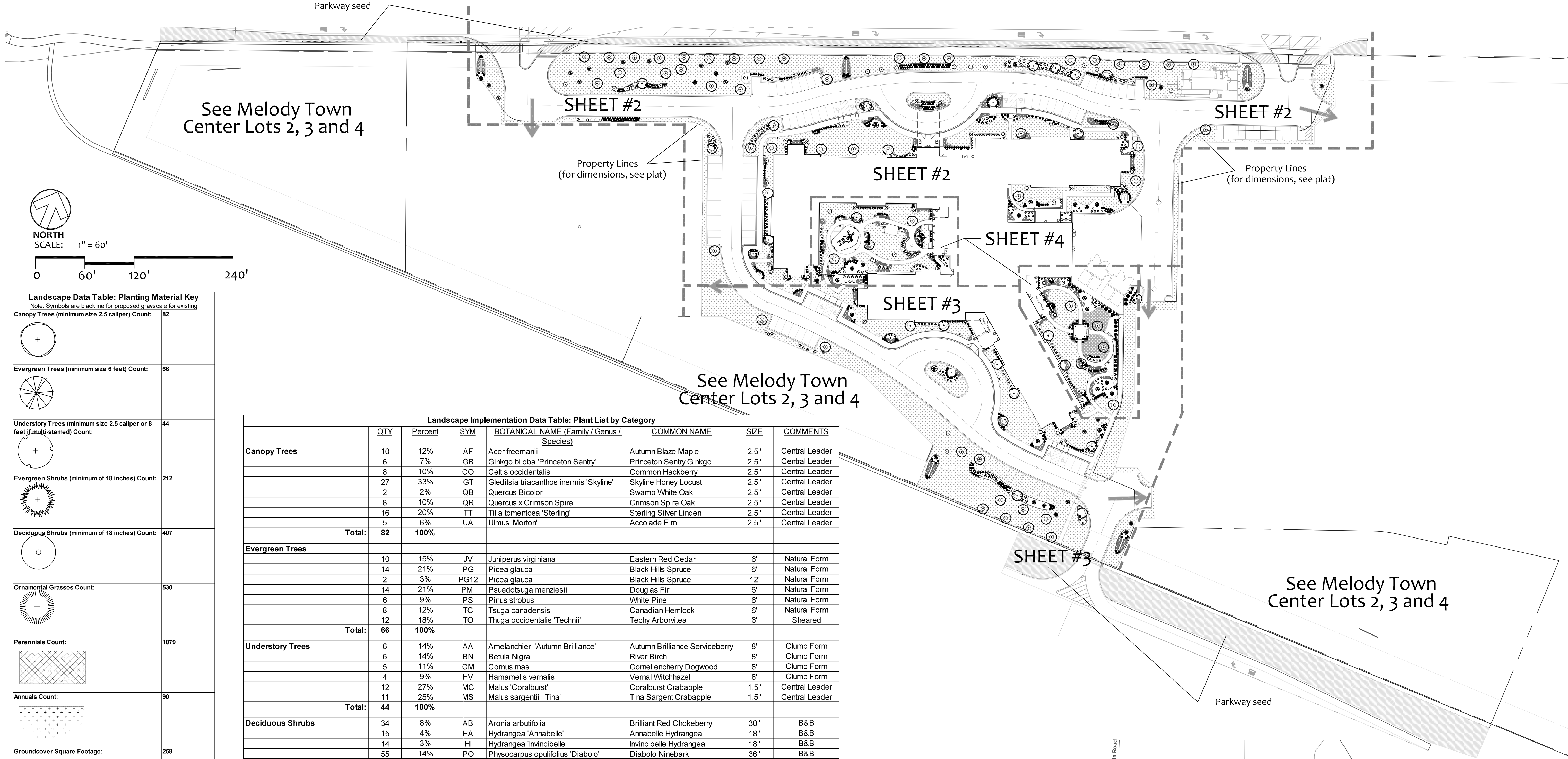


LANDSCAPE PLAN FOR LOT 1 OF  
MELODY TOWN CENTER

Landscape Data Table: CTEs Provided			
	CTE Value	Count Provided	Total CTEs Provided
Canopy Trees	1	82	82
Evergreen Trees	1/3	66	22
Understory Trees	1/3	44	15
Deciduous Shrubs	1/20	407	20
Evergreen Shrubs	1/20	212	11
Total:		811	150

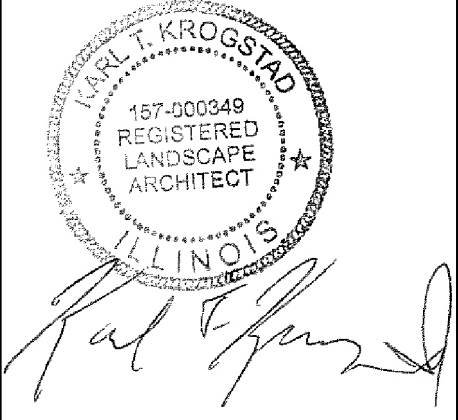


Landscape Data Table: Planting Material Key	
Note: Symbols are blackline for proposed grayscale for existing	
Canopy Trees (minimum size 2.5 caliper) Count:	82
Evergreen Trees (minimum size 6 feet) Count:	66
Understory Trees (minimum size 2.5 caliper or 8 feet if multi-stemmed) Count:	44
Evergreen Shrubs (minimum of 18 inches) Count:	212
Deciduous Shrubs (minimum of 18 inches) Count:	407
Ornamental Grasses Count:	530
Perennials Count:	1079
Annuals Count:	90
Groundcover Square Footage:	258
Turf (Seeded) Square Footage:	32234
Turf (Sod) Square Footage:	86850
Native Prairie Planting Square Footage:	0
Native Wetland Planting Square Footage:	0

Landscape Implementation Data Table: Plant List by Category							
	QTY	Percent	SYM	BOTANICAL NAME (Family / Genus / Species)	COMMON NAME	SIZE	COMMENTS
Canopy Trees	10	12%	AF	Acer freemanii	Autumn Blaze Maple	2.5"	Central Leader
	6	7%	GB	Ginkgo biloba 'Princeton Sentry'	Princeton Sentry Ginkgo	2.5"	Central Leader
	8	10%	CO	Celtis occidentalis	Common Hackberry	2.5"	Central Leader
	27	33%	GT	Gleditsia triacanthos inermis 'Skyline'	Skyline Honey Locust	2.5"	Central Leader
	2	2%	QB	Quercus Bicolor	Swamp White Oak	2.5"	Central Leader
	8	10%	QR	Quercus x Crimson Spire	Crimson Spire Oak	2.5"	Central Leader
	16	20%	TT	Tilia tomentosa 'Sterling'	Sterling Silver Linden	2.5"	Central Leader
	5	6%	UA	Ulmus 'Morton'	Accolade Elm	2.5"	Central Leader
Total:	82	100%					
Evergreen Trees	10	15%	JV	Juniperus virginiana	Eastern Red Cedar	6'	Natural Form
	14	21%	PG	Picea glauca	Black Hills Spruce	6'	Natural Form
	2	3%	PG12	Picea glauca	Black Hills Spruce	12'	Natural Form
	14	21%	PM	Pseudotsuga menziesii	Douglas Fir	6'	Natural Form
	6	9%	PS	Pinus strobus	White Pine	6'	Natural Form
	8	12%	TC	Tsuga canadensis	Canadian Hemlock	6'	Natural Form
	12	18%	TO	Thuja occidentalis 'Technii'	Techy Arborvitae	6'	Sheared
	66	100%					
Understory Trees	6	14%	AA	Amelanchier 'Autumn Brilliance'	Autumn Brilliance Serviceberry	8'	Clump Form
	6	14%	BN	Betula Nigra	River Birch	8'	Clump Form
	5	11%	CM	Cornus mas	Corneliencherry Dogwood	8'	Clump Form
	4	9%	HV	Hamamelis vernalis	Vernal Witchhazel	8'	Clump Form
	12	27%	MC	Malus 'Coralburst'	Coralburst Crabapple	1.5"	Central Leader
	11	25%	MS	Malus sargentii 'Tina'	Tina Sargent Crabapple	1.5"	Central Leader
	44	100%					
Deciduous Shrubs	34	8%	AB	Aronia arbutifolia	Brilliant Red Chokeberry	30"	B&B
	15	4%	HA	Hydrangea 'Annabelle'	Annabelle Hydrangea	18"	B&B
	14	3%	HI	Hydrangea 'Invincibelle'	Invincibelle Hydrangea	18"	B&B
	55	14%	PO	Physocarpus opulifolius 'Diabolo'	Diabolo Ninebark	36"	B&B
	34	8%	RA	Rhus Aromatica 'Gro-Low'	Gro-Low Sumac	18"	B&B
	91	22%	RI	Ribes alpinum 'Green Mound'	Green Mound Alpine Currant	18"	B&B
	22	5%	RK	Rosa 'Knockout'	Knockout Roses	18"	B&B
	48	12%	VD	Viburnum dentatum 'Blue Muffin'	Blue Muffin Viburnum	36"	B&B
Evergreen Shrubs	94	23%	WF	Weigela florida 'Midnight Wine'	Midnight Wine Weigela	18"	B&B
	407	100%					
Perennials / Ornamental Grasses	80	38%	JC	Juniperus chinensis 'Sea Green'	Sea Green Juniper	18"	wide
	132	62%	TM	Taxus media 'densiformis'	Dense Yew	18"	wide
Perennials / Ornamental Grasses	37	2%	AG	Andropogon gerardii	Red October Bid Bluestem	1 Gal.	
	88	5%	AV	Astilbe 'Visions in Pink'	Visions in Pink Astilbe	1 Gal.	
	164	10%	CK	Calamagrostis acutoflora 'Karl Foerster'	Karl Foerster Reed Grass	1 Gal.	
	204	12%	EP	Echinacea purpurea	Purple Coneflower	1 Gal.	
	131	8%	HC	Heuchera 'Caramel'	Caramel Coral Bells	1 Gal.	
	32	2%	HE	Hosta sieboldiana 'Elegans'	Elegans Hosta	1 Gal.	
	66	4%	HJ	Hosta 'June'	June Hosta	1 Gal.	
	72	4%	HM	Hakonechloa macra 'All Gold'	All Gold Hakone Grass	1 Gal.	
	148	9%	HS	Hemerocallis 'Stella de Oro'	Stella de Oro Daylilies	1 Gal.	
	179	11%	PH	Pennisetum alopecuroides 'Hamelin'	Dwarf Fountain Grass	1 Gal.	
	78	5%	PV	Panicum virgatum	Switch Grass	1 Gal.	
	198	12%	RD	Rugelbeckia 'Goldsturm'	Black-Eyed Susans	1 Gal.	
	258	15%	SG	Sedum spurium 'Dragons Blood'	Dragon's Blood Sedum	2.5" pots	
	21	1%	SN	Salvia nemerosa 'May Night'	May Night Salvia	1 Gal.	
	1676	100%					



**Cedarwood Development**  
3200 WEST MARKET ST.  
PAULAVN, OHIO 44333  
P: 330-356-8971  
F: 330-356-4451  
Ron D'Amico  
Director of Development  
(330) 714-9617



Karl T Krogstad  
Illinois Registered Landscape Architect  
License No. 157-000349 - Expires 08/31/2021

**KROGSTAD**  
LAND DESIGN LIMITED  
LANDSCAPE ARCHITECTURE • CONSULTING  
519 PEMERBROOK CT. N. CRYSTAL LAKE, IL 60014  
P: 815-239-1511  
KROGSTAD@LANDDESIGNLIMITED.COM

LANDSCAPE PLAN FOR LOT 1 OF  
MELODY TOWN CENTER  
AURORA, ILLINOIS

PROJECT # HEL1723

Date: 11/18/20

REVISIONS:  
Rev: 12/17/20  
Rev: 2/18/21  
Rev: 3/23/21

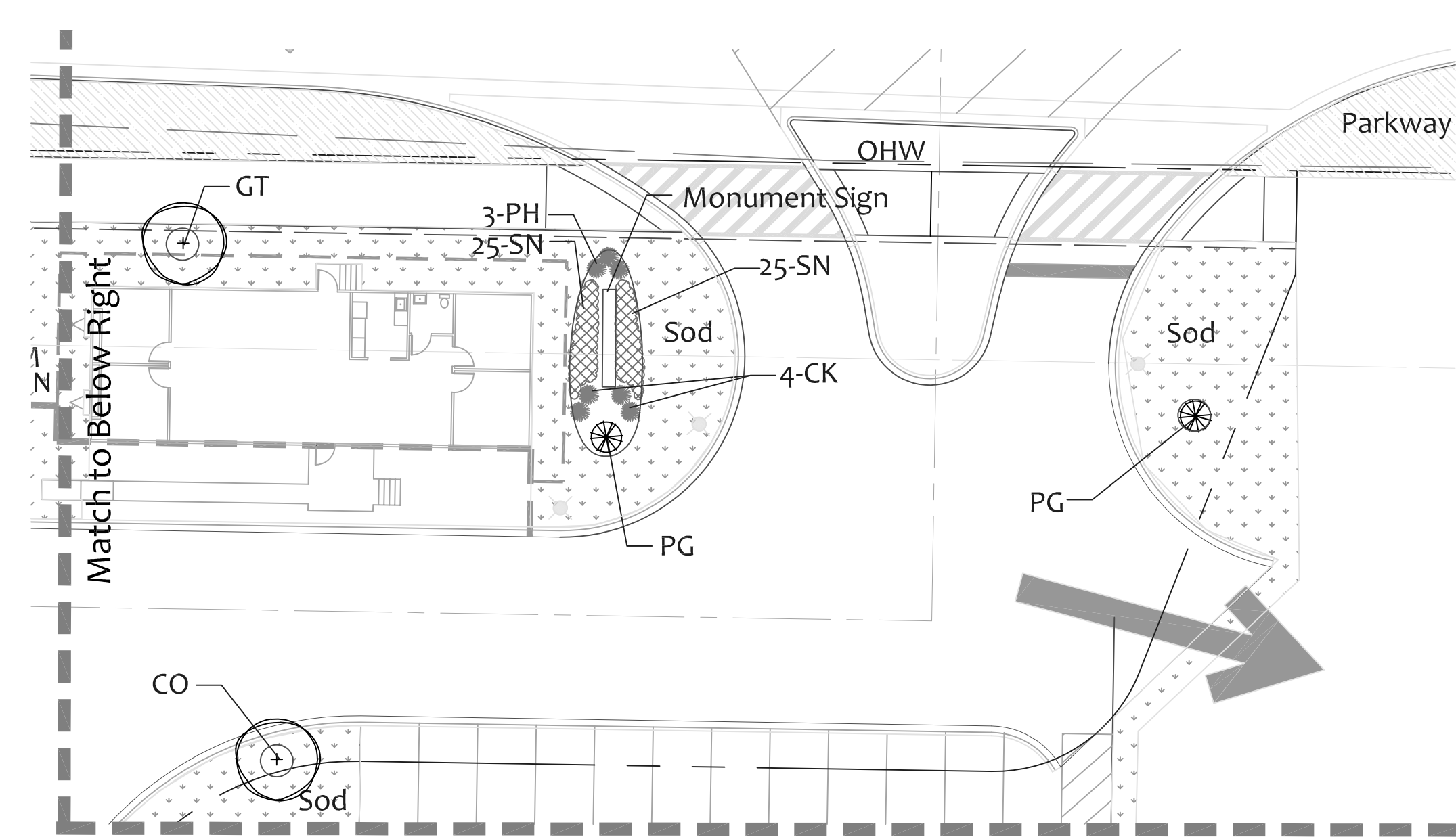
DRAWN KTK

CHECKED KTK

SHEET NO.

1 of 6







**Cedarwood  
Development**  
P: 330-836-9971  
F: 330-836-4591  
3200 WEST MARKET ST.  
FAIRLAWN, OHIO 44133

Ron DiNardo  
Director of Development  
(330) 714-6671  
(330) 714-6575

Laura Heiser  
VP of Senior Housing  
(330) 714-6671



*Karl T. Krogstad*

**Karl T Krogstad**  
Illinois Registered Landscape Architect  
License No. 157.000349 - Expires 08/31/2021

**KROGSTAD**  
LAND DESIGN LIMITED  
LANDSCAPE ARCHITECTURE \* CONSULTING  
519 PEMBERG RD. N., CRYSTAL LAKE, IL 60014  
P. 815-239-1551  
KROGSTAD@LANDESIGNLIMITED.COM

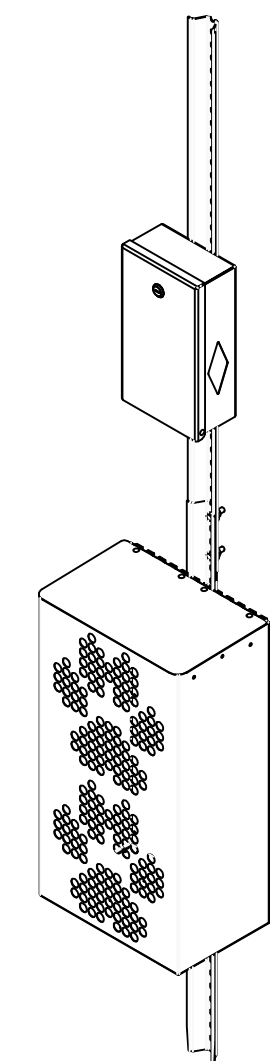
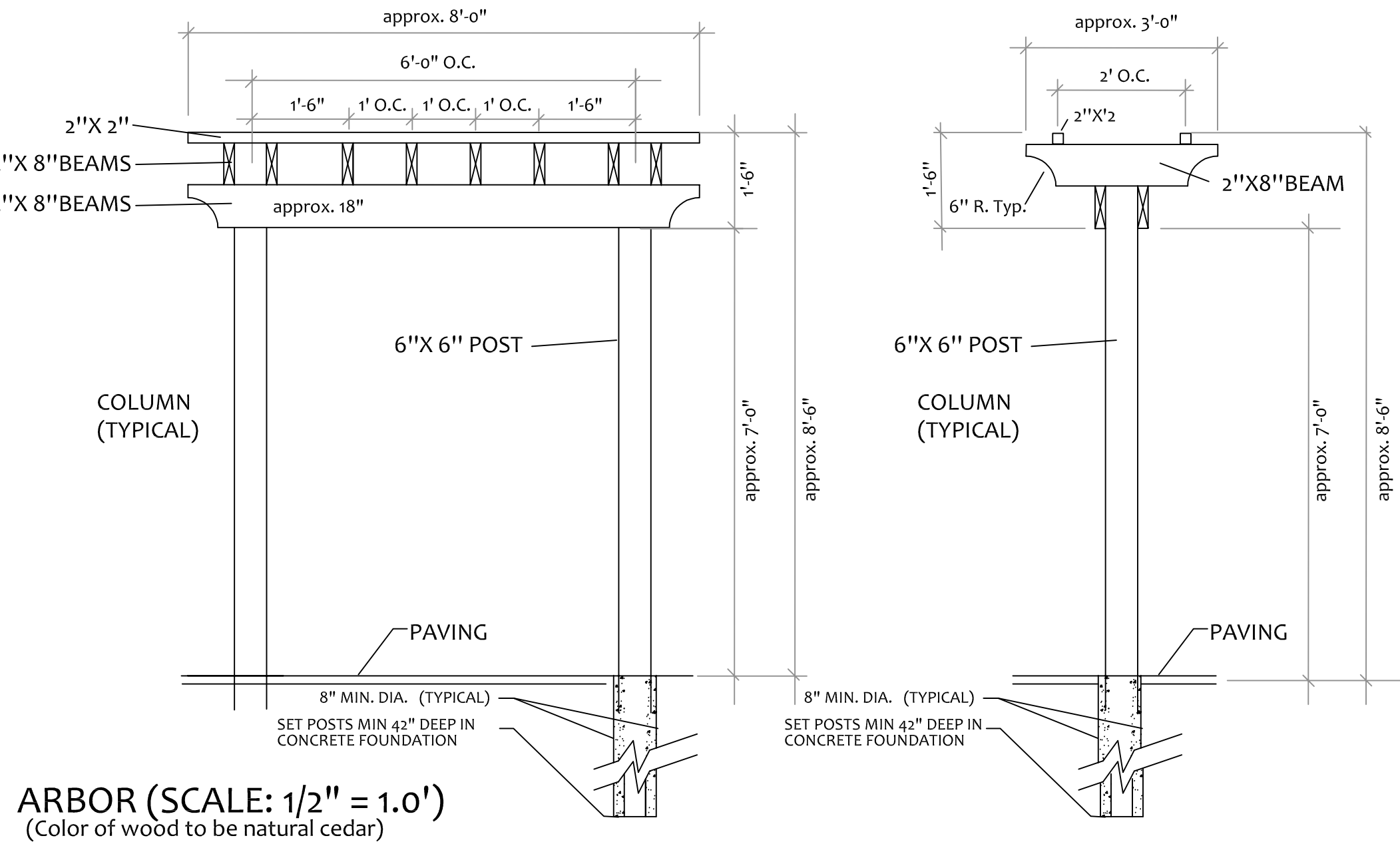
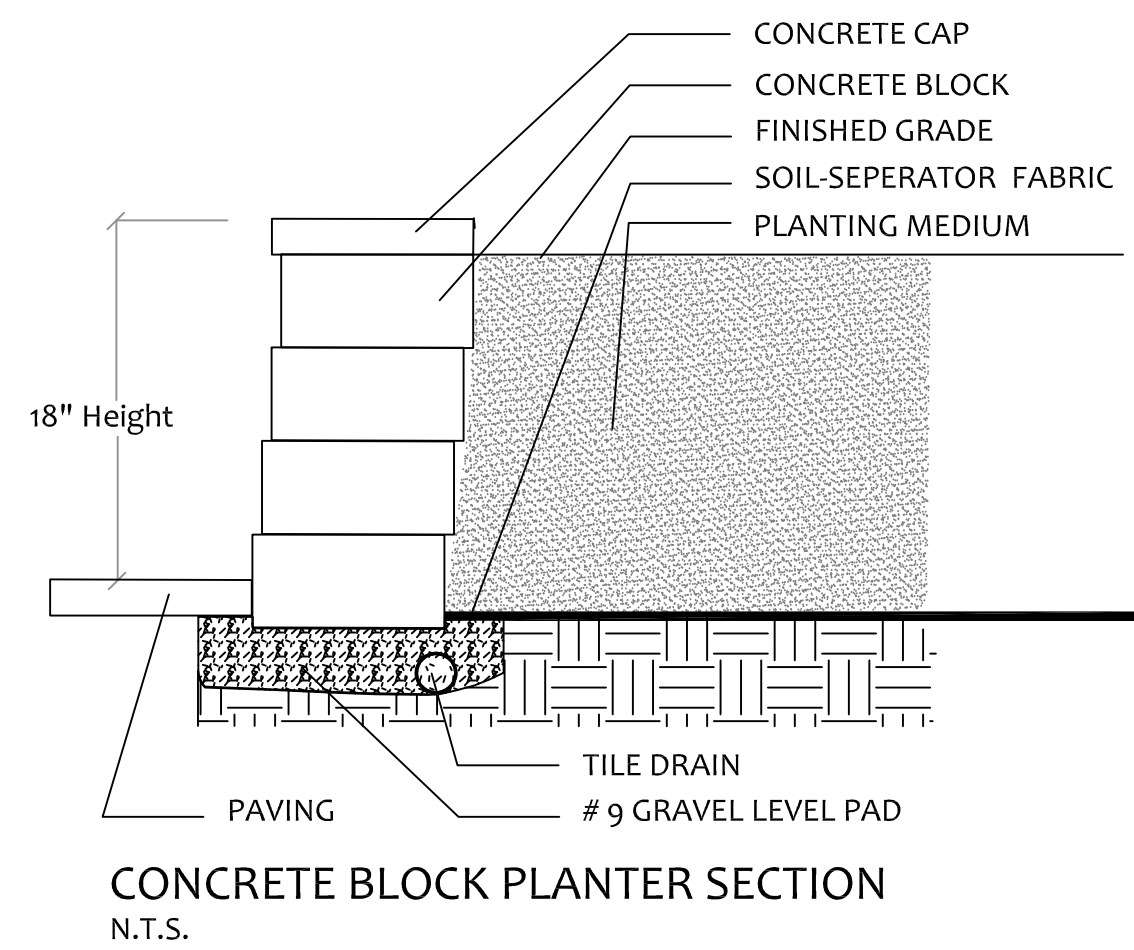
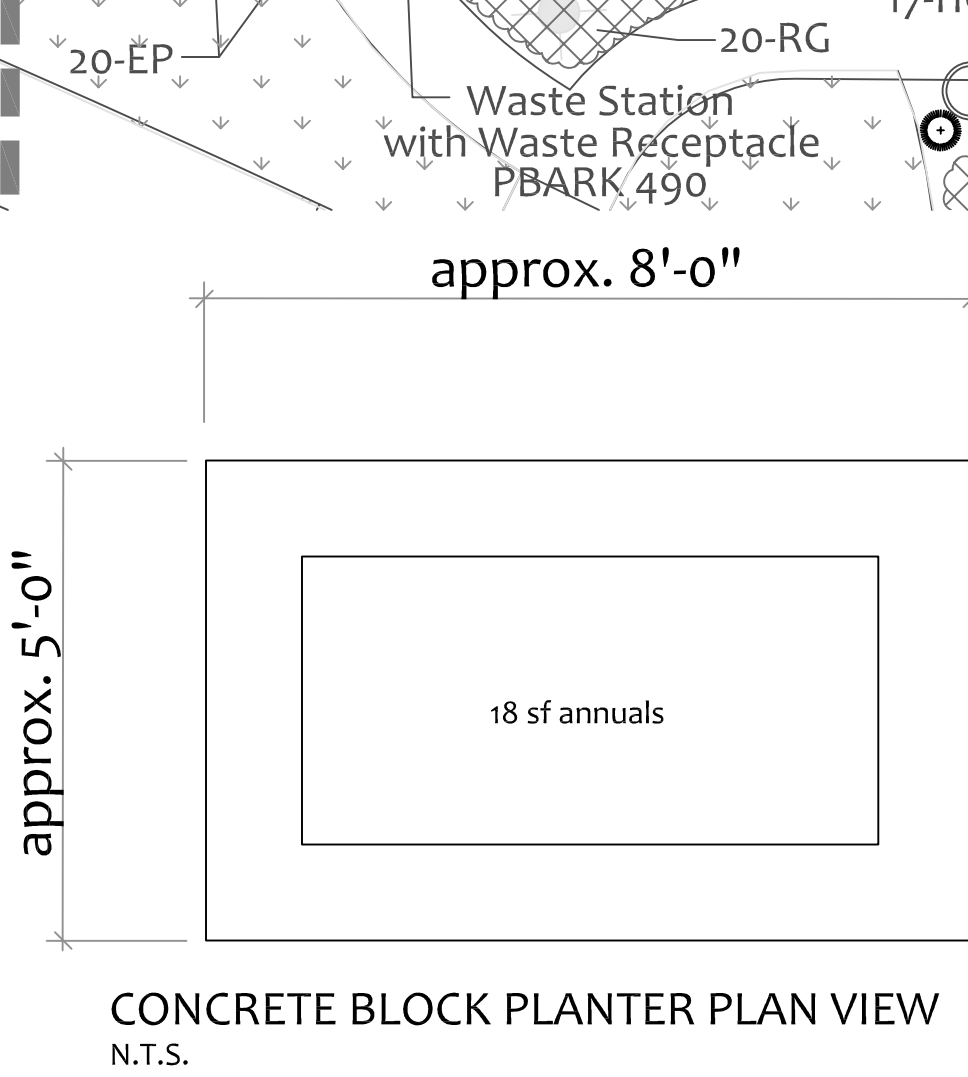
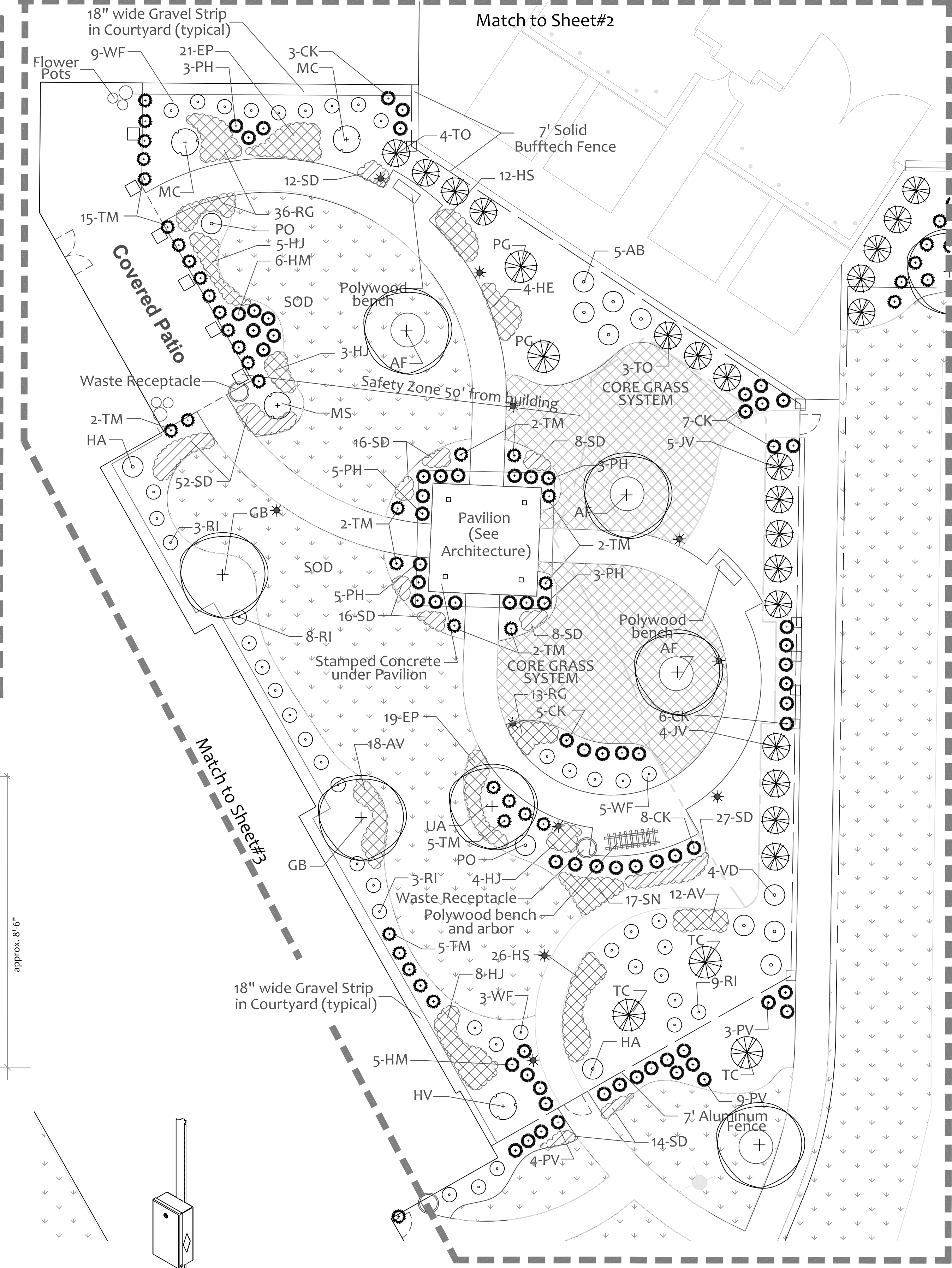
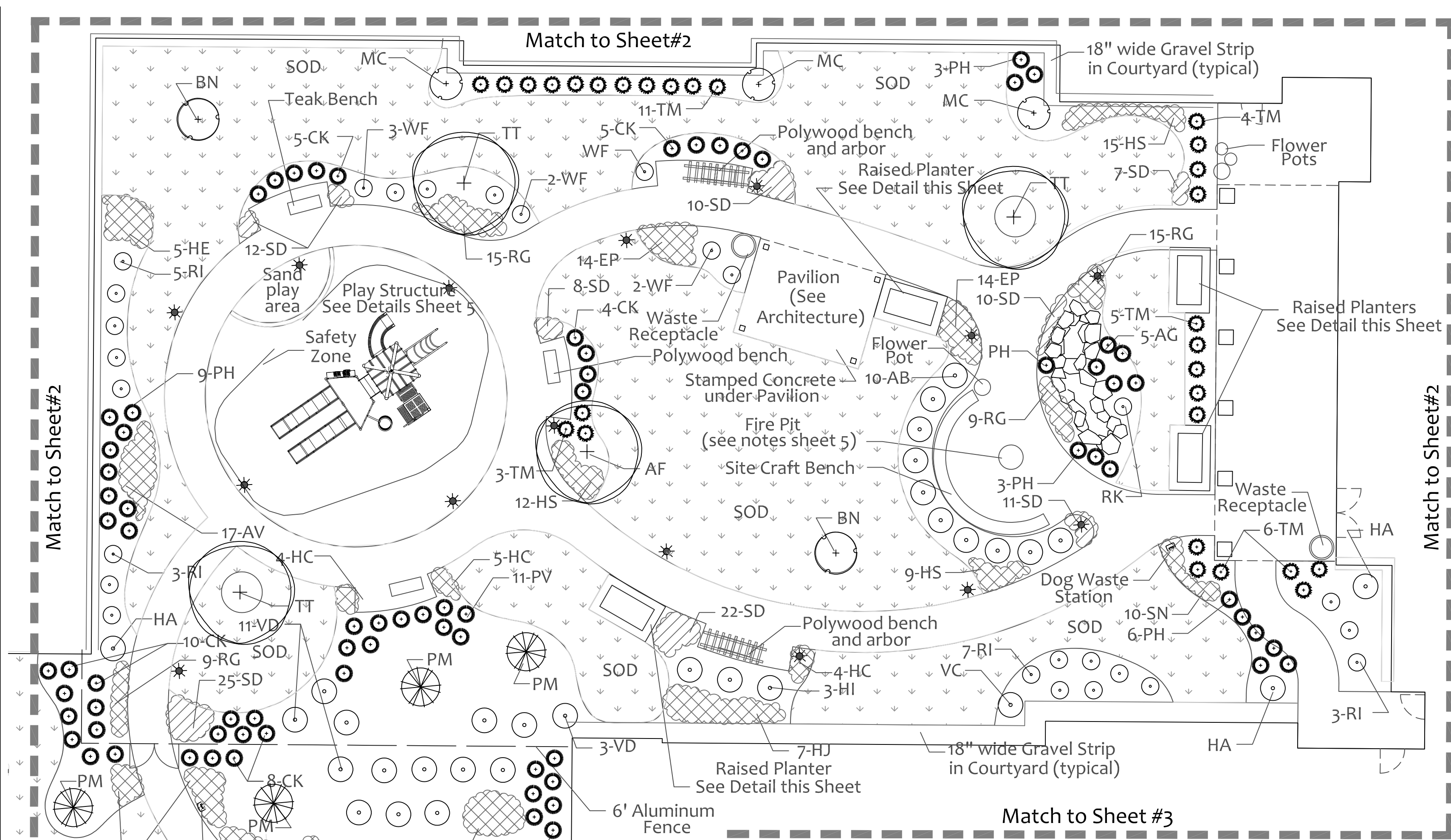
# LANDSCAPE PLAN FOR LOT 1 OF MELODY TOWN CENTER AURORA, ILLINOIS

PROJECT # HEL1723	
Date:	11/18/20
REVISIONS:	
Rev:	12/17/20
Rev:	2/18/21
Rev:	3/23/21
DRAWN	KTK
CHECKED	KTK
SHEET NO.	
2 of 6	









Concrete Block to be Unilock Olde Quarry, color to be either River or Prairie to be selected by owner to complement building colors. Concrete Cap to be Unilock LedgeStone Buff Color.

SCALE: 1" = 10'

0 10' 20' 40'

For plant material list, and notes, see sheet #1.



**Cedarwood Development**  
3200 WEST MARKET ST.  
FAIRLAWN, OHIO 44133  
P: 330-436-9871  
F: 330-436-4891  
Laura Heiler  
Landscape Architect  
(330) 714-9817



Karl T Krogstad  
Illinois Registered Landscape Architect  
License No. 157,000349 - Expires 08/31/2021

**KROGSTAD**  
LAND DESIGN LIMITED  
LANDSCAPE ARCHITECTURE • CONSULTING  
519 PEMBERG CT. N., CRYSTAL LAKE, IL 60014  
P: 815-339-1911  
KROGSTAD@LANDDESIGNLIMITED.COM

# LANDSCAPE PLAN FOR LOT 1 OF MELODY TOWN CENTER AURORA, ILLINOIS

PROJECT #	HEL1723
Date:	11/18/20
REVISIONS:	
Rev:	12/17/20
Rev:	2/18/21
Rev:	3/23/21

DRAWN KTK  
CHECKED KTK

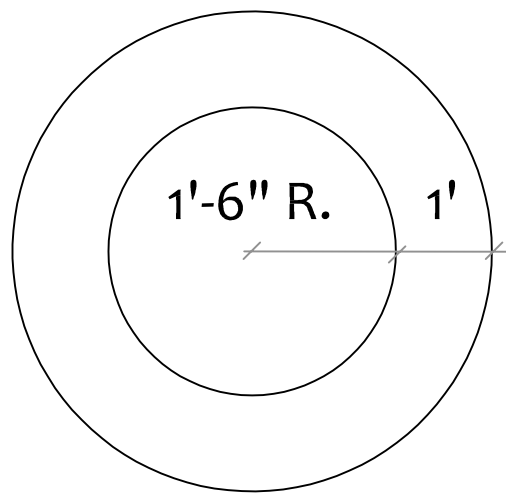
SHEET NO.  
**4 of 6**



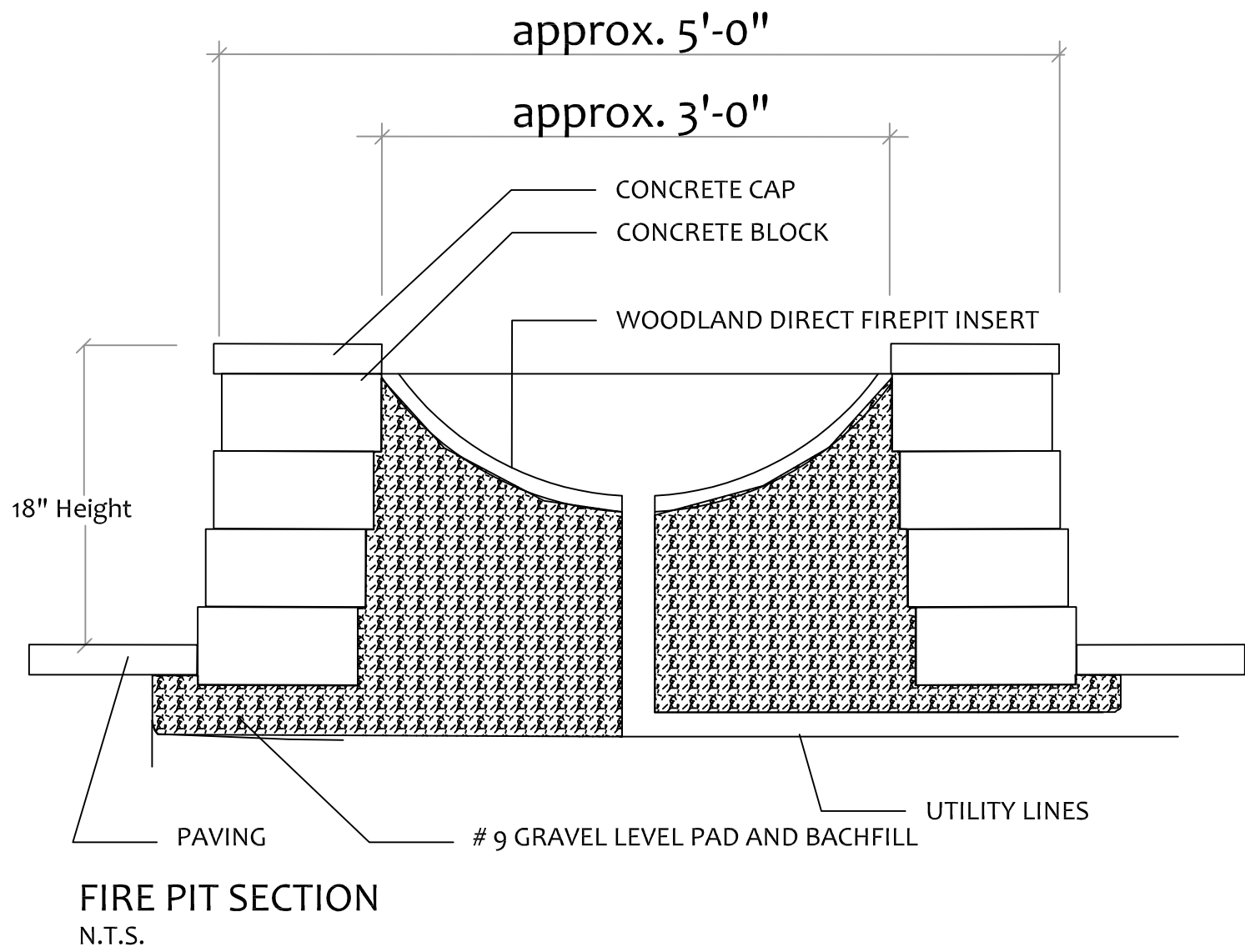


SITE-CRAFT  
TEL: 1 (800) 937-0203  
WEB SITE: HTTP://WWW.SITE-CRAFT.COM  
Posts to be direct bury.

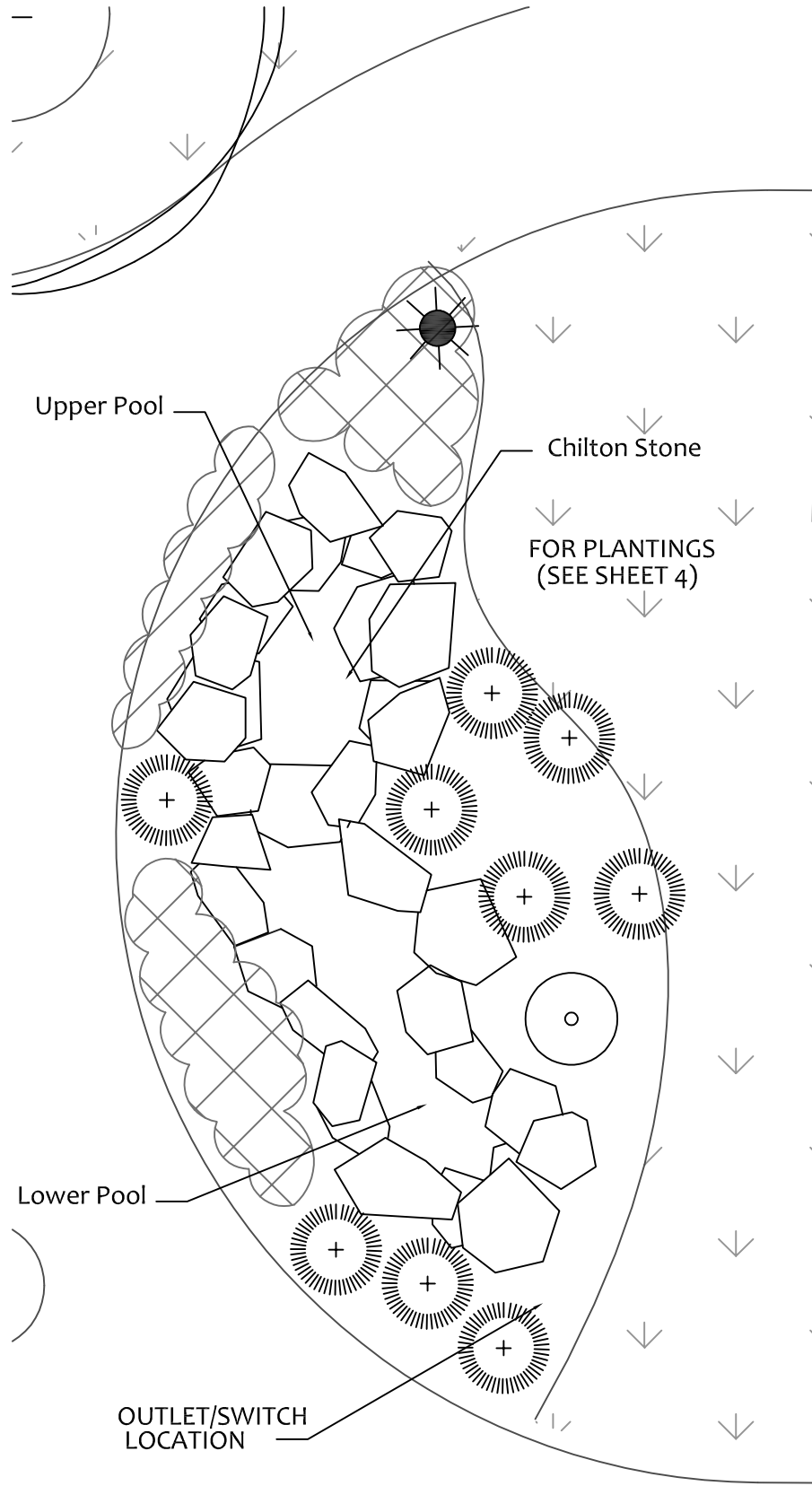
- FIRE PIT NOTES**
1. WOODLAND DIRECT FIRE PIT INSERT, 36" PAN, 24" BURNER WITH EXTERIOR SHUTOFF TIMER, EMERGENCY SHUT OFF, LAVA ROCK, FIRE PIT LOGS AND ALL WEATHER OUTDOOR IGNITION, TO BE INSTALLED PER MANUFACTURERS SPECIFICATIONS.
  2. FIRE PIT TO BE ENCLOSED BY UNILOCK OLDE QUARRY CONCRETE BLOCK WALL AT 18" HIGH, TO BE EITHER RIVER OR PRAIRIE COLOR TO BE SELECTED BY OWNER TO COMPLEMENT BUILDING COLORS. CONCRETE CAP TO BE UNILOCK LEDGESTONE BUFF COLOR.
  3. 36" SPARK ARRESTOR SHALL BE PROVIDED UPON COMPLETION.



FIRE PIT PLAN VIEW  
N.T.S.

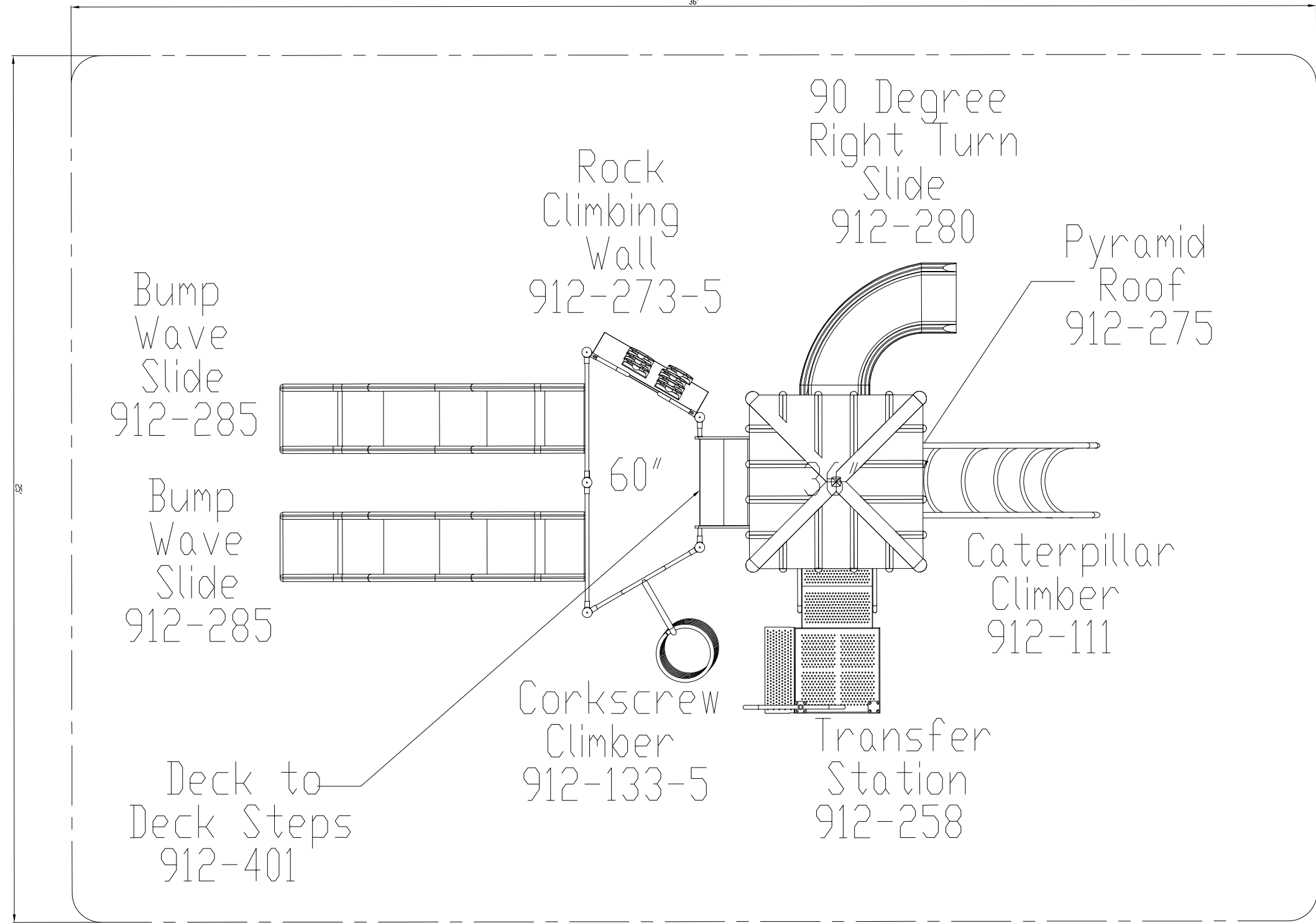


FIRE PIT SECTION  
N.T.S.



WATER FEATURE DETAIL (SCALE: 1/4" = 1.0')

- WATER FEATURE NOTES**
1. STONE WATER FEATURE TO BE CONSTRUCTED WITH CHILTON STONE, TO BE SITE BUILT WITH OWNER.
  2. WATER FEATURE SHALL BE CONTAINED BY WATER PROOF LINER.
  3. WATER PUMP TO BE AN EG DANNER MFG MODEL # 02519 OR 06220 OR EQUAL.
  4. ELECTRICAL OUTLET AND SWITCH FOR PUMP OPERATION TO BE LOCATED AS INDICATED ON DETAIL AS SHOWN ON THIS SHEET.
  5. WATER FEATURE TO BE LIT.



PLAYGROUND DETAIL (SCALE: 1/2" = 1.0')  
(Color to be determined by owner)

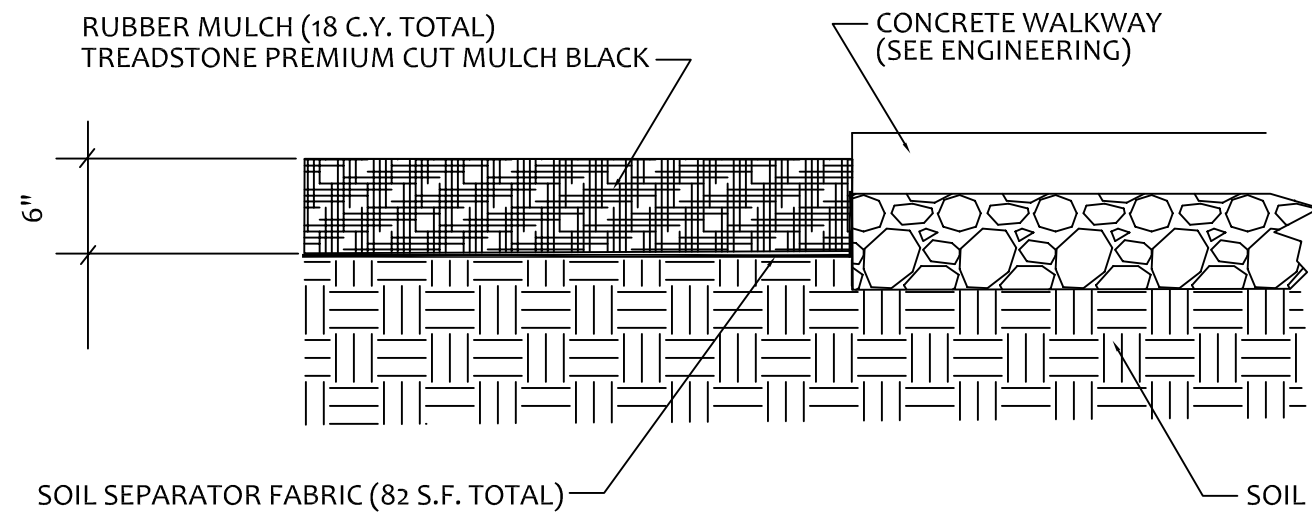
- PLAYGROUND NOTES**
1. PLAYGROUND TO BE A SPORTSPRAY SOPHIA 24' X 13' PLAY STRUCTURE.
  2. SEE DETAIL THIS SHEET #2 FOR USE ZONES.
  3. INSTALL PER MANUFACTURERS SPECIFICATIONS.
  4. SEE ENGINEERING PLANS FOR UNDER-DRAINAGE.
  5. PROVIDE COLOR SAMPLE FOR OWNER APPROVAL.

**CONTACT**

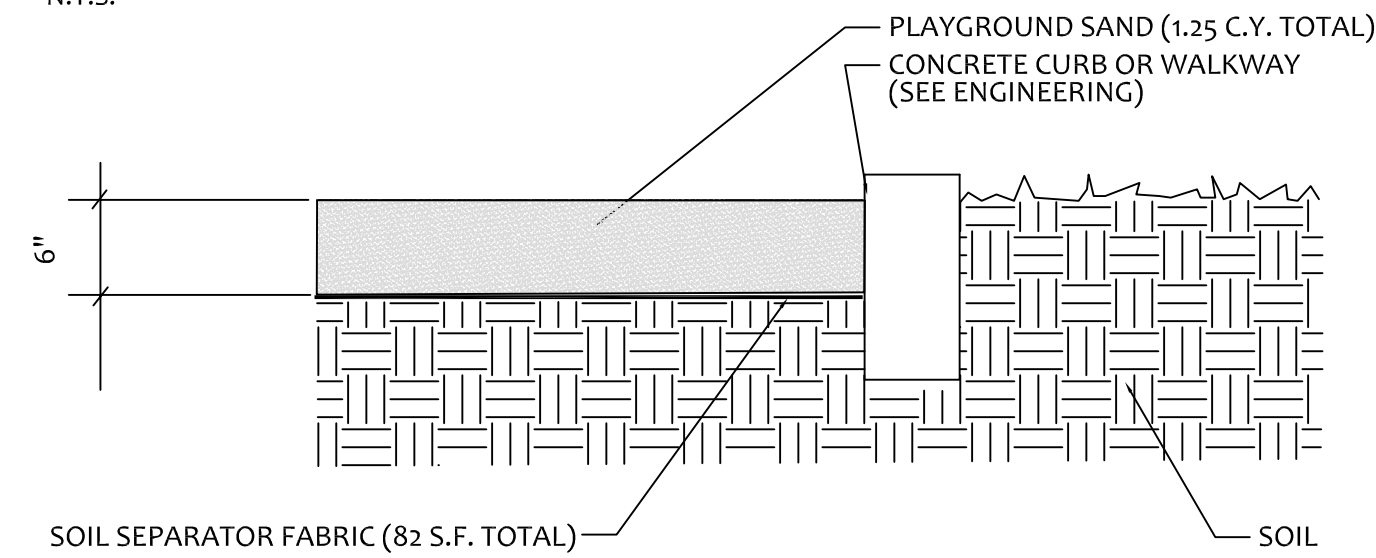
TREADSTONE LLC RUBBER PRODUCTS  
1720 TERMINAL ROAD, BLDG. E  
NILES, MI 49120  
TEL. 1(269) 591-7950  
FAX. 1(269) 591-7949  
WEB SITE: HTTP://WWW.TREADSTONELLC.COM

**CONTACT**

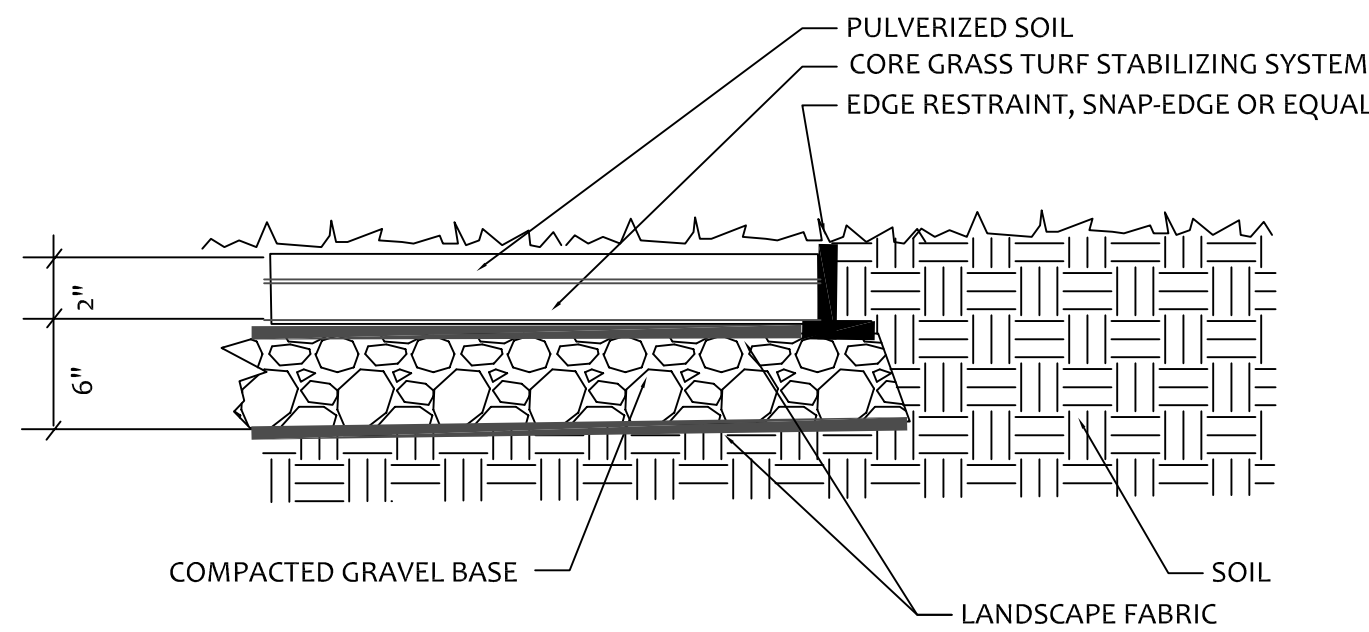
SPORTSPRAY  
5642 NATURAL BRIDGE AVE.  
ST. LOUIS, MO, 63120  
TEL. 1(314) 389-4140  
WEB SITE: HTTP://WWW.SPORTSPRAYINC.COM



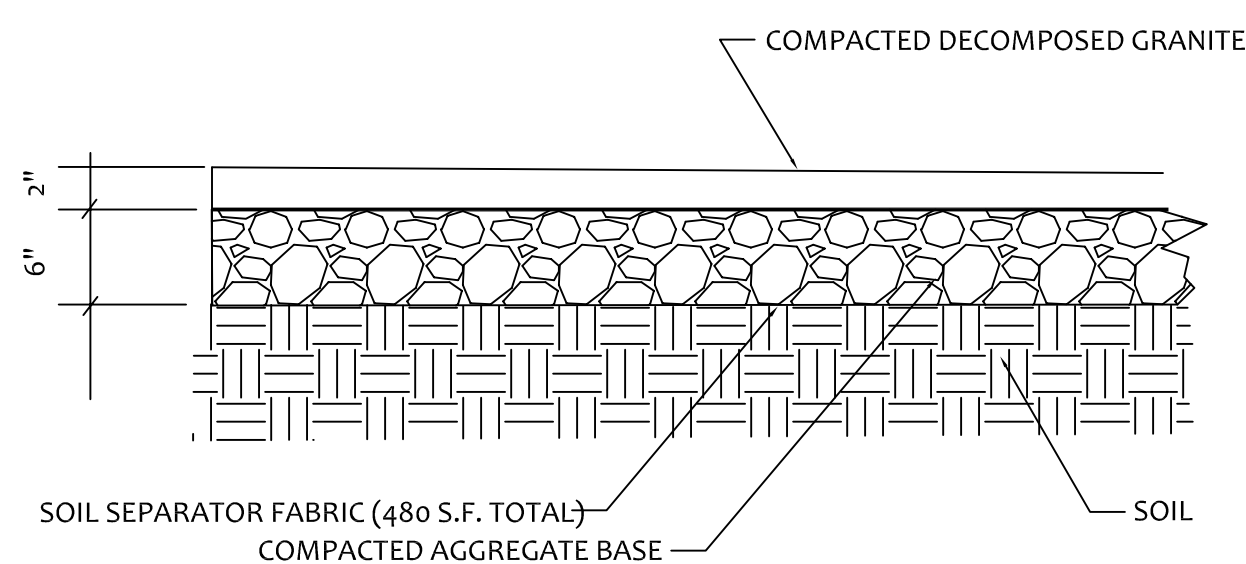
PLAYGROUND MULCH DETAIL  
N.T.S.



SANDBOX DETAIL  
N.T.S.



CORE TURF STABILIZING DETAIL  
N.T.S.



DECOMPOSED GRANITE SURFACE DETAIL  
N.T.S.

**Cedarwood Development**  
3030 WEST MARKET ST.  
FAIRLAWN, OHIO 44133  
F: 330-836-4591  
Ron D'Nardo  
Director of Development  
(330) 714-9671  
Laura Heiler  
VP of Senior Housing  
(330) 714-9671



**Karl T. Krogstad**  
Illinois Registered Landscape Architect  
License No. 157-000349 - Expires 08/31/2021  
**KROGSTAD**  
LAND DESIGN LIMITED  
LANDSCAPE ARCHITECTURE \* CONSULTING  
519 PEMBROOK CT. N., CRYSTAL LAKE, IL 60014  
P. 815-539-1591  
F. 815-539-1591  
KROGSTAD@LANDDESIGNLIMITED.COM

# LANDSCAPE PLAN FOR LOT 1 OF MELODY TOWN CENTER AURORA, ILLINOIS

PROJECT # HEL1723

Date: 11/18/20

REVISIONS:  
Rev: 12/17/20  
Rev: 2/18/21  
Rev: 3/23/21

DRAWN KTK

CHECKED KTK

SHEET NO.



LANDSCAPE WORK

PART 1 - GENERAL

1.01 SUMMARY

- A.Landscape work includes the following:
1. Lawns
  2. Perennials, and Ornamental Grasses
  3. Trees and shrubs
  4. Planting soil mixture
  5. Fertilizer
  6. Trunk wrap
  7. Stakes and guys
  8. Mulch

1.02 SUBMITTALS

- A.Planting schedule  
Submit two (2) copies of the proposed planting schedule to client and Landscape Architect showing dates for each type of planting.
- B.Certification of seed mixture for sod, identifying sod source, including name and address of supplier.
- C.Data substantiating that perennials, and Ornamental Grasses. Comply with specified requirements.
- D.Data substantiating that trees and shrubs comply with specified requirements.
- E.Material test reports from a qualified independent testing agency indicating and interpreting test results for the following materials.
1. Analysis of existing topsoil
  2. Analysis of imported soil
- Submittal should include recommendations for soil additive requirement for Landscape Architect's review.
- H.Provide shredded hardwood mulch sample to Landscape Architect.

- I. Qualification data for firms and individuals dedicated to the job, to demonstrate their capabilities and experience. Include list of completed projects, with project and owner's names and addresses, and other pertinent information.
- J. Maintenance instructions recommending procedures to be established by the owner to maintain the landscaping during the entire year. Submit two (2) copies before expiration of required maintenance period. Instructions shall include: watering, fertilizing, spraying, mulching, pruning and trimming for plant material, groundcovers and perennials. Instructions for watering, fertilizing, and moving turf areas shall be provided.

1.03 QUALITY ASSURANCE

- A.Installing contractor to have a minimum of 5 years experience on comparable projects.
- B.Installing Contractor to maintain an experienced full time supervisor on the project site during times that landscape installation is in progress.
- C.Landscape Contractor to conduct a pre-construction meeting with owner's representative and Landscape Architect prior to commencement of construction.
- D.Substitution will not be permitted without approval of the Landscape Architect and governing municipality.

1.04 DELIVERY, STORAGE, AND HANDLING

- A.Packaged materials: Deliver packaged materials in containers showing weight, analysis, and name of manufacturer. Protect materials from moisture and deterioration during delivery and while stored at site.
- B.Trees and shrubs: Deliver freshly dug trees and shrubs directly to jobsite. Do not prune before delivery. Protect bark, branches, and root systems from sun scald, drying, whipping and other handling and tying damage. Do not bend or tie plant material in such a manner as to destroy the natural shape. Provide protective covering during transport and delivery.
- C.Handle balled and bur lapped stock by the root ball. Handle container stock by the container.
- D.Deliver plant material after planting preparations have been completed, and install immediately. If planting is delayed more than 8 hours, after delivery, set plant material in shade, protect from weather and mechanical damages, and keep roots moist.
1. Set balled and bur lapped stock on ground and cover ball with soil, peat moss or shredded hardwood mulch.
  2. Do not remove container-grown stock from containers before time of planting.

1.05 PROJECT CONDITIONS

- A.Examine and evaluate entire site including grades, soils; water level, and existence of debris. Observe the conditions under which work is to be performed and notify Landscape Architect immediately of any unsatisfactory conditions. Do not proceed with work until all unsatisfactory conditions have been addressed in an acceptable manner.
- B.Utilities: Prior to commencement of work, review all underground utility location plans, notify local utility location service to clearly mark all underground utilities. Determine the location of all above grade and overhead utilities and perform work in a manner that will avoid damage. Provide plan for protection of utilities, including hand excavation, as necessary. Contractor shall be responsible for any damage to utilities or property.
- C.Excavation: When conditions detrimental to plant growth are encountered, including but not limited to rubble fill, adverse drainage conditions, or obstructions, notify Landscape Architect prior to planting.

1.06 COORDINATION AND SCHEDULING

- A.Coordinate installation of planting materials during industry accepted planting seasons for each type of plant or seed specificl.
- B.Coordinate with other trades performing work on site to minimize potential conflicts and prevent damage to plant materials.
- C.Contractor shall secure all plants and materials for landscaping immediately after being awarded contract to ensure availability.

1.07 WARRANTY

- A.Warrant the following plant materials for a period of one year after date of final acceptance, against defects including death, unsatisfactory growth, except for defects resulting from lack of adequate maintenance, neglect by owner, abuse, vandalism or inadvertent damage by others, or unusual phenomena including abnormal weather conditions or incidents during the warranty period that are beyond the Landscape Contractor's control:
1. Trees
  2. Shrubs
  3. Perennials, & Ornamental Grasses
- B.Remove and replace dead plant material immediately. If replacement is delayed to the next planting season, the dead plant material shall be removed immediately.

GENERAL NOTES

1. CONTRACTOR IS RESPONSIBLE FOR VERIFYING QUANTITIES, AND FOR PROVIDING SUFFICIENT MATERIALS TO COMPLETE THE JOB PER PLAN.
2. CONTRACTOR SHALL VERIFY UNDERGROUND UTILITY LOCATIONS PRIOR TO COMMENCEMENT OF WORK. CONTRACTOR SHALL AVOID ALL EXISTING UTILITIES, UNDERGROUND AND OVERHEAD WHERE APPLICABLE, AND IS RESPONSIBLE FOR ANY DAMAGE. IF ANY CONFLICTS SHOULD EXIST BETWEEN UTILITIES AND PROPOSED MATERIAL LOCATIONS, FIELD ADJUSTMENTS MUST BE APPROVED BY THEOWNER OR DESIGNATED AGENT PRIOR TO INSTALLATION.
3. CONTRACTOR SHALL VERIFY ALL EXISTING CONDITIONS IN THE FIELD PRIOR TO COMMENCEMENT OF CONSTRUCTION, AND SHALL REPORT TO LANDSCAPE ARCHITECT ANY VARIANCE OR CONDITION WHICH WOULD PREVENT ADHERENCE TO SCHEDULE, PLANS OR SPECIFICATIONS.
4. WORK SHALL CONFORM TO AMERICAN STANDARD FOR NURSERY STOCK, STATE OF ILLINOIS HORTICULTURAL STANDARDS, AND LOCAL MUNICIPAL REQUIREMENTS.
5. THE OWNER OR DESIGNATED AGENT RESERVES THE RIGHT TO REJECT LANDSCAPE MATERIAL ON SITE WHETHER STOCK PILED OR INSTALLED IN PLACE.
6. THE OWNER OR DESIGNATED AGENT RESERVES THE RIGHT TO INSPECT ALL PLANTED MATERIAL EITHER AT PLACE OF GROWTH OR AT SITE BEFORE PLANTING, FOR COMPLIANCE WITH REQUIREMENTS OF VARIETY, SIZE AND QUALITY.
7. ALL PLANTS SHALL BE INSTALLED PER THE LANDSCAPE PLAN AND SPECIFICATIONS. PLANTINGS NOT FOUND TO BE IN COMPLIANCE SHALL BE REPLANTED CORRECTLY AT NO ADDITIONAL EXPENSE TO THE OWNER.
8. FINE GRADE, FERTILIZE AND SOD/SEED ALL DISTURBED AREAS WITHIN THE CONSTRUCTION LIMITS AS SHOWN. ALL AREAS SHALL DRAIN COMPLETELY AND SHALL NOT POND OR PUDDLE.
9. WHERE PLANTING BEDS MEET TURF AREAS, THE CONTRACTOR SHALL PROVIDE A CULTIVATED EDGE. MULCH ALL SHRUB BEDS TO THE LINE SHOWN.
- 10.FOR TREES PLANTED IN TURF AREAS, PROVIDE 3'-0" dia. MULCH RING (REMOVE EXISTING TURF) AT 4" THICK WITH A CULTIVATED EDGE.
11. CONTRACTOR SHALL SECURE AND PAY FOR ALL PERMITS, FEES, AND INSPECTIONS NECESSARY FOR THE PROPER EXECUTION OF THIS WORK AND COMPLY WITH ALL CODES APPLICABLE TO THIS WORK.
12. ENSURE ALL TREES ARE 25 FEET FROM LIGHT POLES, 4 FEET FROM DRIVES, 8 FEET FROM HYDRANTS AND 5 FEET FROM MANHOLES.
13. SOME FIELD ADJUSTMENTS MAY BE NECESSARY TO ENSURE THAT THERE ARE NO CONFLICTS BETWEEN EXISTING AND PROPOSED TREES.
14. MATERIAL QUALITY AND MEASUREMENT SHOULD CONFORM TO THE MOST RECENT EDITION OF THE AMERICAN STANDARDS FOR NURSERY STOCK, ANSIZ60 BY THE AMERICAN NURSERY AND LANDSCAPE ASSOCIATION.
15. ALL SHADE/OVERSTORY TREES SHALL HAVE A 'CENTRAL LEADER'.
16. THE OWNER OR DESIGNATED AGENT MAY INSPECT AND APPROVE ALL PLANT MATERIAL PRIOR TO INSTALLATION. ANY MATERIAL INSTALLED WITHOUT APPROVAL MAY BE REJECTED.
17. THE VILLAGE MAY REJECT ANY MATERIALS THAT ARE DISEASED, DEFORMED, OR OTHERWISE NOT EXHIBITING SUPERIOR QUALITY.
18. CONTRACTOR SHALL BE RESPONSIBLE FOR PROVIDING AND INSTALLING ALL MATERIALS SHOWN ON THE PLAN IN ACCORDANCE WITH THE PLAN DESIGN AND MATERIALS QUANTITIES.
19. THE CONTRACTOR IS RESPONSIBLE FOR PROTECTING UNDERGROUND UTILITIES, SIDEWALKS, AND OTHER PREVIOUSLY CONSTRUCTED SITE IMPROVEMENTS.
- 20.THE CONTRACTOR IS RESPONSIBLE FOR PROTECTING ALL EXISTING VEGETATION TO BE PRESERVED.
21. TOPSOIL TO BE SPREAD IN ALL LAWN AREAS DESIGNATED AS SEED OR SOD, PER THE ENGINEERS SPECIFICATIONS.
- 22.NO HARDWOOD MULCH SHALL BE INSTALLED IN AREAS DESIGNED TO DETAIN STORM-WATER OR IN AREAS LESS THAN 15" ABOVE LOCAL DEPRESSIONS

- C.Replace plant materials that are partially dead, in unhealthy condition or where shape and symmetry have been affected at the end of the warranty period. Final determination of material requiring replacement shall be made by the Landscape Architect.
- D.Replacement plant material shall be of the same kind, size, and quality as those originally planted, unless otherwise approved in writing by Landscape Architect. Replacement plants shall carry the same establishment period as the original.
- E. A limit of one replacement of each plant will be required, except for losses or replacements due to failure to comply with requirements.

- F.Final acceptance will be made only if all plants are in place, in satisfactory conditions and in conformance with the drawing, as determined by Landscape Architect.

1.08 TREE, SHRUB, & LAWN MAINTENANCE

- A.Maintenance agreement: The landscape contractor shall provide maintenance for a period of 90 days from the date of acceptance or substantial completion as determined by Landscape Architect.
- B.Maintain trees and shrubs by pruning, cultivating, watering, weeding, fertilizing, restoring planting saucers and bed lines, tightening and repairing stakes, and guy supports, resetting to proper grades or vertical position, as required to establish healthy, viable plantings. Apply insecticides and herbicides as required to keep trees and shrubs free of insects and disease. Restore or replace damaged tree wrappings. Maintain trees, shrubs, and lawns until final acceptance by the Landscape Architect. Supply adequate water for all plant material within the warranty period after the final acceptance.
- C.Maintain and establish lawns by watering, fertilizing, weeding, mowing, and trimming as necessary. Roll re-grade, and replant bare or eroded areas and re-mulch to produce a uniformly smooth lawn.
- D.Mow lawn a soon as top growth reaches no more than 40% of 2" mowing height. Repeat subsequent mowing as required to maintain height without cutting more than 40% of the grass of the grass-leaf growth. Do not delay mowing until grass blades bend over and become matted. Do not mow when grass is wet.

1.09 FINAL INSPECTION & ACCEPTANCE

- A.Final acceptance, which marks the beginning of the warranty and maintenance period, will be made by the Landscape Architect upon a written request by the Landscape Contractor after all plants are in place per specifications. The request for inspection shall be submitted to the Landscape Architect at least ten (10) days prior to the inspection date.
- B.The Contractor will be notified in the form of a written punch list, any deficiencies to be fulfilled in order to receive the final acceptance. All outstanding items shall be subject to re-inspection before final acceptance is issued.
- C.Upon contractor completion of punch list, Landscape Architect shall re-inspect all work to determine completion. The contractor and owner will be notified in writing of final acceptance, and commencement of one year warranty period.
- D.Upon completion of one year warranty period, contractor shall submit request for one year warranty inspection to Landscape Architect at least ten (10) days prior to inspection date.
- E.The Contractor shall be notified in the form of a written punch list any deficiencies based on section 1.08. All outstanding items shall be subject to re-inspection before final warranty acceptance is issued.
- F.Upon contractor completion of warranty punch list, Landscape Architect shall re-inspect all work to determine compliance. The Contractor and owner will be notified in writing of final warranty inspection.

PART 2 - MATERIALS

2.01 MATERIALS

- Grass seed: Provide fresh, clean, new crop seed complying with the Association of Official Seed Analysts of North America "Rules for Testing" for purity and germination tolerances. Provide seed of grass species and varieties proportions by weight, and minimum percentages of purity, germination, and maximum percentages of weed seed:

Arthur Clesen Premium Kentucky Bluegrass blend seed Mixture.  
IDOT Class 5A Large Flower Native Forb Mixture  
Highland Fescue Seed.

2.02 SOD

Kentucky Bluegrass Blend Sod.

2.03 PERENNIALS, & ORNAMENTAL GRASSES

- A.Name and Variety: Provide nursery grown plant material true to name and variety.
- B.Provide plants established and well-rooted in removable containers or integral peat pots and with not less than the minimum number and length of runners required by ANSI Z60.1 for the pot size shown and listed. Provide species, sizes and quantities of plants specified on sheet 1.

2.04 TREES & SHRUBS

- A.Name and Variety: Provide nursery grown plant material true to name and variety per sheets 1 & 2.
- B.General: Provide plant material complying with the recommendations and requirements of ANSI Z60.1 "Standard for Nursery Stock" with healthy root systems, developed by transplanting or root pruning. Provide well shaped, fully branched, healthy, vigorous stock free of disease, insects, eggs, larvae, and defects such as knots, sunscald, injuries, abrasion, and disfigurement.
- C.Deciduous Shade Trees: Provide trees of caliper and quantity listed on sheets 1& 2 with branching configuration recommended by ANSI Z60.1 for type and species required. Provide single stem trees with straight trunk, well-balanced crown, and intact leader. Provide balled and burlapped (B&B) deciduous trees.
- D.Deciduous Ornamental Trees: provide trees of height or caliper and quantity listed on sheets 1 & 2, branched or pruned naturally according to species and type, conforming to ANSI Z60.1.
- E.Evergreen Trees: Provide trees of height and quantity listed on sheet 1 Provide quality evergreens, with well-balanced evenly branched form, single stem, with straight trunk and intact leader. Provide balled and burlapped (B&B) evergreen trees.
- F.Deciduous Shrubs: Provide shrubs of the height of spread shown, and quantity listed on sheet 1 with not less than the minimum number of canes required by ANSI Z60.1 for the type and height of shrub required. Provide balled and burlapped (B&B) or containerized deciduous shrubs.
- G.Inspection: All plants shall be subject to inspection and review at the place of growth, upon delivery or after installation. Plants shall be inspected as to conformity to specification requirements and quality. Landscape Architect has the right to reject plant material at time of inspection due to non-compliance to ANSI Z60.1 size and condition of root balls, diseases, insects and latent defects or injuries. Landscape Architect reserves the right to remove tree wrap or soil backfill for any installed plantings, as a part of the inspection process. Rejected plants shall be removed immediately from the site.

2.05 SOIL

- A.Existing Soil: Revise pulverized surface soil stockpiled on the site. Verify suitability, of topsoil, free of stones 1" or larger in any dimension, and other extraneous materials harmful to plant growth, to produce topsoil meeting requirements and amend when necessary. Supplement with imported topsoil when quantities are insufficient. Clean topsoil of roots, plants, sods, stones, clay lumps and other extraneous materials harmful to plant growth.
- B.Imported Topsoil: Import topsoil from off-site sources that meets the criteria established for existing topsoil. Obtain topsoil from naturally well-drained sites where topsoil occurs at least 4" deep.
- C.Planting Soil Mixtures: Provide planting soil mixture consisting of three (3) parts friable topsoil (stockpiled at site) and one part mushroom compost (1) for all planting pits, perennial, annual, and groundcover areas.

2.06 FERTILIZER

- A.Slow Release Fertilizer: Granular fertilizer consisting of 50% water-insoluble nitrogen, phosphorus, and potassium in composition and amounts recommended in soil reports from a qualified soil-testing agency.

2.08 TREE WRAP

- A.Standard waterproofed tree wrapping paper, 2 ½ inches wide, made of two (2) layers of crepe kraft paper, weighing not less than 30 pounds per ream (Fall planting only).

2.09 MULCH

- A.Organic mulch, free from deleterious materials and suitable as a top dressing of trees and shrubs, consisting of shredded hardwood mulch. Provide sample to Landscape Architect for approval.

2.10 STAKES & GUYS

- A.Upright and Guys Stakes: Rough-sawn, sound, new hardwood, free of knots, holes, cross grain, and other defects, 2 by 2 inches by length indicated on landscape details, pointed on one end.
- B.Guy and Tie Wire: ASTM A 641 Class 1, Galvanized-steel wire, 2-strand, twisted 0.106 inches in diameters.
- C.Guy Cable: 5-strand, 3/16 inches diameter, galvanized-steel cable, with zinc-coated turn buckles, 3 inches long minimum, with two (2) 3/8 inches galvanized eyebolts.
- D.Hose Chafing Guard: Reinforced rubber on plastic hose at least ½ inches in diameter, cut in lengths required to protect tree trunk, from damage.

PART 3 - EXECUTION

3.01 PLANTING SCHEDULE

- A.At least thirty (30) days prior to commencement of work for each area or phase, Landscape Contractor shall submit a planting schedule for approval by the Landscape Architect.

3.02 EXAMINATION

- A.Landscape Contractor shall examine all areas to receive landscaping for compliance with requirements and for conditions affecting performance of work. Notify owner and Landscape Architect of unsatisfactory conditions. Do not proceed with installation until unsatisfactory conditions have been corrected.

3.03 PREPARATION

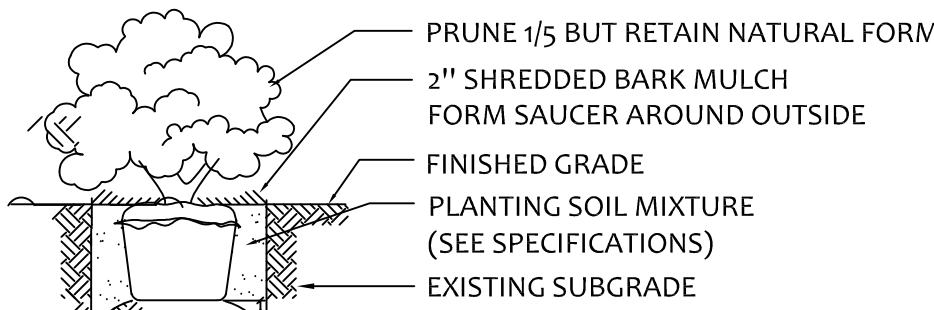
- A.Lay out individual tree and shrub locations and plant beds. Stake locations, outline areas and secure Landscape Architect's acceptance before the start of planting work. Adjust as required. Any planting completed without prior approval may be subject to alteration in field by Landscape Architect.

3.04 PLANTING SOIL PREPARATION

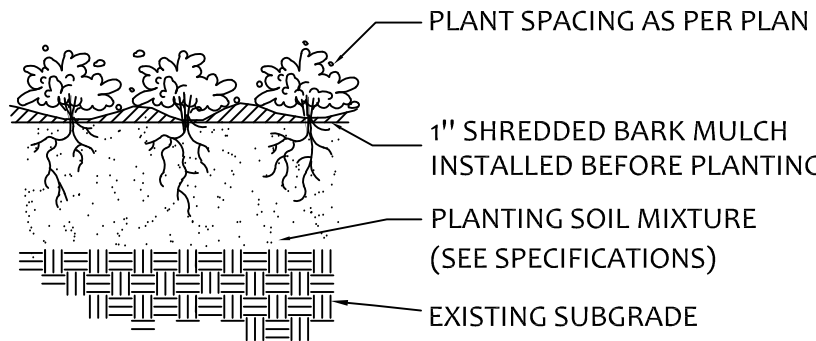
- A.Before mixing, remove all roots, vegetation, turf, stones, clay lumps, and other extraneous materials harmful to plant growth.
- B.Mix soil Amendments and fertilizers as determined with topsoil, based on material test reports.

3.05 GENERAL LAWN PLANTING PREPARATIONS

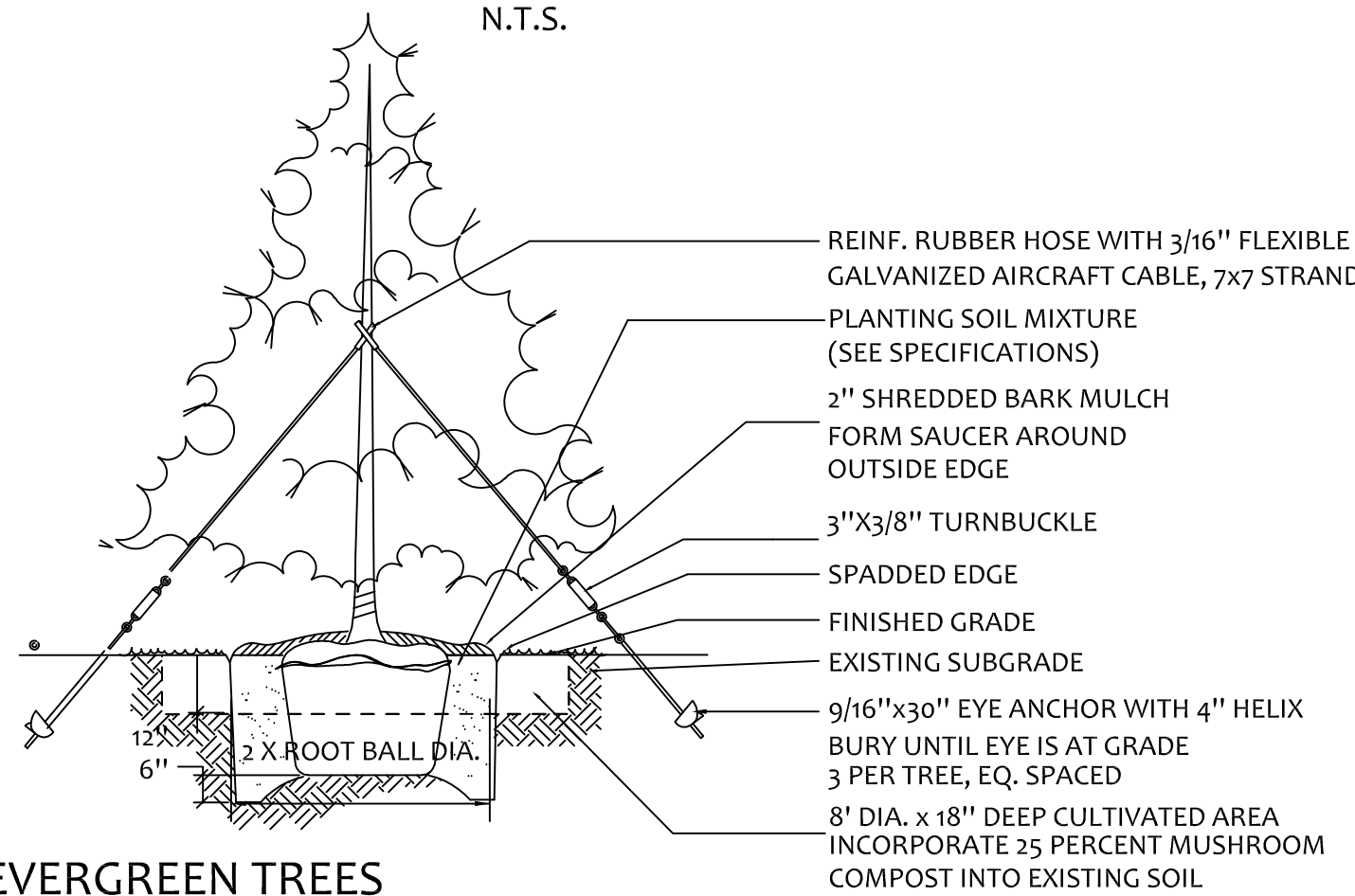
- A.General: Limit subgrade preparation to areas that will be planted within five (5) days.
- B.Remove existing grasses, vegetation, and turf.
- C.Loosen subgrade to a minimum depth of two (2) inches. Remove stones larger than one (1) inch in any dimensions, sticks, roots, rubbish, and other extraneous materials.
- D.Dispose of all removed material legally off-site; do not turn over into soil being prepared for lawns, or other areas on site.
- E.Spread topsoil mixture to depth required to meet thickness, grades, and elevations shown, after light rolling and natural settlement. Do not spread if planting soil or subgrade is frozen.
1. Respread approximately ½ the depth of topsoil mixture required, work into top of loosened subgrade to create a transition layer. Upon completion, respread remainder of topsoil mixture.
- F.Preparation of unchanged grades: Where lawns are to be planted in areas unaltered or undisturbed by excavating, grading, or surface soil stripping operations, prepare soil as follows:
1. Remove and dispose legally off-site existing grass, vegetation, and turf. Do not turn over into soil being prepared for lawns, plant beds or native seeding.
  2. Till surface soil to a depth of at least 2 inches. Apply required soil amendments and mix thoroughly into top 2 inches of soil. Trim high areas and fill in depressions. Till soil to a homogenous mixture of fine texture.
  3. Clean surface soil of roots, vegetation, grass, stones over 1 inch in any dimension, clay lumps and other extraneous materials harmful to plant growth. Dispose of legally off-site.
- G.Grade lawn areas to a smooth, even surface with loose, uniformly fine texture. Roll and rake, remove ridges, and fill depressions to meet finish grades. Limit fine grading to areas that can be planted within 5 days. Remove trash, debris, stones larger than 1 inch in any dimension, and other objects that may interfere with planting or maintenance operations.
- H.Moisten prepared lawn areas before planting when soil is dry. Water evenly and allow surface to dry before installation. Do not allow water to pond or create muddy soil.
1. Restore prepared areas if eroded or otherwise distributed after fine grading and before installation.



DECIDUOUS AND EVERGREEN SHRUBS  
N.T.S.



PERENNIALS AND GROUNDCOVERS  
N.T.S.



EVERGREEN TREES  
N.T.S.

3.07 SODDED LAWN

- A.Sodded areas shall receive an application of commercial fertilization at a rate of 10 pounds per 1,000 sq. ft.
- B.Lay sod within 24 hours from time of stripping.
- C.Lay sod to from a solid mass with tightly fitted joints. Butt ends and sides of sod strips; do not overlap and do not leave gaps. Adjacent to planting beds, lay first row of sod strip to follow bed line. Trim adjacent sod strips to fit snugly against initial strip. On slopes, length of sod strips shall follow contour. On slopes greater than 3:1, secure sod with degradable pine spikes to assure that strips remain in place. Work from boards to avoid damage to subgrade or sod. Tamp or roll lightly to ensure contact with subgrade. Work sifted soil or fine sand into minor cracks between pieces of sod: remove excess to avoid smothering beds.
- D.Water sod thoroughly with a fine spray immediately after planting.
- E.Remove all sod waste and spoils legally off-site.

3.08 SEEDED LAWN

- A.Seeded lawn areas shall receive an application of commercial fertilizer 6-24-24 at the rate of 5 pounds per 1,000 sq. ft. Fertilizer shall be uniformly spread and mixed into soil to a depth of 1 inch.
- B.Do not use wet seed or seed which is moldy or otherwise damaged.
- C.Sow seed using a spreader or seeding machine. Do not apply seed when wind velocity exceeds five (5) miles per hour. Distribute seed evenly over entire designated area by sowing an equal quantity in two directions at right angles to each other.
- D.Do not sow less than the specified rate.
- E.Rake lawn seed lightly into top 1 inch of soil, roll lightly and water with a fine spray.
- F.After the seeding operation is completed, spray recycled fiber mulch (Lebanon PennMulch or equal as approved by Landscape Architect) over the entire seeded area, unless otherwise specified, at the rate of 2000 pounds per acre. Use a mechanical spray unit to insure uniform coverage. Exercise care to protect buildings, automobiles, paving, amenities, etc. during the application of the mulch.
- G.For slopes greater than 3:1, or in areas indicated on Landscape Plans. Install erosion control blanket per manufacturer's specifications.
- H.Seed germination performance standard: No bare spots over 5" in size or coverage less than 90% over any 10 sq. ft. area will be accepted. If such conditions exist at time of one year warrantee inspection, areas shall be re-seeded.

3.12 PERENNIAL & ORNAMENTAL GRASS BED PREPARATION

- A.Loosen subgrade of planting bed areas to a minimum depth of 6 inches. Remove stones larger than 1 inch in any dimension and sticks, roots, rubbish, and other extraneous materials.
- B.Spread planting soil mixture to depth required to meet thickness, grades, and elevations shown, after light rolling and natural settlement. Place approximately 4 inches of planting soil mixture, and work into top of loosened subgrade to create a transition layer. Place remainder of planting soil mixture, for a minimum of 8 inch depth.

3.13 PERENNIAL S & ORNAMENTAL GRASSES

- A.Install holes large enough to allow spreading of roots, and backfill with planting soil. Work soil around roots to eliminate air pockets and leave a slight saucer indentation around plants to hold water. Water thoroughly after planting, taking care not to cover plant crowns with wet soil.

3.14 EXCAVATION FOR TREES & SHRUBS

- A.Trees And Shrub Pits: Exchange with vertical sides and bottom of excavation slightly raised at center to assist drainage. Loosen hard subsoil or existing subgrade in bottom of tree pit.
1. Balled And Burlapped Trees And Shrubs: Excavate approximately 2 times as wide as ball diameter and 1 inch less than ball depth. Cultivate soil around tree pits to a depth of 18 inches and diameter of 8 inches and incorporate 25% mushroom compost into existing soil to promote root growth.
  2. Container Grown Shrubs: Excavate approximately 2 times as wide as container width equal to container depth.
- B.Obstructions: Notify Landscape Architect if unexpected rock or obstructions detrimental to trees or shrubs are encountered in excavation.
- C.Drainage: Notify Landscape Architect if subsoil conditions evidence or unexpected water seepage or retention in tree or shrub pits.
- D.Fill excavations with water and allow to percolate out before placing, setting layer, and positioning trees and shrubs.

3.15 PLANTING TREES & SHRUBS

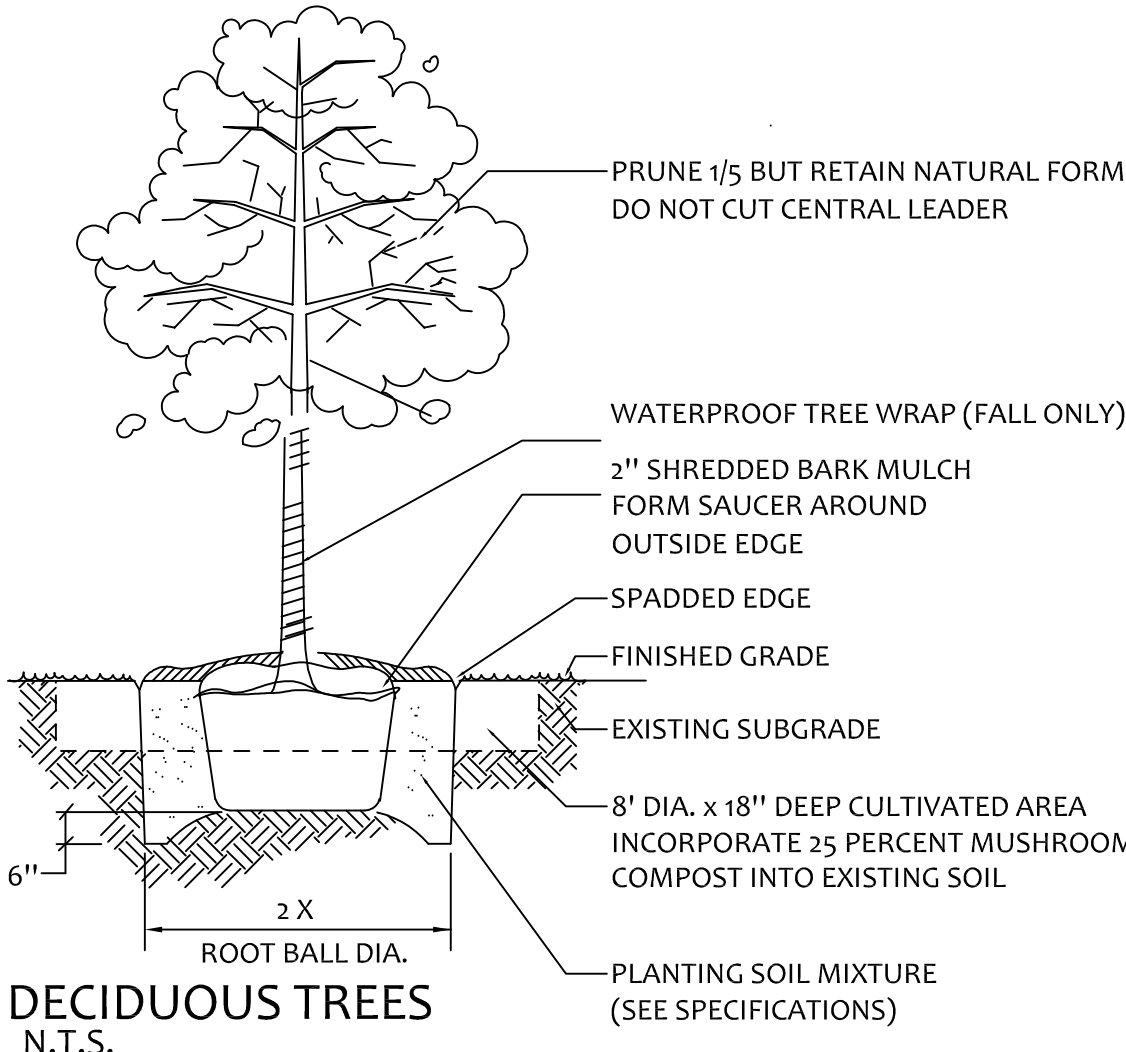
- A.Set balled and burlapped plant material plumb and in center of pit or trench with top of ball raised 1 inch above adjacent finished grades. Remove burlap and wire baskets from tops of ball, and partially from sides, but do not remove from under balls. Do not use plant material if ball is cracked, or broken before or during planting operation.
- B.Set container-grown shrubs plumb and in center of pit with top of ball raised 1 inch above adjacent finished grade. Carefully remove containers so as not to damage root balls. Place shrub on setting layer of compacted planting soil.
- C.Place backfill around root ball in layers, tamping to settle backfill and eliminate voids and air pockets. When pit is approximately ½ backfilled, water thoroughly before placing remainder of backfill. Repeat watering until no more is absorbed. Water again after placing and tamping final layer of backfill.
- D.Dish and tamp top of backfill to form a 3 inch high mound around rim of pit. Do not cover top of root ball with backfill.
- E.Cut a 3 inch deep spaced trench around all individual tree pits, or around plant beds.
- F.Mulch tree rings and plant beds. Spread mulch evenly at a depth of 3 inches. Cover root balls and match finish level with adjacent finish grades. Remove any bark pieces in excess of 6 inches, and dispose of legally off-site.
- G.Prune, thin and shape trees and shrubs according to standard horticultural practice. Prune trees to retain required height and spread unless otherwise directed by Landscape Architect. Do not cut leaders; remove only injured or dead branches from flowering trees. Prune shrubs to retain natural character. Shrub sizes indicated are size after pruning. Remove and replace excessively pruned or ill-formed stock resulting from improper pruning.

3.16 TREE GUYING AND STAKING

- A.The Landscape Contractor shall be wholly responsible for assuring that all trees are planted in vertical and plumb position and remain so throughout the life of the contract and warranty period. Trees may or may not be staked and guyed depending upon the individual preference of the Contractor, except where specified by the Landscape Architect.
- B.Upright Staking and Tying: Use a minimum of 2 stakes of length required to penetrate at least 18 inches below bottom of backfilled excavation and to extend at least 54 inches above grade. Set stakes vertical and space to avoid penetrating root balls or masses. Support trees with strands of tie wire encased in hose sections at contact points with tree trunks. Allow enough slack to avoid rigid restraint of tree. Remove stakes and guys when trees are able to stand on their own.
- C.Guying and Staking: Guy and Stake trees exceeding 14 feet and more than 3 inch caliper unless otherwise indicated. Securely attach no fewer than 3 guys to stakes 30 inches long, driven to grade.

3.17 CLEANUP AND PROTECTION

- A.During landscape work, store materials and equipment where directed. Keep pavements clean and work areas and adjoining areas in an orderly condition.
- B.Protect landscape work and materials from damage due to landscape operations, operations by other contractors and trades, and trespassers. Maintain protection during installation, maintenance and warranty period. Treat, repair or replace damaged landscape work as directed by Landscape Architect.



DECIDUOUS TREES  
N.T.S.

LANDSCAPE PLAN FOR LOT 1 OF  
MELODY TOWN CENTER  
AURORA, ILLINOIS



Cedarwood  
Development

3200 WEST MARKET ST.  
FAIRLAWN, OHIO 44333  
P: 330-336-8971  
F: 330-336-4591

Laura Heiler  
VP of Senior Housing

Ron DiNunzio  
Director of Development



Karl T Krogstad

Illinois Registered Landscape Architect  
License No. 157-000349 - Expires 08/31/2021

KROGSTAD

LAND DESIGN LIMITED

LANDSCAPE ARCHITECTURE • CONSULTING  
519 PENBROOK CT. N. CRYSTAL LAKE, IL 60044  
P: 815-299-9511  
SKROGSTAD@LANDDESIGNLIMITED.COM

PROJECT # HEL1723

Date: 11/18/20

REVISIONS:

Rev: 12/17/20  
Rev: 2/18/21  
Rev: 3/23/21

DRAWN KTK

CHECKED KTK

SHEET NO.

6 of 6