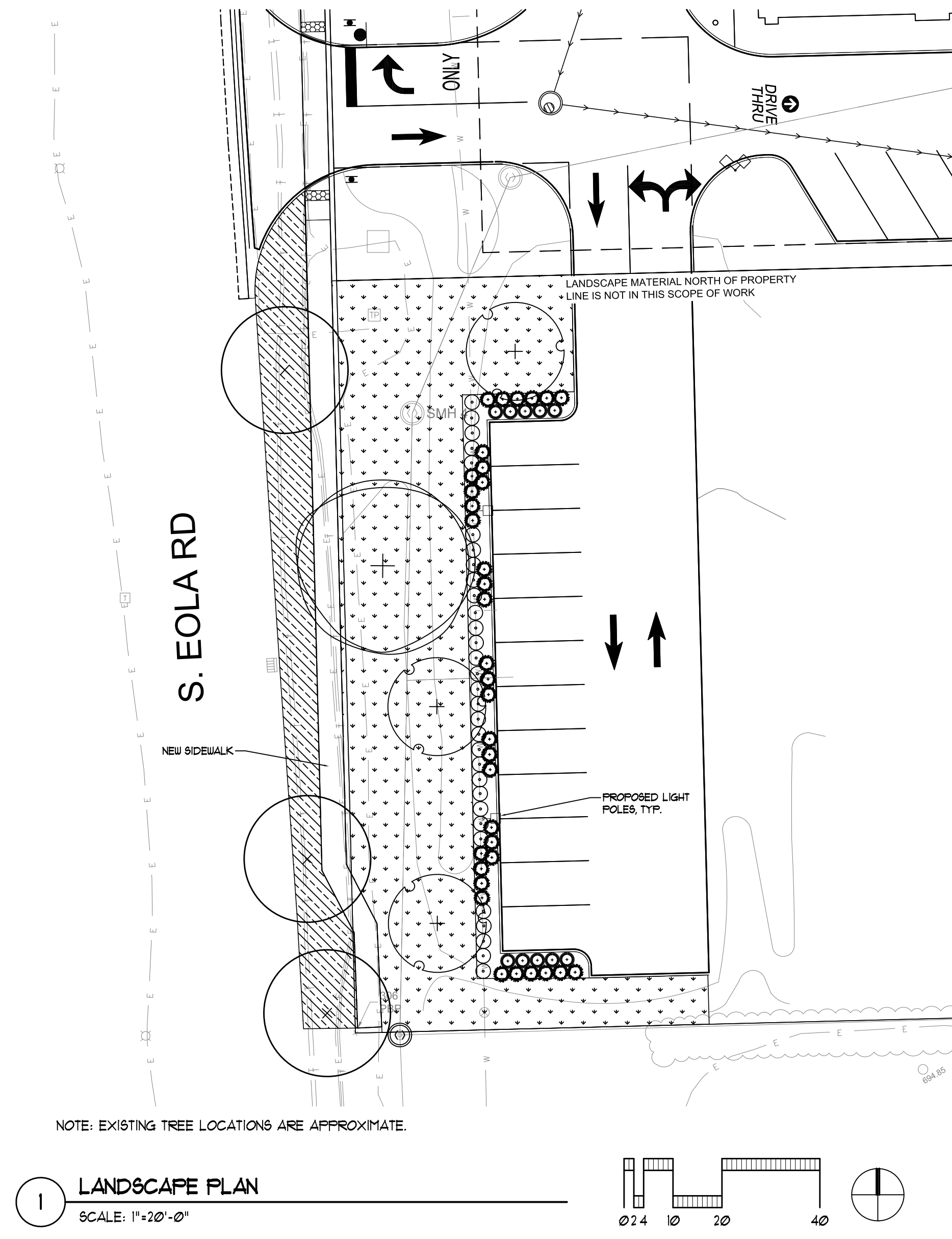
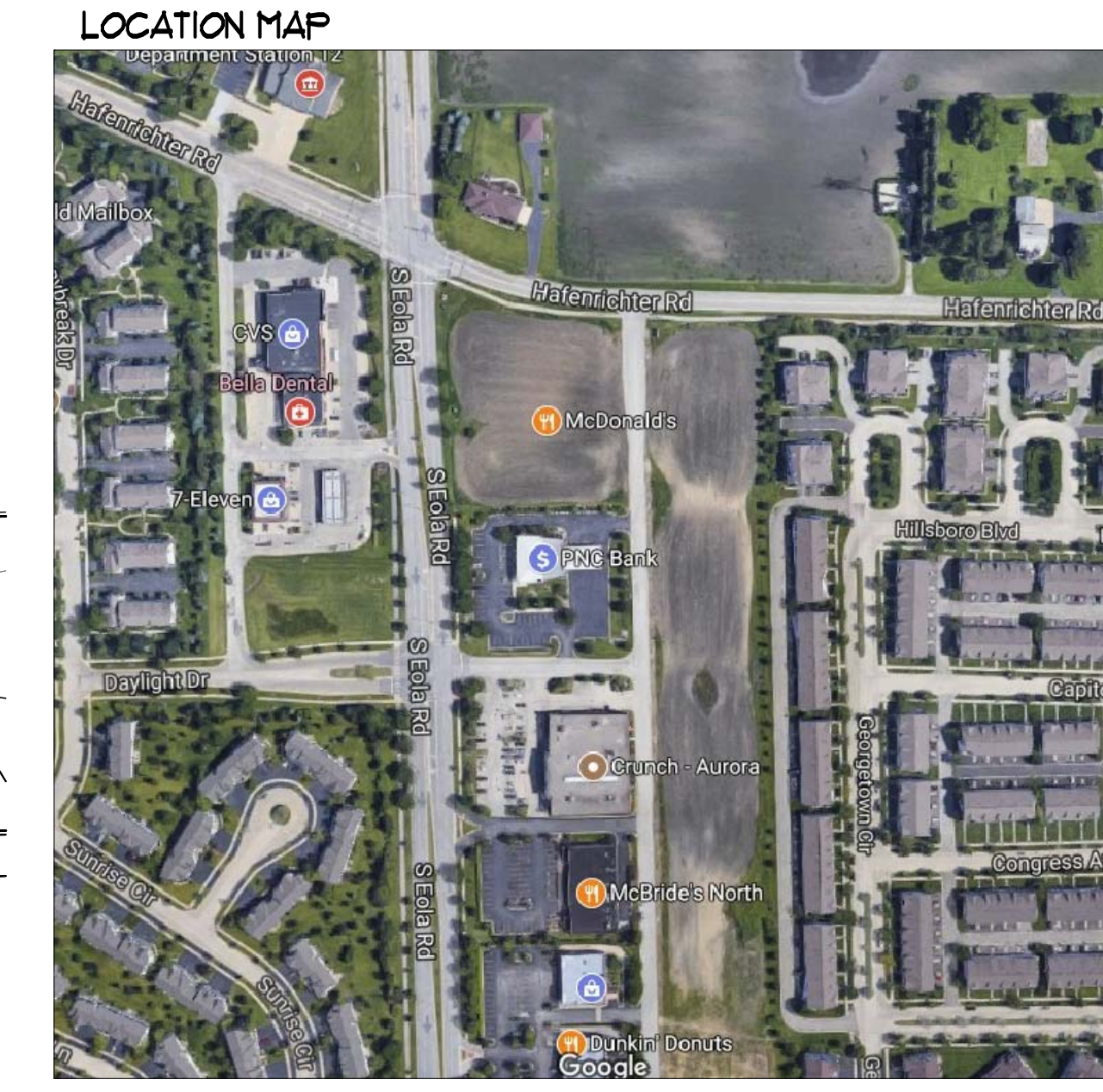


# LANDSCAPE PLAN FOR EOLA CROSSING, LOT 2 PARKING LOT

CANOPY TREES (MINIMUM SIZE 2.5 CALIPER) COUNT:	4
EVERGREEN TREES (MINIMUM SIZE 6 FEET) COUNT:	0
UNDERSTORY TREES (MINIMUM SIZE 2.5 CALIPER OR 6 FEET IF MULTI-STEMMED) COUNT:	3
EVERGREEN SHRUBS (MINIMUM OF 18 INCHES) COUNT:	32
DECIDUOUS SHRUBS (MINIMUM OF 18 INCHES) COUNT:	31
ORNAMENTAL GRASSES COUNT:	10
PERENNIALS COUNT:	0
ANNUALS COUNT:	0
GROUNDCOVER SQUARE FOOTAGE:	0
TURF (SEEDED) SQUARE FOOTAGE:	1,455
TURF (SOD) SQUARE FOOTAGE:	4,861
NATIVE PRAIRIE PLANTING SQUARE FOOTAGE:	0
NATIVE WETLAND PLANTING SQUARE FOOTAGE:	0



	CTE VALUE	COUNT PROVIDED	TOTAL CTE'S PROVIDED
CANOPY TREES	1	4	4
EVERGREEN TREES	3	0	0
UNDERSTORY TREES	3	3	1
DECIDUOUS SHRUBS	20	31	2
EVERGREEN SHRUBS	20	35	2
TOTAL:		73	9



DRAWN BY BJD	STD ISSUE DATE 01-30-17	REVIEWED BY AMU	DATE ISSUED 01-30-17	TITLE LANDSCAPE PLAN	SHEET NO. L-1.0 LANDSCAPE PLAN	DESCRIPTION MCDONALD'S - AURORA, IL LANDSCAPE PLAN FOR EOLA CROSSING, LOT 2 PARKING LOT	SITE NO. 012-2600	SITE ADDRESS 2230 SOUTH EOLA ROAD, AURORA, IL	PREPARED BY: V3 Companies 7325 James Avenue Woodridge, IL 60517 630.724.9200 phone 630.724.9202 fax www.v3co.com
									REVISIONS FOR CITY COMMENTS 3 9/11/17