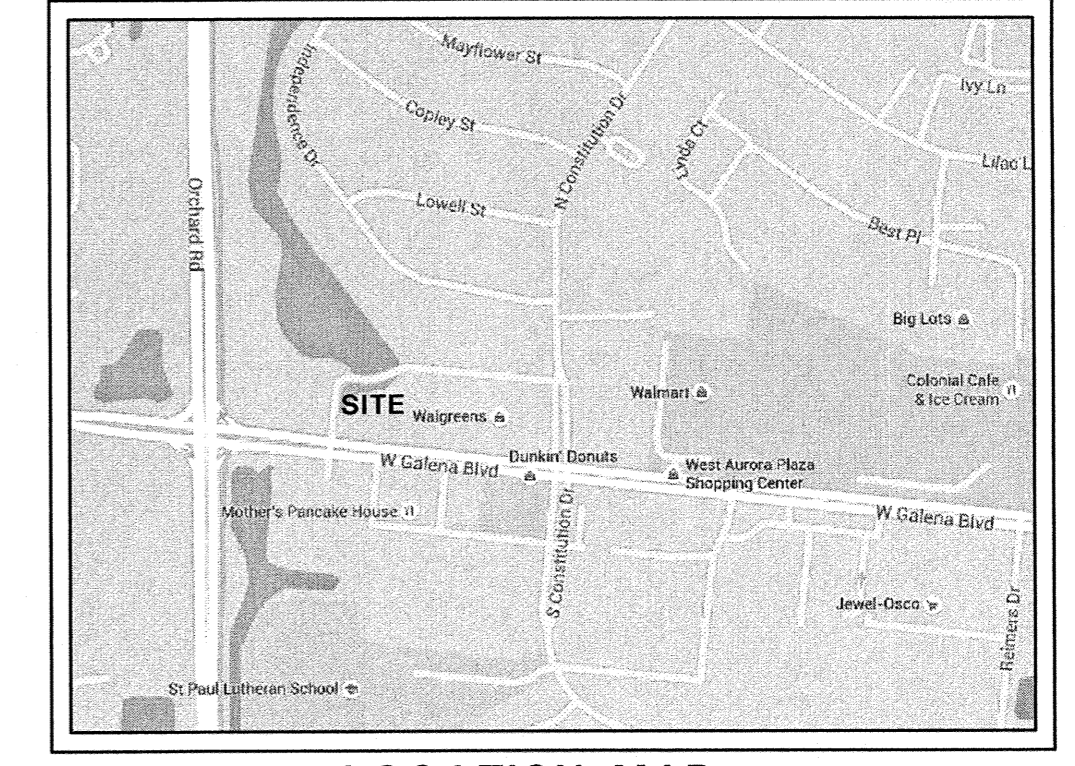


ALTA / ACSM LAND TITLE SURVEY

LOT 3 IN FINAL PLAT OF SUBDIVISION OF ORCHARD LAKE DEVELOPMENT—UNIT 1-A, BEING A RESUBDIVISION OF LOT 2 IN ORCHARD LAKE DEVELOPMENT UNIT 1, ACCORDING TO THE PLAT RECORDED MAY 16, 2008 AS DOCUMENT NUMBER 2008K042152, IN KANE COUNTY, ILLINOIS.



LOCATION MAP

NOTES:

- BENCHMARK #1 - CROSS CUT ON AUX. VALVE AT SOUTHWEST CORNER OF LOT 3. ELEVATION=676.96' (NAVD88)
- BENCHMARK #2 - CROSS CUT ON AUX. VALVE AT NORTHWEST CORNER OF LOT 3. ELEVATION=677.71' (NAVD88)
- PERMANENT INDEX NUMBER (P.I.N. #): 15-19-126-021
- THE LOCATION OF UNDERGROUND UTILITIES WAS DETERMINED BY FIELD OBSERVATION AND VISIBLE MARKINGS ONLY.
- PROPERTY AREA: 1.093 ACRES (47,599 SQUARE FEET)
- FIELD WORK COMPLETED ON 6/1/15
- SURVEY WAS PREPARED WITH THE AID OF A TITLE COMMITMENT PREPARED BY CHICAGO TITLE COMPANY, COMMITMENT NUMBER 15NNW144638EL, HAVING AN EFFECTIVE DATE OF MAY 19, 2015.
- SCHEDULE B EXCEPTIONS
 - SET-BACK LINE(S) AS SHOWN ON THE PLAT OF ORCHARD LAKE DEVELOPMENT - UNIT 1 RECORDED AS DOCUMENT NUMBER 2006K134918 AND AS DEPICTED ON THE PLAT OF ORCHARD LAKE DEVELOPMENT - UNIT 1A RECORDED AS DOCUMENT NUMBER 2008K042152. (AFFECTS THE SOUTH 20 FEET AND THE NORTHERLY 10 FEET OF LOT 3)
 - CITY EASEMENT, AND THE EASEMENT PROVISIONS AND GRANTEE(S) AS SET FORTH ON THE PLAT OF ORCHARD LAKE DEVELOPMENT - UNIT 1 RECORDED AS DOCUMENT NUMBER 2006K134918 AND AS DEPICTED ON THE PLAT OF ORCHARD LAKE DEVELOPMENT - UNIT 1A RECORDED AS DOCUMENT NUMBER 2008K042152. (AFFECTS THE SOUTH 20 FEET, THE WEST AND NORTHERLY 10 FEET OF LOT 3)
 - EASEMENT FOR STORMWATER CONTROL, AND THE EASEMENT PROVISIONS AND GRANTEE(S) AS SET FORTH ON THE PLAT OF ORCHARD LAKE DEVELOPMENT - UNIT 1 RECORDED AS DOCUMENT NUMBER 2006K134918. (SHOWN ON SURVEY)
 - SET-BACK LINE(S) AS SHOWN ON THE PLAT OF ORCHARD LAKE DEVELOPMENT - UNIT 1A RECORDED AS DOCUMENT NUMBER 2008K042152. (AFFECTS THE EAST 10 FEET OF LOT 3)
 - CITY EASEMENT, AND THE EASEMENT PROVISIONS AND GRANTEE(S) AS SET FORTH ON THE PLAT OF ORCHARD LAKE DEVELOPMENT - UNIT 1A RECORDED AS DOCUMENT NUMBER 2008K042152. (AFFECTS THE EAST 10 FEET AND THE NORTH 15 FEET OF THE SOUTH 35 FEET OF LOT 3)
- ACCORDING TO OUR INTERPOLATION OF THE FLOOD INSURANCE RATE MAP THIS SITE IS LISTED AS BEING IN A ZONE "X" DESCRIBED AS "AREAS DETERMINED TO BE OUTSIDE THE 0.2% ANNUAL CHANCE FLOODPLAIN" PER F.E.M.A. PANEL NO. 17089C0359H DATED AUGUST 3, 2009 AND LOMR-F CASE NO. 14-05-4683A DATED MAY 20, 2014.
- SURVEY PREPARED FOR: W-T CIVIL ENGINEERING, INC.
- THERE ARE NO BUILDINGS ON THE SURVEYED PROPERTY.
- THERE ARE A TOTAL OF 0 PARKING SPACES, OF WHICH 0 ARE RESERVED FOR HANDICAPPED USE.
- BASEIS OF BEARINGS IS TRUE NORTH BASED ON ILLINOIS STATE PLANE COORDINATE SYSTEM, ILLINOIS EAST 1201 ZONE.
- ANY DISCREPANCIES FOUND WITHIN THIS DOCUMENT NEED TO BE REPORTED TO THE SURVEYOR AS SOON AS POSSIBLE.
- PROPERTY IS ZONED B-2 BUSINESS DISTRICT - GENERAL RETAIL.

STATE OF ILLINOIS)
COUNTY OF COOK) SS
TO:

THIS IS TO CERTIFY THAT THIS MAP OR PLAT AND THE SURVEY ON WHICH IT IS BASED WERE MADE IN ACCORDANCE WITH THE 2011 MINIMUM STANDARD DETAIL REQUIREMENTS FOR ALTA/ACSM LAND TITLE SURVEYS, JOINTLY ESTABLISHED AND ADOPTED BY ALTA AND NSPS, AND INCLUDES ITEMS 2,3,4,5,6,7,8,9,11a,13 & 17 OF TABLE "A" THEREOF. THE FIELD WORK WAS COMPLETED ON JUNE 1st, 2015.

GIVEN UNDER MY HAND AND SEAL THIS 10th DAY OF JUNE A.D. 2015
AT HOFFMAN ESTATES, ILLINOIS.

Franjo I. Matijic
FRANJO I. MATIJIC
ILLINOIS PROFESSIONAL DESIGN FIRM LICENSE NO. 184-004387
STATE OF ILLINOIS

RM=676.73' (STORM)
24" CONCRETE STRUCTURE
INV=673.37' (12" RCP S)

RM=676.64' (STORM)
24" CONCRETE STRUCTURE
INV=673.42' (12" RCP E)

RM=676.05' (SANITARY)
60" CONCRETE STRUCTURE
INV=660.69' (15" METAL N)
INV=660.69' (24" METAL E/W)

RM=677.03' (SANITARY)
60" CONCRETE STRUCTURE
INV=661.55' (18" RCP E)
INV=662.23' (8" PVC SE)
INV=661.27' (24" RCP W)

RM=677.48' (WATER)
48" CONCRETE STRUCTURE
667.60' AT TOP OF 9" D.I.
WATERMAIN E/W

RM=677.58' (STORM)
60" CONCRETE STRUCTURE
INV=672.27' (30" RCP N)
INV=672.28' (21" RCP E)

RM=677.68' (STORM)
72" CONCRETE STRUCTURE
INV=671.80' (30" RCP N/S)
INV=672.18' (12" RCP W)

RM=676.70' (STORM)
24" CONCRETE STRUCTURE
INV=673.05' (12" RCP E/W)

RM=677.49' (STORM)
72" CONCRETE STRUCTURE
INV=670.17' (30" RCP N/S)
INV=672.39' (24" RCP E)

RM=678.01' (STORM)
60" CONCRETE STRUCTURE
INV=672.65' (24" RCP E/W)
INV=672.75' (15" RCP NW)

RM=677.67' (SANITARY)
60" CONCRETE STRUCTURE
INV=668.79' (8" PVC ENE/W)

RM=678.06' (STORM)
60" CONCRETE STRUCTURE
INV=673.10' (24" RCP NE/NW)

RM=676.74' (STORM)
48" CONCRETE STRUCTURE
INV=672.94' (12" RCP N)
INV=672.94' (15" RCP SE)

RM=676.58' (STORM)
84" CONCRETE STRUCTURE
INV=667.18' (48" RCP NW/E)
INV=669.43' (30" RCP S)

RM=677.47' (SANITARY)
60" CONCRETE STRUCTURE
INV=662.22' (8" PVC E)
INV=667.17' (8" PVC E)
INV=662.02' (15" RCP N/S)

RM=677.09' (WATER)
48" CONCRETE STRUCTURE
666.09' AT TOP OF 9" D.I.
WATERMAIN E/W

RM=678.45' (STORM)
94" CONCRETE STRUCTURE
INV=667.75' (48" RCP NE/W)

RM=678.54' (STORM)
84" CONCRETE STRUCTURE
INV=668.79' (48" RCP E/SW)

RM=678.99' (SANITARY)
48" CONCRETE STRUCTURE
INV=669.79' (8" PVC E/SW)

RM=679.57' (STORM)
60" CONCRETE STRUCTURE
INV=673.72' (21" RCP E)
INV=673.72' (24" RCP SW)

RM=678.19' (STORM)
60" CONCRETE STRUCTURE
INV=674.01' (21" RCP E/W)

RM=680.51' (SANITARY)
48" CONCRETE STRUCTURE
INV=665.11' (18" METAL E/W)

RM=680.78' (WATER)
48" CONCRETE STRUCTURE
674.38' AT TOP OF 9" D.I.
WATERMAIN E/W

RM=677.38' (STORM)
36" CONCRETE STRUCTURE
INV=674.21' (12" RCP S)

RM=675.44' (STORM)
24" CONCRETE STRUCTURE
INV=672.14' (12" RCP E)

RM=675.58' (STORM)
72" CONCRETE STRUCTURE
INV=670.81' (12" RCP N)
INV=668.01' (42" RCP E/W)

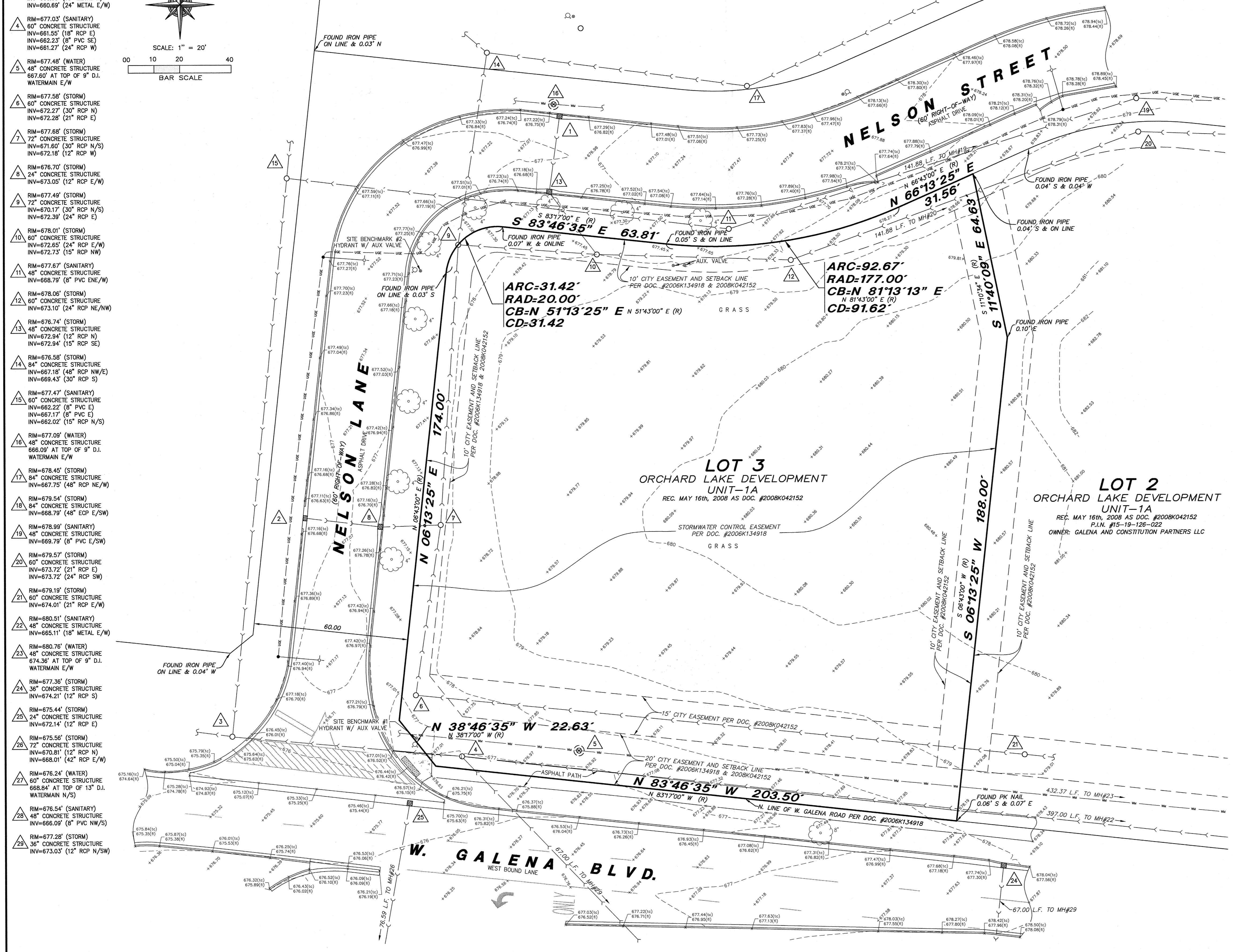
RM=676.24' (WATER)
60" CONCRETE STRUCTURE
668.84' AT TOP OF 13" D.I.
WATERMAIN N/S)

RM=676.54' (SANITARY)
48" CONCRETE STRUCTURE
INV=666.09' (8" PVC NW/S)

RM=677.28' (STORM)
36" CONCRETE STRUCTURE
INV=673.03' (12" RCP N/SW)



LEGEND	
—	PROPERTY LINE
- - -	CENTER LINE
- · - · -	EASEMENT LINE
- · - · -	BUILDING SETBACK
- · - · -	MEASURED DATA
(N)	RECORD DATA
(R)	TOP OF (CORNER, ETC)
XXXX	SPOT GRADE
XXXX	BOTTOM OF (DRAIN, GUTTER, ETC)
□	CONCRETE
○	EVERGREEN/DECIDUOUS
○	SHRUB/SHRUB LINE
○	MONITOR WELL
○	GAS VALVE
○	TYPICAL SIGN
○	FLARED END SECTION
○	CLOSED MANHOLE
○	OPEN GRATE MANHOLE
○	BEEHIVE GRATE MANHOLE
○	GUTTER FRAME
○	VALVE VAULT
○	FIRE HYDRANT
○	B-BOX / SERVICE VALVE
○	POST LIGHT/GROUND LIGHT
○	AREA LIGHT
○	STREET LIGHT
○	TRAFFIC SIGNAL
○	MAST ARM SIGNAL
○	HANDHOLE (electric/traffic)
○	GAS METER
○	ELECTRIC METER
○	PEDISTAL (tele, elec, cable)
○	UTILITY POLE
○	TELEPHONE VAULT
○	GUARDRAIL
○	QUI WIRE ANCHOR
○	CONTOUR LINE
○	TREE LINE / HEDGE LINE
○	EDGE GRAVEL/STONE
○	FENCE LINE
○	STORM SEWER
○	SANITARY SEWER
○	COMBO SEWER
○	WATER SERVICE LINE
○	WATERMAIN
○	OVERHEAD LINE
○	FIBER OPTIC LINE
○	GAS LINE
○	U.S. TELECO LINE
○	U.G. ELECTRIC LINE



BY: _____ DATE: _____

REVISIONS: _____

W-T LAND SURVEYING, INC.
LAND AND CONSTRUCTION SURVEYORS
2075 Palms Avenue
Naperville, IL 60563
PH: (224) 393-8338 FAX: (224) 293-4444
www.wtland.com
ILL. License No.: 184-004387 Exp: 04/30/16
COPYRIGHT © 2015 W-T LAND SURVEYING, INC.

W-T

LOT 3
ORCHARD LAKE DEVELOPMENT—UNIT 1A
GALENA BLVD & NELSON LANE
AURORA, ILLINOIS

ALTA / ACSM
LAND TITLE SURVEY

SCALE: 1"=20'
DRAWN: REM
BOUNDARY: MWO
FIELD WORK: MWS
CHECK: FIM
JOB: S15258
SHEET
OF ONE SHEETS