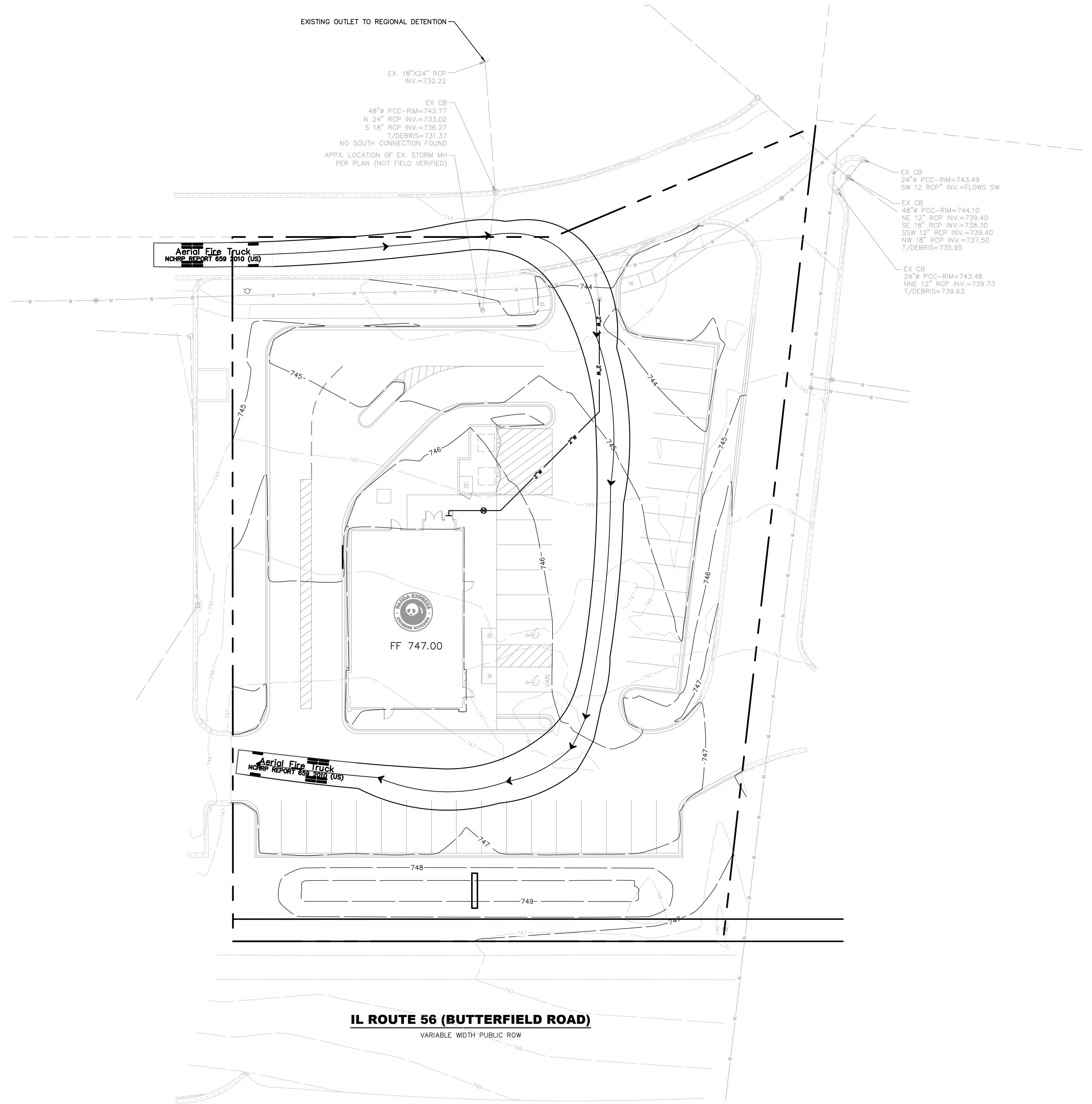


FIRE ACCESS PLAN FOR LOT 8 OF SAVANNAH CROSSING SUBDIVISION

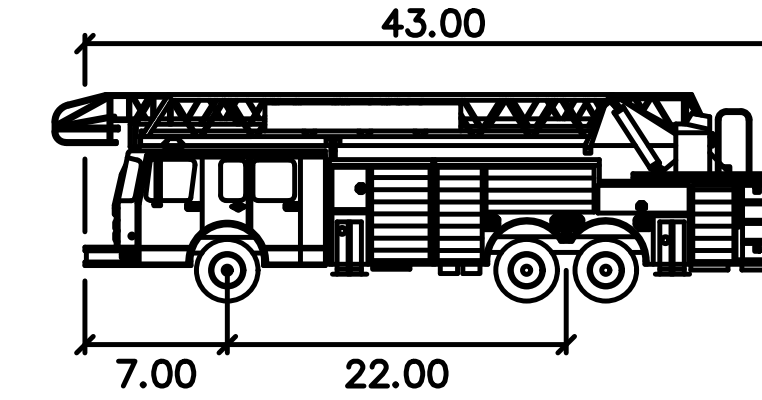


LEGEND

- PROPERTY LINE
- - - 500 PROPOSED CONTOUR
- - - 500 EXISTING CONTOUR
- - - PROPOSED STORM SEWER
- - - EXISTING STORM SEWER
- EXISTING / PROPOSED MANHOLE
- EXISTING / PROPOSED CATCH BASIN

NOTES

- REFER TO SURVEY FOR BENCHMARK(S).
- FOR ADDITIONAL INFORMATION REFERENCE THE STANDARD NOTES SHEET, STANDARD DETAILS SHEET(S), AND ANY MUNICIPALITY AND/OR JURISDICTIONAL DETAILS ATTACHED TO THIS PLAN SET.
- ALL ELEVATIONS SHOWN ARE TOP OF PAVEMENT/FINISH GRADE UNLESS OTHERWISE NOTED.
- PROPOSED ELEVATIONS FOR STRUCTURES ARE:
 HYDRANT = BASE FLANGE
 VALVE/MANHOLE/CLEANOUT = RIM
 CATCH BASIN/INLET = RIM/FLOW LINE

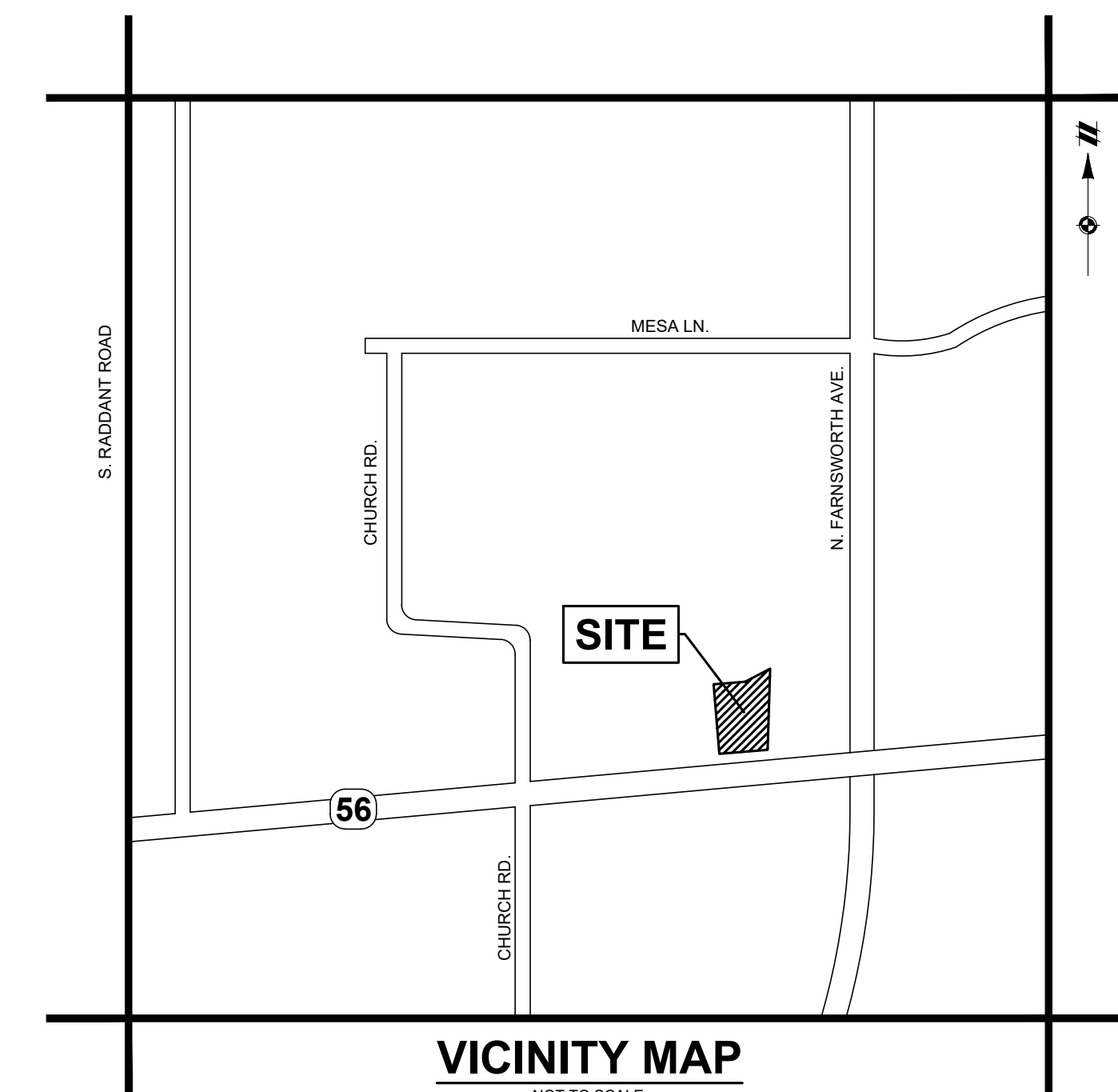


Aerial Fire Truck

	feet
Width	: 8.50
Track	: 8.50
Lock to Lock Time	: 6.0
Steering Angle	: 33.3

Fire Access Plan Data Table

Description	Value	Unit
a) Building Height	23.25	feet
b) Building Square Footage (typical)	2,300	square feet
c) Building fire suppression information including any proposed use of sprinkler systems, fire alarm systems, whether fire extinguishers are needed: 0		
d) General description of business to be conducted within each building including: will there be rack storage in the building, will there be storage of combustible materials over twelve feet in height, clearance of sprinkler heads and stored materials (18 inch minimum): Restaurant with drive-thru		



VICINITY MAP

NOT TO SCALE

NOT FOR CONSTRUCTION



PANDA RESTAURANT GROUP INC.
 1683 Walnut Grove Ave.
 Rosemead, California
 91770
 Telephone: 626.799.9898
 Facsimile: 626.372.8288

All ideas, designs, arrangement and plans indicated or represented by this drawing are the property of Panda Express Inc. and were created for use on this specific project. None of these ideas, designs, arrangements or plans may be used by or disclosed to any person, firm, or corporation without the written permission of Panda Express Inc.

REVISIONS:

NO.	DESCRIPTION

ISSUE DATE:

DRAWN BY: EM

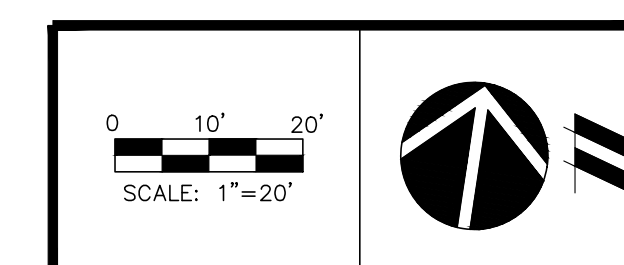
PANDA PROJECT #: D33024
 PANDA STORE #:
 ENGR PROJECT #: 24001077



PANDA EXPRESS
 TRUE WARM & WELCOME
 BUTTERFIELD ROAD
 AURORA, IL
 FINAL PLAN FOR LOT 8 OF
 SAVANNAH CROSSING

C02

PRELIMINARY
 GRADING &
 STORMWATER PLAN



SCALE: 1"=20'