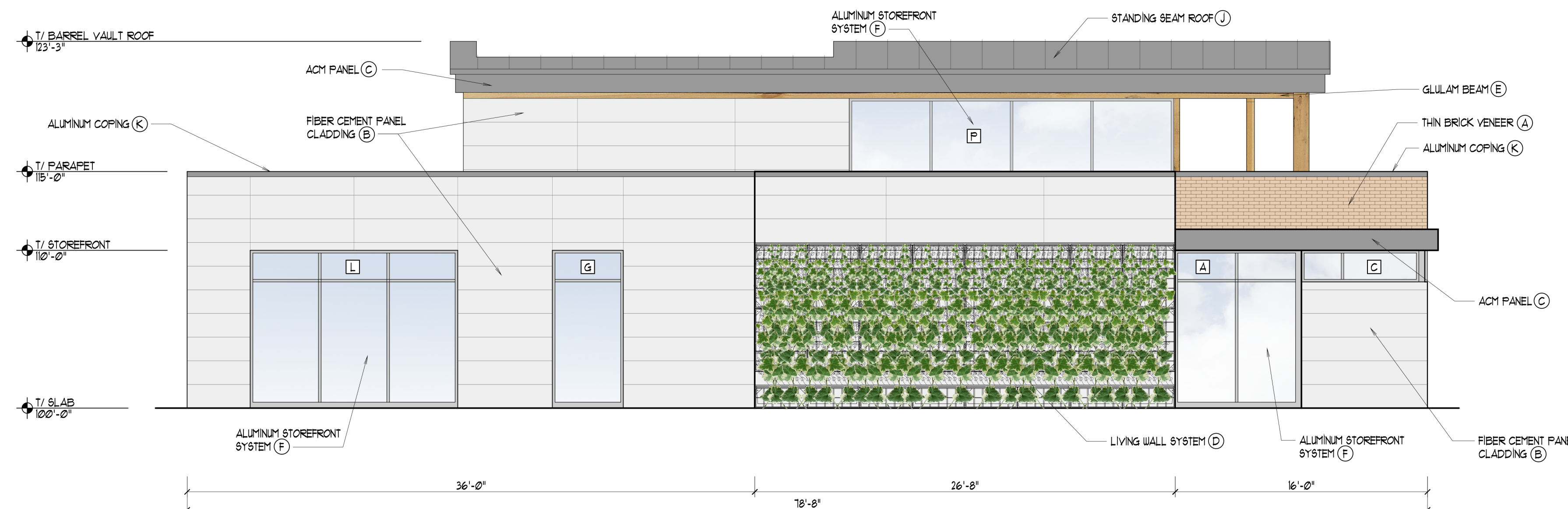


# BUILDING & SIGN ELEVATIONS

EXTERIOR MATERIAL LEGEND										
SYMBOL	(A)	(B)	(C)	(D)	(E)	(F)	(G)	(H)	(J)	(K)
MATERIAL	THIN BRICK VENEER	18"x10" FIBER CEMENT PANEL CLADDING	PRE-FINISHED ALUMINUM COMPOSITE MATERIAL (ACM) PANEL - ROUT 4 RETURN	LIVING WALL SYSTEM	STRUCTURAL GLULAM POST/BEAM	ALUMINUM FRAMED STOREFRONT AND INSULATED GLAZING SYSTEM	ALUMINUM FRAMED STOREFRONT DOOR AND INSULATED GLAZING SYSTEM	INSULATED AND GALVANIZED HOLLOW METAL DOOR AND FRAME, FOR PAINT	PRE-FINISHED STANDING SEAM METAL ROOFING	PRE-FINISHED ALUMINUM COPING
MANUFACTURE	ENDICOTT THIN BRICK & TILE, LLC	NICHHA	CITADEL ARCH. PRODUCTS	LIVE WALL	TBD	KAUNEER "TRFAB VERSAGLAZE48IT" LINETEC 4 VITRO ARCHITECTURAL GLASS	KAUNEER "180" OR APPROVED EQUAL LINETEC 4 VITRO ARCHITECTURAL GLASS	TBD	FIRESTONE BUILDING PRODUCTS, UNA-CLAD UC-6"	FIRESTONE BUILDING PRODUCTS, UNA-CLAD UC-6"
COLOR	IVORY BLEND VELOUR THIN BRICK	MATCH SW PURE WHITE (SW 1000S)	SLATE GREY - STANDARD KYNAR 500 ENVELOPE 2000 SERIES	TBD	TBD	CLEAR - STOREFRONT SOLARBAN 60 (CLEAR OUTDOOR LITE) + CLEAR (INDOOR LITE)	CLEAR - STOREFRONT SOLARBAN 60 (CLEAR OUTDOOR LITE) + CLEAR (INDOOR LITE)	TBD	SLATE GRAY KYNAR 500 - FLUOROCARBON	SLATE GRAY KYNAR 500 - FLUOROCARBON
CONTACT	ILLINOIS BRICK CO. SAM BORCE PH: 708-912-8578	NICHHA JOHN BURGESS PH: 630-364-6507	NICHHA JOHN BURGESS PH: 630-364-6507	LORI MAY PH: 616-935-1886					FIRESTONE PH: 763-516-9595	FIRESTONE PH: 763-516-9595



**1 EAST ELEVATION**  
SCALE: 3/16" = 1'-0"



**2 SOUTH ELEVATION**  
SCALE: 3/16" = 1'-0"

Elevation Data Table: Elevations		
Description	Value	Unit
a) Building Height in feet (typical)	23.50	feet
b) Total Building Square Footage (typical)	5,949.00	Square Feet
c) First Floor Building Square Footage (typical)	5,949.00	Square Feet
d) Number of building stories (typical)	1.00	Square Feet
e) Exterior Material List (including colors) for all buildings and accessory structures: Face brick: Tan; Fiber cement panels: White; Aluminum composite material (ACM) panels: Silver; Store		

Percentage of each facade covered in brick:  
North Elevation - 12%, South Elevation - 4%, East Elevation - 30% West Elevation - 0%

Elevation Data Table: Ground Signage				
Ground Sign #	Description	Value	Unit	
1	i) Length of street frontage - on which Sign is Located	226	Feet	
	ii) Width of Sign Face	9.33	Feet	
	iii) Height of Sign Face	3.58	Feet	
	iv) Square Footage of Sign Face	33	Square Feet	
	v) Height of Sign (overall)	7	Feet	
	vi) Width of Sign (overall)	11	Feet	
	vii) Type of Sign	Aluminum channel letters		
	viii) Type of Sign Base	Thin brick, cast stone and fiber cement		
	ix) Is there a Digital Display		No	
	If Yes then, Location of Digital Display on the sign			
	Height of Digital Display	Feet		
	Width of Digital Display	Feet		
	Square Footage of Digital Display	Square Feet		
	Percent of Digital Display Sign Coverage	Percent		

Elevation Data Table: Wall Signage			
Wall Sign #	Description	Value	Unit
1	i) Width of Façade - on which Sign is Located	116.00	Feet
	ii) Height of Façade - on which Sign is Located	15.00	Feet
	iii) Square Footage of Façade - on which Sign is Located	1,740.00	Square Feet
	iv) Width of Sign Face	9.50	Feet
	v) Height of Sign Face	3.50	Feet
	vi) Square Footage of Sign Face	33.25	Square Feet
	vii) Percent of Sign Coverage - Façade on which Sign is Located	2%	Percent



Charles Vincent George  
ARCHITECTS

1245 E. Diehl Rd. Suite 101  
Naperville, Illinois 60563  
P | 630.357.2023 F | 630.357.2662  
cvgarchitects.com

STAMP:  
PRELIMINARY NOT FOR CONSTRUCTION

EXPIRES 11/30/2018  
IL ARCHITECTURAL DESIGN FIRM NO: 184-000544  
DATE:

**COPYRIGHT:**  
THE ATTACHED DRAWINGS ARE COPYRIGHTED AND ARE FOR INFORMATIONAL PURPOSES ONLY. CHARLES VINCENT GEORGE ARCHITECTS, INC. HAS NO MEANS OF ENSURING THAT THE DRAWINGS WILL NOT, OR HAVE NOT BEEN AFFECTED BY ANY FILE CONVERSION OR PRINTING PROCESS AND CANNOT THEREFORE BE RESPONSIBLE FOR THEIR CONTENTS. IF THE DRAWINGS ARE TO BE USED BY A THIRD PARTY FOR ANY PURPOSE, THE THIRD PARTY SHALL BE WHOLLY RESPONSIBLE FOR ENSURING THE ACCURACY OF THE INFORMATION CONTAINED THEREIN. ALL UNAUTHORIZED PRINTING AND/OR DISTRIBUTION IS STRICTLY PROHIBITED WITHOUT PRIOR WRITTEN CONSENT FROM CHARLES VINCENT GEORGE ARCHITECTS, INC.

ISSUE AND/OR REVISIONS:		
NO.	DATE	DESCRIPTION
	07/03/2018	GMP

PROJECT:

NEW GROUND-UP CONSTRUCTION  
**WATERLEAF**  
3055 E NEW YORK ST  
AURORA, IL

TITLE:  
ELEVATIONS

DATE: 06/18/18 PROJECT # 2018-018

PRINCIPAL: BFG SHEET:

PROJECT MGR: JRT DRAWN BY: JWN  
A3.1

DATE PLOTTED: 06/18/2018 10:00:00 AM PLOTTER: HP DesignJet T1100E

# BUILDING ELEVATIONS

EXTERIOR MATERIAL LEGEND										
SYMBOL	(A)	(B)	(C)	(D)	(E)	(F)	(G)	(H)	(J)	(K)
MATERIAL	THIN BRICK VENEER	18"x24" FIBER CEMENT PANEL CLADDING	PRE-FINISHED ALUMINUM COMPOSITE MATERIAL (ACM) PANEL - ROUT 4 RETURN	LIVING WALL SYSTEM	STRUCTURAL GLULAM POST/BEAM	ALUMINUM FRAMED STOREFRONT AND INSULATED GLAZING SYSTEM	ALUMINUM FRAMED STOREFRONT DOOR AND INSULATED GLAZING SYSTEM	INSULATED AND GALVANIZED HOLLOW METAL DOOR AND FRAME, FOR PAINT	PRE-FINISHED STANDING SEAM METAL ROOFING	PRE-FINISHED ALUMINUM COPING
MANUFACTURE	ENDICOTT THIN BRICK & TILE, LLC	NICHAH	CITADEL ARCH. PRODUCTS	LIVE WALL	TBD	KAUKEER "TRFAB VERSAGLAZE-4811" LINETEC 4 VITRO ARCHITECTURAL GLASS	KAUKEER "180" OR APPROVED EQUAL LINETEC 4 VITRO ARCHITECTURAL GLASS	TBD	FIRESTONE BUILDING PRODUCTS, UNA-CLAD UC-6"	FIRESTONE BUILDING PRODUCTS, UNA-CLAD UC-6"
COLOR	IVORY BLEND VELOUR THIN BRICK	MATCH SW PURE WHITE (SW 1005)	SLATE GREY - STANDARD KYNAR 500 ENVELOPE 2000 SERIES	TBD	TBD	CLEAR - STOREFRONT SOLARBAN 60 (CLEAR OUTDOOR LITE) + CLEAR (INDOOR LITE)	CLEAR - STOREFRONT SOLARBAN 60 (CLEAR OUTDOOR LITE) + CLEAR (INDOOR LITE)	TBD	SLATE GRAY KYNAR 500 - FLUOROCARBON	SLATE GRAY KYNAR 500 - FLUOROCARBON
CONTACT	ILLINOIS BRICK CO. SAM BORCE PH: 708-912-8578	NICHAH JOHN BURGESS PH: 630-364-6507	NICHAH JOHN BURGESS PH: 630-364-6507	LORI MAY PH: 616-935-1986					FIRESTONE PH: 763-516-9595	FIRESTONE PH: 763-516-9595



charles vincent george  
ARCHITECTS

1245 E. Diehl Rd. Suite 101  
Naperville, Illinois 60563  
P | 630.357.2023 F | 630.357.2662  
cvgarchitects.com

STAMP:  
PRELIMINARY NOT FOR CONSTRUCTION

EXPIRES 11/30/2018  
IL ARCHITECTURAL DESIGN FIRM NO: 184-000544  
DATE:

**COPYRIGHT:**  
THE ATTACHED DRAWINGS ARE COPYRIGHTED AND ARE FOR INFORMATIONAL PURPOSES ONLY. CHARLES VINCENT GEORGE ARCHITECTS, INC. HAS NO MEANS OF ENSURING THAT THE DRAWINGS WILL NOT, OR HAVE NOT BEEN AFFECTED BY ANY FILE CONVERSION OR PRINTING PROCESS AND CANNOT THEREFORE BE RESPONSIBLE FOR THEIR CONTENTS. IF THE DRAWINGS ARE TO BE USED BY A THIRD PARTY FOR ANY PURPOSE, THE THIRD PARTY SHALL BE WHOLLY RESPONSIBLE FOR ENSURING THE ACCURACY OF THE INFORMATION CONTAINED THEREIN. ALL UNAUTHORIZED PRINTING AND/OR DISTRIBUTION IS STRICTLY PROHIBITED WITHOUT PRIOR WRITTEN CONSENT FROM CHARLES VINCENT GEORGE ARCHITECTS, INC.

**ISSUE AND/OR REVISIONS:**

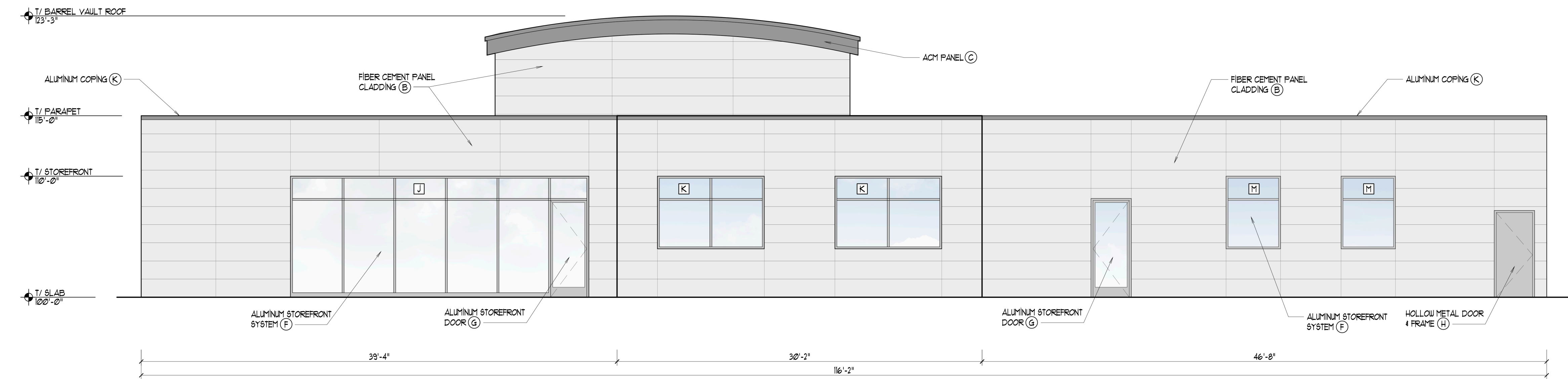
NO.	DATE	DESCRIPTION
	07/03/2018	GMP

PROJECT:

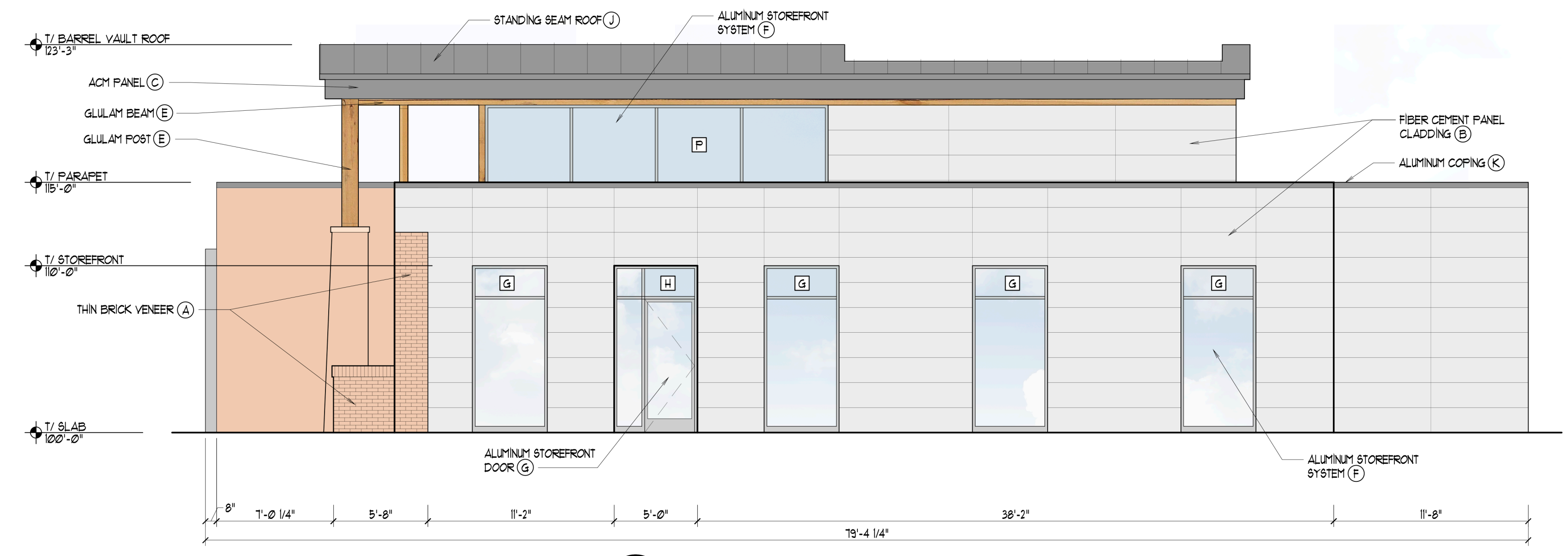
NEW GROUND-UP CONSTRUCTION  
**WATERLEAF**  
3055 E NEW YORK ST  
AURORA, IL

TITLE:  
ELEVATIONS

DATE: 06/18/18	PROJECT # 2018-018
PRINCIPAL: BFG	SHEET: A3.2
PROJECT MGR: JRT	DRAWN BY: JWN
DRAWING FILE PATH: M:\2018-018\DRAWINGS\A3.2 ELEVATIONS_18018	

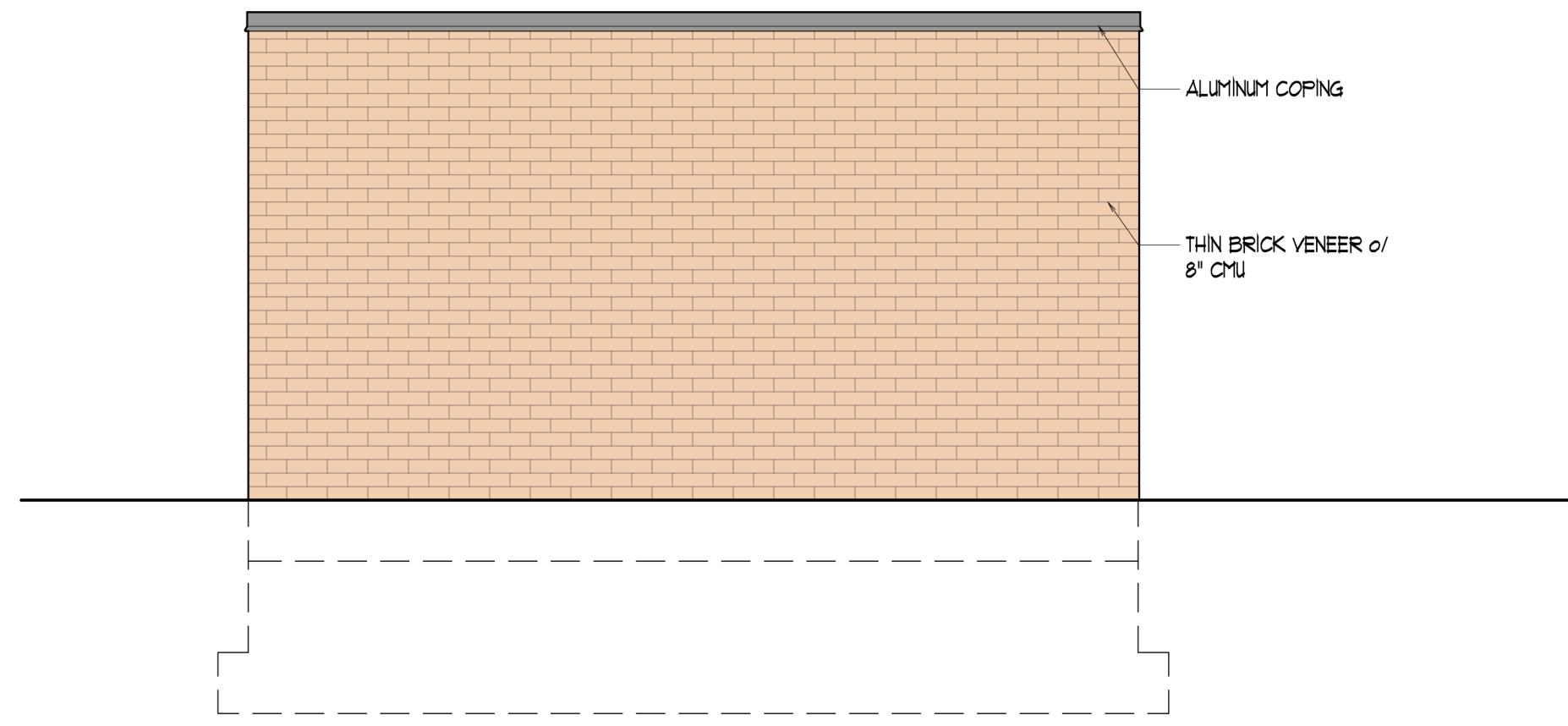


**3 WEST ELEVATION**  
SCALE: 3/16" = 1'-0"  
0' 1' 2' 4' 8' 16'

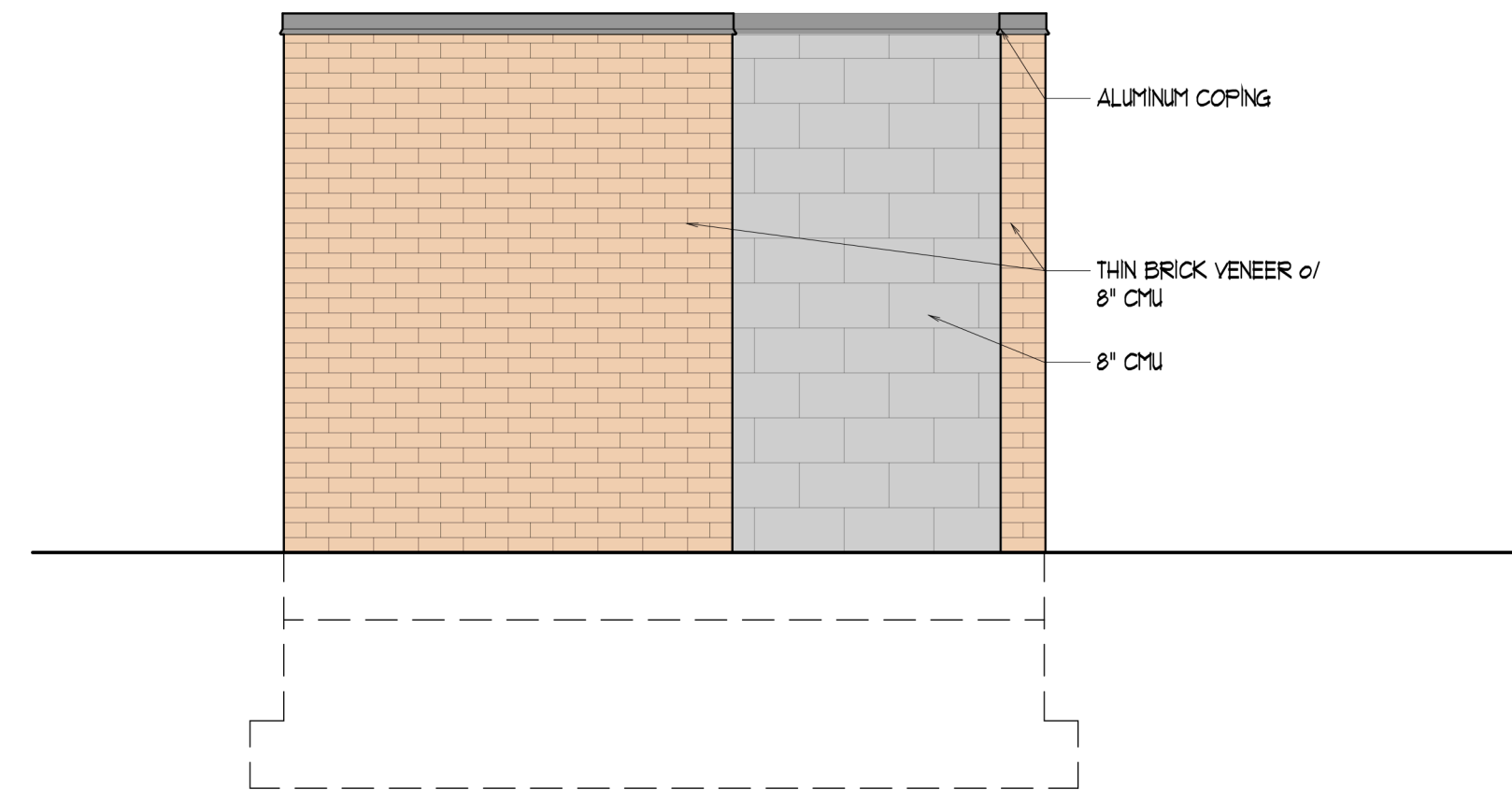


**4 NORTH ELEVATION**  
SCALE: 3/16" = 1'-0"  
0' 1' 2' 4' 8' 16'

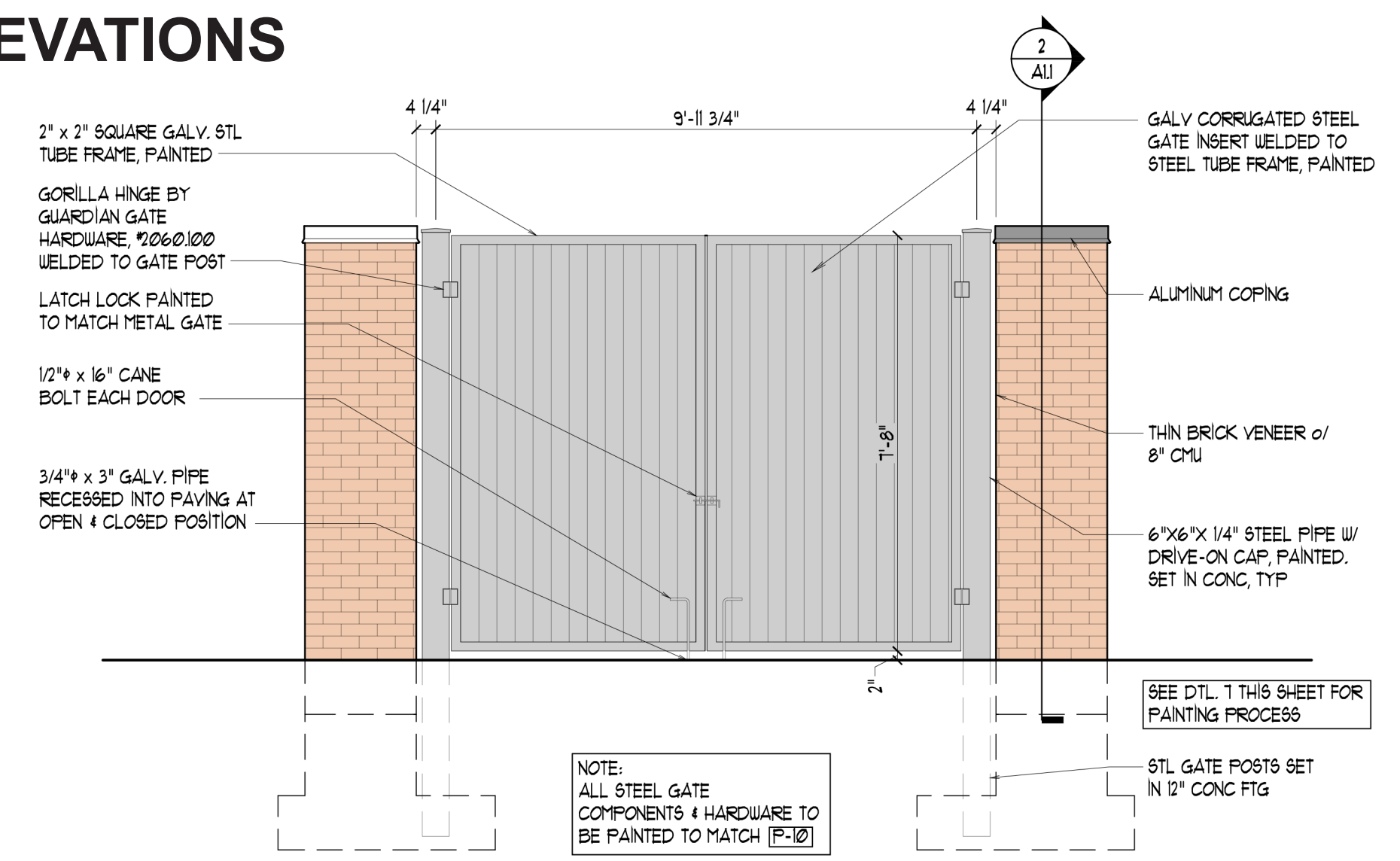
# MONUMENT SIGN, DIRECTIONAL SIGN & TRASH ENCLOSURE ELEVATIONS



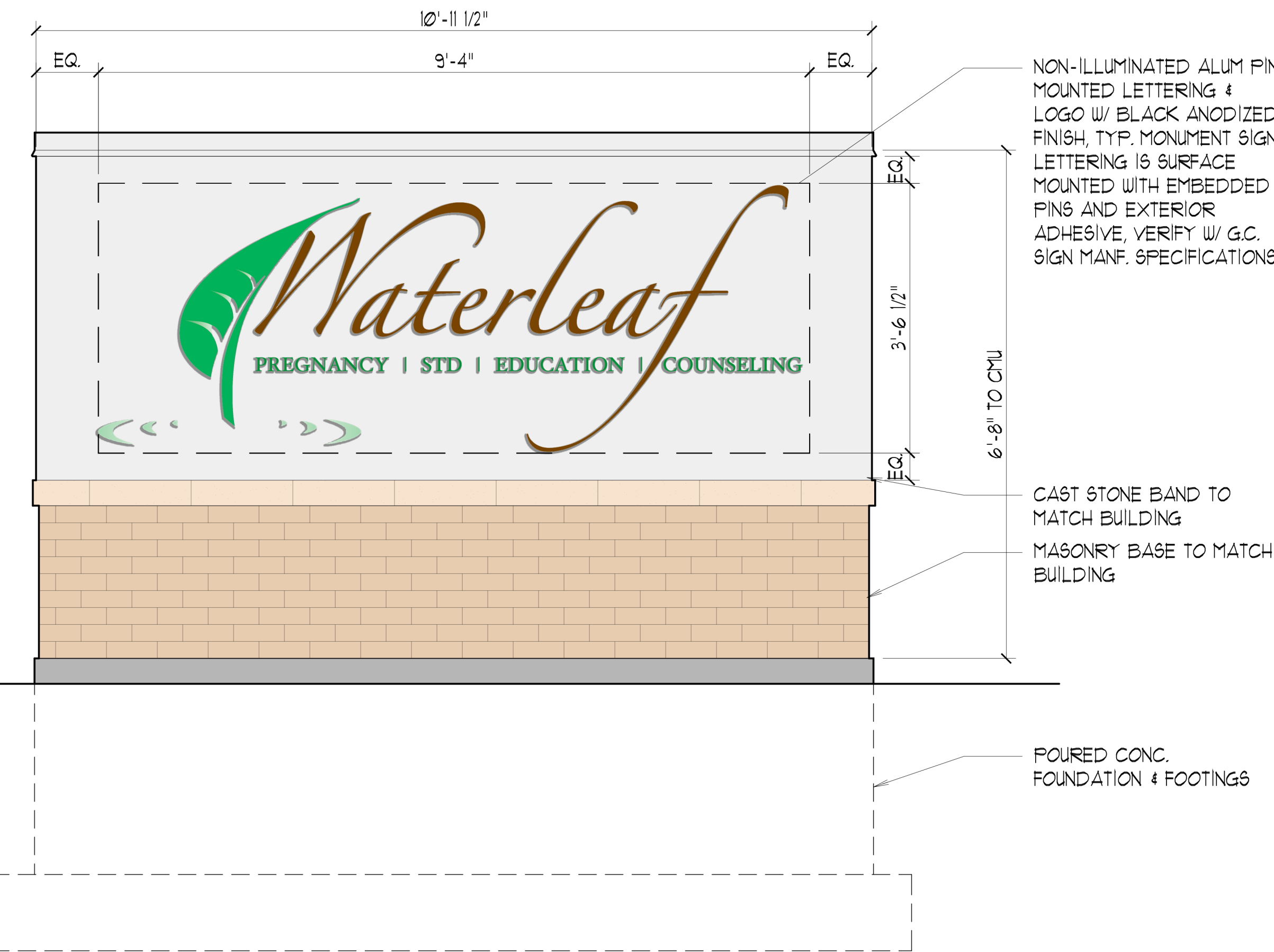
**C REAR ELEVATION - TRASH ENCLOSURE**  
SCALE: 3/8" = 1'-0"



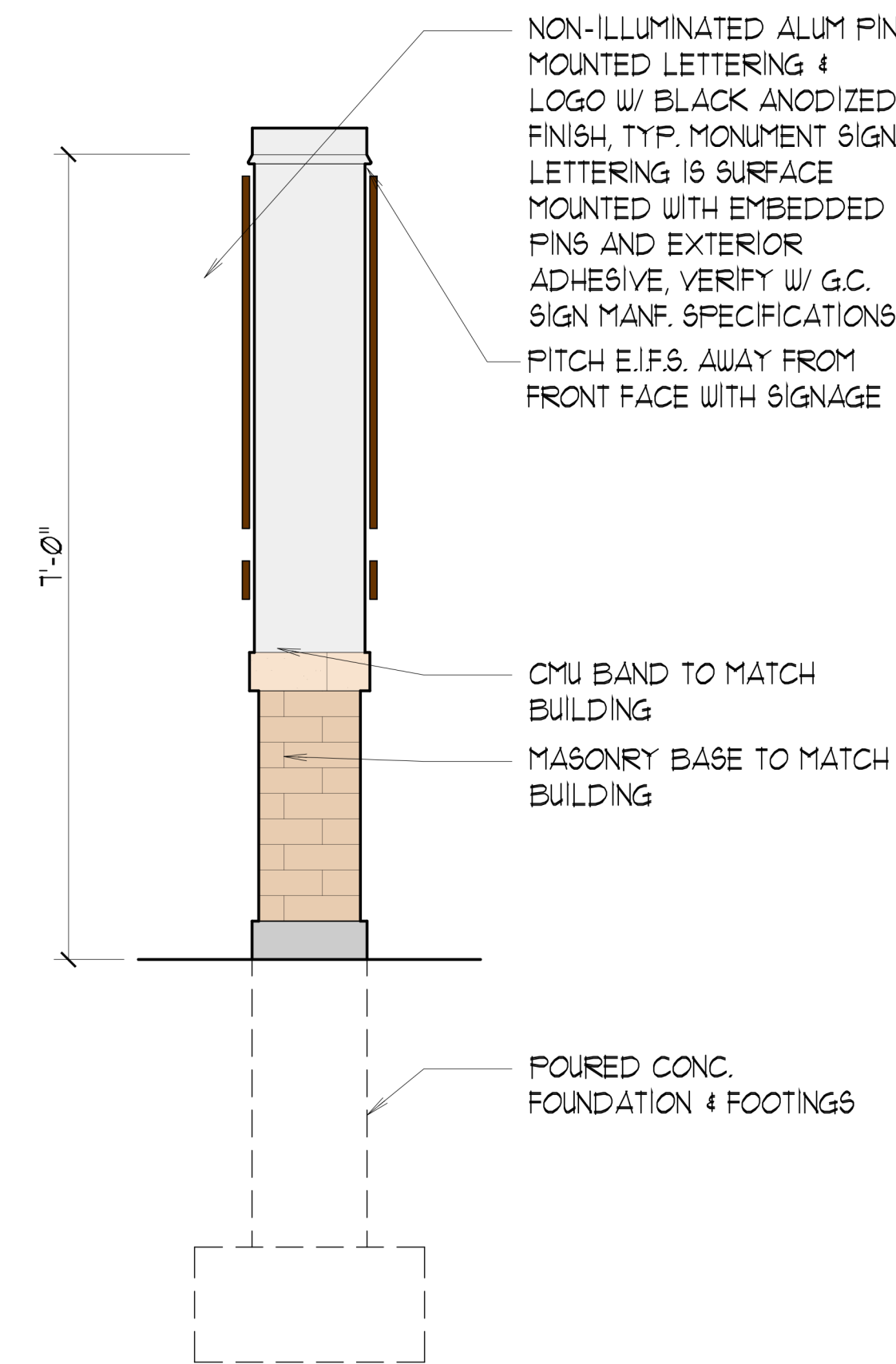
**B SIDE ELEVATION - TRASH ENCLOSURE**  
SCALE: 3/8" = 1'-0"



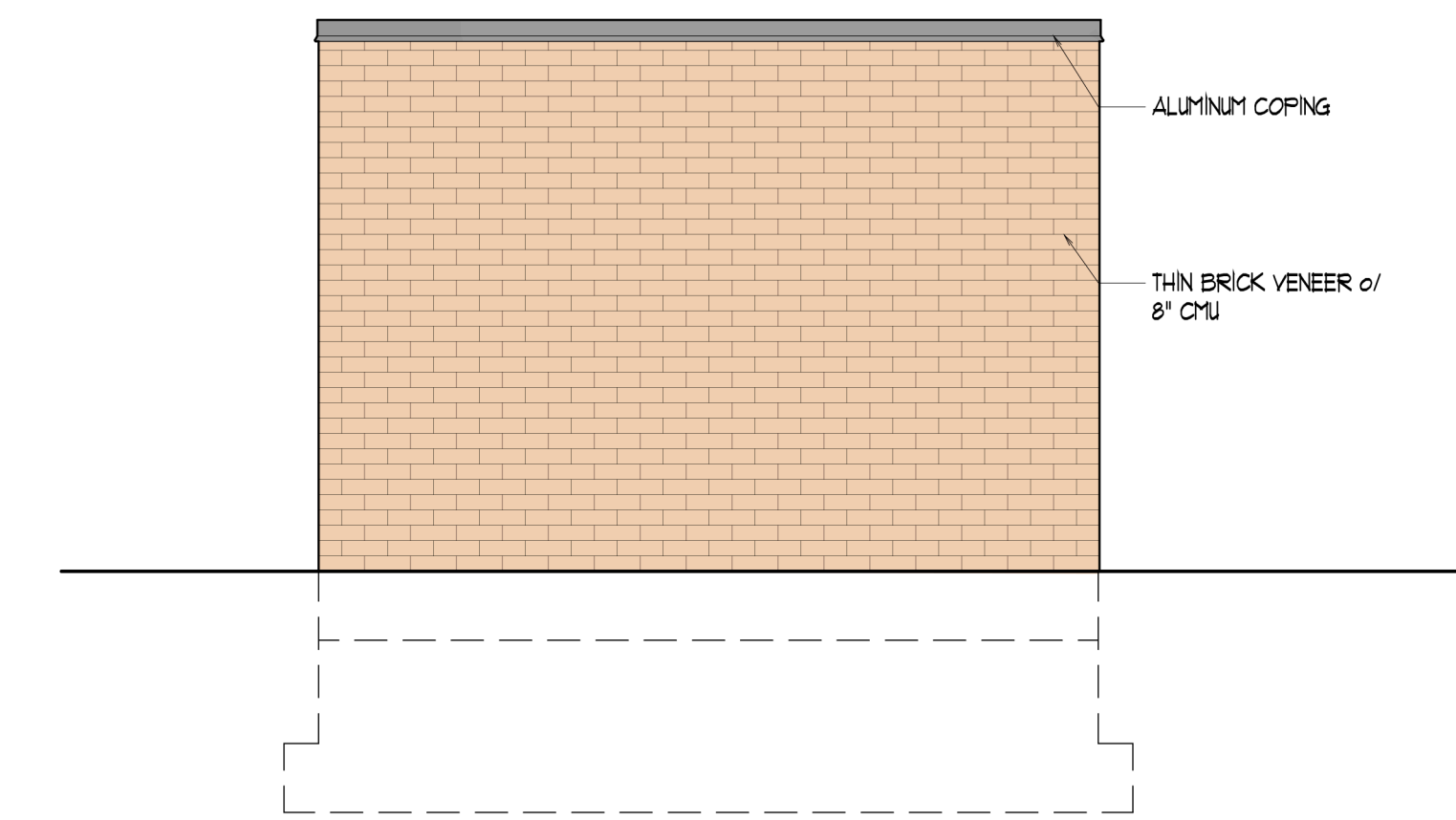
**A FRONT ELEVATION - TRASH ENCLOSURE**  
SCALE: 3/8" = 1'-0"



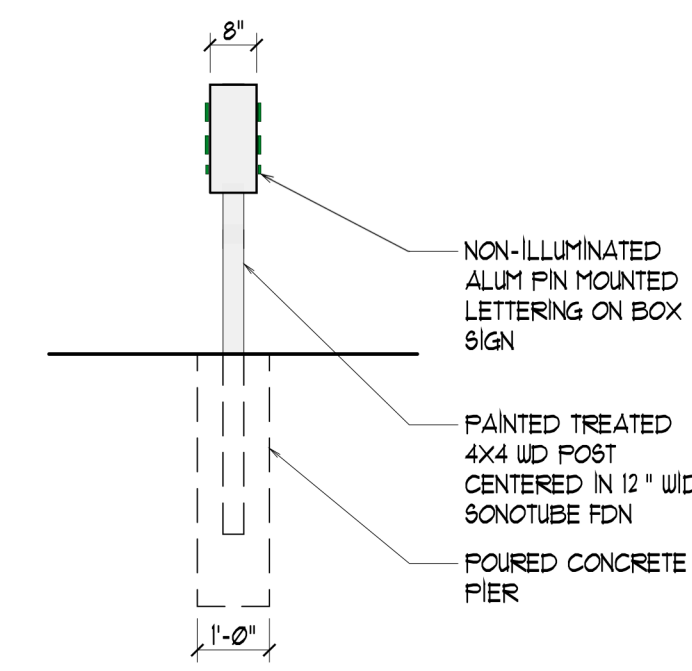
**A MONUMENT SIGN ELEVATION**  
SCALE: 3/4" = 1'-0"  
NOTE: FINAL MONUMENT SIGN LOCATIONS PER CIVIL



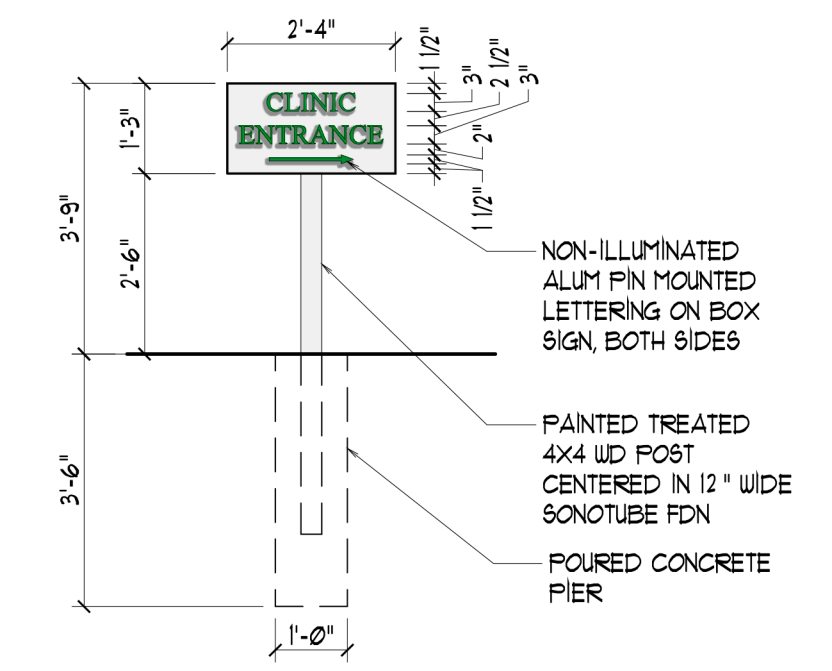
**B MONUMENT SIGN ELEVATION**  
SCALE: 3/4" = 1'-0"  
NOTE: FINAL MONUMENT SIGN LOCATIONS PER CIVIL



**D SIDE ELEVATION - TRASH ENCLOSURE**  
SCALE: 3/8" = 1'-0"



**F WAY FINDING SIGN SIDE ELEVATION**  
SCALE: 3/8" = 1'-0"



**E WAY FINDING SIGN SIDE ELEVATION**  
SCALE: 3/8" = 1'-0"



charles vincent george  
ARCHITECTS

1245 E. Diehl Rd. Suite 101  
Naperville, Illinois 60563  
P | 630.357.2023 F | 630.357.2662  
cvgarchitects.com

STAMP:  
PRELIMINARY NOT FOR CONSTRUCTION  
EXPIRES 11/30/2018  
ILL. ARCHITECTURAL DESIGN FIRM NO: 184-000944  
DATE:

COPYRIGHT:  
THE ATTACHED DRAWINGS ARE COPYRIGHTED AND ARE FOR INFORMATIONAL PURPOSES ONLY. CHARLES VINCENT GEORGE ARCHITECTS, INC. HAS NO MEANS OF ENSURING THAT THE DRAWINGS WILL NOT, OR HAVE NOT BEEN AFFECTED BY ANY FILE CONVERSION OR PRINTING PROCESS AND CANNOT THEREFORE BE RESPONSIBLE FOR THEIR CONTENTS. IF THE DRAWINGS ARE TO BE USED BY A THIRD PARTY FOR ANY PURPOSE, THE THIRD PARTY SHALL BE WHOLLY RESPONSIBLE FOR ENSURING THE ACCURACY OF THE INFORMATION CONTAINED THEREIN. ALL UNAUTHORIZED PRINTING AND/OR DISTRIBUTION IS STRICTLY PROHIBITED WITHOUT PRIOR WRITTEN CONSENT FROM CHARLES VINCENT GEORGE ARCHITECTS, INC.

ISSUE AND/OR REVISIONS:		
NO.	DATE	DESCRIPTION
07/03/2018	GMP	

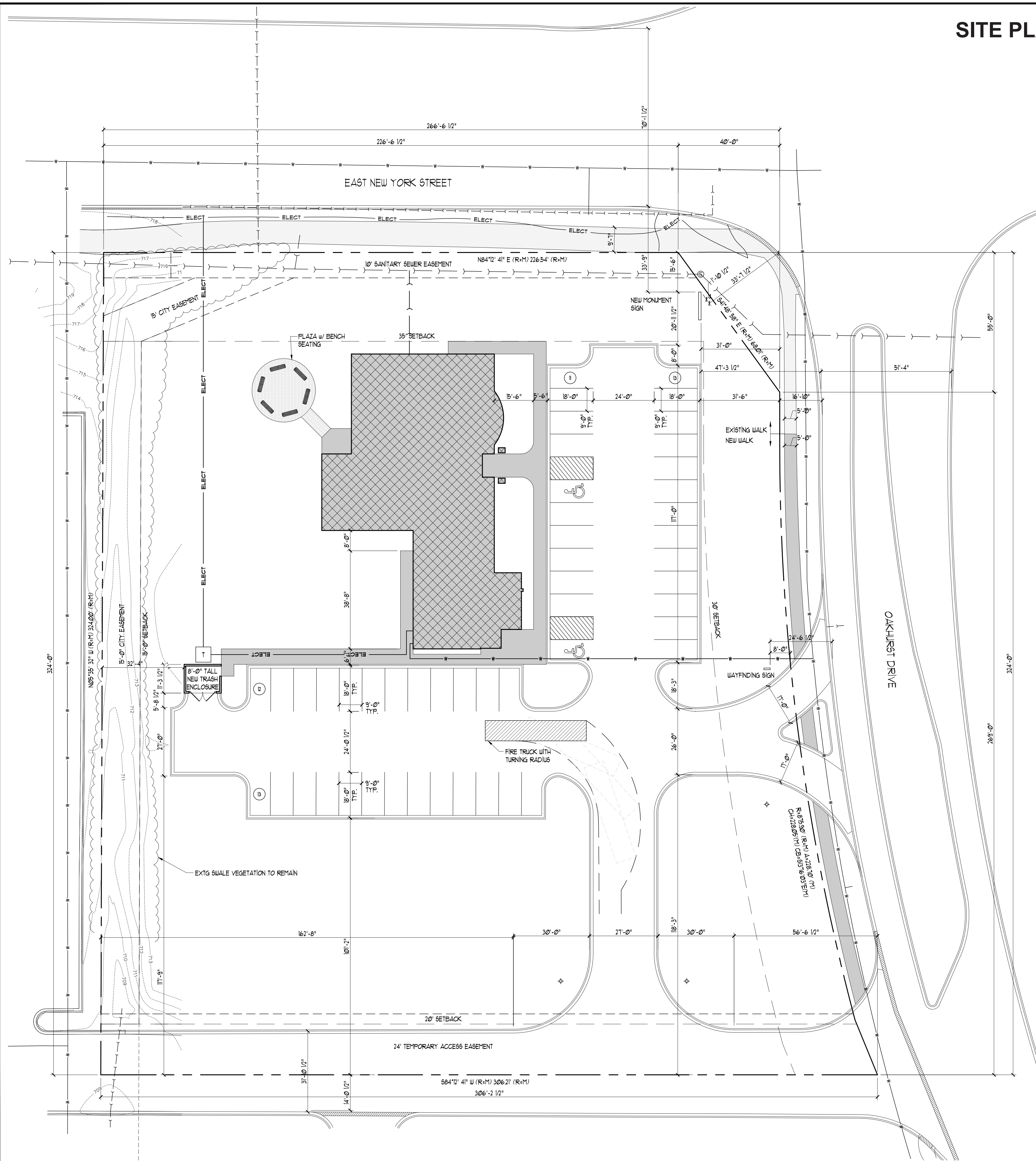
PROJECT:

NEW GROUND-UP CONSTRUCTION  
**WATERLEAF**  
3055 E NEW YORK ST  
AURORA, IL

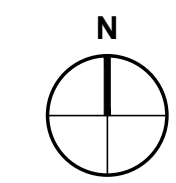
TITLE:  
SITE DETAILS

DATE: 06/18/18	PROJECT # 2018-018
PRINCIPAL: BFG	SHEET: A1.3
PROJECT MGR: JRT	DRAWN BY: JWN
DRAWING FILE PATH: M:\2018-018\DRAWINGS\A1.3 SITE DETAILS_18018	

# SITE PLAN & GROUND SIGN LOCATION PLAN



FINAL PLAN LEGEND	
SYMBOL	DESCRIPTION
	PROPOSED 6,000 SQ. FT. 1 STORY BUILDING
	NEW CONCRETE WALK
	EXTG CONCRETE WALK
	PROPOSED BRICK WALK
	EXTG SWALE VEGETATION TO REMAIN
	TOPOGRAPHY OF SWALE
	PROPERTY LINE
	SETBACK LINE
	SITE UTILITY WATER LINE
	SITE UTILITY ELECTRIC LINE
	SITE SANITARY LINE
	EXTERIOR BOLLARD



**SITE PLAN**  
SCALE: 1" = 20'-0" 49 TOTAL PARKING SPACES (INCLUDING 2 HANDICAP SPACES)



**charles vincent george**  
ARCHITECTS

1245 E. Diehl Rd. Suite 101  
Naperville, Illinois 60563  
P | 630.357.2023 F | 630.357.2662  
cvgarchitects.com

STAMP:

EXPIRES 11/30/2018  
IL ARCHITECTURAL DESIGN FIRM NO: 184-000544

DATE:

**COPYRIGHT:**  
THE ATTACHED DRAWINGS ARE COPYRIGHTED AND ARE FOR INFORMATIONAL PURPOSES ONLY. CHARLES VINCENT GEORGE ARCHITECTS, INC. HAS NO MEANS OF ENSURING THAT THE DRAWINGS WILL NOT, OR HAVE NOT BEEN AFFECTED BY ANY FILE CONVERSION OR PRINTING PROCESS AND CANNOT THEREFORE BE RESPONSIBLE FOR THEIR CONTENTS. IF THE DRAWINGS ARE TO BE USED BY A THIRD PARTY FOR ANY PURPOSE, THE THIRD PARTY SHALL BE WHOLLY RESPONSIBLE FOR ENSURING THE ACCURACY OF THE INFORMATION CONTAINED THEREIN. ALL UNAUTHORIZED PRINTING AND/OR DISTRIBUTION IS STRICTLY PROHIBITED WITHOUT PRIOR WRITTEN CONSENT FROM CHARLES VINCENT GEORGE ARCHITECTS, INC.

**ISSUE AND/OR REVISIONS:**

NO.	DATE	DESCRIPTION
	07/03/2018	GMP

PROJECT:

NEW GROUND-UP CONSTRUCTION  
**WATERLEAF**  
3055 E NEW YORK ST  
AURORA, IL

TITLE:  
SITE PLAN

DATE: **06/18/18** PROJECT # **2018-018**

PRINCIPAL: **BFG** SHEET:

PROJECT MGR: **JRT** DRAWN BY: **JWN** **A1.1**

DRAWING FILE PATH: M:\2018-018\DRAWINGS\A1.1 SITE PLAN\_18018