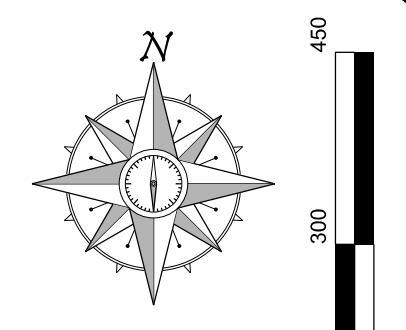


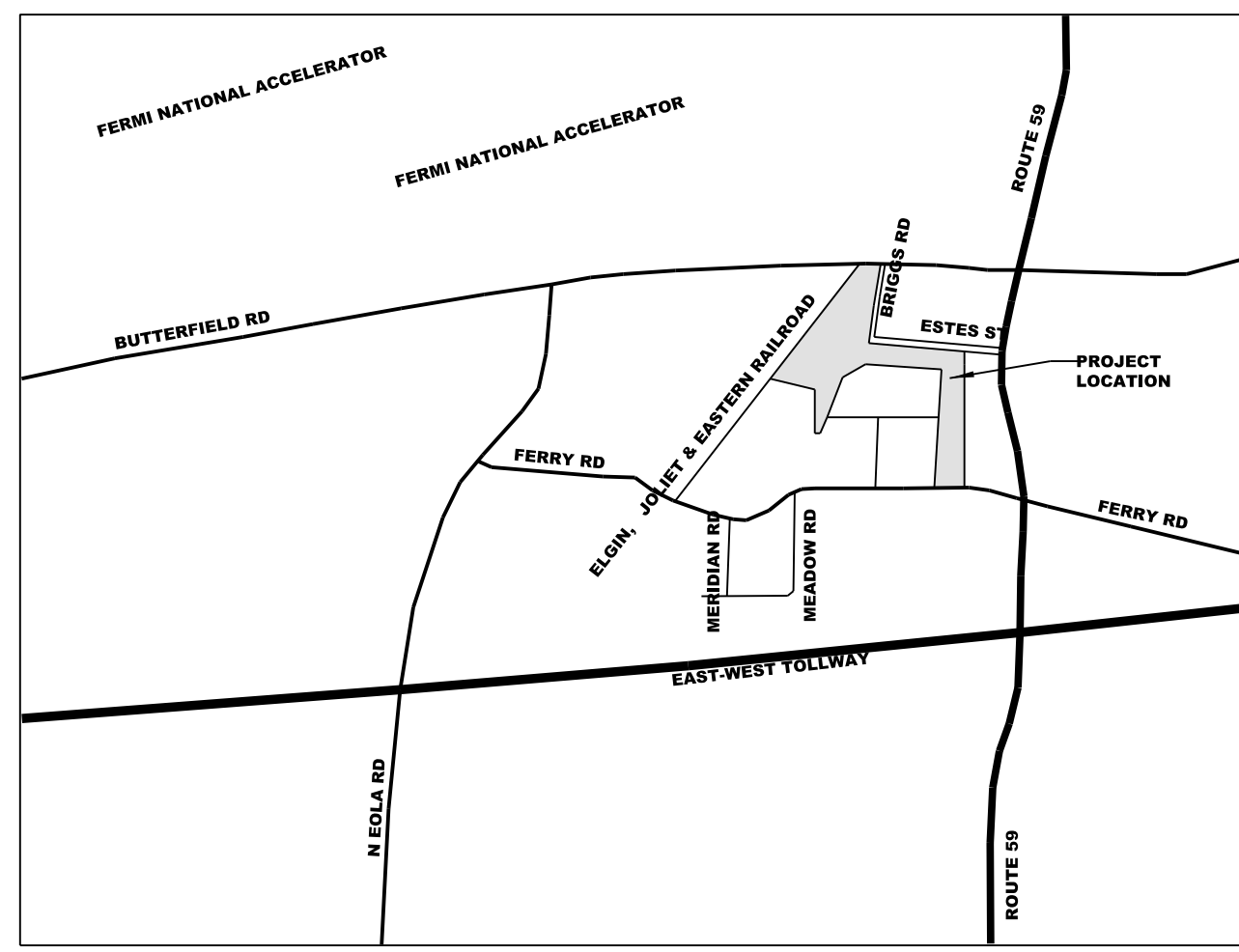
# FINAL PLAN FOR LOT 6, 103, 104, 105, AND 107 OF BUTTERFIELD EAST UNIT 3



DUKE REALTY LIMITED PARTNERSHIP  
5377 West Higgins Road, Suite 800  
Rosemont, IL 60018  
847.232.5400 • 847.232.5691 (tx)

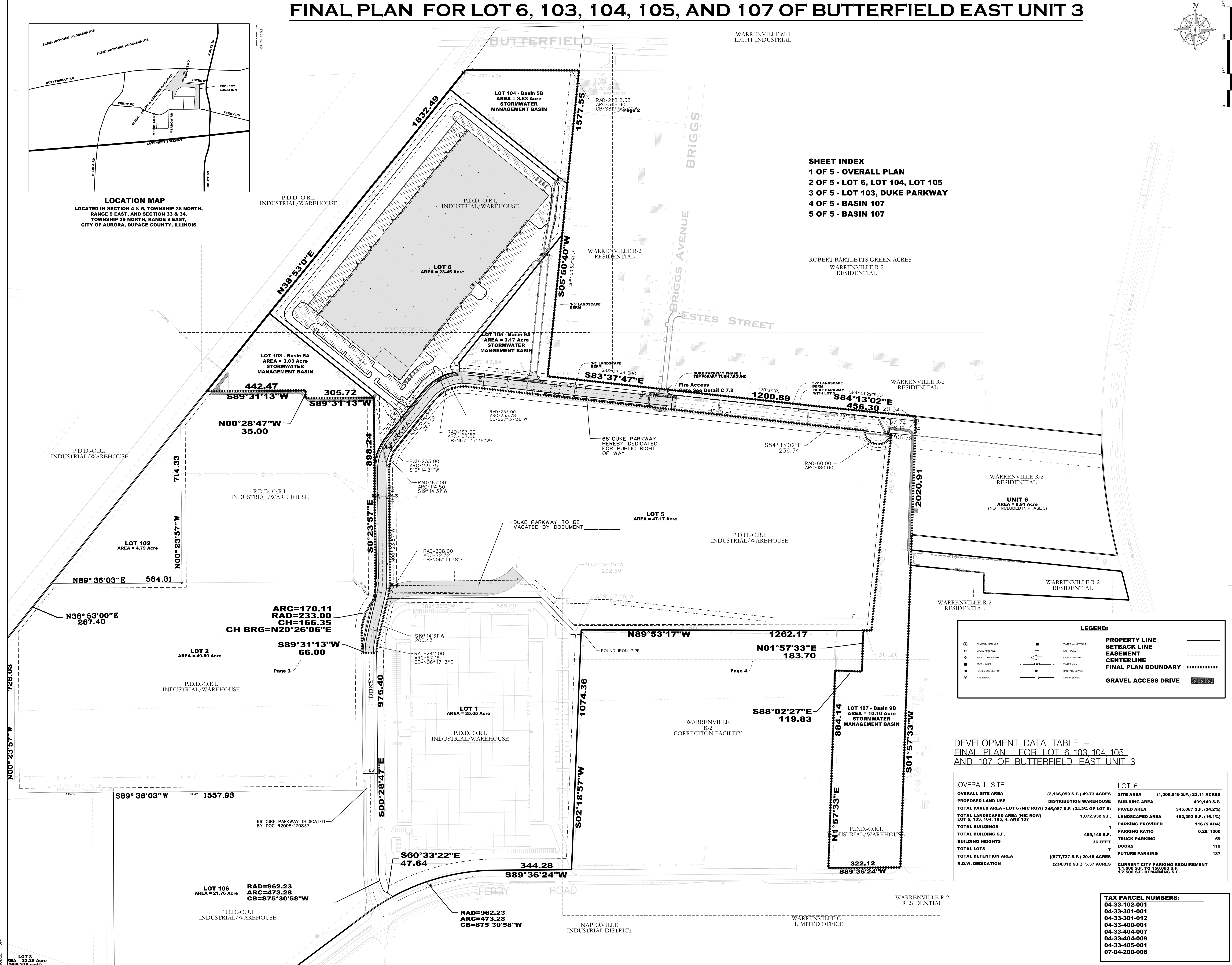
Civil Engineer:  
**WEBSTER, McGRATH & AHLBERG LTD.**  
VMA  
LAND SURVEYING - CIVIL ENGINEERING - LANDSCAPE ARCHITECTURE  
237 South Pleasant Hill Road, Township 38N, Range 9E  
1030666-1001 Fax: (630)693-1700 Email: wma@wmaeng.com  
Design Team License No.: 160201001

Professional Seal



**LOCATION MAP**  
LOCATED IN SECTION 4 & 5, TOWNSHIP 38 NORTH,  
RANGE 9 EAST, AND SECTION 33 & 34,  
TOWNSHIP 39 NORTH, RANGE 9 EAST,  
CITY OF AURORA, DUPAGE COUNTY, ILLINOIS

**SHEET INDEX**  
1 OF 5 - OVERALL PLAN  
2 OF 5 - LOT 6, LOT 104, LOT 105  
3 OF 5 - LOT 103, DUKE PARKWAY  
4 OF 5 - BASIN 107  
5 OF 5 - BASIN 107



**LEGEND:**

○	SHEDDING MANHOLE	■	WATER VALVE TRAP
○	STORM MANHOLE	—	LIGHT POLE
○	STORM CALCULATIONS	—	OVERFLOW EJECTION
○	STORM SILENT	—	WATER MAIN
○	PLANNED END SECTION	—	SEWER MAIN
○	PIPE INTERVAL	—	STORM SEWER

**PROPERTY LINE** (solid line)  
**SETBACK LINE** (dashed line)  
**EASEMENT** (dotted line)  
**CENTERLINE** (long dashed line)  
**FINAL PLAN BOUNDARY** (thick solid line)  
**GRAVEL ACCESS DRIVE** (hatched area)

DEVELOPMENT DATA TABLE -  
FINAL PLAN FOR LOT 6, 103, 104, 105,  
AND 107 OF BUTTERFIELD EAST UNIT 3

OVERALL SITE		LOT 6	
OVERALL SITE AREA	(2,166,059 S.F.) 49.73 ACRES	SITE AREA	(1,006,519 S.F.) 23.11 ACRES
PROPOSED LAND USE	DISTRIBUTION WAREHOUSE	BUILDING AREA	499,140 S.F.
TOTAL PAVED AREA - LOT 6 (NIC ROW)	345,087 S.F. (34.2% OF LOT 6)	PAVED AREA	345,087 S.F. (34.2%)
TOTAL LANDSCAPED AREA (NIC ROW)	1,072,932 S.F. (16.1%)	LANDSCAPED AREA	162,292 S.F. (16.1%)
TOTAL BUILDINGS	1	PARKING PROVIDED	116 (5 ADA)
TOTAL BUILDING S.F.	499,140 S.F.	PARKING RATIO	0.28/ 1000
BUILDING HEIGHTS	36 FEET	TRUCK PARKING	59
TOTAL LOTS	7	DOCKS	119
TOTAL DETENTION AREA	((877,727 S.F.) 20.15 ACRES)	FUTURE PARKING	137
R.O.W. DEDICATION	(234,012 S.F.) 5.37 ACRES	CURRENT CITY PARKING REQUIREMENT	110,000 S.F. TO 150,000 S.F.
		FUTURE CITY PARKING REQUIREMENT	12,500 S.F. REMAINING S.F.

**TAX PARCEL NUMBERS:**  
04-33-102-001  
04-33-301-001  
04-33-301-012  
04-33-400-001  
04-33-404-007  
04-33-404-009  
04-33-405-001  
07-04-200-006

BUTTERFIELD EAST  
PLANNED DEVELOPMENT DISTRICT  
FERRY ROAD AND ROUTE 56  
CITY OF AURORA, IL  
FINAL PLAN FOR LOT 6, 103, 104, 105, AND  
107 OF BUTTERFIELD EAST UNIT 3

ISSUANCES

#	Description	Date
1	COA Review	05/27/2015

DRAWING INFORMATION  
Scale: 1"=150'  
Date: 04/28/2015  
Checked By: SMR/BMB  
Drawn By: BMB  
Duke Realty Job #: 119  
A/E Job #: 41516

DRAWING / SHEET TITLE  
FINAL PLAN  
1 of 5

DATE: 5/20/2015 PROJECT: 1516-333606-DUPAGE/ENGINEERING/PLANS/PHASE 3A/1516 Final Plan - Phase 3 - 2015.dgn

Professional Seal

**BUTTERFIELD EAST  
 PLANNED DEVELOPMENT DISTRICT**  
 FERRY ROAD AND ROUTE 56  
 CITY OF AURORA, IL  
**FINAL PLAN - LOT 6 AND 105**

ISSUANCES

#	Description	Date
1	COA Review	05/27/2015

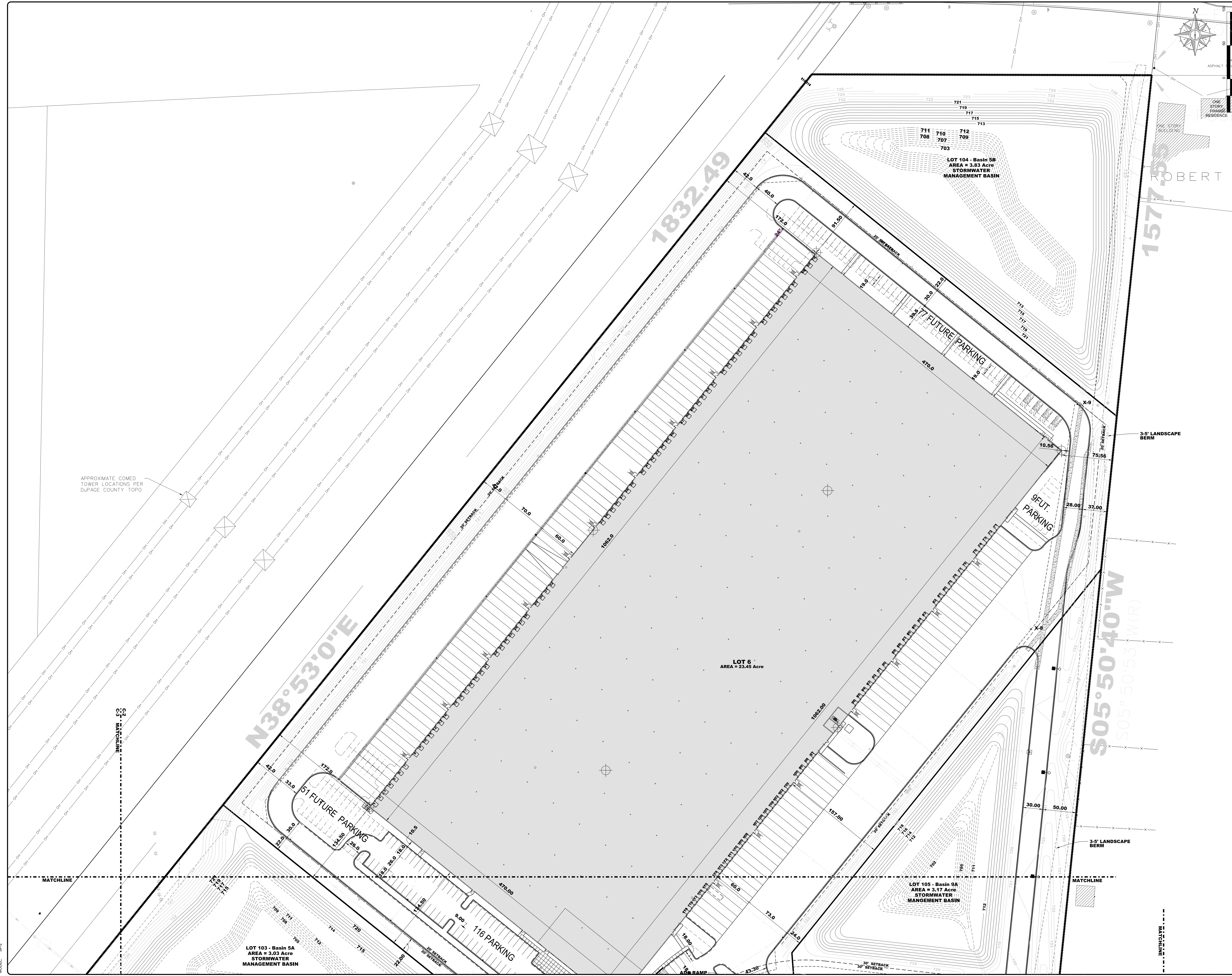
DRAWING INFORMATION

Scale: 1"=50'  
 Date: 04/28/2015  
 Checked By: SMR/BMB  
 Drawn By: BMB  
 Duke Realty Job #:   
 A/E Job #: 41516

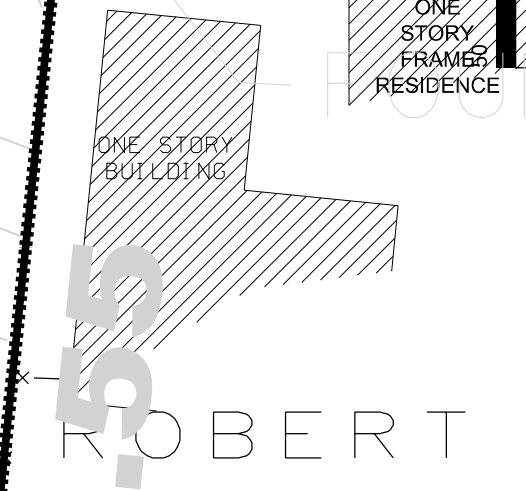
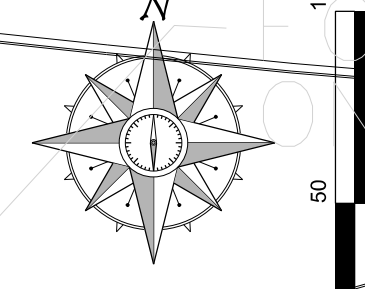
DRAWING / SHEET TITLE

FINAL PLAN  
 LOT 6 AND 105

DATE: 5/29/2015  
 TIME: 10:15:15 AM  
 PROJECT: 1516-333065-DUP-ENGINEERING-PLANS-PHASE 3-41516 Final Plan - Phase 3, 2015.dgn  
 MODEL: BMB



APPROXIMATE COMED  
 TOWER LOCATIONS PER  
 DUPAGE COUNTY TOPO



LOT 104 - Basin 5B  
 AREA = 3.83 Acre  
 STORMWATER  
 MANAGEMENT BASIN

77 FUTURE PARKING

9 FUTURE PARKING

51 FUTURE PARKING

116 PARKING

LOT 103 - Basin 5A  
 AREA = 3.03 Acre  
 STORMWATER  
 MANAGEMENT BASIN

LOT 105 - Basin 9A  
 AREA = 3.17 Acre  
 STORMWATER  
 MANAGEMENT BASIN

LOT 6  
 AREA = 23.45 Acre

3'-5" LANDSCAPE  
 BERM

S05°50'40"W  
 S05°50'53"W(R)

N38°53'0"E

1832.49

1577.53

MATCHLINE

MATCHLINE

MATCHLINE

32' MATCHLINE

MATCHLINE

Professional Seal

**BUTTERFIELD EAST  
 PLANNED DEVELOPMENT DISTRICT**

FERRY ROAD AND ROUTE 56  
 CITY OF AURORA, IL

**FINAL PLAN - LOT 103, DUKE PARKWAY, AND WEST LOT 5**

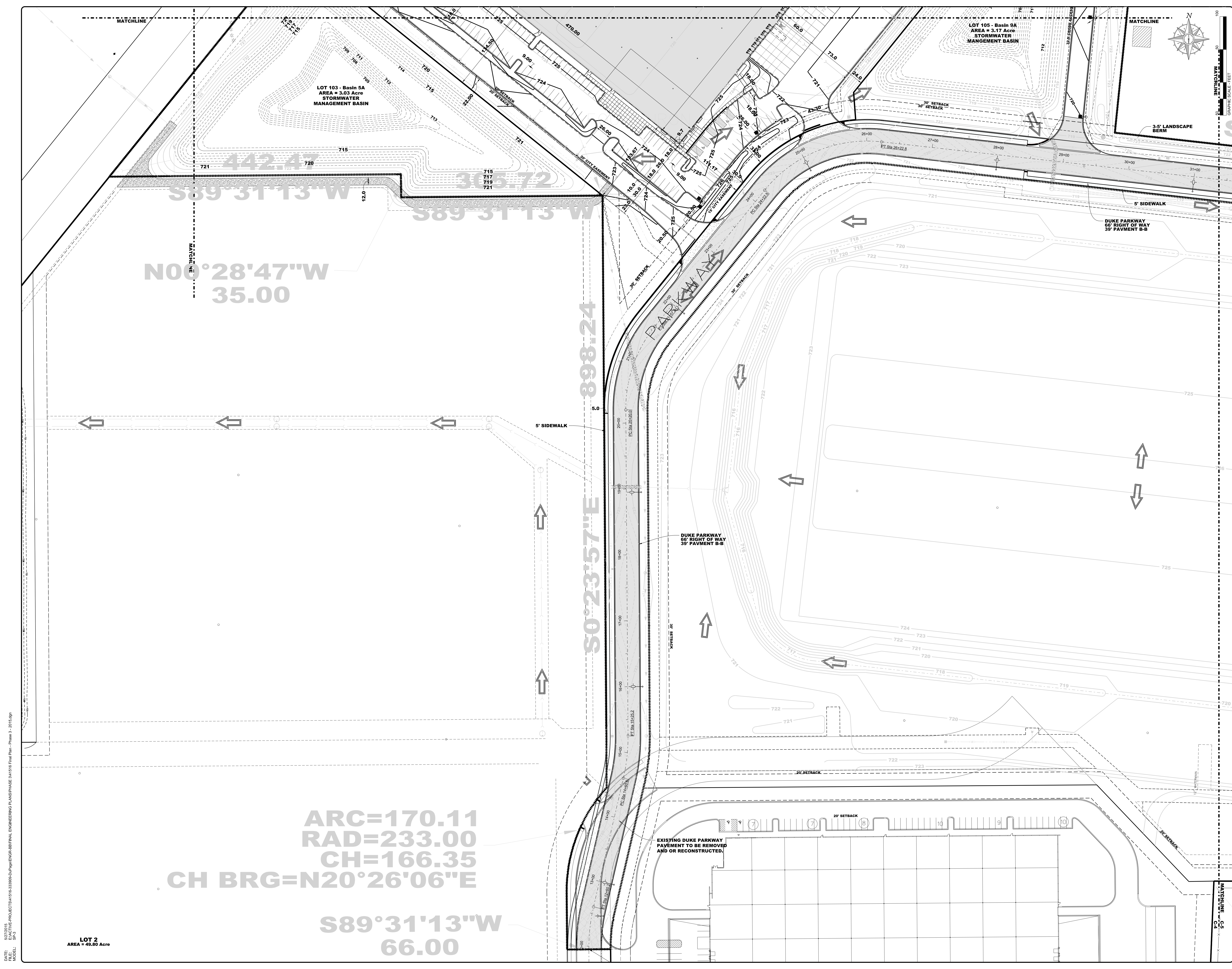
ISSUANCES

#	Description	Date
1	COA Review	05/27/2015

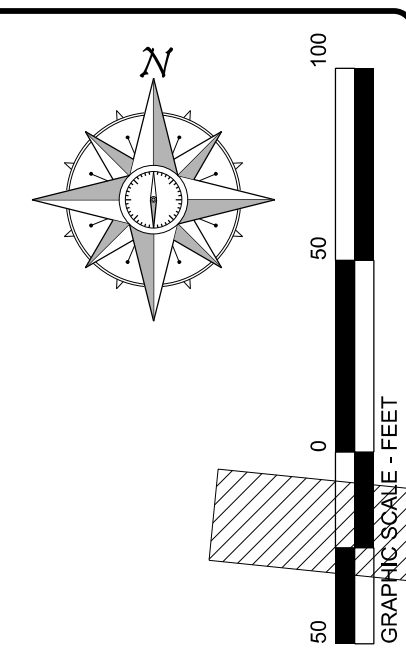
DRAWING INFORMATION

Scale:	1"=50'
Date:	04/28/2015
Checked By:	SMR/BMB
Drawn By:	BMB
Duke Realty Job #:	
A/E Job #:	41516

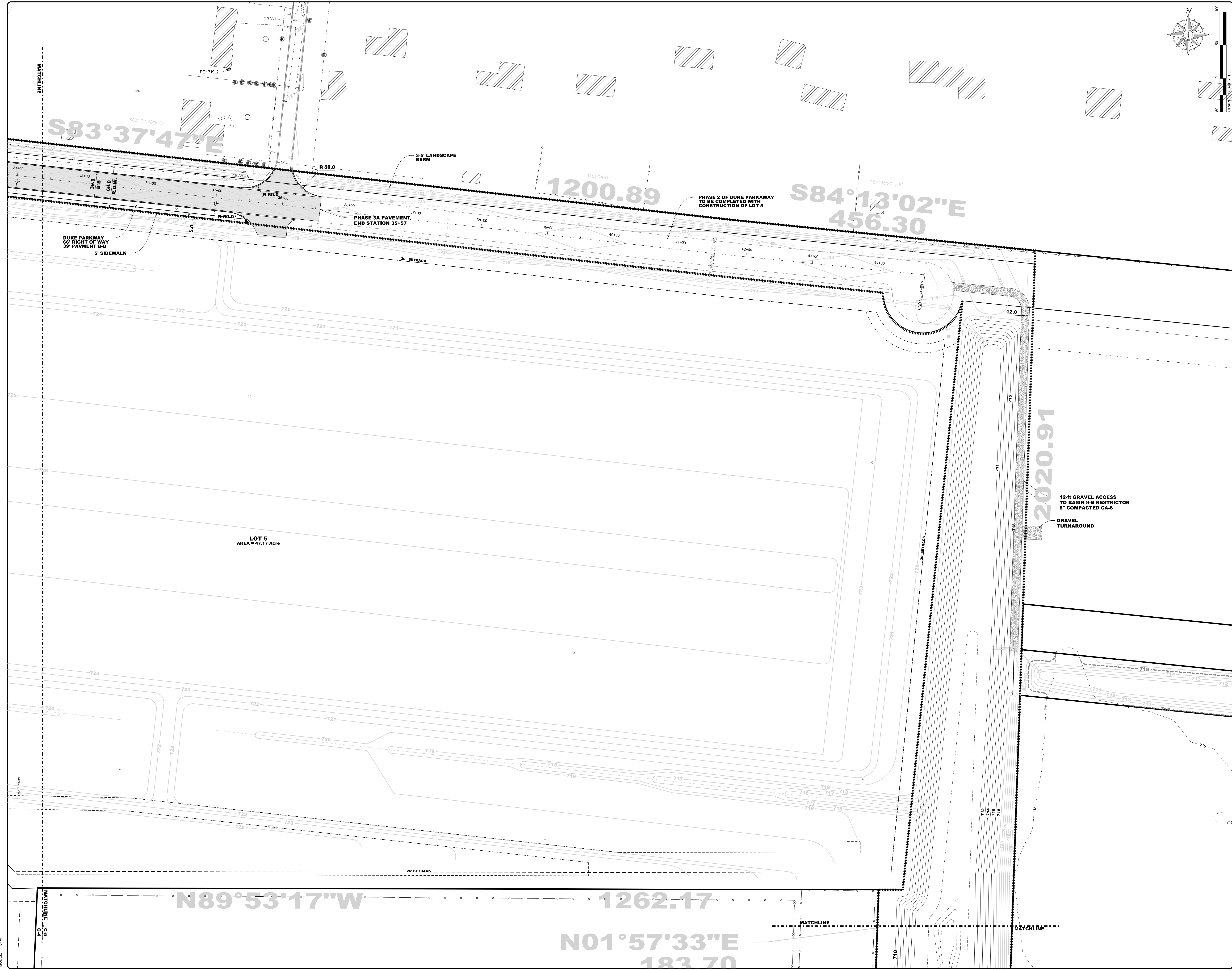
DRAWING / SHEET TITLE  
**FINAL PLAN  
 DUKE PKWY., WEST LOT 5**



DATE: 5/27/2015  
 MODEL: SFA  
 PROJECT: 1516-333695-DUP-ENGINEERING-PLANS-PHASE 5-1516 Final Plan - Phase 5, 2015.dgn



Professional Seal



**BUTTERFIELD EAST  
 PLANNED DEVELOPMENT DISTRICT**

FERRY ROAD AND ROUTE 56  
 CITY OF AURORA, IL

**FINAL PLAN - EAST LOT 5 AND LOT 107**

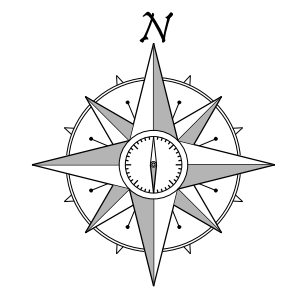
**ISSUANCES**

#	Description	Date
1	COA Review	05/27/2015

**DRAWING INFORMATION**

Scale:	1"=50'
Date:	04/28/2015
Checked By:	SMR/BMB
Drawn By:	BMB
Duke Realty Job #:	
A/E Job #:	41516

DATE: 5/27/2015  
 TIME: 10:15 AM  
 PROJECT: 1516-333665-DUP-ENGINEERING-PLANS/PHASE 3A/1516 Final Plan - Phase 1, 2015.dgn  
 MODEL: SVA



Civil Engineer:

**WEBSTER, McGRATH & AHLBERG LTD.**

**WMA**  
 LAND SURVEYING - CIVIL ENGINEERING - LANDSCAPE ARCHITECTURE

207 South Franklin Road, Warrenville, Illinois 60157  
 (630) 884-7001 Fax: (630) 884-1700 Email: wma@wma-ltd.com  
 Design Firm License No. 150203721

Professional Seal

**BUTTERFIELD EAST  
 PLANNED DEVELOPMENT DISTRICT**  
 FERRY ROAD AND ROUTE 56  
 CITY OF AURORA, IL  
**FINAL PLAN - LOT 107**

ISSUANCES

#	Description	Date
1	COA Review	05/27/2015

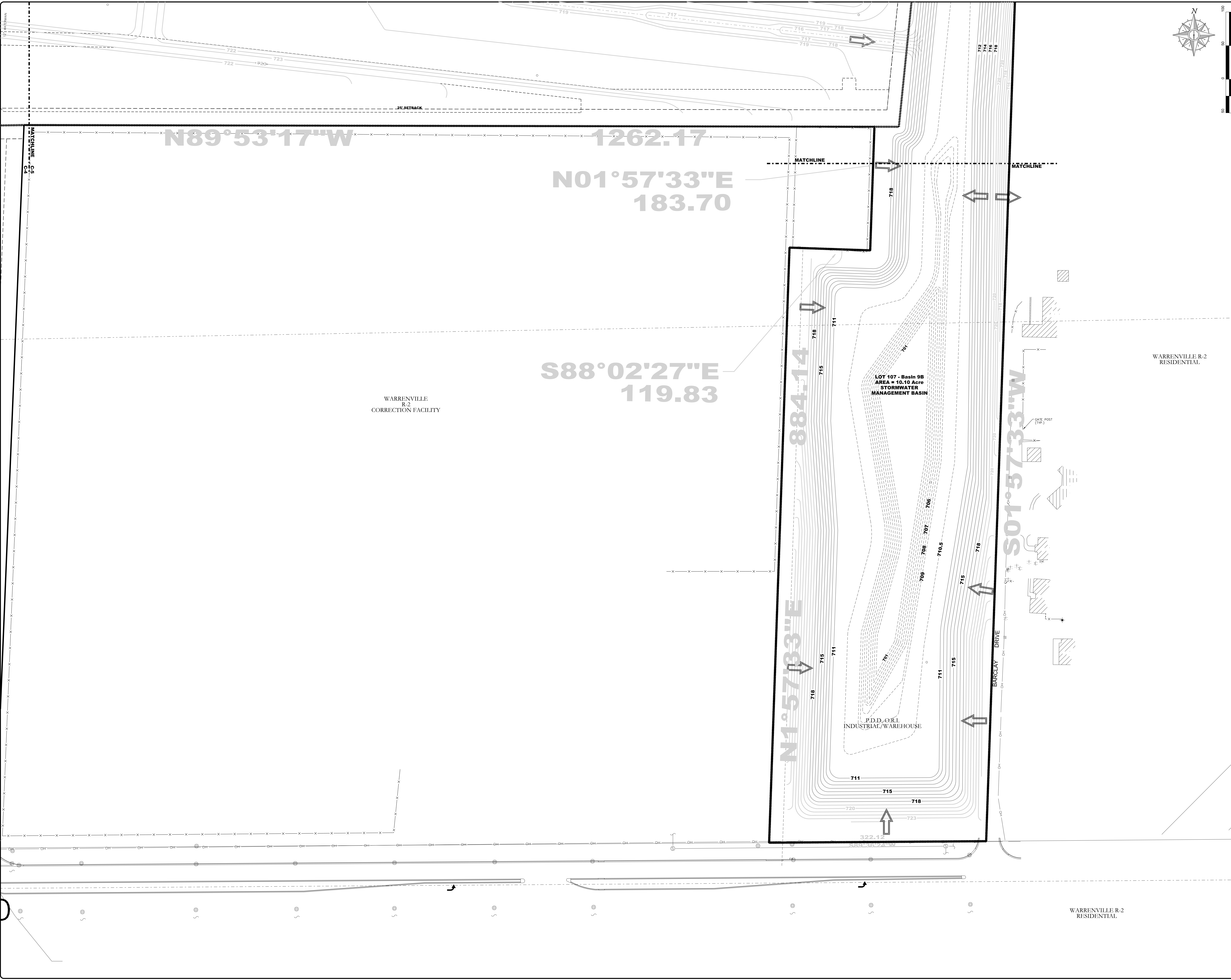
DRAWING INFORMATION

Scale: 1"=50'  
 Date: 04/28/2015  
 Checked By: SMR/BMB  
 Drawn By: BMB  
 Duke Realty Job #: \_\_\_\_\_  
 A/E Job #: 41516

DRAWING / SHEET TITLE

**FINAL PLAN  
 LOT 107**

**5 of 5**



DATE: 5/27/2015  
 TIME: 10:00 AM  
 PROJECT: 1516-333665-CO-Engineering-Submittal-Engineering-Plans-Phase 1-2015.dgn  
 MODEL: SPS

Professional Seal

BUTTERFIELD LOT 6

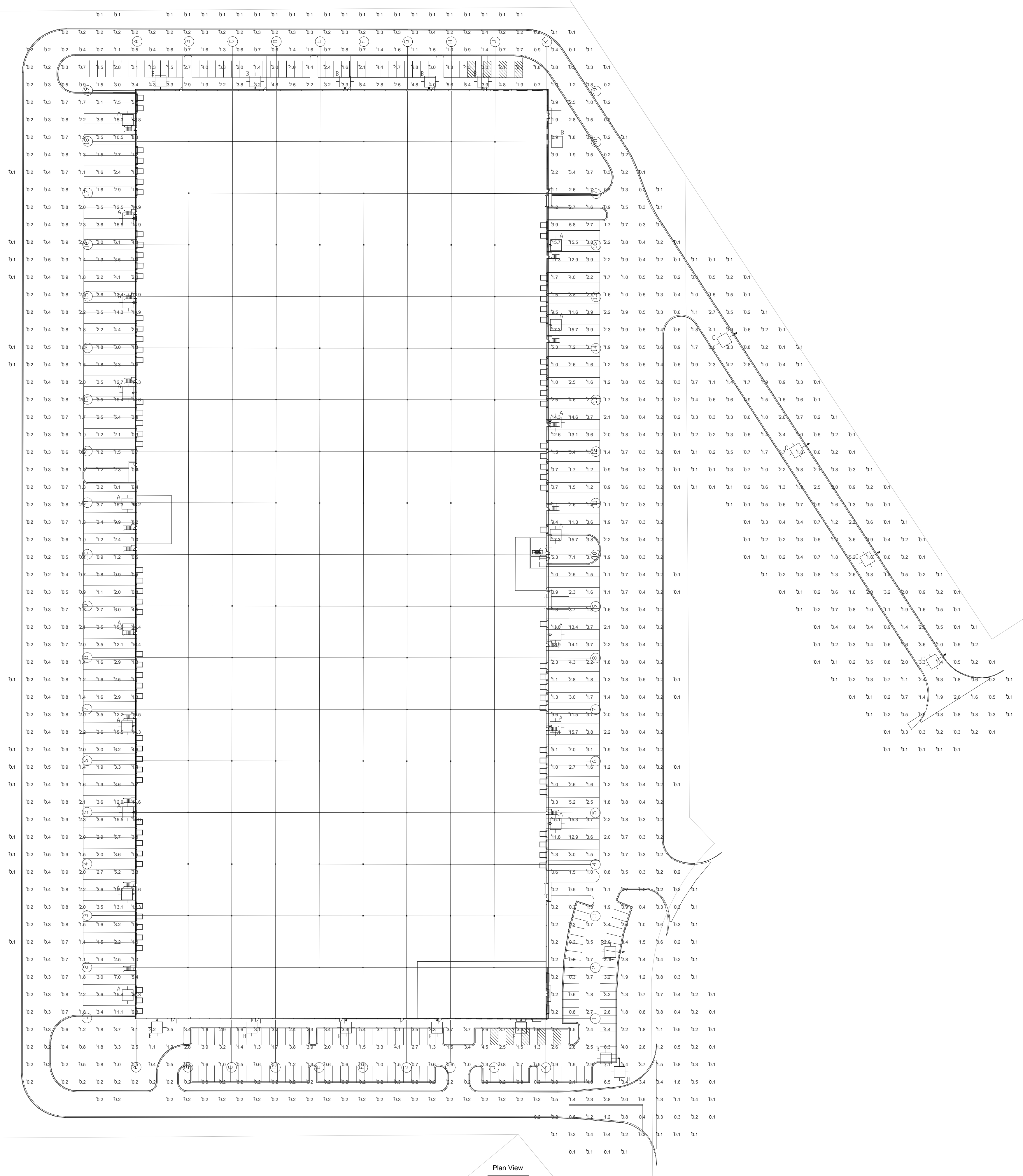
DUKE PARKWAY  
 AURORA, IL

ELECTRIC SITE LIGHTING PLAN

LUMINAIRE SCHEDULE									
Symbol	Label	Qty	Catalog Number	Description	Lamp	File	Lumens	LLF	Watts
☐	A	17	KSF3 1000M R4	Specification Area Luminaire: 1000W Metal Halide, R4 Reflector, Full Cutoff MEETS THE NIGHTTIME FRIENDLY CRITERIA	ONE 1000-WATT CLEAR BT-56 METAL HALIDE IN HORIZONTAL POSITION	KSF3_1000M_R4.lvs	107800	0.72	1080
☐	B	11	KSF2 400M R3	Specification Area Luminaire: 400W Metal Halide, R3 Reflector, Full Cutoff MEETS THE NIGHTTIME FRIENDLY CRITERIA	ONE 400 WATT CLEAR ED29 PULSE START METAL HALIDE IN HORIZONTAL POSITION	KSF2_400M_R3.lvs	38000	0.72	456
☐	B1	1	KSF2 400M R3	Specification Area Luminaire: 400W Metal Halide, R3 Reflector, Full Cutoff MEETS THE NIGHTTIME FRIENDLY CRITERIA	ONE 400 WATT CLEAR ED29 PULSE START METAL HALIDE IN HORIZONTAL POSITION	KSF2_400M_R3.lvs	38000	0.72	456
☐	B2	1	KSF2 400M R3	Specification Area Luminaire: 400W Metal Halide, R3 Reflector, Full Cutoff MEETS THE NIGHTTIME FRIENDLY CRITERIA	ONE 400 WATT CLEAR ED29 PULSE START METAL HALIDE IN HORIZONTAL POSITION	KSF2_400M_R3.lvs	38000	0.72	912
☐	C	4	KSF2 400M R3	Specification Area Luminaire: 400W Metal Halide, R3 Reflector, Full Cutoff MEETS THE NIGHTTIME FRIENDLY CRITERIA	ONE 400 WATT CLEAR ED29 PULSE START METAL HALIDE IN HORIZONTAL POSITION	KSF2_400M_R3.lvs	38000	0.72	456

STATISTICS						
Description	Symbol	Avg	Max	Min	Max/Min	Avg/Min
Calc Zone #1	+	1.8 fc	18.2 fc	0.1 fc	182.0:1	18.0:1

LUMINAIRE LOCATIONS						
No.	Label	X	Y	MH	Orientation	Tilt
1	B	473.3	1002.9	30.0	90.0	0.0
2	A	474.0	884.4	30.0	90.0	0.0
3	A	474.0	793.1	30.0	90.0	0.0
4	A	474.0	681.9	30.0	90.0	0.0
5	A	474.0	553.1	30.0	90.0	0.0
6	A	474.0	439.1	30.0	90.0	0.0
7	A	474.0	223.4	30.0	90.0	0.0
8	A	-1.7	1027.9	30.0	270.0	0.0
9	A	-1.7	915.1	30.0	270.0	0.0
10	A	-1.7	818.9	30.0	270.0	0.0
11	A	-1.7	715.6	30.0	270.0	0.0
12	A	-1.7	588.6	30.0	270.0	0.0
13	A	-1.7	445.6	30.0	270.0	0.0
14	A	-1.7	334.6	30.0	270.0	0.0
15	A	474.0	333.4	30.0	90.0	0.0
16	A	-1.7	236.1	30.0	270.0	0.0
17	A	-1.7	142.6	30.0	270.0	0.0
18	A	-1.7	27.0	30.0	270.0	0.0
19	B	28.6	1064.0	30.0	0.0	0.0
20	B	137.1	1064.0	30.0	0.0	0.0
21	B	239.4	1064.0	30.0	0.0	0.0
22	B	24.8	-1.9	30.0	180.0	0.0
23	B	132.9	-1.9	30.0	180.0	0.0
24	B	240.8	-1.9	30.0	180.0	0.0
25	B1	558.4	76.6	30.0	270.0	0.0
26	B2	553.4	-45.1	30.0	0.0	0.0
27	C	894.5	396.9	30.0	56.6	0.0
28	C	816.6	512.8	30.0	56.6	0.0
29	C	737.8	637.5	30.0	56.6	0.0
30	C	656.6	762.1	30.0	56.6	0.0
31	B	344.8	-1.9	30.0	180.0	0.0
32	B	335.6	1064.0	30.0	0.0	0.0
33	B	396.9	1064.0	30.0	0.0	0.0
34	B	440.5	-1.9	30.0	180.0	0.0



ISSUANCES		
#	Description	Date

DRAWING INFORMATION	
Scale:	AS NOTED
Date:	04/15/15
Checked By:	ST
Drawn By:	ST JR
Duke Realty Job #:	*****
A/E Job #:	214275

DRAWING / SHEET TITLE  
**ELECTRIC SITE LIGHTING PLAN**  
 SHEET NUMBER  
**E-001**



## FEATURES & SPECIFICATIONS

**INTENDED USE** — Ideal for car lots, street lighting or parking areas.

**CONSTRUCTION** — Rugged, .063" thick, aluminum rectilinear housing. Formed for weather-tight seal and integrity. Naturally anodized, extruded aluminum door frame with mitered corners, is retained with two .188" diameter hinge pins and secured with one quarter-turn, quick-release fastener. Weatherproof seal between housing and door frame is accomplished with an integrally designed, extruded silicone gasket that snaps into the door frame, and another gasket applied to the housing.

Finish: Standard finish is dark bronze (DDB), polyester powder finish with other architectural colors available.

**OPTICS** — Reflectors are anodized and segmented for superior uniformity and control. Reflectors attach with tool-less fasteners and are rotatable and interchangeable. KSF3 Type IV and Type V optics are rotatable. Three cutoff distributions available: Type III (asymmetric), Type IV (forward throw), Type V (square). Lens is .125" thick impact-resistant tempered glass with thermally applied silk-screened shield.

**ELECTRICAL** — Ballast: 1000M - Constant wattage autotransformer. Pulse-start ballast (SCWA) required for 750W, 775W or 875W metal halide.

Ballasts are 100% factory-tested.

Socket is porcelain, horizontally mounted mogul base socket with copper alloy, nickel-plated screw shell and center contact. UL listed 1500W-600V.

**INSTALLATION** — Extruded aluminum arm for pole or wall mounting is shipped in fixture carton. Optional mountings available.

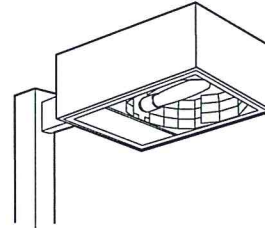
**LISTING** — UL listed (standard). CSA Certified (see Options). NOM Certified (see Options). UL listed for 25°C ambient temperature and wet locations. IP65 rated.

**WARRANTY** — 1-year limited warranty. Complete warranty terms located at

[www.acuitybrands.com/CustomerResources/Terms\\_and\\_conditions.aspx](http://www.acuitybrands.com/CustomerResources/Terms_and_conditions.aspx)

Note: Specifications subject to change without notice.

Catalog Number	KSF3 1000M R4 277 WB12 DNA
Notes	Wall Mounted
Type	A



Specifications

EPA: 3.0 ft<sup>2</sup> (.28 m<sup>2</sup>)

(includes arm)

Length: 29-19/32 (75.2)

Width: 23-19/32 (59.9)

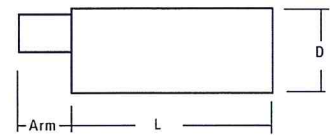
Depth: 10-1/2 (26.7)

Arm: 12 (30.5)

\*Weight: 80 lbs (36.3 kg)

\*Weight as configured in example below.

All dimensions are inches (centimeters) unless otherwise specified.



Mounting option

SPxx, RPxx, DA12P

WBxx, DA12WB

WWxx

Drilling template

5

6

7

Area Lighting

# KSF3

METAL HALIDE: 750 - 1000W


HIGH PRESSURE SODIUM: 1000W


25' to 40' Mounting

### ORDERING INFORMATION

For shortest lead times, configure product using **bolded options**.

**Example:** KSF3 1000M R3 TB SCWA SP12 LPI

KSF3	1000M	R4	277			WB 12
Series	Wattage	Distribution	Voltage	Ballast		Mounting
KSF3	<u>Metal halide</u>	<b>R3</b> Type III asymmetric <b>R4</b> Type IV forward throw <b>R5S</b> Type V square <sup>4</sup>	120	<b>480<sup>5</sup></b>	<b>(blank)</b> Magnetic CWI Contant wattage isolated  <b>SCWA</b> Super CWA pulse-start ballast	<u>Type</u>
	750M <sup>1</sup>		208 <sup>5</sup>	TB <sup>6</sup>		<b>SP</b> Square pole
	775M <sup>1,2</sup>		240 <sup>5</sup>	TBV <sup>7</sup>		<b>RP</b> Round pole
	875M <sup>1,2</sup>		277	23050HZ <sup>8</sup>		<b>WB</b> Wall bracket
<b>1000M</b>			347			<b>WW</b> Wood pole or wall bracket
<u>High pressure sodium<sup>3</sup></u>						
<b>1000S</b>						
						<u>Arm length</u> <b>12</b> 12" arm <u>Shipped separately</u> DA12P Degree arm, pole DA12WB Degree arm, wall KMA Mast arm adapter KTMB Twin mounting bar

Options				DNA				Lamp (required)	
<u>Shipped installed in fixture</u>		QRS Quartz restrrike system <sup>10</sup>	<u>Shipped separately<sup>11</sup></u>		<b>(blank)</b> Dark bronze		DNAXD Natural aluminum	LPI Lamp included	
PER NEMA twist-lock receptacle only (no photocontrol)	QRSTD QRS time delay <sup>10</sup>	PE1 NEMA twist-lock PE (120, 208, 240V)	DWH White		DWHXD White		DDBTXD Textured dark bronze	L/LP Less lamp	
SF Single fuse (120, 277, 347V) <sup>9</sup>	EC Emergency circuit <sup>10</sup>	PE3 NEMA twist-lock PE (347V)	DBL Black		DDBTXD Textured dark bronze		DBLBXD Textured black	 NIGHT-TIME FRIENDLY <small>Consistent with IESNA's goal of Green Glare™ - a shift for light pollution reduction</small>	
DF Double fuse (208, 240, 480V) <sup>9</sup>	CSA CSA Certified	PE4 NEMA twist-lock PE (480V)	DNA Natural aluminum		DNATXD Textured natural aluminum		DWHGXD Textured white		
	NOM NOM Certified <sup>8</sup>	PE7 NEMA twist-lock PE (277V)	CRT Non-stick protective coating <sup>14</sup>		DDBXD Dark bronze				
		SC Shorting cap for PER option	<u>Super Durable Finishes</u>		DBLXD Black				
		HS House side shield (R3, R4) <sup>12</sup>							

Accessories: Tenon Mounting Slipfitter						
Number of fixtures.						
Tenon O.D.	One	Two@180°	Two@90°	Three@120°	Three@90°	Four@90°
2-3/8" (6)	T20-190	T20-280	T20-290	T20-320	T20-390	T20-490
2-7/8" (7.3)	T25-190	T25-280	T25-290	T25-320	T25-390	T25-490
4" (10.2)	T35-190	T35-280	T35-290	T35-320	T35-390	T35-490

#### Notes

- Must be ordered with SCWA. 750M not available with 347v or 480v.
- Must specify voltage (120, 208, 240, 277, 347 or 480). Not available with TB. 208, 240, and 480v not available in Canada.
- Not available with SCWA.
- Type V square uses BT37 lamp only.
- Must specify CWI for use in Canada.
- Optional multi-tap ballast (120, 208, 240, 277V); (120, 277, 347V in Canada).

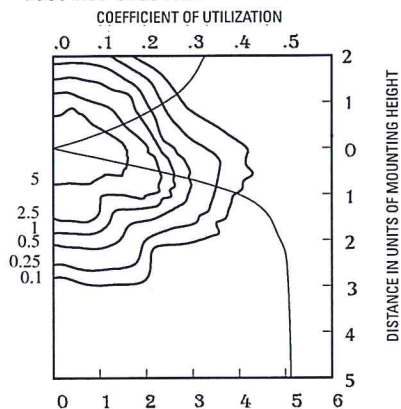
- Optional five-tap ballast (120, 208, 240, 277, 480V); not available with CSA.
- Consult factory for availability.
- Must specify voltage. Not available with TB or TBV.
- Maximum allowable wattage lamp included.
- May be ordered as an accessory.
- Available with R3 and R4 distributions only. Order as KSF3HS U when ordered as an accessory.
- See [www.lithonia.com/archcolors](http://www.lithonia.com/archcolors) for additional color options.
- Black finish only.

# KSF3 Arm-Mounted Rectilinear Cutoff Lighting

Coefficient of Utilization   
Initial Footcandles 

## KSF3 1000M R3

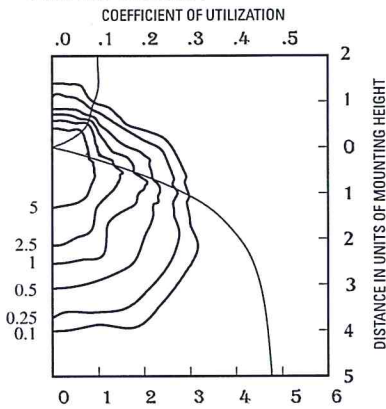
Test no. 93031002



1000W metal halide lamp 107,800 rated lumens. Footcandle values based on 35' mounting height, distribution Type III, cutoff.

## KSF3 1000M R4

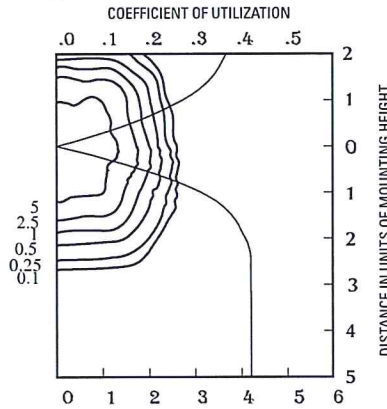
Test no. 93030801



1000W metal halide lamp 107,800 rated lumens. Footcandle values based on 35' mounting height, distribution Type IV, cutoff.

## KSF3 1000M R5S

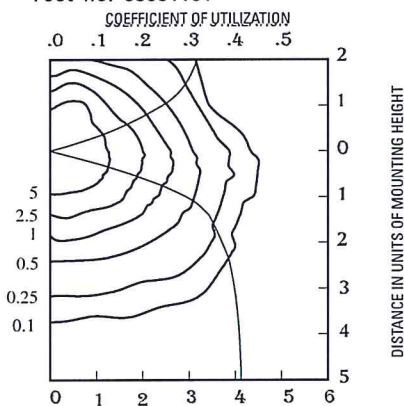
Test no. 93022601



1000W metal halide lamp 107,800 rated lumens. Footcandle values based on 35' mounting height, distribution Type V, cutoff.

## KSF3 1000S R3

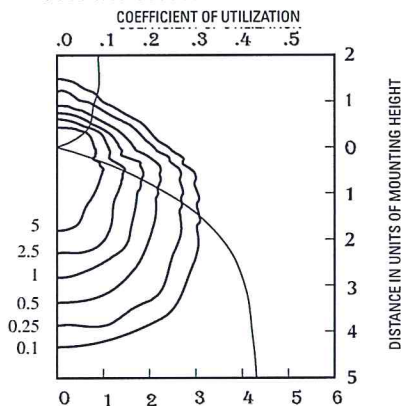
Test no. 93031101



1000W high pressure sodium lamp, 140,000 rated lumens. Footcandle values based on 35' mounting height, distribution Type III, cutoff.

## KSF3 1000S R4-HS

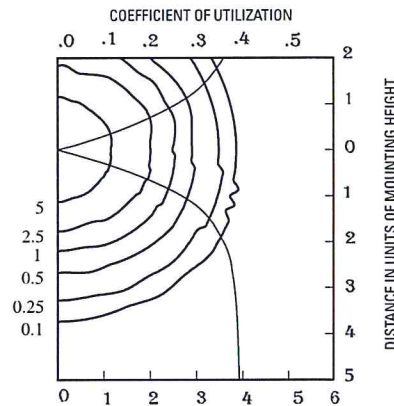
Test no. 93030902



1000W high pressure sodium lamp, 140,000 rated lumens. Footcandle values based on 35' mounting height, distribution Type IV, cutoff.

## KSF3 1000S R5S

Test no. 93031201



1000W high pressure sodium lamp, 140,000 rated lumens. Footcandle values based on 35' mounting height, distribution Type V, cutoff.

### NOTES:

- 1 Photometric data for other distributions can be accessed from the Lithonia Lighting website. ([www.Lithonia.com](http://www.Lithonia.com))
- 2 For electrical characteristics, consult outdoor technical data specification sheets on [www.Lithonia.com](http://www.Lithonia.com).
- 3 Tested to current IES and NEMA standards under stabilized laboratory conditions. Various operating factors can cause differences between laboratory and actual field measurements. Dimensions and specifications are based on the most current available data and are subject to change.

### Mounting Height Correction Factor

(Multiply the fc level by the correction factor)

30 ft.= 1.36

40 ft.= 0.77

$$\left( \frac{\text{Existing Mounting Height}}{\text{New Mounting Height}} \right)^2 = \text{Correction Factor}$$





## FEATURES & SPECIFICATIONS

**INTENDED USE** — Ideal for car lots, street lighting or parking areas.

**CONSTRUCTION** — Rugged, .063" thick, aluminum rectilinear housing. Formed for weather-tight seal and integrity. Naturally anodized, extruded aluminum door frame with mitered corners, is retained with two .188" diameter hinge pins and secured with one quarter-turn, quick-release fastener. Weatherproof seal between housing and door frame is accomplished with an integrally designed, extruded silicone gasket that snaps into the door frame, and another gasket applied to the housing.

Finish: Standard finish is dark bronze (DDB), polyester powder finish with other architectural colors available.

**OPTICS** — Reflectors are anodized and segmented for superior uniformity and control. Reflectors attach with tool-less fasteners and are rotatable and interchangeable. Five cutoff distributions available: Type II (roadway), Type III (asymmetric), Type IV (forward throw, sharp cutoff), Type IV (wide, forward throw), Type V (square). Lens is .125" thick impact-resistant tempered glass with thermally applied silk-screened shield.

**ELECTRICAL** — Ballast: Constant wattage autotransformer for 250-400W. Super CWA pulse-start ballast required for 320W and 350W (SCWA option). Super CWA (pulse start ballast), 88% efficient and EISA legislation compliant, is required for 250-400W (SCWA option) for U.S. shipments only. CSA or INTL required for probe-start shipments outside the U.S.

Ballasts are 100% factory-tested.

Socket is porcelain, horizontally mounted mogul base socket with copper alloy, nickel-plated screw shell and center contact. UL listed 1500W-600V.

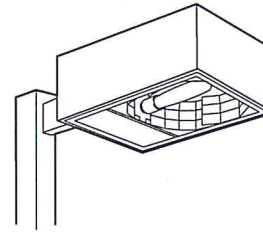
**INSTALLATION** — Extruded aluminum arm for pole or wall mounting is shipped in fixture carton. Optional mountings available.

**LISTING** — UL listed (standard). CSA Certified (see Options). NOM Certified (see Options). UL listed for 25°C ambient temperature and wet locations. IP65 rated.

**WARRANTY** — 1-year limited warranty. Complete warranty terms located at [www.acuitybrands.com/CustomerResources/Terms\\_and\\_conditions.aspx](http://www.acuitybrands.com/CustomerResources/Terms_and_conditions.aspx)

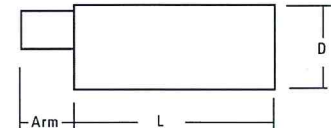
Note: Specifications subject to change without notice.

Catalog Number	KSF2 R3 277 WB06 DNA
Notes	Wall Mounted
Type	B



Specifications

EPA: 2.0 ft<sup>2</sup> (.28 m<sup>2</sup>) (includes arm)  
 Length: 24-19/32 (62.5)  
 Width: 17-25/32 (62.5)  
 Depth: 8-5/16 (21.1)  
 Arm: 4 (10.2)  
 \*Weight: 52 lbs (23.6 kg)  
 \*Weight as configured in example below.  
 All dimensions are inches (centimeters) unless otherwise specified.



Mounting option	Drilling template
SPxx, RPxx, DA12P	5
WBxx, DA12WB	6
WWxx	7

Area Lighting

# KSF2

METAL HALIDE: 250-400W


HIGH PRESSURE SODIUM: 200-400W


15' to 25' Mounting

### ORDERING INFORMATION

For shortest lead times, configure product using **bolded options**.

**Example:** KSF2 400M R3 TB SCWA SP04 LPI

KSF2	400M	R3	277		WB06	
Series	Wattage	Distribution	Voltage	Ballast	Mounting	
KSF2	<u>Metal halide</u>	R2 Type II roadway	120 <b>347</b>	<b>(blank)</b> Magnetic CWI Contant wattage isolated  <b>SCWA</b> Super CWA pulse-start ballast NOTE: For shipments to U.S. territories, SCWA must be specified to comply with EISA.	<u>Type</u> SP___ Square pole RP___ Round pole WB___ Wall bracket WW___ Wood pole or wall bracket	
	<b>250M<sup>1</sup></b> 350M <sup>2,3,4</sup>	R3 Type III asymmetric	<b>208<sup>6</sup></b> <b>480<sup>6</sup></b>			<u>Arm length<sup>9</sup></u>
	<b>320M<sup>2,3</sup></b> 400M <sup>1,2</sup>	<b>R4SC</b> Type IV forward throw, sharp cutoff	240 <sup>6</sup> TB <sup>7</sup>			<u>Shipped separately</u>
	<u>High pressure sodium<sup>5</sup></u>	R4W Type IV wide, forward throw	<b>277</b> 23050HZ <sup>8</sup>			DA12P Degree arm, pole DA12WB Degree arm, wall KMA Mast arm adapter KTMB Twin mounting bar
200S 400S	R5S Type V square					
250S						

Options				DNA		
Shipped installed in fixture		Shipped separately <sup>13</sup>		Finish <sup>16</sup>		Lamp <sup>18</sup>
PER	NEMA twist-lock receptacle only (no photocontrol)	EC Emergency circuit <sup>11</sup>	PE1 NEMA twist-lock PE (120, 208, 240V)	<b>(blank)</b> Dark bronze	DNAXD Natural aluminum	LPI Lamp included
SF	Single fuse (120, 277, 347V) n/a TB <sup>10</sup>	CSA CSA Certified	PE3 NEMA twist-lock PE (347V)	DWH White	DWHXD White	L/LP Less lamp
DF	Double fuse (208, 240, 480V) n/a TB <sup>10</sup>	NOM NOM Certified <sup>6</sup>	PE4 NEMA twist-lock PE (480V)	DBL Black	DBBTD Textured dark bronze	 <small>Consistent with LEED<sup>®</sup> goals &amp; GreenSource<sup>™</sup> or Greenguard<sup>™</sup> for light pollution reduction</small>
QRS	Quartz restrrike system <sup>11</sup>	INTL Available for MH probe-start shipping outside the U.S.	PE7 NEMA twist-lock PE (277V)	DMA Medium bronze	DBLBXD Textured black	
QRST	QRS time delay <sup>6,11</sup>	KW1 KiloWatch <sup>®</sup> 120V control relay <sup>12</sup>	SC Shorting cap for PER option	DNA Natural aluminum	DNATXD Textured natural aluminum	
		KW4 KiloWatch <sup>®</sup> 277V control relay <sup>12</sup>	HS House side shield (R2, R3) <sup>14,15</sup>	CRT Non-stick protective coating <sup>17</sup>	DNATXD Textured natural aluminum	
		REGC1 California Title 20 effective 1/1/2010	VG Vandal guard <sup>14</sup>	<u>Super Durable Finishes</u>	DWHGXD Textured white	
				DDBXD Dark bronze		
				DBLXD Black		

Accessories: Tenon Mounting Slipfitter						
Number of fixtures.						
Tenon O.D.	One	Two@180°	Two@90° <sup>19</sup>	Three@120°	Three@90° <sup>19</sup>	Four@90° <sup>19</sup>
2-3/8" (6)	T20-190	T20-280	T20-290	T20-320	T20-390	T20-490
2-7/8" (7.3)	T25-190	T25-280	T25-290	T25-320	T25-390	T25-490
4" (10.2)	T35-190	T35-280	T35-290	T35-320	T35-390	T35-490

#### Notes

- These wattages require the REGC1 option to be chosen for shipments into California for Title 20 compliance. 250M REGC1 is not available in 347V or 480V.
- Use reduced jacketed lamp.
- Must be ordered with SCWA.
- These wattages do not comply with California Title 20 regulations.
- Not available with SCWA.
- Must specify CWI for use in Canada.
- Optional multi-tap ballast (120, 208, 240, 277V); (120, 277, 347V in Canada).
- Consult factory for available wattages.
- Use 9" arm when two or more luminaires are oriented on a 90° drilling pattern.
- Must specify voltage. Not available with TB.
- Maximum allowable wattage lamp included.
- KiloWatch<sup>®</sup> controls are available only with 250S or 400S.
- May be ordered as an accessory.
- Prefix with KSF2 when ordering as an accessory.
- Available with R2 and R3 distributions only.
- See [www.lithonia.com/archcolors](http://www.lithonia.com/archcolors) for additional color options.
- Black finish only.
- Must be specified.
- Must use RP09 or RP12.

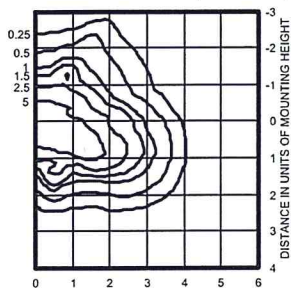
# KSF2 Arm-Mounted Rectilinear Cutoff Lighting

## Coefficient of Utilization

### Initial Footcandles

KSF2 400M R2 TEST NO: 1193031801P

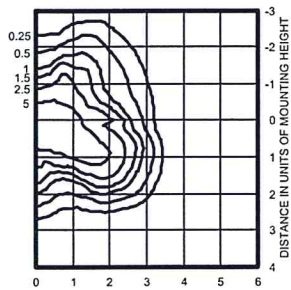
ISOILLUMINANCE PLOT (Footcandle)



400W pulse start metal halide lamp, rated 38000 lumens. Footcandle values based on 20' mounting height.  
Classification: Type II, Short, Full Cutoff

KSF2 400M R3 TEST NO: 1194100501P

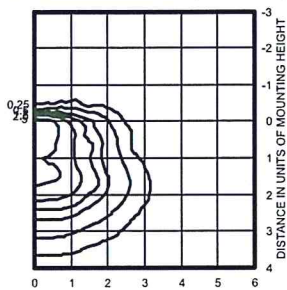
ISOILLUMINANCE PLOT (Footcandle)



400W pulse start metal halide lamp, rated 38000 lumens. Footcandle values based on 20' mounting height.  
Classification: Type III, Short, Full Cutoff

KSF2 400M R4SC TEST NO: 1193041301P

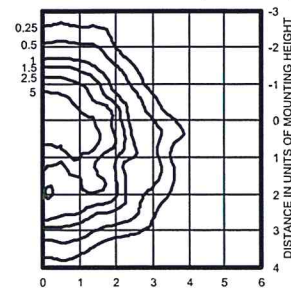
ISOILLUMINANCE PLOT (Footcandle)



400W pulse start metal halide lamp, rated 38000 lumens. Footcandle values based on 20' mounting height.  
Classification: Unclassified (Type IV, Very Short), Full Cutoff

KSF2 400M R4W TEST NO: LTL8509P

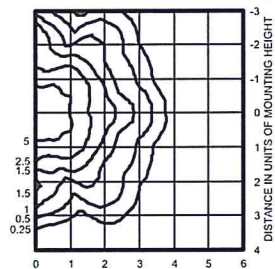
ISOILLUMINANCE PLOT (Footcandle)



400W pulse start metal halide lamp, rated 38000 lumens. Footcandle values based on 20' mounting height.  
Classification: Type IV, Short, Full Cutoff

KSF2 400M R5S TEST NO: 1193051801P

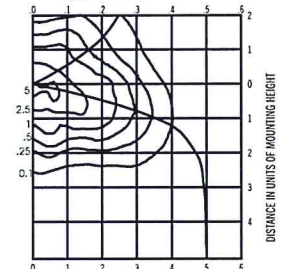
ISOILLUMINANCE PLOT (Footcandle)



400W pulse start metal halide lamp, rated 38000 lumens. Footcandle values based on 20' mounting height.  
Classification: Unclassified (Type IV, Very Short), Full Cutoff

KSF2 400S R2 Test No. 1193031601

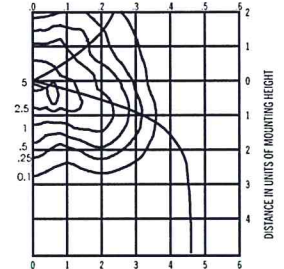
COEFFICIENT OF UTILIZATION



400W High Pressure Sodium lamp, 50000 rated lumens. Footcandle values based on 35' mounting height, Distribution II, cutoff.

KSF2 400S R3 Test No. TEST NO. 1194091501

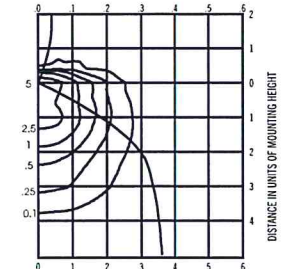
COEFFICIENT OF UTILIZATION



400W High Pressure Sodium lamp, rated lumens. Footcandle values based on 35' mounting height, Distribution II, cutoff.

KSF2 400S R4SC Test No. 1193042201

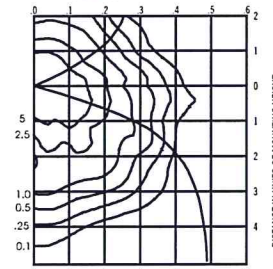
COEFFICIENT OF UTILIZATION



400W High Pressure Sodium lamp, 50000 rated lumens. Footcandle values based on 35' mounting height, Distribution IV, sharp cutoff.

KSF2 400S R4W Test No. LTL8506

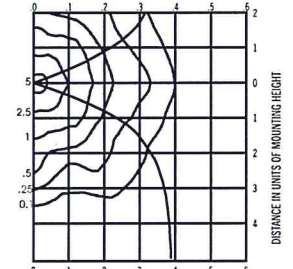
COEFFICIENT OF UTILIZATION



400W High Pressure Sodium lamp, 50000 rated lumens. Footcandle values based on 20' mounting height, Distribution IV wide, froward thro. .

KSF2 400S R5S Test No. 1193051704

COEFFICIENT OF UTILIZATION



400W High Pressure Sodium lamp, 50000 rated lumens. Footcandle values based on 35' mounting height, Distribution V, cutoff.

#### NOTES:

- 1 Photometric data for other distributions can be accessed from the Lithonia Lighting website. ([www.Lithonia.com](http://www.Lithonia.com))
- 2 For electrical characteristics, consult outdoor technical data specification sheets on [www.Lithonia.com](http://www.Lithonia.com).
- 3 Tested to current IES and NEMA standards under stabilized laboratory conditions. Various operating factors can cause differences between laboratory and actual field measurements. Dimensions and specifications are based on the most current available data and are subject to change.

#### Mounting Height Correction Factor

(Multiply the fc level by the correction factor)

35' mounting height	20' mounting height
15 ft.= 5.4	15 ft.= 1.78
30 ft.= 1.36	30 ft.= 0.45
40 ft.= 0.77	40 ft.= 0.25

$$\left( \frac{\text{Existing Mounting Height}}{\text{New Mounting Height}} \right)^2 = \text{Correction Factor}$$



## FEATURES & SPECIFICATIONS

**INTENDED USE** — Ideal for car lots, street lighting or parking areas.

**CONSTRUCTION** — Rugged, .063" thick, aluminum rectilinear housing. Formed for weather-tight seal and integrity. Naturally anodized, extruded aluminum door frame with mitered corners, is retained with two .188" diameter hinge pins and secured with one quarter-turn, quick-release fastener. Weatherproof seal between housing and door frame is accomplished with an integrally designed, extruded silicone gasket that snaps into the door frame, and another gasket applied to the housing.

Finish: Standard finish is dark bronze (DDB), polyester powder finish with other architectural colors available.

**OPTICS** — Reflectors are anodized and segmented for superior uniformity and control. Reflectors attach with tool-less fasteners and are rotatable and interchangeable. Five cutoff distributions available: Type II (roadway), Type III (asymmetric), Type IV (forward throw, sharp cutoff), Type IV (wide, forward throw), Type V (square). Lens is .125" thick impact-resistant tempered glass with thermally applied silk-screened shield.

**ELECTRICAL** — Ballast: Constant wattage autotransformer for 250-400W. Super CWA pulse-start ballast required for 320W and 350W (SCWA option). Super CWA (pulse start ballast), 88% efficient and EISA legislation compliant, is required for 250-400W (SCWA option) for U.S. shipments only. CSA or INTL required for probe-start shipments outside the U.S.

Ballasts are 100% factory-tested.

Socket is porcelain, horizontally mounted mogul base socket with copper alloy, nickel-plated screw shell and center contact. UL listed 1500W-600V.

**INSTALLATION** — Extruded aluminum arm for pole or wall mounting is shipped in fixture carton. Optional mountings available.

**LISTING** — UL listed (standard). CSA Certified (see Options). NOM Certified (see Options). UL listed for 25°C ambient temperature and wet locations. IP65 rated.

**WARRANTY** — 1-year limited warranty. Complete warranty terms located at

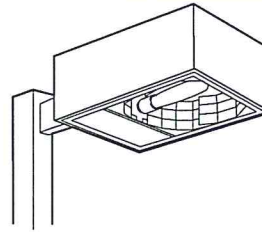
[www.acuitybrands.com/CustomResources/Terms\\_and\\_conditions.aspx](http://www.acuitybrands.com/CustomResources/Terms_and_conditions.aspx)

Note: Specifications subject to change without notice.

Catalog Number **KSF2 R3 277 SP06**

Notes **Pole Mounted**

Type **B1, B2**



Specifications

EPA: 2.0 ft<sup>2</sup> (.28 m<sup>2</sup>)

(includes arm)

Length: 24-19/32 (62.5)

Width: 17-25/32 (62.5)

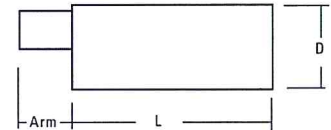
Depth: 8-5/16 (21.1)

Arm: 4 (10.2)

\*Weight: 52 lbs (23.6 kg)

\*Weight as configured in example below.

All dimensions are inches (centimeters) unless otherwise specified.



Mounting option

Drilling template

SPxx, RPxx, DA12P

5

WBxx, DA12WB

6

WWxx

7

Area Lighting

# KSF2

METAL HALIDE: 250-400W

HIGH PRESSURE SODIUM: 200-400W

15' to 25' Mounting

### ORDERING INFORMATION

For shortest lead times, configure product using **bolded options**.

**Example: KSF2 400M R3 TB SCWA SP04 LPI**

KSF2	400M	R3	277		SP06		
Series	Wattage	Distribution	Voltage	Ballast	Mounting		
KSF2	<u>Metal halide</u>	R2 Type II roadway	120 347	(blank) Magnetic	<u>Type</u>	<u>Arm length<sup>9</sup></u>	<u>Shipped separately</u>
	250M <sup>1</sup> 350M <sup>2,3,4</sup>	R3 Type III asymmetric	208 <sup>6</sup> 480 <sup>6</sup>	CWI Contant wattage isolated	SP__ Square pole	04 4" arm	DA12P Degree arm, pole
	320M <sup>2,3</sup> 400M <sup>1,2</sup>	R45C Type IV forward throw, sharp cutoff	240 <sup>6</sup> TB <sup>7</sup>	Pulse Start	RP__ Round pole	06 6" arm	DA12WB Degree arm, wall
	<u>High pressure sodium<sup>5</sup></u>	R4W Type IV wide, forward throw	277 23050HZ <sup>8</sup>	SCWA	WB__ Wall bracket	09 9" arm	KMA Mast arm adapter
	200S 400S 250S	R5S Type V square		NOTE: For shipments to U.S. territories, SCWA must be specified to comply with EISA.	WW__ Wood pole or wall bracket	12 12" arm	KTMB Twin mounting bar

Options				Finish <sup>16</sup>			Lamp <sup>18</sup>	
<u>Shipped installed in fixture</u>		EC Emergency circuit <sup>11</sup>	<u>Shipped separately<sup>13</sup></u>		(blank) Dark bronze	DNAXD Natural aluminum	LPI Lamp included	
PER NEMA twist-lock receptacle only (no photocontrol)	CSA CSA Certified	PE1 NEMA twist-lock PE (120, 208, 240V)	DWH White	DNAXD Natural aluminum	DWHXD White	L/LP Less lamp		
SF Single fuse (120, 277, 347V) n/a TB <sup>10</sup>	NOM NOM Certified <sup>8</sup>	PE3 NEMA twist-lock PE (347V)	DBL Black	DDBTXD Textured dark bronze	DDBTXD Textured dark bronze			
DF Double fuse (208, 240, 480V) n/a TB <sup>10</sup>	INTL Available for MH probe-start shipping outside the U.S.	PE4 NEMA twist-lock PE (480V)	DMB Medium bronze	DBLBXD Textured black	DBLBXD Textured black			
QRS Quartz restrike system <sup>11</sup>	KW1 KiloWatch® 120V control relay <sup>12</sup>	PE7 NEMA twist-lock PE (277V)	DNA Natural aluminum	DNATXD Textured natural aluminum	DNATXD Textured natural aluminum			
QRSTD QRS time delay <sup>6,11</sup>	KW4 KiloWatch® 277V control relay <sup>12</sup>	SC Shorting cap for PER option	CRT Non-stick protective coating <sup>17</sup>	DWHGXD Textured white	DWHGXD Textured white			
	REGC1 California Title 20 effective 1/1/2010	HS House side shield (R2, R3) <sup>14,15</sup>	<u>Super Durable Finishes</u>					
		VG Vandal guard <sup>14</sup>	DDBXD Dark bronze					
			DBLXD Black					

Accessories: Tenon Mounting Slipfitter						
Number of fixtures.						
Tenon O.D.	One	Two@180°	Two@90° <sup>19</sup>	Three@120°	Three@90° <sup>19</sup>	Four@90° <sup>19</sup>
2-3/8" (6)	T20-190	T20-280	T20-290	T20-320	T20-390	T20-490
2-7/8" (7.3)	T25-190	T25-280	T25-290	T25-320	T25-390	T25-490
4" (10.2)	T35-190	T35-280	T35-290	T35-320	T35-390	T35-490

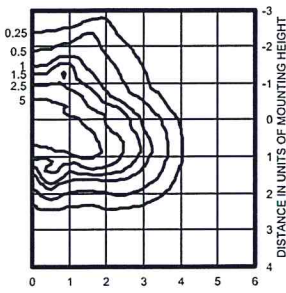
#### Notes

- These wattages require the REGC1 option to be chosen for shipments into California for Title 20 compliance. 250M REGC1 is not available in 347V or 480V.
- Use reduced jacketed lamp.
- Must be ordered with SCWA.
- These wattages do not comply with California Title 20 regulations.
- Not available with SCWA.
- Must specify CWI for use in Canada.
- Optional multi-tap ballast (120, 208, 240, 277V); (120, 277, 347V in Canada).
- Consult factory for available wattages.
- Use 9" arm when two or more luminaires are oriented on a 90° drilling pattern.
- Must specify voltage. Not available with TB.
- Maximum allowable wattage lamp included.
- KiloWatch® controls are available only with 250S or 400S.
- May be ordered as an accessory.
- Prefix with KSF2 when ordering as an accessory.
- Available with R2 and R3 distributions only.
- See [www.lithonia.com/archcolors](http://www.lithonia.com/archcolors) for additional color options.
- Black finish only.
- Must be specified.
- Must use RP09 or RP12.

# KSF2 Arm-Mounted Rectilinear Cutoff Lighting

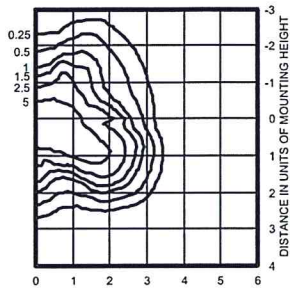
## Coefficient of Utilization Initial Footcandles

KSF2 400M R2 TEST NO: 1193031801P  
ISOILLUMINANCE PLOT (Footcandle)



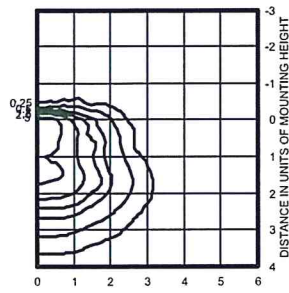
400W pulse start metal halide lamp, rated 38000 lumens. Footcandle values based on 20' mounting height.  
Classification: Type II, Short, Full Cutoff

KSF2 400M R3 TEST NO: 1194100501P  
ISOILLUMINANCE PLOT (Footcandle)



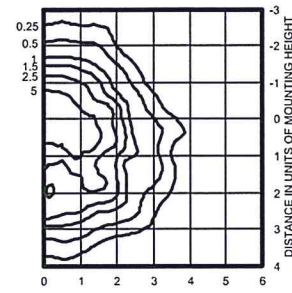
400W pulse start metal halide lamp, rated 38000 lumens. Footcandle values based on 20' mounting height.  
Classification: Type III, Short, Full Cutoff

KSF2 400M R4SC TEST NO: 1193041301P  
ISOILLUMINANCE PLOT (Footcandle)



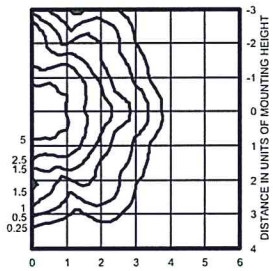
400W pulse start metal halide lamp, rated 38000 lumens. Footcandle values based on 20' mounting height.  
Classification: Unclassified (Type IV, Very Short), Full Cutoff

KSF2 400M R4W TEST NO: LTL8509P  
ISOILLUMINANCE PLOT (Footcandle)



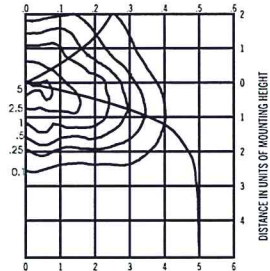
400W pulse start metal halide lamp, rated 38000 lumens. Footcandle values based on 20' mounting height.  
Classification: Type IV, Short, Full Cutoff

KSF2 400M R5S TEST NO: 1193051801P  
ISOILLUMINANCE PLOT (Footcandle)



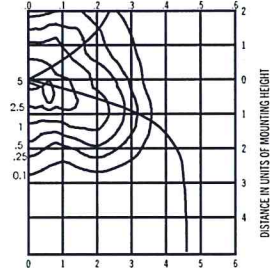
400W pulse start metal halide lamp, rated 38000 lumens. Footcandle values based on 20' mounting height.  
Classification: Unclassified (Type IV, Very Short), Full Cutoff

KSF2 400S R2 Test No. 1193031601  
COEFFICIENT OF UTILIZATION



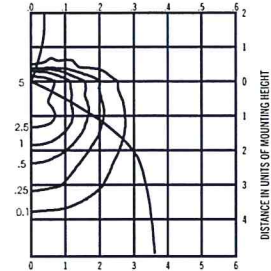
400W High Pressure Sodium lamp, 50000 rated lumens. Footcandle values based on 35' mounting height, Distribution II, cutoff.

KSF2 400S R3 Test No. TEST NO. 1194091501  
COEFFICIENT OF UTILIZATION



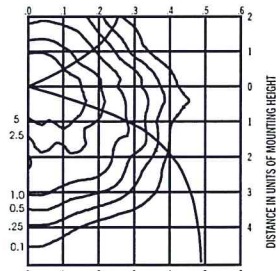
400W High Pressure Sodium lamp, rated lumens. Footcandle values based on 35' mounting height, Distribution II, cutoff.

KSF2 400S R4SC Test No. 1193042201  
COEFFICIENT OF UTILIZATION



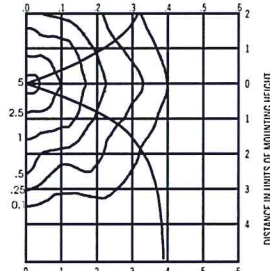
400W High Pressure Sodium lamp, 50000 rated lumens. Footcandle values based on 35' mounting height, Distribution IV, sharp cutoff.

KSF2 400S R4W Test No. LTL8506  
COEFFICIENT OF UTILIZATION



400W High Pressure Sodium lamp, 50000 rated lumens. Footcandle values based on 20' mounting height, Distribution IV wide, forward throw.

KSF2 400S R5S Test No. 1193051704  
COEFFICIENT OF UTILIZATION



400W High Pressure Sodium lamp, 50000 rated lumens. Footcandle values based on 35' mounting height, Distribution V, cutoff.

### NOTES:

- 1 Photometric data for other distributions can be accessed from the Lithonia Lighting website. ([www.Lithonia.com](http://www.Lithonia.com))
- 2 For electrical characteristics, consult outdoor technical data specification sheets on [www.Lithonia.com](http://www.Lithonia.com).
- 3 Tested to current IES and NEMA standards under stabilized laboratory conditions. Various operating factors can cause differences between laboratory and actual field measurements. Dimensions and specifications are based on the most current available data and are subject to change.

### Mounting Height Correction Factor

(Multiply the fc level by the correction factor)

35' mounting height	20' mounting height
15 ft. = 5.4	15 ft. = 1.78
30 ft. = 1.36	30 ft. = 0.45
40 ft. = 0.77	40 ft. = 0.25

$$\left( \frac{\text{Existing Mounting Height}}{\text{New Mounting Height}} \right)^2 = \text{Correction Factor}$$



## FEATURES & SPECIFICATIONS

**INTENDED USE** — Square straight steel pole for up to 39-foot mounting height.

**CONSTRUCTION** — Weldable-grade, hot-rolled, commercial-quality carbon steel tubing with a minimum yield of 55,000 psi (11-gauge), or 50,000 psi (7-gauge). Uniform wall thickness of .1196" or .1793". Shaft is one-piece with a full-length longitudinal high-frequency electric resistance weld. Uniformly square in cross-section with flat sides, small corner radii and excellent torsional qualities. Available shaft widths are 4, 5 and 6 inches.

Anchor base is fabricated from hot-rolled carbon steel plate conforming to ASTM A36, that meets or exceeds a minimum-yield strength of 36,000 psi. Base plate and shaft are circumferentially welded top and bottom. Base cover is finished to match pole.

A handhole having nominal dimensions of 3" x 5" for all shafts. Included is a cover with attachment screws.

Top cap provided with all drill-mount and open top "PT" poles.

Fasteners are high-strength galvanized, zinc-plated or stainless steel.

Finish: Must specify finish.

Grounding: Provision located immediately inside handhole rim. Grounding hardware is not included (provided by others).

Anchor bolts: Top portion of anchor bolt is galvanized per ASTM A-153. Made of steel rod having a minimum yield strength of 55,000 psi.

Note: Specifications subject to change without notice.

Actual performance may differ as a result of end-user environment and application.

Catalog Number	SSS 25 4G DM19/DM29 DDB
Notes	25' Tall Pole
Type	B1, B2, C



Anchor Base Poles

SSS

SQUARE STRAIGHT STEEL

### ORDERING INFORMATION

Lead times will vary depending on options selected. Consult with your sales representative.

Example: SSS 20 5C DM19 DDB

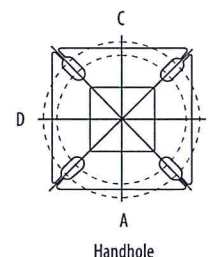
SSS	25	4G	DM19/DM29		DDB	
Series	Nominal fixture mounting height	Nominal shaft base size/wall thickness	Mounting <sup>1</sup>	Options	Finish <sup>10</sup>	
SSS	10 – 39 feet (See back page.)	(See back page.)	<p><b>Tenon mounting</b></p> <p>PT Open top (includes top cap)</p> <p>T20 2-3/8" O.D. (2" NPS)</p> <p>T25 2-7/8" O.D. (2-1/2" NPS)</p> <p>T30 3-1/2" O.D. (3" NPS)</p> <p>T35 4" O.D. (3-1/2" NPS)</p> <p><b>Drill mounting<sup>2</sup></b></p> <p>DM19 1 at 90°</p> <p>DM28 2 at 180°</p> <p>DM28 PL 2 at 180° with one side plugged</p> <p>DM29 2 at 90°</p> <p>DM39 3 at 90°</p> <p>DM49 4 at 90°</p> <p><b>CSX/DSX/AERIS™/OMERO™ Drill mounting<sup>2</sup></b></p> <p>DM19AS 1 at 90°</p> <p>DM28AS 2 at 180°</p> <p>DM29AS 2 at 90°</p> <p>DM39AS 3 at 90°</p> <p>DM49AS 4 at 90°</p>	<p><b>AERIS™ Suspend drill mounting<sup>2,3</sup></b></p> <p>DM19AST_ 1 at 90°</p> <p>DM28AST_ 2 at 180°</p> <p>DM29AST_ 2 at 90°</p> <p>DM39AST_ 3 at 90°</p> <p>DM49AST_ 4 at 90°</p> <p><b>OMERO™ Suspend drill mounting<sup>2,3</sup></b></p> <p>DM19MRT_ 1 at 90°</p> <p>DM28MRT_ 2 at 180°</p> <p>DM29MRT_ 2 at 90°</p> <p>DM39MRT_ 3 at 90°</p> <p>DM49MRT_ 4 at 90°</p>	<p><b>Shipped installed</b></p> <p>L/AB Less anchor bolts</p> <p>VD Vibration damper</p> <p>TP Tamper proof</p> <p>H1-18Sxx Horizontal arm bracket (1 fixture)<sup>4,5</sup></p> <p>FDLxx Festoon outlet less electrical<sup>4</sup></p> <p>CPL12xx 1/2" coupling<sup>4</sup></p> <p>CPL34xx 3/4" coupling<sup>4</sup></p> <p>CPL1xx 1" coupling<sup>4</sup></p> <p>NPL12xx 1/2" threaded nipple<sup>4</sup></p> <p>NPL34xx 3/4" threaded nipple<sup>4</sup></p> <p>NPL1xx 1" threaded nipple<sup>4</sup></p> <p>EHHxx Extra handhole<sup>4,6</sup></p> <p>MAEX Match existing<sup>7</sup></p> <p>USPOM United States point of manufacture<sup>8</sup></p> <p>IC Interior coating<sup>9</sup></p>	<p><b>Standard colors</b></p> <p>DDB Dark bronze</p> <p>DWH White</p> <p>DBL Black</p> <p>DMB Medium bronze</p> <p>DNA Natural aluminum</p> <p><b>Classic colors</b></p> <p>DSS Sandstone</p> <p>DGC Charcoal gray</p> <p>DTG Tennis green</p> <p>DBR Bright red</p> <p>DSB Steel blue</p> <p><b>Architectural colors (powder finish)<sup>10</sup></b></p>

#### NOTES:

- PT open top poles include top cap. When ordering tenon mounting and drill mounting for the same pole, follow this example: DM28/T20. The combination includes a required extra handhole.
- The drilling template to be used for a particular luminaire depends on the luminaire that is used. Refer to the Technical Data Section of the Outdoor Binder for Drilling Templates.
- Insert "1" or "2" to designate fixture size; e.g. DM19AST2.
- Specify location and orientation when ordering option.  
For 1st "x": Specify the height in feet above base of pole.  
Example: 5ft = 5 and 20ft = 20  
For 2nd "x": Specify orientation from handhole (A,B,C,D)  
Refer to the Handhole Orientation diagram above.

- Horizontal arm is 18" x 2-3/8" O.D. tenon standard.
- Combination of tenon-top and drill mount includes extra handhole.
- Must add original order number
- Use when mill certifications are required.
- Provides enhanced corrosion resistance.
- Additional colors available; see www.lithonia.com/archcolors or Architectural Colors brochure (Form No. 794.3). Powder finish standard.

#### HANDHOLE ORIENTATION



#### IMPORTANT INSTALLATION NOTES:

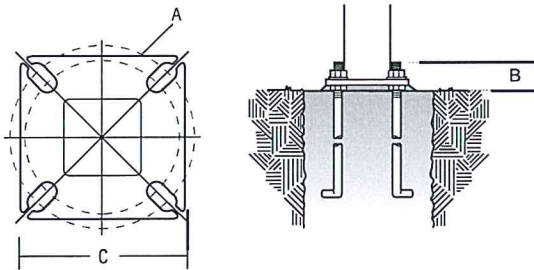
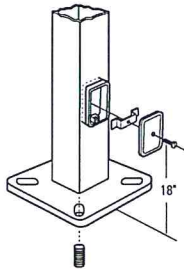
- Do not erect poles without having fixtures installed.
- Factory-supplied templates must be used when setting anchor bolts. Lithonia Lighting will not accept claim for incorrect anchorage placement due to failure to use Lithonia Lighting factory templates.
- If poles are stored outside, all protective wrapping must be removed immediately upon delivery to prevent finish damage.
- Lithonia Lighting is not responsible for the foundation design.

# SSS Square Straight Steel Poles

TECHNICAL INFORMATION													
Catalog Number	Nominal mount ht. (ft)	Pole Shaft Size (in x ft)	Wall Thickness (in)	Gauge	EPA (ft <sup>2</sup> ) with 1.3 gust						Bolt Circle (in)	Bolt Size (in x in x in)	Approximate ship (lbs)
					80 mph	Max. weight	90 mph	Max. weight	100 mph	Max. weight			
SSS 10 4C	10	4.0 x 10.0	0.1196	11	30.6	765	23.8	595	18.9	473	8-9	3/4 x 18 x 3	75
SSS 12 4C	12	4.0 x 12.0	0.1196	11	24.4	610	18.8	470	14.8	370	8-9	3/4 x 18 x 3	90
SSS 14 4C	14	4.0 x 14.0	0.1196	11	19.9	498	15.1	378	11.7	293	8-9	3/4 x 18 x 3	100
SSS 16 4C	16	4.0 x 16.0	0.1196	11	15.9	398	11.8	295	8.9	223	8-9	3/4 x 18 x 3	115
SSS 18 4C	18	4.0 x 18.0	0.1196	11	12.6	315	9.2	230	6.7	168	8-9	3/4 x 18 x 3	125
SSS 20 4C	20	4.0 x 20.0	0.1196	11	9.6	240	6.7	167	4.5	150	8-9	3/4 x 18 x 3	140
SSS 20 4G	20	4.0 x 20.0	0.1793	7	14	350	11	275	8	200	8-9	3/4 x 30 x 3	198
SSS 20 5C	20	5.0 x 20.0	0.1196	11	17.7	443	12.7	343	9.4	235	10-12	1 x 36 x 4	185
SSS 20 5G	20	5.0 x 20.0	0.1793	7	28.1	703	21.4	535	16.2	405	10-12	1 x 36 x 4	265
SSS 25 4C	25	4.0 x 25.0	0.1196	11	4.8	150	2.6	100	1	50	8-9	3/4 x 18 x 3	170
SSS 25 4G	25	4.0 x 25.0	0.1793	7	10.8	270	7.7	188	5.4	135	8-9	3/4 x 30 x 3	245
SSS 25 5C	25	5.0 x 25.0	0.1196	11	9.8	245	6.3	157	3.7	150	10-12	1 x 36 x 4	225
SSS 25 5G	25	5.0 x 25.0	0.1793	7	18.5	463	13.3	333	9.5	238	10-12	1 x 36 x 4	360
SSS 30 4G	30	4.0 x 30.0	0.1793	7	6.7	168	4.4	110	2.6	65	8-9	3/4 x 30 x 3	295
SSS 30 5C	30	5.0 x 30.0	0.1196	11	4.7	150	2	50	--	--	10-12	1 x 36 x 4	265
SSS 30 5G	30	5.0 x 30.0	0.1793	7	10.7	267	6.7	167	3.9	100	10-12	1 x 36 x 4	380
SSS 30 6G	30	6.0 x 30.0	0.1793	7	19	475	13.2	330	9	225	11-13	1 x 36 x 4	520
SSS 35 5G	35	5.0 x 35.0	0.1793	7	5.9	150	2.5	100	--	--	10-12	1 x 36 x 4	440
SSS 35 6G	35	6.0 x 35.0	0.1793	7	12.4	310	7.6	190	4.2	105	11-13	1 x 36 x 4	540
SSS 39 6G	39	6.0 x 39.0	0.1793	7	7.2	180	3	75	--	--	11-13	1 x 36 x 4	605

POLE DATA						
Shaft base size	Bolt circle A	Bolt projection B	Base square C	Template description	Anchor bolt description	Anchor bolt and template number
4"C	8-1/2"	2-3/4"-4"	8"	ABTEMPLATE PJ50004	AB18-0	ABSSS-4C
4"G	8-1/2"	2-3/4"-4"	8"	ABTEMPLATE PJ50004	AB30-0	ABSSS-4G
5"	10"-12"	3-3/8"-4"	11"	ABTEMPLATE PJ50010	AB36-0	ABSSS-5
6"	11"-13"	3-3/8"-4"	12-1/2"	ABTEMPLATE PJ50011	AB36-0	N/A

## BASE DETAIL



### IMPORTANT:

• These specifications are intended for general purposes only. Lithonia reserves the right to change material or design, without prior notice, in a continuing effort to upgrade its products.