

Bid 22-02
East New York Street Water Main Replacement
Bid opening: January 26, 2022

ADDENDUM NO. 1
Page 1 of 4

TO: All Bidders

FROM: Engineering Division, City of Aurora

DATE: January 24, 2022

THIS ADDENDUM FORMS A PART OF THE BIDDING AND CONTRACT DOCUMENTS.

1. Preliminary CCDD findings indicated Non-Special Waste Disposal at a landfill for soil disposal of excavations from approximately station 160+00 to 164+50 associated with soil boring 2 as shown in the attached Figure 3 – Exclusion Zone Map. The remaining soil sample locations are expected to fall under an LPC-663 for CCDD disposal.
2. A revised bid schedule is attached to increase the quantity of pay item 66 for Non-Special Waste Disposal.

Sincerely,



John D. Hoffmann, P.E.
Engineering Coordinator
City of Aurora Engineering Division

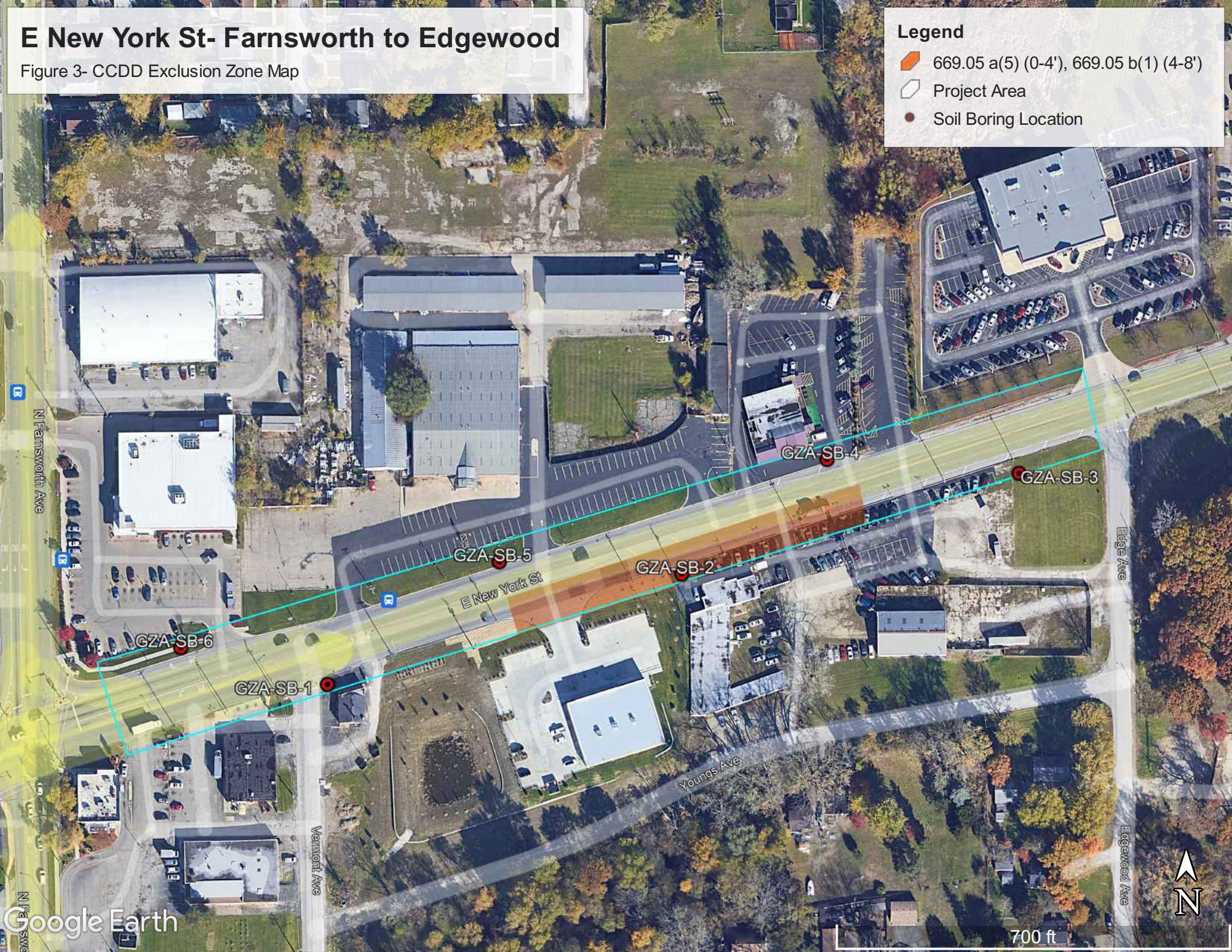
PLEASE ACKNOWLEDGE RECEIPT OF THIS ADDENDUM BY FILLING OUT THE FOLLOWING AND SENDING AN ORIGINAL OR FAX COPY OF THIS SHEET TO THE CITY OF AURORA ENGINEERING DIVISION AT 630/256-3229 OR PREFERRABLY BY E-MAIL AT hoffmannj@aurora.il.us IMMEDIATELY UPON RECIEPT.

COMPANY NAME_____

SIGNATURE OF COMPANY REPRESENTATIVE_____

E New York St- Farnsworth to Edgewood

Figure 3- CCDD Exclusion Zone Map





Schedule of Prices - Addenda No. 1
East New York Street Water Main Replacement
Bid 22-02

Route	East New York Street
County	Kane
Local Agency	City of Aurora

RETURN WITH BID

(For complete information covering these items, see plans and specifications)

ADDENDUM NO. 1					
NO.	ITEM	UNIT	QUANTITY	UNIT COST	AMOUNT
1	Abandon Valve Box	EA	16		
2	Abandon Valve Vault	EA	14		
3	Select Granular Trench Backfill	CY	3,600		
4	Unsuitable Soil Removal and Replacement	CY	120		
5	Exploration Excavation, 8 Ft	LF	100		
6	Exploration Excavation, 10 Ft	LF	15		
7	Restrained Joint Gasket, 6"	EA	2		
8	Restrained Joint Gasket, 8"	EA	20		
9	Restrained Joint Gasket, 12"	EA	16		
10	Zinc Coated DIP WM, CI 52, 6" w/V-bio Polywrap	LF	149		
11	Zinc Coated DIP WM, CI 52, 8" w/V-bio Polywrap	LF	3,343		
12	Zinc Coated DIP WM, CI 52, 12" w/V-bio Polywrap	LF	1,559		
13	6" MJ Gate Valve in 48" Vault	EA	1		
14	8" MJ Gate Valve in 48" Vault	EA	11		
15	12" MJ Gate Valve in 60" Vault	EA	5		
16	8" MJ Gate Valve w/Valve Box	EA	1		
17	12" MJ Gate Valve w/Valve Box	EA	1		
18	Temporary 12" MJ Cap w/ 3 - 2" Whips & Removal	EA	1		
19	Fire Hydrant Assembly Removal	EA	11		
20	Fire Hydrant Assembly	EA	14		
21	Sanitary Service Removal and Replacement, 6" PVC C-900	LF	70		
22	1" Dia. Curb Stop & B-box	EA	47		
23	1.5" Dia. Curb Stop & B-box	EA	1		
24	2" Dia. Curb Stop & B-box	EA	2		
25	1" Dia. Tap and Corp Stop	EA	47		
26	1.5" Dia. Tap and Corp Stop	EA	1		
27	2" Dia. Tap and Corp Stop	EA	2		
28	1" Water Service, Trenchless	LF	3,360		
29	1.5" Water Service, Trenchless	LF	72		
30	2" Water Service, Trenchless	LF	225		
31	Connect to Existing 6" WM	EA	8		
32	Connect to Existing 8" WM	EA	1		
33	Connect to Existing 12" WM	EA	5		
34	Water Main Cold Weather Protection	LF	150		
Page 1 Total =					



Schedule of Prices - Addenda No. 1
East New York Street Water Main Replacement
Bid 22-02

Route East New York Street
County Kane
Local Agency City of Aurora

RETURN WITH BID

(For complete information covering these items, see plans and specifications)

ADDENDUM NO. 1					
NO.	ITEM	UNIT	QUANTITY	UNIT COST	AMOUNT
35	Water Main Lowering, 8" DIP CL 52	LF	80		
36	Water Main Lowering, 12" DIP CL 52	LF	25		
37	Temporary Pavement, 2"	SY	900		
38	Class D Patching, N70, 6" Binder (Sta 163+50 to East Connection)	SY	300		
39	Class D Patching, N70, 5.5" Binder, 1.5" Surface (Trask to Calhoun Side Roads)	SY	150		
40	Class D Patching, N70, 16" Binder (Ohio to Calhoun; Farnsworth to Sta 163+50)	SY	3,900		
41	Class D Patching, N70, 14.5" Binder, 1.5" Surface (Calhoun to Farnsworth)	SY	450		
42	Sawcut, Full Depth (for Patching)	LF	11,000		
43	Combination PCC Curb and Gutter Removal and Replacement	LF	100		
44	Combination PCC Curb and Gutter Removal, Special	LF	80		
45	PCC Sidewalk Rem. and Replace, 5"	SF	150		
46	PCC Sidewalk Removal, Special	SF	575		
47	PCC Drive Approach Removal & Replacement, 6", Residential	SY	60		
48	PCC Drive Approach Removal & Replacement, 8", Commercial	SY	60		
49	HMA Drive Approach Removal & Replacement, 2", Residential	SY	20		
50	HMA Drive Approach Removal & Replacement, 4", Commercial	SY	110		
51	Brick Driveway Approach Removal and Replacement, Residential	SF	25		
52	Seeding - Aurora Mix	SY	600		
53	Interior Service Connection Allowance	Allowance	1	\$80,000.00	\$80,000.00
54	Items Ordered by Engineer	Allowance	1	\$250,000.00	\$250,000.00
55	Traffic Control and Protection	LS	1		
56	Temporary Pavement Marking, 4" Line, Paint	LF	11,600		
57	Pavement Marking Removal, Grinding	SF	4,500		
58	Thermoplastic Pavement Marking - Letters & Symbols	SF	200		
59	Thermoplastic Pavement Marking - Line 4"	LF	1,500		
60	Thermoplastic Pavement Marking - Line 6"	LF	670		
61	Thermoplastic Pavement Marking - Line 24"	LF	90		
62	Changeable Message Sign	CAL DAY	300		
63	Inlet Protection	EA	40		
64	Dewatering Bag	EA	5		
65	Temporary Staging	CY	50		
66	Non-Special Waste Disposal	TON	800		
67	Special Waste Disposal	TON	100		
Page 2 Total =					
Page 1 Total =					
Bidder's Total Proposal for Making Entire Improvements =					