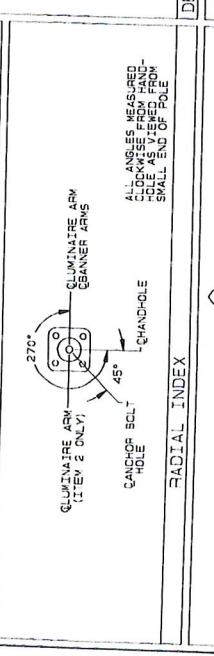
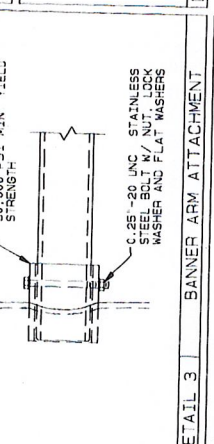
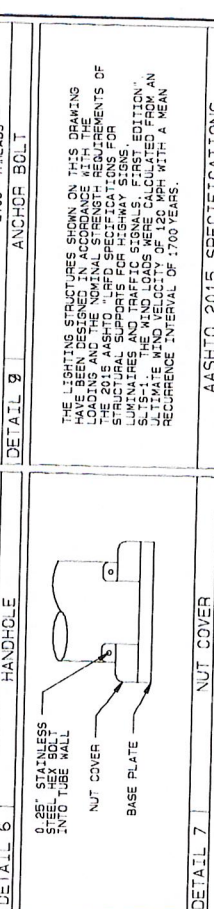
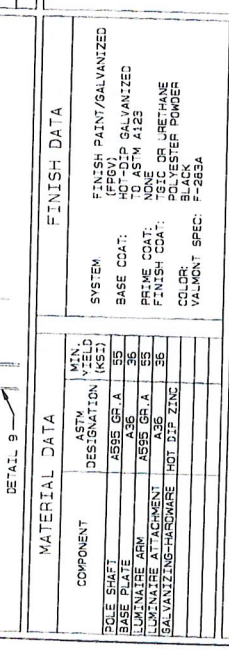
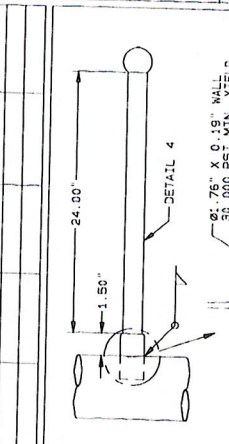
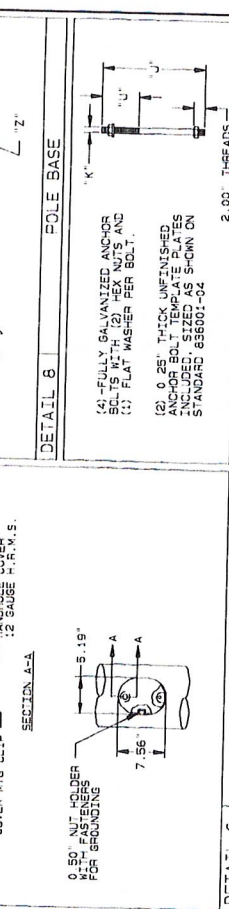
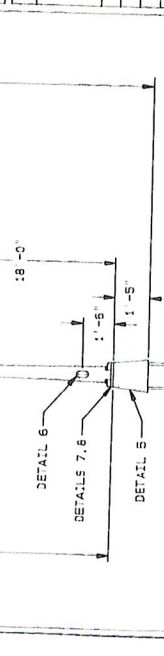
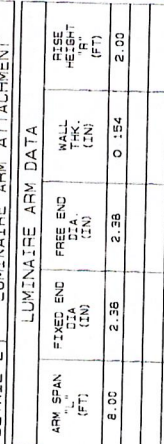
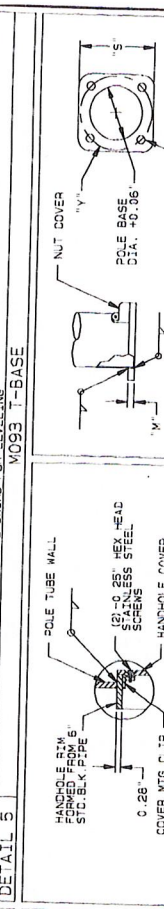
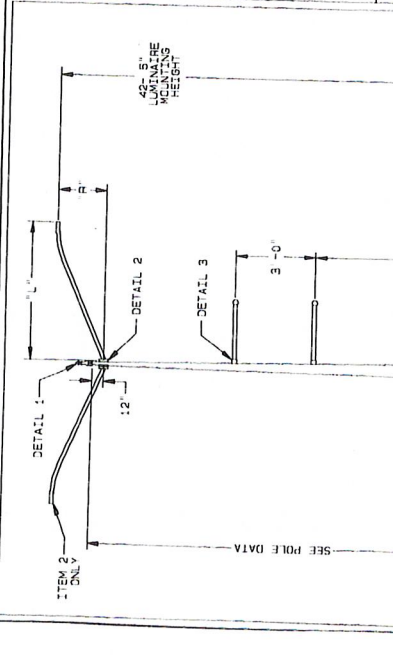
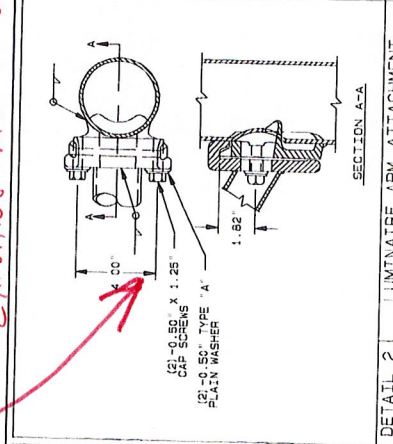
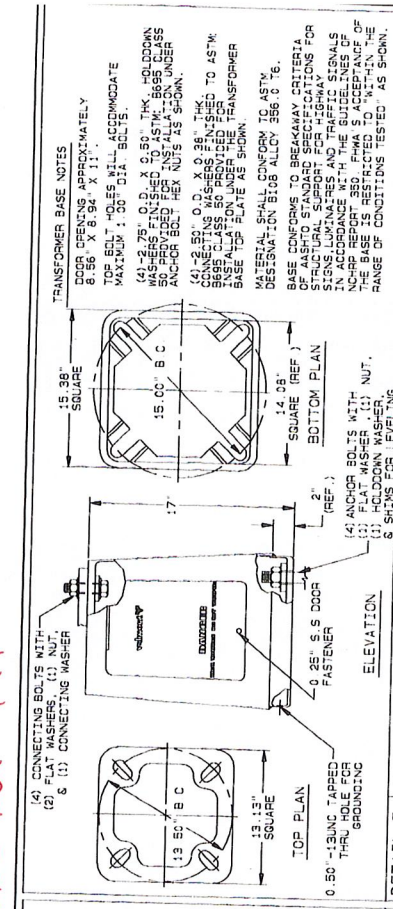


Item Description	City		Alternate		Reason for Award or Alternate Denial
	Standard	Graybar Submittal	Approved	Award	
1 Arm Decorative Pole	Valmont	Spring City	Yes	VSI	Alternate approved; awarding to VSI due to lower pricing
2 Arm Decorative Pole	Valmont	Union Metal	No	VSI	1 bolt vs. 2 bolt davit arm connection
20 Foot Concrete Pole	StressCrete	Traditional Concrete	No	VSI	8 vs. 6 sided fixture; davit arms won't fit and aesthetic issues
Bollard	Sentry	Spring City	Yes	Graybar	Alternate approved
Fixture 1	King	Lumec	Yes	Graybar	Alternate Approved
Fixture 2	LV	NLS	No	VSI	Proposed fixture is different aesthetically than existing
Fixture 3	Sentry	Spring City	Yes	Graybar	Alternate approved

The four green highlighted items were submitted by Graybar for alternate approval during the bid process. They were approved as alternates.

The three red highlighted items were submitted by Graybar without pre-approval. The bid states alternates need to be reviewed and approved prior to bid.

**Current stock is  
All A Z-Bolt configuration  
Existing arms will not fit**



**FINISH DATA**

COMPONENT	ASTM DESIGNATION	MIN. WELD (KSI)	FINISH
POLE SHAFT	A572 GR. A	35	FINISH PAINT/GALVANIZED (FPGV)
BASE PLATE	A572 GR. A	35	HOT-DIP GALVANIZED TO ASTM A123
LUMINAIRE ARM	A572 GR. A	35	PRIME COAT: T80C OR URETHANE POLYESTER PRIMER
LUMINAIRE ATTACHMENT	A572 GR. A	35	FINISH COAT: POLYESTER PRIMER
SALVANTIZING-HARDWARE	HOT DIP ZINC	35	COLOR: BLACK
VALMONT SPEC:	F-2834		

**RADIAL INDEX**

ALL ANGLES MEASURED CLOCKWISE FROM POLE AS VIEWED FROM SMALL END OF POLE

**POLE AND LUMINAIRE ARM DATA**

ITEM	QTY.	BASE DIA. (IN)	TOP DIA. (IN)	LENGTH (FT)	POLE TUBE OR SQUARE (IN)	THK. (IN)	BRIDGE DIA. (IN)	HOLE DIA. (IN)	LUMINAIRE ARM QUANTITY
1	5	9.50	3.90	40.00	11	13.13	13.50	1.25	1.00
2	5	9.50	3.90	40.00	11	13.13	13.50	1.25	1.00

**DETAIL 1 ALHAMBRA CAP**

PROVIDED WITH (3) SET SCREWS.

**DETAIL 1 ALHAMBRA CAP**

**DETAIL 1 ALHAMBRA CAP**

PROVIDED WITH (3) SET SCREWS.

ORDER NUMBER: 440745-P8  
 PAGE NUMBER: 1 OF 1  
 DRAWING NUMBER: IL440745P8

**valmont**  
 VALMONT INDUSTRIES, INC. RESERVES THE RIGHT TO INSTALL VARIOUS ENGINEER APPROVED MATERIAL HANGING ACCORDING TO FACILITATE THE MANUFACTURING PROCESS.  
 VALMONT INDUSTRIES, INC. RESERVES THE RIGHT TO INSTALL VARIOUS ENGINEER APPROVED MATERIAL HANGING ACCORDING TO FACILITATE THE MANUFACTURING PROCESS.  
 VALMONT INDUSTRIES, INC. RESERVES THE RIGHT TO INSTALL VARIOUS ENGINEER APPROVED MATERIAL HANGING ACCORDING TO FACILITATE THE MANUFACTURING PROCESS.

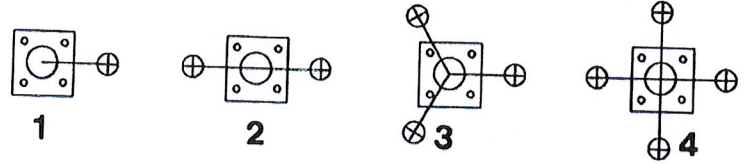
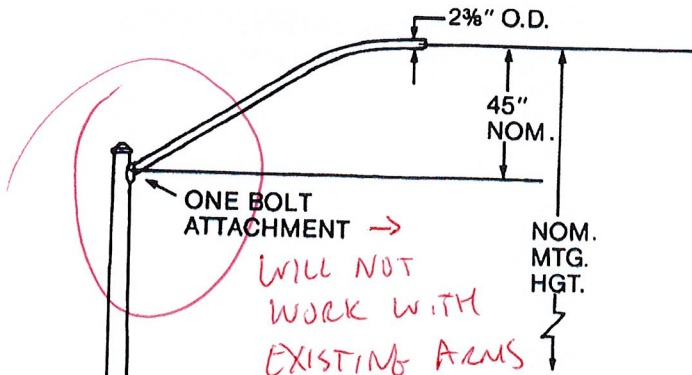
BID #21-45  
 CITY OF AURORA, IL  
 LIGHTING STRUCTURES

APPROVED  
 April 10/12/21



NOT  
APPROVED

**Area Lighting**  
**Round Steel Tapered**  
**Design 203**



**ARM LOCATION**

Design	Catalog No.	Mtg. Hgt. (Ft.)	Pole Size (In. x In. x Ft. & In.)	Pole Gauge	Arm Qty.	Arm Spread (Ft.)	Max. EPA (Sq. Ft.)	Max. Wgt. (Lbs.)	Shipping Wgt. (Lbs.)
203	11-065-170-1-4-(* )	20	6.5 x 4.12 x 17'-0	11	1 (4 max)	4	1.65 (Each)	60 (Each)	208
	11-070-220-1-4-(* )	25	7.0 x 3.92 x 22'-0						251
	11-075-270-1-4-(* )	30	7.5 x 3.72 x 27'-0						294
	11-080-320-1-4-(* )	35	8.0 x 3.52 x 32'-0						341
	11-090-370-1-4-(* )	40	9.0 x 3.82 x 37'-0						422
203	11-065-170-1-6-(* )	20	6.5 x 4.12 x 17'-0	11	1 (4 max)	6	1.65 (Each)	60 (Each)	215
	11-070-220-1-6-(* )	25	7.0 x 3.92 x 22'-0						258
	11-075-270-1-6-(* )	30	7.5 x 3.72 x 27'-0						301
	11-080-320-1-6-(* )	35	8.0 x 3.52 x 32'-0						348
	11-090-370-1-6-(* )	40	9.0 x 3.82 x 37'-0						429
203	11-065-170-1-8-(* )	20	6.5 x 4.12 x 17'-0	11	1 (4 max)	8	1.65 (Each)	60 (Each)	222
	11-070-220-1-8-(* )	25	7.0 x 3.92 x 22'-0						265
	11-075-270-1-8-(* )	30	7.5 x 3.72 x 27'-0						308
	11-080-320-1-8-(* )	35	8.0 x 3.52 x 32'-0						355
	11-090-370-1-8-(* )	40	9.0 x 3.82 x 37'-0						436

1 Arm Design Shown—Indicate 2 - 3 or 4 if required  
(\* ) P For Prime Paint; G For H.D. Galvanized; F For Finish Painted

Arm Spread	Ship Wgt. Each (Lbs.)
4 ft.	26
6 ft.	33
8 ft.	40

**HOW TO ORDER**

1. Select MOUNTING HEIGHT desired for your installation.
2. Verify that EPA (Effective Projected Area) and weight of luminaire does not exceed the allowables shown in the chart.
3. Write your order specifying the design number and catalog number complete with arm quantity and arm spread, and the finish code "P" or "G" or "F". (See Option "F" in specifications for available colors.)
4. Anchor bolt covers are not included with designs. These should be ordered as a separate accessory when required.
5. Example: Qty. 25. Design 203 Cat. No. 11-075-270-2-6-P.
6. Contact your Union Metal sales representative for service on your order.

TOP SIZE: 4" FLAT TO FLAT

REV.	ALTERATION	DATE	BY

**POLE SPECIFICATIONS**

CATALOG NO.: E250-APH-G-S30  
 C/W HEX RING  
 SECTION: S/F KA180-H STYLE ARM  
 HEXAGONAL  
 COLOR: SALT & PEPPER  
 FINISH: POLISHED  
 POLE TOP: 4" FL/FL  
 POLE BUTT: 8 3/4" FL/FL  
 POLE LENGTH: 25' 0"  
 APPROX. WGT.: 915 LBS  
 RACEWAY: MIN 1 1/8"  
 TO POLE TOP  
 QUANTITY: 9

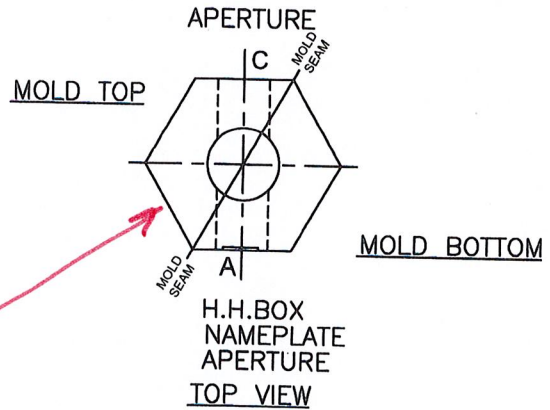
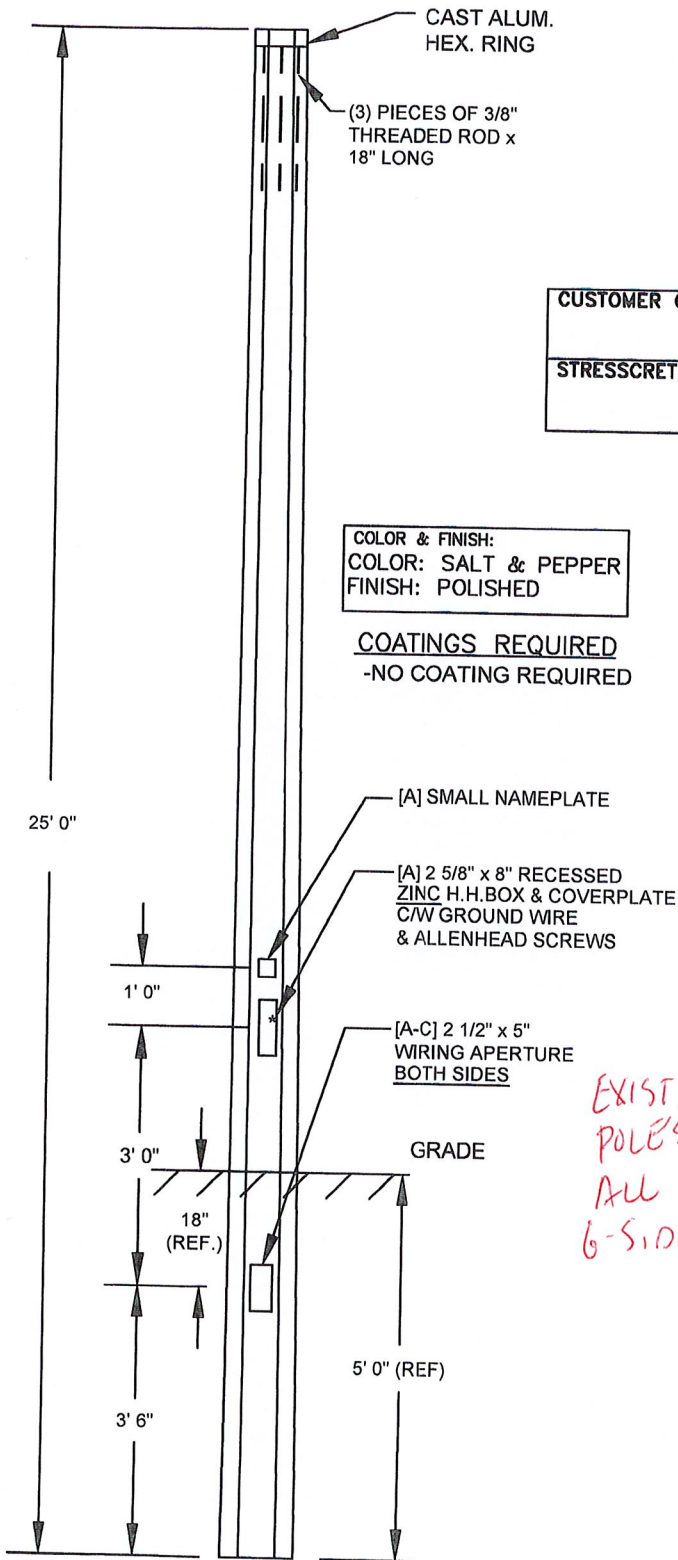
"CONTRACTOR TO INSTALL BURNDY KSU22 6-25 UNIVERSAL SERVIT SPLIT BOLT CONNECTORS (OR EQUIVALENT). CONNECTING THE #6 COPPER WIRE FROM THE POLE TO THE LUMINAIRE GROUND & A SEPARATE CONNECTOR BONDING POLE TO SUPPLY GROUNDING CONDUCTOR."

CUSTOMER ORDER No:  
 STRESSCRETE ORDER No:

COLOR & FINISH:  
 COLOR: SALT & PEPPER  
 FINISH: POLISHED

COATINGS REQUIRED  
 -NO COATING REQUIRED



**APPROVED**  
*ASME* 03/20/2024



EXISTING POLES  
 ALL 6-SIDED

CUSTOMER APPROVAL & DATE:

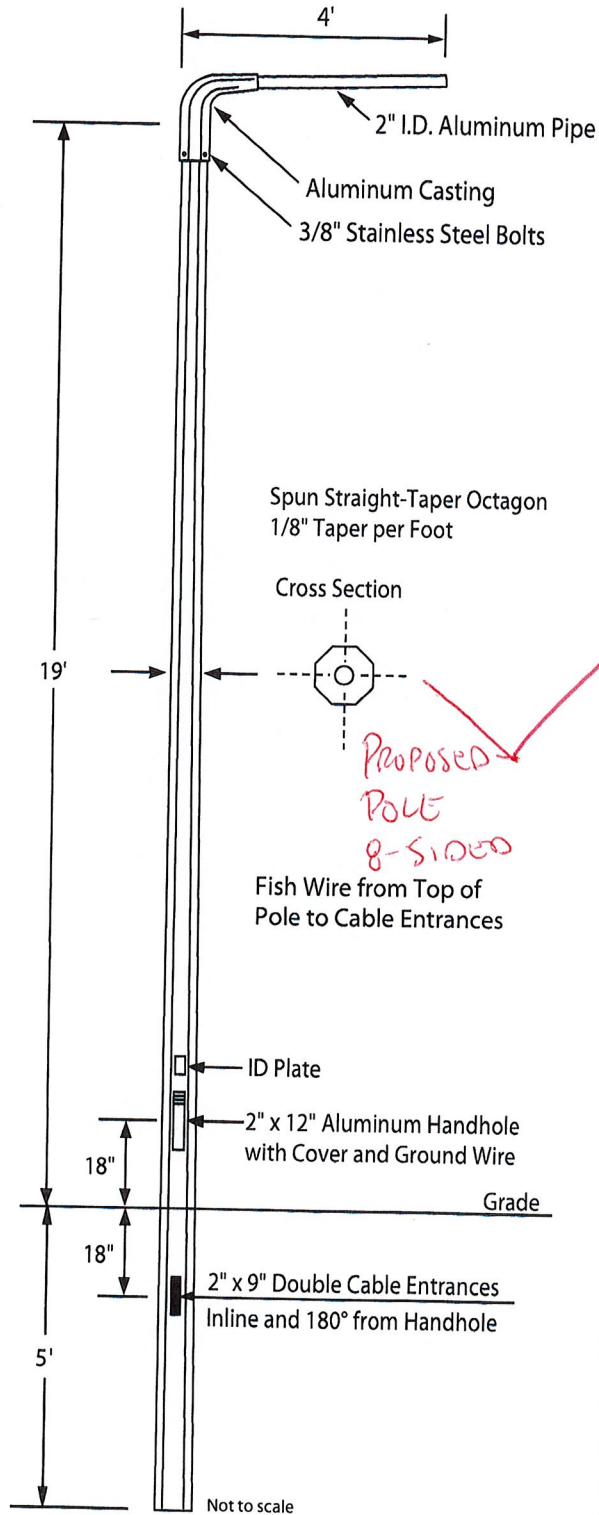
\*NOTE:  
 STRESSCRETE MAKES NO CLAIMS THAT THE REFERENCE EMBEDMENT DEPTH SHOWN IS SUITABLE FOR SUPPORTING THIS STRUCTURE. IT IS RECOMMENDED THAT A STRUCTURAL ENGINEER EVALUATE THE SOILS PRESENT ON SITE TO CONFIRM REQUIRED EMBEDMENT DEPTH AND BACKFILL MATERIAL TO BE USED.

 		<b>Manufacturing Locations:</b> Burlington, Ontario 1-800-268-7809 Northport, Alabama 1-800-435-6563 Atchison, Kansas 1-800-837-1024 Jefferson, Ohio 1-800-268-7809	
King Luminaire • StressCrete • Est. 1953 <b>STRESSCRETE GROUP</b>			
PROJECT/CUSTOMER: CITY OF AURORA, IL			
DRAWN BY: MJ	AT: SC3	CHECKED BY:	DATE: 2-6-24
DRAWING TYPE: APPROVAL DRAWING		DRAWING NUMBER: Q-2402008-1	

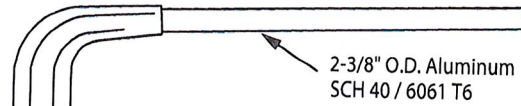
NOT APPROVED

# 100 Series

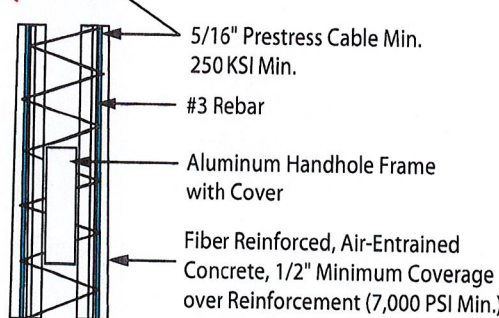
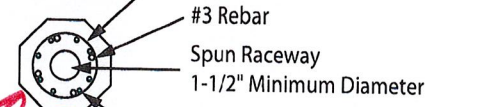
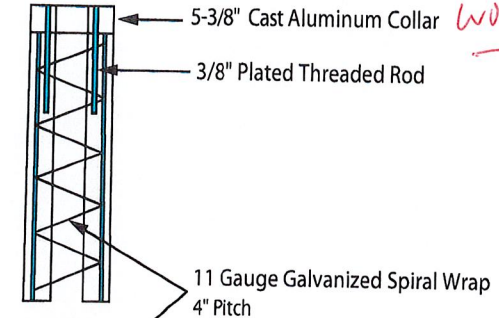
Prestressed, Spun Concrete Light Pole



## Davit Arm Detail



8-SIDED ATTACHMENT WILL NOT WORK



Job: **Aurora**

Pole #: **D119-PG-PA-4D**

Direct Burial 100 Series Concrete Pole  
 19' Above Ground, 5' Burial  
 Pearl Gray Color  
 Polished Finish with Acrylic Sealer  
 4' Aluminum Davit Arm



PO Box 157  
 W142 N9110 Fountain Blvd.  
 Menomonee Falls, WI 53052-0157  
 (888) 719-7599 toll-free  
 (262) 250-7599  
 info@concretepoles.com  
 www.concretepoles.com

Approved By: \_\_\_\_\_

Date: \_\_\_\_\_




NOT APPROVED

Project Name:

Type:

## SAVANNAH-2 ORDERING GUIDE

Cat#	Shade / Lens	Light Dist.	No. of LEDs	Milliamps	Kelvin
 <p>Proposed BASE - DIFFERENT AESTHETICS</p>	Shade 1 (SH1)	Type 3 (T3)	16 (16L)	350 (35)	Amber 585-600nm (AMBER)®
	Shade 2 (SH2)	Type 5 (T5)	32 (32L)	400 (40)	2700K, 70 CRI (27K7)
	Shade 3 (SH3)		48 (48L)	530 (53)	2700K, 80 CRI (27K8)
	Lens Globe 1 (LG1)®			700 (7)	3000K, 70 CRI (30K7)
	Lens Globe 2 (LG2)®				3000K, 80 CRI (30K8)
					3500K, 80 CRI (35K8)
					4000K, 70 CRI (40K7)
				4000K, 80 CRI (40K8)	
				5000K, 70 CRI (50K7)	
				5000K, 80 CRI (50K8)	
Volts	Mounting	Color	Controls	Options	
120-277 (UNV)	Post Top Mount Over 3' OD	Bronze Textured (BRZ)	Button Photocell (PC)®	Opal Lens (OPL)	
347-480 (HV)	Tenon (PT)	White Textured (WHT)	Nema 7-Pin Receptacle (PE7)	Polycarbonate Lens (PLY)	
		Smooth White Gloss (SWT)	Photocell + Receptacle (PCR)	Decorative Filigree + Strut Combo (FSC)	
		Silver (SVR)	Receptacle + Shorting Cap (PER)	House Side Shield (HSS)	
		Black Textured (BLK)	Custom Controls Integration (CCI)®	Finial (FIN)	
		Smooth Black Gloss (SBK)		Terminal Block (TB)	
		Graphite Textured (GPH)		Marine Grade Finish (MGF)	
		Grey Textured (GRY)		Buy American (BAA)®	
		Green (GRN)		Trade American (TAA)®	
		Custom (CS)		Build America Buy American (BABA)®	

**Notes:**

- ① Use With or Without Shade
- ② Use Without Shade
- ③ Consult Factory for Lead Time. Consult Factory for 90 CRI Requests.
- ④ Universal Voltage 120-277
- ⑤ Please contact Factory for Custom Control Integration requests (nLight, NX, WaveLinx, Crestron, DMX/RDM, Synapse, Casambi, Dall II, or other control systems)
- ⑥ Turtle Safe
- ⑦ Consult factory for all BAA/TAA/BABA requests



701 Kingshill Place, Carson, CA 90746  
Call Us Today (310) 341-2037

nslighting.com

BIO SHEET FROM  
 GRAY BAR W/ APPROVED  
 ALTERNATES  
 LISTED

CITY OF AURORA  
 REVISED QUOTATION PROPOSAL FORM 24-016  
 LIGHTING MATERIALS 2024


Please provide pricing for the following lighting materials (including shipping cost). Note that the final quantity of materials anticipated to be purchased under this contract may vary depending on unit pricing provided.

Material	Manufacturer	Model/Catalog Number	Qty	Unit Cost	Subtotal
Pole	Valmont*	120040404UB (12') Brookhaven*	10		
Pole (2 Arm)	Valmont	DS210-900A400 -(2)-8'LMA-FP/BK-HH-NC-AB w/Alhambra Finial	10		
Pole	StressCrete	E-250-APH-G (20') 535	15		
Bollard	Sentry Electric**	SAL-B-BOL-SLOT-INC (Gloss Black)**	10		
Fixture	King***	K833-75(SSL)8060 120/277V (Black)***	40		
Fixture	LV	LPBA-40 LED 4K-V-BK	15		
Fixture	Sentry****	SCP-NB-LEDV29BP-07A 803 DR KHT 3 TLR7 BK****	20		

Pricing may also be submitted for any or all of the following approved alternative products (see asterisks for corresponding item to be replaced above):

Pole	Spring City*	The Madison Flare Top*	10	\$3,373.06	\$33,730.60
Bollard	Spring City**	The Madison Lighted LED Bollard**	10	\$2,987.56	\$29,875.60
Fixture	Lumec***	RN30-80W48LED4K-G3-ACDR-LE3R-VOLT-DMG-SMA-BKTX***	40	\$1,956.48	\$78,259.20
Fixture	Spring City****	The Park Central LED Luminaire****	20	\$1,800.00	\$36,000.00

Total	\$177,865.40
-------	--------------

Bidders Name Adam Morrison  
 Signature & Date  2-20-24



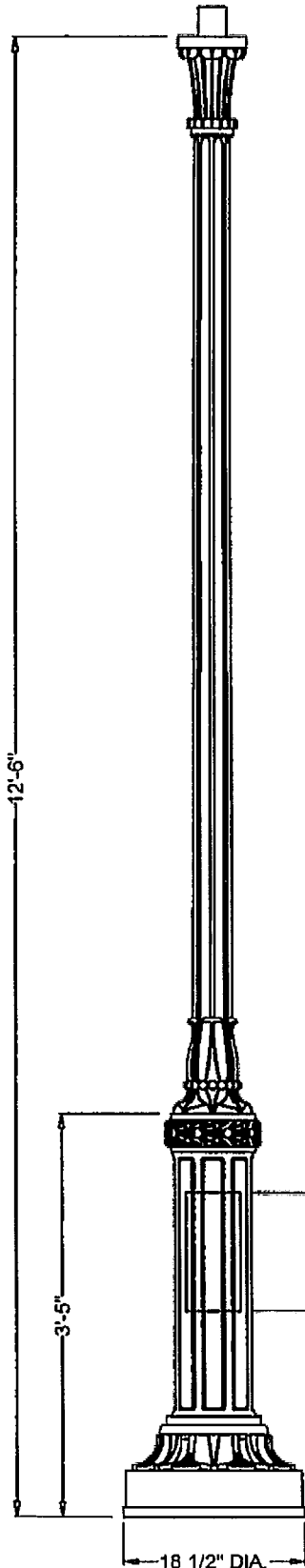
This drawing is property of Spring City Elec. Mfg. and is loaned to the recipient with the understanding that it shall not be copied, duplicated, passed on to unauthorized parties, nor used for any purpose other than that for which it is specifically furnished except with Spring City's written permission.

**LAMP POST SPECIFICATIONS**

STYLE: MADISON FLARE TOP  
 HEIGHT: 12'-6"  
 BASE: 18 1/2" DIAMETER  
 MATERIAL: PLEASE ADVISE BELOW  
 FINISH: PLEASE ADVISE BELOW  
 ACCESS DOOR: LOCATED IN BASE SECURED WITH TAMPER PROOF HEX SOCKET SECURITY MACHINE SCREWS  
 GROUND PROVISIONS: DRILL AND TAP INSIDE WALL OF BASE OPPOSITE ACCESS DOOR TO ACCOMMODATE A 1/4"-20 GROUND STUD (STUD SUPPLIED BY OTHERS)  
 ANCHOR BOLTS: (4) 3/4" DIA. X 24" LONG + 3" HOOK (FULLY GALVANIZED WITH 1 GALVANIZED NUT AND 1 GALVANIZED WASHER PER BOLT)  
 BOLT PROJECTION: 3" REQUIRED  
 TENON: PLEASE ADVISE BELOW

CATALOG NO.:

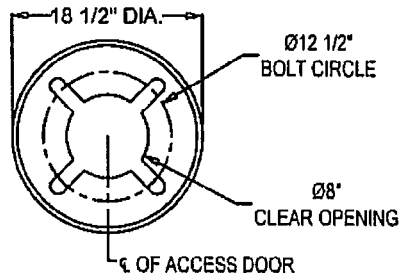
PSMDS-18-12.50-TN- / -C



MATERIAL	CAT. NO.
1 PIECE, CAST ALUMINUM ALLOY ANSI 356 PER A.S.T.M. B26-95	A
1 PIECE, CAST IRON PER A.S.T.M. A48-83 CLASS 30	I
1 PIECE, CAST DUCTILE IRON PER A536-84 GRADE 65-45-12	D

TENON	CAT. NO.
2 7/8" DIA. X 3" HIGH	TN2.88/3.00
3" DIA. X 3" HIGH	TN3.00/3.00
3 1/2" DIA. X 3" HIGH	TN3.50/3.00
4" DIA. X 3" HIGH	TN4.00/3.00
X.XX" DIA. X X.XX" HIGH	TNX.XXX/X.XX

FINISH	CAT. NO.
POWDER COAT - PLEASE ADVISE RAL #	CU
PRIME PAINT THEN FINISH PAINT SHERWIN WILLIAMS - PLEASE ADVISE COLOR	CW



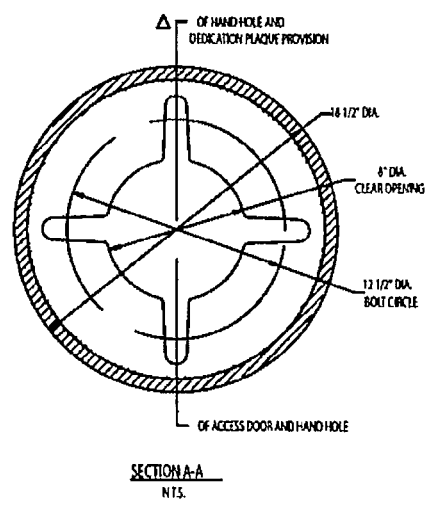
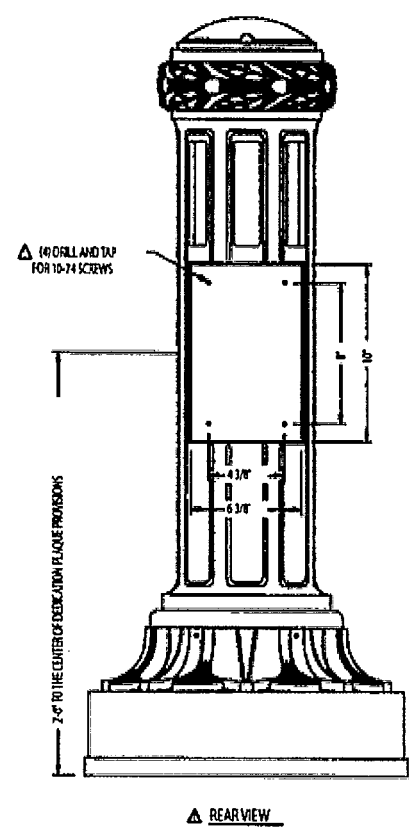
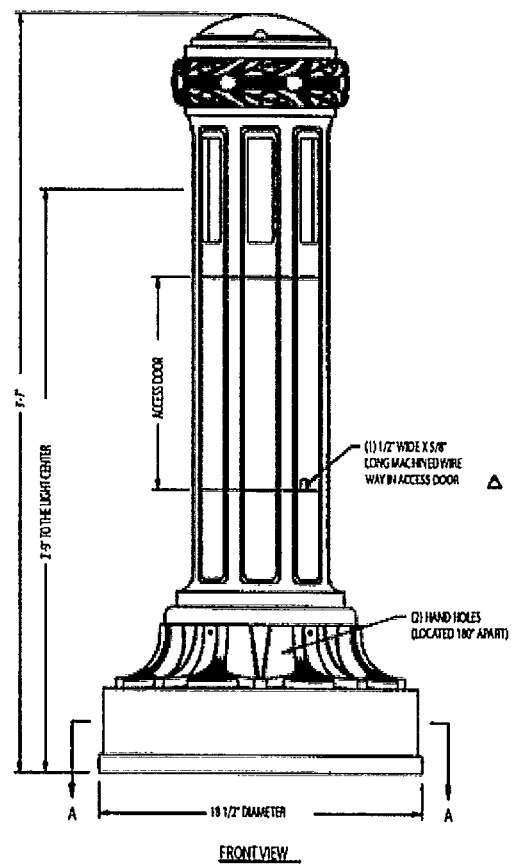
**BASE PLATE DETAIL**

**Spring City Electrical Mfg. Co.**  
 HALL AND MAIN STREETS - P.O. BOX 19 - SPRING CITY, PA. 19475  
 PHONE (610) 948-4000 - FAX (610) 948-5677 - WWW.SPRINGCITY.COM

<b>DESCRIPTION</b>	<b>THE MADISON FLARE TOP 12'-6" LAMP POST</b>
--------------------	---


APPROVED TENDING PLAN

This drawing is property of Spring City Elec. Mfg. and is loaned to the recipient with the understanding that it shall not be copied, duplicated, passed on to unauthorized parties nor used for any purpose other than that for which it is specifically furnished except with Spring City's written permission.



**BOLLARD SPECIFICATIONS**

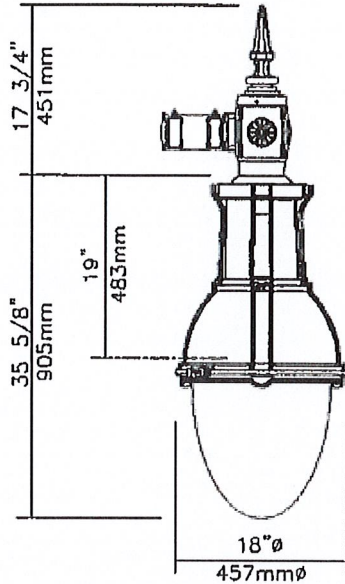
STYLE:	MADISON
HEIGHT:	3'-3"
LIGHT CENTER:	2'-9"
BASE:	18 1/2" DIAMETER
MATERIAL:	CAST DUCTILE IRON PER A.S.T.M. A536-64 GRADE 65-45-12
CYLINDER FINISH:	FROSTED ACRYLIC PRIME PAINT THEN FINISH PAINT, SHERWIN WILLIAMS ACRYLON - CLASSIC BLACK
LAMPING:	25 LED SYSTEM
VOLTAGE:	ELEC. TRONICALLY WIRED AT 120-277 VOLTS
COLOR TEMP:	4500K
DISTRIBUTION:	TYPE V (SYMMETRIC DISTRIBUTION)
ACCESS DOOR:	LOCATED IN BASE SECURED WITH TAM PER PROOF HEX SOCKET SECURITY MACHINE SCREWS
GROUND PROVISIONS:	DRILL AND TAP INSIDE WALL OF BASE OPPOSITE ACCESS DOOR TO ACCOMMODATE A 1/4"-20 GROUND STUD (GROUND STUD SUPPLIED BY OTHERS)
ANCHOR BOLTS:	(4) 3/4" DIA. X 2" LONG + 3" HOOK (FULLY GALVANIZED WITH 1 GALVANIZED NUT AND 1 GALVANIZED WASHER PER BOLT)
BOLT PROJECTION:	3" REQUIRED
CATALOG NO.:	△ DB04MS-18-3.58-1FLER025/REVX1-45-CHS-YCLF-FF-CB

△ REVISED BY: B.J.R.		DATE: 07-29-2014	
 <b>Spring City Electrical Mfg. Co.</b> HALL AND HART STREETS - P.O. BOX 11 - SPRING CITY, PA. 17415 PHONE 610-848-4000 - FAX 610-848-5577 - WWW.SPRINGCITY.COM			
DESCRIPTION		THE MADISON LIGHTED LED BOLLARD WITH DEDICATION PLAQUE PROVISIONS	
CUSTOMER			
JOB			
SCALE	DRAWN BY:	DATE	DRAWING NO.
N.T.S.	D.J.C.	05-20-14	

City of Aurora (Reference=L87339-1)



LEDGINE



EPA: 2.63 sq ft / weight: 55 lb (25 kg)  
 Note: 3D image may not represent color or option selected.  
 Logos above include link, click to access.

Qty	1	Luminaire	RN30-80W48LED4K-G3-ACDR-LE3R-VOLT-DMG-SMA-BKTX
-----	---	-----------	--

**Description of Components:**

**Roof:** Injection die cast A360.1 aluminium dome, mechanically assembled on the luminaire housing.

**Housing:** In a round shape, this housing is made of injection die cast A360.1 aluminium, complete with a weatherproof door giving a tool-free access to the ballast, without disconnection of wiring, mechanically assembled. This suspension system permits a full rotation of the luminaire in 90 degree increments.

**Access-Mechanism:** Injection die cast A360.1 aluminium frame with latch and hinge, complete with cast-in security block for frame's open position. The mechanism shall offer tool-free access to the inside of the luminaire. An embedded memory-retentive gasket shall ensure weatherproofing.

**Light Engine: LEDgine** composed of 5 main components: **Globe / LED Module / Optical System / Heat Sink / Driver**  
 Electrical components are RoHS compliant.

**Heat Sink:** Made of cast aluminum optimising the LEDs efficiency and life. Product does not use any cooling device with moving parts (only passive cooling device).

**Globe:** (ACDR), Made of one-piece seamless injection-molded impact-resistant (DR) acrylic having an inner prismatic surface. Complete with a semi-prismatic house side shield and external glare softening prisms. The globe is mechanically assembled and sealed onto the lower part of the heat sink.

**LED Module:** Composed of 48 high-performance white LEDs. Color temperature as per ANSI/NEMA bin Neutral White, 4000 Kelvin nominal (3985K +/- 275K or 3710K to 4260K), CRI 70 Min. 75 Typical.

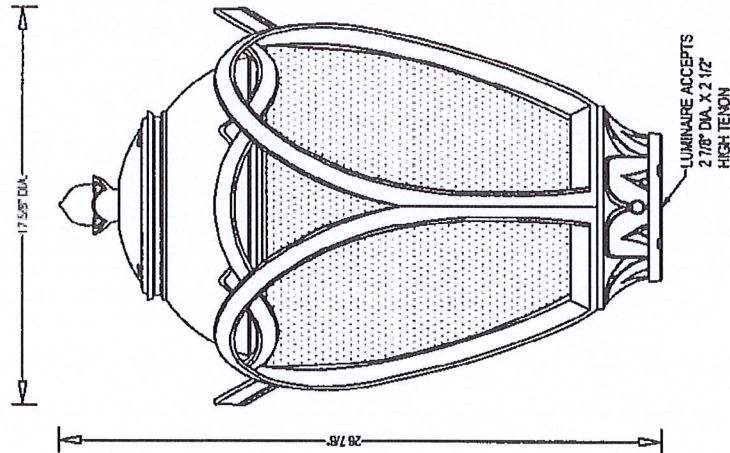
APPROVED SENTRY AVE.

The drawing is property of Spring City Electrical Mfg. Co. and is issued to be used in conjunction with the accompanying literature and shall not be copied, duplicated, reprinted, or used for any purpose other than that for which it is specifically furnished except with Spring City's written permission.

**LUMINAIRE SPECIFICATIONS**

STYLE: PARK CENTRAL LED LUMINAIRE  
 HEIGHT: 29 7/8"  
 WIDTH: 17 5/8" DIAMETER  
 MATERIAL: CAST ALUMINUM ALLOY 356 PER A.S.T.M. B26-95  
 GLOBE: KEYSLOTTED FROSTED ACRYLIC GLOBE  
 FINISH: POWDER COAT - PLEASE SPECIFY WITH RAL NUMBER  
 LAMPING: PLEASE SELECT WATTAGE BELOW  
 VOLTAGE: ELECTRICALLY WIRE AT 120-277 VOLTS  
 COLOR TEMP: PLEASE SELECT COLOR TEMPERATURE BELOW  
 OPTICAL SYSTEM: PLEASE SELECT DISTRIBUTION BELOW  
 SURGE: 10XV

CATALOG NO.: ALMPCL-LE-EVX-1-Y1SFF-FCR-CU



CAT. NO.	LED WATTAGE	OPTICAL SYSTEM
LE040	40 WATTS	CR3 TYPE III
LE060	60 WATTS	CR4 TYPE IV
LE080	80 WATTS	CR5 TYPE V
LE100	100 WATTS	FM3 TYPE III (FROSTED)
OTHER WATTAGES AVAILABLE UPON REQUEST		FM4 TYPE IV (FROSTED)

CAT. NO.	COLOR TEMP.
Z2	2200K
Z7	2700K
Z30	3000K
Z40	4000K
Z45	4500K
OTHER COLOR TEMPERATURES AVAILABLE UPON REQUEST	

LIGHT ENGINE DETERMINED BY MANUFACTURER

INTEGRATED LIGHTING CONTROL PROVISIONS ARE AVAILABLE UPON REQUEST



**Spring City Electrical Mfg. Co.**

HALL AND WASH STREETS - P.O. BOX 19 - SPRING CITY, PA. 18455  
 PHONE (610) 544-4008 - FAX (610) 544-5577 - WWW.SPRINGCITY.COM

DESCRIPTION

THE PARK CENTRAL LED LUMINAIRE