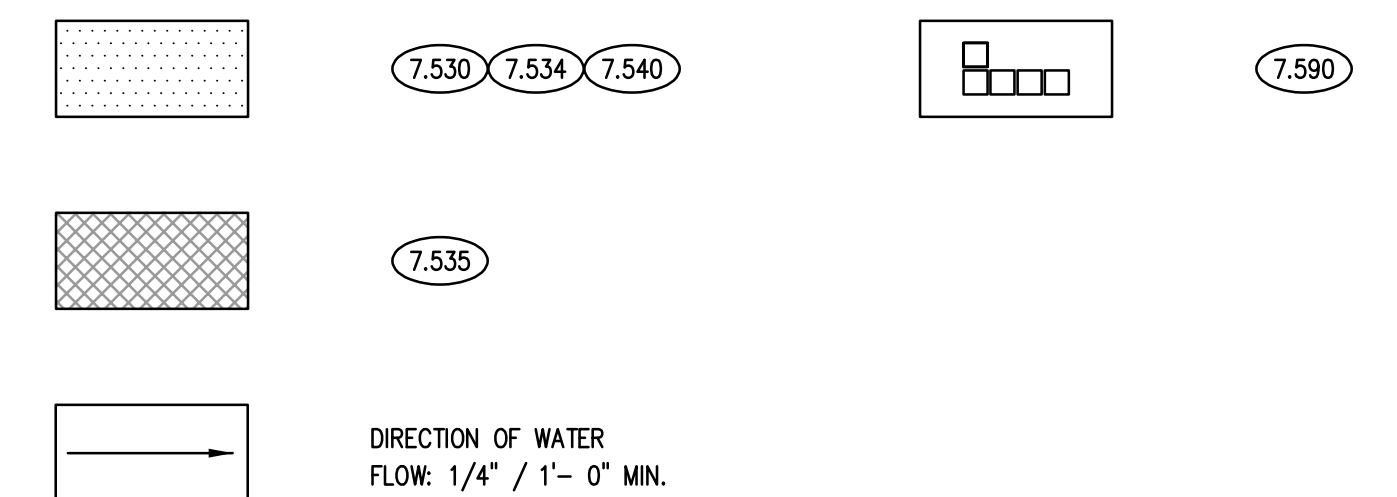


KEYNOTES

KEYNOTES ARE TYPICALLY NOT DUPLICATED WITHIN A GIVEN DETAIL. AN UN-KENNOTED ITEM IN A DETAIL IS THE SAME AS A KENNOTED ITEM HAVING THE SAME APPEARANCE WITHIN THE SAME DETAIL.

- 2.041 EXISTING STONE CAP TO REMAIN.
2.075 EXISTING ROOF CHIMNEY TO REMAIN.
2.076 EXISTING SCUPPER TO REMAIN; EXTEND ROOFING INTO OPENING AND FLASH ACCORDINGLY WITH FLUID-APPLIED WATERPROOFING.
2.077 EXISTING ROOF ACCESS LADDER.
2.249 EXISTING ROOF PORTAL.
2.250 EXISTING MECHANICAL ROOFTOP UNIT TO REMAIN.
2.255 EXISTING VENT THROUGH ROOF TO REMAIN.
2.256 EXISTING MECHANICAL EQUIPMENT TO REMAIN.
2.440 REMOVE EXISTING ROOFING: METAL COPING OR EDGE FLASHING.
2.442 REMOVE EXISTING ROOFING: MODIFIED BITUMEN DOWN TO CONCRETE DECK.
2.443 REMOVE EXISTING STEEL SUPPORT BEAMS: REMOVE MASONRY AS REQUIRED AND FLUID APPLIED MEMBRANE; PATCH EXISTING MASONRY WITH LIKE MATERIALS AFTER REMOVAL.
2.444 REMOVE EXISTING WOOD STAIRS.
2.448 REMOVE EXISTING ABANDONED ROOF VENT; INFILL WITH METAL DECKING TO MATCH EXISTING AND ROOFING.
2.450 REMOVE EXISTING ANTENNA IN ITS ENTIRETY.
2.490 SALVAGE EXISTING DISCONNECTED CONDENSATION PIPES; REINSTALL AS SHOWN ON NEW WORK PLAN.
2.500 SALVAGE EXISTING COMMUNICATIONS DEVICE, SUPPORTS AND CMU BALLAST.
- 7.140 FLUID-APPLIED WATERPROOFING: REFER TO SPECIFICATIONS; APPLY TO EXISTING BRICK MASONRY AND SCUPPER OPENING INTO NEW ROOFING; 8" ON EACH SIDE OF SCUPPER AND DOWN TO EXISTING ROOF COUNTERFLASHING IN AREA SHOWN.
- 7.530 ELASTOMERIC MEMBRANE ROOFING SYSTEM: FULLY ADHERED.
7.534 ELASTOMERIC MEMBRANE ROOFING MATERIAL: RIGID INSULATION; 2 LAYERS OF 2.6 INCH; 5.2 INCHES TOTAL THICKNESS; R-30 (MIN).
7.535 ELASTOMERIC MEMBRANE ROOFING MATERIAL: RIGID INSULATION; TAPERED; 1/2" PER FOOT SLOPE U.N.O.
7.540 ELASTOMERIC MEMBRANE ROOFING MATERIAL: RIGID INSULATION; BASE LAYER; THICKNESS AS REQUIRED TO ACHIEVE R-30 (MIN).
7.590 ROOFING ACCESSORY: WALKWAY PADS; REFER TO SPECIFICATIONS.
- 7.714 ROOF COPING ASSEMBLY: INSTALL NEW METAL COPING ACCORDING TO NRCA ROOFING MANUAL DETAIL EPDM-1 FOR PARAPET COPING OR EPDM-3 FOR EDGE FLASHING AS APPLICABLE; THICKNESS AND FINISH AS SPECIFIED; PROVIDE ADDITIONAL BLOCKING TO ACCOMMODATE NEW INSULATION HEIGHT.
7.724 ROOF ACCESSORY: PIPE SUPPORTS; REFER TO SPECIFICATIONS.
7.724 ROOFTOP WALKWAY: ACCESS STAIRS WITH HANDRAILS; REFER TO SPECIFICATIONS.
- 9.900 EXTERIOR PAINTING: PAINT GAS PIPING SAFETY YELLOW.
- 23.005 REINISTAL SALVAGED CONDENSATION PIPES.
- 26.003 REINISTAL SALVAGED COMMUNICATIONS DEVICE, SUPPORTS AND CMU BALLAST.

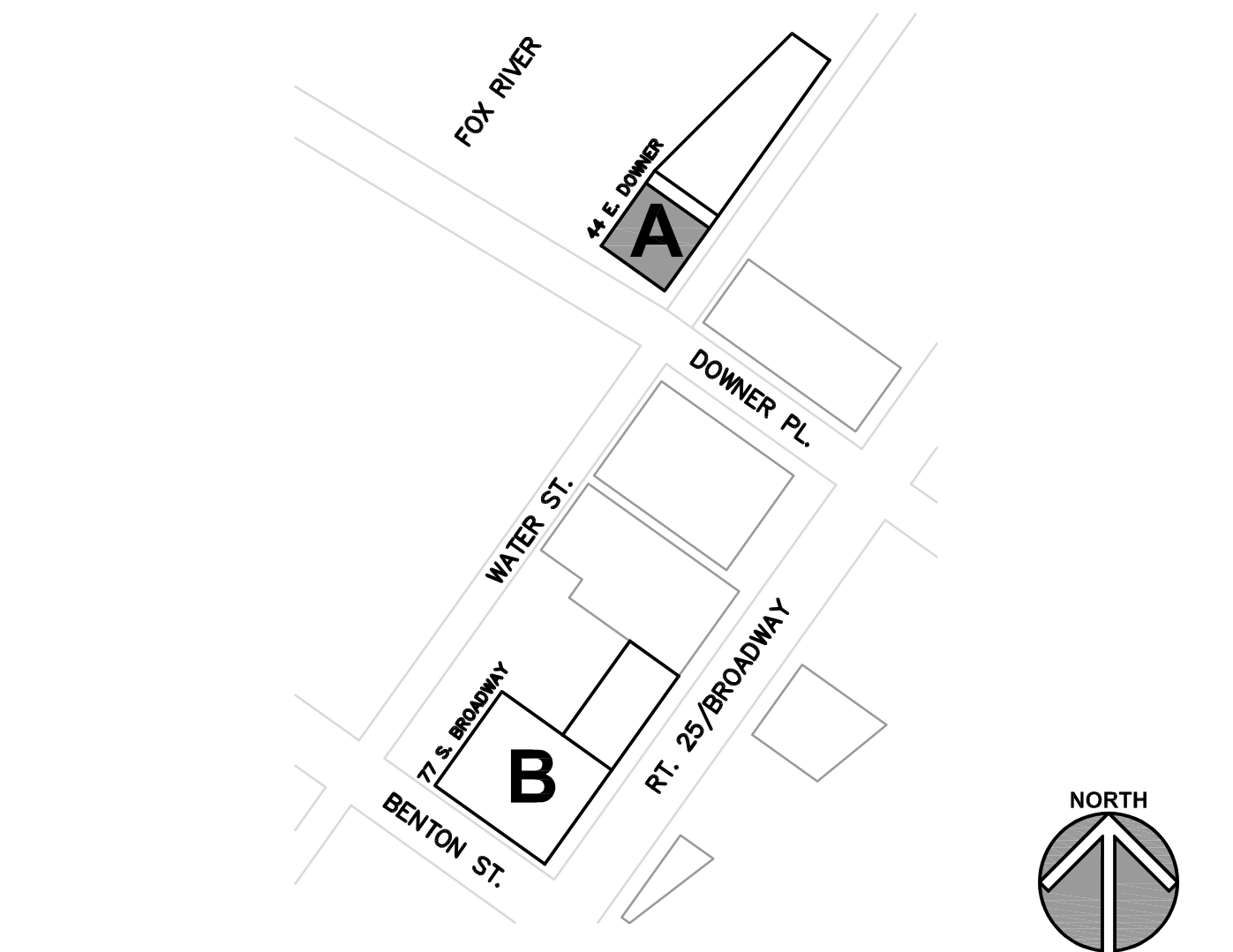
ROOF PLAN LEGEND



GENERAL NOTES

- REFER TO DRAWING G100 FOR PROJECT GENERAL NOTES.
- PROTECT SALVAGED ITEMS FROM DAMAGE UNTIL INCORPORATED INTO THE WORK.
- ADDITIONAL DEMOLITION RECONSTRUCTION AND REMOVAL/REPLACEMENT OF ARCHITECTURAL ELEMENTS IS REQUIRED TO COMPLETE THE WORK OF THIS PROJECT. PROVIDE DEMOLITION/RECONSTRUCTION AND REMOVAL/REPLACEMENT OF ARCHITECTURAL ELEMENTS AS REQUIRED TO COMPLETE THE WORK SHOWN ON THOSE DRAWINGS.
- ROOFING CONTRACTOR PROVIDE BOOTED ROOF PORTALS AND PIPE SUPPORT FOR ELECTRICAL CONDUIT, REFRIGERATION PIPING, GAS PIPING, CONDENSATE PIPING, AND HYDRONIC PIPING OUTSIDE ROOF CURBS TO MECHANICAL UNITS AND REMOTE CONDENSER UNITS.
- ENSURE THAT PIPING AND CONDUITS PENETRATING ROOF THROUGH PORTALS ARE ADEQUATELY AND PROPERLY SUPPORTED BENEATH ROOF WITH SUPPORTS CONNECTED SECURELY TO ROOF FRAMING MEMBERS. DO NOT ALLOW CAPS ON ROOF PORTALS TO PROVIDE SUPPORT FOR PENETRATING ITEMS.
- ROOFING CONTRACTOR PROVIDE STACK BOOTS ON MECHANICAL AND PLUMBING VENTS.
- PAINT GAS PIPING ABOVE ROOF TO ROOFTOP MECHANICAL UNITS; SAFETY YELLOW COLOR.
- PROVIDE TAPERED INSULATION SADDLES AT UPSTREAM SIDE OF CURB-MOUNTED UNITS.
- RAISE EXISTING PENETRATIONS SUCH AS VENT STACKS AS NEEDED TO MAINTAIN 8" MIN. FLASHING HEIGHT.
- REMOVE AND REPLACE DAMAGED OR RUINED EXISTING WOOD BLOCKING.
- AVERAGE ROOF R-VALUE OF R-30 TO BE MAINTAINED.

KEY PLAN



NOTE: SCALES DEPICTED ON THIS DRAWING ARE NOT CORRECT UNLESS PLOTTED SHEET SIZE IS 30 X 42 INCHES.

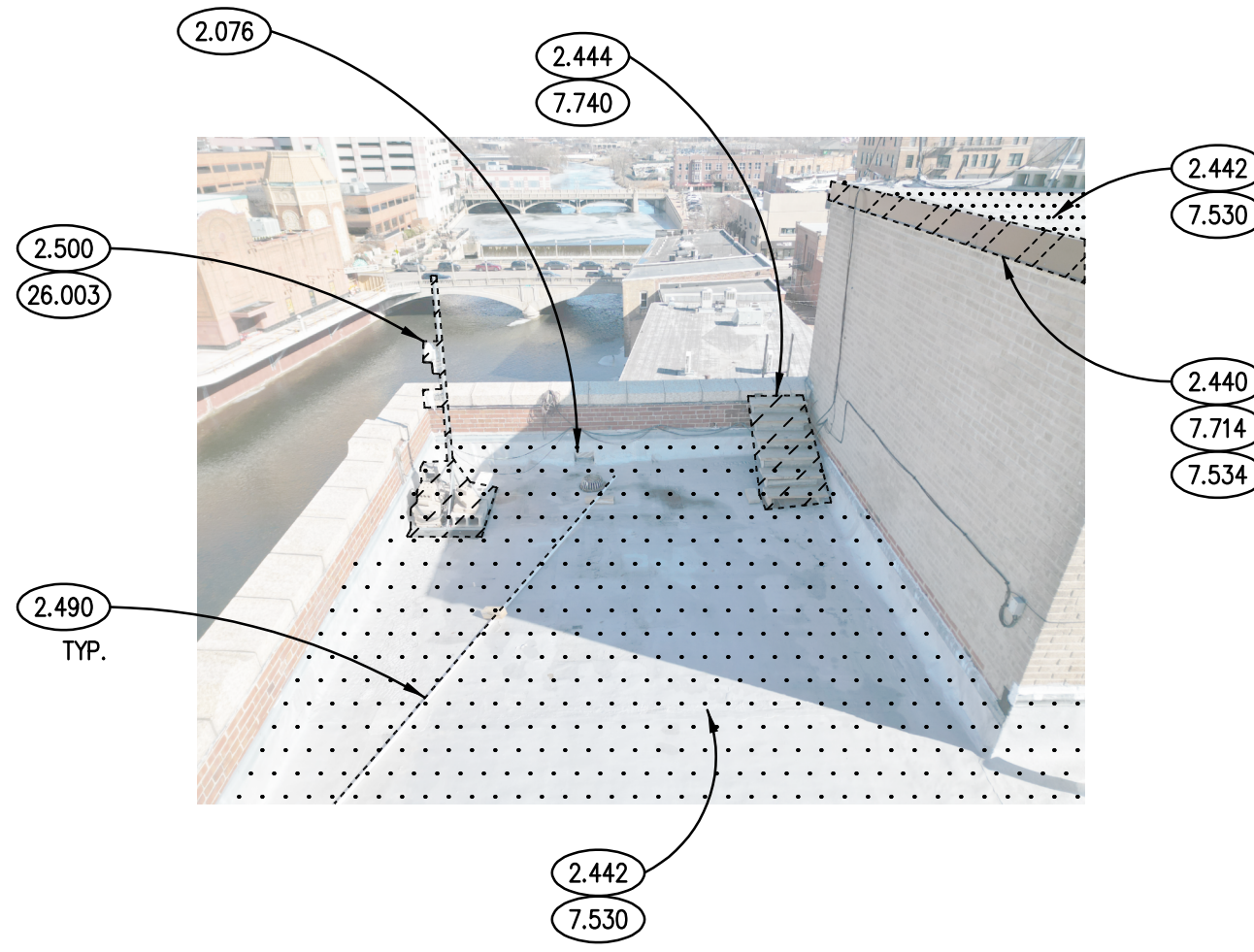


PHOTO DETAIL 7
N.T.S.

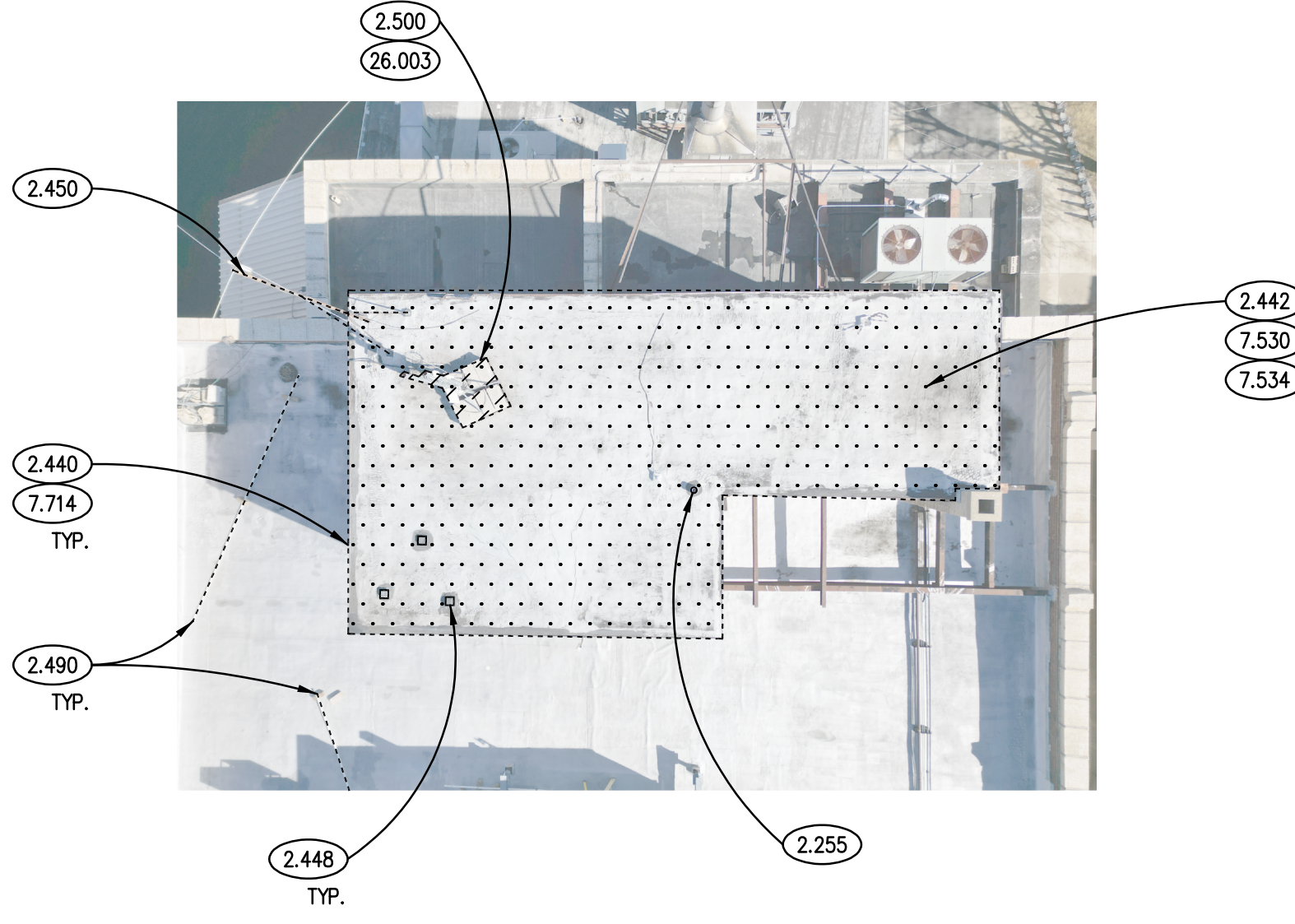


PHOTO DETAIL 3
N.T.S.

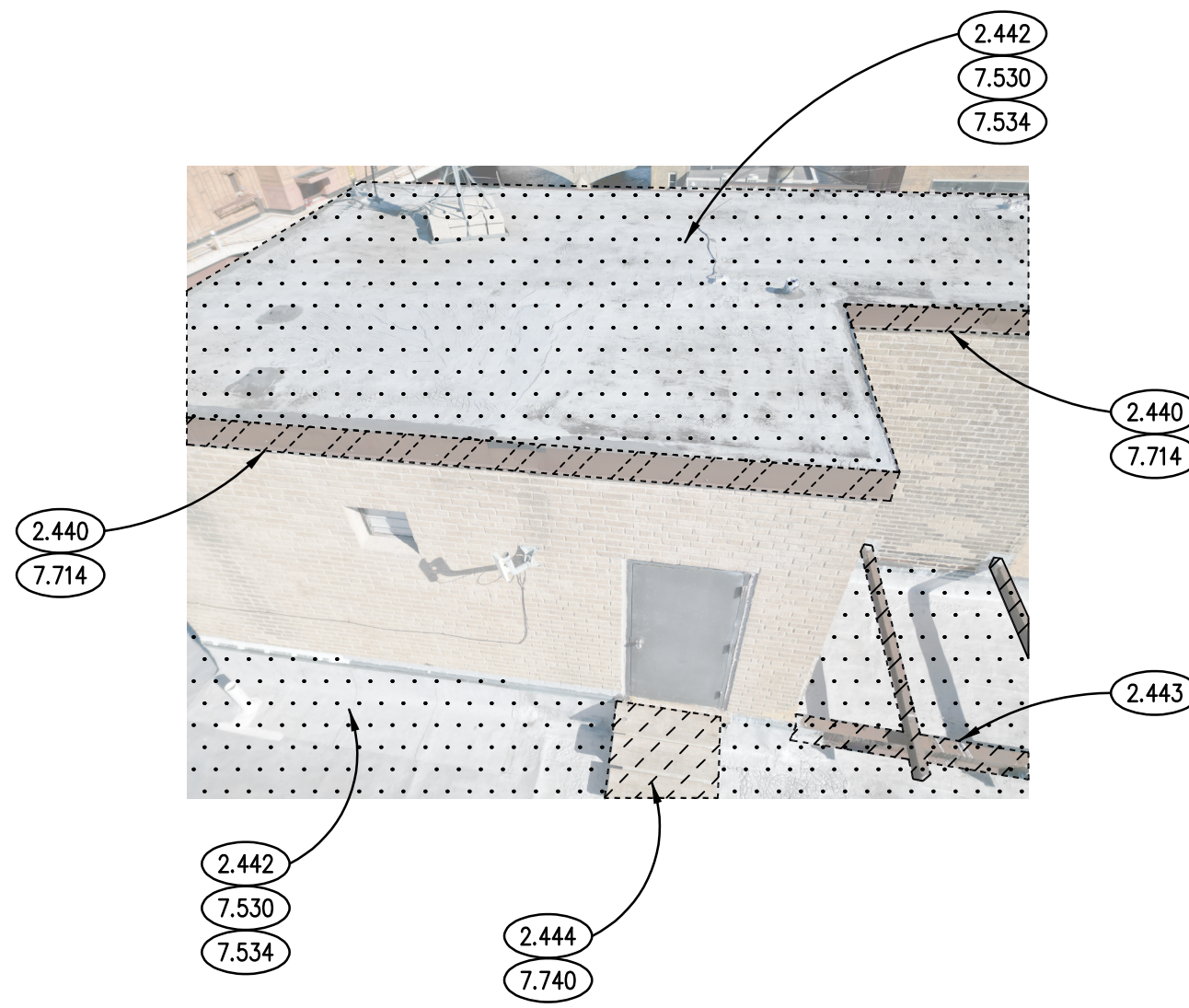
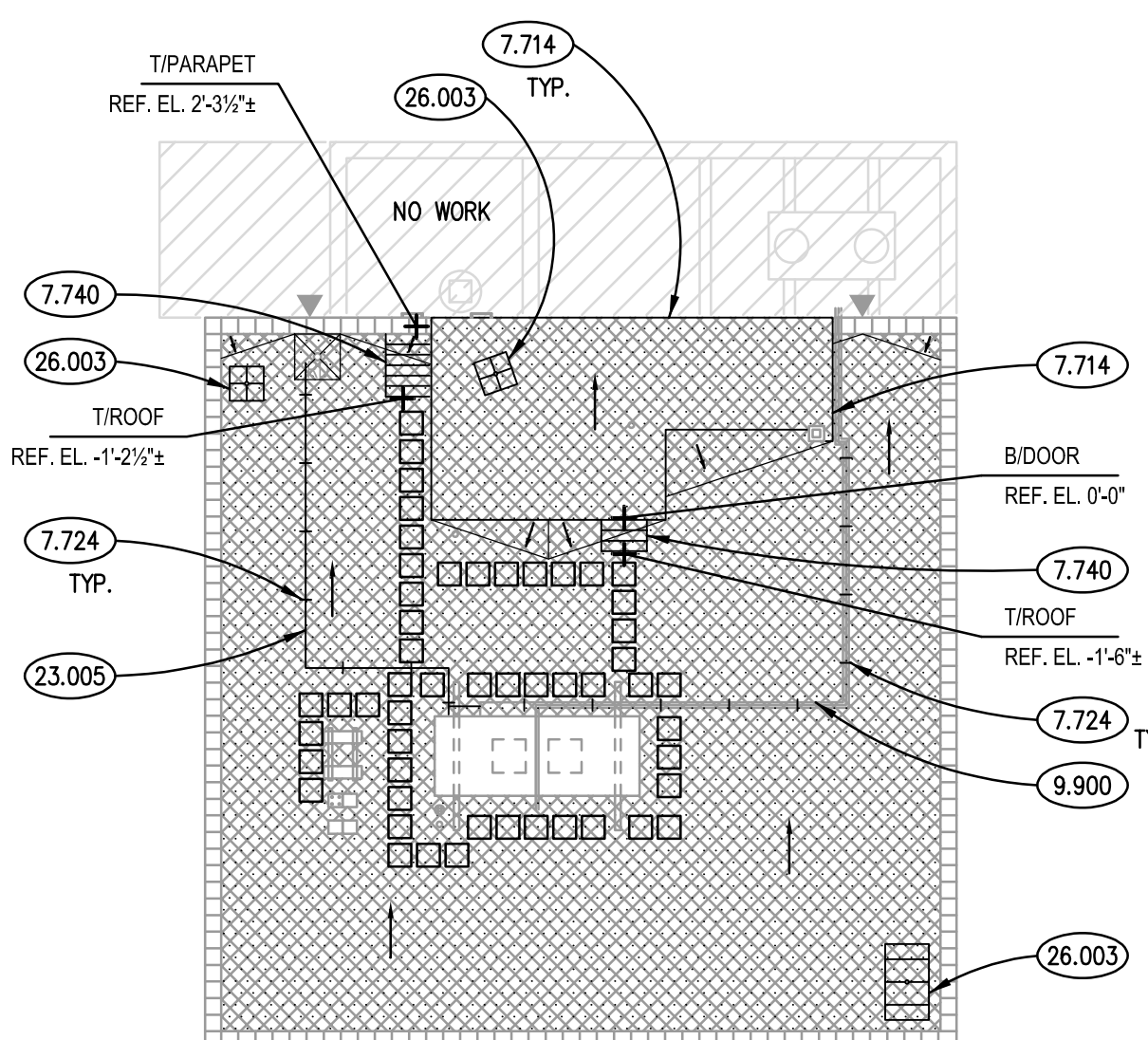
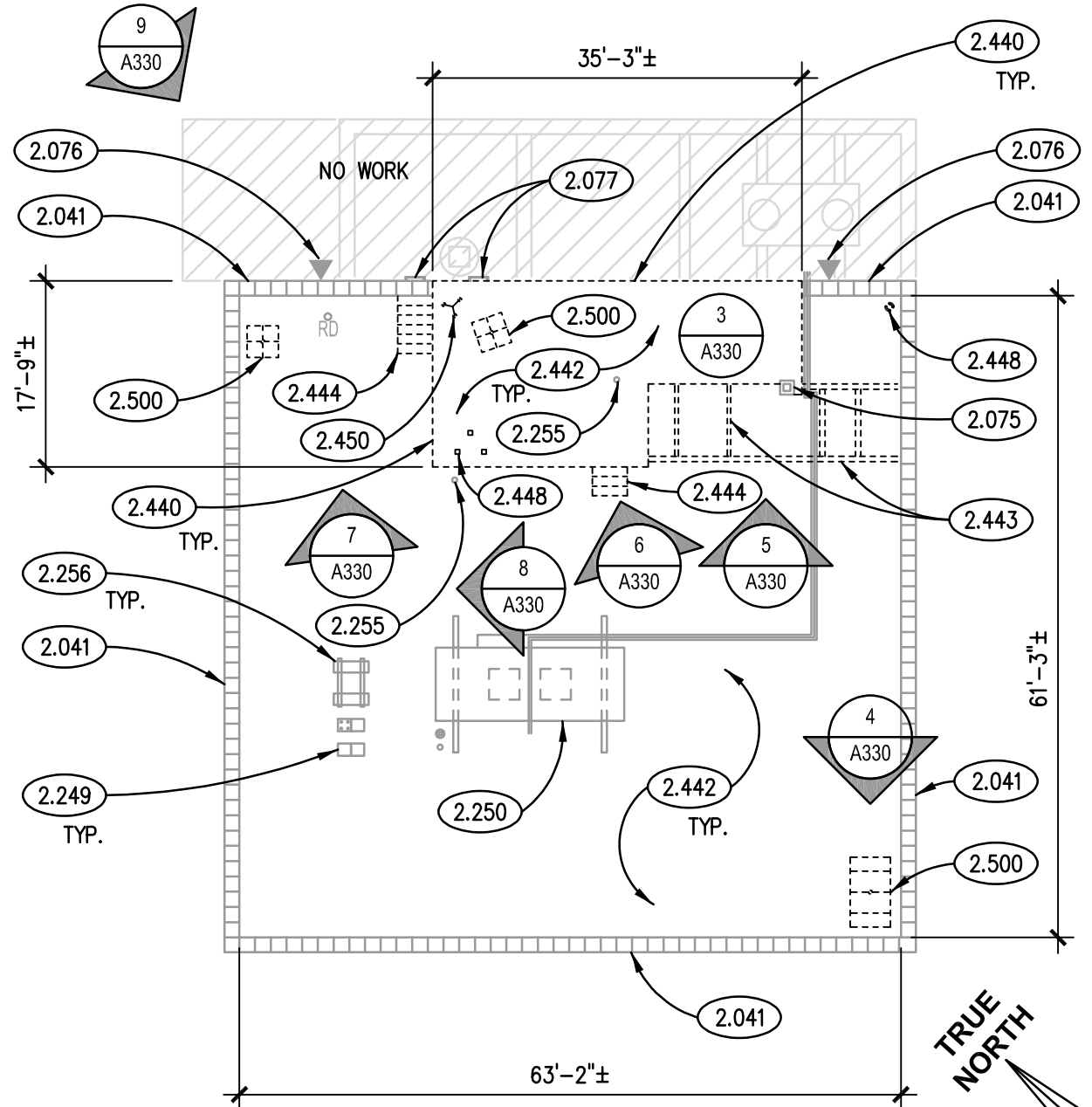


PHOTO DETAIL 6
N.T.S.



NEW WORK ROOF PLAN - AREA 'A'
SCALE: 1/16" = 1'-0" 2

EXISTING ROOF SYSTEM CONSISTS FROM BOTTOM TO TOP: CONCRETE DECK, MOPPED VAPOR BARRIER, 2" RIGID INSULATION, 1/2" HARDBOARD AND MODIFIED BITUMEN. NOTE: ASBESTOS CONTAINING MATERIAL IS PRESENT ON ROOF. REFER TO SPECIFICATIONS FOR REPORT AND PROPER REMEDIATION.



DEMOLITION ROOF PLAN - AREA 'A'
SCALE: 1/16" = 1'-0" 1



PHOTO DETAIL 9
N.T.S.

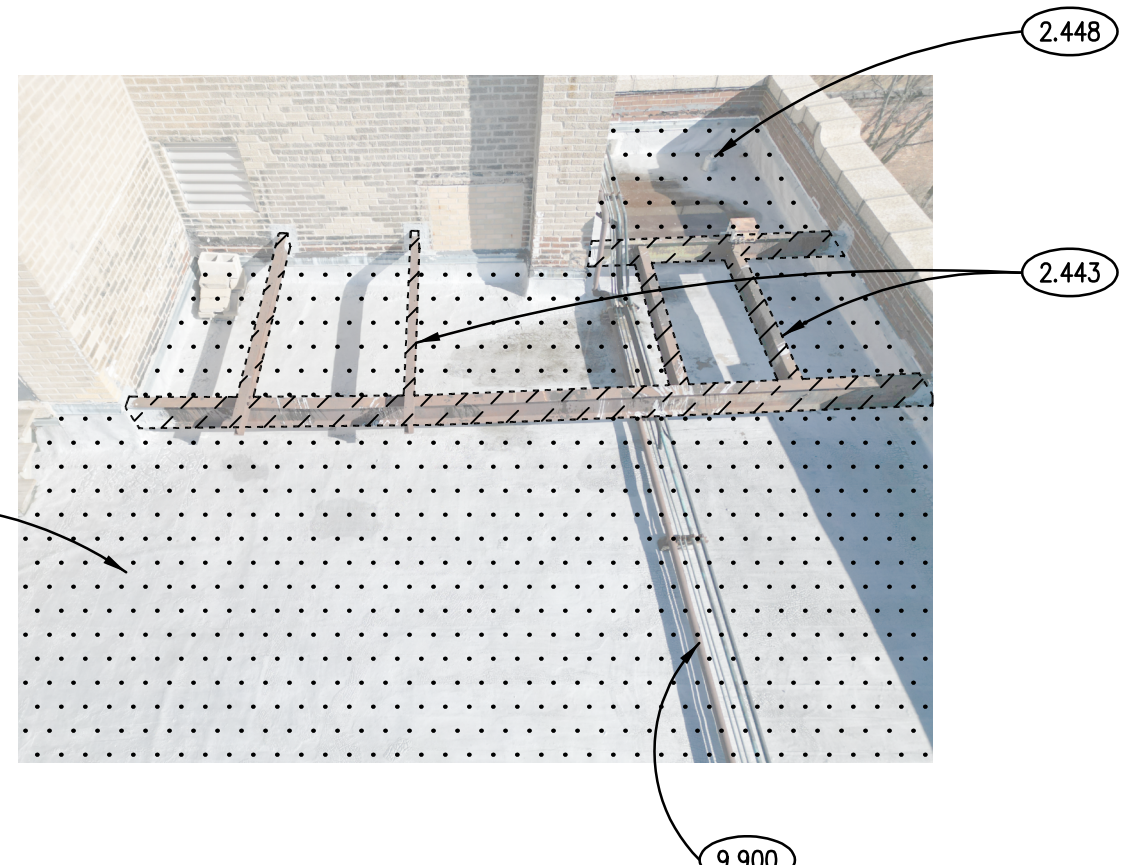


PHOTO DETAIL 5
N.T.S.

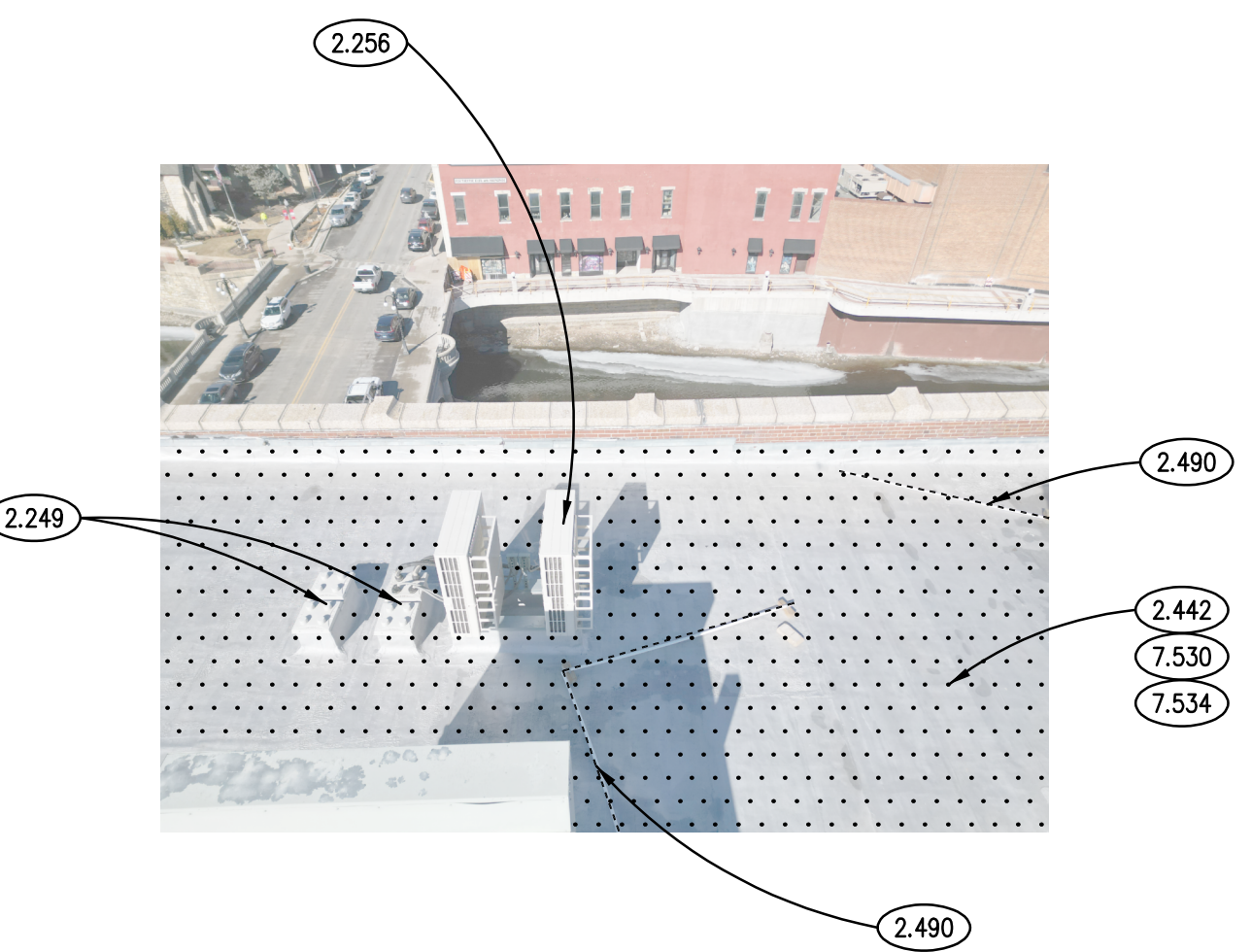


PHOTO DETAIL 8
N.T.S.

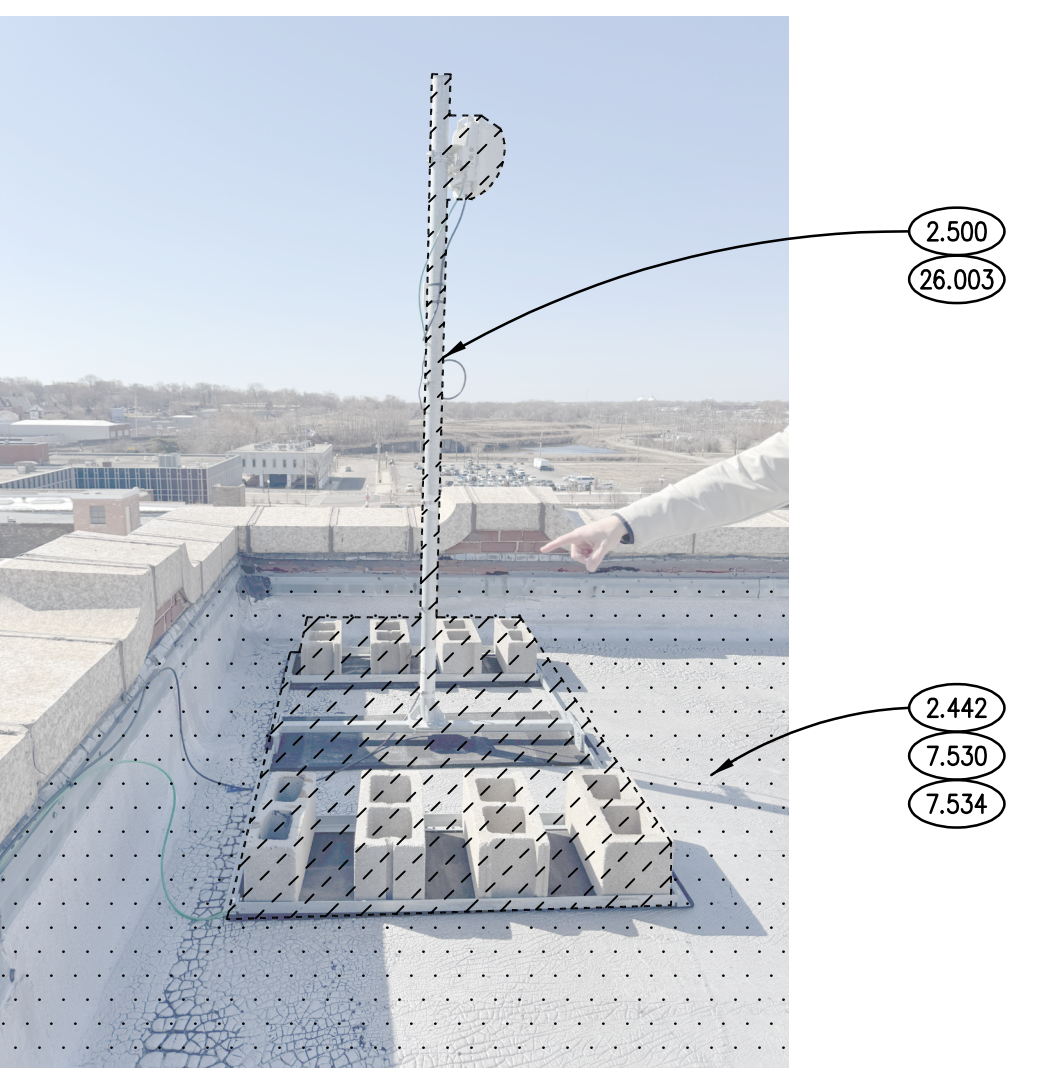


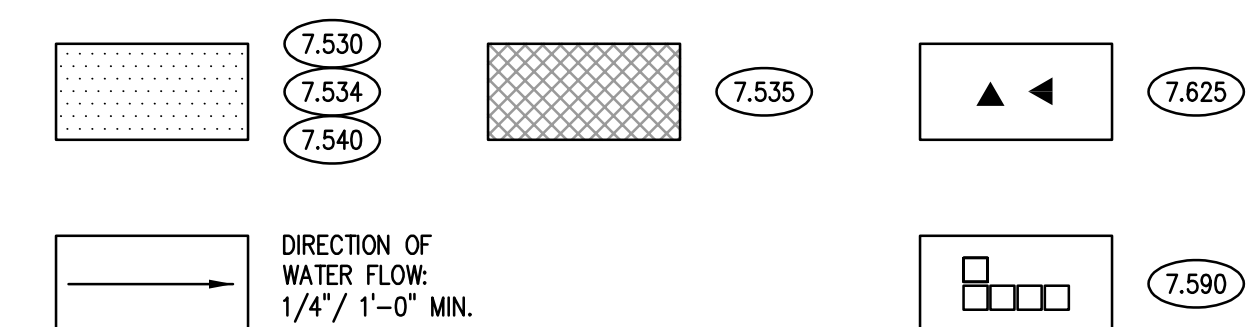
PHOTO DETAIL 4
N.T.S.

KEYNOTES

KEYNOTES ARE TYPICALLY NOT DUPLICATED WITHIN A GIVEN DETAIL. AN UN-KENNOTED ITEM IN A DETAIL IS THE SAME AS A KENNOTED ITEM HAVING THE SAME APPEARANCE WITHIN THE SAME DETAIL.

- 2.075 EXISTING ROOF CHIMNEY TO REMAIN.
 2.078 EXISTING SHEET-METAL PIPING CLOSURE TO REMAIN.
 2.250 EXISTING MECHANICAL ROOFTOP UNIT TO REMAIN.
 2.251 EXISTING MECHANICAL DUCT TO REMAIN.
 2.252 EXISTING EXHAUST FAN TO REMAIN.
 2.253 EXISTING GOOSENECK VENT TO REMAIN.
 2.254 EXISTING B-VENT TO REMAIN.
 2.255 EXISTING VENT THROUGH ROOF TO REMAIN.
 2.256 EXISTING MECHANICAL EQUIPMENT TO REMAIN.
 2.257 EXISTING ELECTRICAL BOX TO REMAIN.
 2.258 EXISTING ELECTRICAL CONDUIT TO SECURITY CAMERA TO REMAIN.
 2.440 REMOVE EXISTING ROOFING: METAL COPING OR EDGE FLASHING.
 2.441 REMOVE EXISTING ROOFING: BUILT-UP W/ GRAVEL DOWN TO CONCRETE DECK.
 2.445 REMOVE EXISTING WOOD MECHANICAL EQUIPMENT RAILS; TEMPORARILY SUPPORT UNIT WHILE NEW WORK IS BEING DONE.
 2.446 REMOVE EXISTING ROOF CURBS OR PIPE SUPPORTS.
 2.447 REMOVE EXISTING CAPPED ROOF OPENING; INFILL WITH METAL DECKING TO MATCH EXISTING AND ROOFING.
 2.448 REMOVE EXISTING ABANDONED ROOF VENT; INFILL WITH METAL DECKING TO MATCH EXISTING AND ROOFING.
 2.449 REMOVE EXISTING ABANDONED MECHANICAL UNIT, SUPPORTS AND WRING/PIPING CONNECTIONS.
 2.451 REMOVE EXISTING ROOFING COMPONENT: METAL DOWNSPOUT.
 2.452 REMOVE EXISTING ROOFING COMPONENT: UNISTRUT SUPPORTS.
 2.453 REMOVE EXISTING ROOFING COMPONENT: ROOF PORTAL.
 2.455 UNINSTALL AND SALVAGE IN PLACE EXISTING MECHANICAL EQUIPMENT ATTACHED TO EXISTING ABANDONED ROOFTOP UNIT.
 2.498 SALVAGE EXISTING EXTERIOR LIGHT FIXTURE.
 2.499 SALVAGE EXISTING SECURITY CAMERA, SUPPORTS AND CMU WEIGHTS.
 2.501 SALVAGE EXISTING SECURITY CAMERA.
 2.502 TEMPORARILY REMOVE EXISTING DISCONNECT BOX AND INSTALL NEW FREESTANDING SUPPORT SYSTEM FOR SWITCH.
 7.530 ELASTOMERIC MEMBRANE ROOFING SYSTEM; FULLY ADHERED.
 7.534 ELASTOMERIC MEMBRANE ROOFING MATERIAL: RIGID INSULATION; 2 LAYERS OF 2.6 INCH; 5.2 INCHES TOTAL THICKNESS; R=30 (MIN).
 7.535 ELASTOMERIC MEMBRANE ROOFING MATERIAL: RIGID INSULATION; TAPERED; 1/2" PER FOOT SLOPE U.N.O.
 7.540 ELASTOMERIC MEMBRANE ROOFING MATERIAL: RIGID INSULATION; BASE LAYER; THICKNESS AS REQUIRED TO ACHIEVE R=30 (MIN).
 7.590 ROOFING ACCESSORY: WALKWAY PADS; REFER TO SPECIFICATIONS.
 7.625 SCUPPER: 6" W X 4"; CONSTRUCT IN ACCORDANCE WITH SMACTA ARCHITECTURAL SHEET METAL MANUAL FIGURE 1-26.
 7.632 METAL DOWNSPOUT: 3" X 4"; MATERIAL, THICKNESS AND FINISH AS SPECIFIED.
 7.635 METAL DOWNSPOUT ACCESSORY: PRECAST CONCRETE SPLASH PAD.
 7.712 ROOF SPECIALTY: MULTIPLE PORT ROOF PORTAL WITH RUBBER BOOT AND CLAMPING RING.
 7.713 ROOF COUNTERFLASHING ASSEMBLY: INSTALL NEW FLASHING AND MEMBRANE ACCORDING TO NRCA ROOFING MANUAL DETAIL EPDM-5; THICKNESS AND FINISH AS SPECIFIED.
 7.714 ROOF COPING ASSEMBLY: INSTALL NEW METAL COPING ACCORDING TO NRCA ROOFING MANUAL DETAIL EPDM-1 FOR PARAPET COPING OR EPDM-3 FOR EDGE FLASHING AS APPLICABLE; THICKNESS AND FINISH AS SPECIFIED; PROVIDE ADDITIONAL BLOCKING TO ACCOMMODATE NEW INSULATION HEIGHT.
 7.715 ROOF COPING ASSEMBLY: INSTALL NEW METAL COPING ACCORDING TO NRCA ROOFING MANUAL DETAIL EPDM-9; THICKNESS AND FINISH AS SPECIFIED.
 7.716 ROOF COUNTERFLASHING ASSEMBLY: FLASH EXISTING MECHANICAL UNIT ACCORDING TO NRCA ROOFING MANUAL DETAIL EPDM-13 SM.
 7.717 ROOF COUNTERFLASHING ASSEMBLY: FLASH B-VENT THROUGH ROOF ACCORDING TO NRCA ROOFING MANUAL DETAIL EPDM-18; THICKNESS AND FINISH AS SPECIFIED.
 7.724 ROOF ACCESSORY: PIPE SUPPORTS; REFER TO SPECIFICATIONS.
 7.725 ROOF ACCESSORY: EQUIPMENT RAILS; FLASH ACCORDING TO NRCA ROOFING MANUAL DETAIL EPDM-22 SM.
 9.900 EXTERIOR PAINTING: PAINT GAS PIPING SAFETY YELLOW.
 9.901 EXTERIOR PAINTING: SCRAPE, PREP AND PAINT EXISTING ELECTRICAL BOX; COLOR TO BE DETERMINED BY OWNER.
 23.001 REINSTALL SALVAGED MECHANICAL EQUIPMENT.
 26.001 REINSTALL SALVAGED EXTERIOR LIGHT FIXTURE.
 26.002 REINSTALL SALVAGED SECURITY CAMERA, SUPPORTS AND CMU WEIGHTS.
 26.004 REINSTALL SALVAGED SECURITY CAMERA.

ROOF PLAN LEGEND



GENERAL NOTES

- REFER TO DRAWING G100 FOR PROJECT GENERAL NOTES.
- PROTECT SALVAGED ITEMS FROM DAMAGE UNTIL INCORPORATED INTO THE WORK.
- ADDITIONAL DEMOLITION/RECONSTRUCTION AND REMOVAL/REPLACEMENT OF ARCHITECTURAL ELEMENTS IS REQUIRED TO COMPLETE THE WORK OF THIS PROJECT. PROVIDE DEMOLITION/RECONSTRUCTION AND REMOVAL/REPLACEMENT OF ARCHITECTURAL ELEMENTS AS REQUIRED TO COMPLETE THE WORK SHOWN ON THOSE DRAWINGS.
- ROOFING CONTRACTOR PROVIDE BOOTED ROOF PORTALS AND PIPE SUPPORT FOR ELECTRICAL CONDUIT, REFRIGERATION PIPING, GAS PIPING, CONDENSATE PIPING, AND HYDRONIC PIPING OUTSIDE ROOF CURBS TO MECHANICAL UNITS AND REMOTE CONDENSER UNITS.
- ENSURE THAT PIPING AND CONDUITS PENETRATING ROOF THROUGH PORTALS ARE ADEQUATELY AND PROPERLY SUPPORTED BENEATH ROOF WITH SUPPORTS CONNECTED SECURELY TO ROOF FRAMING MEMBERS. DO NOT ALLOW CAPS ON ROOF PORTALS TO PROVIDE SUPPORT FOR PENETRATING ITEMS.
- ROOFING CONTRACTOR PROVIDE STACK BOOTS ON MECHANICAL AND PLUMBING VENTS.
- PAINT GAS PIPING ABOVE ROOF TO ROOFTOP MECHANICAL UNITS, SAFETY YELLOW COLOR.
- PROVIDE TAPERED INSULATION SADDLES AT UPSTREAM SIDE OF CURB-MOUNTED UNITS.
- RAISE EXISTING PENETRATIONS SUCH AS VENT STACKS AS NEEDED TO MAINTAIN 8" MIN. FLASHING HEIGHT.
- REMOVE AND REPLACE DAMAGED OR RUINED EXISTING WOOD BLOCKING.
- AVERAGE ROOF R-VALUE OF R-30 TO BE MAINTAINED.

KEY PLAN

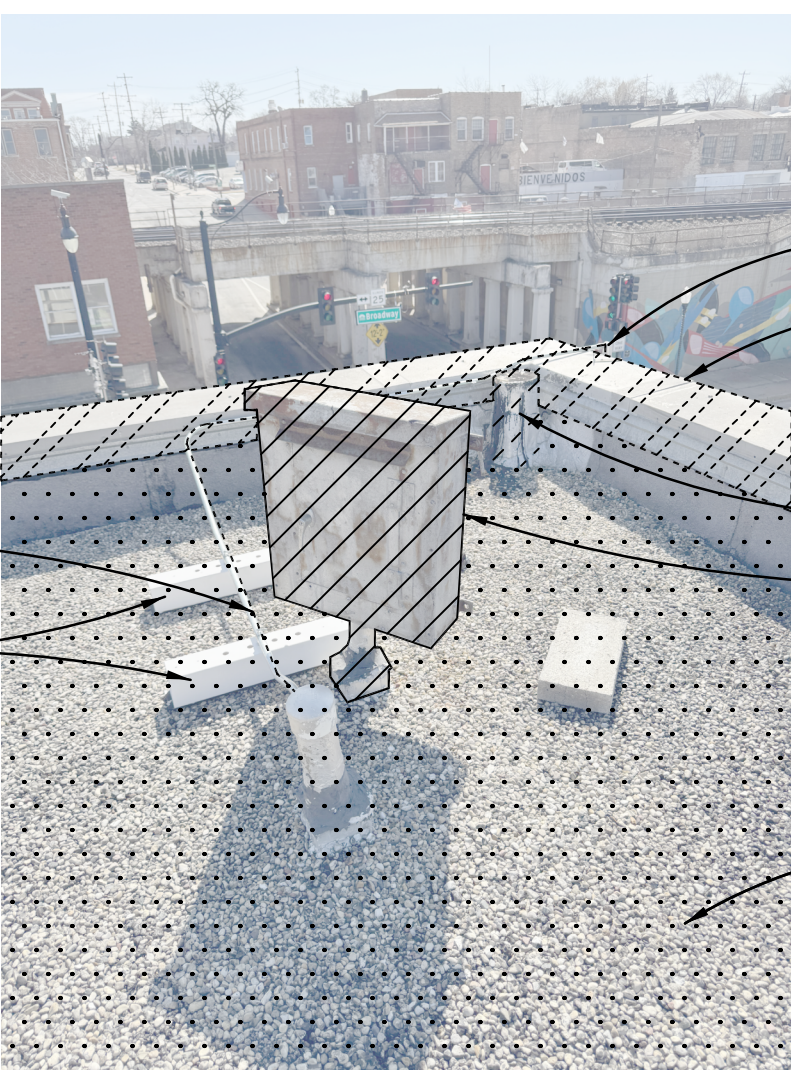
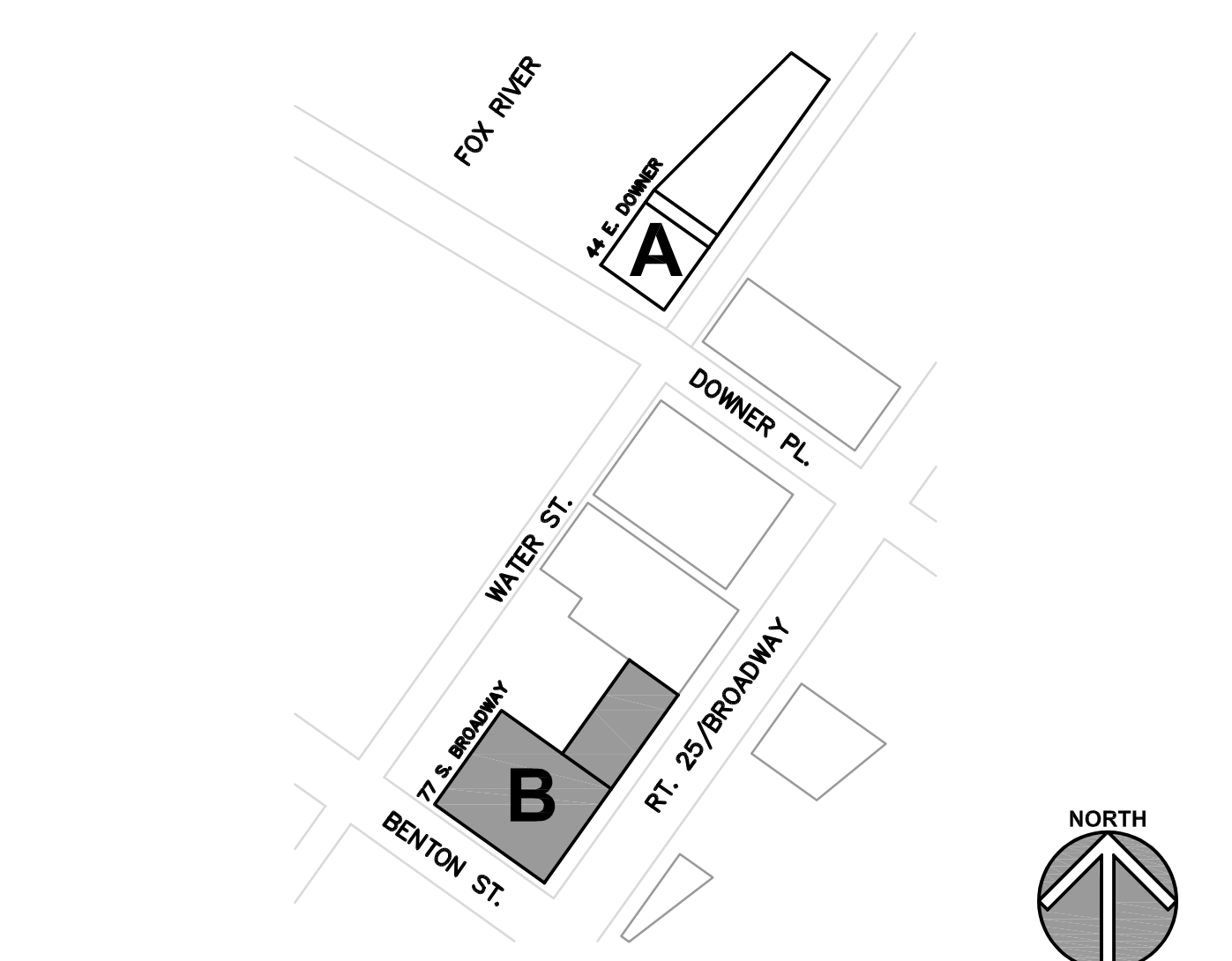


PHOTO DETAIL 6
 N.T.S.

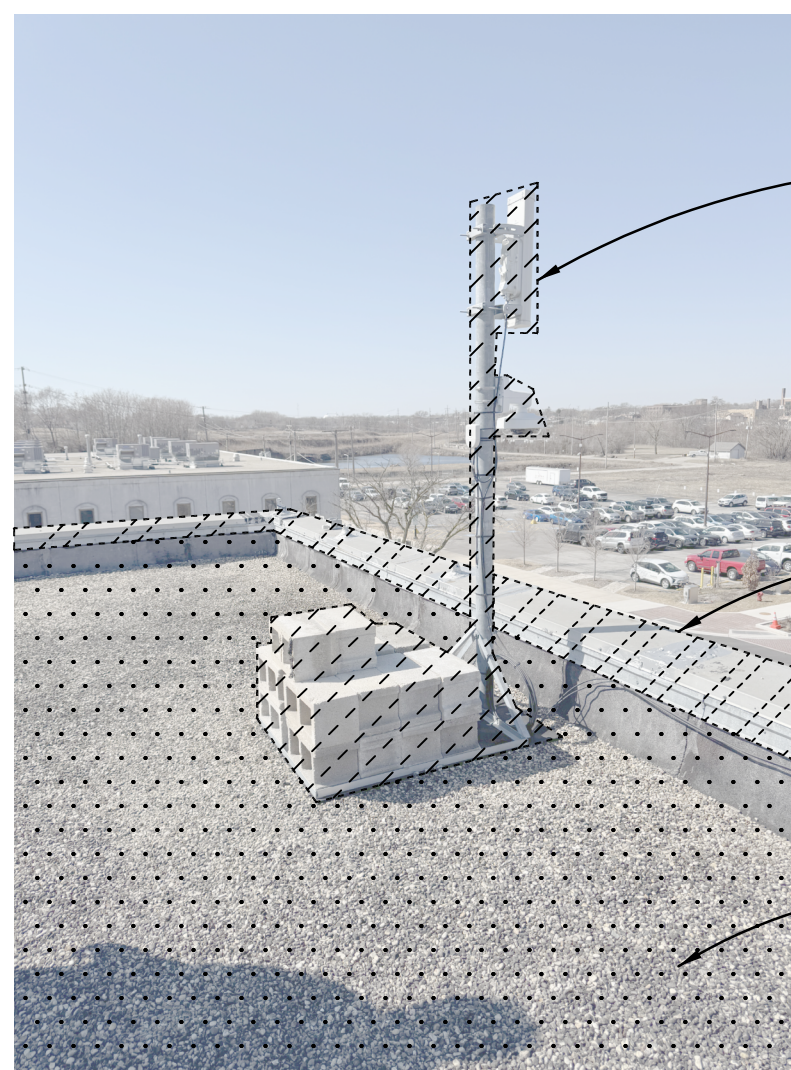


PHOTO DETAIL 5
 N.T.S.

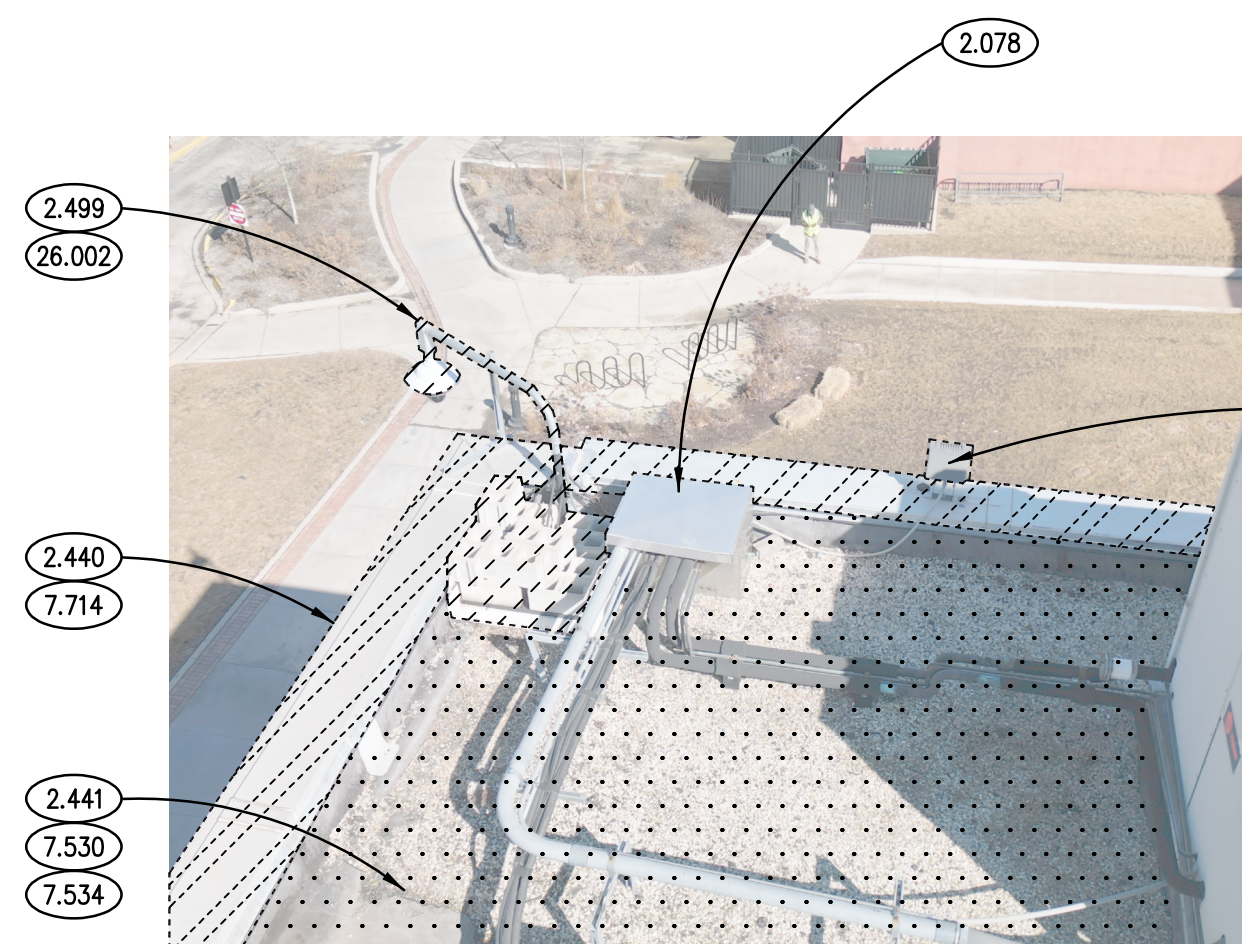


PHOTO DETAIL 4
 N.T.S.

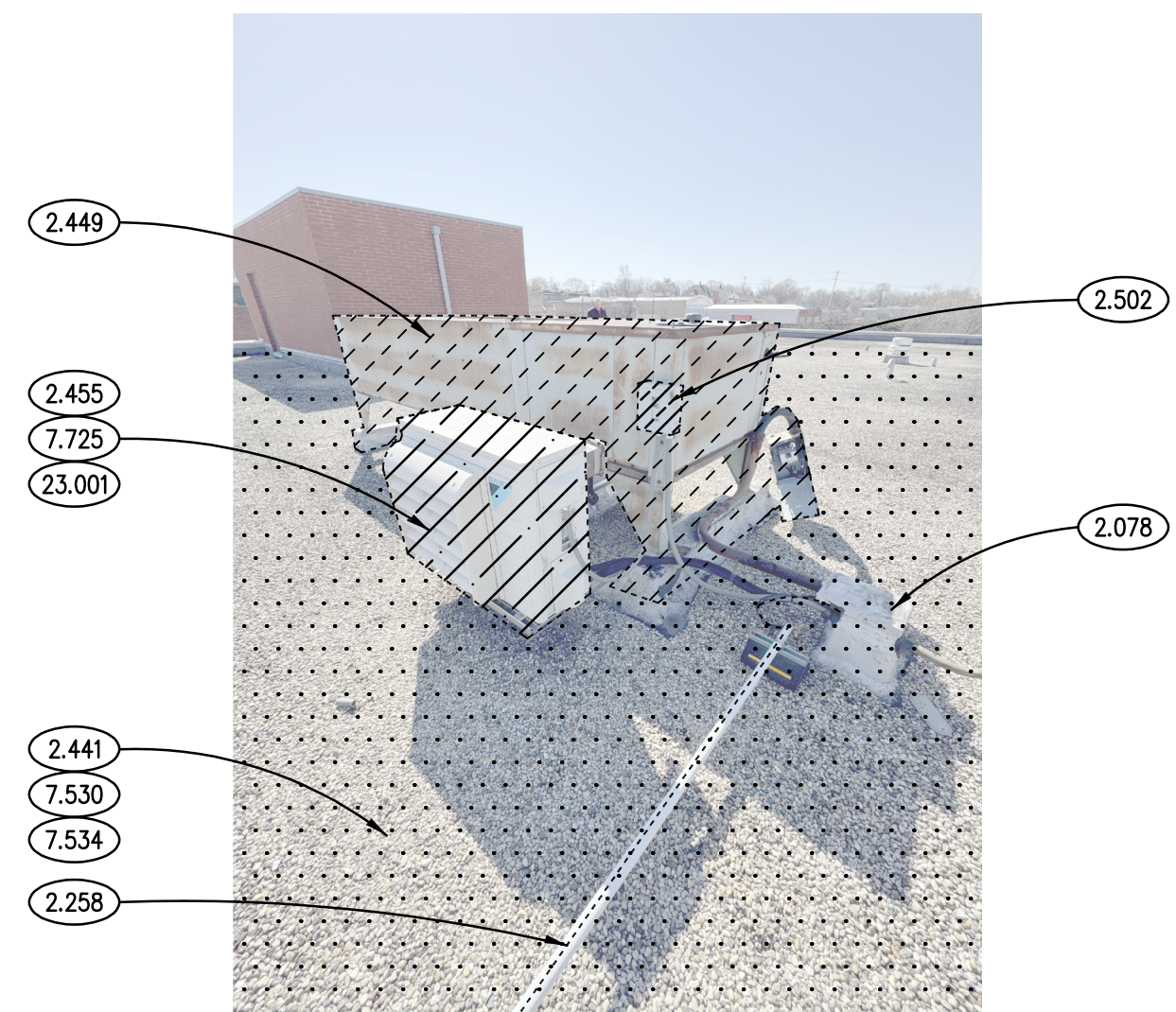


PHOTO DETAIL 3
 N.T.S.

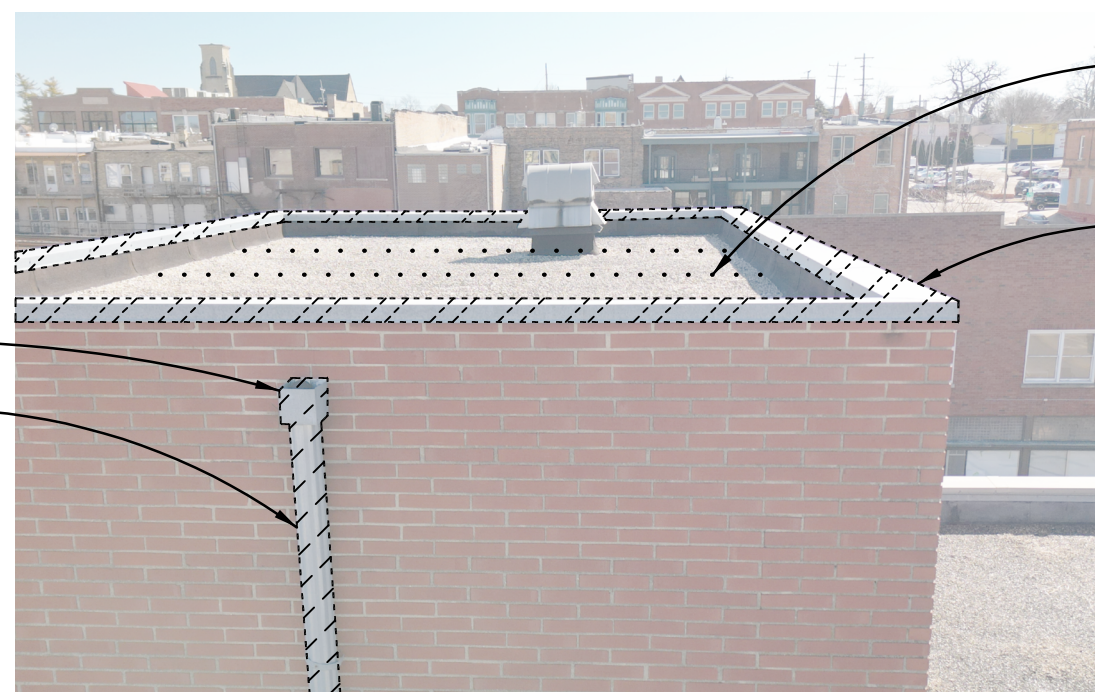


PHOTO DETAIL 8
 N.T.S.

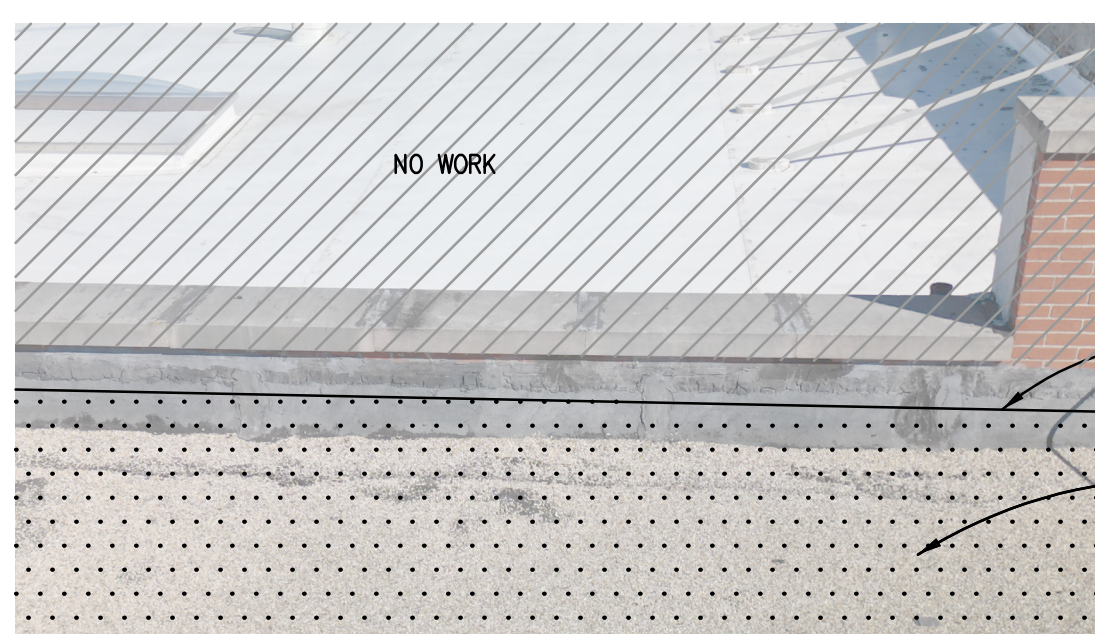


PHOTO DETAIL 9
 N.T.S.

