

ROOM FINISH SCHEDULE

ROOM NUMBER	ROOM NAME	FLOOR	BASE	WALLS	CLING	CEILING	REMARKS
101	MERCHANDISE		VINYL COMP. TILE (RF)	PAINTED (PT) ON 5/8" GYPSUM BD.	5/8" GYP. BD. PAINTED	10'-0"	
102	SALES		EXPOSED CONC./SEALANT (CONC)	PAINTED (PT) ON 5/8" GYPSUM BD.	5/8" GYP. BD. PAINTED	10'-0"	
103	FAST FD. PREP.		6" RUBBER (RB)	PAINTED (PT) ON 5/8" GYPSUM BD.	5/8" GYP. BD. PAINTED	10'-0"	
104	COFFEE ISLAND		NONE	PAINTED (PT) ON 5/8" GYPSUM BD.	5/8" GYP. BD. PAINTED	10'-0"	
105	BEVERAGE BAR		6" RUBBER (RB)	PAINTED (PT) ON 5/8" GYPSUM BD.	5/8" GYP. BD. PAINTED	10'-0"	
106	BACKROOM		NONE	PAINTED (PT) ON 5/8" GYPSUM BD.	5/8" GYP. BD. PAINTED	10'-0"	
107	WOMEN'S TOILET		6" RUBBER (RB)	PAINTED (PT) ON 5/8" GYPSUM BD.	5/8" GYP. BD. PAINTED	8'-0"	CEILING FRAMING: 6" 18 GA. STUDS @ 16" O.C. 3" BRG. E.E.
108	MEN'S TOILET		6" RUBBER (RB)	PAINTED (PT) ON 5/8" GYPSUM BD.	5/8" GYP. BD. PAINTED	8'-0"	CEILING FRAMING: 6" 18 GA. STUDS @ 16" O.C. 3" BRG. E.E.
109	COB. TOILET ROOM		6" RUBBER (RB)	PAINTED (PT) ON 5/8" GYPSUM BD.	5/8" GYP. BD. PAINTED	10'-0"	SDI-GLOSS PAINT FINISH THROUGHOUT
110	ELECTRICAL		6" RUBBER (RB)	PAINTED (PT) ON 5/8" GYPSUM BD.	5/8" GYP. BD. PAINTED	10'-0"	PLYWOOD BACKING BEHIND DRYWALL @ ELEC. PANELS FIRE-RATED
111	OFFICE		6" RUBBER (RB)	PAINTED (PT) ON 5/8" GYPSUM BD.	5/8" GYP. BD. PAINTED	8'-0"	
112	10 DR VAULT		6" RUBBER (RB)	PAINTED (PT) ON 5/8" GYPSUM BD.	5/8" GYP. BD. PAINTED	8'-0"	

DOOR SCHEDULE

DOOR NUMBER	DOOR TYPE	DOOR OPENING SIZE	DOOR THICKNESS	MATERIALS	DETAILS	GENERAL NOTES
1	1	6'-0" X 7'-0"	1 3/4"	ALUMINUM & GLASS	2-A11 7-A11 14-A11	KAWNEER, 7-11 PACKAGE
2	2	3'-0" X 7'-0"	1 3/4"	HOLLOW METAL	1-A10 2-A10 3-A10	PANIC HARDWARE, AUDIBLE ALARM
3	3	NOT USED				
4	4	3'-0" X 7'-0"	1 3/4"	ALUMINUM METAL	5-A10 5-A10 6-A10	ONE WAY MIRROR
5	5	3'-0" X 7'-0"	1 3/4"	ALUMINUM METAL	5-A10 5-A10 6-A10	
6	6	3'-0" X 7'-0"	1 3/4"	ALUMINUM METAL	5-A10 5-A10 6-A10	
7	7	PR 3'-0" X 7'-0"	1 3/4"	ALUMINUM METAL	1-A10 2-A10 3-A10	DOUBLE DOORS
8	8	3'-0" X 7'-0"	1 3/4"	ALUMINUM METAL	1-A10 2-A10 3-A10	

MATERIALS SCHEDULE

FLOOR	WALLS
1. RF: VINYL COMPOSITION TILE ARMSTRONG IMPERIAL EXCELON #51858 "SANDRIFT WHITE"	1. PT: PAINT--INTERIOR--SEE PAINT SCHEDULE, SHT. SP5. PT: PAINT--EXTERIOR--SEE PAINT SCHEDULE, SHT. SP5.
2. CONC: EXPOSED CONCRETE - SEALED, 2 COATS SENLEY PRIM-A-PELL	2. FRP: PRE-FINISHED WALL PANEL MARLITE P-140 PEARLE FINISH, IVORY
BASE	3. SDP: RED STRIPE DECOR TAPE COLOR: RED STRIPE WITH CHROME 9" HEIGHT. MFR. BY KUX
1. RB: RUBBER BASE V.P.I. - 6" WITH 3/8" RADIUS COVE, No. 314 TAUPE	4. PLWD: 5/8" PLYWOOD, PAINTED
STOREFRONT	SLAT WALL
1. KAWNEER SEE SPECS. SP4	1. MARLITE - MARLITE GENERAL CONTRACTOR TO INSTALL SLAT WALL WITH THE FOLLOWING: ITEM #1 - 4"x8" DISPLAY WALL PANELS #D-6140 COLOR: IVORY ITEM #2 - MODEL #9101 MILL INSERT ALUMINUM CHANNELS ITEM #3 - 10" STRIP EDGE MOLDING #W-770 (PAINT READY TO MATCH IVORY DISPLAY WALL)
CEILING	PAINT
1. ACT: ACOUSTICAL TILE ARMSTRONG SUSSTA 2907 NON PERFORATED STD. FIBERGLASS CLG. PANELS WHITE VINYL FACED. SUSPENSION SYSTEM - PRELUDE XL	1. REFER TO SPECIFICATION SHEET SP5. (BENJAMIN-MOORE PAINT)
2. VGB: USG GYPSUM BOARD LAY-IN PANELS WITH WHITE VINYL STIPPLE PATTERN NO. 3270	

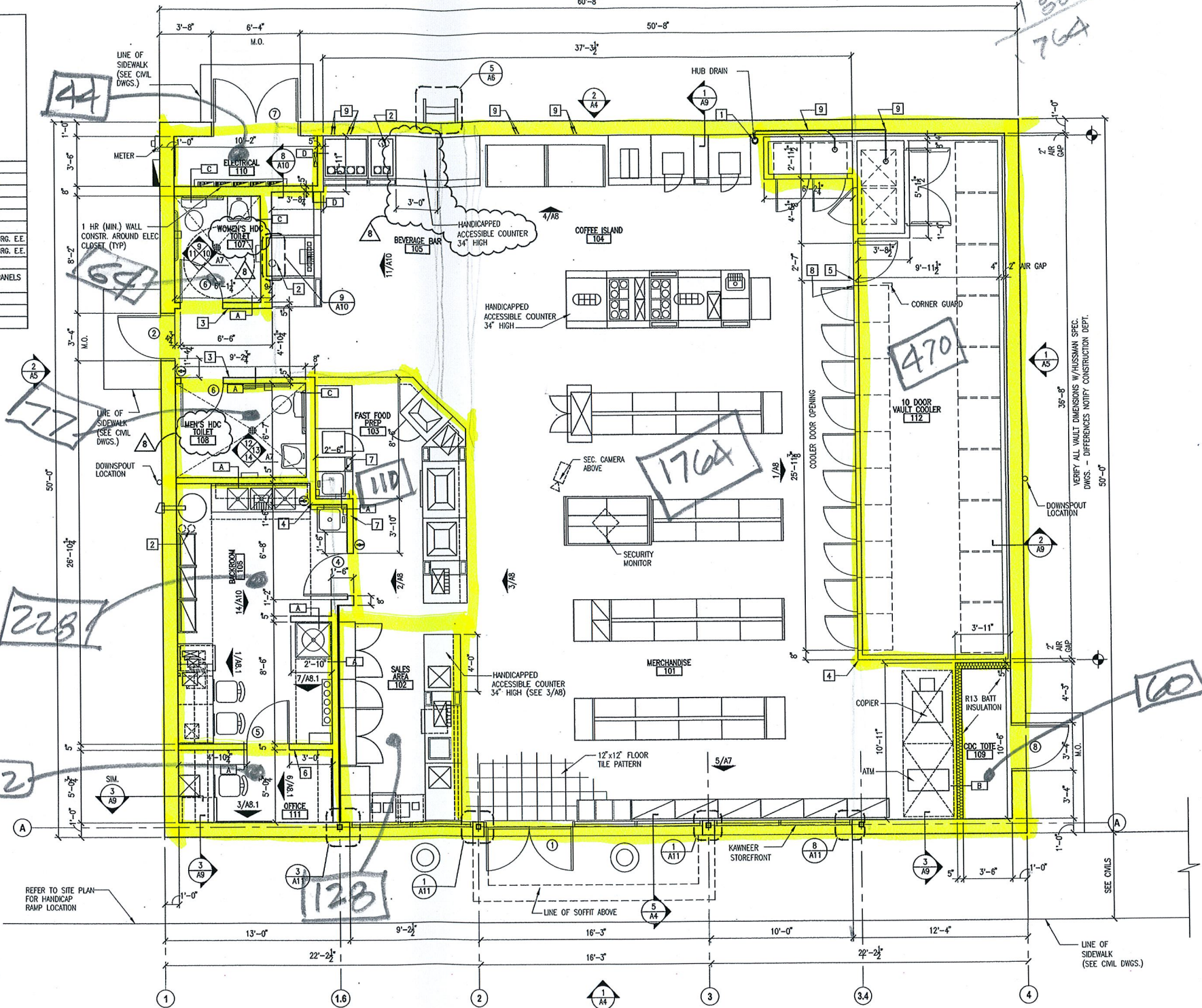
PAINTING SCHEDULE

APPLICATION	COLOR	FINISH	VEHICLE
EXTERIOR DOORS, FRAMES, CORNER GUARDS, AND LIGHT POLES	BRONZETONE NO. 16360 NO. 16362	SEMI-GLOSS	ALKYD
INTERIOR DOORS AND FRAMES	BEIGE NO. 226	SEMI-GLOSS	LATEX ENAMEL
INTERIOR GYPSUM BOARD SURFACES	BEIGE NO. 226	SEMI-GLOSS	LATEX ENAMEL
INTERIOR MILLWORK	BEIGE NO. 133-2A; GY-2X14, BK6, OE-6, GY-16, WH-4X	GLOSS	ALKYD ENAMEL

EXTERIOR SOFFIT SPEC. 06200:

ALUMINUM SOFFIT PANELS: FABRAL/ALCAN ALUMINUM CORP.
POSS-LOCK, .032" ALUMINUM ALLOY 3105-H14 SOLID SOFFIT
PANELS. COLOR: WHITE, NON PERFORATED. USE VINYL SOFFIT
AS AN ALTERNATE MATERIAL IN HIGH HUMIDITY AREAS.

2241 S EOLA RD



GENERAL NOTES:

- FRAMER SHALL ALLOW FOR DRYWALL, CORNER BEADS, AND FRP PANELS FOR PROPER FINISHED DIMENSIONS REQUIRED TO INSTALL EQUIPMENT.
- REFER TO SHEET E01 FOR THE SECURITY SYSTEM AND RETAIL AUTOMATION COMPUTER STATION LOCATION.
- NO EXPOSED CONDUIT/PIPE/ETC. ON INSIDE OR OUTSIDE OF STORE EXCEPT IN ELECTRICAL ROOM 110.
- TOILETS, URINALS, HAND SINKS, 3-COMP. SINKS, MOP BASIN, PREP SINKS, AND PERMANENT COUNTERS/CABINETS MUST BE SEALED TO FLOORS/WALLS WITH A SILICONE CAULK SEAL.
- ALL FLOORING SHALL BE NON-SLIP AS PER THE ILLINOIS ACCESSIBILITY CODE.

1 FLOOR PLAN
1/4" = 1'-0"

KEY NOTES:

- HUB DRAIN (H.D.) FOR DRAINS OF ROOF TOP UNITS, VAULT COOLER, ETC.
- PVC CHASES UNDER FLOOR FOR SYRUP LINES.
- HANDICAP IDENTIFICATION SIGN LOCATION MOUNTED AT 60\"/>

- PROVIDE FULL HT. 90\"/>

- PRECHARGED LINES PROVIDED & INSTALLED BY HUSSMAN IN WALL FOR REFRIGERATION ROUTED TO MCGU UNIT TO ROOF FOR SLURPEE. POST MIX AND OPEN AIR CASES, VAULT COOLER, VAULT FREEZER, VAULT ICE STORAGE. REFER TO SHEET P1.2 FOR PIPE ELEVATIONS.

NOTE: SEE SHEET AS FOR WALL TYPES



EXP. DATE: 11/30/04

ARCHITECTURE/ENGINEERING DEVELOPMENT
7-ELEVEN INC. EAST
211 CHASELLEN AVENUE
DALLAS, TX 75204
214-828-9580

KOSTUS & ASSOCIATES ARCHITECTS, LTD.
2775 Algonquin Rd.
Rolling Meadows, IL 60008
tel. (847) 506-9395 e-mail: rdk@kcostus.com
fax: (847) 506-9320 web site: www.kcostus.com

7-ELEVEN INCORPORATED
EOLA & HAFENLIGHTER
AURORA, ILLINOIS
6049 C-STORE PROTOTYPE

REVISIONS:
ADDENDUM 7
FOR PERMIT
ADDENDUM 8
ADDENDUM 9

DATE: 05-19-02
10-09-02
01-21-03

PROJECT NO: 21140

APPROVED:

DATE ISSUED: 01-21-03

TITLE
FLOOR PLAN SCHEDULES
MATERIAL NOTES
SCALE: AS NOTED

SHEET
A2
3
OF 17 SHEETS