

# **Attachment**

# **C**

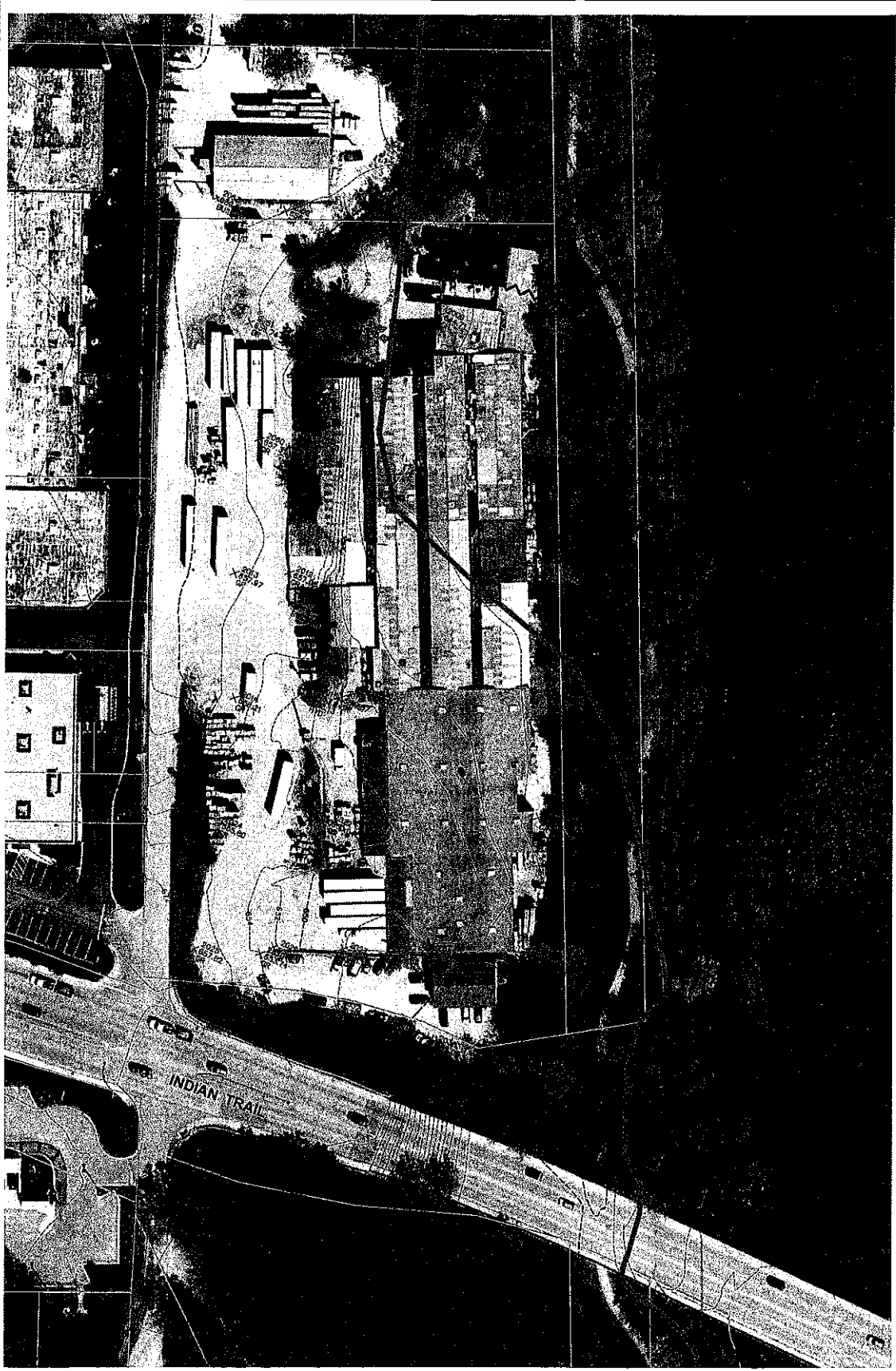

**Engineering Enterprises, Inc.**  
 CONSULTING ENGINEERS  
 524 West Lake Street, Suite 400  
 Schaumburg, Illinois 60194  
 815.466.6700 / www.eetinc.com


NO.	DATE	REVISIONS

118 WEST INDIAN TRAIL  
 CITY OF AURORA, ILLINOIS

FLOODPLAIN BOUNDARY  
 DELINEATION

DATE: DECEMBER 5, 2013  
 PROJECT NO: AU1310-SITE  
 FILE: AU1310-SITE  
 SHEET 1 OF 1




  
 SCALE: 1" = 40'

PROPERTY / R.O.W.  
 (FROM KC GIS DATA)

2 FT CONTOUR TOPOGRAPHY  
 (FROM KC GIS DATA)

FIELD SURVEY SHOTS  
 X 642.5

EXISTING PLANIMETRIC  
 FLOODPLAIN BOUNDARY / FLOODPLAIN  
 (FROM KC GIS DATA)

ESTIMATED FLOODPLAIN  
 BOUNDARY BASED 2 FT  
 CONTOURS (INTERPOLATED)  
 (FROM DFRM)

BASE FLOOD ELEVATION  
 (FROM DFRM)