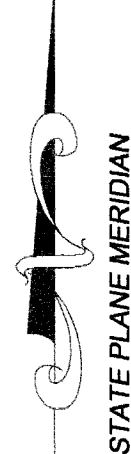


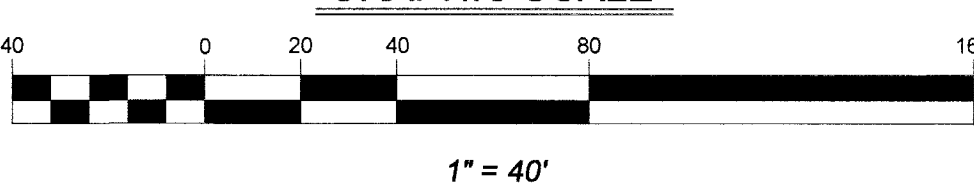


**ALTA/NSPS LAND TITLE SURVEY  
OF  
NEW SONG SITE  
AURORA, ILLINOIS**

PART OF THE WEST HALF OF FRACTIONAL SECTION 5, TOWNSHIP 37 NORTH,  
RANGE 9 EAST OF THE THIRD PRINCIPAL MERIDIAN, WILL COUNTY, ILLINOIS



**GRAPHIC SCALE**



**BASIS OF BEARINGS**

THE BASIS OF BEARINGS IS THE STATE PLANE  
COORDINATE SYSTEM (SPCS) NAD 83 (2011) ZONE  
1201 (ILLINOIS EAST) WITH PROJECT ORIGIN AT  
LATITUDE: 41-42-55.11867 N  
LONGITUDE: 88-14-38.34442 W  
ELLIPSOIDAL HEIGHT: 585.409 SFT  
GROUND SCALE FACTOR: 1.000027327  
ALL MEASUREMENTS ARE ON THE GROUND.

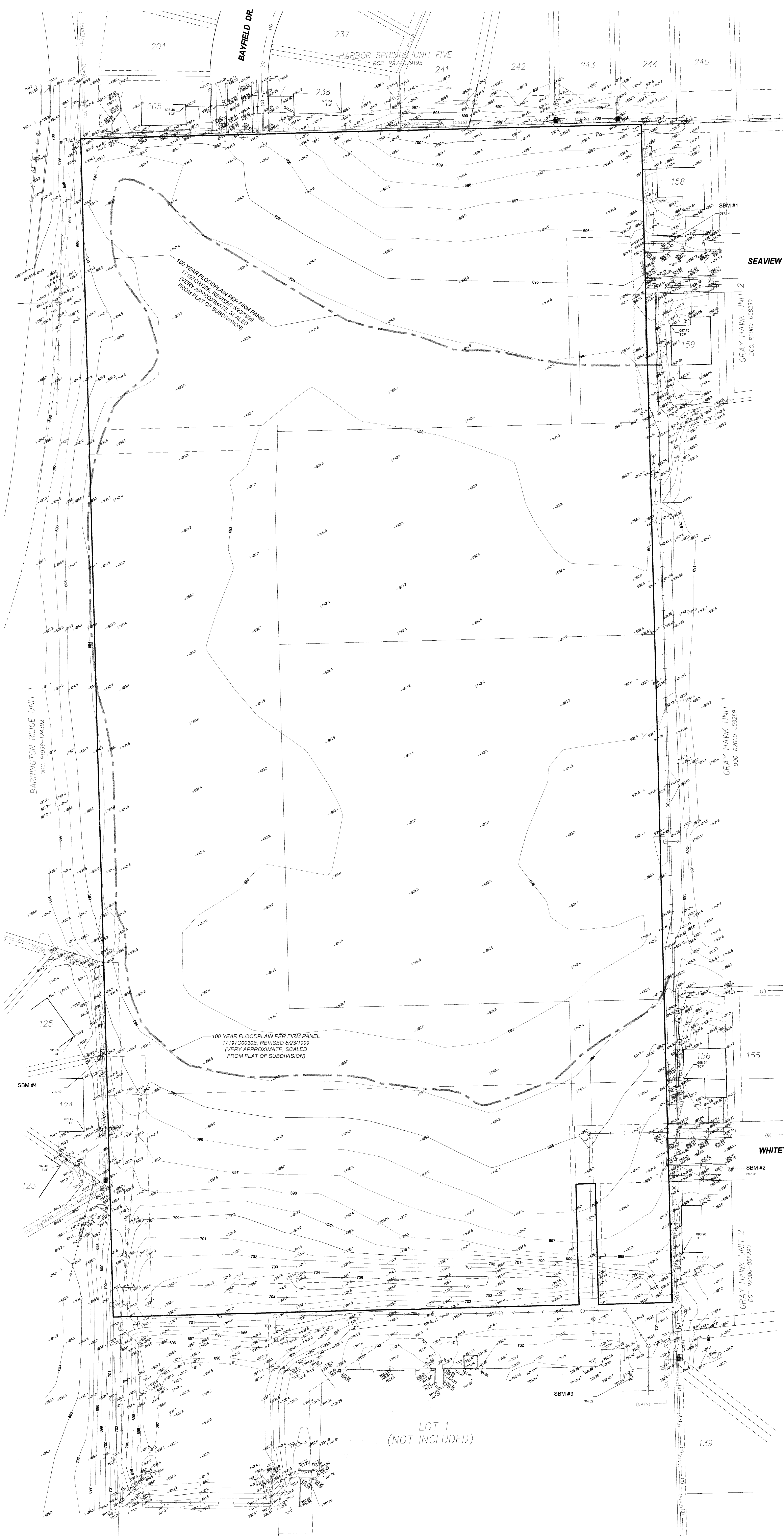
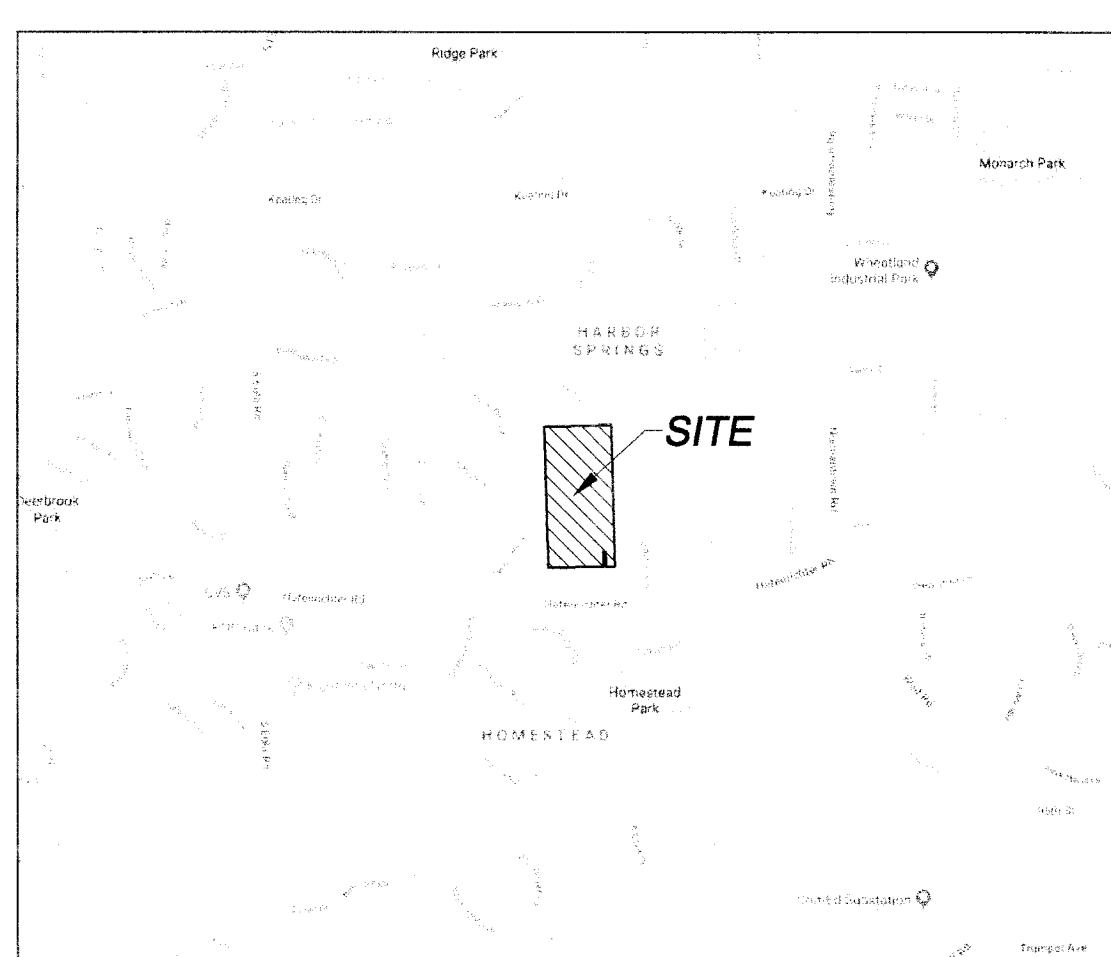
**LEGEND**

- |                               |                            |                          |
|-------------------------------|----------------------------|--------------------------|
| ● CABLE TV FEEDSTOCK          | ○ PAINTED GAS LINE         | ○ HEADWALL               |
| ○ TRAFFIC LIGHT POLE          | ○ GAS VALVE                | ○ CURB INLET             |
| ○ TRAFFIC CONTROL VAULT       | ○ GAS VALVE VAULT          | ○ STORM INLET            |
| ○ TRAFFIC LIGHT               | ○ GAS METER                | ○ STORM MANHOLE          |
| ○ TELEPHONE FEEDSTOCK         | ○ PIPELINE MARKER          | ○ FLARED END SECTION     |
| ○ TELEPHONE MANHOLE           | ○ MONTGOMERY WELLS         | ○ CLEANOUT               |
| ○ POLE INDICATOR VALVE        | ○ HOSE BIB                 | ○ SANITARY MANHOLE       |
| ○ FIBER OPTIC CABLE LINE      | ○ MELL HEAD                | ○ 4" WATER VALVE         |
| ○ ANCHOR                      | ○ FLAGPOLE                 | ○ HYDRANT                |
| ○ TELEPHONE POLE              | ○ SIGN                     | ○ WATER VALVE VAULT      |
| ○ LIGHT STANDARD              | ○ PUBLIC PAY TELEPHONE     | ○ PAINTED WATER LINE     |
| ○ ELECTRIC METER              | ○ PARKING METER            | ○ SPRINKLER HEAD         |
| ○ ELECTRIC TRANSFORMER PAD    | ○ METLAND MARKER           | ○ FOUND IRON IN CONCRETE |
| ○ ELECTRIC METER              | ○ BASKETBALL HOOP          | ○ FOUND IRON NAIL        |
| ○ MANHOLE                     | ○ AIR CONDITIONER PAD/UNIT | ○ FOUND IRON ROD         |
| ○ ELECTRICAL JUNCTION BOX     | ○ DECIDUOUS TREE           | ○ FOUND RAILROAD SPIKE   |
| ○ ELECTRIC VAULT              | ○ NON-DECIDUOUS TREE       | ○ FOUND IRON PIPE        |
| ○ ELECTRIC SERVICE OUTLET BOX | ○ 35 TRUNK SIZE            | ○ FOUND IRON BRASS       |
| ○ PAINTED ELECTRIC LINE       | ○ BUSH                     | ○ FOUND IRON MONUMENT    |
| ○ TRANSFORMER PAD             | ○ SOIL BORING HOLE         | ○ SET PK NAIL            |
|                               | ○ NUMBER                   | ○ SET ROD/PIPE           |
|                               |                            | ○ SET MONUMENT           |
|                               |                            | ○ SET TREE/PIPE          |
|                               |                            | ○ SET CONCRETE POINT     |
|                               |                            | ○ SET CONCRETE MONUMENT  |

**ABBREVIATIONS**

- |     |                                   |     |                                |
|-----|-----------------------------------|-----|--------------------------------|
| --- | PROPERTY LINE                     | --- | EXISTING TOP OF CURB ELEVATION |
| --- | EXISTING RIGHT-OF-WAY LINE        | --- | EXISTING FLOW LINE ELEVATION   |
| --- | LOT LINE                          | --- | EXISTING SPOT ELEVATION        |
| --- | CHUTE                             | --- | EXISTING FLOOR                 |
| --- | EXISTING EASEMENT LINE            | --- | GARAGE FINISHED FLOOR          |
| --- | BUILDING SETBACK LINE             | --- | FOUNDATION FLOOR               |
| --- | SECTION LINE                      | --- | TOP OF FOUNDATION              |
| --- | DIVISIONAL SECTION LINE           | --- | REINFORCED CONCRETE PIPE       |
| --- | EXISTING FENCE LINE (WOOD)        | --- | VITRIFIED CLAY PIPE            |
| --- | EXISTING FENCE LINE (METAL)       | --- | FRP                            |
| --- | GUARDRAIL                         | --- | SPRINKLER                      |
| --- | RAILROAD TRACKS                   | --- | SPRINKLER                      |
| --- | UNDERGROUND CABLE TV              | --- | TOP OF CURB                    |
| --- | UNDERGROUND FIBER OPTIC CABLE/LAS | --- | TOP OF DRIVE                   |
| --- | UNDERGROUND ELECTRIC              | --- | EDGE OF PAVEMENT               |
| --- | UNDERGROUND ELECTROPLAS INFO      | --- | CONCRETE                       |
| --- | UNDERGROUND TELEPHONE             | --- | MANHOLE                        |
| --- | UNDERGROUND TELEPHONE/ATLAS INFO  | --- | CONCRETE WALK                  |
| --- | GAS MAIN                          | --- | TOP OF WALL                    |
| --- | GAS MANHOLE (ATLAS INFO)          | --- | TOP OF FOUNDATION              |
| --- | WATER MAIN (ATLAS INFO)           | --- | BACK OF WALK                   |
| --- | WATER SERVICE (ATLAS INFO)        | --- | FLARED END SECTION             |
| --- | SANITARY SEWER (ATLAS INFO)       | --- | DUCTILE IRON PIPE              |
| --- | SANITARY SEWER                    | --- | STONE MAN                      |
| --- | STONE BEAM                        | --- | W. WEST                        |
| --- | STONE BEARING INFO                | --- | E. EAST                        |
| --- | EDGE OF WATER                     | --- | N. NORTH                       |
| --- | DEPRESSED CURB                    | --- | UTILITY EASEMENT               |
| --- | EXISTING CONTOUR LINE             | --- | MANUAL UTILITY EASEMENT        |
| --- | FLOODPLAIN LINE                   | --- | DRainage EASEMENT              |
| --- | UNPAVED ROAD                      | --- | UTILITY EASEMENT               |
| --- | ASPHALT PAVING OR WATER (LABELED) | --- | POINT OF CURVATURE             |
| --- | CONCRETE                          | --- | POINT OF REVERSE CURVATURE     |
| --- | WETLANDS                          | --- | MEASURED DISTANCE              |
| --- | EXISTING BUILDING                 | --- | MEASURED DISTANCE              |
| --- | MARSHLAND                         | --- | MEASURED DISTANCE              |
| --- | DETECTABLE WARNING PAD            | --- | MEASURED DISTANCE              |

**VICINITY MAP**  
NOT TO SCALE



**BENCHMARK**

**SOURCE:**  
STATION DESIGNATION: 0169 (PID DK3236)  
ESTABLISHED BY: NSG  
DATE: MAY 2008  
ELEVATION: 702.41 (PUBLISHED), 702.30 (MEASURED AND HELD)  
DATUM: NAVD83  
DESCRIPTION: THE STATION IS 107.6 FT (32.8 M) EAST OF THE CENTERLINE OF STATE ROUTE 58, 31.2 FT (9.5 M) SOUTH OF THE CENTERLINE OF 59TH STREET, 36.1 FT (11.0 M) WEST OF A GAS POLE AND 23.1 FT (7.0 M) NORTHEAST OF AN ELECTRIC MANHOLE. THE MONUMENT IS A BRASS DISK ON THE NORTH SIDE OF A CONCRETE TRAFFIC SIGNAL BASE.

**SITE:**  
STATION DESIGNATION: SBM #1  
ESTABLISHED BY: V3  
DATE: 10-01-18  
ELEVATION: 697.14 (MEASURED)  
DATUM: NAVD83  
DESCRIPTION: NORTHWEST TAG BOLT ON FIRE HYDRANT ON NORTH SIDE OF SEAVIEW DRIVE.

STATION DESIGNATION: SBM #2  
ESTABLISHED BY: V3  
DATE: 10-01-18  
ELEVATION: 697.96 (MEASURED)  
DATUM: NAVD83  
DESCRIPTION: SOUTHWEST TAG BOLT ON FIRE HYDRANT ON SOUTH SIDE OF WHITETHORN DRIVE.

STATION DESIGNATION: SBM #3  
ESTABLISHED BY: V3  
DATE: 10-01-18  
ELEVATION: 704.02 (MEASURED)  
DATUM: NAVD83  
DESCRIPTION: SOUTHWEST TAG BOLT ON FIRE HYDRANT ON EAST SIDE OF DRIVE, NORTH OF NEW SONG COMMUNITY CHURCH.

STATION DESIGNATION: SBM #4  
ESTABLISHED BY: V3  
DATE: 10-01-18  
ELEVATION: 705.17 (MEASURED)  
DATUM: NAVD83  
DESCRIPTION: NORTHWEST TAG BOLT ON FIRE HYDRANT IN REAR YARDS BETWEEN LOTS 124 AND 125 IN BARRINGTON RIDGE UNIT 1.

THE ELEVATIONS ABOVE WERE KNOWN TO BE ACCURATE AT THE TIME THEY WERE ESTABLISHED. V3 DOES NOT CERTIFY TO THE ACCURACY THEREAFTER, NOR ASSUMES RESPONSIBILITY FOR THE MISUSE OR MISINTERPRETATION OF THE INFORMATION SHOWN HEREON.

IT IS ADVISED THAT ALL OF THE ABOVE ELEVATIONS BE CHECKED BETWEEN EACH OTHER AND VERIFY A MINIMUM OF 3 SURROUNDING UTILITY, RM ELEVATIONS AND ANY ADJACENT BUILDING FINISHED FLOOR OR TOP OF FOUNDATION ELEVATIONS SHOWN HEREON PRIOR TO USE OR COMMENCEMENT OF ANY CONSTRUCTION OR OTHER WORK.

PERSONS USING THIS INFORMATION ARE TO CONTACT V3 IMMEDIATELY WITH ANY DISCREPANCIES FOUND PRIOR TO THE START OF ANY WORK.

SEE SHEET 1 FOR BOUNDARY AND UTILITIES

NO.		DATE		DESCRIPTION	NO.		DATE		DESCRIPTION
1	11-26-2018			REVISED PER PULTE GROUP 11-21-2018 LETTER					