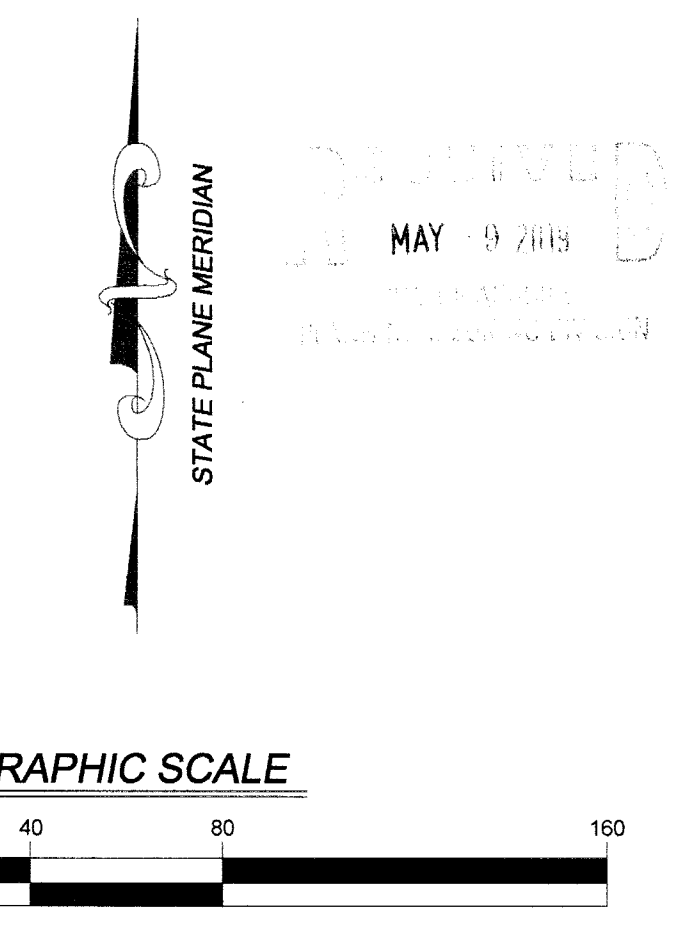


ALTA/NSPS LAND TITLE SURVEY OF NEW SONG SITE AURORA, ILLINOIS

LEGAL DESCRIPTION

PARCEL A LOTS 3 AND 4 OF THE FINAL PLAT OF NEW SONG HIGHLANDS, RECORDED APRIL 4, 2010 AS DOCUMENT R2010034688 AND BEING A SUBDIVISION OF PART OF THE WEST HALF OF FRACTIONAL SECTION 5, TOWNSHIP 37 NORTH, RANGE 9 EAST OF THE THIRD PRINCIPAL MERIDIAN, WILL COUNTY, ILLINOIS.

PARCEL B LOT 2 OF THE FINAL PLAT OF NEW SONG HIGHLANDS, RECORDED APRIL 4, 2010 AS DOCUMENT R2010034688 AND BEING A SUBDIVISION OF PART OF THE WEST HALF OF FRACTIONAL SECTION 5, TOWNSHIP 37 NORTH, RANGE 9 EAST OF THE THIRD PRINCIPAL MERIDIAN, WILL COUNTY, ILLINOIS.



BASIS OF BEARINGS

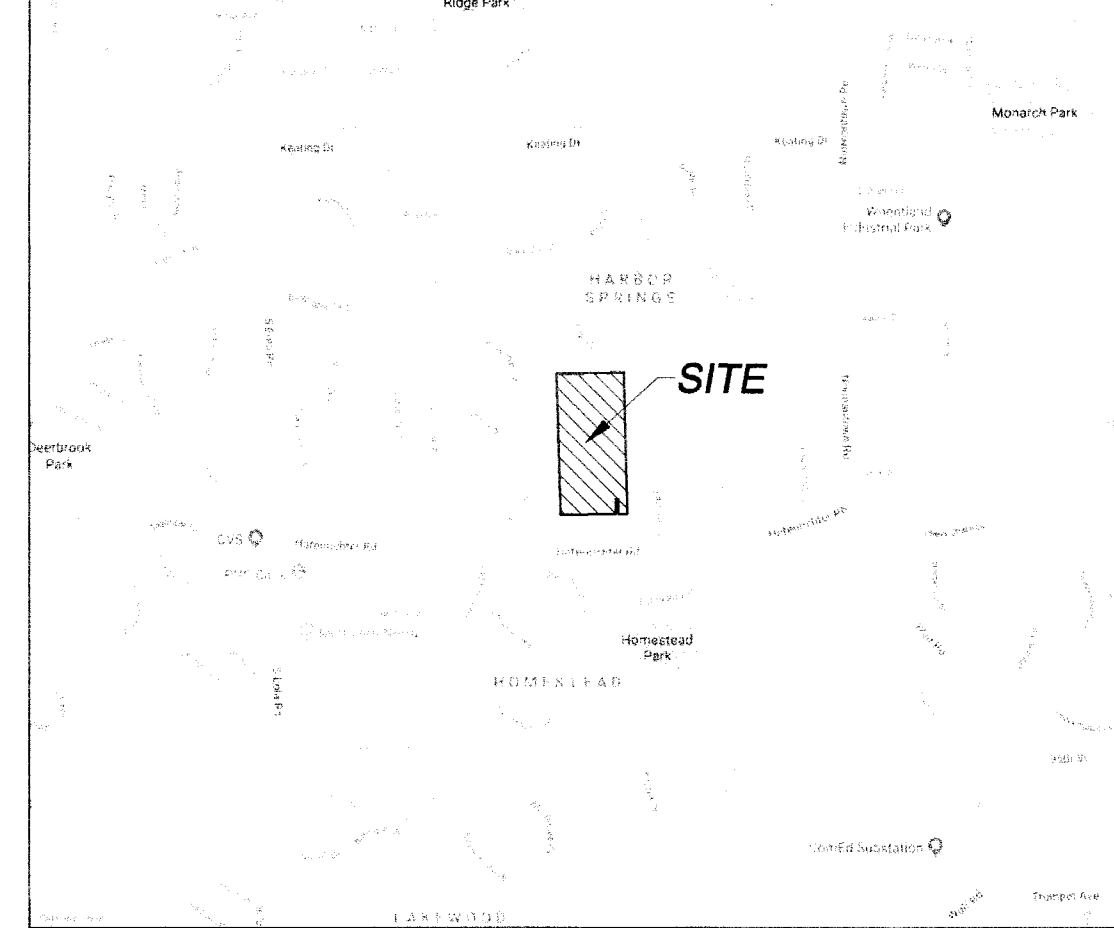
THE BASIS OF BEARINGS IS THE STATE PLANE COORDINATE SYSTEM (SPCS) ZONE 1201 ILLINOIS EAST WITH PROJECT ORIGIN AT LATITUDE 41-42-55.11887 N LONGITUDE 88-14-38.34442 W...

LEGEND

- Legend symbols for utility lines, easements, and other features including Cable TV, Traffic Light Pole, Telephone, and various utility lines.

ABBREVIATIONS

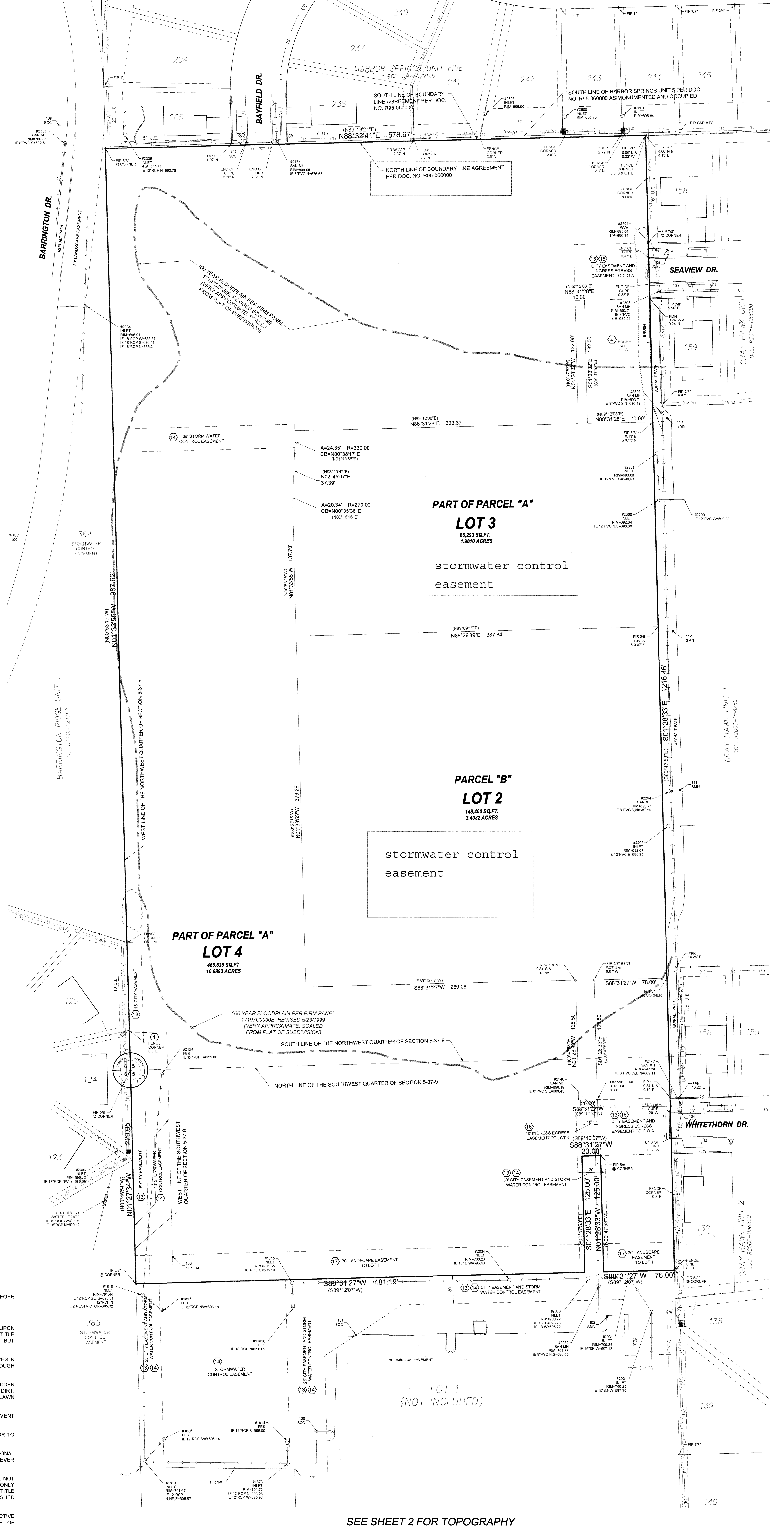
- Abbreviations for various features such as Property Line, Existing Right-of-Way Line, and various utility lines.



AREA table with columns for Parcel A, Parcel B, and Total, listing square feet and acreage.

FLOOD HAZARD NOTE

PART OF THIS PROPERTY IS IN AREAS DETERMINED TO BE IN SPECIAL FLOOD HAZARD AREAS INUNDATED BY 100-YEAR FLOOD, NO BASE ELEVATION DETERMINED (ZONE A), AND PART IS IN AREAS DETERMINED TO BE OUTSIDE THE 500 YEAR FLOODPLAIN...



UTILITY ATLAS NOTES

Table with columns for CONTACTS and RESPONSE, listing utility companies and their responses to requests.

NOTES FROM SCHEDULE B

Table with columns for EXCEPTIONS and PLOTTED HEREON, listing specific survey exceptions.

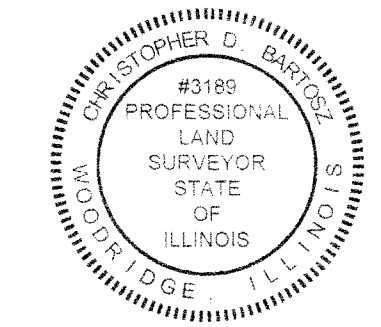
GENERAL NOTES

- General notes providing instructions and information for the survey, including comparisons of this plat with other surveys and instructions for construction.

SEE SHEET 2 FOR TOPOGRAPHY

SURVEYOR'S CERTIFICATE

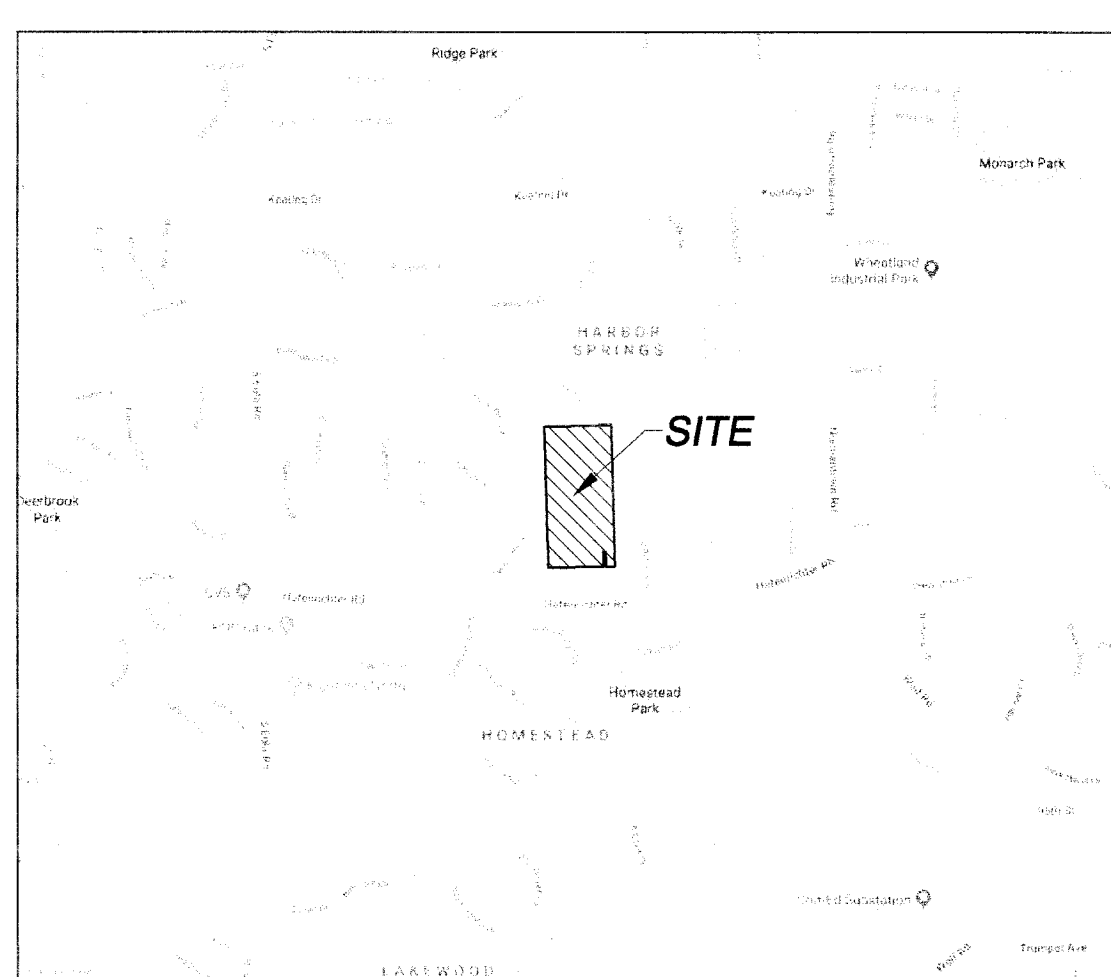
STATE OF ILLINOIS ) County of DuPage ) TO: PULTE HOMES, LLC, A MICHIGAN LIMITED LIABILITY COMPANY, OAKHILL SALES, LLC, AN ILLINOIS LIMITED LIABILITY COMPANY, CHICAGO TITLE INSURANCE COMPANY, POB TITLE, INC.



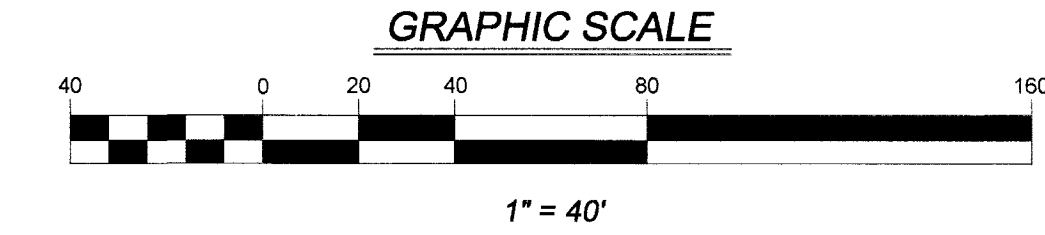


ALTA/NSPS LAND TITLE SURVEY  
OF  
NEW SONG SITE  
AURORA, ILLINOIS

PART OF THE WEST HALF OF FRACTIONAL SECTION 5, TOWNSHIP 37 NORTH,  
RANGE 9 EAST OF THE THIRD PRINCIPAL MERIDIAN, WILL COUNTY, ILLINOIS.

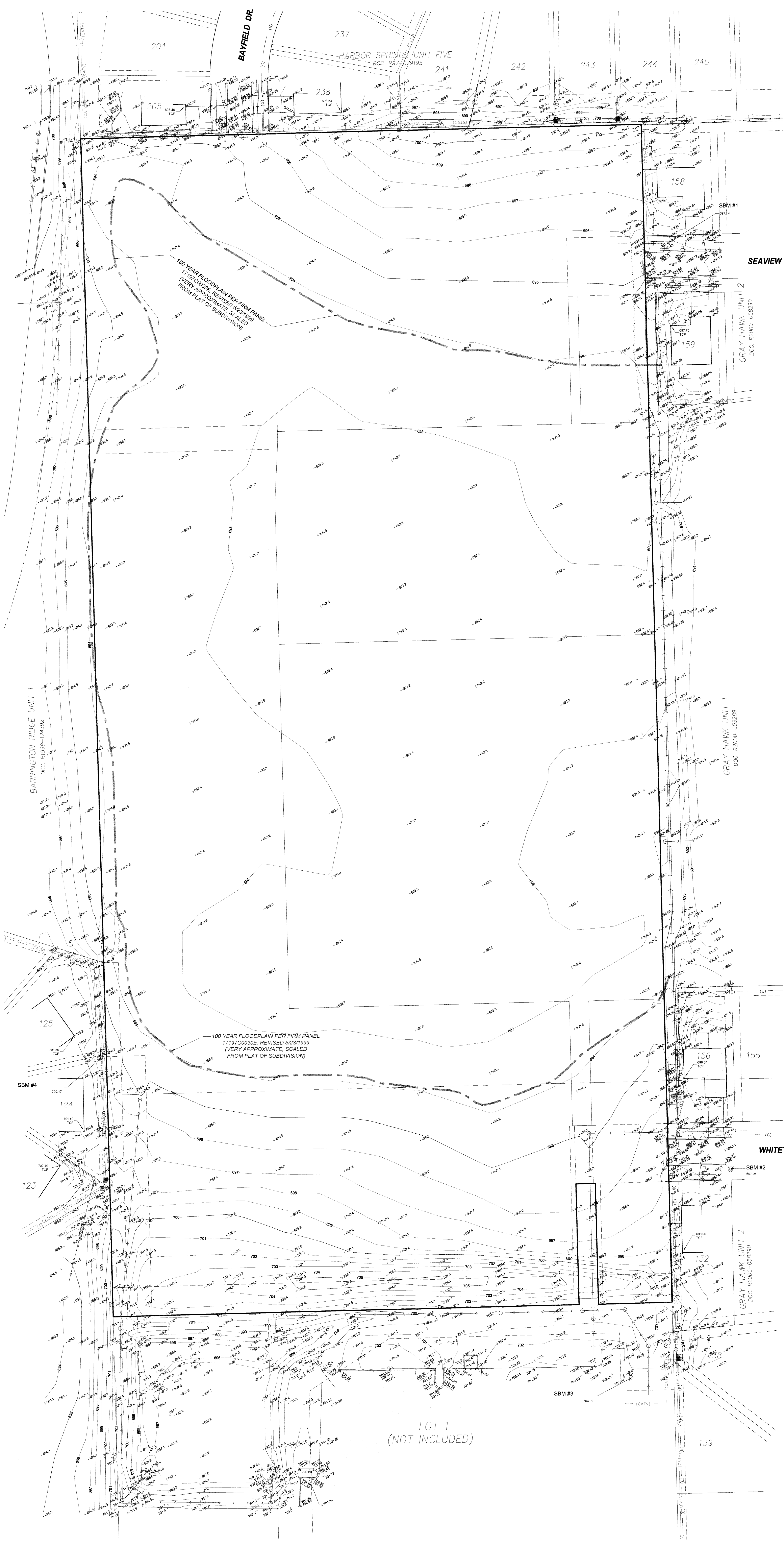


VICINITY MAP  
NOT TO SCALE



GRAPHIC SCALE  
1" = 40'

**BASIS OF BEARINGS**  
THE BASIS OF BEARINGS IS THE STATE PLANE COORDINATE SYSTEM (SPCS) NAD 83 (2011) ZONE 1201 (ILLINOIS EAST) WITH PROJECT ORIGIN AT LATITUDE 41-42-55.11887 N LONGITUDE 88-14-38.34442 W ELLIPSOIDAL HEIGHT 585.409 SFT GROUND SCALE FACTOR 1.00002327 ALL MEASUREMENTS ARE ON THE GROUND.



- LEGEND**
- CABLE TV FEEDER
  - TRAFFIC LIGHT POLE
  - TRAFFIC CONTROL VAULT
  - TRAFFIC LIGHT
  - TELEPHONE FEEDER
  - TELEPHONE MANHOLE
  - PAINTED TELEPHONE LINE
  - FIBER OPTIC CABLE LINE
  - ANCHOR
  - GUY WIRE
  - TELEPHONE POLE
  - POWER POLE
  - LIGHT STANDARD
  - ELECTRIC FEEDER
  - ELECTRIC TRANSFORMER PAD
  - ELECTRIC METER
  - MANHOLE
  - ELECTRICAL JUNCTION BOX
  - ELECTRIC VALVE
  - ELECTRIC SERVICE OUTLET BOX
  - PAINTED ELECTRIC LINE
  - TRANSFORMER PAD
  - PAINTED GAS LINE
  - GAS VALVE
  - GAS VALVE VAULT
  - GAS METER
  - PIPELINE MARKER
  - MONITORING WELL
  - POST INDICATOR VALVE
  - MELL HEAD
  - FLAGPOLE
  - MAILBOX
  - SIGN
  - PUBLIC PAY TELEPHONE
  - PARKING METER
  - MET LANDING MARKER
  - BASKETBALL HOOP
  - AIR CONDITIONER PAD/UNIT
  - DECIDUOUS TREE
  - TOP OF TRUNK TREE
  - NON-DECIDUOUS TREE
  - 35 TRUNK TREE
  - BUSH
  - SOIL BORING HOLE
  - NUMBER
  - HEADWALL
  - CURB INLET
  - STORM INLET
  - STORM MANHOLE
  - FLARED END SECTION
  - CLEANOUT
  - SANITARY MANHOLE
  - HOSE BIB
  - WATER VALVE
  - WATER VALVE VAULT
  - PAINTED WATER LINE
  - SPRINKLER HEAD
  - FLOOR METER
  - FOUND IRON IN CONCRETE
  - FOUND IRON MANHOLE
  - FOUND IRON ROD
  - FOUND IRON SPIKE
  - FOUND IRON BAR
  - FOUND BRASS MONUMENT
  - FOUND BRASS MARK
  - FOUND BRASS NOTCH
  - SET PK NAIL
  - SET IRON PIPE
  - SET MONUMENT
  - SET TREE POINT
  - SET CONCRETE MONUMENT

- ABBREVIATIONS**
- PROPERTY LINE
  - EXISTING RIGHT-OF-WAY LINE
  - LOT LINE
  - CENTERLINE
  - EXISTING EASEMENT LINE
  - PROPOSED EASEMENT LINE
  - BUILDING SETBACK LINE
  - SECTION LINE
  - DIVISIONAL SECTION LINE
  - EXISTING FENCE LINE (WOOD)
  - EXISTING FENCE LINE (WIRE)
  - GUARDRAIL
  - RAILROAD TRACKS
  - UNDERGROUND CABLE TV
  - UNDERGROUND CABLE (ATLAS INFO)
  - UNDERGROUND FIBER OPTIC CABLE(ATLAS)
  - UNDERGROUND ELECTRIC
  - UNDERGROUND ELECTROPLAS (INFO)
  - UNDERGROUND TELEPHONE
  - UNDERGROUND TELEPHONE(ATLAS INFO)
  - GAS MAIN
  - GAS MANHOLE (INFO)
  - WATER MAIN
  - WATER MAIN (ATLAS INFO)
  - WATER SERVICE (ATLAS INFO)
  - SANITARY SEWER
  - SANITARY SEWER(ATLAS INFO)
  - STORM SEWER
  - STORM SEWER(ATLAS INFO)
  - EDGE OF WHITE
  - CURB
  - DEPRESSION CURB
  - EXISTING CONTOUR LINE
  - FLOODPLAIN LINE
  - ASPHALT PAVING OR WATER (LABELED)
  - UNPAVED ROAD
  - CONCRETE
  - EXISTING BUILDING
  - MANSION
  - DETECTABLE WARNING PAD
  - EXISTING TOP OF CURB ELEVATION
  - EXISTING FLOW LINE ELEVATION
  - EXISTING SPOT ELEVATION
  - GARAGE FINISHED FLOOR
  - FINISHED FLOOR
  - TOP OF FOUNDATION
  - COMP. FOUNDATION
  - REINFORCED CONCRETE PIPE
  - VITRIFIED CLAY PIPE
  - BRICK
  - BRICK
  - TOP OF CURB
  - TOP OF FOUNDATION
  - EDGE OF PAVEMENT
  - FLOW LINE
  - CONCRETE
  - MANHOLE
  - CONCRETE WALK
  - TOP OF WALL
  - BOTTOM OF WALL
  - BACK OF WALK
  - FLARED END SECTION
  - DUCTILE IRON PIPE
  - STORMSEWER
  - SANITARY SEWER
  - NORTH
  - SOUTH
  - EAST
  - WEST
  - CHORD BEARING
  - ARC LENGTH
  - UTILITY EASEMENT
  - PUBLIC UTILITY EASEMENT
  - DRAINAGE EASEMENT
  - MUNICIPAL UTILITY EASEMENT
  - HORREX & EGRESS EASEMENT
  - POINT OF CURVATURE
  - POINT OF TANGENCY
  - POINT OF REVERSE CURVATURE
  - RECORD DATA
  - MEASUREMENT
  - POINT OF BEGINNING
  - SCHEDULE B EXCEPTION
  - SCHEDULE B EXCEPTION

**BENCHMARK**

**SOURCE**  
STATION DESIGNATION: 0189 (PIG DK3238)  
ESTABLISHED BY: NSG  
DATE: MAY 2008  
ELEVATION: 702.81 (PUBLISHED), 702.90 (MEASURED AND HELD)  
DATUM: NAVD83  
DESCRIPTION: THE STATION IS 107.6 FT (32.8 M) EAST OF THE CENTERLINE OF STATE ROUTE 58, 31.2 FT (9.5 M) SOUTH OF THE CENTERLINE OF 53RD STREET, 36.1 FT (11.0 M) WEST OF A GAS POST AND 23.1 FT (7.0 M) NORTHEAST OF AN ELECTRIC MANHOLE. THE MONUMENT IS A BRASS DISK ON THE NORTH SIDE OF A CONCRETE TRAFFIC SIGNAL BASE.

**SITE**  
STATION DESIGNATION: SBM #1  
ESTABLISHED BY: V3  
DATE: 09-18-18  
ELEVATION: 697.14 (MEASURED)  
DATUM: NAVD83  
DESCRIPTION: NORTHWEST TAG BOLT ON FIRE HYDRANT ON NORTH SIDE OF SEAVIEW DRIVE.

STATION DESIGNATION: SBM #2  
ESTABLISHED BY: V3  
DATE: 10-01-18  
ELEVATION: 697.96 (MEASURED)  
DATUM: NAVD83  
DESCRIPTION: SOUTHEAST TAG BOLT ON FIRE HYDRANT ON SOUTH SIDE OF WINTERTHORN DRIVE.

STATION DESIGNATION: SBM #3  
ESTABLISHED BY: V3  
DATE: 10-01-18  
ELEVATION: 704.02 (MEASURED)  
DATUM: NAVD83  
DESCRIPTION: SOUTHEAST TAG BOLT ON FIRE HYDRANT ON EAST SIDE OF DRIVE, NORTH OF NEW SONG COMMUNITY CHURCH.

STATION DESIGNATION: SBM #4  
ESTABLISHED BY: V3  
DATE: 10-01-18  
ELEVATION: 700.17 (MEASURED)  
DATUM: NAVD83  
DESCRIPTION: NORTH-EAST TAG BOLT ON FIRE HYDRANT IN REAR YARDS BETWEEN LOTS 124 AND 125 IN BARRINGTON RIDGE UNIT 1.

THE ELEVATIONS ABOVE WERE KNOWN TO BE ACCURATE AT THE TIME THEY WERE ESTABLISHED. V3 DOES NOT CERTIFY TO THE ACCURACY THEREAFTER, NOR ASSUMES RESPONSIBILITY FOR THE MISUSE OR MIS-INTERPRETATION OF THE INFORMATION SHOWN HEREON.

IT IS ADVISED THAT ALL OF THE ABOVE ELEVATIONS BE CHECKED BETWEEN EACH OTHER AND VERIFY A MINIMUM OF 3 SURROUNDING UTILITY RIM ELEVATIONS AND ANY ADJACENT BUILDING FINISHED FLOOR OR TOP OF FOUNDATION ELEVATIONS SHOWN HEREON PRIOR TO USE OR COMMENCEMENT OF ANY CONSTRUCTION OR OTHER WORK.

PERSONS USING THIS INFORMATION ARE TO CONTACT V3 IMMEDIATELY WITH ANY DISCREPANCIES FOUND PRIOR TO THE START OF ANY WORK.

SEE SHEET 1 FOR BOUNDARY AND UTILITIES